

Dual band Wireless Adapter Quick Start Guide

Model: UWA5



Learn More

Visit <https://www.EZCast.com> for more information.

Visit <https://www.YouTube.com/EZCast> for video tutorials.

Software Installation

Visit <https://www.EZCast.com> to download driver platform-specific and User Manual.

Hardwar Installation

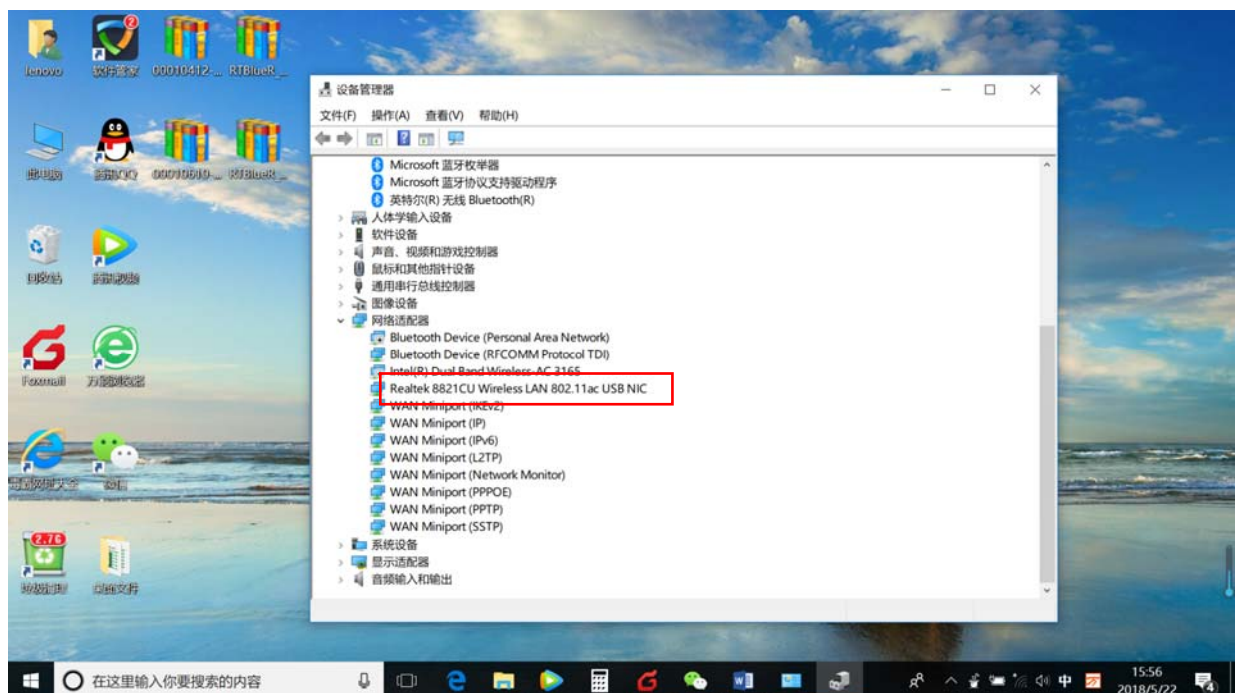
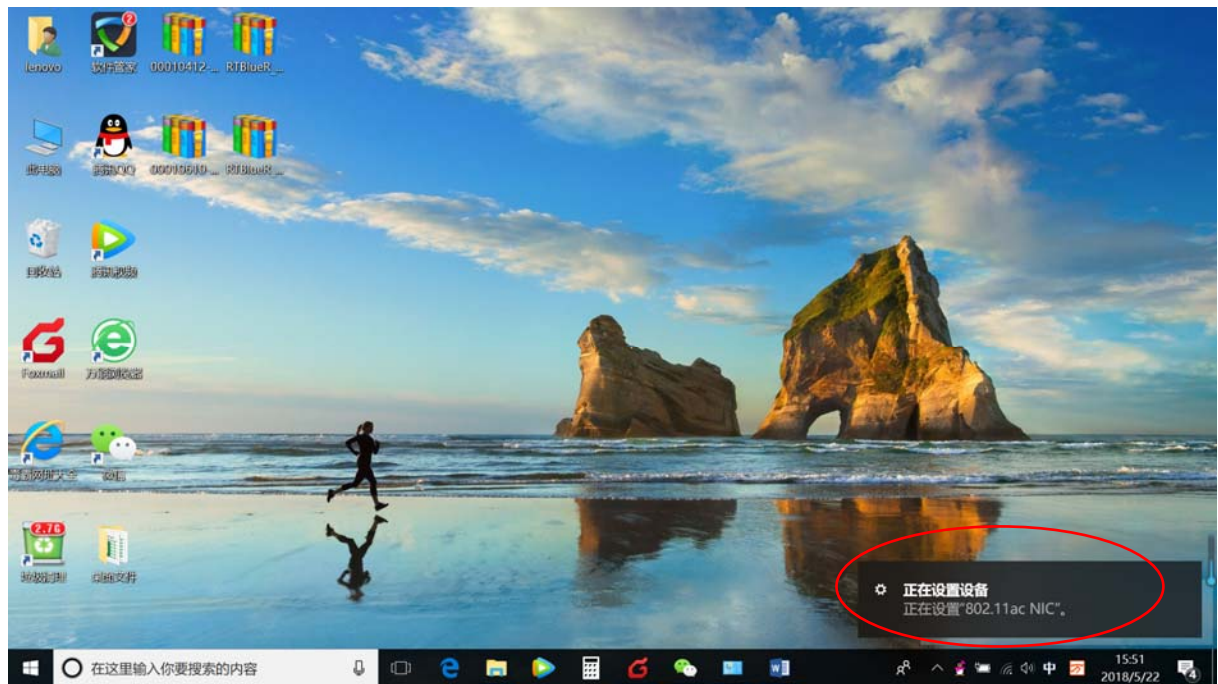
Plug the UWA5 into an USB input port on your computer or laptop.




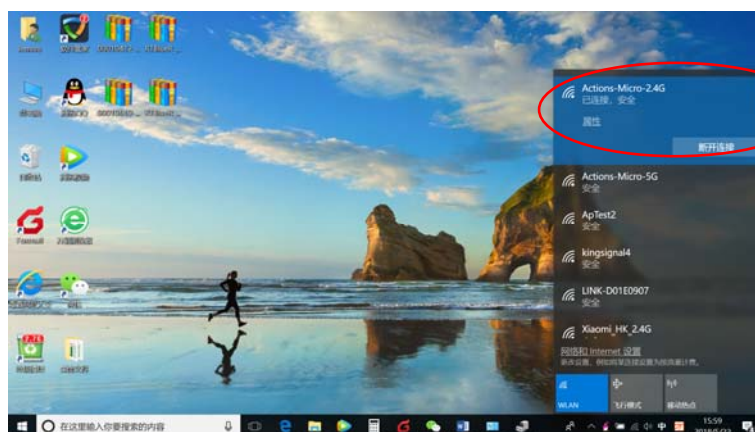
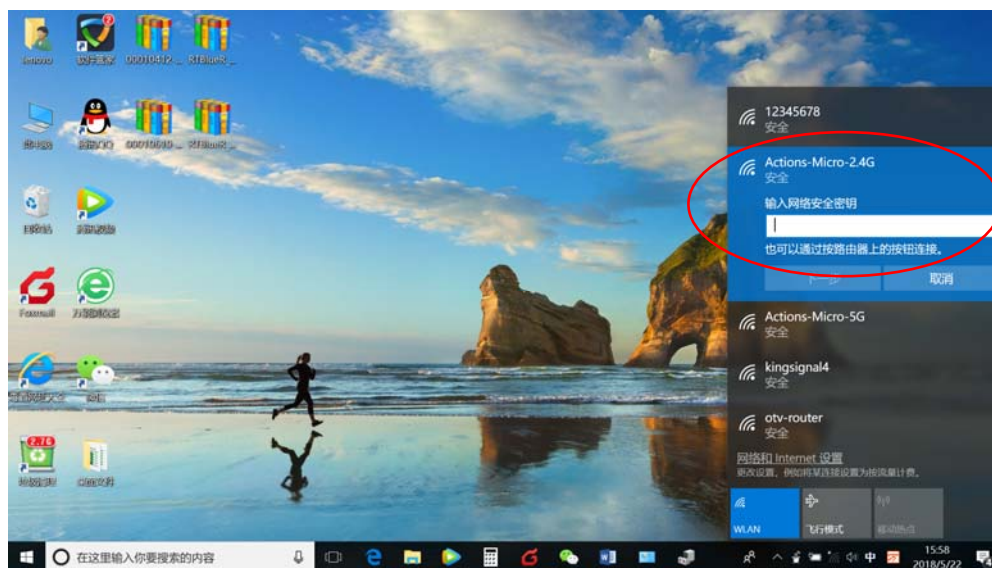
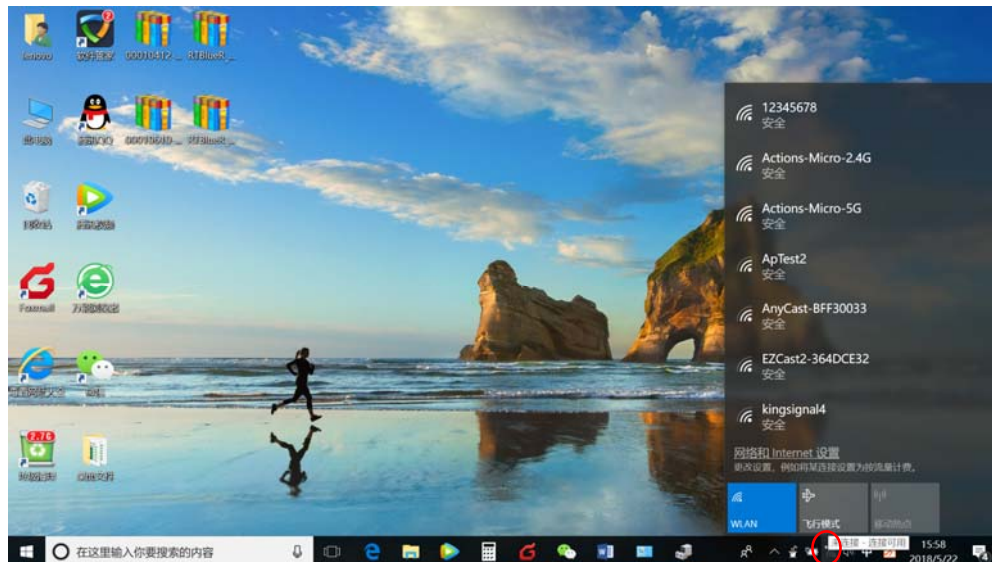
WiFi driver auto-installation

Take Windows10 as an example as below

1.open your computer or laptop, plug the UWA5 into the USB port, then the WiFi driver will be auto-installation.



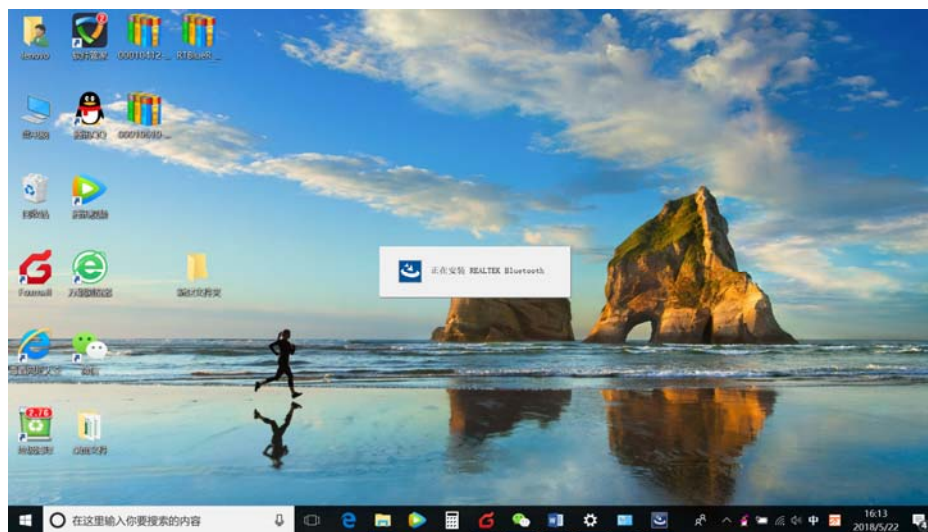
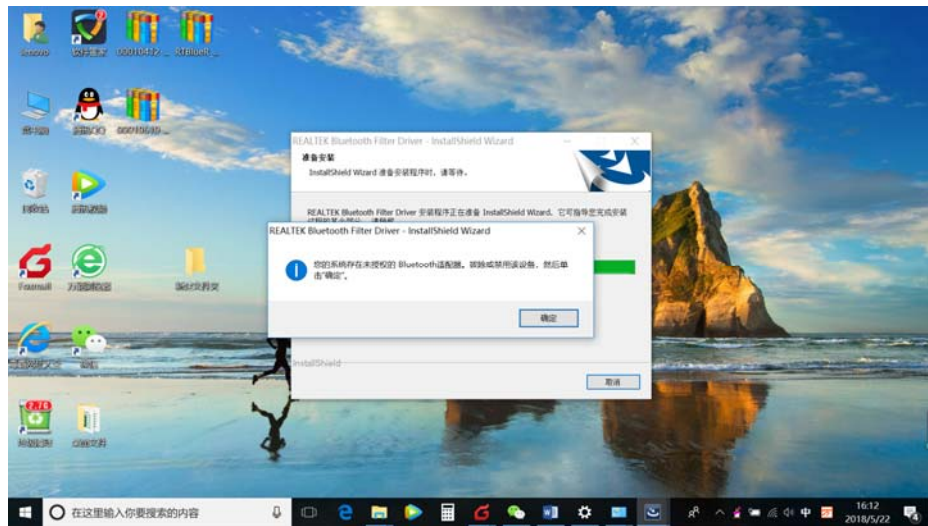
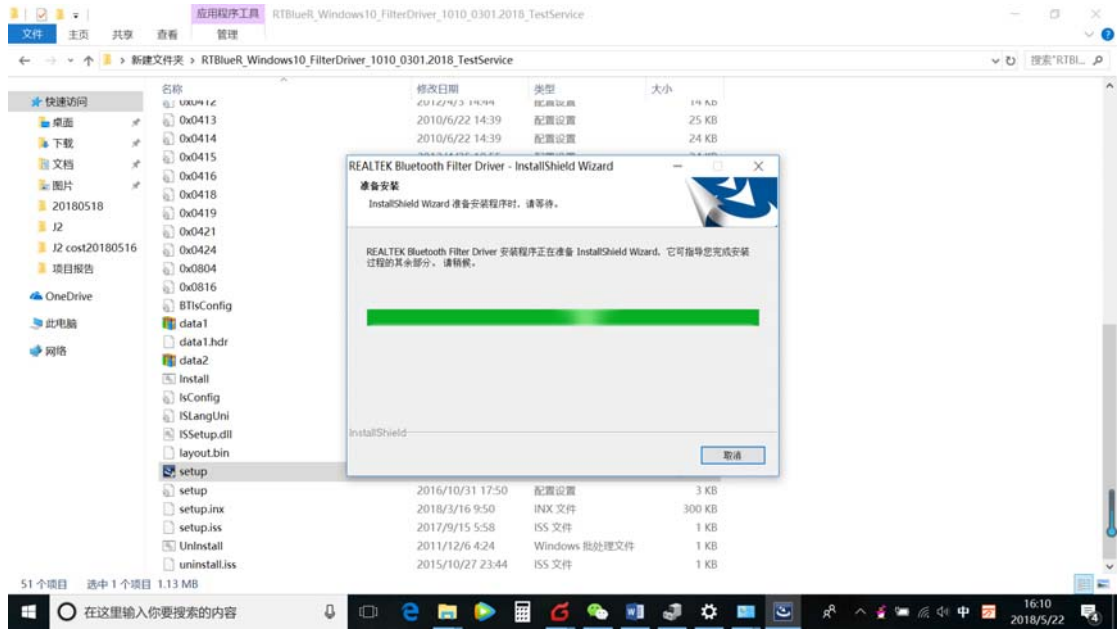
2. Please click wireless connection icon  and then choose the available WiFi signal, connect UWA5 to the router.

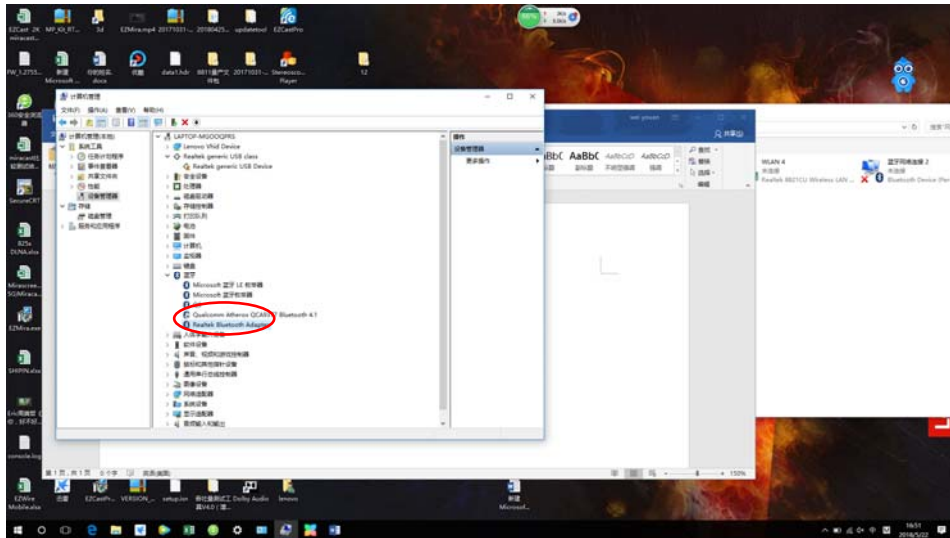


Bluetooth driver Installation

1. Visit <https://www.EZCast.com> to download the Bluetooth driver
2. Open the folder, click the Setup icon to complete the installation.







Warning:

This device complies with Part 15 of the FCC Rules. Operation is subject to the following two conditions: (1) this device may not cause harmful interference, and (2) this device must accept any interference received, including interference that may cause undesired operation.

changes or modifications not expressly approved by the party responsible for compliance could void the user's authority to operate the equipment.

NOTE: This equipment has been tested and found to comply with the limits for a Class B digital device, pursuant to Part 15 of the FCC Rules. These limits are designed to provide reasonable protection against harmful interference in a residential installation. This equipment generates, uses and can radiate radio frequency energy and, if not installed and used in accordance with the instructions, may cause harmful interference to radio communications. However, there is no guarantee that interference will not occur in a particular installation. If this equipment does cause harmful interference to radio or television reception, which can be determined by turning the equipment off and on, the user is encouraged to try to correct the interference by one or more of the following measures:

- Reorient or relocate the receiving antenna.
- Increase the separation between the equipment and receiver.
- Connect the equipment into an outlet on a circuit different from that to which the receiver is connected.
- Consult the dealer or an experienced radio/TV technician for help.

NOTE: This device and its antenna(s) must not be co-located or operation in conjunction with any other antenna or transmitter. The 5150-5250MHz of this equipment is only used indoors

RF Exposure Statement

To maintain compliance with FCC's RF Exposure guidelines, This equipment should be installed and operated with minimum distance of 20cm from the radiator to your body. This device and its antenna(s) must not be co-located or operation in conjunction with any other antenna or transmitter