

Actiontec®

USER MANUAL
zControl



Introduction

This manual will guide you through the setup of your ActionTec zControl, *the* breakthrough system that will make your home control and home monitoring easy and enjoyable!

Please make sure you read all instructions before proceeding with the installation.

Your package contains the following items:

- (1) ActionTec zControl
- (1) Power supply
- (1) Stand for putting the zControl in a vertical position
- (1) Ethernet cable
- (1) Accompanying CD (includes complete User Manual)
- (1) Quick Start Guide

It may also contain any or all of the following items:

- (1) Panasonic BL-C10A, BL-C20A, or other IP Camera
- (1) Z-Wave Appliance module
- (1) InTouch occupancy sensor CA9000
- (2) Z-Wave Lamp modules
- (1) Intermatic Wireless Handy Remote Controller

Now it's time to activate and register your ActionTec zControl, get familiar with the User Interface, and learn how to configure your home control and home monitoring devices.



Table of Contents

1	Inspecting Your zControl	1
1.1	Inspecting the Ports on Your zControl	1
1.2	Inspecting the LEDs on Your zControl	1
2	Connection, Registration, and Activation	2
2.1	Connecting to the Internet	2
2.2	Registration	2
2.3	Activation	4
3	Accessing the User Interface	5
3.1	UPnP Access	5
3.2	IP Address Access (Advanced)	6
3.3	Mobile Device Access	6
4	Overview: Basic UI Features and Elements	8
4.1	Administrator Mode	8
4.2	Settings	8
4.3	Devices	9
4.4	Rooms	9
4.5	Scenes	9
4.6	Schedules	9
4.7	Monitor	9
4.8	Dashboard	9
4.9	Mobile UI	10

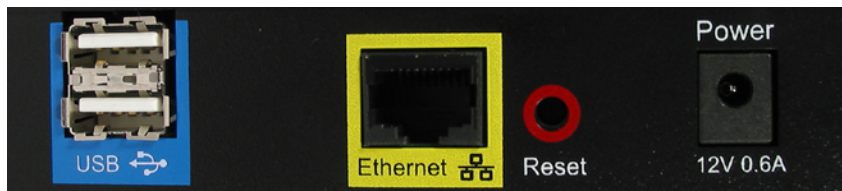
5	Managing Z-Wave Devices	14
5.1	Adding Z-Wave Devices	14
5.2	Adding Z-Wave Devices (UI method)	14
5.3	Removing Z-Wave Devices	15
6	Installing Home Monitoring Devices	16
6.1	Installing Motion/Occupancy Sensors	16
6.2	Installing UPnP Cameras	16
6.3	Installing non-UPnP Cameras	17
7	Advanced UI Features	18
7.1	Device Management	18
7.2	Rooms, Scenes, and Schedules	18
7.3	Monitoring	22
7.4	Triggers	23
7.5	Messages	24
7.6	Controlling Multiple zControls	25
8	Suggestions	27
9	Troubleshooting	28
9.1	Unable to Register with Portal Server	28
9.2	Unable to Access zControl UI	28
9.3	Unable to Control Device	28
9.4	Browser Becomes Unresponsive	29
9.5	zControl Becomes Unresponsive or Online LED Is Not Solid Green	29
9.6	Unable to Control My Z-Wave Appliance Module	29
9.7	Unable to Control My Z-Wave Lamp Module	29
9.8	Motion detector Is Not Being Detected	30

9.9	Motion Detector Takes Too Much or Too Little Time to Return to “No motion” State	30
9.10	Unable to Access my Panasonic IP Camera	30
9.11	Unable to View My Panasonic IP Camera Video	30
9.12	Why Do I Have an Upgrade Notification Message on My zControl Interface?	31
9.13	Cannot Add New Z-Wave Devices to My zControl	31
9.14	Understanding the LEDs	32
10	Appendix A - Remote Controllers (Advanced Setup)	33
10.1	Preparing the zControl to Use the Remote Controller	33
10.2	Setting Up the Intermatic CA-09 Remote Controller	33
10.3	Programming the zControl to Use the Remote Controller	34

1 Inspecting Your zControl

1.1 Inspecting the Ports on Your zControl

Let's take a look at the back of your zControl to see all of the ports and their uses.



- › (2) USB ports – reserved for your future USB devices; the USB ports can be used for external, local storage such as an external hard drive or memory stick
- › Ethernet port – connects the zControl to your network (for example, to an Ethernet hub or directly to your gateway/router) by means of the included Ethernet cable
- › Reset button – restarts your zControl
WARNING: Normal functionality will be interrupted until the zControl has fully restarted
- › 12VDC 1.4A – connects to your power supply

1.2 Inspecting the LEDs on Your zControl

You'll notice several LEDs on the front of your zControl.

These LEDs provide information on the zControl's status. In general, when you see green, everything is working correctly. When choosing a location for your zControl, remember to make sure that the LEDs are easily visible. For more information on the LEDs, consult the LED matrix on the last page of this manual.



2 Connection, Registration, and Activation

2.1 Connecting to the Internet

1. Plug one end of the provided Ethernet cable into the **Ethernet** port of your zControl, and the other end into your router
2. Plug one end of the power cable into the **12VDC 1.4A** port of your zControl and the other end into a wall socket or power strip. The **Power** LED on the front of the zControl will turn solid green
3. The **Ethernet** LED on the front of the zControl will blink green until the zControl has obtained an IP address, at which point the **Ethernet** LED will turn solid green. This can take up to two minutes**NOTE:** Your zControl is pre-configured to receive IP address automatically via the DHCP mechanism used in most home networks. If no DHCP server is present on the network, your zControl will default to the IP address 192.168.1.55.

Once the zControl is connected to the local network, it will connect to the Internet automatically. You'll know it's connected when the **Online** LED on the front of the zControl starts blinking green.

You'll need the zControl to have Internet connectivity so that you can **Activate** and **Register** it online. Once you've successfully **Registered** and **Activated** your zControl, the **Online** LED will turn solid green.

2.2 Registration

Now that your zControl is on, connected to your local network, and has Internet connectivity, it's time to **Register** with the Portal Server.

Open your preferred web browser and go to <http://digitalgardeneronline.com/zControl>. You'll see this screen:



Click on [New User Registration](#). You'll see a screen like this one:

4HOMEMEDIA Log in

WELCOME TO 4HOMEMEDIA.NET CUSTOMER REGISTRATION PAGE

Already registered? Click here to login.

* Login name: johns

* Password: *****

* Confirm Password: *****

* First name: John

* Last name: Smith

* Email: johnsmith@4homemedia.net

Home phone: 408-111-2233

Cell phone: 650-111-2233

Cell phone model: UT Starcom ppc vc6700

Business phone: 408-777-8899

Address: 1234 Borregas ave.
Suite #101

City: Sunnyvale

State: CA

Zip: 94089

Country: United States of America

Submit

Provide all of the required information and whatever optional information you like.

NOTE: Make sure you write down your login name and password in a safe place.

Upon successful [Registration](#), you should see the following screen:

MY ACCOUNT HOME PAGE

Home

Activate ControlPoint

Configure Alerts

Logout

Your registration was successful. Click in "Activate ControlPoint" to continue activating your ControlPoint.

Customers Name: Richard

Personal Info Payments Services Products

Edit Personal Info | Change Password

Login name:

First name:

Last name:

Email:

Home phone:

Cell phone:

Business phone:

www.4homemedia.com Portal Software Version 1.3-pre5

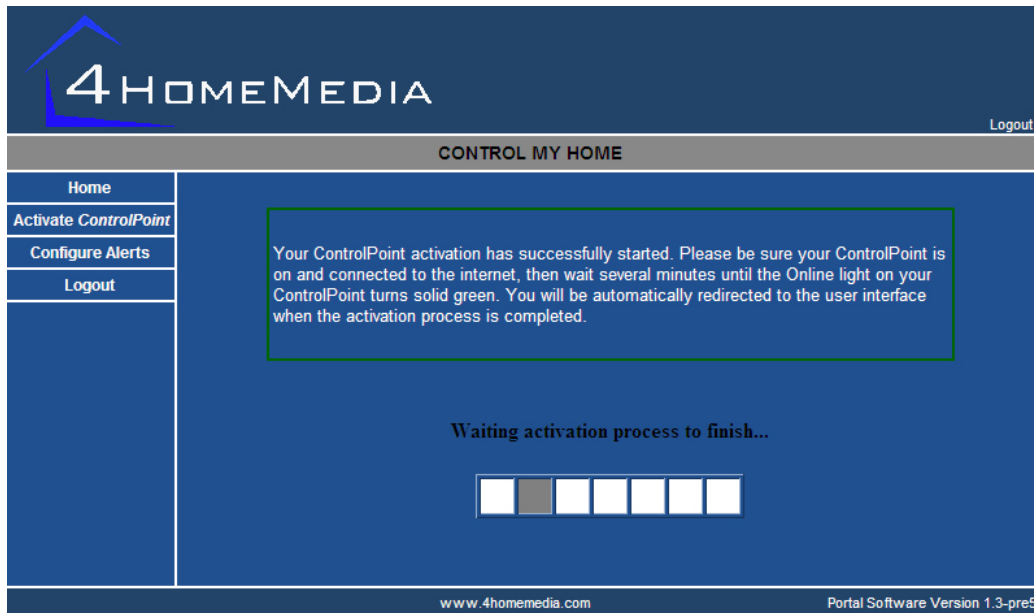
2.3 Activation

Activation will allow you to start using your zControl, access your zControl User Interface, and receive upgrades and new services as they become available.

Open a browser window and go to <http://digitalgardeneronline.com/zControl> again, click on **Manage My Profile**, and log in. From the menu on the left side of the screen, click on the **Activate ControlPoint** option. On that screen, you'll need to provide

- › A friendly name that you want to use to identify your zControl (note: underscores are not allowed). We recommend giving your zControl a unique and distinctive name.
For example: "John Smith's ControlPoint"
- › Your zControl's MAC address, which can be found on the label on your zControl
For example: 00:06:D3:A8:00:15 **OR** 0006D3A80015
- › Your time zone (note: you'll need this to be correct to take advantage of zControl's **Schedule** feature)
For example: PST if you live in the Pacific Time Zone

After you click **Continue**, you'll see this screen:

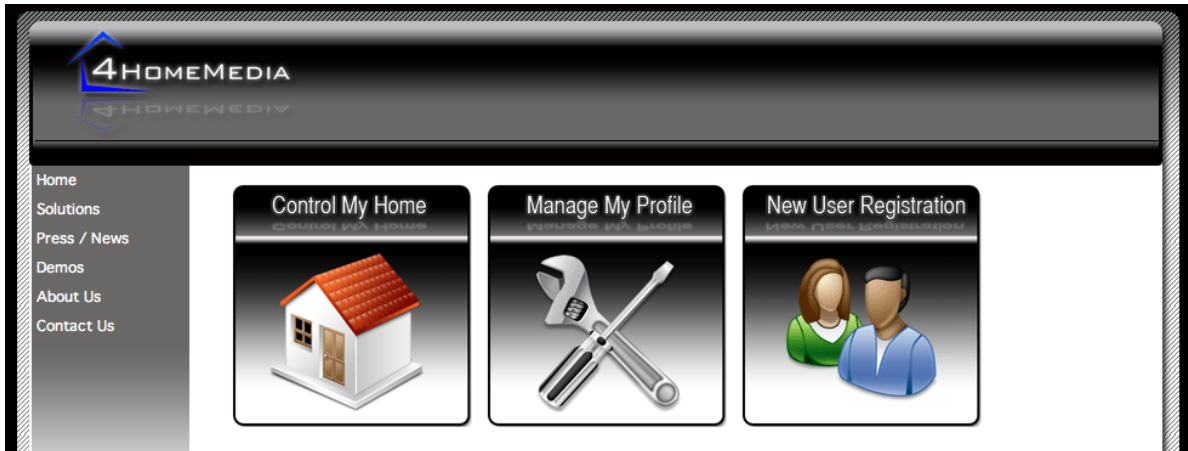


Once the **Activation** process is complete, your browser will be automatically redirected to the User Interface. We recommend that you add the User Interface to your Bookmarks/Favorites.

NOTE: Some browsers will do this automatically.

3 Accessing the User Interface (UI)

The best and easiest way to access the User Interface is to open a browser window and go to <http://digitalgarden-eronline.com/zControl> where you'll see this screen again:



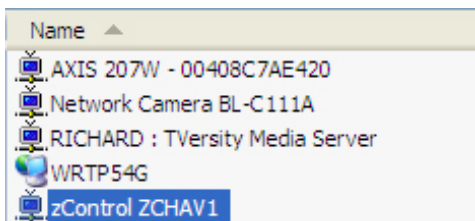
Once there, click on [Control My Home](#). You can use this method to access your zControl UI from any computer -- at home, at work, abroad -- anywhere!

For your convenience, there are also several other ways to access the UI.

3.1 UPnP Access

Once your zControl is turned on and connected to your network, you should be able to see it automatically as a UPnP (Universal Plug-and-Play) device. In order to confirm that UPnP is enabled on your Windows PC, open [My Network Places](#) via the [Start](#) menu or the associated icon on your desktop. If the text in the left panel says "Show icons for networked UPnP devices" (circled in red on the right), click on it.

With UPnP enabled, the zControl will show up in the list as [zControl ZCHAV1](#) (highlighted on the screenshot below):



Simply double-click on the [zControl ZCHAV1](#) icon to access the User Interface (UI). Your default browser will launch automatically and display the zControl UI.

3.2 IP Address Access (Advanced)

Advanced users: you can obtain your zControl's IP address by looking at your router's list of attached devices. If you know your zControl's IP address, you can enter it into your browser's address bar to access the UI from any computer on your network. Note that if the zControl obtains its IP address dynamically, its IP address may change each time the zControl **or** the DHCP server is restarted.

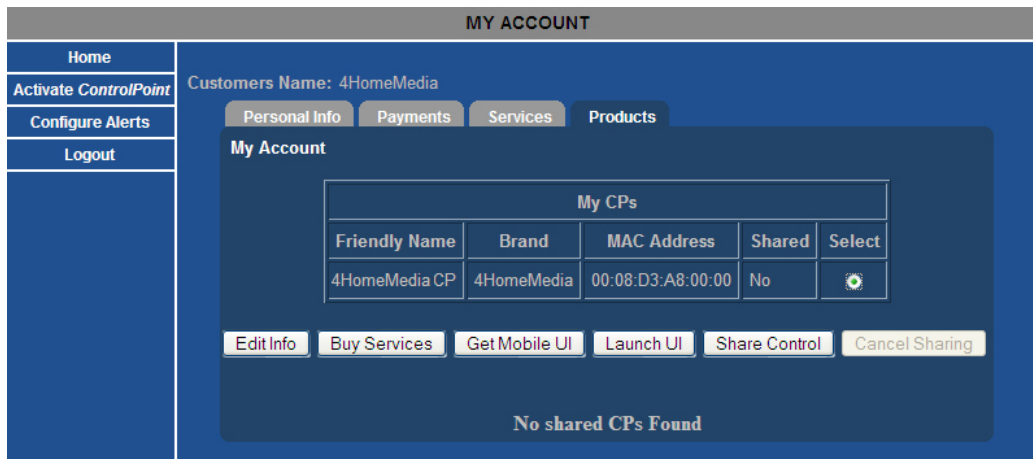
3.3 Mobile Device Access

3.3.1 Downloading the UI to your Mobile Device

Any Smartphone running the Windows Mobile operating system with Adobe Flash Lite 2.1 can access the UI. To set up the UI on your mobile device, open a browser (on that device or any computer) and go to <http://digitalgardeneronline.com/zControl>. Then click [Manage My Profile](#) and log in.

NOTE: If you did not enter your cell phone number when you were [Registering](#), you must do so now in order to download the UI onto your mobile device. Simply click [Edit Personal Info](#) and type the number into the [Cell phone:](#) field, then click [Update](#).

You'll see a screen like this one:



Click on the [Products](#) tab. Click the radio button for your zControl, then click [Get Mobile UI](#).

Click [OK](#) when asked for permission to send an SMS message to the cell phone number you entered earlier.

When you receive the SMS message (this may take several minutes), it will contain a download link. Open the link on your mobile device and the UI will be downloaded automatically. If Adobe Flash Lite 2.1 is not installed, it will also be downloaded automatically. Depending on your mobile device, you may have to confirm/okay the installation steps.

Whenever a mobile UI upgrade is available, your mobile device will receive another SMS message with a download link. Just open the link and the UI will be upgraded automatically.

3.3.2 Accessing the Mobile UI

An icon labeled [Hydrogen](#) will be added automatically to your main screen. Opening it will activate the mobile UI. You will be prompted to enter your login name and password.

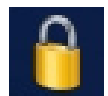
4 Overview: Basic UI Features and Elements

Let's take a minute to get familiar with the basic elements of the UI and what they do. We'll get into more detail later, after several devices have been configured. The first thing you see when you access your UI will be this screen. Until you've configured some devices, all of those panes will be empty. They may also be different sizes -- you can resize them at any time by clicking on and dragging the bottom-right corner of any pane.



4.1 Administrator Mode

In the bottom-right corner of the UI, you'll find two icons. Clicking on the lock icon prompts you to enter your PIN (or *set* your PIN, if one has not been set). Entering the correct PIN will turn on **Administrator Mode**. You will need to be in **Administrator Mode** to configure and take advantage of many of the UI's advanced features.



4.2 Settings

Next to the lock icon, you'll see an icon that looks like a laptop. Clicking on it will let you choose the language in which the UI is displayed and to choose Celsius or Fahrenheit for temperature displays. Clicking on the **Settings** icon while in **Administrator Mode** will allow you to make more changes.



4.3 Devices

Near the top of the UI, you'll see a row of 6 icons that form the [main menu](#). The leftmost icon is labeled [Devices](#). Clicking on it will bring you to a listing of all of the devices the zControl has discovered. We haven't configured any devices yet, so this list should still be empty.



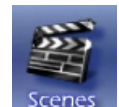
4.4 Rooms

Next, you'll find the [Rooms](#) icon. Like the list of devices, the list of rooms will be empty. After some devices have been configured, clicking on [Rooms](#) will allow you to organize those devices into groups according to their locations.



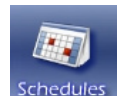
4.5 Scenes

Next, you'll find the [Scenes](#) icon. Like the lists of rooms and devices, the list of scenes will be empty. [Scenes](#) are an advanced feature which allows you to control groups of rooms and devices simultaneously.



4.6 Schedules

Next, you'll find the [Schedules](#) icon. Like the lists of devices, rooms, and scenes, the list of schedules will be empty. [Schedules](#) are an advanced feature which allows you to automate your home control. For instance, you can have the zControl automatically turn on the lights in the living room at 6 o'clock every evening.



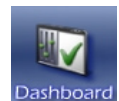
4.7 Monitor

Next, you'll find the [Monitor](#) icon. After you've installed one or more cameras, clicking the [Monitor](#) icon will allow you to view and control your camera(s). It will also allow you to create, watch, and delete recordings.



4.8 Dashboard

All the way on the right of the [main menu](#) is the [Dashboard](#) icon. The [Dashboard](#) allows you to see and control [Devices](#), [Rooms](#), [Scenes](#), [Schedules](#), and [Cameras](#) on a single screen. In addition, the [Messages](#) pane is visible from the [Dashboard](#). [Messages](#) keep you informed about changes in the status of the zControl as well as attached devices. Note that you can select [Cameras](#) from the pull-down menu multiple times to open multiple [Camera](#) panes.



4.9 Mobile UI Features

When you load the mobile UI, you will be asked to enter your username and password.

If you would like to have your credentials memorized so you can login automatically, check the “Auto Login” checkbox by using the select button on your Smartphone.

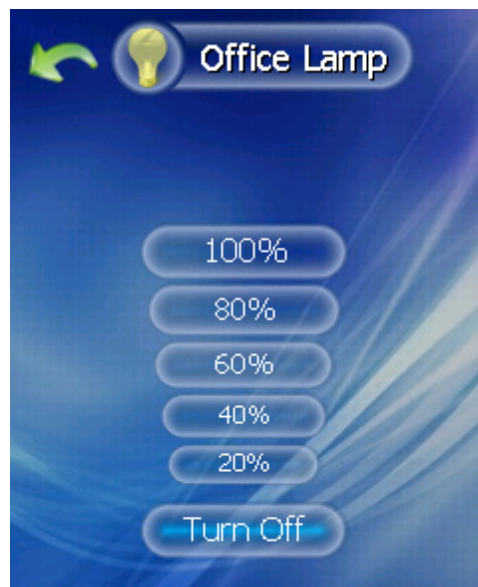
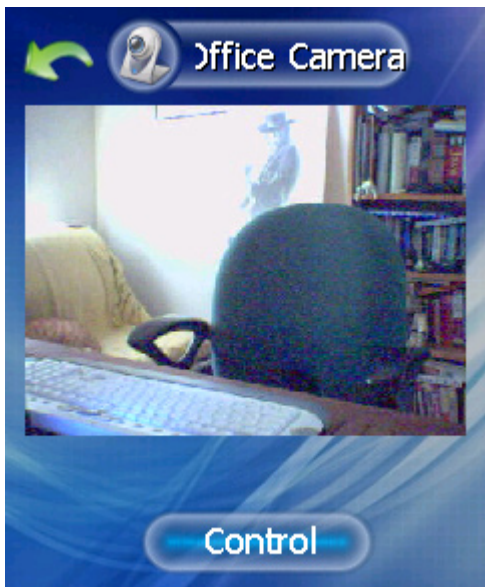


The functions and controls in the Mobile UI are very similar to the zControl UI and include the following options:

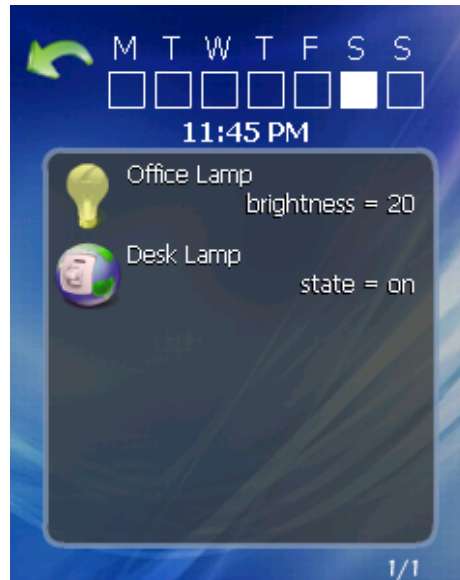
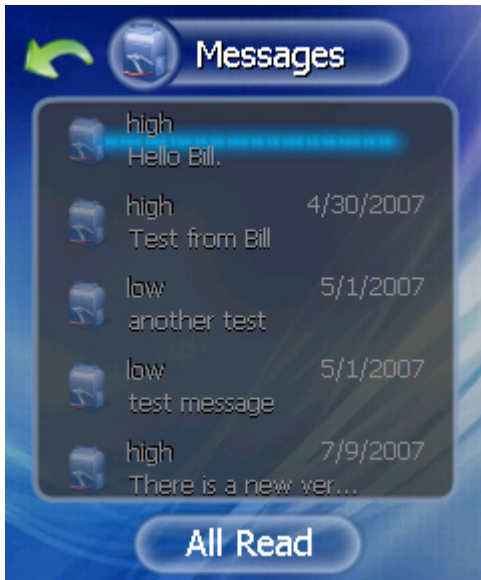
- › [Devices](#) – view and control your devices
- › [Rooms](#) – view and control your rooms
- › [Scenes](#) – view and run configured Scenes
- › [Schedules](#) – view configured Schedules
- › [Messages](#) – view received messages and alerts
- › [Switch CP](#) – if you use or own more than one zControl
- › [Settings](#) – manage your preferences
- › [Logout](#) – log out of the Mobile UI



All devices are detected automatically and show up in exactly the same way as in the zControl UI. They are grouped by the device class: "Cameras", "Switches", "Lights", etc.



The **Cameras** view allows you to monitor and control your cameras in real-time. In order to switch to **"Control"** mode you have to click the button at the bottom to change to **"Controlling"**. This means that now you can use right, left, up and down controls on your Smartphone keyboard to move the camera to a desired position.



The [Messages](#) view allows you to read the messages and see their timestamps.

Message / Alerts of high importance will pop-up in Mobile UI automatically as they might need your immediate attention. Examples of such events might be:

- > Your front door is open
- > Important message from the management system

The [Schedules](#) view allows you to see schedules configured for your ControlPoint.

The [Scenes](#) view allows you to see and run the scenes created for your ControlPoint.

4.9.1 Settings and configuration options

The Mobile UI connection to the Portal is primarily done via the Smartphone's data connection. It is also possible to establish a direct (LAN) connection to your ControlPoint if your Smartphone supports WiFi connectivity. In this case you need to do the following:

- > Ensure your WiFi connection is up (per configuration options in your Smartphone)
- > On the Hydrogen login screen chose "[Local Connect](#)" option.
- > A new field will open up, type in the IP address of your controlpoint.
- > Click on the "[Login](#)" button to connect to the ControlPoint.

Other configuration options are available in the "[Settings](#)" menu.

In Release 1.2 they include:

- > Language selection: English and Spanish.
NOTE: It is important to understand that only 4Homemedia menu options and messages will be presented in

the selected language. All customer-created names will not be affected by this selection. (e.g., if you named your device “Floor lamp”, it will be displayed as a “Floor lamp” regardless of the language selected in the UI.)

- › Temperature display: allows you to choose between Fahrenheit and Celsius scales.

5 Managing Z-Wave Devices

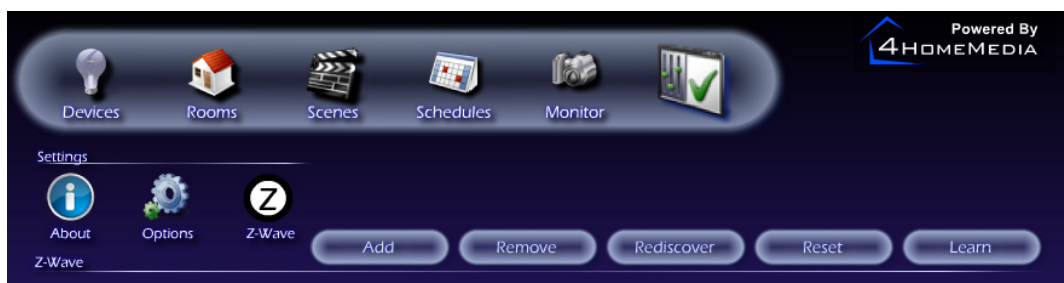
5.1 Adding Z-Wave Devices

There are many different kinds of Z-Wave devices. These include lamp modules, thermostats, motion/occupancy sensors, blinds/shades, fans, appliance modules, and so on. There is one simple installation procedure for all of these devices:

1. Plug in the Z-Wave device within six feet of the zControl
2. Push the blue **Z-Wave** button on the front of the zControl. The **Activity** LED will begin blinking green slowly
3. Push the button on the Z-Wave device (it will be labeled **On/Off**, **Service**, **Program**, or something similar)
4. When the **Activity** LED turns solid green or starts blinking green rapidly, the Z-Wave device has been successfully added
5. If the **Activity** LED blinks red slowly three times, the Z-Wave device has not been successfully added. Go back to step 1 and repeat the procedure
6. Repeat steps 1 through 5 for each Z-Wave device
7. Unplug your Z-Wave devices and plug them into their intended places in your home
8. Open your zControl User Interface
9. Turn on **Administrator Mode** and then click on the **Settings** icon in the bottom-right corner
10. Click on the **Z-Wave** icon
11. Click on the **Rediscover** button
12. Click on **Devices**. The list should now include the new Z-Wave devices

NOTE: If you unplug a Z-Wave device (to move it to another location, for example) after completing this procedure, you will need to **Rediscover** it. If this does not work, you may need to repeat the installation procedure for that device starting from step 1.

5.2 Adding Z-Wave Devices (UI method)



1. Open your zControl User Interface
2. Turn on **Administrator Mode** and then click on the **Settings** icon in the bottom-right corner
3. Click on the **Z-Wave** icon

4. Click on the [Add](#) button. The [Activity](#) LED will begin blinking green slowly
5. Push the button on the Z-Wave device (it will be labeled [On/Off](#), [Service](#), [Program](#), or something similar)
6. When the [Activity](#) LED turns solid green or starts blinking green rapidly, the Z-Wave device has been successfully added
7. If the [Activity](#) LED blinks red slowly three times, the Z-Wave device has not been successfully added. Go back to step 4 and repeat the procedure
8. Repeat steps 4 through 7 for each Z-Wave device
9. Unplug your Z-Wave devices and plug them into their intended places in your home
10. Click on the [Rediscover](#) button
11. Click on [Devices](#). The list should now include the new Z-Wave devices

NOTE: If you unplug a Z-Wave device (to move it to another location, for example) after completing this procedure, you will need to [Rediscover](#) it. If this does not work, you may need to repeat the installation procedure for that device starting from step 1.

5.3 Removing Z-Wave Devices

1. Open your zControl User Interface
2. Turn on [Administrator Mode](#) and then click on the [Settings](#) icon in the bottom-right corner
3. Click on the [Z-Wave](#) icon
4. Click on the [Remove](#) button
5. Push the button on the Z-Wave device (it will be labeled [On/Off](#), [Service](#), [Program](#), or something similar)
6. There will be a visible notification in the UI when the device has been successfully removed
7. Click on [Devices](#) to ensure that the list no longer includes the removed Z-Wave device

6 Installing Home Monitoring Devices

6.1 Installing Motion/Occupancy Sensors

To install a motion/occupancy sensor, simply follow the above instructions for installing Z-Wave devices. Once the motion/occupancy sensor is installed, it may be necessary to push the button on the front of the device one more time to activate it.

6.1.1 Setting Up the CA9000

The CA9000 sensor has a 5-position switch along its bottom side that determines how quickly it responds to the *absence* of motion/occupancy. Setting the switch into the position closest to the power connector jack will put the CA9000 into “manual off mode.” In “manual off mode,” the CA9000 will turn on when it detects motion/occupancy and remain in its on state until manually turned off. Moving the switch away from the power connector jack will put the CA9000 into 15 minute delay, 10 minute delay, 5 minute delay, and “pulse mode,” respectively. In “pulse mode,” the CA9000 will turn off approximately 5 seconds after it stops detecting motion/occupancy. “Pulse mode” is recommended.



6.2 Installing UPnP Cameras

UPnP (Universal Plug-and-Play) cameras will be automatically detected by the zControl once they are on the network. Consult your camera’s documentation to learn how to set it up and configure it for network access. It will appear in your device listing as well as the [Cameras](#) pane on your [Dashboard](#).

6.2.1 Panasonic BL-C10A, BL-C1A, BL-C111A, BL-C131A Camera Setup Notes

Although these cameras are UPnP-capable, they typically ship with UPnP turned off. To set them up, you will need to do the following:

1. Plug in the camera’s power and Ethernet cables. If 20 minutes have passed since you plugged in the camera and you have not continued to step 2, unplug it and plug it in again
2. With a pen or pencil, press the [Factory Default Reset](#) button on the bottom of the unit
3. Insert the CD that came with the camera into a computer on the same network as the camera. The [Setup.exe](#) program on the CD should auto-launch
4. Press the [Camera Setup](#) button. After a moment, an [Easy Setup](#) dialog will pop up
5. Select the entry in the [Easy Setup](#) dialog and press the [Execute](#) button
6. Click on the [Automatic Setup](#) option. Your browser will open to the [Security: Administrator](#) page
7. Choose an administrator name and password for the camera. Press [Save](#). You may see a Windows dialog asking for the camera’s username and password. Enter them, select [Remember my password](#), and press [OK](#)
8. Your browser will now open to the camera’s UI. You should see the camera image

9. Click on the [Setup](#) tab at the top of the page, then click on [DHCP](#). At the bottom of the [DHCP](#) page, press [Save](#)
10. Close all setup software, including your browser, and restart the camera by unplugging it and plugging it back in

6.3 Installing non-UPnP Cameras

To install a non-UPnP camera, consult its documentation to learn how to assign it an IP address and configure it for network access. Once it is on the network, it will be detected automatically by the zControl and appear in your device listing as well as the [Cameras](#) pane on your [Dashboard](#).

NOTE: Some cameras require the user to enter a username and password. Consult the documentation of such cameras to learn how to set them to allow [anonymous access](#). Once they've been set to be accessible [anonymously](#) (without entering a username and password), they will appear in your device listing as well as the [Cameras](#) window on your [Dashboard](#).

7 Advanced UI Features

7.1 Device Management



Now that you have some devices set up, open your UI and click on the [Devices](#) icon. Clicking on any device in the listing will let you [focus](#) on that device. If you're in [Administrator Mode](#), you can also rename it (we recommend giving your devices unique and distinctive names) and also use the [Wink](#) feature. [Wink](#) will turn on and off the specified lamp/appliance module at 3 second intervals, which is useful to help you identify Z-Wave devices in your home. Simply press [Wink](#) again to disable.. [Focusing](#) on a device brings up a different set of options depending on what kind of device it is. For example,

- › [Focusing](#) on a lamp lets you turn it on or off, and also to set its brightness level from 0-100 percent
- › [Focusing](#) on a thermostat lets you turn the temperature up or down
- › [Focusing](#) on a camera lets you see what the camera sees and, depending on the camera model, control other features such as pan, tilt, and zoom
- › [Focusing](#) on a motion/occupancy sensor lets you set up event triggers

7.2 Rooms, Scenes, and Schedules

[Rooms](#), [Scenes](#), and [Schedules](#) are some of the most useful and powerful features of the zControl. They allow you

to control devices in your home by location, by situation, and by time.

7.2.1 Rooms

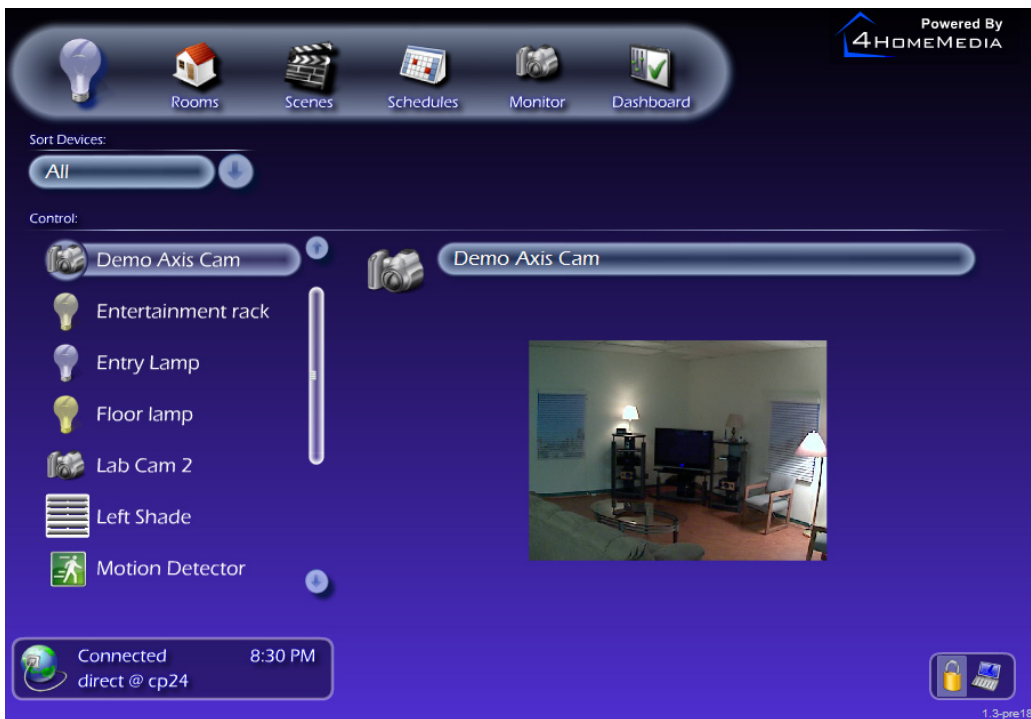
By organizing your devices into **Rooms**, you can make it easier to find exactly the device you want to control. To create a **Room**, you'll need to do the following:

1. Turn on **Administrator Mode**
2. Click the **Rooms** icon. A new set of buttons will appear under the **main menu**:



3. Click the **Rooms: Add** icon and type in the **Room's** name
4. Click the **Devices: Add** icon and select at least one device from the list
 - › You can use the pull-down menu to display only one type of device at a time
 - › You can use **<CTRL>-click** or **<SHIFT>-click** to select multiple devices at once

When you add a device to a **Room**, that device will appear in the listing under the **Room** name. Clicking on any device in the listing will let you **focus** on that device. Note that if you are in **Administrator Mode**, you can **Add** or **Delete** a **Room**, **Edit** a **Room's** name, or **Add** more devices to a **Room** at any time. Once you've set up two or more **Rooms**, you can choose which **Room** to display from the pull-down menu. When you're done, it'll all look a lot like this:



7.2.2 Scenes



By creating [Scenes](#), you can control whole [Rooms](#) and groups of devices with the push of a button. To create a [Scene](#), you'll need to:

1. Turn on [Administrator Mode](#)
2. Click the [Scenes](#) icon. A new set of buttons, just like the ones for [Rooms](#), will appear under the [main menu](#)
3. Click the [Scenes: Add](#) icon and type in the [Scene's](#) name
4. Click the [Devices: Add](#) icon and select at least one device from the list
 - › You can select a [Room](#) to add all of the devices in it to the [Scene](#)
 - › You can use the pull-down menu to display only [Rooms](#) or only one type of device at a time
 - › You can [<CTRL>-click](#) or [<SHIFT>-click](#) to select multiple devices or [Rooms](#) at once

When you add a device to a [Scene](#), that device will appear in the listing under the [Scene](#) name. Clicking on any device in the listing will let you [focus](#) on the device. Rather than allowing you to control a device's current state, [focusing](#) on a device while editing a [Scene](#) allows you to set its [Scene state](#). When a [Scene](#) is [Run](#), all devices in that [Scene](#) immediately switch to their [Scene states](#).

For example, you've created a [Scene](#) named "Wake up!" You've also added to it all of the devices in Bobby's room, set the [Scene states](#) of all of the lights to 100 percent brightness, and set the [Scene state](#) of the radio to [On](#). Now you can open your UI at any time, click the [Scenes](#) icon, select "Wake up!" from the pull-down menu, and click [Run](#). When you do, all of the lights in Bobby's room will turn on at maximum brightness and the radio will turn on. Hopefully, this will be enough to wake him in time for school.

You can [Run](#) a [Scene](#) at any time. Note that you must be in [Administrator Mode](#) if you want to [Add](#) or [Delete](#) a [Scene](#), [Edit](#) a [Scene's](#) name, or [Add](#) more devices to a [Scene](#).

7.2.3 Schedules



By creating [Schedules](#), you can set the [Scenes](#) you've already created to be automatically [Run](#) at a time of your choice. A [Schedule](#) is essentially a [Scene](#) that [Runs](#) at a preset time. To create a [Schedule](#), you'll need to

1. Turn on [Administrator Mode](#)
2. Click the [Schedules](#) icon. A new set of buttons, just like the ones for [Rooms](#) and [Schedules](#), will appear under the [main menu](#)
3. Click the [Schedules: Add](#) icon
4. Type in the [Schedule's](#) name and set the days and time when it should [Run](#)
5. Click the [Devices: Add](#) icon and select at least one device from the list
 - ▶ You can select a [Scene](#) to add all of the devices in it; adding a [Scene](#) will automatically import the [Scene](#) states of all of the devices in it
 - ▶ You can use the pull-down menu to display only [Scenes](#) or only one type of device at a time
 - ▶ You can [<CTRL>-click](#) or [<SHIFT>-click](#) to select multiple devices or [Scenes](#) at once

As in a [Scene](#), you can change a device's [Scene state](#) by [focusing](#) on it from the listing under the [Schedule](#) name. As before, you must be in [Administrator Mode](#) if you want to [Add](#) or [Delete](#) a [Schedule](#), [Edit](#) a [Schedule's](#) name or time settings, or [Add](#) more devices or [Scenes](#) to a [Schedule](#). You can also click [Run](#) to test the [Schedule's](#) behavior.

7.3 Monitoring



Clicking on the [Monitor](#) icon in the [main menu](#) will bring up two panes. The top one will display whatever the selected camera “sees” and is labeled “Display.” The bottom one shows thumbnails of what each camera “sees” and is labeled “Filmstrip.”

7.3.1 The “Filmstrip” Pane

Clicking on any thumbnail in the [Filmstrip](#) pane will select that camera and display that camera’s feed in the [Display](#) pane. At the bottom of the [Filmstrip](#) pane, you’ll find three buttons: a left arrow, a right arrow, and a [Play](#) button. Clicking the left or right arrow will select the thumbnail next to the one you currently have selected. Clicking the [Play](#) button will automatically cycle through your camera displays until you click the [Pause](#) button.

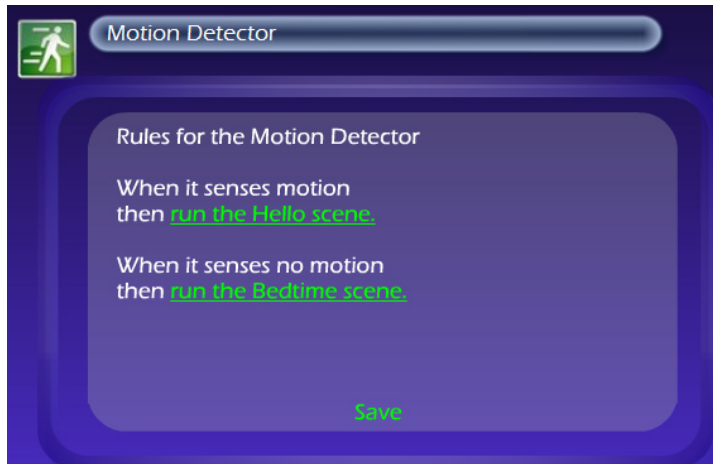
7.3.2 The “Display” Pane

At the bottom of the [Display](#) pane, you’ll find a red [Record](#) button and, in the bottom-left corner, the [Archives](#) button. If you do not have a memory stick or other external storage device connected to one of the USB ports of your zControl, these buttons will do nothing. If you do have such a device, then clicking the [Record](#) button on a camera’s display will record video from the camera directly to your storage device. Clicking the [Archives](#) button will open a third pane (labeled “Archives”) which will contain a full list of your recorded videos. You can view these recordings at any time through the [Archives](#) pane. If you’re in [Administrator Mode](#), you can also delete recordings.

If the selected camera has features like pan, tilt, presets, and zoom, you can control those features from the [Display](#) pane.

7.4 Triggers

Triggers are one of the most powerful features of the zControl. Setting up triggers allows changes in a motion/occupancy sensor's state to "trigger" many of the zControl's other functions. For example, a light can be set to turn on whenever motion/occupancy is detected in the room. To set up a trigger, you'll need to [focus](#) on a motion/occupancy sensor through the device listing. A pane will appear with two [Rules](#) listed. It looks like this:

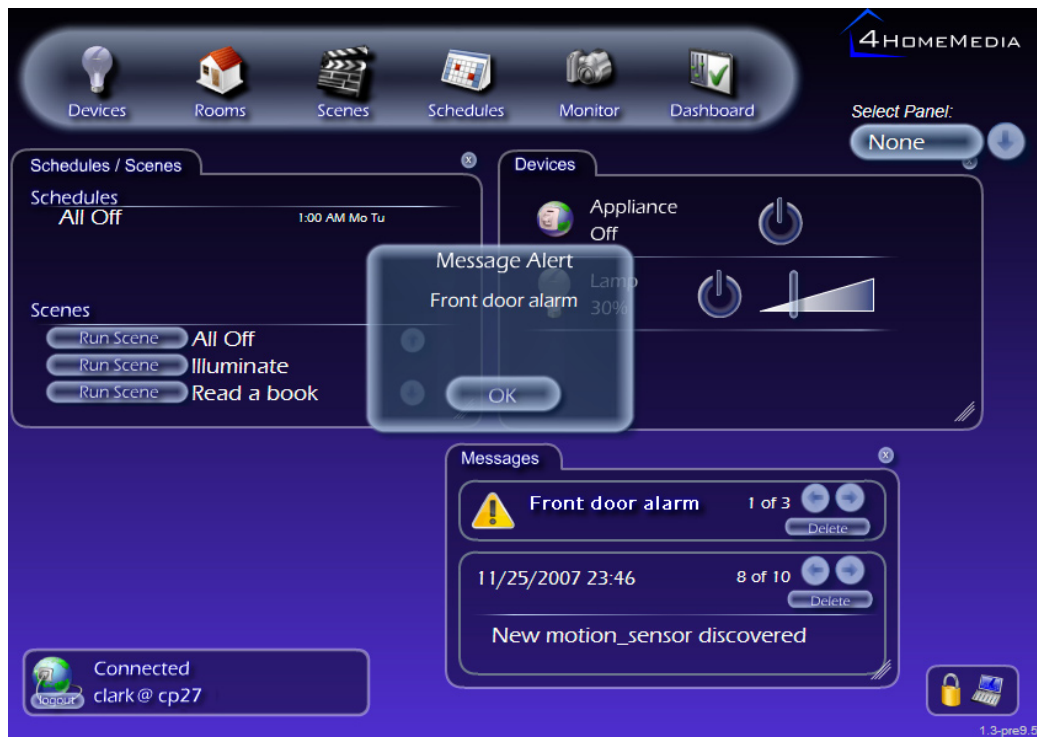


To edit a [Rule](#), turn on [Administrator Mode](#) and click on it. A [Rule](#) consists of two parts:

1. The first part is the trigger. A motion/occupancy sensor has two possible states, "motion/occupancy detected" and "no motion/occupancy detected." Each of these states can act as a trigger
2. The second part is the triggered behavior. A triggered behavior is a [Scene](#) being [Run](#)
 - › If you want motion/occupancy in a room to trigger both the light turning on and the blinds opening, for example, you'll need to create a [Scene](#) in which the light's [Scene state](#) is [on](#) and the blinds' [Scene state](#) is [open](#)
 - › It is often a good idea to create two "opposite" [Scenes](#). For example, if you've created one [Scene](#) that turns on a lamp and is [Run](#) whenever motion/occupancy is detected, you may also want to create another [Scene](#) that turns off the lamp and is [Run](#) whenever no motion/occupancy is detected

Whenever the motion/occupancy sensor reports motion/occupancy, the first [Rule](#) is triggered and the associated [Scene](#) is [Run](#). Whenever the sensor reports no motion/occupancy, the second [Rule](#) is triggered and the associated [Scene](#) is [Run](#).

7.5 Messages



You can see the [Messages](#) pane by selecting [Messages](#) from the pull-down menu on your [Dashboard](#). The [Messages](#) pane is divided into two parts, one (marked with an exclamation point) for [Alerts](#), and one for [Messages](#).

7.5.1 Messages

Most [Messages](#) you receive will inform you about your zControl discovering an additional device. You can scroll through [Messages](#) by clicking on the left and right arrows. You can also delete [Messages](#) by clicking on the [delete](#) button.

7.5.2 Alerts

[Alerts](#) are essentially important or time-sensitive [Messages](#). Typically, [Alerts](#) will be sent by your service provider to inform you about upgrades, new features becoming available, and so on.

When you receive an [Alert](#), a small “popup” will appear in your UI. If you don’t have the UI open when you receive an [Alert](#), the “popup” will appear next time you access the UI. You can scroll through and delete [Alerts](#) in the same ways as [Messages](#).

Note that you can go to <http://digitalgardeneronline.com/zControl> and click on [Configure Alerts](#) from the left menu to set [Alerts](#) and/or [Messages](#) to be delivered to your email address, mobile device, or online chat client.

	Email message	Sms message	Yahoo IM
Low:	<input type="checkbox"/>	<input type="checkbox"/>	<input type="checkbox"/>
Medium:	<input checked="" type="checkbox"/>	<input type="checkbox"/>	<input type="checkbox"/>
High:	<input checked="" type="checkbox"/>	<input type="checkbox"/>	<input type="checkbox"/>

7.6 Controlling Multiple zControls

Before you can start controlling additional zControls, you must [Activate](#) them online.

7.6.1 Activating Additional zControls Online

If you'd like to [Activate](#) an additional zControl, simply open a browser window and go to <http://digitalgardeneronline.com/zControl>, then click on [Manage My Profile](#). Enter the username and password that you used when [Registering](#) to access your profile. Click [Activate ControlPoint](#) in the menu on the left, then enter your new zControl's information.

After you've [Activated](#) additional zControls, they'll all be accessible by going to <http://digitalgardeneronline.com/zControl> and clicking [Control My Home](#).

All [Activated](#) zControls will automatically appear on their local networks. If you have multiple zControls on one network, all of them will appear in the list of UPnP devices. They will also all be accessible by typing their unique IP addresses into your browser's address bar.

NOTE: If your local network does not have a DHCP server, every additional zControl will default to the same IP address (192.168.1.55). Because two devices on one network cannot have the same IP address, you will need to assign each zControl a different IP address before [Activating](#) another.

If you have multiple zControls on multiple networks (for example, one in your home and another in your office), only the ones on the local network will appear in the list of UPnP devices and be accessible by typing their IP addresses into a browser's address bar. *All* of them will *always* be accessible by going to <http://digitalgardeneronline.com/zControl> and clicking [Control My Home](#).

7.6.2 Choosing Which zControl to Control

When you go to <http://digitalgardeneronline.com/zControl> and click on [Control My Home](#), you may be prompted to enter your username and password. After you've done so, a window will appear with a list of all of the zControls that you have [Activated](#). Click on the one you'd like to control and then click the [Select](#) button. If you'd like to start controlling a different zControl, just open a new browser window and access it in the same way. You don't even have to close the window you currently have open!

If you have multiple zControls on one network and are accessing the UI through the list of UPnP devices, just double-click the one you'd like to control.

8 Suggestions

The ActionTec zControl is a powerful and flexible tool for monitoring and controlling your home. What follows is a list of some obvious and not-so-obvious ways of applying that power and flexibility towards simple and effective home control.

- › For home security, set up a trigger that will turn on the lights in a room when motion/occupancy is detected
- › Create a [Schedule](#) that will turn on your coffee-maker or electric teakettle so that it's ready by the time you get up or come home from work
- › To conserve energy, create a [Schedule](#) that will turn off all of the lights and devices in your home after you normally go to bed in case you forget to turn them off yourself
- › For home security, create some [Schedules](#) to turn your lights on and off at various times while you're away to create the impression that someone is home
- › Turn off your kids' computer or television to help them get their homework done on time
- › Check in on your home, even while you're away or at work. Have they sat down for dinner yet? Has Bobby finished his vegetables?
- › Set up a zControl in the home of an elderly family member. This gives them the freedom to live independently while providing you with peace of mind and the knowledge that you can always check up on them without being intrusive
- › Set up a camera and light in your nursery so you can check up on your baby quickly, easily, and quietly

9 Troubleshooting

9.1 Unable to Register with Portal Server

Symptom: Unable to [Register](#) with the Portal Server

Solution:

- › Make sure that your network connection is working properly. You should see the [Power](#) and [Ethernet](#) LEDs showing solid green and the [Online](#) LED blinking green
- › Ensure you have Internet connection, e.g. go to a known trusted website
- › Verify that you are using correct URL: <http://digitalgardeneronline.com/zControl>
- › Once logged in – make sure you provide all of the required information

9.2 Unable to Access zControl UI

Symptom: Cannot access zControl UI

Solution:

- › Confirm that UPnP is enabled
- › If no DHCP server is present on the local network, the zControl will default to the IP address 192.168.1.55. Try typing the default IP address into your browser's address bar
- › Remember that once you've [Registered](#) online and [Activated](#) your zControl, you can *always* access the user interface remotely through <http://digitalgardeneronline.com/zControl>. If this does *not* work, there is probably a problem with your router, internet connection, or zControl unit

9.3 Unable to Control Device

Symptom: Device intended for control does not show up in the UI

Solution:

- › Make sure that device is properly plugged into the wall outlet
- › Ensure that the Z-Wave device is associated with the zControl; run the [Rediscover](#) procedure again
- › Plug in the Z-Wave device within three feet of the zControl. Access your User Interface. Turn on [Administrator Mode](#), click the [Settings](#) icon in the bottom-right corner, then click the [Z-Wave](#) icon. Click the [Remove](#) button, then push the button on your Z-Wave device. Wait 30 seconds, then repeat the Z-Wave device installation procedure from step 1 for that device

9.4 Browser Becomes Unresponsive

Symptom: Browser freezing or locking up

Solution:

- › Close and restart the browser. If unresponsive, you may need to access your [Task Manager](#) by simultaneously pressing the <CTRL>, <ALT>, and <DELETE> keys once. In the [Task Manager](#), select your browser and click [End Task](#) or [End Process](#)
- › Restart the browser and access the zControl User Interface to control your devices

9.5 zControl Becomes Unresponsive or Online LED Is Not Solid Green

Symptom: zControl not responding to commands from the UI

Solution:

- › Restart the zControl by unplugging it, waiting for 10 seconds, then plugging it back in
- › Wait for the [Online](#) LED to turn solid green, then try controlling your devices through the zControl UI

9.6 Unable to Control My Z-Wave Appliance Module

Symptom: Appliance module cannot be controlled from the zControl or wall switch

Solution:

- › Repeat the procedure in section [5.1 Adding Z-Wave Devices](#)
- › Make sure that the device is properly plugged into the wall outlet
- › You may have to press the button on the appliance module to activate it

9.7 Unable to Control my Z-Wave Lamp Module

Symptom: Lamp module cannot be controlled from the zControl or wall switch

Solution:

- › Repeat the procedure in section [5.1 Adding Z-Wave Devices](#)
- › Make sure that the device is properly plugged into the wall outlet
- › You may have to press the button on the lamp module to activate it

9.8 Motion Detector Is Not Being Detected

Symptom: The CA9000 Motion detector does not show up in the UI

Solution:

- › Check the batteries. If using a power supply, check the connections
- › You may have to press the button on the motion detector to activate it
- › If neither of the above steps solves the problem, you will need to [Remove](#) the motion detector by completing the procedure in section [5.3 Removing Z-Wave Devices](#). After you've done so, repeat the procedure in section [5.1 Adding Z-Wave Devices](#)

9.9 Motion Detector Takes Too Much or Too Little Time to Return to “No motion” State

Symptom: After the CA9000 motion detector is triggered, it does not return to “No motion” state when I desire

Solution:

- › You can configure the motion sensor waiting time after activation by using the slider switch at the bottom of the motion sensor. Please refer to section [6.1.1 Setting Up the CA9000](#).

9.10 Unable to Access my Panasonic IP Camera

Symptom: I cannot see my IP camera in the [Dashboard](#), [Monitor](#), or [Devices](#) list

Solution:

- › Check the cable connections to the IP Camera (power, Ethernet) and also its connection to the router
- › Verify that the IP camera has UPnP enabled. You should be able to see it in your list of UPnP devices. See section [3.1 UPnP Access](#) to learn how to enable UPnP on your computer
- › If it is a new camera, you will need to consult the camera's manual to enable UPnP access and anonymous/guest access for the zControl to use it. Refer to section [6.2: Installing UPnP Cameras](#)

9.11 Unable to View My Panasonic IP Camera Video

Symptom: I can see my IP camera in the [Dashboard](#), [Monitor](#), or [Devices](#) menu, but I cannot see any video

Solution:

- › Check the connections to the IP Camera (power, Ethernet) and also its connection to the router
- › Try refreshing your browser screen and clicking on the camera device again
- › Unplug the power to the IP camera and plug back in. Wait for it to restart (this may take up to a minute) and try accessing it from the zControl UI again

9.12 Why Do I have an Upgrade Notification Message on My zControl Interface?

Occasionally, your zControl may receive a software upgrade with additional features. When it does, you'll see a notification like this one:



Simply press the **OK** button and you will be able to continue using your zControl while taking advantage of the new features.

9.13 Cannot Add New Z-Wave Devices to My zControl

Symptom: I am unable to add a new Z-Wave device to my zControl

Solution:

- › Are you using a remote controller?
 - › The remote controller is typically setup as the primary controller, while the zControl is set up as the secondary controller. Only primary controllers can add and remove Z-Wave devices.
 - › Please add your Z-Wave devices using the remote controller (refer to Appendix A – Remote Controllers and the Intermatic Remote Controller manual for details)
- › If you are not using a remote controller, you can try adding your Z-Wave device using the Blue Z-Wave button on the front of the zControl, or use the zControl Interface under Administration Mode. Please follow the instructions for Installing Z-Wave devices in this manual.

9.14 Understanding the LEDs

When the **Activity** and **Online** LEDs show solid orange or red, **DO NOT** turn off or restart your zControl as this may damage it. While a software or firmware download or upgrade is in progress, normal zControl functionality may be suspended.

Please refer to the following chart to guide you through LED messages.

POWER	No power	The ControlPoint Lite is on		Major error:contact technical support		
ETHERNET	No Ethernet connection	The ControlPoint Lite is obtaining an IP address		The ControlPoint Lite has obtained an IP address		
ONLINE	No Internet connection	Trying to connect to the Portal Server	Connected to the Portal Server	Software or firmware download	Software or firmware upgrade	
ACTIVITY	No Z-Wave devices connected	Slow: waiting for Z-Wave device	1 or more Z-Wave devices connected	Software or firmware download	No Z-Wave device found	Software or firmware upgrade
		Rapid: communicating with the Z-Wave device				
USB	No USB devices attached	Communicating with USB device		At least one USB device detected		
Z-WAVE	Not currently adding a Z-Wave device	At least one Z-Wave device detected				



White: LED Off



Color: Solid (non-blinking) LED of the corresponding color



Stripes: Blinking LED of the corresponding color

10 Appendix A – Remote Controllers (Advanced Setup)

Your zControl starter kit may include a remote controller or one can be purchased separately from your service provider.

The Intermatic CA-09 Wireless Remote Controller is an optional accessory that enables you to control your devices from a remote controller as well as from the zControl Interface. If you would like to control your devices with this remote controller, please follow these steps to configure your home network and zControl to use this remote.

NOTE: Once the remote controller is configured to control your Z-Wave devices, you will no longer be able to add devices using the Z-Wave button on the front of the zControl or using the [Add](#) button in the zControl Interface. The remote controller will act as the primary controller in your home and additional devices will be added using the remote controller.

10.1 Preparing the zControl to use the Remote Controller

- › Open your zControl Interface.
- › Turn on Administrator Mode and then click on the Settings icon in the bottom-right corner
- › Click on the Z-Wave icon
- › You must manually remove each Z-Wave device previously added to your zControl by using the [Remove](#) button, followed by the Program button on the Z-Wave device. Wait for confirmation that the device is removed. Repeat this step for each device in your home before proceeding to the next step.

10.2 Setting Up the Intermatic CA-09 Remote Controller

Now you must add control for each Z-Wave device module on the remote control and assign a channel number for each device. (Full instructions can be found in your remote controller manual)

Adding Z-Wave modules to the network:

- › Press the [INCLUDE](#) button on the remote and verify that the green LED is flashing.
- › Press the program button on the Z-Wave module you wish to learn and the green LED should turn SOLID indicating that it successfully learned the device.

Associating Z-Wave modules to a channel on the remote controller:

- › Press the ON and [OFF](#) buttons together for 5 seconds for the desired channel on the remote you wish to set up until both Red and Green LEDs are blinking.
- › Press and hold the [INCLUDE](#) button and while holding, press the [Program](#) button on the Z-Wave device until the LED flashes and turns SOLID green.
- › The device has been successfully associated to the channel you selected.
- › You can confirm by pressing the [ON / OFF](#) button and verify that your device turns on and off.

Repeat these steps for each Z-Wave device in your home until you have successfully added all your modules. (Make sure to assign a different channel number for each device, otherwise you could end up turning on more than one device together)

10.3 Programming the zControl to Use the Remote Controller

- › Open your zControl Interface.
- › Turn on Administrator Mode and then click on the Settings icon in the bottom-right corner
- › Click on the Z-Wave icon
- › Now using the remote, press and Hold the **INCLUDE** button for 5 seconds. Both Red and Green LEDs will flash. Release the **INCLUDE** button.
- › Press and release **Channel 2 ON/DIM** on the remote. The Green LED will flash to indicate “Transmit All information”.
- › Press the **LEARN** button on the Z-Wave Admin page on the zControl Interface

Your zControl should now be able to control your new devices.

If the Learn fails, please repeat these steps again as the remote controller may have timed out the “Transmit All Information”.

NOTE: Each time you add/remove new Z-Wave devices to the remote control, you must complete this step to Learn the new devices on the zControl).



Regulatory Compliance Notices

Class B Equipment

This equipment has been tested and found to comply with the limits for a Class B digital device, pursuant to Part 15 of the FCC Rules. These limits are designed to provide reasonable protection against harmful interference in a residential installation. This equipment generates, uses, and can radiate radio frequency energy and, if not installed and used in accordance with the instructions, may cause harmful interference to radio communications. However, there is no guarantee that interference will not occur in a particular installation. If this equipment does cause harmful interference to radio or television reception, which can be determined by turning the equipment off and on, the user is encouraged to try to correct the interference by implementing one or more of the following measures:

- > Relocate the unit and antenna (built-in)
- > Increase the separation between the equipment and receiver
- > Connect the equipment to an outlet on a circuit different from that to which the receiver is connected.
- > Consult the dealer or experienced radio/TV technician for help

Modifications

The FCC requires the user to be notified that any changes or modifications made to this device that are not expressly approved by Actiontec Electronics, Inc., may void the user's authority to operate the equipment.

Declaration of conformity for products marked with the FCC log – United States only.

This device complies with Part 15 of the FCC Rules. Operation is subject to the following two conditions:

1. This device may not cause harmful interferences, and
2. This device must accept any interference received, including interferences that may cause unwanted operation



Copyright Notice

All materials contained in this document including artwork, images, and text are protected by United States copyright law and are property of ActionTec and/or 4HomeMedia. The materials may not be published, redistributed, or altered without explicit permission from their respective owners.