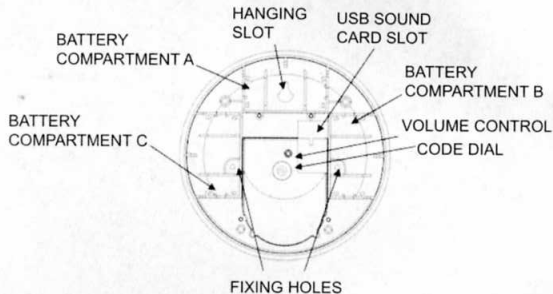


Supports Windows 2000 and XP



Safety

Before proceeding with the installation, please note the following safety warnings:

- Always follow the manufacturer's advice when using power tools and wear suitable protective equipment (e.g. safety goggles) when drilling holes, etc.
- Before drilling holes in walls, check for hidden electricity cables and water pipes. The use of a cable/pipe locator is advisable if in doubt.

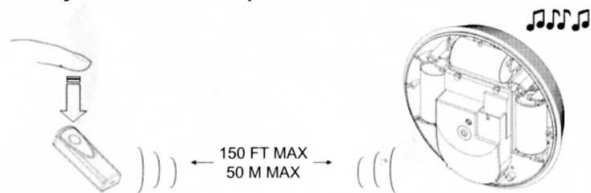
1. Install batteries. Push batteries (2 x AAA) not included. Chime batteries 3x C cell, not included.



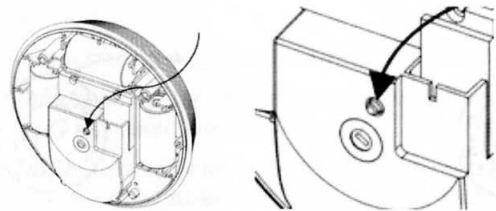
2. Choose a code between 1 & 16. Apply the same code for push and chime.



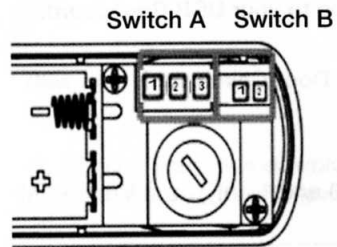
3. Test your Chime and push.



4. Volume Control—Push button.

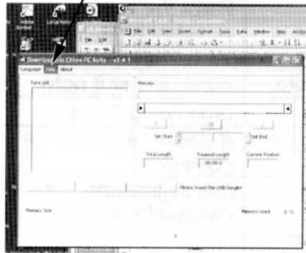


5. Selecting your standard tune.



Switch A Position	Switch B at Position 2	Switch B at Position 1
3	Plays list of pre-recorded songs one after the other.	Plays the same selected tune.
2	Westminster 8 note	Westminster 8 note
1	Ding Dong Dong	Ding Dong Dong
To change your tune	Switch B to position 2 Play through your list of tunes by pressing the push until desired tune is reached, then...	Switch B to position 1 this selects the desired tune.

6. How to download tunes to your USB Soundcard:
 Insert the CD and USB sound card into your computer. Click on the Help dropdown for instructions on how to download tunes to your USB Soundcard.



The sound properties of this Door Chime work best with acoustic music clips.

You can download:

MP3 sound files, Midi (type 0 and 1 only), and Wav (PCM only)

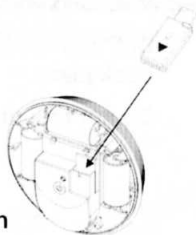
Soundcard Size: 4 MB Memory.

There are many types of Wav files available on the Web. The most basic is Wav PCM.

If you have a Wav that does not work in the Chimes editing program it may be a non PCM Wav file.

More advice can be found at: <http://yourhome.honeywell.com>

7. Fit your uploaded USB Card into your Chime.



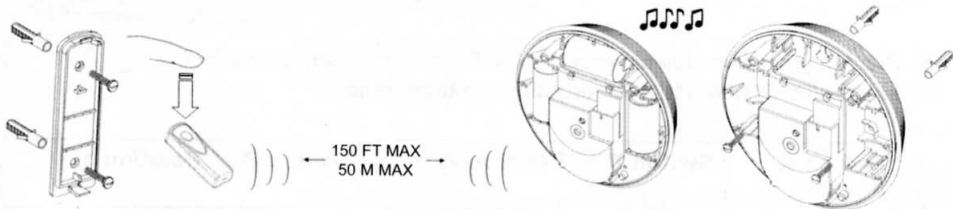
8. Playing your own downloaded tunes: Follow the instructions in sections 6-7, then follow instructions in table below.

Switch A Position	Switch B at Position 2	Switch B at Position 1
3	Plays list of pre-recorded songs one after the other.	Plays the same selected tune.
2	Westminster 8 note	Westminster 8 note
1	Ding Dong Dong	Ding Dong Dong

9. Mounting your Chime and Push

Drill two 1/4-in. (5 mm) fixing holes for mounting the push back plate.

Do not mount on or next to a metal surface.



Dense walls and metal can reduce range, before final installation adjust distance and position between push and chime while operating the push to optimize the chime within your environment.

Wall Type	Range Reduction
Dry-lined partition wall	10–30%
Single-layer brick wall	20–40%
Double-layer brick wall	30–70%
Metal panel/radiator	90–100%

Troubleshooting

"My Chime does not work..."

Make sure the batteries are fitted correctly + / - polarity.

Replace batteries every 12-18 months. Only use alkaline batteries.

Make sure push and Chime are within range, see section 9.

Check that the dial code on the bell push and chime are set at the same position. See section 2.

Chime does not play tune selected:

Ensure you have selected the right options – see section 5-6.

Support website link: <http://yourhome.honeywell.com> - with automatic updates.

Disposal and Recycling

At the end of their useful life the packaging and product should be disposed of via a suitable Recycling Center. Do not dispose of as normal household waste. DO NOT BURN.

Check with your local authority or retailer for recycling advice.



Declaration

Honeywell hereby declares that this product complies with Part 15 of the FCC rules and Industrial Canada standards. This device operation is subject to the following two conditions:

- (1) This device may not cause harmful interference, and
- (2) This device must accept any interference received, including interference that may cause undesired operation.



Caution:

Changes or modification not expressly approved by the party responsible for regulatory compliance could void the user's authority to operate the equipment.

Guarantee

Honeywell guarantees this product for 1 year from the date of purchase. Proof of purchase is required: this does not affect your statutory rights. If you require further information about your product call the Honeywell help line at 1-800-468-1502.