



QUICK START GUIDE

Motion Sensor

M08-0235-002 07/12

INTRODUCTION

Congratulations on your purchase of the ONELINK Wireless Motion Sensor (WMS). Your sensor uses a motion detector to scan a field 90 degrees wide up to a range of approximately 20 feet (6 m). This Quick Start Guide describes how to set up and troubleshoot your Wireless Motion Sensor. For a full system set-up manual, please visit our website: www.onelinkhome.com

USING YOUR MOTION SENSOR

The WMS can report detected events when motion is detected. Positioning is critical in the mounting of your WMS. Using your computer and the Wireless System Gateway, you locally manage your home environment from your PC. When configured, the system can notify you of any new events by sending you an email. An event is defined as movement in the field covered by the motion sensor.

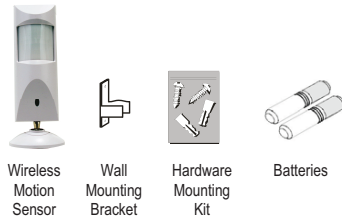
How It Works

The Wireless Motion Sensor can communicate with the Wireless System Gateway to a distance of up to approximately 65 feet (20 m) in a typical home. It can detect motion within a field of 90 degrees horizontally. If armed, motion triggers an event that is communicated wirelessly back to the Wireless System Gateway, which in turn sends event information back to your PC.



INSTALLATION OVERVIEW

Your package contains the following:



Installing your sensor is a simple process.

1. Insert batteries by matching the polarity shown on the battery wells. Replace battery door and mounting bracket.
2. Mount the sensor.

Installation Hints

Please consider the following points when mounting the sensor:

- The sensor must be aimed so that it does not directly face the sun or any bright light to avoid causing damage to the sensor.
- This device's communication range is up to 65 feet from the Wireless System Gateway in a typical home, depending on the number of obstacles. These can include metal framing, thick walls, and other wireless devices operating at 915 MHz. It is recommended that different positions be tried for optimal results.

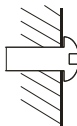
Installing Your Wireless Motion Sensor

Your sensor can either be mounted on a wall or just sit on a horizontal surface.

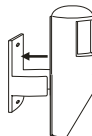
Wall Mount Your Wireless Motion Sensor

Warning: When mounting near a window, drilling too close to the glass could break the glass and possibly cause it to shatter and cause injury. The window extends deeper into the frame than can be seen; therefore, ensure your screw is beyond the glass before drilling.

1. Using the holes on the drilling template found later in this guide, mark the position of the holes to be drilled.
For drywall or other composite surfaces, use a 7/32" drill bit. Drill a hole for each of the mounting screws and insert a plastic wall anchor into each hole.
For solid surfaces, use a 1/16" drill bit. Drill a pilot hole for each of the mounting screws.



2. Ensure that fresh batteries have been installed.
3. Position the sensor to survey the desired area. Please keep in mind that the field of view is 90 degrees and motion sensor distance works up to 20 feet.
4. Using the screws provided, secure the mounting bracket to the wall. Be sure to mount the sensor in the manner pictured so that the unit has free motion for optimum aiming.



Tabletop Mount Your Wireless Motion Sensor

The sensor can be placed on any horizontal surface.

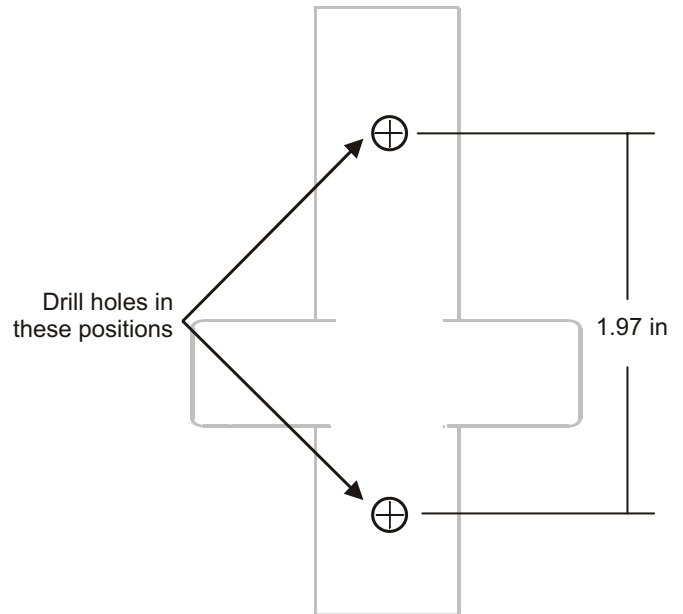
1. Locate the sensor on a horizontal surface.
2. Ensure that fresh batteries have been installed.
3. Screw on the tablemount base.
4. Make adjustments to the sensor coverage angle by tilting and panning the unit with your hand.



Wall Mount Drilling Template

Mounting tools: Screwdriver, electric drill or awl. On hard surfaces, it is recommended that you pre-drill 1/2-inch deep pilot holes with a drill bit slightly smaller than the bracket mounting screws before securing the bracket to the surface. When mounting a sensor on soft surfaces like sheetrock, use an awl to punch holes in the material slightly smaller than the plastic anchors included in the hardware mounting kit.

The illustration is drawn to a one-to-one scale, which means that it provides the exact dimensions required to mount the unit.



Features and Specifications

- Wireless connectivity to the System Gateway
- LED in sensor illuminates when activity occurs
- 90 degree field of view for motion
- All hardware for either wall or tabletop mounting included
- Two AA alkaline battery operation (included)

View: 90° field of view

Surveillance range: Up to 20 feet

Communication frequency: 915 MHz

Typical open air range (line of sight): 200 ft (60 m)

Typical indoor range: 65 feet (20 m)

Overall size: 2.125" x 1.691" x 6.093"

TROUBLESHOOTING

Problem

Sensor will not register with the Wireless System Gateway

Solution

- Ensure that the sensor has fresh batteries.
- Ensure that the Wireless System Gateway is powered and online.
- Reposition the sensor closer to the Wireless System Gateway.

Problem

Motion events are not triggered

Solution

- Ensure that the sensor is not positioned behind glass. The motion sensor is triggered by changes in heat. Any material, such as glass, that "insulates" keeps the camera from detecting heat changes (movement).

Problem

Motion is triggered but signal is not received by the Wireless System Gateway

Solution

- Ensure that the sensor is positioned properly, avoiding obstacles that can interfere.

FAQ

How far away can the sensor see?

The motion sensor is capable of detecting objects up to 20 feet away with a field of view of 90 degrees.

REGULATORY INFORMATION

FCC Notices:

NOTE: This equipment has been tested and found to comply with the limits for a Class B digital device, pursuant to Part 15 of the FCC Rules. These limits are designed to provide reasonable protection against harmful interference in a residential installation. This equipment generates, uses and can radiate radio frequency energy and, if not installed and used in accordance with the instructions, may cause harmful interference to radio communications.

However, there is no guarantee that interference will not occur in a particular installation. If this equipment does cause harmful interference to radio or television reception, which can be determined by turning the equipment off and on, the user is encouraged to try to correct the interference by one or more of the following measures:

- Reorient or relocate the receiving antenna.
- Increase the separation between the equipment and receiver.
- Connect the equipment into an outlet on a circuit different from that to which the receiver is connected.
- Consult the dealer or an experienced radio/TV technician for help.

Warning: Changes or modifications to this unit not expressly approved by the party responsible for compliance could void the user's authority to operate the equipment.

This device complies with Part 15 of the FCC Rules. Operation is subject to the following two conditions: (1) this device may not cause harmful interference, and (2) this device must accept any interference received, including interference that may cause undesired operation.

Model: OLMOTION

ICES-003 Statement

This Class B digital apparatus complies with Canadian ICES-003.

This device complies with Industry Canada licence-exempt RSS standard(s). Operation is subject to the following two conditions: (1) this device may not cause interference, and (2) this device must accept any interference, including interference that may cause undesired operation of the device.

Cet appareil numérique de la classe B est conforme à la norme NMB-003 du Canada.

Le présent appareil est conforme aux CNR d'Industrie Canada applicables aux appareils radio exempts de licence. L'exploitation est autorisée aux deux conditions suivantes: (1) l'appareil ne doit pas produire de brouillage, et (2) l'utilisateur de l'appareil doit accepter tout brouillage radioélectrique subi, même si le brouillage est susceptible d'en compromettre le fonctionnement.

Model: OLMOTIONA

Battery Regulations:

▲WARNING!

- Always use the exact batteries specified by this User's Manual. **DO NOT use rechargeable batteries. For products requiring multiple batteries, replace all batteries of a set at the same time. Do Not Mix Old and New Batteries. Clean the battery contacts and also those of the device prior to battery installation. Install batteries correctly with regard to polarity (+ and -).**

▲WARNING!

- Keep battery out of reach of children. In the event a battery is swallowed, immediately contact your poison control center, your physician, or the National Battery Ingestion hotline at 202-625-3333 as serious injury may occur. Please dispose of or recycle used batteries properly, following any local regulations. Consult your local waste management authority or recycling organization to find an electronics recycling facility in your area. **DO NOT DISPOSE OF BATTERIES IN FIRE. BATTERIES MAY EXPLODE OR LEAK.**

LIMITED WARRANTY

ONELINK Wireless Motion Sensor

BRK Brands, Inc., ("BRK") the maker of First Alert® brand products warrants that for a period of one year from the date of purchase, this product will be free from defects in material and workmanship. BRK, at its option, will repair or replace this product or any component of the product found to be defective during the warranty period. Replacement will be made with a new or remanufactured product or component. If the product is no longer available, replacement may be made with a similar product of equal or greater value. This is your exclusive warranty.

This warranty is valid for the original retail purchaser from the date of initial retail purchase and is not transferable. Keep the original sales receipt. Proof of purchase is required to obtain warranty performance. BRK dealers, service centers, or retail stores selling BRK products do not have the right to alter, modify or any way change the terms and conditions of this warranty.

This warranty does not cover normal wear of parts or damage resulting from any of the following: negligent use or misuse of the product, use on improper voltage or current, use contrary to the operating instructions, disassembly, repair or alteration by anyone other than BRK or an authorized service center. Further, the warranty does not cover Acts of God, such as fire, flood, hurricanes and tornadoes or any batteries that are included with this unit.

BRK shall not be liable for any incidental or consequential damages caused by the breach of any express or implied warranty. Except to the extent prohibited by applicable law, any implied warranty of merchantability or fitness for a particular purpose is limited in duration to the duration of the above warranty. Some states, provinces or jurisdictions do not allow the exclusion or limitation of incidental or consequential damages or limitations on how long an implied warranty lasts, so the above limitations or exclusion may not apply to you. This warranty gives you specific legal rights, and you may also have other rights that vary from state to state or province to province.

How to Obtain Warranty Service

For customer service, technical support, and warranty claims, contact our Customer Support Center at 1-800-323-9005 Monday - Friday 7:30 am to 5:00 pm Central Standard Time.

Battery Life

For your ONELINK wireless devices that require batteries, use high-quality, non-corrosive batteries designed for use in electronic equipment. Battery life is up to one year with normal usage. **Do not use rechargeable batteries in any ONELINK device.**

Registration

Register your product at:
www.onelinkhome.com

© 2012 BRK Brands, Inc. All rights reserved.
Distributed by BRK Brands, Inc.
3901 Liberty Street Road, Aurora, IL 60504-8122

ONELINK® is a registered trademark of BRK Brands, Inc.
First Alert® is a registered trademark of the First Alert Trust used under license.