

Installation and Operation Guide

Portable Wireless Doorbell



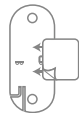
RDWL311A2000

Preparation

In the box you will find



Push
Button

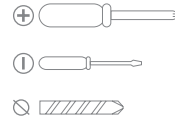


Push Button Mounting
Bracket
and Adhesive Pad



Flat Head
Screws

To install you will need



Phillips Screwdriver
Standard Screwdriver
Drill and 1/4 in. (6 mm) drill bit



4 AA alkaline batteries

The push button supplied with this kit is pre-programmed to operate with the doorbell. If it is not, see "Connect a Push Button" on page 4.

Overview

Just follow these simple steps:

1. Install batteries.
2. Set up the doorbell and your preferences.
3. Install the doorbell and the push button.

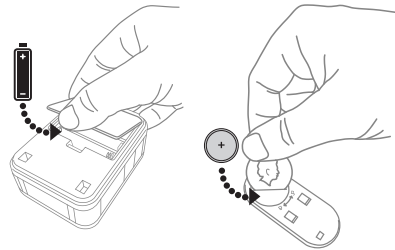
Safety

Before proceeding with the installation, please note the following safety warnings:

- Always follow the manufacturer's advice when using power tools and wear suitable protective equipment (e.g. safety goggles) when drilling holes, etc.
- Before drilling holes in walls, check for hidden electricity cables and water pipes. The use of a cable/pipe locator is advisable if in doubt.

Install Batteries

1. Open the battery cover and install 4 AA alkaline batteries.
2. Open the battery cover and install the CR2032 battery.



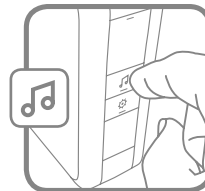
Setup and Operation

Press the push button to test whether it is paired with the doorbell. The doorbell will ring. If it does not, see "Connect a Push Button" on page 4.

Change the Tune

Press the Music button to change the doorbell tune.

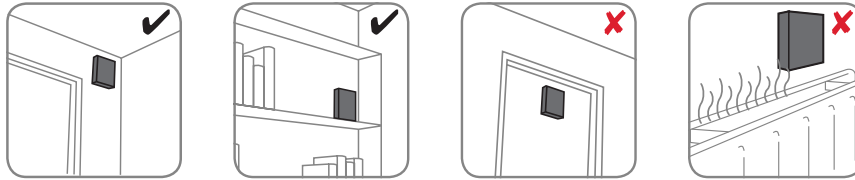
Every time you press the Music button, the tune will change. Stop pressing the Music button when you hear the tune you want:



Ding Dong
Westminster
Soft Alert
Smart Sax

Installation

Choose a location that is not near a heat source or on something that moves (like a door). For non-mounting locations, choose a place where the doorbell will be easy to hear.



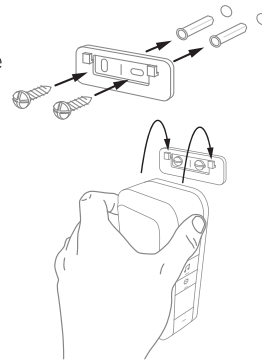
Install Doorbell

If you are not mounting the doorbell to the wall, place it where you want it.

1. Screw the doorbell wall mounting bracket to the wall using the included screws and anchors (if necessary).

Drill 1/4 inch holes for the anchors.

2. Hang the doorbell on the mounting bracket.



Install Push Button

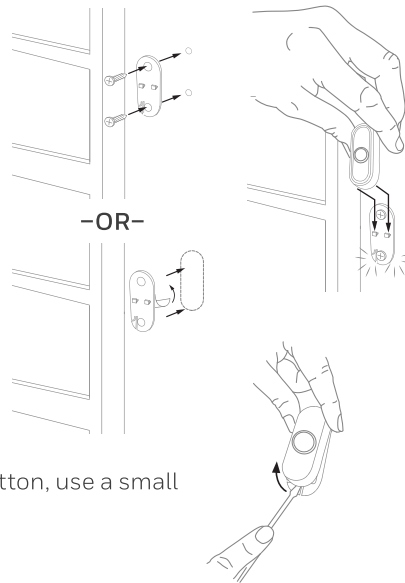
1. Mount the push button bracket in the desired location.

Use the screws

-OR-

Use the adhesive backing. If using the adhesive backing, clean the surface first.

2. Snap the push button onto the mounting bracket.

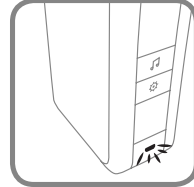


Note: If you need to remove the push button, use a small screwdriver to release the tab.

Accessories

You can connect 2 accessories to your doorbell, including other push buttons, window or door opening sensors, and motion sensors.

If you try to connect more accessories than the max number, the LED on the side blinks red.

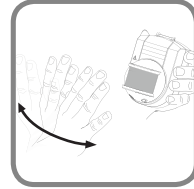
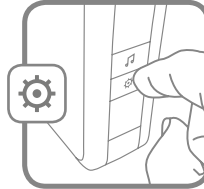


Connect a Motion Sensor

1. Press and hold the Setting button on the doorbell for three seconds.

The LED on the side turns on with an amber color.

2. Within 20 seconds of pressing the Setting button, wave or make some other kind of motion in front of the motion sensor.



Connect a Push Button

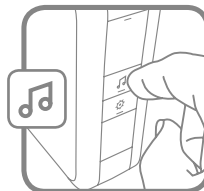
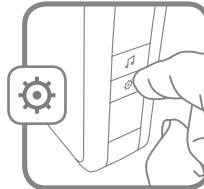
Follow these steps to change the ring for an existing doorbell, too.

1. Press and hold the Setting button on the doorbell for three seconds.

The LED on the side turns on with an amber color.

2. Press the push button.

3. Within 12 seconds of pressing the push button, press the Music button to select the ring for that push button.





Secret Knock

You can set up a Secret Knock that makes a different ring for each push button. The Secret Knock is triggered by pressing the push button quickly 3 times.

1. Press the push button 3 times quickly.
2. Within 12 seconds of pressing the push button, press the Music button to select the ring for the Secret Knock.

Maintenance

Your doorbell and push button require no maintenance except to periodically change the batteries.

If using the correct batteries, battery life should be approximately:

- Up to 2 years for the doorbell; replace with **4 AA alkaline** batteries
- Up to 2 years for the push button; replace with a **CR2032 lithium** battery

Low Battery Notification



When the doorbell batteries are low, the LED on the side turns on.



When the push button batteries are low, two beep sounds are heard after the normal tune.

Reset

This process removes all pairings, including the push button that came with this doorbell:

1. Remove the doorbell battery.
2. Press and hold the Setting button, and replace the battery at the same time.
3. The doorbell will beep several times rapidly, and is returned to its factory default settings.

Specifications

	Doorbell	Push Button
Operating Temperature	23°F to 104°F (-5°C to 40°C)	-4°F to 122°F (-20°C to 50°C)
Honeywell ActivLink™	916.8 MHz	916.8 MHz
Range (open field)	250 ft. (76 m)	250 ft. (76 m)
Sound Level (typical)	80dBA	-
RF Power	-	<1.2W
Battery Type	AA cell alkaline (x 4)	CR2032
Battery Life (5 activations/day)	Up to 2 years	Up to 2 years
Rain proof	N/A	Pass UL1598 rain test.

Troubleshooting

If	Then
The doorbell does not work	<ol style="list-style-type: none"> 1. Make sure the correct batteries (4 AA alkaline cells, 1 CR2032) are installed with the correct polarity. 2. The doorbell might be out of range; try the doorbell in a different location. 3. Reconnect the doorbell. See "Connect a Push Button".
Two 'beep' sounds are heard after the normal tune	Replace push button battery with a new CR2032.
The LED on the side turns on	Replace doorbell batteries with 4 new AA alkaline batteries.
Range is reduced	<ol style="list-style-type: none"> 1. Metal structures including uPVC door frames can reduce the range. Don't mount the the doorbell or push button on or near metal structures. 2. Move the doorbell closer to the push button. 3. Weak batteries will reduce range. In cold conditions (below 41°F [5°C]), batteries may need to be replaced more often.

For help please visit yourhome.honeywell.com or call 1-800-468-1502.

FCC Regulations

This device complies with part 15 of the FCC Rules. Operation is subject to the following two conditions: (1) This device may not cause harmful interference, and (2) this device must accept any interference received, including interference that may cause undesired operation.

The grantee is not responsible for any changes or modifications not expressly approved by the party responsible for compliance. Such modifications could void the user's authority to operate the equipment.

This equipment has been tested and found to comply with the limits for a Class B digital device, pursuant to part 15 of the FCC Rules. These limits are designed to provide reasonable protection against harmful interference in a residential installation. This equipment generates, uses and can radiate radio frequency energy and, if not installed and used in accordance with the instructions, may cause harmful interference to radio communications. However, there is no guarantee that interference will not occur in a particular installation. If this equipment does cause harmful interference to radio or television reception, which can be determined by turning the equipment off and on, the user is encouraged to try to correct the interference by one or more of the following measures:

- Reorient or relocate the receiving antenna.
- Increase the separation between the equipment and receiver.
- Connect the equipment into an outlet on a circuit different from that to which the receiver is connected.
- Consult the dealer or an experienced radio/TV technician for help.

This transmitter must not be co-located or operating in conjunction with any other antenna or transmitter. This equipment should be installed and operated with a minimum distance of 20 millimeters between the radiator and your body.

FCC ID: HS9-RDWL311A, HS9-RPWL400

IC Regulations

CAN ICES-3(B)/ NMB-3(B)

This device complies with Industry Canada licence-exempt RSS standard(s). Operation is subject to the following two conditions: (1) this device may not cause interference, and (2) this device must accept any interference, including interference that may cause undesired operation of the device.

CAN ICES-3(B)/NMB-3(B)

The device meets the exemption from the routine evaluation limits in section 2.5 of RSS 102 and compliance with RSS-102 RF exposure, users can obtain Canadian information on RF exposure and compliance.

This transmitter must not be co-located or operating in conjunction with any other antenna or transmitter. This equipment should be installed and operated with a minimum distance of 20 millimeters between the radiator and your body.

IC ID: 573R-RDWL311A, 573R-RPWL400

Warranty

1-year limited warranty

Honeywell warrants this product, excluding battery, to be free from defects in workmanship or materials, under normal use and service, for a period of one (1) year from the date of first purchase by the original purchaser. If at any time during the warranty period the product is determined to be defective due to workmanship or materials, Honeywell shall repair or replace it (at Honeywell's option).

If the product is defective,

(i) return it, with a bill of sale or other dated proof of purchase, to the place from which you purchased it; or
(ii) call Honeywell Customer Care at 1-800-468-1502. Customer Care will make the determination whether the product should be returned to the following address:

Honeywell Return Goods, Dock 4 MN10-3860, 1885 Douglas Dr. N., Golden Valley, MN 55422, or whether a replacement product can be sent to you.

This warranty does not cover removal or reinstallation costs. This warranty shall not apply if it is shown by Honeywell that the defect was caused by damage which occurred while the product was in the possession of a consumer.

Honeywell's sole responsibility shall be to repair or replace the product within the terms stated above. HONEYWELL SHALL NOT BE LIABLE FOR ANY LOSS OR DAMAGE OF ANY KIND, INCLUDING ANY INCIDENTAL OR CONSEQUENTIAL DAMAGES RESULTING, DIRECTLY OR INDIRECTLY, FROM ANY BREACH OF ANY WARRANTY, EXPRESS OR IMPLIED, OR ANY OTHER FAILURE OF THIS PRODUCT. Some states do not allow the exclusion or limitation of incidental or consequential damages, so this limitation may not apply to you.

THIS WARRANTY IS THE ONLY EXPRESS WARRANTY HONEYWELL MAKES ON THIS PRODUCT. THE DURATION OF ANY IMPLIED WARRANTIES, INCLUDING THE WARRANTIES OF MERCHANTABILITY AND FITNESS FOR A PARTICULAR PURPOSE, IS HEREBY LIMITED TO THE ONE YEAR DURATION OF THIS WARRANTY. Some states do not allow limitations on how long an implied warranty lasts, so the above limitation may not apply to you.

This warranty gives you specific legal rights, and you may have other rights which vary from state to state.

If you have any questions concerning this warranty, please write Honeywell Customer Care, 1985 Douglas Dr, Golden Valley, MN 55422 or call 1-800-468-1502.

Automation and Control Solutions

Honeywell International Inc.
1985 Douglas Drive North
Golden Valley, MN 55422
yourhome.honeywell.com

Honeywell

® U.S. Registered Trademark.
© 2016 Honeywell International Inc.
33-00185EFS-02 M.S. 04-16
Printed in China



33-00185EFS-02

Guide d'installation et d'utilisation

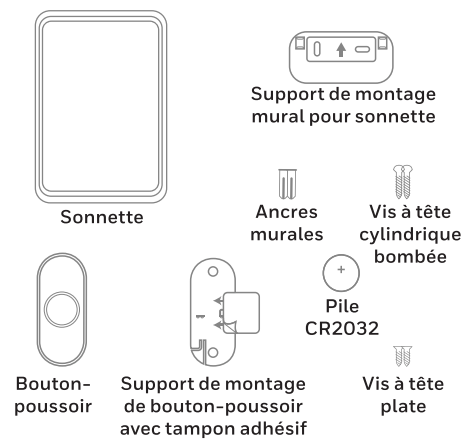
Sonnette sans fil portable



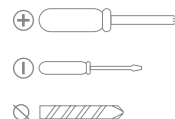
RDWL311A2000

Préparation

Vous trouverez dans la boîte



Matériel requis pour l'installation



Tournevis cruciforme
Tournevis normal
Perceuse et foret de 6 mm (1/4 po)



4 piles alcalines AA

Le bouton-poussoir fourni avec ce nécessaire est préprogrammé pour fonctionner avec la sonnette. Si ce n'est pas le cas, consultez la section « Connexion d'un bouton-poussoir » à la page 12.

Aperçu

Suivez simplement ces quelques étapes simples :

1. Installez les piles.
2. Configurez la sonnette et vos préférences.
3. Installez la sonnette et le bouton-poussoir.

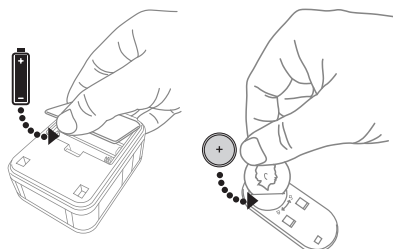
Sécurité

Avant de procéder à l'installation, veuillez prendre connaissance des mises en garde suivantes :

- Toujours suivre les conseils du fabricant lors de l'utilisation d'outils électriques et porter un équipement de protection approprié (i.e. lunettes de sécurité) en perçant des trous, etc.
- Avant de percer des trous dans les murs, vérifier la présence de câbles électriques ou de conduites d'eau cachés. L'utilisation d'un localisateur de conduites/de câbles est recommandée en cas de doute.

Installation des piles

1. Ouvrez le couvercle des piles et installez quatre piles alcalines AA.
2. Ouvrez le couvercle de la pile et installez la pile CR2032.



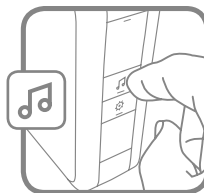
Configuration et fonctionnement

Appuyez sur le bouton-poussoir pour déterminer qu'il est jumelé avec la sonnette. La sonnette sonne. Si ce n'est pas le cas, consultez la section « Connexion d'un bouton-poussoir » à page 12.

Modification de la mélodie

Appuyez sur le bouton Musique pour modifier la mélodie de la sonnette.

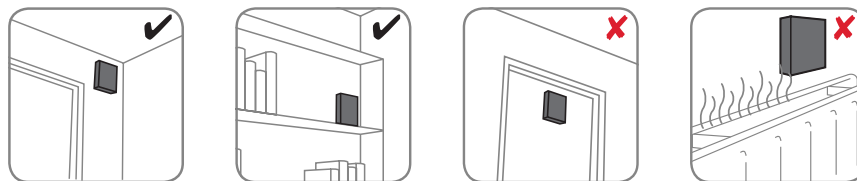
À chaque fois que vous appuyez sur le bouton Musique, la mélodie change. Arrêtez d'appuyer sur le bouton Musique lorsque vous entendez la mélodie souhaitée :



Ding Dong
Westminster
Alerte douce
Smart Sax

Installation

Choisissez un emplacement éloigné de toute source de chaleur ou d'un objet qui bouge (comme une porte). Si la sonnette n'est pas montée, choisissez un endroit où elle sera facile à entendre.



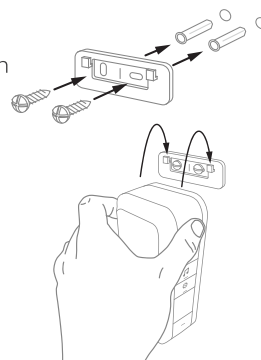
Installation de la sonnette

Si la sonnette n'est pas montée au mur, placez-la à un endroit désiré.

1. Vissez le support de montage pour sonnette au mur en utilisant les vis et les ancres incluses (si nécessaire).

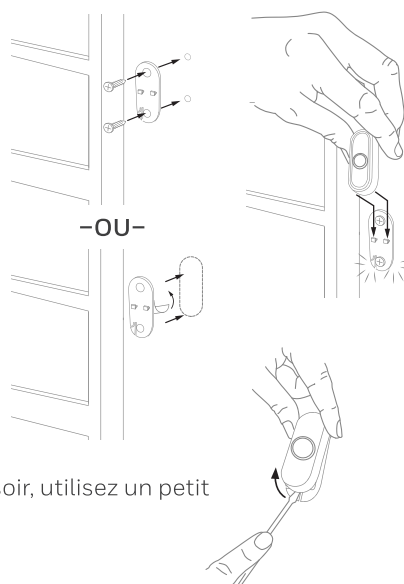
Percez des trous de 1/4 po pour les ancres.

2. Accrochez la sonnette au support de montage.



Installation du bouton-poussoir

1. Montez le support du bouton-poussoir à l'emplacement souhaité. Utilisez les vis -OU- utilisez le support adhésif. Si vous utilisez le support adhésif, nettoyez d'abord la surface.
2. Enclenchez le bouton-poussoir sur le support de montage.

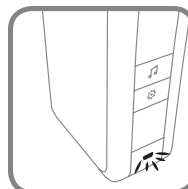


Remarque : Pour retirer le bouton-poussoir, utilisez un petit tournevis pour libérer la languette.

Accessoires

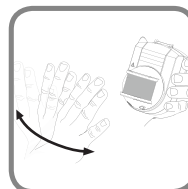
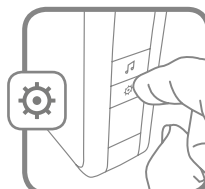
Vous pouvez connecter 2 accessoires à votre sonnette, y compris d'autres boutons poussoirs, des capteurs d'ouverture de porte ou de fenêtre et des détecteurs de mouvement.

Si vous essayez de connecter plus que le nombre maximum d'accessoires, le voyant DEL latéral clignote en rouge.



Connexion d'un capteur de mouvement

1. Appuyez sans relâcher le bouton de réglage de la sonnette pendant trois secondes. Le voyant DEL latéral s'allume en orange ambré.
2. Dans les 20 secondes après avoir appuyé sur le bouton de réglage, agitez la main ou faites un autre mouvement devant le détecteur de mouvement.



Connexion d'un bouton-poussoir

Suivez ces étapes pour modifier la mélodie d'une sonnette existante.

1. Appuyez sans relâcher le bouton de réglage de la sonnette pendant trois secondes. Le voyant DEL latéral s'allume en orange ambré.
2. Appuyez sur le bouton-poussoir.
3. Dans les 12 secondes après avoir appuyé sur le bouton-poussoir, appuyez sur le bouton Musique pour sélectionner la mélodie du bouton-poussoir.

