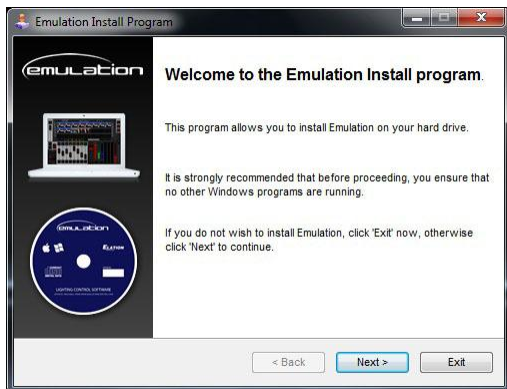
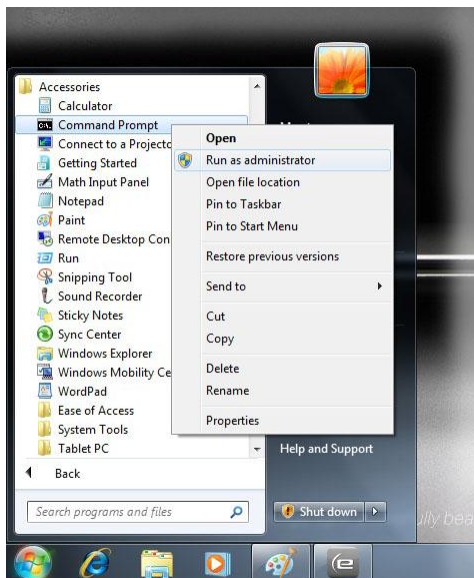


Installing Emulation on Windows 64-bit

1. Make sure the CueCable DMX interface is unplugged
2. Install Emulation version 1.01 build 14 or higher



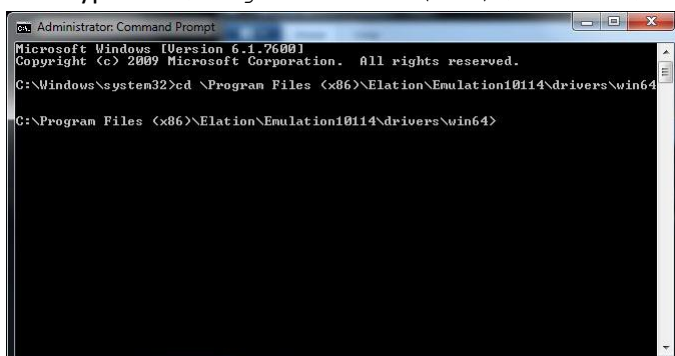
3. Open a Command Prompt, run as administrator



4. Go to the installation folder of Emulation.

If your folder is C:\Program Files (x86)\Elation\Emulation10114\drivers\win64

Then type `cd \Program Files (x86)\Elation\Emulation10114\drivers\win64`



5. Run the install batch file by typing `install.bat`

```
Administrator: Command Prompt
Microsoft Windows [Version 6.1.7600]
Copyright (c) 2009 Microsoft Corporation. All rights reserved.

C:\Windows\system32>cd \Program Files (x86)\Elation\Emulation10114\drivers\win64

C:\Program Files (x86)\Elation\Emulation10114\drivers\win64>install.bat
C:\Program Files (x86)\Elation\Emulation10114\drivers\win64>wdreg -inf windrvr6.
inf install
WDREG utility v10.10. Build Sep 2 2009 09:43:37

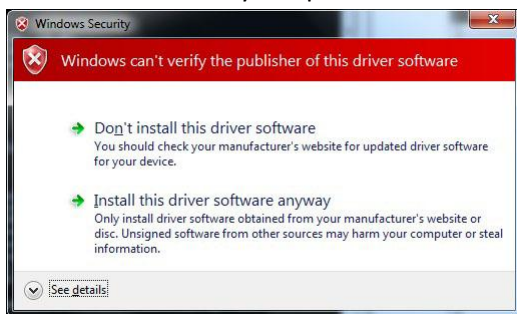
Processing HUID *WINDRV6
Installing a signed driver package for *WINDRV6
LOG ok: 1. ENTER: DriverPackageInstall
LOG ok: 1. ENTER: DriverPackageInstall
LOG ok: 1. Looking for Model Section (DeviceList.NTamd64)...
LOG ok: 1. Installing INF file 'C:\Program Files (x86)\Elation\Emulation10114\dr
ivers\win64\windrvr6.inf' (Plug and Play).
LOG ok: 1. Looking for Model Section (DeviceList.NTamd64)...
LOG ok: 1. Installing devices with id "WINDRV6" using INF "C:\Windows\System32
\DriverStore\FileRepository\windrvr6.inf_amd64_neutral_5afceb8b67ea4d9\windrvr6
.inf".
LOG ok: 1. ENTER: UpdateDriverForPlugAndPlayDevices...
LOG ok: 0. RETURN: UpdateDriverForPlugAndPlayDevices...
LOG ok: 1. Installation was successful.
LOG ok: 0. Install completed
LOG ok: 1. RETURN: DriverPackageInstall (0x0)
LOG ok: 1. RETURN: DriverPackageInstall (0x0)
diffx_install preinstall_inf: err 0, last event 0, last error 0. SUCCESS
install: completed successfully

C:\Program Files (x86)\Elation\Emulation10114\drivers\win64>
```

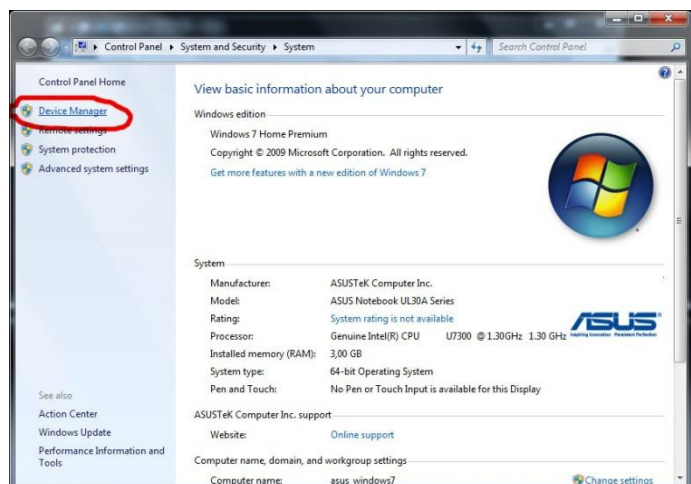
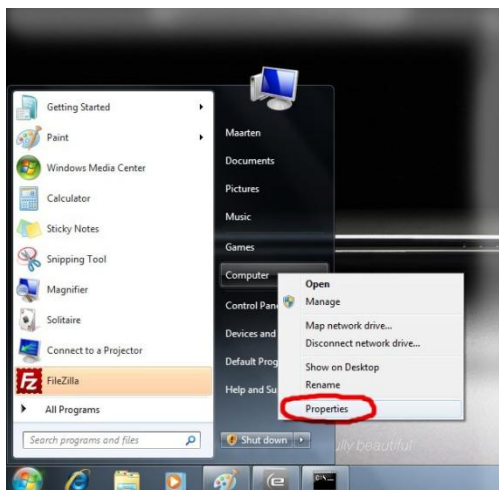
You can trust 'Jungo'; this is the name of the supplier of the driver.



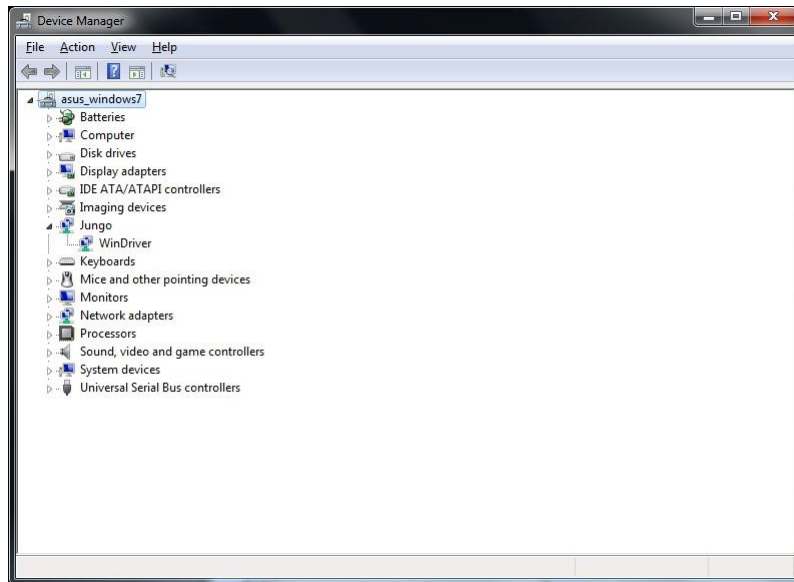
Windows can't verify the publisher of the CueCable; Click 'Install this driver software anyway'



6. Check your Device Manager. You can reach the Device Manager through:

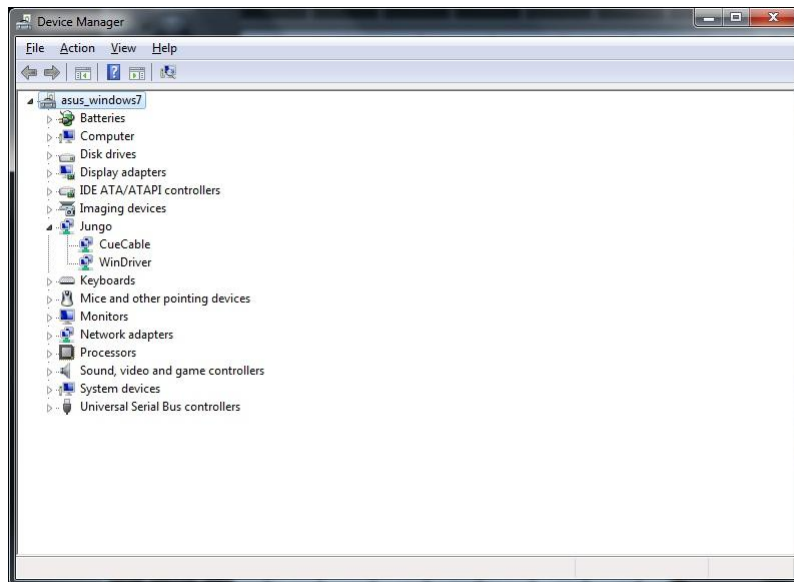


It should display class 'Jungo' containing item 'Windriver6'.



7. Plug in the CueCable DMX Interface

8. Check your Device Manager. In the class 'Jungo' it should now also show item 'CueCable'.



9. Run Emulation and check in the 'Options' -> 'Hardware' that the CueCable is detected.



Finished!