



ACR1252 Test Operating Procedure

1. Driver installation Procedure
2. Testing Environment Setup
3. Testing Procedure

Driver installation Procedure

Hardware requires:

- ❖ ACR1252
- ❖ PC with OS windows XP or above

Software requires:

- ❖ Driver "ACS_Unified_PCSC_Driver-4.0.0.0.rar"

Steps:

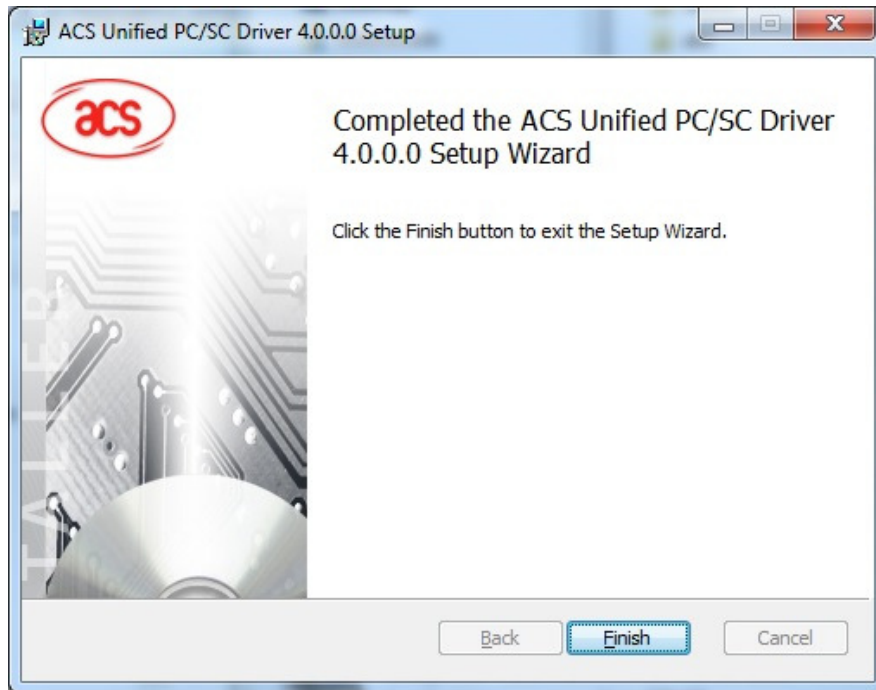
1. Extract the file "ACS_Unified_PCSC_Driver-4.0.0.0.rar"
2. Run "Setup.exe"



3. Click OK, then "Next>"



4. Click "Next>", and install finished:



5. Driver Installation Complete



Testing Environment Setup

Hardware requires:

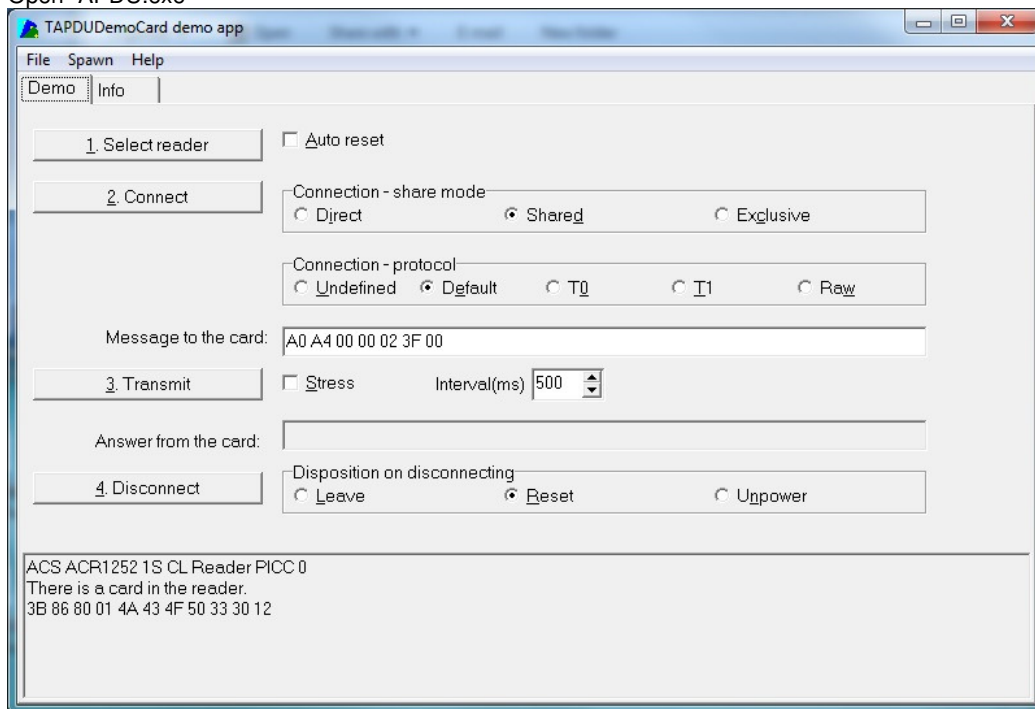
- ❖ ACR1252 x 1
- ❖ PC with OS windows XP or above
- ❖ Test card x 1 (provided by ACS)

Software requires:

- ❖ APDU.exe

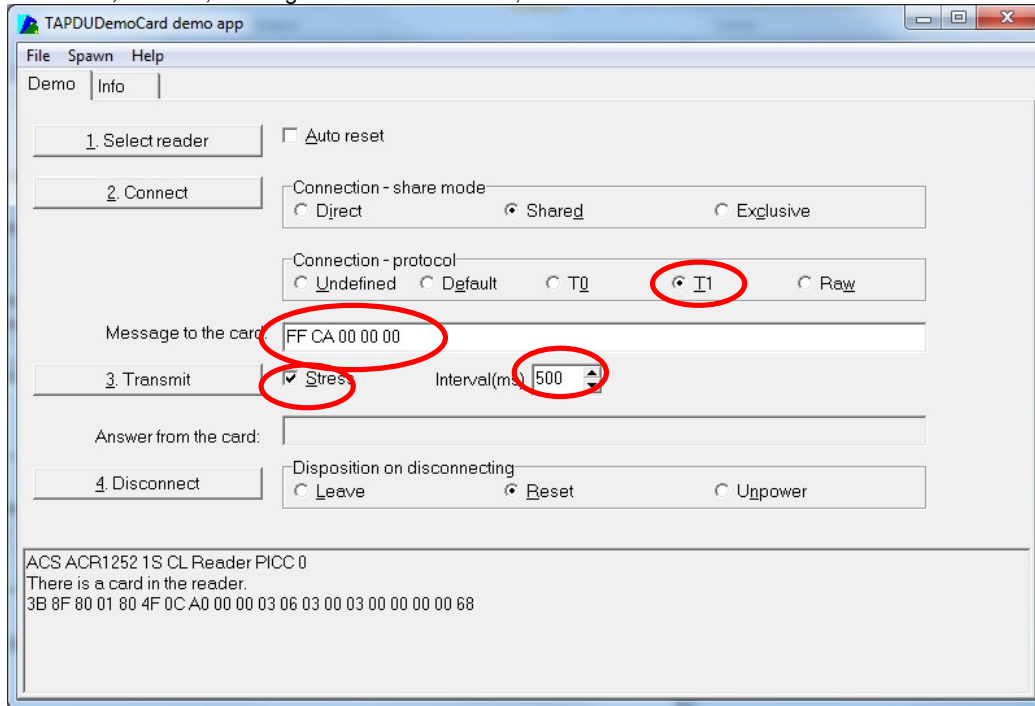
Steps:

1. Plug in the reader into the PC
2. Place the Test Card on the top of the reader about 1.5cm
Open "APDU.exe"





3. Select "T1", "Stress", Message = "FF CA 00 00 00", Interval = "500"



4. Press "Connect"
5. Complete the Testing Environment Setup

Testing Procedure

Hardware requires:

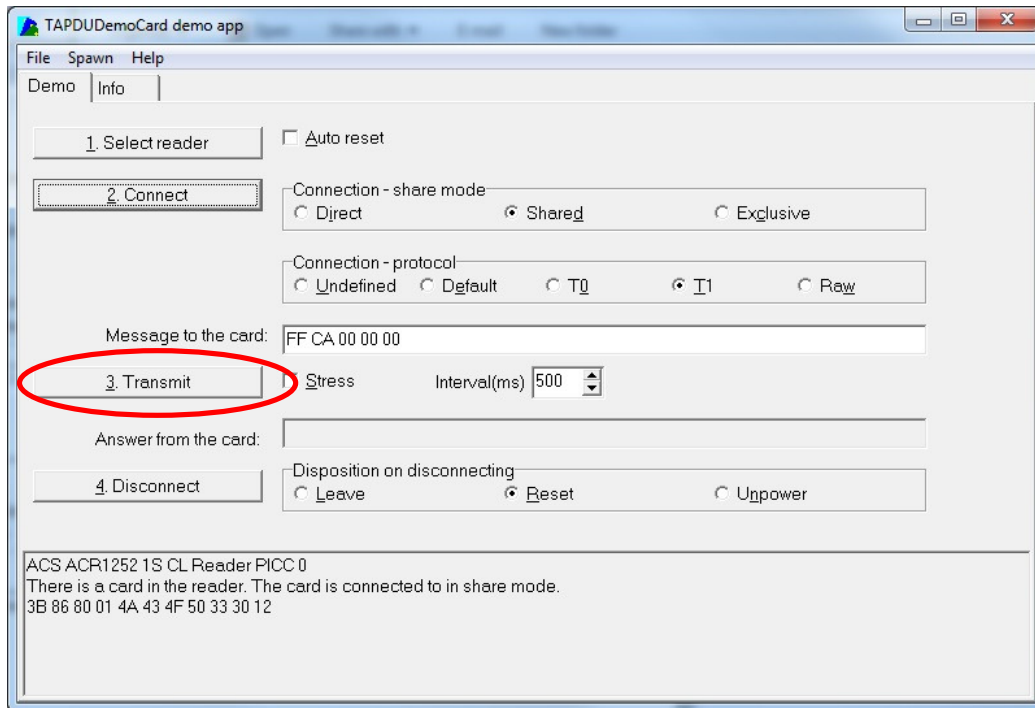
- ❖ ACR1252 x 1
- ❖ PC with OS windows XP or above
- ❖ Test card x 1

Software requires:

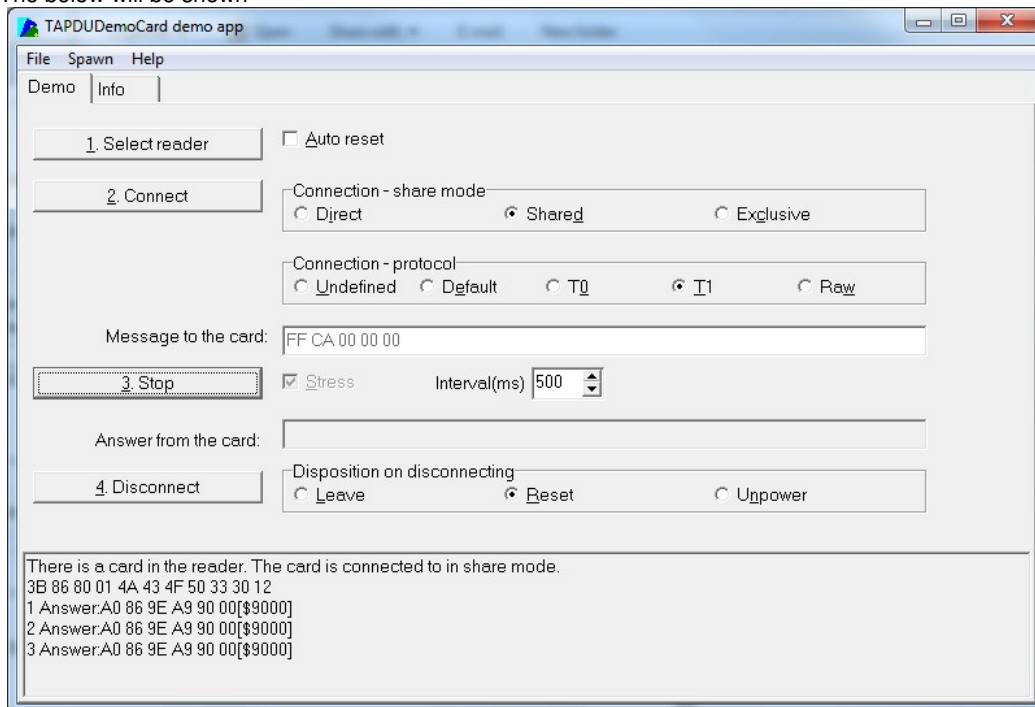
- ❖ APDU.exe

Steps:

1. Complete Testing Environment Setup procedure
2. Press "Transmit" to start the testing



3. The below will be shown



4. Can start to Lab Test



Appendix A. Parameter sheet

Device

ACR1252 Smart Card Reader

Power supply

Supply voltage..... Regulated 5V DC

Supply current..... <200mA (without smart card)

Universal Serial Bus Interface

Type USB, four lines: +5V, GND, D+ and D-

Connector supplied together with the reader

Speed..... Full Speed Device, 12 Mbps

Contact Smart Card Interface

Standard ISO 7816 1/2/3, T=0 and T=1

Supply current..... max. 50mA

Smart card voltage 5V / 3V

Smart card read / write speed 9600 – 307kbps

Short circuit protection +5V / GND on all pins

CLK frequency 3.6 MHz

Card connector..... SIM Connector

Comment [u1]: Modify arranging to actual value

Contactless Smart Card Interface

Standard..... ISO 14443 A & B Parts 1-4, ISO18092

Protocol ISO14443 T=CL for ISO14443-4 compliant cards and T=CL Emulation for MIFARE 1K/4K, ISO 18092 FeliCa and NFC tag

Smart card read / write speed..... 106 kbps, 212 kbps, 424 kbps

Operating Frequency for Contactless Cards Access

Operating Frequency 13.56 MHz

Antenna

Antenna Size 50mm x 40mm

Operating distance up to 50 mm (Depend on Card Type)

Built-in peripherals

Monotone buzzer

Bi-Color LED

Case

Dimensions 98 mm (L) x 65 mm (W) x 12.8 mm (H)

Color Black

Operating Conditions

Temperature.....-20 - 55°C

Humidity 10% - 80%

Cable Connector

Length 1.5m (USB)



Standard/Certifications

CE, FCC,VCCI, N-Mark

OS

Windows 2000, XP and up

Mac 10.5 and up

Linux

Android 3.1 and above OEM

OEM-Logo possible, customer-specific colors, casing, and card connector



Revision History

Date	By	Changes	Version
2013-12-20	Edmond Ho	• First Release	1.00

FCC Caution:

Any Changes or modifications not expressly approved by the party responsible for compliance could void the user's authority to operate the equipment.

This device complies with part 15 of the FCC Rules. Operation is subject to the following two conditions: (1) This device may not cause harmful interference, and (2) this device must accept any interference received, including interference that may cause undesired operation.