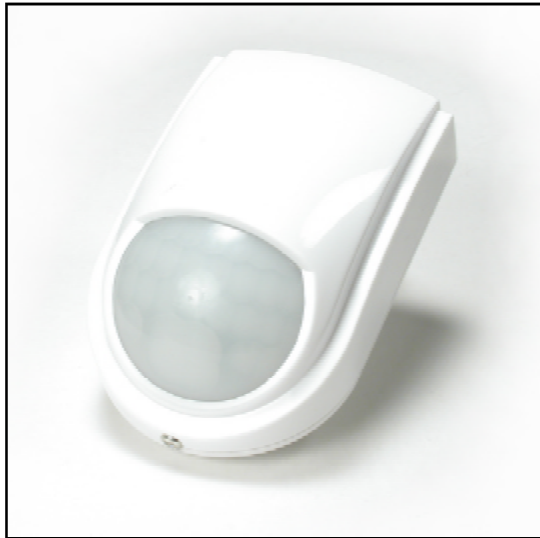




Shown with supplied
wall mount bracket



39 foot (12 m) range, 110 degree coverage
with convex honeycomb hemispherical
infra-red lens



ZIR000 WALL MOUNTED SENSOR

The ZIR000 Wall Mounted Sensor is a component of the HomePro lighting control system. Inclusion of this Wall Mounted Sensor on the ZTH100 Wireless Controller menu allows remote ON/OFF control HomePro receivers to control lighting. Z-Wave nodes of other types can be added to the system and will also act as repeaters if they support this function of repeating the signal received to other modules in the system.

There are no field repairable assemblies on this unit. It is covered by a one year limited warranty. If service is needed, the unit must be returned where purchased.

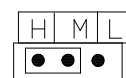
CAUTION! Read and understand these instructions before installing. For indoor use only. Retain instructions for future use.

INSTALLATION

Battery Installation and Sensitivity Selection

1. Remove the screw from the bottom of the enclosure.
3. Select the sensitivity setting preferred for the ZIR000 by setting the corresponding jumpers on the electronic module.

Note that H option is the highest sensitivity while the L option is the lowest. See Figure 1.



Set High

Fig. 1



Set Medium



Set Low (Remove jumper or
put on one pin only)

Mounting Location

The ZIR000 is designed for indoor use. It should not be mounted near large metal objects or on metal surfaces. It should be mounted on a wall or in a corner at a height of approximately 6.5 to 8.2 feet (2 to 2.5 meters) for the best general coverage in an average room.

The detector has been designed to avoid false alarms, nevertheless, it is best to avoid looking directly at sources of heat such as fires and boilers, and always try to keep away from a window.

The ZIR000 can be positioned across from a radiator but not placed above one. Do not mount the ZIR000 where its field of view may be obstructed (e.g. by curtains).

Mounting the Detector

- Place the provided ZIR000 mounting bracket into the location you want to mount it. Mark the wall (or ceiling) where the two screw holes are that will be used.
- Complete the following two steps if mounting in drywall, where there is not a stud.
 - Drill a pilot hole of 11/64".
 - Tap the provided wall anchors into the wall (or ceiling).
- Screw the mounting bracket to the wall (or ceiling).
- Install the four AA batteries into the ZIR000 and snap the ZIR000 onto the mounting bracket.
- Adjust the vertical pattern angle per figure 2, if desired.

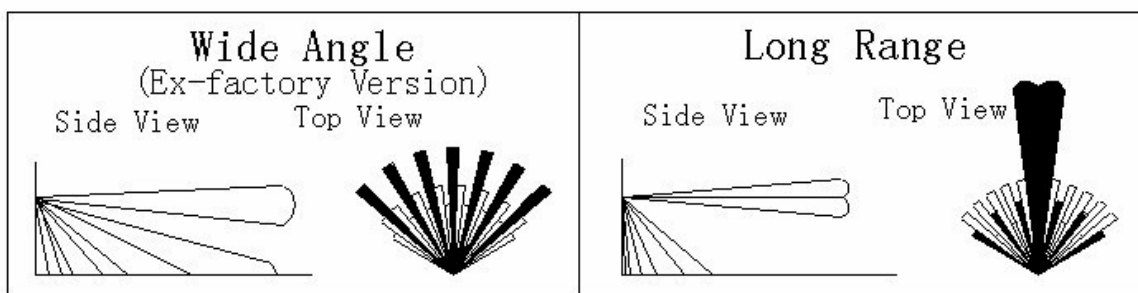


Fig 2

LENS can be adjusted to suit your needs by simply rotating the angle of the lens 180° to change from wide angle version (Default setting) to long range version if required.

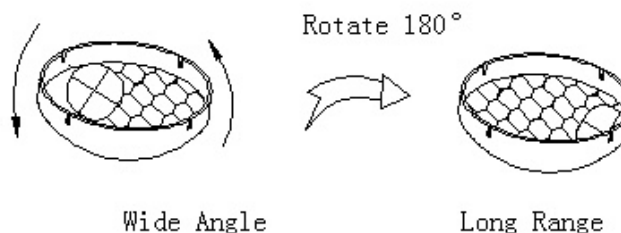
WIDE ANGLE

Angle: 105° x 110°

Distance: 39 feet (12 meters)

Zone Number: 64

Default Setting



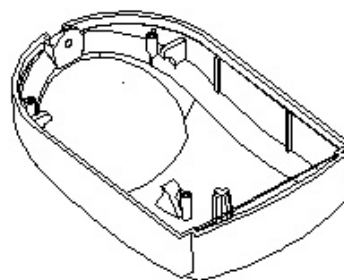
LONG RANGE

Angle: 5° x 5°

Distance: 14m

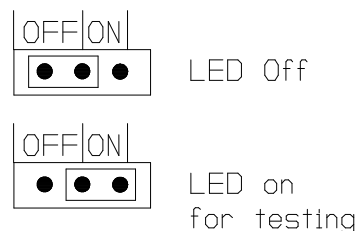
Zone Number: 8

Default Setting + 180°



Walk Test (checking the detection field)

- Place the LED jumper in the "On" location. See figure 3.
- Replace the top enclosure and screw.
- Walk slowly across the field of view (Back and Forth) and observe the LED – it lights whenever you enter or exit a sensitive beam. Allow 5 seconds after the LED has lit to continue the test, this is so the unit can stabilize.
- After testing, remove the retaining screw and the top of the enclosure and set the LED jumper back to the off position.
- Replace top enclosure and retaining screw.



WARRANTY

For warranty and general product information visit our web site at www.act-solutions.com

ABOUT ZIR000'S CERTIFICATION

The ZIR000 has been thoroughly tested by the ETL SEMCO division of Intertek, a nationally recognized testing laboratory. This product was found to be in compliance with safety standards ANSI/UL STD 244A and CAN/CSA C22.2 No. 177.

In addition to compliance with product safety standards, the ZIR000 is also certified to comply with applicable FCC and IC rules and regulations governing RF and EMI emissions.

This device complies with part 15 of the FCC Rules. Operation is subject to the following two conditions: (1) This device may not cause harmful interference, and (2) This device must accept any interference received, including interference that may cause undesired operation.

FCC NOTICE

Note: This equipment has been tested and found to comply with the limits for a Class B digital device, pursuant to part 15 of the FCC Rules. These limits are designed to provide reasonable protection against harmful interference in a residential installation. This equipment generates, uses, and can radiate radio frequency energy and, if not installed and used in accordance with the instructions may cause harmful interference to radio communications. However, there is no guarantee that interference will not occur in a particular installation. If this equipment does cause harmful interference to radio or television reception, which can be determined by turning the equipment off and on, the user is encouraged to try to correct the interference by one or more of the following measures:

- Increase the separation between the equipment and receiver.
- Consult the dealer or an experienced radio/TV technician for help.

IC NOTICE

This Class B digital apparatus complies with Canadian ICES-003.

Cet appareil numérique de la classe B est conforme à la norme NMB-003 du Canada.

Operation is subject to the following two conditions: (1) this device may not cause interference, and (2) this device must accept any interference, including interference that may cause undesired operation of the device.



Power	Four (4) AAA batteries
Mounting	Mounting bracket provided
Signal (Frequency)	908.42 MHz
Range	Up to 100 feet line of sight between the Wireless Controller and /or the
Mounted Dimensions (H x W x D)	4.125" x 2.6" x 3.10" (10.47cm x 6.6cm x 7.8 cm) closest HomePro Reciever Module