

A Letter from the President of ADS	5
Introduction	6
System Requirements	6
Package Contents	7
Chapter 1	
Installation Guide	9
Hardware Installation Guide	11
Installing the Software Drivers	13
Network Configuration	18
Chapter 2	
Using Your USB to Ethernet Networking Overview	25
Why Use a Network?	27
Drive and File Sharing	27
Sharing a Drive or Folder	28
Accessing a Shared Drive or Folder	30
Mapping a Network Drive	32
Print Sharing	35
Sharing a Printer	35
Accessing a Shared Printer	38
Appendixes	
Appendix A	
How to Contact ADS	45
<i>Service and Warranty</i>	46
Appendix B	
FCC Information	48
<i>Credits</i>	49

“Making your Ordinary PC, Extraordinary”

At ADS Technologies we bring the best and latest multimedia technology to your PC. Whether you want to watch TV on your PC, give a great multimedia computer presentation on any TV, surf the web from your couch, receive data broadcast via TV/radio, or connect peripherals efficiently, ADS allows you to do it... Today. While others wait for these technologies, you can have them right now.

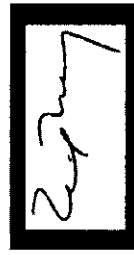
What’s more, all this innovation is reasonably priced. This means that, finally, it makes sense to upgrade your ordinary PC into an Extraordinary, Multimedia PC.

ADS products are easy to use. Most of our products are Plug-and-Play and rarely require any software installation, you simply plug them in. And once they’re plugged in, they’re easy and simple to use. Now, you can look like a computer “guru” using the latest multimedia technology, without actually being one.

Finally, all ADS products are backed by a great customer support team and a 1-year warranty.

This combination of innovation, affordability, simplicity, and support have made our products award-winners in the press and at conventions, and best-sellers around the world. In closing, I wish to thank you for choosing ADS Technologies, and I hope you enjoy your new multimedia experience.

Sincerely,



Michael McCoy
President

Introduction

Instantly Connect your PC to a Network

No need to open the PC and install a network card. USB (Universal Serial Bus) technology means the PC automatically detects the USB to Ethernet and starts the installation. Anyone can quickly and easily add PC's to a network.

You can now connect PC's to a small home network or a large, corporate LAN. Mobile users can connect instantly to a network. 10 Mbps throughput is faster than most PCMCIA or other external network connections. All necessary drivers are provided, so you can install USB to Ethernet automatically. Features built-in error correction and recovery to ensure smooth data transfer across the network.

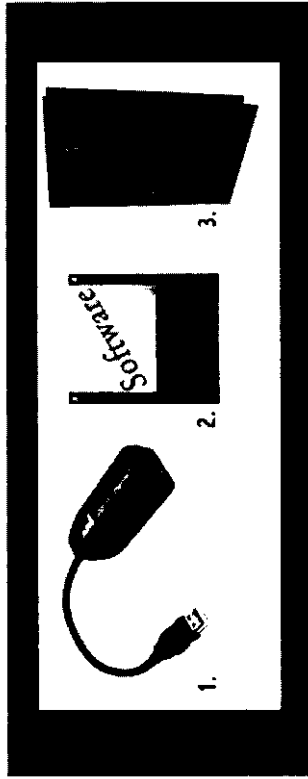
USB Port Features:

- 10 Base-T Ethernet Adapter
- 10 Mbps Throughput
- Works with Desktops and Notebooks
- Full compliance with USB Specifications
- Plug and Play

System Requirements

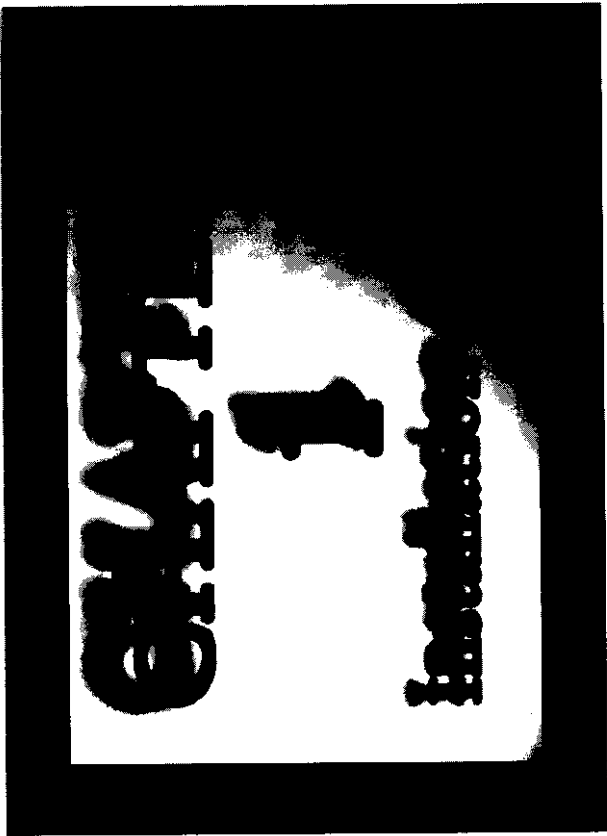
- ✓ **Windows 98**
- ✓ **Windows 98 CD (for driver installation)**
- ✓ **1 Available USB Port**

Package Contents



- 1. USB to Ethernet
- 2. Software Drivers
- 3. Users Manual

Note: If you did not receive one or more of the contents listed above inside the USB to Ethernet package, please contact the vendor you purchased it from or contact ADS directly.



Step 2

- Insert the USB to Ethernet's USB connector into the available port as shown in figure 1.2 below. When you plug the USB to Ethernet into your system it will automatically detect your new hardware. **Do not press any buttons until the hardware install is complete and you continue into the "Installing the Software Drivers" section to follow.**



Figure 1.2

Step 3

- Plug the ethernet cable that runs from your network into the USB to Ethernet's input port as shown in figure 1.3 below.

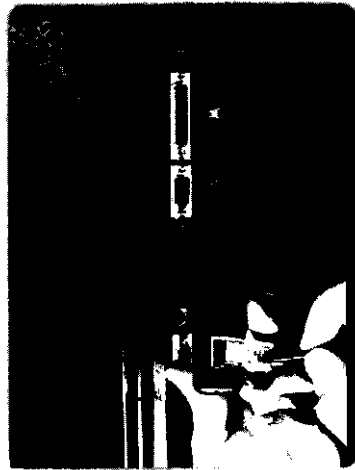


Figure 1.3

Installing the Software Drivers

Your system should have detected the USB to Ethernet as soon as it was plugged in. Please follow the step by step instructions below to complete this part of the installation.

Step 1

- The USB to Ethernet will automatically be detected as shown in figure 1.4 below.



Figure 1.4

Step 2

- You will now see a message window notifying you that the software driver installation will now begin as shown in figure 1.5 below. Click on the "Next" button to proceed with the software driver installation.

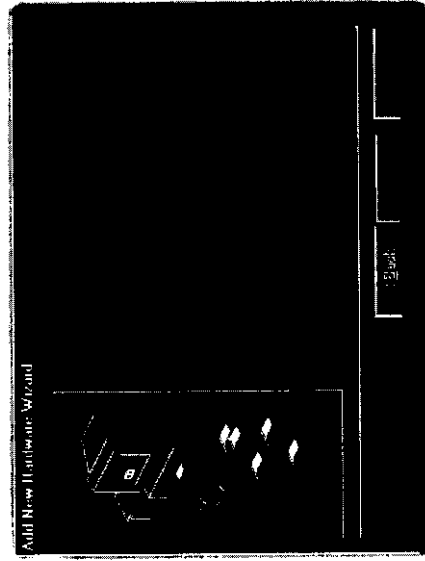


Figure 1.5

Step 3

- You will now see a message window prompting you with the question “What do you want Windows to do?”. Select the first option “Search for the best driver for your device” as shown in figure 1.6 below.

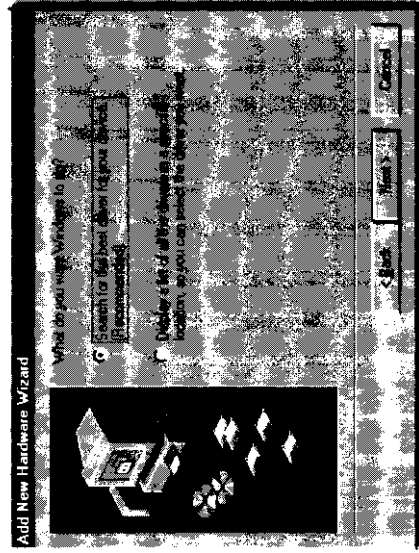


Figure 1.6

Step 4

- You will now need to select where you would like Windows to search for the proper files. Insert the driver software disk that came with USB to Ethernet into your floppy drive. Choose the first selection “Floppy disk drives” as shown in figure 1.7 below. Make sure no other option is selected. Now click the “Next” button.

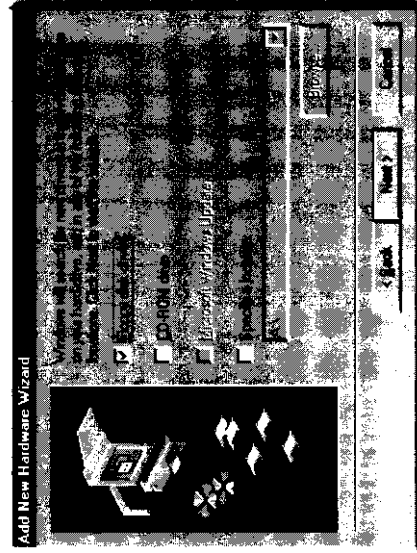


Figure 1.7

Step 5

- Windows will now search your drives for the proper files. Once it has located the files it needs, you will be prompted with a window showing you the file Windows has found for your device as shown in figure 1.8 below. Click on the “Next” button to continue.

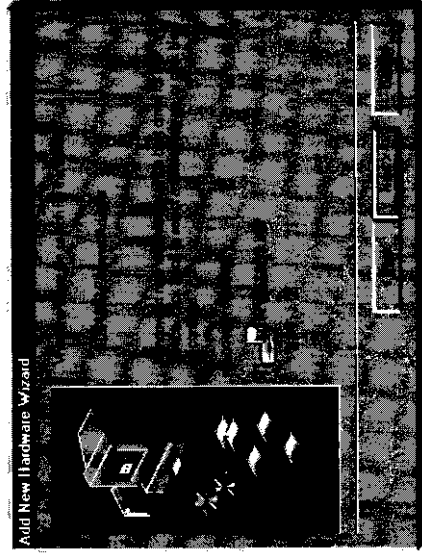


Figure 1.8

Step 6

- You will now be prompted for the driver disk as shown in figure 1.9 below. Click on the “OK” button to continue.



Figure 1.9

Step 7

- Windows will now ask you (again) for the path to the proper files. Type in the drive letter for your floppy disk drive (typically a:) as shown in figure 1.10 on the following page.

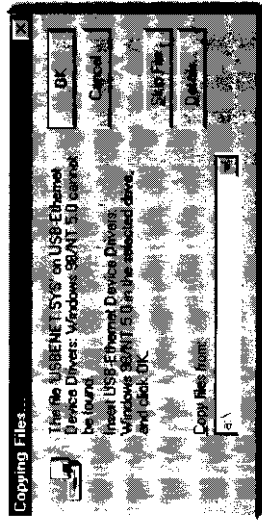


Figure 1.10

Step 8

- After Windows has installed the software driver files from the floppy disk, it will need to install some files from your Windows 98 CD to complete the software driver installation. Windows will now prompt you to insert the Windows 98 CD into your CD-ROM drive as shown in figure 1.11 below. Insert the Windows 98 CD into the CD-ROM drive and click “OK.” Windows may then ask for the path to the Windows 98 CD. Type in the path to the proper drive and click “OK” to complete the installation.



Figure 1.11

Step 9

- After windows has completed it's portion of the software installation, it will inform you that it is complete as shown in figure 1.12 on the following page. Click the “Finish” button to proceed.

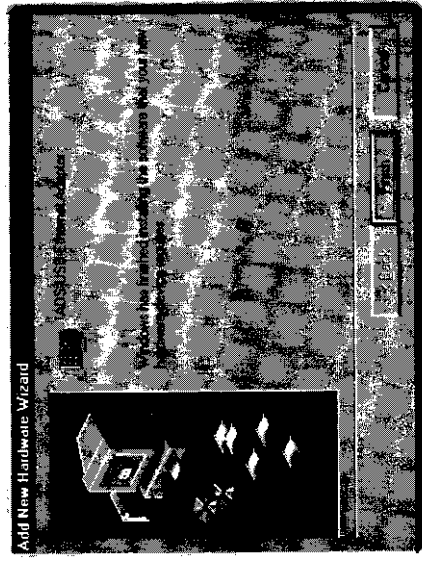


Figure 1.12

Step 10

- Windows will now ask if you would like to reboot your system as shown in figure 1.13 below. Click on the “Yes” button to proceed with the system reboot. You must do this in order for your system to recognize the new network settings properly.

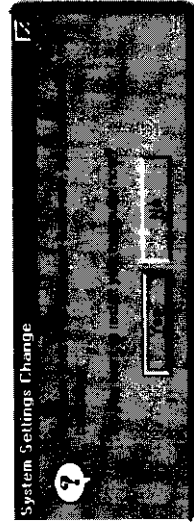


Figure 1.13

The software driver installation is now complete. Please continue with the following section titled “Network Configuration.”

Network Configuration

We will now explain how to configure your network. As mentioned at the end of the previous section you will need your Windows 98 CD for this portion of the install as we will be adding a couple of additional network components. As we proceed we will explain briefly what each of these network components will allow you to do.

Step 1

- Double click on the "My Computer" icon. (This icon is usually placed in the top left hand corner of your desktop.) You will now see the "My Computer" window. It will look similar to figure 1.14 below.

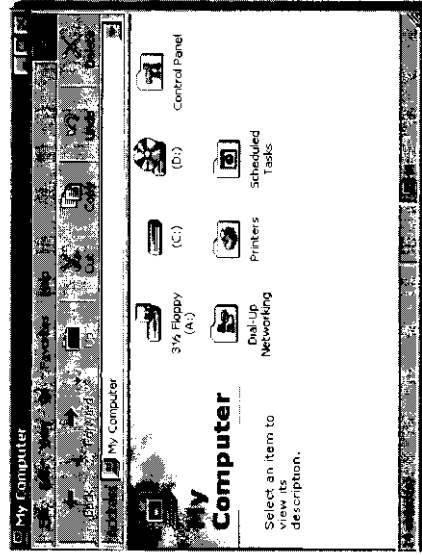


Figure 1.14

Step 2

- Double click on the "Control Panel" icon. You will now see the "Control Panel" window. It will look similar to figure 1.15 on the following page.

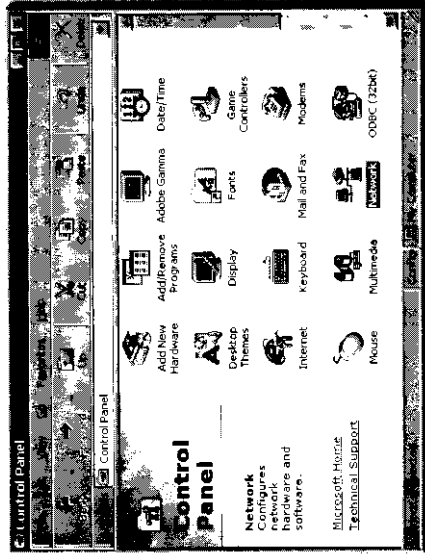


Figure 1.15

Step 3

- Double click on the "Network" icon as highlighted in figure 1.15 towards the bottom of the "Control Panel" window. You should now see the "Network" configuration window as shown in figure 1.16 below.

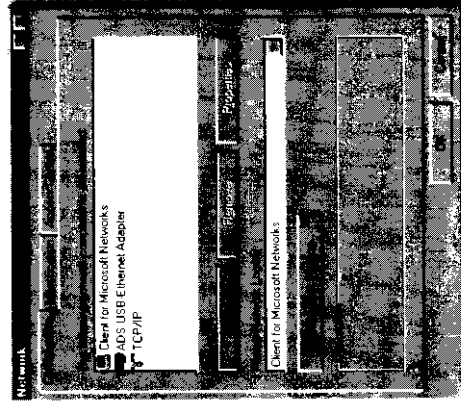


Figure 1.16

Step 4

- Click on the "ADD" button. You will now see the "Select Network Component Type" window as shown in figure 1.17 on the following page.

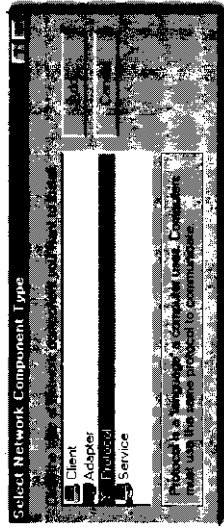


Figure 1.17

Step 5

- ❑ Select the protocol option as highlighted in figure 1.17 above and click on the "Add..." button. You will now see the "Select Network Protocol" window as shown in figure 1.18 below.

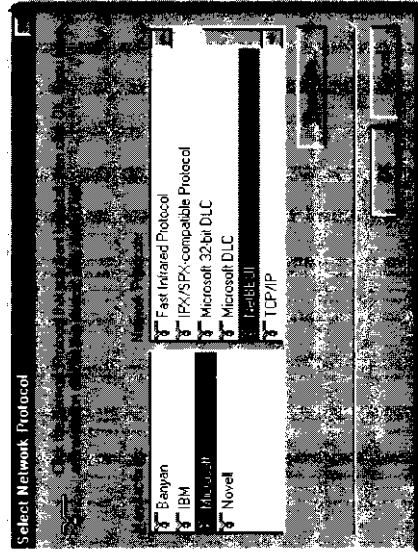


Figure 1.18

Step 6

- ❑ From the "Manufacturers:" window (on the left) select "Microsoft." Then from the "Network Protocols:" window (on the right) select "NetBEUI." Click on the "OK" button to add the protocol. You will now be back at the "Network" configuration window.

Step 7

- ❑ From the "Network" configuration window select "Add" again to return to the "Select Network Protocol" window. This time select "Services" as shown in figure 1.19 below. Click on "Add..." to continue.

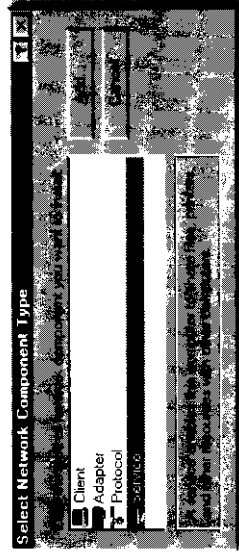


Figure 1.19

Step 8

- ❑ You will now see the "Select Network Service" window as shown in figure 1.20 below.

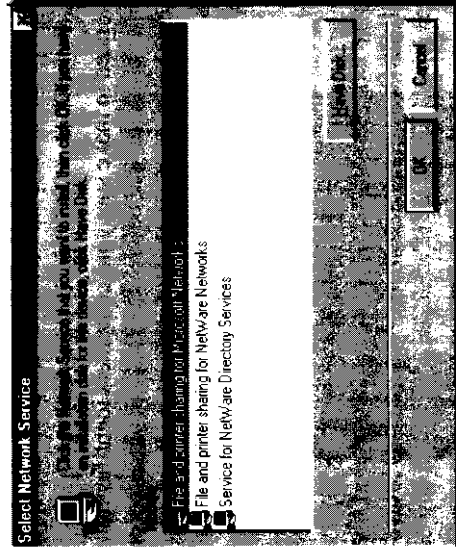


Figure 1.20

Step 9

- ❑ Select "File and printer sharing for Microsoft Networks" as shown in figure 1.20 above. After you have done this click the "OK" button to proceed with the network service installation.

Step 10

- If you would like to share files and drives or you would like to share a printer you will need to do the following. Click on the "File and Printer Sharing" button in the configuration window. You will now see the "File and Print Sharing" window as shown in figure 1.21 below.

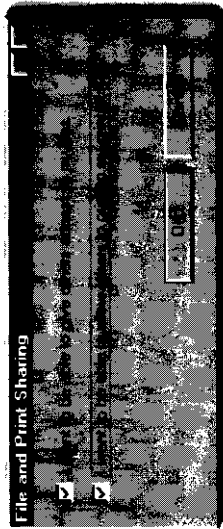


Figure 1.21

Step 11

- Select both options in the "File and Print Sharing" window as shown in figure 1.21 above to enable both file and print sharing

Step 12

- You will now need to make sure your computers identification is correct. This identification information will be seen by all other computers on your network. To access the network identification information click on the "Identification" tab in the "Network" window. This tab is next to the "configuration" tab as show in figure 1.21 below.

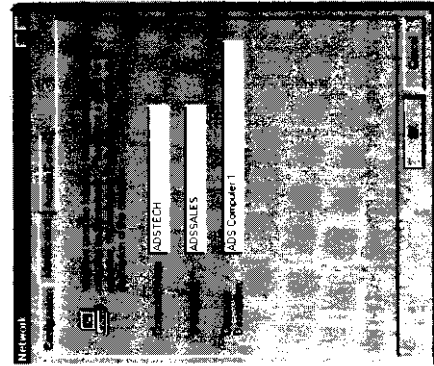


Figure 1.22

Step 13

- You now need to enter the required information for your network identification. The "Computer Name:" will be the name that all computers on your network will see for your computer.

The "Workgroup:" information will allow you to categorize individuals on your network, for example you could put all your sales staff in one group and all your accounting staff in another.

The "Computer Description:" field allows you to describe what this particular computer is for, such as file sharing.

Step 14

- Click the "OK" button in the configuration window to apply the setting we have just made. Windows will now ask you for the Windows 98 CD as shown in figure 1.23 below. Make sure the Windows 98 CD is in your CD-ROM drive and select "OK." Windows may then ask for the path to the Windows 98 CD. Type in the path to the proper drive and click "OK" to complete the installation.



Figure 1.23

Step 15

- Windows will now ask if you would like to reboot your system as shown in figure 1.24 below. Click on the "Yes" button to proceed with the system reboot. You must do this in order for your system to recognize the new settings properly.

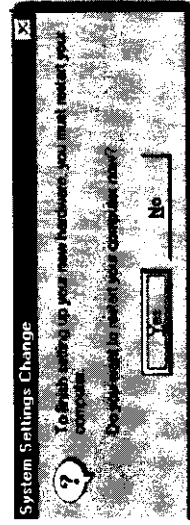


Figure 1.24

Using USB to Ethernet

CHAPTER

2

Networking Overview

We will explain the main features of networking and how to enable them on your new network. In the sections to follow we will discuss and walk you through setting up each of the topics below:

1. **Sharing a Drive or Folder**
2. **Accessing a Shared Drive or Folder**
3. **Mapping a network Drive**
4. **Sharing a Printer**
5. **Accessing a Shared Printer**

Why Use a Network?

A network is a simple way of sharing a computers files and printers, as well as many other peripherals. For example you can buy additional software and hardware from various dealers and manufacturers to share a modem over a network. Keep in mind we are just covering a few of the basics here.

Using a network makes the work flow much smoother and more efficient and allows you to do more important things than running your new document over to John Smith's office. It also makes it much easier to pass large files to one another without having to purchase high capacity disk drives or other storage devices. You can also share a printer thus eliminating the costs of purchasing a printer for every computer. This also means you don't have to copy files to a floppy disk and have John Smith print things out for you when he has much more important things to do, such as writing helpful manuals for your customers. Let's enable your network to do some of these time and money saving things.

Step 5

- You will now need to enter the drive or folders shared information.

The “**Share Name:**” information will be the name that all computers on your network will see for this drive.

The “**Comment:**” information can be used as an instruction or a note to users describing what the device is. Just as the “Share Name,” it too will be seen by all computers on your network.

The “**Access Type:**” field lets you choose how much access a specified user has. If you would like users to have read only access (*They can view and open files but cannot delete, edit, move files to or from, or change the files on this drive*) on your network then choose “Read Only.” If you would like to give them full access (*They can use this drive freely as if it were their own*) then select “Full.” If you would like some users to have read only access and some to have full access then choose the “Depends On Password” option.

The “**Passwords:**” field lets you choose a password for each access type. This option will vary depending on your access type selection. The password field is optional for both “Read Only” and “Full,” however it is required only if you have selected “Depends On Password.”

Step 6

- Left mouse click one time on the “OK” button. If you have entered any password information, you will now be prompted to verify it.

CONGRATULATIONS! You have just finished sharing your drive or folder. Please proceed to the following section on how to map a network drive.

Accessing a Shared Drive or Folder

Step 1

- Double click on the “Network Neighborhood” icon. (This icon is usually placed in the mid-top left hand corner of your desktop below the “My Documents” or “My Computer” icon.) You will now see the “Network Neighborhood” window. It will look similar to figure 2.4 on the following page.

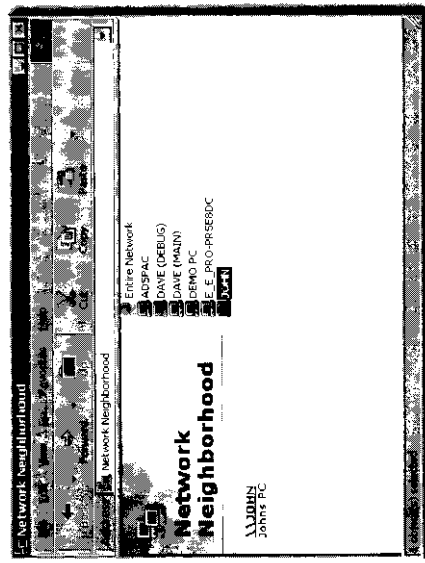


Figure 2.4

Step 2

- Double click on the computer name that has the shared drive or folder that you wish to access. You will now see the window of shared objects for the computer you have selected as shown in figure 2.5 below.

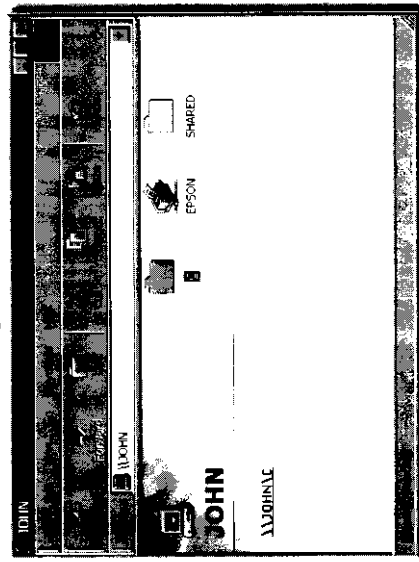


Figure 2.5

Step 3

- Double click on the shared drive or folder you wish to access. If it is password protected, you will now be prompted to enter it. You will now see the shared drive or folders contents.

Mapping a Network Drive

Before we proceed with explaining how to accomplish mapping a network drive, let us first explain what it will accomplish. What exactly is mapping a network drive? It is when you make a link to a network drive or folder and map it as a local drive. In other words you assign it an available drive letter just as your floppy drive, hard drive, or CD-ROM drive has. From that point on you can access the drive or folder as if it were another hard drive on your system. This makes sharing files between two systems much faster and easier.

Note: *Before you can map a network drive, there must first be a shared drive or folder on the system you would like to share files with.*

Step 1

- Double click on the "Network Neighborhood" icon. (This icon is usually placed in the mid-top left hand corner of your desktop below the "My Documents" or "My Computer" icon.) You will now see the "Network Neighborhood" window. It will look similar to figure 2.6 below.

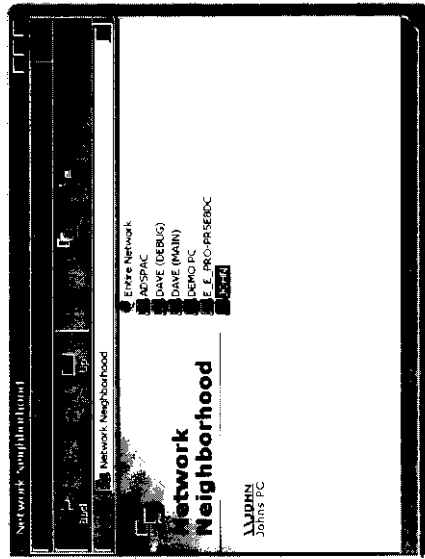


Figure 2.6

Step 2

- Double click on the computer name you would like to map a network drive too. You will now see the window of shared objects for the computer you have selected as shown in figure 2.7 on the following page.

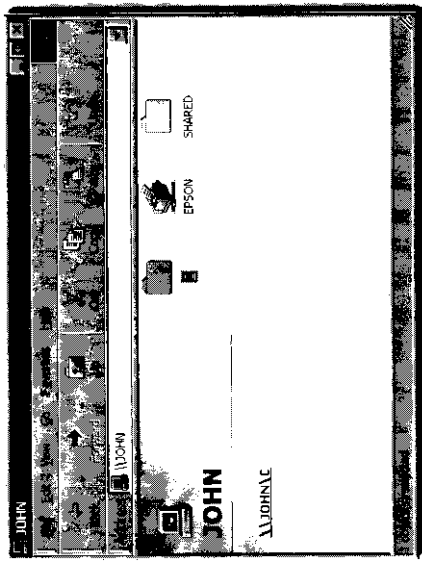


Figure 2.7

Step 3

- Select the drive or folder you would like to map to your system by clicking on it one time. The folder should then be highlighted as shown in figure 2.7 above.

Step 4

- Click on the "File" menu at the top left hand side of the menu bar. You will now see the drop down menu as pictured in figure 2.8 below.

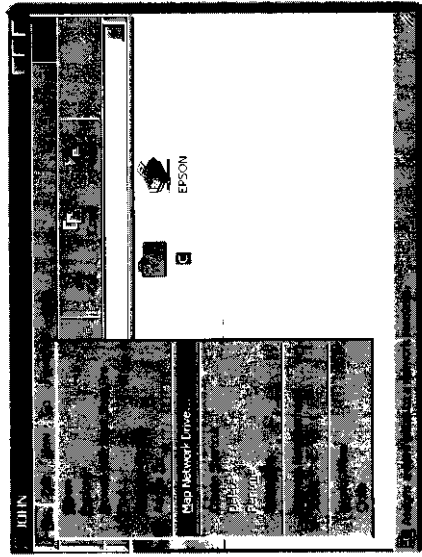


Figure 2.8

Print Sharing

There are two sides of print sharing that we will discuss here. The first is "Sharing a Printer." This will allow you to share a printer that is on any given system so that anyone that is connected to your network can access it. The second is "Accessing a Shared Printer." This will allow a user to access the shared printer on any given system.

Sharing a Printer

Step 1

- Double click on the "My Computer" icon. (This icon is usually placed in the top left hand corner of your desktop.) You will now see the "My Computer" window. It will look similar to figure 2.10 below.

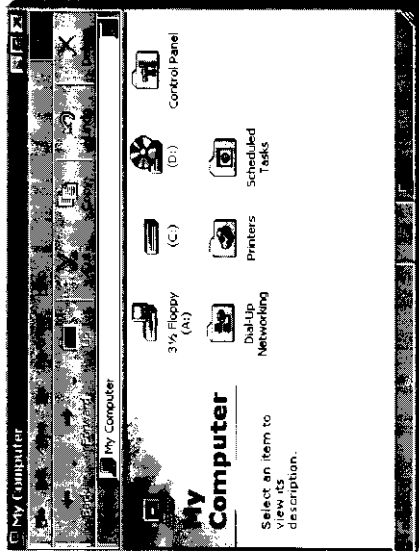


Figure 2.10

Step 2

- Double click on the "Printers" icon. You will now see the "Printers" window. It will look similar to figure 2.11 on the following page.

Step 5

- From the drop down menu select "Map Network Drive..." as highlighted in figure 2.8 on the previous page. You will now see the properties window for the selected drive or folder as shown in figure 2.9 below.



Figure 2.9

Step 6

- You will now need to enter the drive or folders mapping information.

The "Drive:" information will be the drive letter that your system will use as its connection. Select which drive letter you would like to represent the selected shared drive or folder.

The "Path:" field displays the network path to your drive.

The "Reconnect at logon" option when selected, will automatically remap the network drive or folder after you shut down your system and relogon. If you do not select this option, when you shut down your system and relogon, you will need to repeat all of the steps in this section.

Step 7

- Left mouse click one time on the "OK" button. Your mapped network drive will now be accessible through "My Computer" or "Windows Explorer" just as any other hard drive on your system.

CONGRATULATIONS! You have just finished mapping a network drive or folder. Please move to the next section on print sharing.

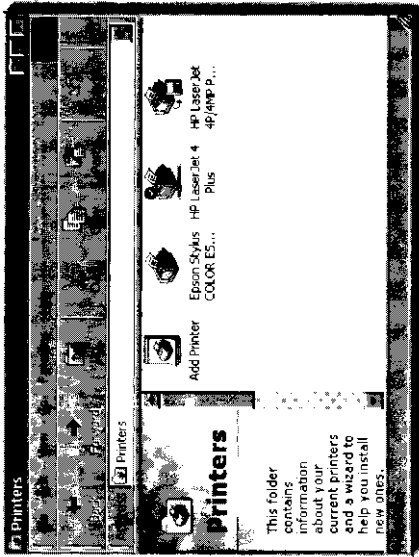


Figure 2.11

Step 3

- Select the printer you would like to share by left clicking on it one time.

Step 4

- Click on the "File" menu at the top left hand side of the menu bar in the "Printers" window. You will now see the drop down menu as pictured in figure 2.12 below.

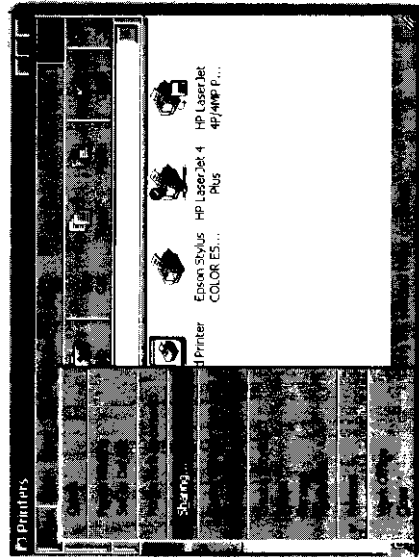


Figure 2.12

Step 5

- From the drop down menu select "Sharing..." as highlighted in figure 2.12 on the previous page. You will now see the properties window for the selected printer as shown in figure 2.13 below.

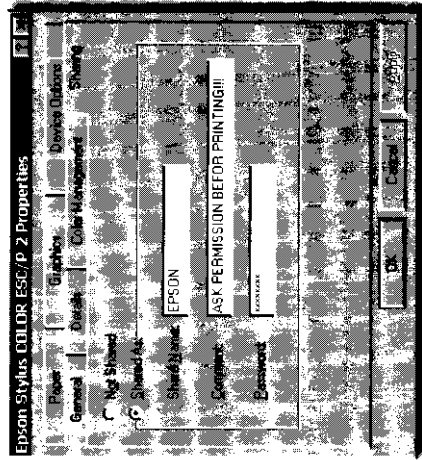


Figure 2.13

Step 6

- Select the "Shared As:" option in the print share properties window.

Step 7

- You will now need to enter the printers shared information.

The "Share Name:" information will be the name that all computers on your network will see for your printer.

The "Comment:" information can be used as an instruction or a note to users describing what the device is. Just as the "Share Name," it too will be seen by all computers on your network.

The "Password:" field is optional. If you would like to restrict use of the printer to only those who have the password, then enter the desired password for the selected printer. If you would like this device to be freely used by all computers on your network then leave this area blank.

Step 8

- Left mouse click one time on the "OK" button. If you have entered a password, you will now be prompted to verify it.

CONGRATULATIONS! You have just finished sharing your printer. Please proceed to the following section on how to access a shared printer over a network.

Accessing a Shared Printer

Step 1

- Double click on the "My Computer" icon. (This icon is usually placed in the top left hand corner of your desktop.) You will now see the "My Computer" window. It will look similar to Figure 2.14 below.

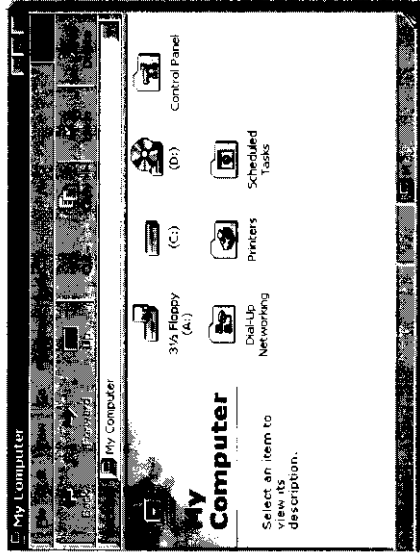


Figure 2.14

Step 2

- Double click the "Printers" icon. You will now see the "Printers" window. It will look similar to figure 2.15 on the following page.

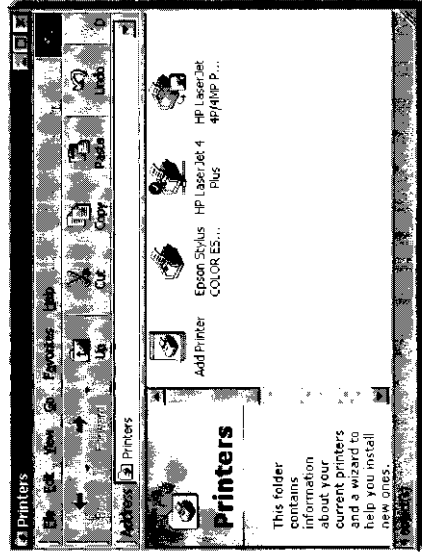


Figure 2.15

Step 3

- Double click the "Add Printer" icon. You will now see the initial welcome window for the "Add Printer Wizard." It will look similar to figure 2.16 below.

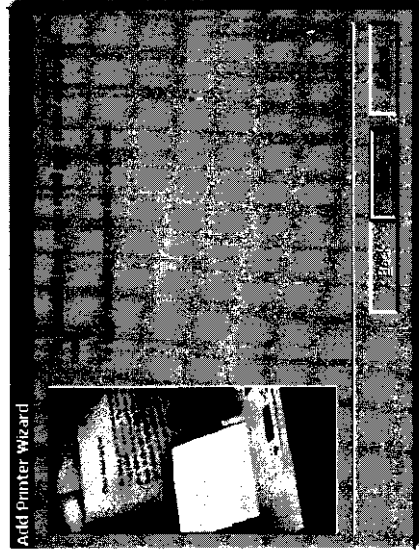


Figure 2.16

Step 4

- Click the button that says "Next." You will now see the next window as shown in figure 2.17 on the following page.

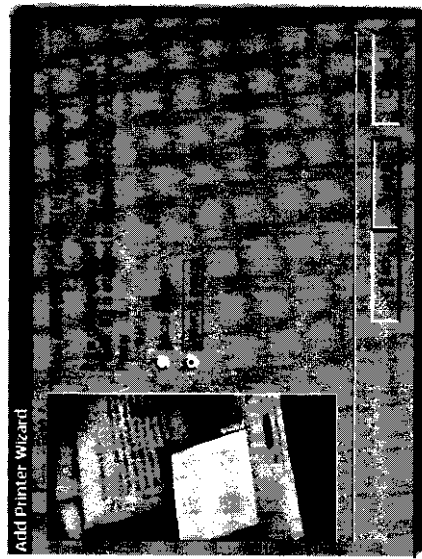


Figure 2.17

Step 5

- Select the "Network Printer" option and click the button that says "Next." You will now see the next window as shown in figure 2.18 below.

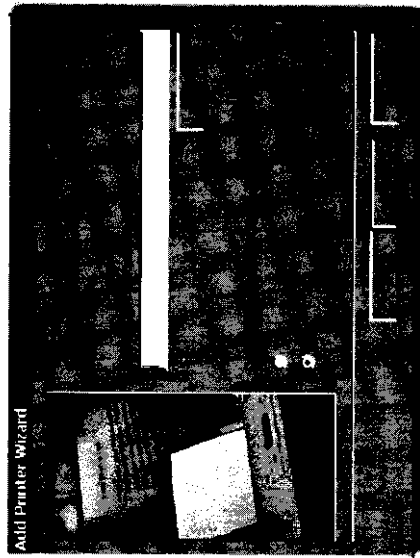


Figure 2.18

Step 6

- In the above window you will need to enter the network path to the shared printer. To locate this window click the button that says "Browse." You will now see the "Browse" window as shown in figure 2.19 on the following page.

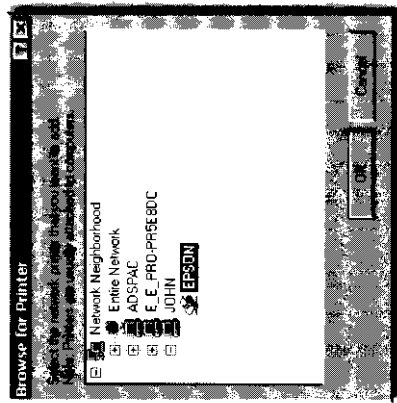


Figure 2.19

Step 6

- You will need to locate the name of the computer that is sharing the desired printer. Once you have located it, click the plus next to the name. Now double click on the shared printer. You will now be back at the previous window with the path of the network printer in the path field as shown in figure 2.20 below.

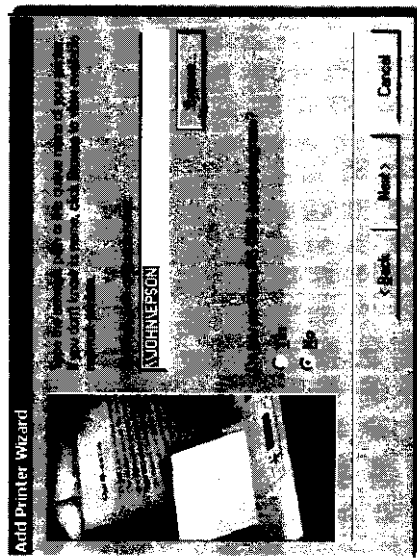


Figure 2.10

Step 7

- If you will be printing from DOS applications while in Windows select "Yes," if not then select "No." Click the button that says "Next." You will now see the next window as shown in figure 2.21 on the following page.

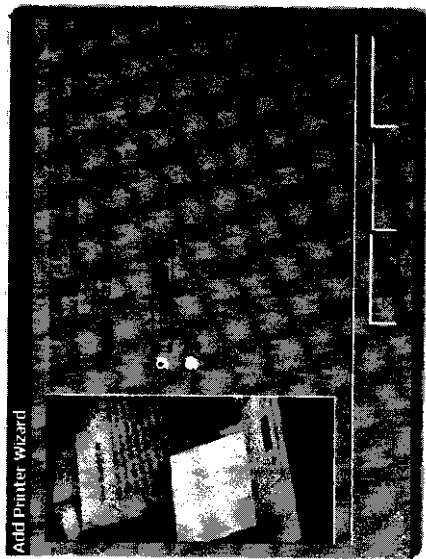


Figure 2.21

Step 8

- You will now be asked if you would like to print a test page. We recommend you do this to ensure that your printer has been installed properly. Click the button that says "Finish" to complete your installation. Your printer should now print the test page.

CONGRATULATIONS! You have just finished connecting to a shared printer. We know you will enjoy your networking experience and are happy to have made things easier for you.

