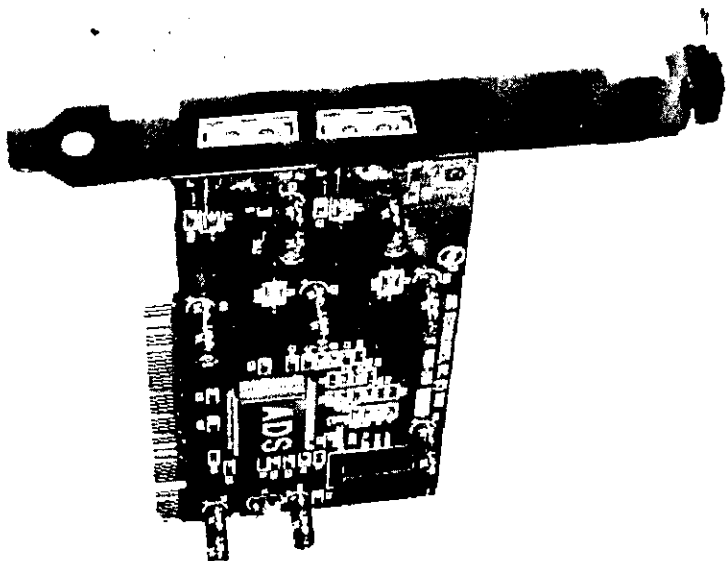


EXHIBIT 3

USER MANUAL

ADS Technologies
13909 Belvedere Street
Cerritos, CA, 90703
Corporate: 562.926.1928
Technical Support: 562.926.4338
Fax: 562.926.0518
24 Hour BBS: 562.802.0608
Web Address: www.adstech.com

Port (PCI)



USB Port (PCI)
Users Guide

Table of Contents

A Letter from the President of ADS	5
Introduction	6
System Requirements	6
Package Contents	7
USB Port (PCI)	
Installation Guide	9
Installing the USB Port	11
Installing the Software Drivers	14
Using Your USB Port	16
Appendixes	
Appendix A	
How to Contact ADS	19
Service and Warranty	20
Appendix B	
FCC Information	22
Credits	23

A Letter from the President of ADS Technologies

“Making your Ordinary PC, Extraordinary”

At ADS Technologies we bring the best and latest multimedia technology to your PC. Whether you want to watch TV on your PC, give a great multimedia computer presentation on any TV, surf the web from your couch, receive data broadcast via TV/radio, or connect peripherals efficiently, ADS allows you to do it... Today. While others wait for these technologies, you can have them right now.

What's more, all this innovation is reasonably priced. This means that, finally, it makes sense to upgrade your ordinary PC into an Extraordinary, Multimedia PC.

ADS products are easy to use. Most of our products are Plug-and-Play and rarely require any software installation, you simply plug them in. And once they're plugged in, they're easy and simple to use. Now, you can look like a computer "guru" using the latest multimedia technology, without actually being one.

Finally, all ADS products are backed by a great customer support team and a 1-year warranty.

This combination of innovation, affordability, simplicity, and support have made our products award-winners in the press and at conventions, and best-sellers around the world. In closing, I wish to thank you for choosing ADS Technologies, and I hope you enjoy your new multimedia experience.

Sincerely,



Michael McCoy
President

Introduction

Add a USB device to your PC!

Instantly add USB peripherals to your PC. Never open your computer case again after you have your USB Port (PCI) installed. Say good-bye to confusing cables. The USB Port (Universal Serial Bus) allows you to instantly connect USB devices to your computer. The USB Port will allow you to attach 2 USB devices instantly. You never have to worry about running out of slots in your computer or those confusing IRQ's again. You can also "Hot Swap" your USB devices. What does this mean? You never have to power down your PC to install hardware again. Gamers can switch joysticks on the fly without interrupting their game. Users can switch their Mice on the fly. Welcome to the USB Revolution.

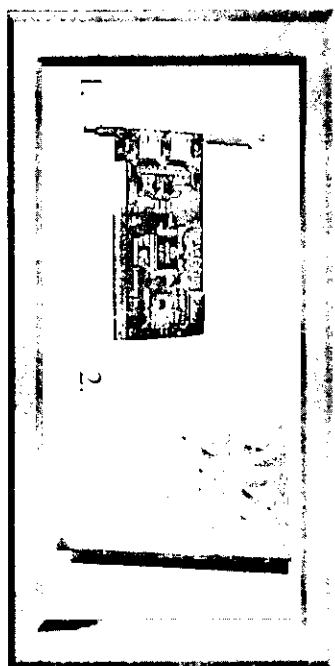
USB Port Features:

- Connect 2 USB devices Instantly
- Supports full 12 Mbps and 1.5 Mbps low speed devices
- Auto detect speeds and connections of devices
- Full compliance with USB Specifications
- Plug and Play
- Fully Compatible with USB OHCI specification

System Requirements

- ✓ **Windows 98**
- ✓ **Windows 98 CD (for driver installation)**
- ✓ **1 Available PCI Slot**

Package Contents



- 1. USB Port (PCI)
- 2. User's Manual

Note: If you did not receive one or more of the contents listed above inside the USB Port package, please contact the vendor you purchased it from or contact ADS directly.

**USB Port
(PCI)**

Installation Guide

Installing the USB Port (PCI)

In this section we will explain how to install your USB Port (PCI) into your PC. Next to each step there is a check box for your convenience. After each step has been completed, simply mark the check box and move to the next step.

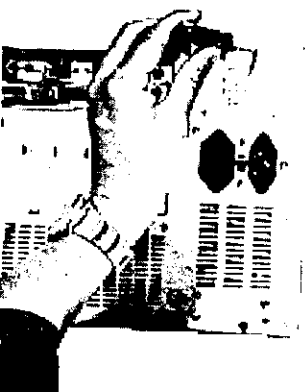
Step 1

- Power off the computer, then disconnect the power cord.



Step 2

- Remove each screw found on the back of the computer and remove the shell from the computer.



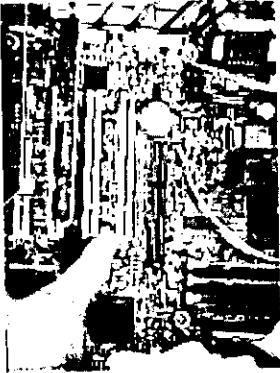
step 3

- With the power cable disconnected from your computer, touch the metal part of the case to ground yourself. This will discharge any static electricity which can damage your computer.



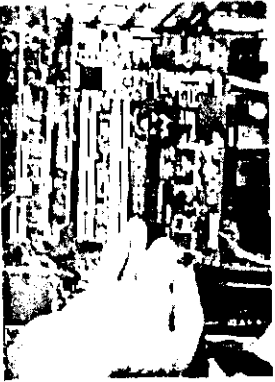
Step 4

- Locate an available PCI expansion slot. This will be in the area of your computer where other cards that look similar to the USB Port are installed.



Step 5

- Visually confirm that the USB Port will fit into the available slot you have chosen.

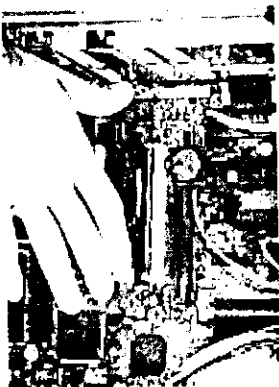


- If necessary, remove the knockout on the back of the PC which corresponds to the PCI slot you have confirmed as your selection. If there is a screw, place it in a safe spot as you will be using it to attach the USB Port.



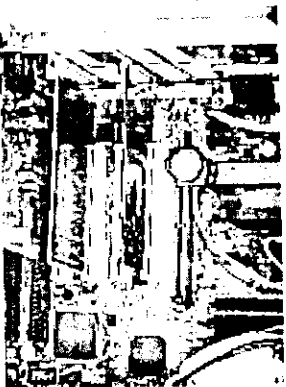
Step 7

- Push the USB Port card firmly into the PCI slot. Apply pressure as needed until the edge connector is completely seated.



Step 8

- Once the USB Port is fully seated, the gold edge connectors are completely in the slot.



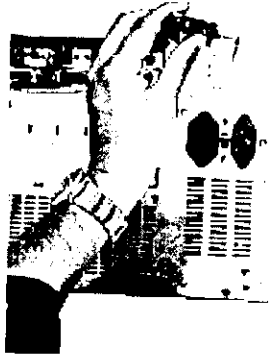
Step 9

- Mount the USB Port in place with a screw. Make sure the screw is firmly tightened so the USB Port does not slide out of its seated position.



Step 10

- Replace the computers shell and screw it in place.



Step 11

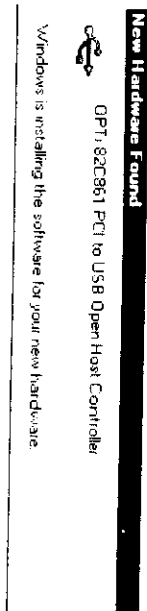
- Now that your USB Port card is installed and the shell is in place, you can safely connect the power cable and move on to the next section titled "Installing the Software Drivers" on the following page.

Installing the Software Drivers

When you initially connect your USB Port, Windows will automatically detect you have a new device and thus request the Windows 98 CD. To follow are step by step instructions on how to install the software drivers.

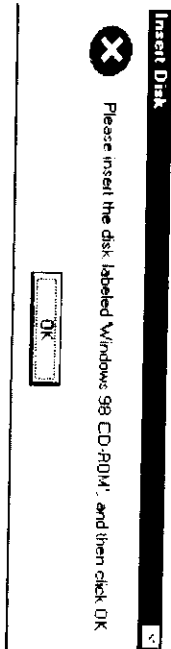
Step 1

- Below is a picture of the dialog box that will notify you that Windows has detected your new hardware.



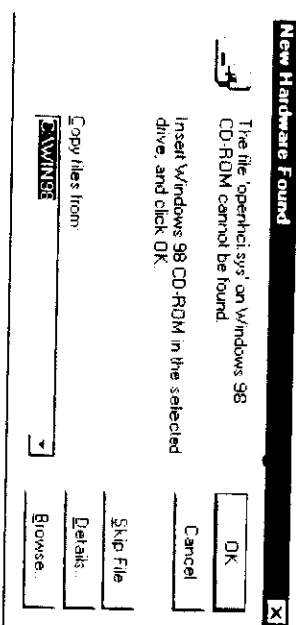
Step 2

- Windows will then ask you to insert the Windows 98 CD-ROM. Once you have inserted the CD-ROM into the CD drive, left mouse click one time on the button that says "OK."



Step 3

- If the default path to the Windows 98 directory on your CD-ROM is incorrect, you will see a dialog box as shown in the picture below. Simply type in the correct path to your CD-ROM (example "d:\") drive and left mouse click one time on the button that says "OK."



How To Contact ADS

The ADS team has tried their hardest to make the USB Hub as trouble free as possible. However we know problems may still arise or you may simply have questions. There are a couple of ways to contact ADS.

Sales:

Phone Number: 562-926-1928

Fax Number: 562-926-0518

E-Mail Address: sales@adstech.com

Technical Support:

Phone Number: 562-926-4338

Fax Number: 562-926-0518

E-Mail Address: adstech@adstech.com

Internet Web Site: www.adstech.com

Federal Communications Commission Radio Frequency Interference Statement

Note: This equipment has been tested and found to comply with the limits for a class B digital device, pursuant to Part 15 of the FCC Rules. These limits are designed to provide reasonable protection against harmful interference when the equipment is operated in a residential installation. This equipment generates, uses and can radiate radio frequency energy and if not installed and used in accordance with the instruction manual may cause harmful interference to radio communications. However, there is no guarantee that interference will not occur in a particular installation. If this equipment does cause harmful interference to radio or television reception which can be determined by turning the equipment off and on, the user is encouraged to try to correct the interference by one or more of the following measures:

- * Reorient or relocate the receiving antenna.
- * Increase the separation between the equipment and receiver.
- * Connect the equipment into an outlet on a circuit different from that to which the receiver is connected.
- * Consult the dealer or an experienced radio TV technician for help.

Notice:

- (1) The changes or modifications not expressly approved by the party responsible for compliance could void the user's authority to operate the equipment.
- (2) Shielded interface cables and AC power cord, if any, must be used in order comply with the emission limits.

