

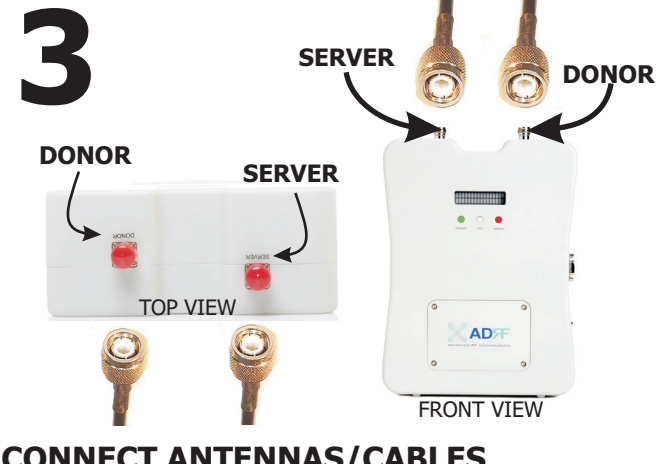
# 1



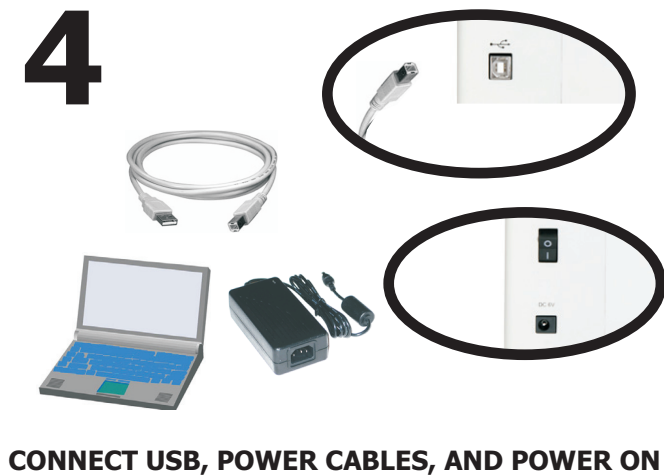
# 2



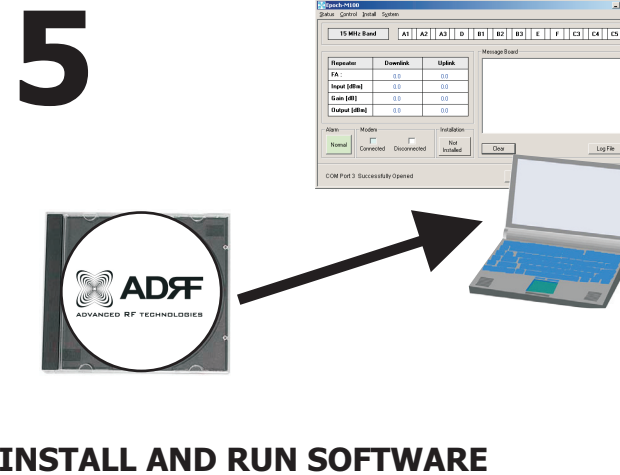
# 3



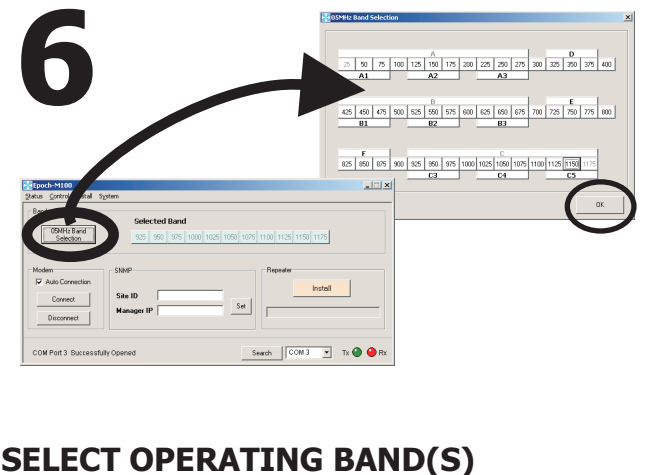
# 4



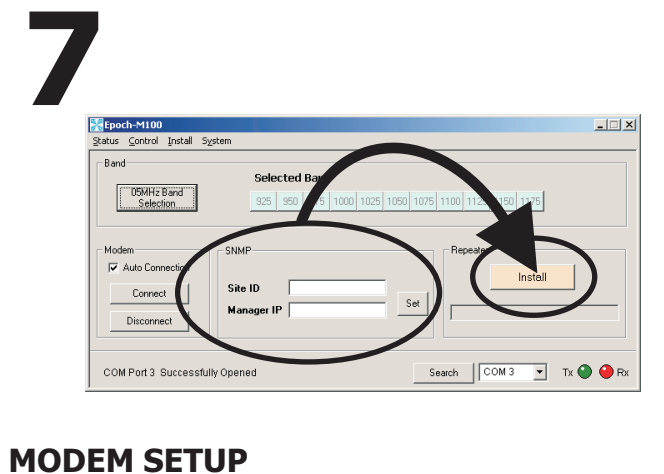
# 5



# 6



# 7



# 8



Documentation and Software can be found on the CD-ROM included in the M1P box.

**Technical Support**  
 Contact ADRF's Technical Support Team for assistance with:

- Software Questions
- Setting up the M1P
- M1P Operation
- Troubleshooting Questions

USA: 1-323-254-8131  
[www.adrftech.com](http://www.adrftech.com)



ADVANCED RF TECHNOLOGIES

# 1 OPEN THE BOX

The box should contain:

- 1 - Epoch-M1P Repeater
- 1 - CD (Software and User Guide)
- 1 - USB Cable
- 1 - AC/DC Power Adapter
- 1 - Quick Install Guide Sheet

# 2 REPEATER PLACEMENT

Locate the place where you will put the M1P. You can hang the M1P or put it on anything. In any case, make sure the M1P is securely fastened to a wall or any structure so that it won't move.

# 3 ANTENNA CONNECTION

Connect the donor/server antenna cables to the M1P's antenna ports on top as shown in figure 3.

Adjust antenna positioning to assure maximum coverage.

# 4 USB/POWER

Connect the USB cable to your computer and the M1P.

Plug in the power converter. (110VAC)

Turn on the M1P.

# 5 DRIVER/SOFTWARE

Use the CD-ROM (included in the M1P box) to install the drivers when the New Hardware Wizard comes up. This will ensure that the M1P communicates properly with the software.

Next, install the software from the CD. After installation, launch the software.

# 6 BAND SELECTION

Go to INSTALL menu on the top of the GUI. On the top of the window, click the 5/10/15MHz BAND SELECTION button.

Click the center frequency on the pop-up window and click OKAY. Double check the SELECTED BAND information.

# 7 MODEM Set-up

\*If the M1P does not have a modem inside, proceed to step 8.

Make sure the AUTO CONNECTION box is checked. Enter the Site ID and Manager IP information provided by the carrier.

Click SET button and, finally, click "INSTALL" button. When installation is complete, you will get a confirmation message.

Go to STATUS menu and verify input/output power, gains, etc. Please make sure that there are no ALARMS generated.

# 8 POST SURVEY

Congratulations! The M1P has been successfully installed and is ready for use.

It is recommended to do a walk-through inside of the building and make live phone calls to verify RF coverage.

Documentation and Software can be found on the CD-ROM included in the M1P box.

## Technical Support

Contact ADRF's Technical Support Team for assistance with:

- Software Questions
- Setting up the M1P
- M1P Operation
- Troubleshooting Questions

USA: 1-323-254-8131

[www.adrftech.com](http://www.adrftech.com)

