

User Manual

DLT-M8110

Computer



Copyright

The documentation and the software included with this product are copyrighted 2016 by AdvantechDLoG Co., Ltd. All rights are reserved. AdvantechDLoG Co., Ltd. reserves the right to make improvements in the products described in this manual at any time without notice. No part of this manual may be reproduced, copied, translated or transmitted in any form or by any means without the prior written permission of AdvantechDLoG Co.,Ltd. Information provided in this manual is intended to be accurate and reliable. However, AdvantechDLoG Co., Ltd. assumes no responsibility for its use, nor for any infringements of the rights of third parties, which may result from its use.

Acknowledgements

All other product names or trademarks are properties of their respective owners.

Declaration of Conformity

CE Conformity Statement

Radio products with the CE alert marking comply with the R&TTE Directive (1999/5/EC) issued by the Commission of the European Community. Compliance with this directive implies conformity to the following European Norms (in brackets are the equivalent international standards)

- EN 60950-1 (IEC60950-1) - Product Safety

Products that contain the radio transmitter are labeled with CE alert marking and may also carry the CE logo.

FCC Compliance Statement

This device complies with part 15 of the FCC Rules. Operation is subject to the following

two conditions:

1. This device may not cause harmful interference;
2. This device must accept any interference received, including interference that may cause undesired operation.

Caution! *Exposure to Radio Frequency Radiation.*

The radiated output of this device is far below the FCC radio frequency exposure limits. Nevertheless, the device shall be used in such a manner that the potential for human contact during normal operation is minimized. When connecting an external antenna to the device, the antenna shall be placed in such a manner to minimize the potential for human contact during normal operation.

This equipment has been tested and found to comply with the limits for a Class B digital device, pursuant to part 15 of the FCC Rules. These limits are designed to provide reasonable protection against harmful interference in a residential installation.

This equipment generates, uses and can radiate radio frequency energy. If this equipment does cause harmful interference to radio or television reception, which can be determined by turning the equipment off and on, the user is encouraged to try and correct the interference by one or more of the following measures:

However, there is no guarantee that interference will not occur in a particular installation. If this equipment does cause harmful interference to radio or television reception, which can be determined by turning the equipment off and on, the user is encouraged to try to correct the interference by one or more of the following measures:

- Reorient or relocate the receiving antenna
- Increase the separation between the equipment and receiver Connect the equipment into an outlet on a circuit different from that to which the receiver is connected
- Consult the dealer or an experienced computer technician for help

FCC RF Radiation Exposure Statement:

- This Transmitter must not be co-located or operating in conjunction with any other antenna or transmitter.
- This equipment complies with FCC RF radiation exposure limits set forth for an uncontrolled environment.
- This equipment should be installed and operated with a minimum distance of 0mm between the radiator and your body.
- **Caution!**
- Any changes or modifications not expressly approved by the party responsible for compliance could void the user's authority to operate the equipment.

- **Antennas**

- Only use the supplied antenna. Unauthorized antennas, modifications or change to the antennas could violate FCC regulations and void the user's authority to operate the equipment.
- For operation within 5.15 ~5.25GHz /5.25 ~5.35GHz/5.47 ~5.725GHz frequency range, it is restricted to indoor operations to reduce any potential for harmful interference to co-channel Mobile Satellite System (MSS) operations. The band from 5600-5650MHz will be disabled by the software during the manufacturing and cannot be changed by the end user. This device meets all the other requirements specified in Part 15E, Section 15.407 of the FCC Rules.
- The availability of some specific channels and/or operational frequency bands are country dependent and are firmware programmed at the factory to match the intended destination. The firmware setting is not accessible by the end user.

FCC ID : M82-DLM8110WL

Technical Support and Assistance

1. Visit the AdvantechDLoG website at <http://support.advantech.com> where you can find the latest information about the product.
2. Contact your distributor, sales representative, or Advantech's customer service

center for technical support if you need additional assistance. Please have the following information ready before you call:

- Product name and serial number
- Description of your peripheral attachments
- Description of your software (operating system, version, application software, etc.)
- A complete description of the problem
- The exact wording of any error messages

Safety Instructions

Use the following safety guidelines to help protect yourself and DLT-M8110

- Do not attempt to service the DLT-M8110 yourself. Always follow installation instructions closely.
- Be sure that nothing rests on the AC adapter's power cable and that the cable is not located where it can be tripped over or stepped on.
- Do not cover the AC adaptor with papers or other items that will reduce cooling; also, do not use the AC adapter while it is inside a carrying case.
- Use only the AC adapter, power cord, and batteries that are approved for use with this DLT-M8110. Use of another type of battery or AC adapter may cause risk of fire or explosion.
- If you use an extension cable with the AC adapter, ensure that the total ampere rating of the products plugged in to the extension cable does not exceed the ampere rating of the extension cable.
- When you move the DLT-M8110 between environments with very different temperature and/or humidity ranges, condensation may form on or within the DLT-M8110. To avoid damaging the device, allow sufficient time for the moisture to evaporate before using the DLT-M8110.
- When you disconnect a cable, pull on its connector or on its strain relief loop, not on the cable itself. As you pull out the connector, keep it evenly aligned to avoid bending any connector pins. Also, before you connect a cable make sure both connectors are correctly oriented and aligned.

Battery Safety

RTC Battery Caution

RISK OF EXPLOSION IF BATTERY IS REPLACED BY AN INCORRECT TYPE.
DISPOSE OF USED BATTERIES ACCORDING TO THE INSTRUCTIONS.

- Do not place the battery incorrectly as this may cause danger of explosion.
- Dispose of used batteries according to the manufacturer's instructions.
- Do not dispose of batteries in a fire. They may explode. Check with local authorities for disposal instructions.

Battery Pack Caution

- The battery used in this device may present a risk of fire or chemical burn if mistreated. Do not disassemble, heat above 60°C, or incinerate. Replace battery with Li-ion 7.2V 3800mAh and Cell SANYO only. Use of another battery may present a risk of fire or explosion.
- Dispose of used batteries according to local disposal regulations. Keep away from children. Do not disassemble and do not dispose of in a fire.

Battery Charge Notice

It is important to consider the environment temperature whenever you are charging the Lithium-Ion battery pack. The process is more efficient at normal room temperature or slightly cooler. It is essential that you charge batteries within the stated range of 0°C to 45°C. Charging batteries outside of the specified range could damage the batteries and shorten their charging life cycle.

Storage and Safety Notice

Although charge Lithium-Ion batteries may be left unused for several months, their capacity may be depleted due to the build up of internal resistance. If this happens they will require recharging prior to use. Lithium-Ion batteries may be stored at temperatures between -20°C to 60°C, however they may be depleted more rapidly at the high end of this range. It is recommended to store batteries within normal room temperature ranges.



Chapter 1

Rugged and Ready to Go

Congratulations on your purchase of the DLT-M8110 Vehicle Mounted Terminal. This product combines rugged design with reliable performance and powerful functionality to best suit all your needs, in a wide range of working conditions. This user manual outlines all you need to know to set up and use your DLT-M8110. If you have any further questions or queries, contact our technical support team via our website:

<http://www.advantechdlog.com/>

Symbols Used in this Manual


	Denotes information that must be observed. Failure to do so may result in personal harm or damage to the product.
<p>Note!</p> 	Denotes information that must be observed. Failure to do so may result in personal harm or damage to the product.

Product Features

- Powered by Intel® Haswell Bay Trail-I series E3827 CPU inside
- 10.4" XGA display with P-CAP and Resistive touch as optional
- 8 user programmable function keys
- Hot-swappable battery provides up to 8 hours operation.
- Built-in camera, 2D barcode scanner and WiFi
- Fully rugged design with MIL-STD-810F and IP65 certified.

Package Contents

Ensure all the following items are present when you receive your DLT-M8110. If any of these items are missing, contact your vendor immediately.

<p>Note!</p> 	Screens used in this manual are for illustrative purposes only. Actual screens may vary depending on your product version.
---	--

- DLT-M8110 Vehicle mounted terminal

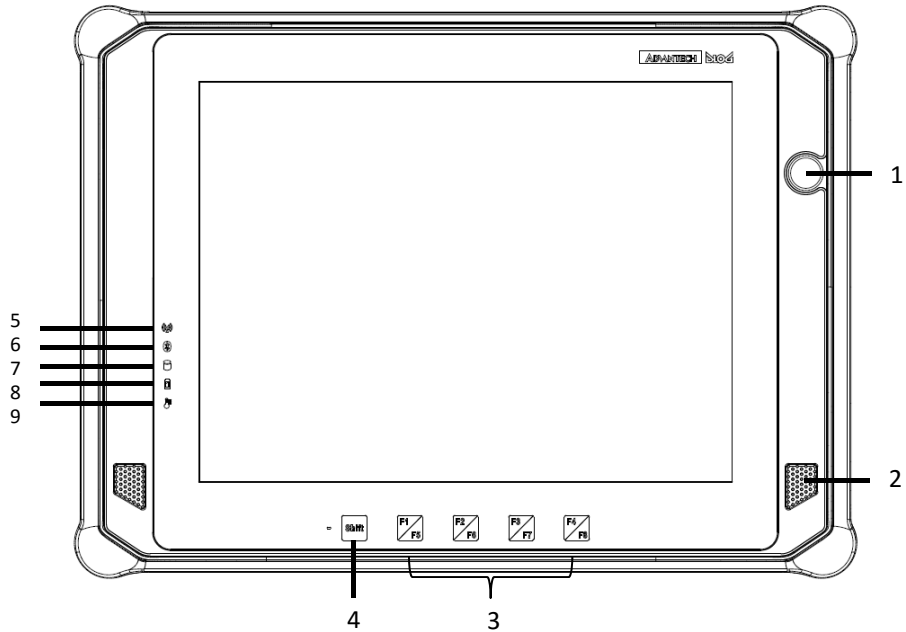
- AC power adaptor
- 2x slim Batteries
- Safety notes
- Quick start guide

Optional Accessories

- Desk docking station
- Vehicle docking station
- Big battery
- Battery charger

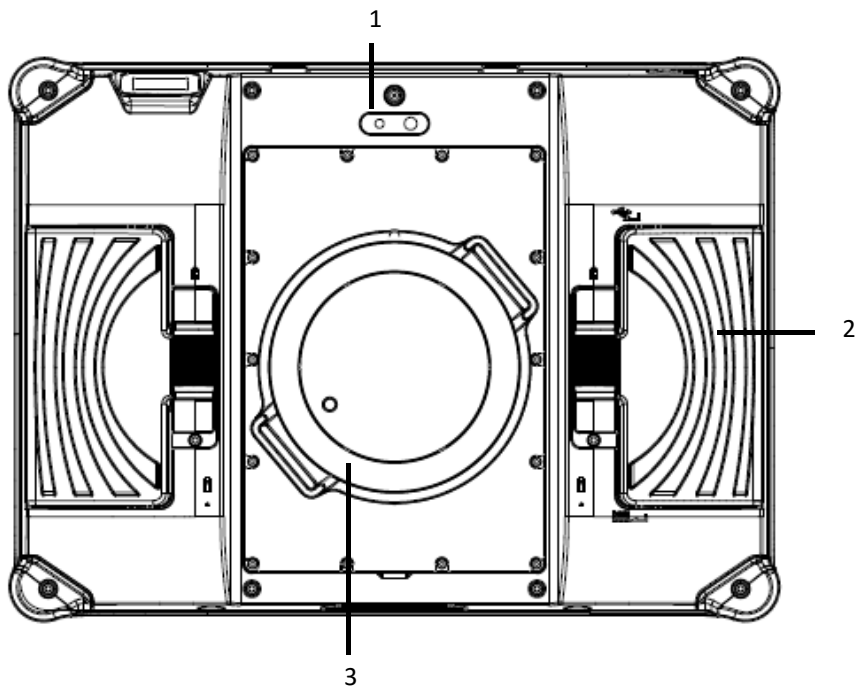
Exploring the DLT-M8110

Front View



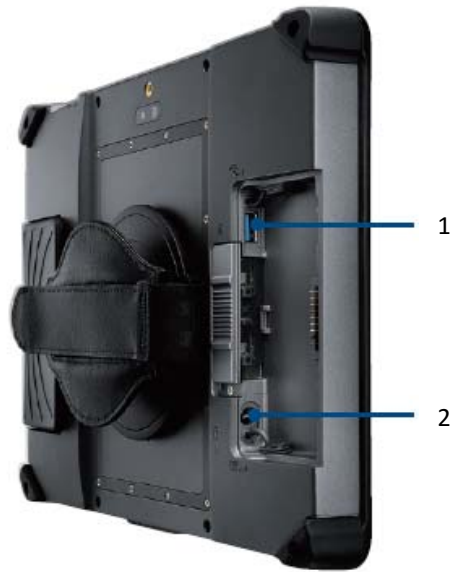
No.	Component
1	Barcode/camera trigger button
2	Speaker
3	8 programmable function keys
4	Shift LED
5	WiFi LED
6	Bluetooth LED
7	Storage LED
8	Power LED
9	Temperature LED

Rear View



No.	Component
1	Camera
2	Battery
3	Hand strap

Side Views



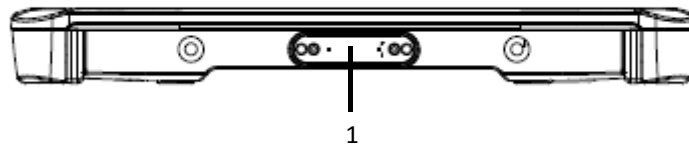
No.	Component
1	USB 3.0
2	DC-in connector

Top View



No.	Component
1	Barcode scanner
2	Power on/off button

Bottom View



No.	Component
1	Docking connector

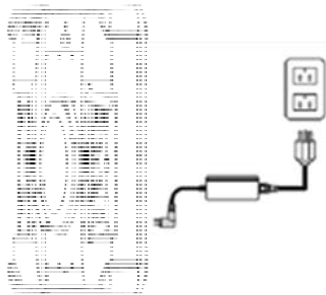
Chapter 2

Getting Started & Making Connections

Connecting the Power

Before using your DLT-M8110, you must fully charge the battery. Connect the power adapter as shown and leave to charge for:

- A minimum of 2 hours when using thin battery
- A minimum of 5 hours when using thick battery



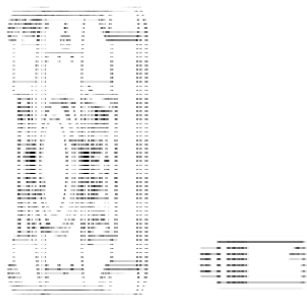
You also can use vehicle docking, office docking or battery charger to charge the battery.

Insert batteries on device

When battery is fully charged, insert 2 batteries on device.

Connecting USB Devices

You can connect peripheral devices, such as a USB keyboard and mouse, as well as other wireless devices using the USB ports on the PWS-870. PWS-870 has one USB 3.0 port on the both side and one USB 2.0 port on the left side.



Chapter 3

Turning on & Controlling the DLT-M8110

Turning On

1. Press and hold the power button to turn on the DLT-M8110.



Controlling the DLT-M8110

Using the Touch Screen

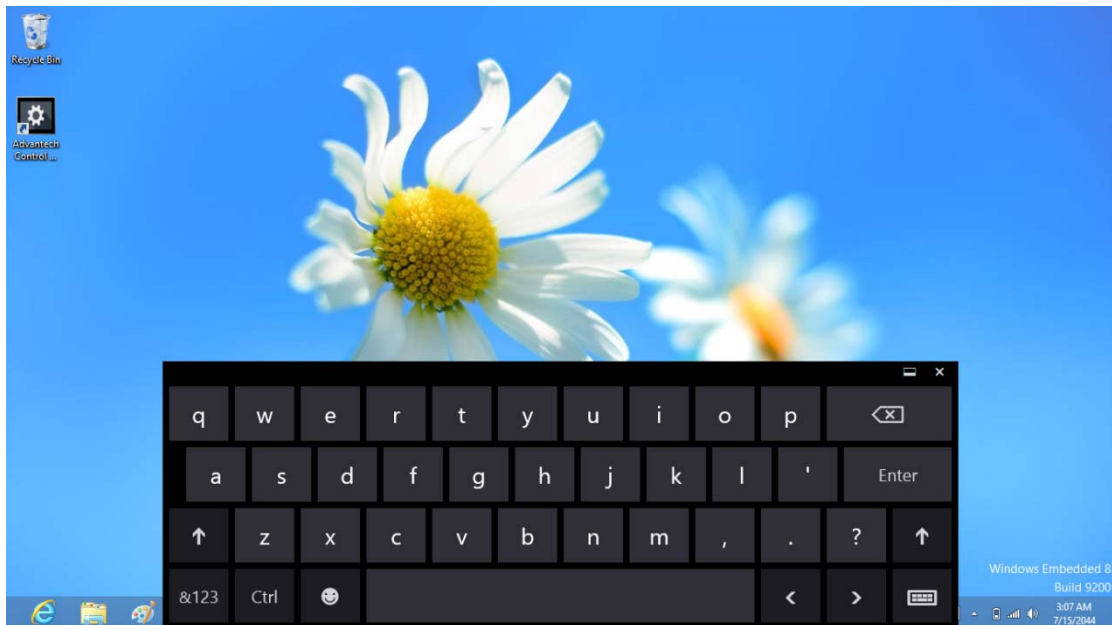
The DLT-M8110 is equipped with touch screen technology, for ease of use when you are on the go. Simply tap the screen with your finger to select icons and run applications.

Using the Tap Function

- To emulate a left click single tap the screen once.
- To emulate a right click tap and hold the screen.
- To emulate a double click, tap the screen twice.

Using the On-Screen Keyboard

Tap keyboard icon to bring up the on-screen keyboard.



Use your finger to tap and enter letters, numbers and symbols as you would with a regular keyboard.

Making WiFi Connection

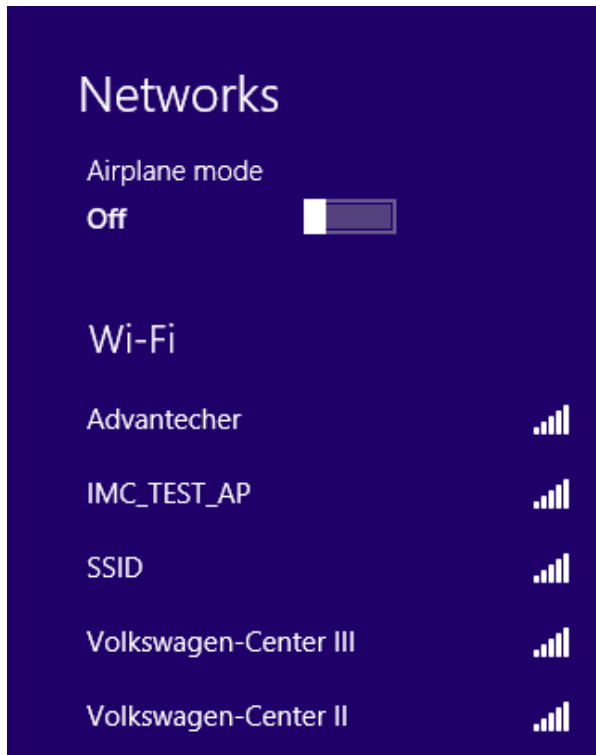


WiFi access requires a separate purchase of a service contract with a wireless service provider. Contact a wireless service provider for more information.

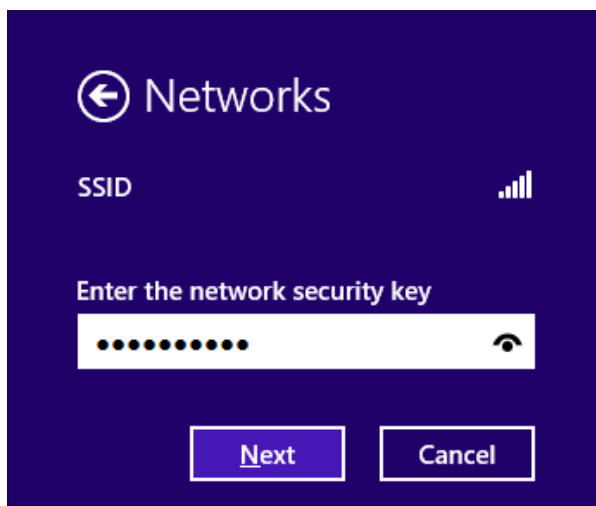
The DLT-M8110 comes pre-loaded with WLAN module, you can send and receive signals to a WiFi network then synchronize files.

A wireless network can be added either when the network is detected or by manually entering settings information. Before doing these steps, determine if authentication information is needed.

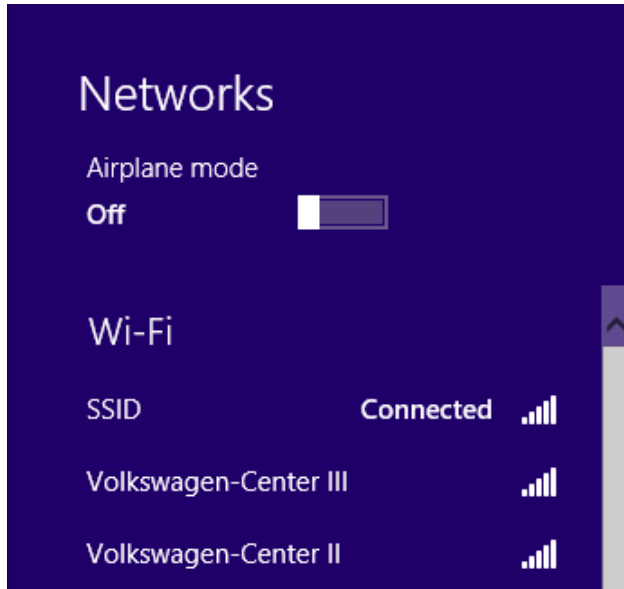
1. Click the wireless connection icon in the notification area.
2. Turn on WiFi and select one of the wireless connections and click Connect.



3. You are prompted to enter a Security key for secure access. Contact the network administrator for this key.



4. Enter the required Security key and then tap Next to connect.
5. The wireless connection is negotiated and you see the following screen.



The wireless connection icon in the notification area shows a connected status whenever a wireless connection is present.



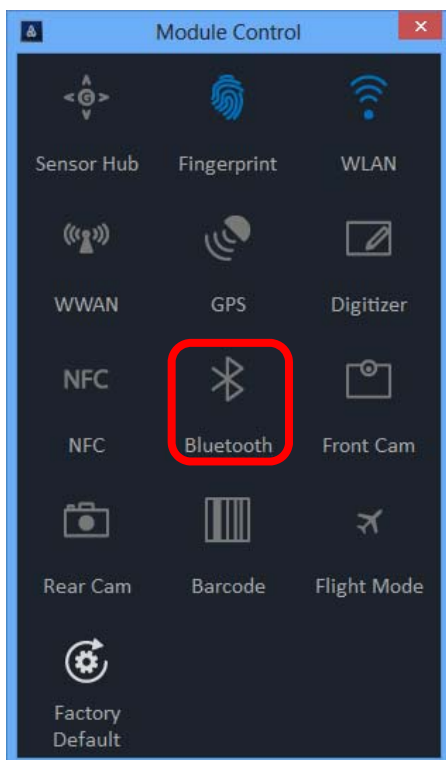
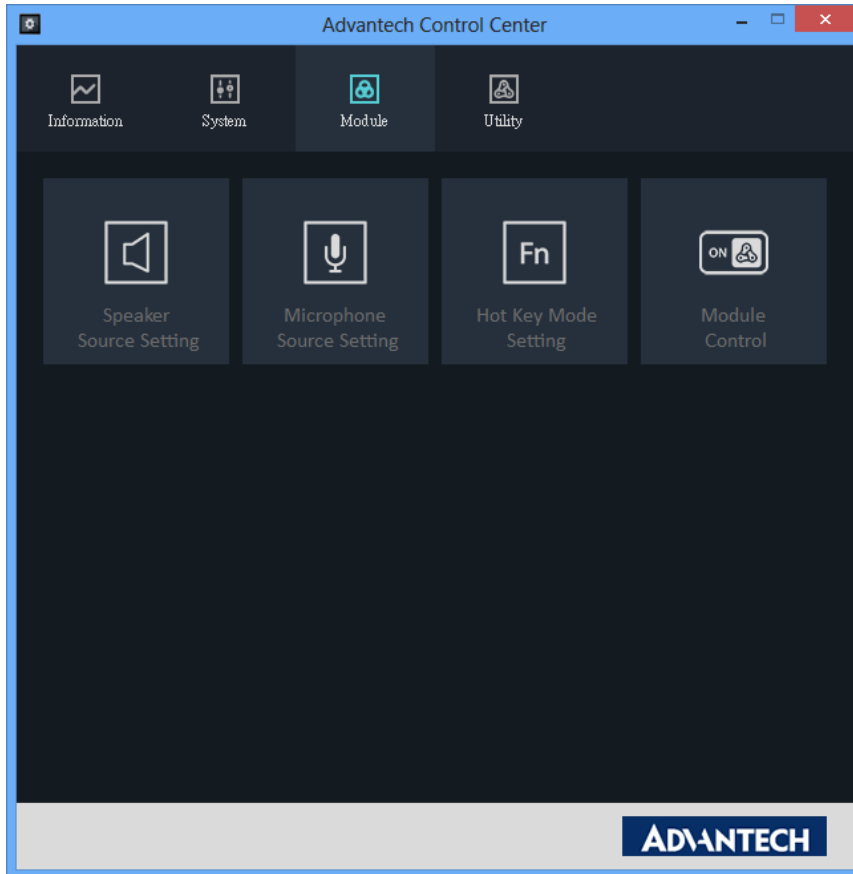
Making Bluetooth Connections

The DLT-M8110 comes with built-in Bluetooth functionality that allows you to connect and communicate with other Bluetooth-enabled devices.

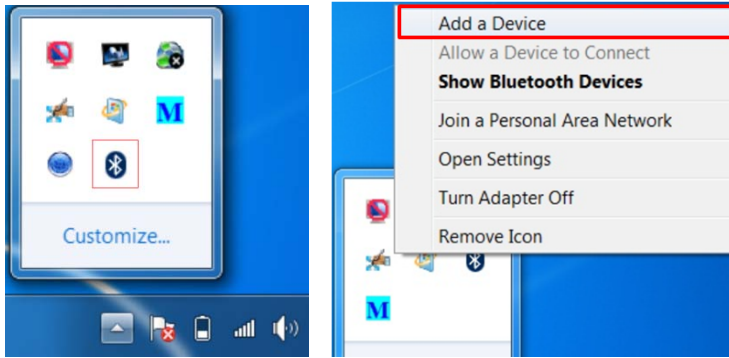
Setting Up Bluetooth

Follow these instructions to set up a Bluetooth connection.

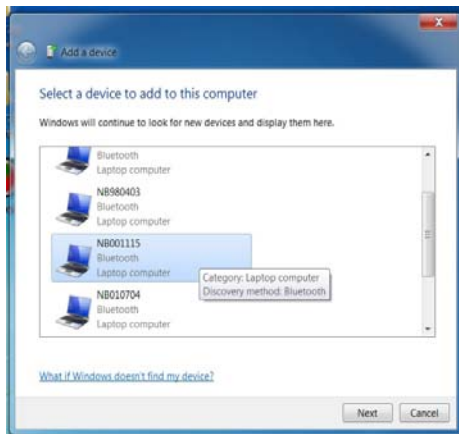
1. Bluetooth is turned off in default setting, so if you want to connect to a Bluetooth device, please make sure the Bluetooth is turned on in Tap Module Control in Module page and turn on the Bluetooth



2. In notification area, tap Bluetooth logo and select Add a Device.



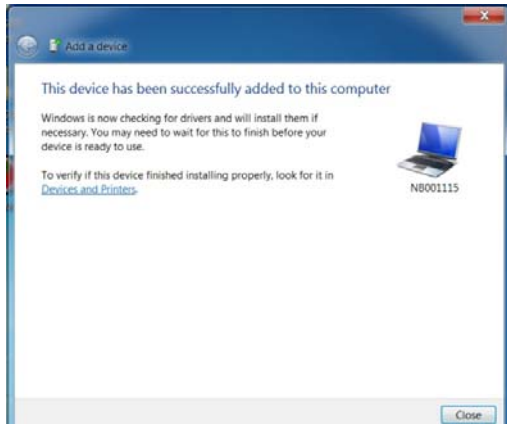
3. Select Bluetooth device and tap Next to add Bluetooth device.



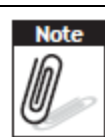
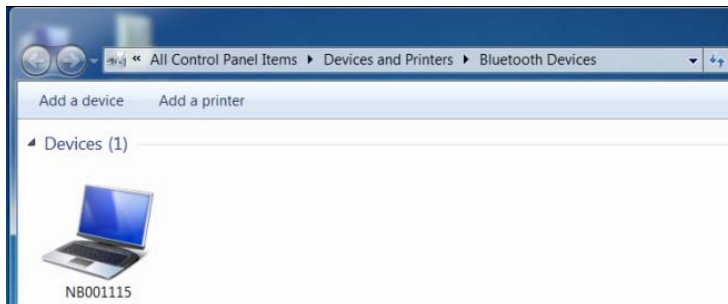
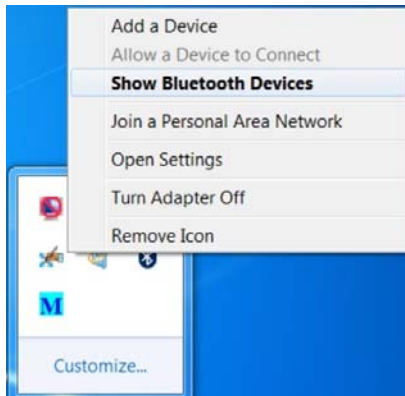
4. Select Next for both DLT-M8110 and the blue tooth device after passkey is confirmed.



5. The Bluetooth device is successfully added into DLT-M8110.



6. To view Bluetooth device added, tap Show Bluetooth Devices.



It is recommended that you use a passkey to prevent unauthorized access to your DLT-M8110.

Chapter 4

Using MDevice utility

MDevice for DLT-M8110

MDevice is a useful tool for user to get DLT-M8110 basic system information and control DLT-M8110 easily

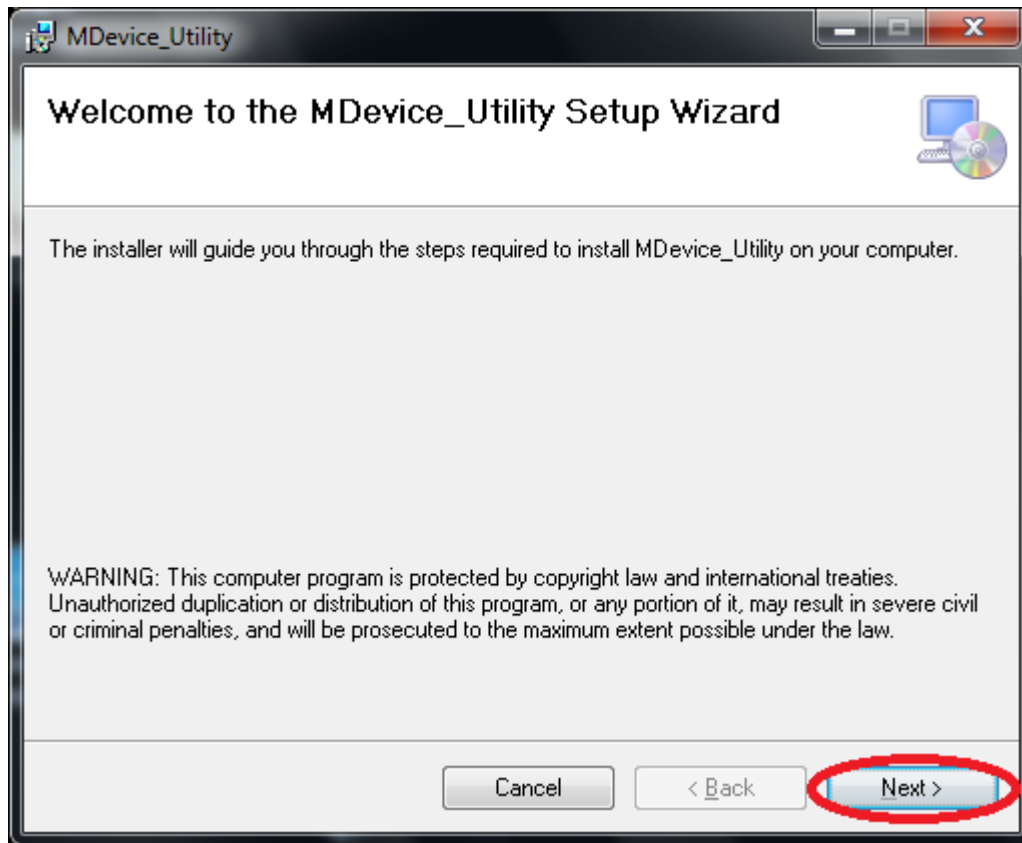
Install MDevice Utility

By launching the installer (SetupMDevice.msi), user can simply install **MDevice**

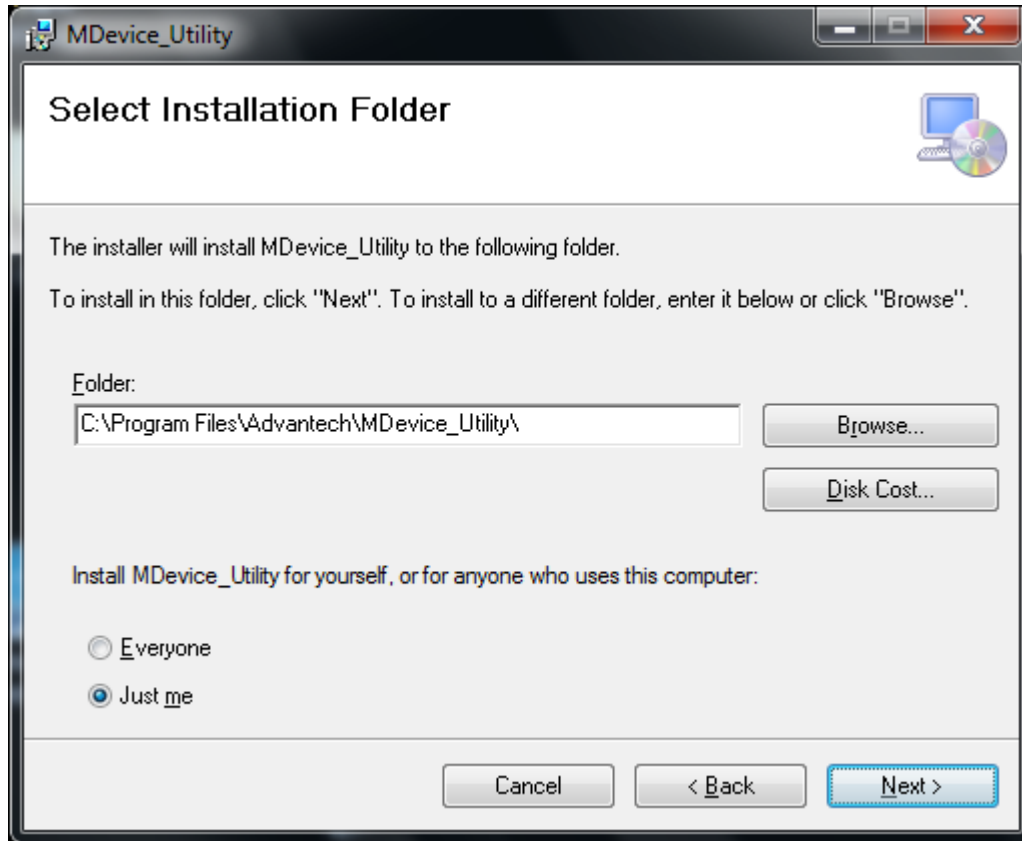
Utility.



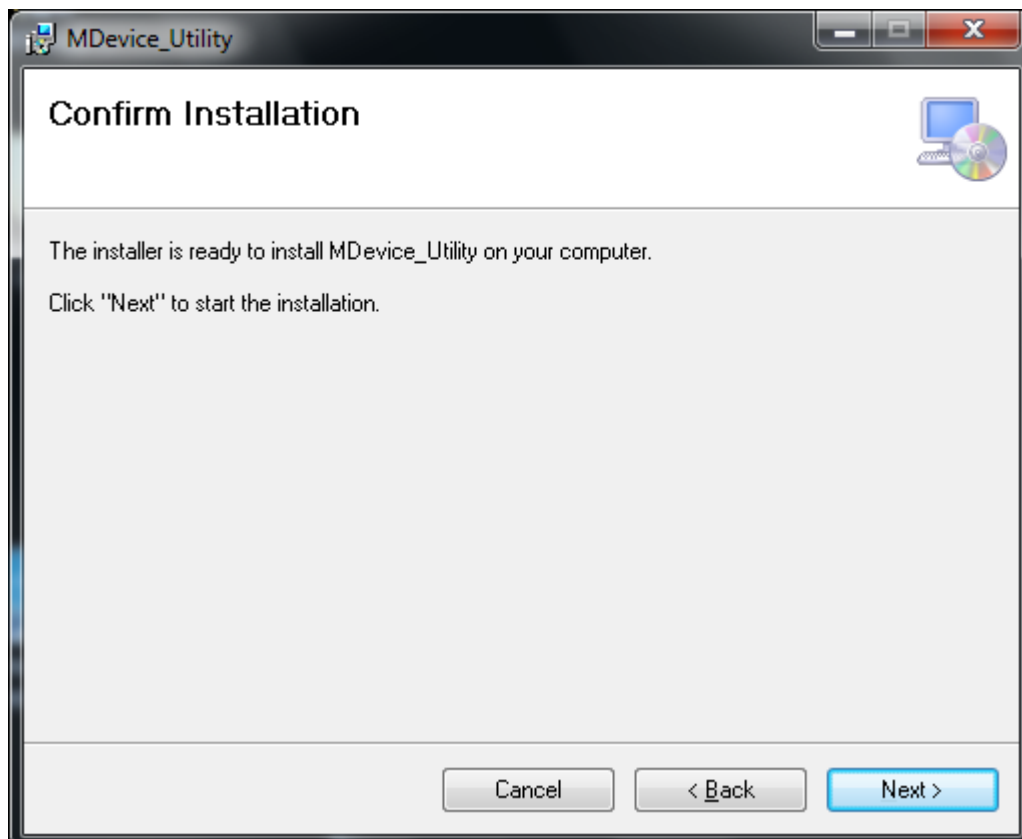
1. Double Click installer to trigger install process
2. Click Next



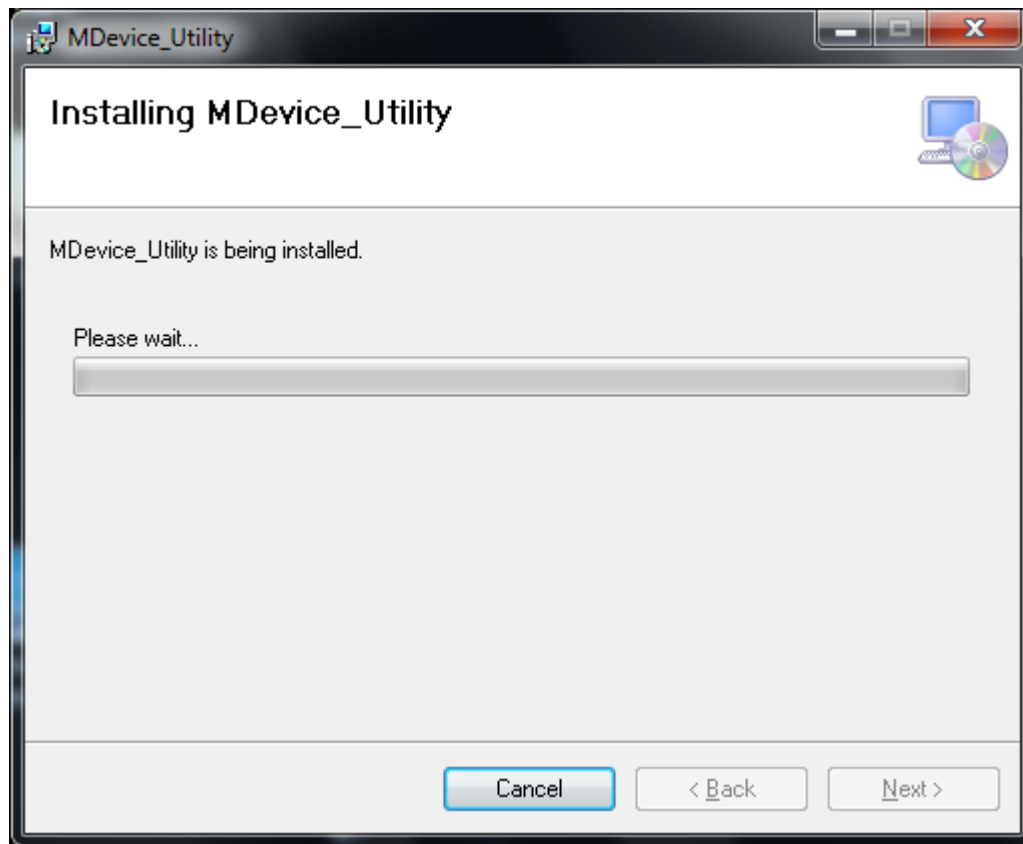
3. Modify install folder if necessary and set who can use this tool; then click Next again



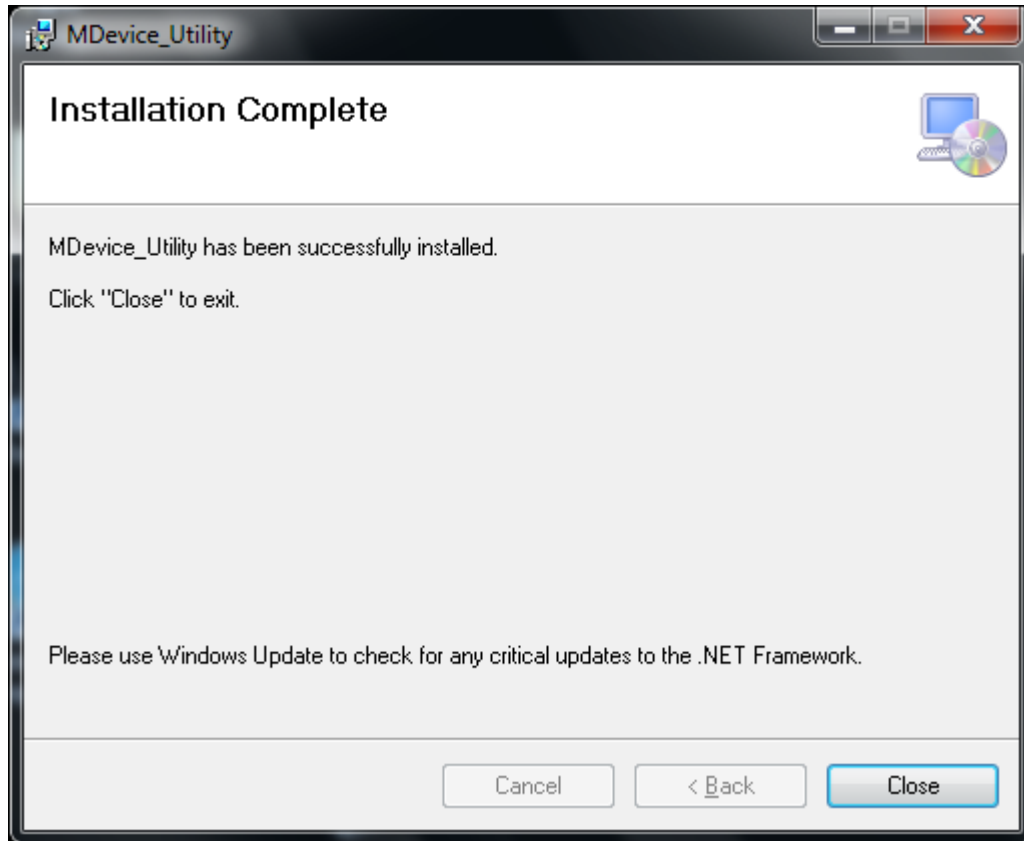
4. Click Next



5. The installation is processing, please wait till it finished.

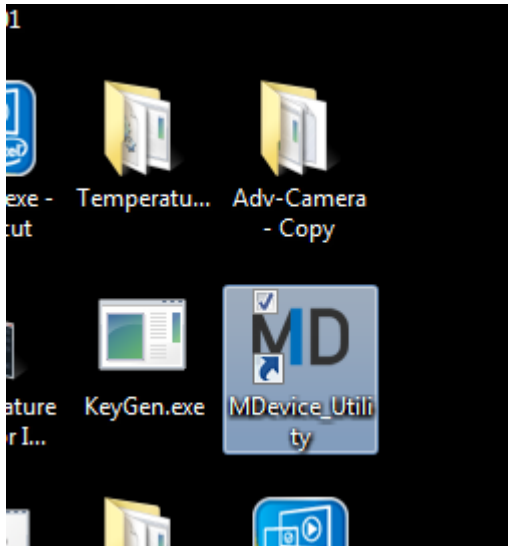


6. Install Completely

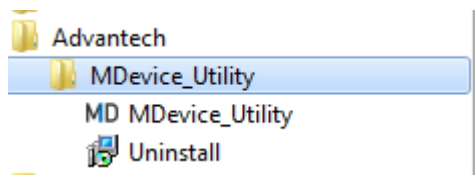


After install ...

1. Every time device boots up, MDevice Utility will be launched automatically.
2. **MDeviceUtility** link will appear in Desktop



3. **MDevice_Utility** and **Uninstall** links will appear in program menu



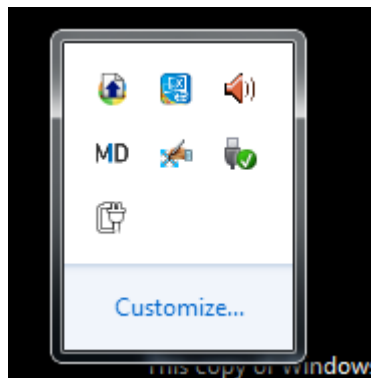
Launch MDevice Utility

By double clicking the **MDevice_Utility** link in Desktop or clicking the link in user program menu, user can launch the utility manually.

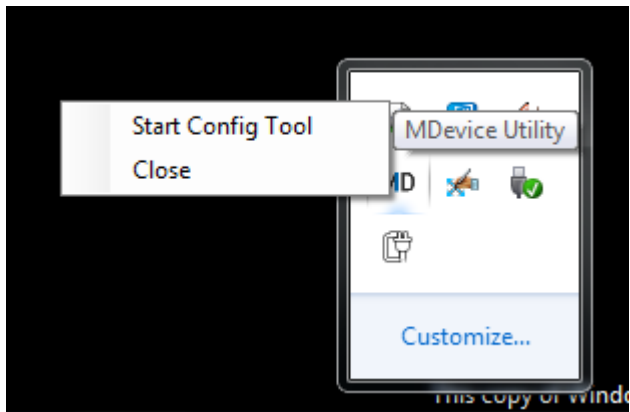
The utility will run at background. User can start to configure the utility or terminate it by bellow steps:

1. Start

Step1. Right Click **MD** icon in System tray:

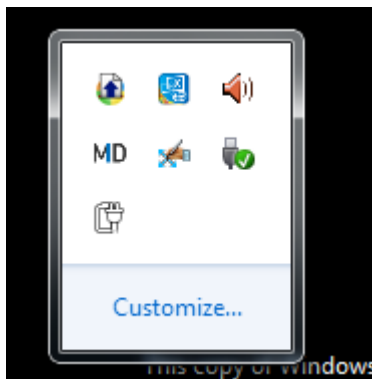


Step2. Choose **Start Config Tool**

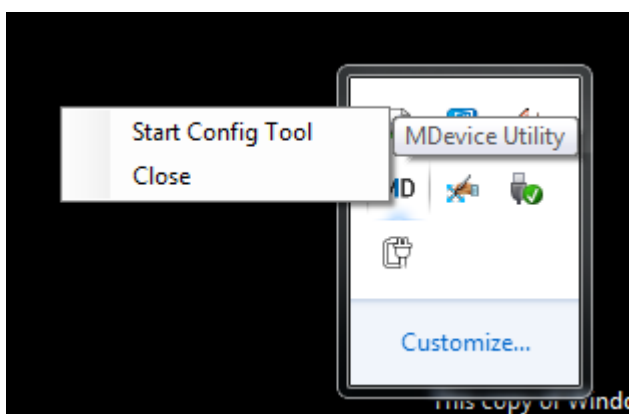


2. Terminate the utility

Step1. Right Click icon in System tray:



Step2. Choose **Close**



Login



Log-in

Enter ADMIN/SERVICE password

or

In this form, user can decide which mode the utility will be.

For **User mode**, user can simply click "Read only without password".

For **Administrator mode**, user should input the ADMIN password and click "OK".

For **Service mode**, user are asked to input a one-time password, which generated by Key-Generate tool.

Login Permission

There are three modes in MDevice Utility.

Use Mode: User is able to view the whole setting items, but not allowed to change the setting.

Corresponding icons:



Administrator Mode: User is able to view the whole setting items, but only allowed to set limited setting items. Some of the setting items are impossible to changed.

Corresponding icons:

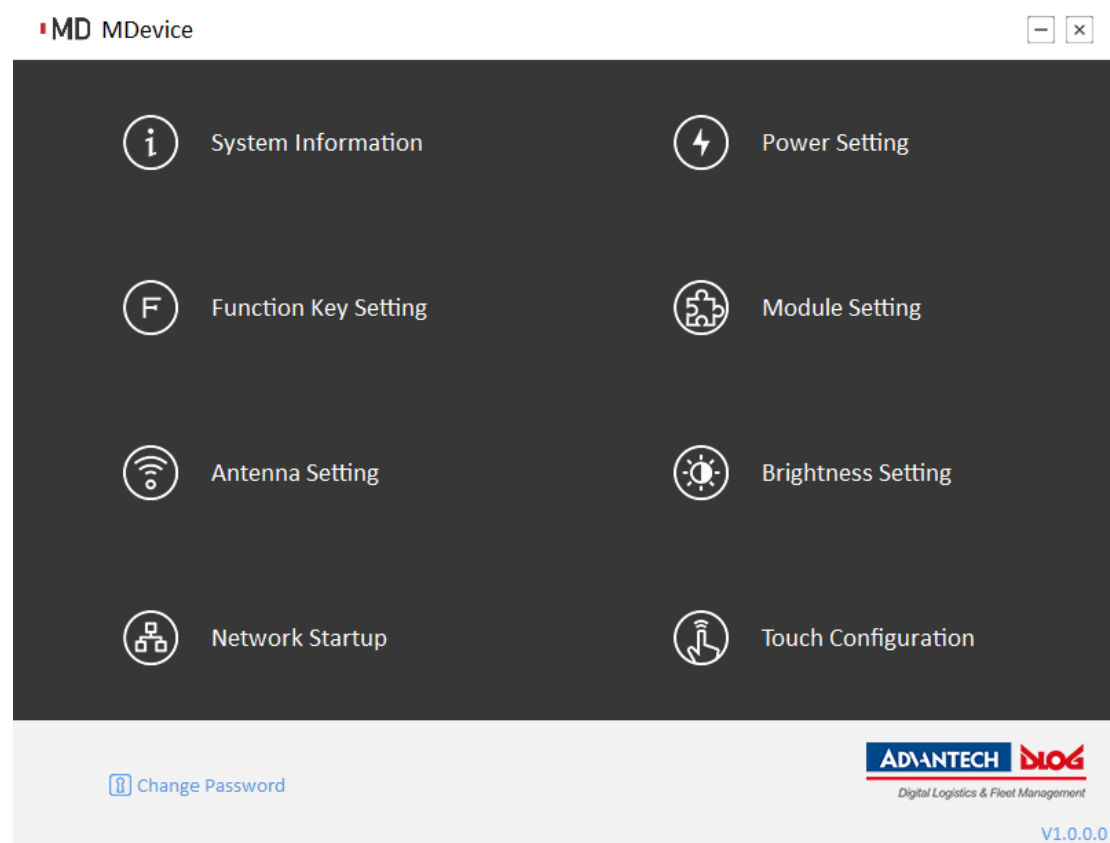
MD

Service Mode: User is able to view/modify the whole setting items.

Corresponding icons:

MD

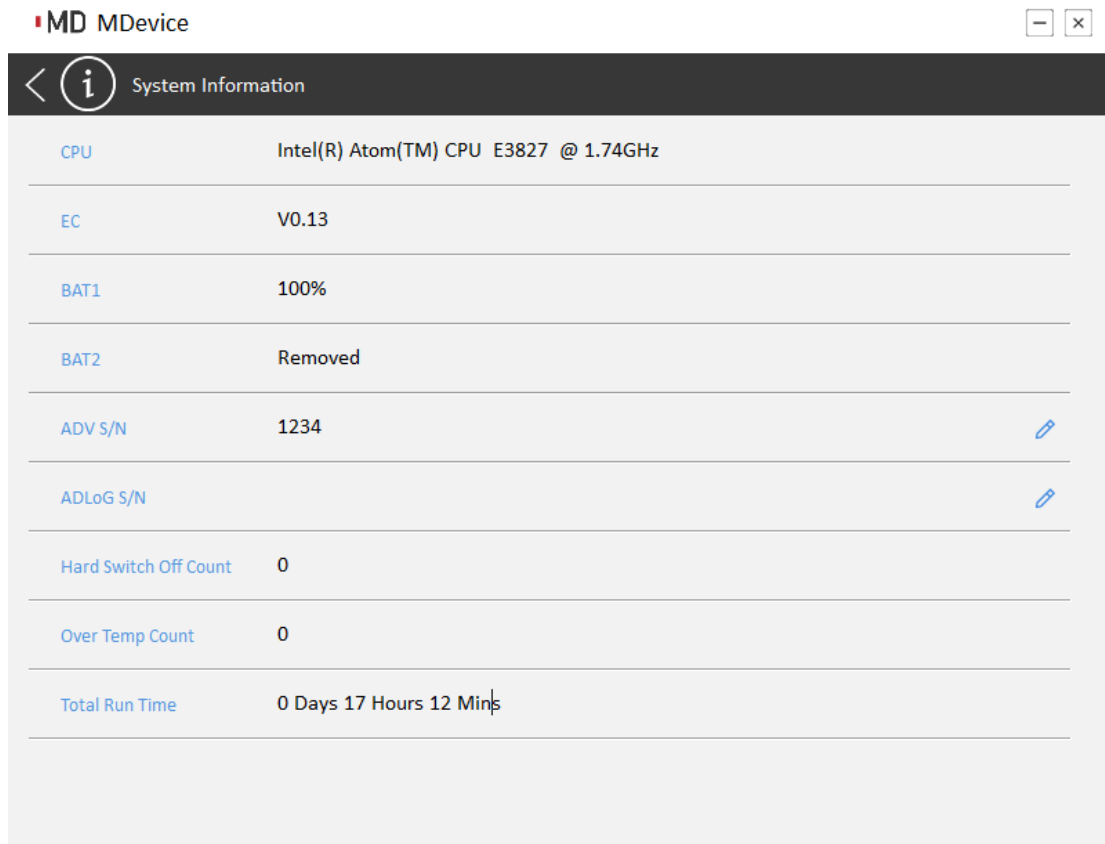
Menu



In menu form, user can go into each setting by simply click the button.



Note: **Change Password** is hidden in user mode.


System Information

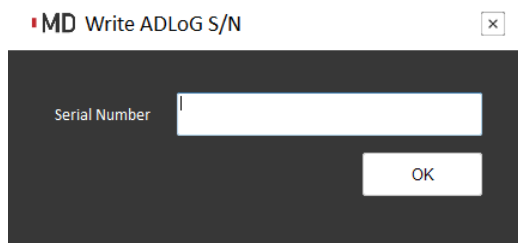


MD MDevice

System Information

CPU	Intel(R) Atom(TM) CPU E3827 @ 1.74GHz	
EC	V0.13	
BAT1	100%	
BAT2	Removed	
ADV S/N	1234	
ADLoG S/N		
Hard Switch Off Count	0	
Over Temp Count	0	
Total Run Time	0 Days 17 Hours 12 Min	

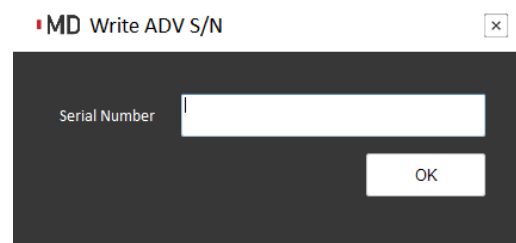
In this form, user is able to watch the system information. Only in service mode, user can click the  icon to configure the S/N.



MD Write ADLoG S/N

Serial Number



OK



MD Write ADV S/N


Serial Number

OK

And then, user can back to menu page by clicking  or .

Power Setting

MD MDevice - x

<  Power Setting

Switch-On	<input checked="" type="checkbox"/> Power Button	<input checked="" type="checkbox"/> Ignition On
Switch-Off	<input checked="" type="checkbox"/> Power Button	<input checked="" type="checkbox"/> Ignition Off
Screen Display	<input checked="" type="checkbox"/> Block input if ignition is off	<input checked="" type="checkbox"/> Show counter if ignition is off
Time Delay Seconds	Ignition Off Delay <input type="text" value="5"/>	Hard Off Delay <input type="text" value="60"/>
Battery Capacity Threshold	Switch-On <input type="text" value="10"/>	Switch-Off <input type="text" value="7"/>
Sensor Temperature Threshold (°C)	Switch On	Switch Off
Power Input	<input type="text" value="-25"/>	<input type="text" value="70"/>
Charger	<input type="text" value="-25"/>	<input type="text" value="70"/>
DDR Slot	<input type="text" value="-25"/>	<input type="text" value="70"/>
mSATA	<input type="text" value="-25"/>	<input type="text" value="70"/>
CPU	<input type="text" value="-25"/>	<input type="text" value="70"/>

In this form, user can configure the power setting.

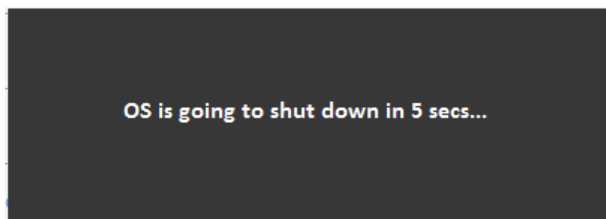
Switch-On: To configure which source is allowed to turn on the device.

Switch-Off: To configure which source is allowed to turn off the device.

Screen Display: To configure the behavior while receiving ignition off event.

Block input: While receiving ignition off event, all the inputs (ex. touch, keyboard, mouse) will be blocked.

Show counter: While receiving ignition off event, utility will show a count down dialog to notify the user.





Time Delay Seconds: To configure the delay seconds.

Ignition Off Delay: The waiting time to trigger a OS shutdown event while ignition off.

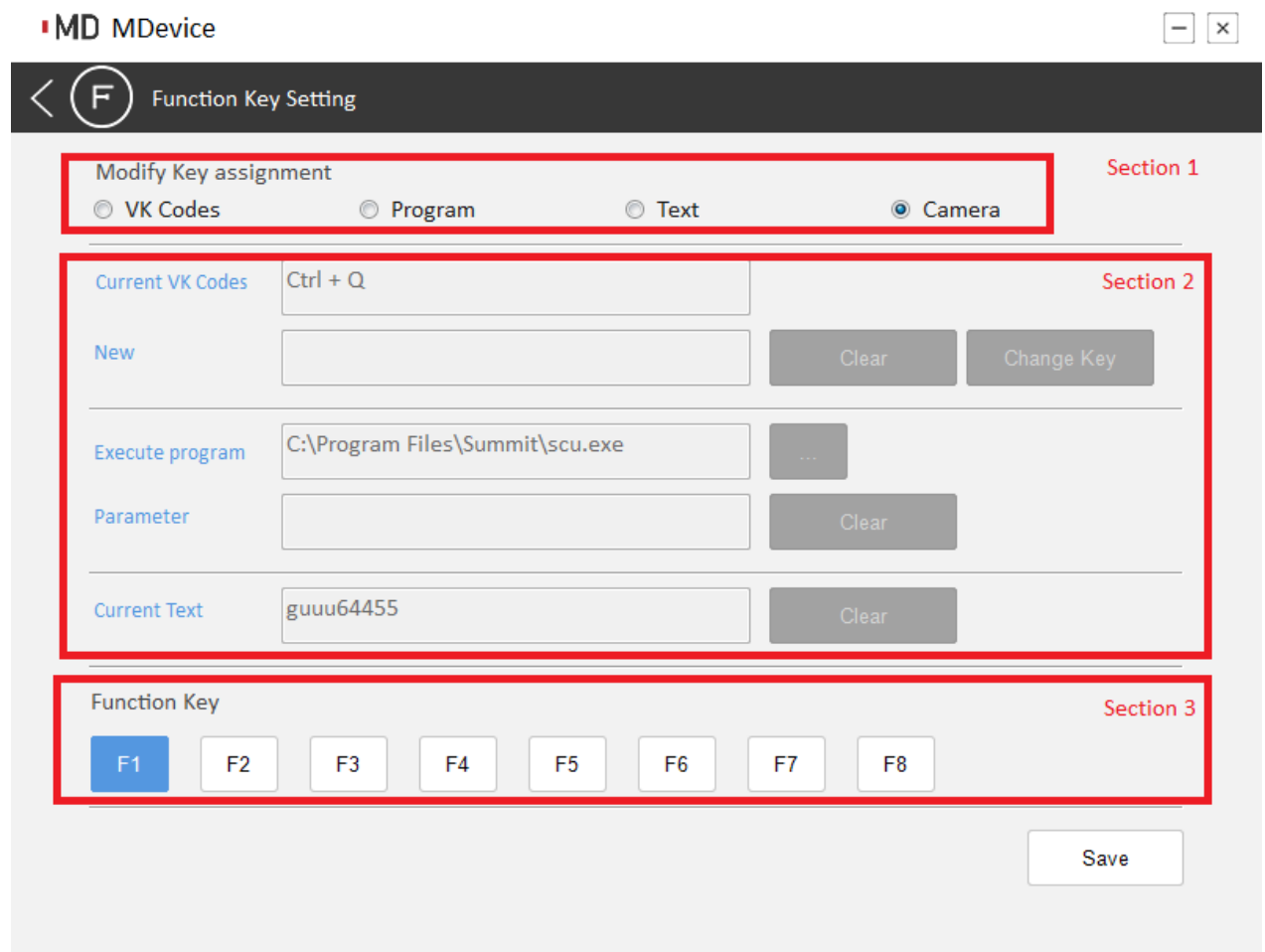
Hard Off Delay: The waiting time to trigger a power shutdown event while ignition off.

Battery Capacity Threshold : To configure the percentage threshold of battery for switch-on/off event.

Sensor Temperature Threshold : To configure the temperature threshold of each sensor for switch-on/off event.

And then, user can back to menu page by clicking  or .

Function Key Setting



MD MDevice

Function Key Setting

Modify Key assignment Section 1

VK Codes Program Text Camera

Current VK Codes Section 2

New

Execute program

Parameter

Current Text

Function Key Section 3

This form is for setting or viewing the function of each function key.

In Section 1:

User can switch the type of function. There are 4 types of function user can set:

VK codes: The function key which is set to this type will send virtual key codes which supports max to 3 combination of keys.

Program: The function key which is set to this type will trigger a application.

Text: The function key which is set to this type will send a plain text.

Camera: The function key which is set to this type will launch the camera application.

In Section 2:

User can set the details of the function in this section.

In Section 3:

User can switch the function key.

Module Setting

The screenshot shows the 'Module Setting' interface. At the top left, there is a back arrow and a gear icon. The title 'Module Setting' is centered. Below the title, there are five rows of settings, each with a label and a dropdown menu. The settings are: WLAN (ON), Bluetooth (ON), Camera (ON), Barcode (ON), and G-Sensor auto rotate (OFF). A 'Save' button is positioned at the bottom right of the settings area.

Setting	Value
WLAN	ON
Bluetooth	ON
Camera	ON
Barcode	ON
G-Sensor auto rotate	OFF

WLAN: Enable/Disable WiFi


Bluetooth: Enable/Disable BT

Camera: Enable/Disable Camera

Barcode: Enable/Disable Barcode

G-sensor auto rotate: Enable/Disable G-sensor auto rotate feature

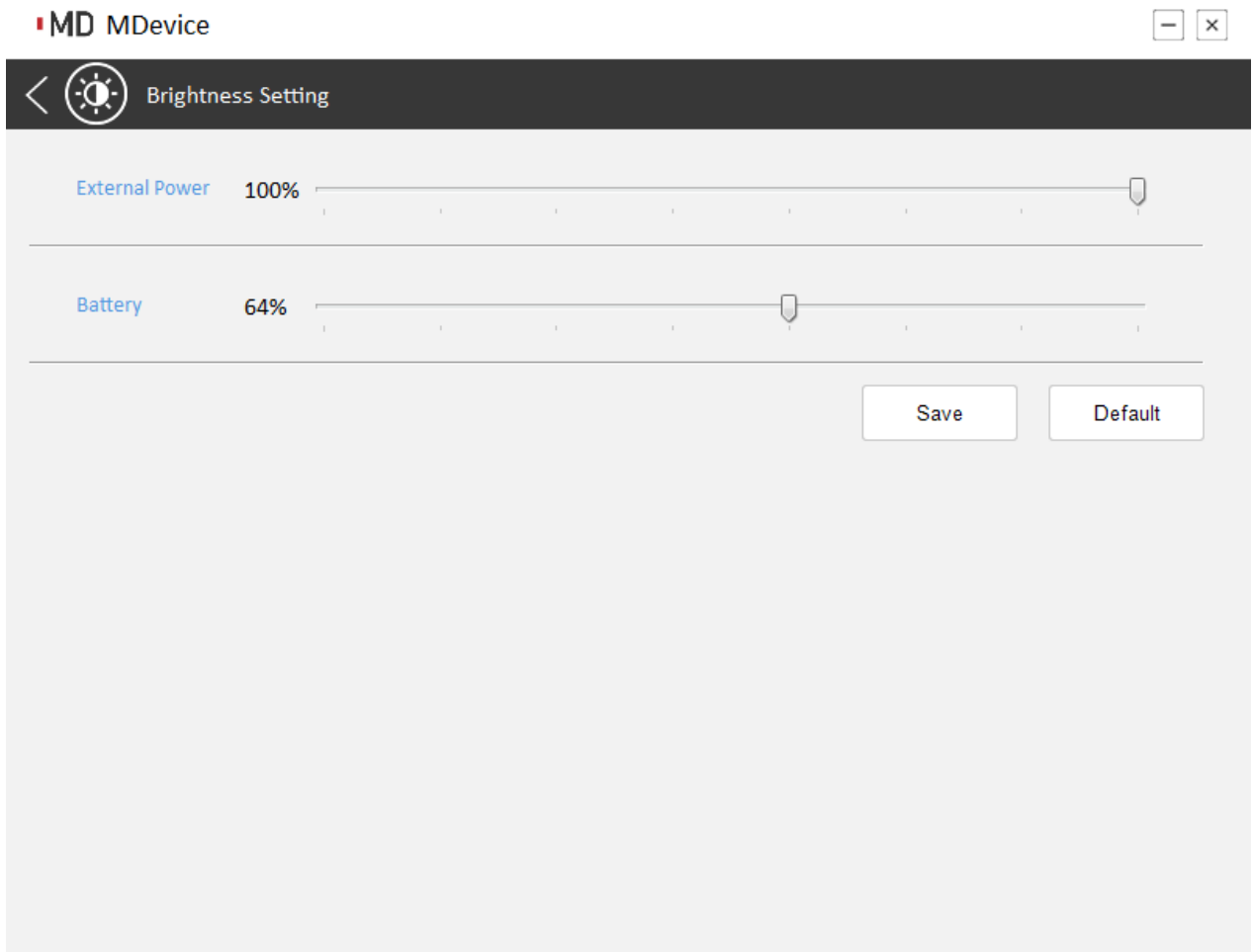
Antenna Setting

<  Antenna Setting

[Antenna switch](#) Tablet Antenna Cradle Antenna Auto

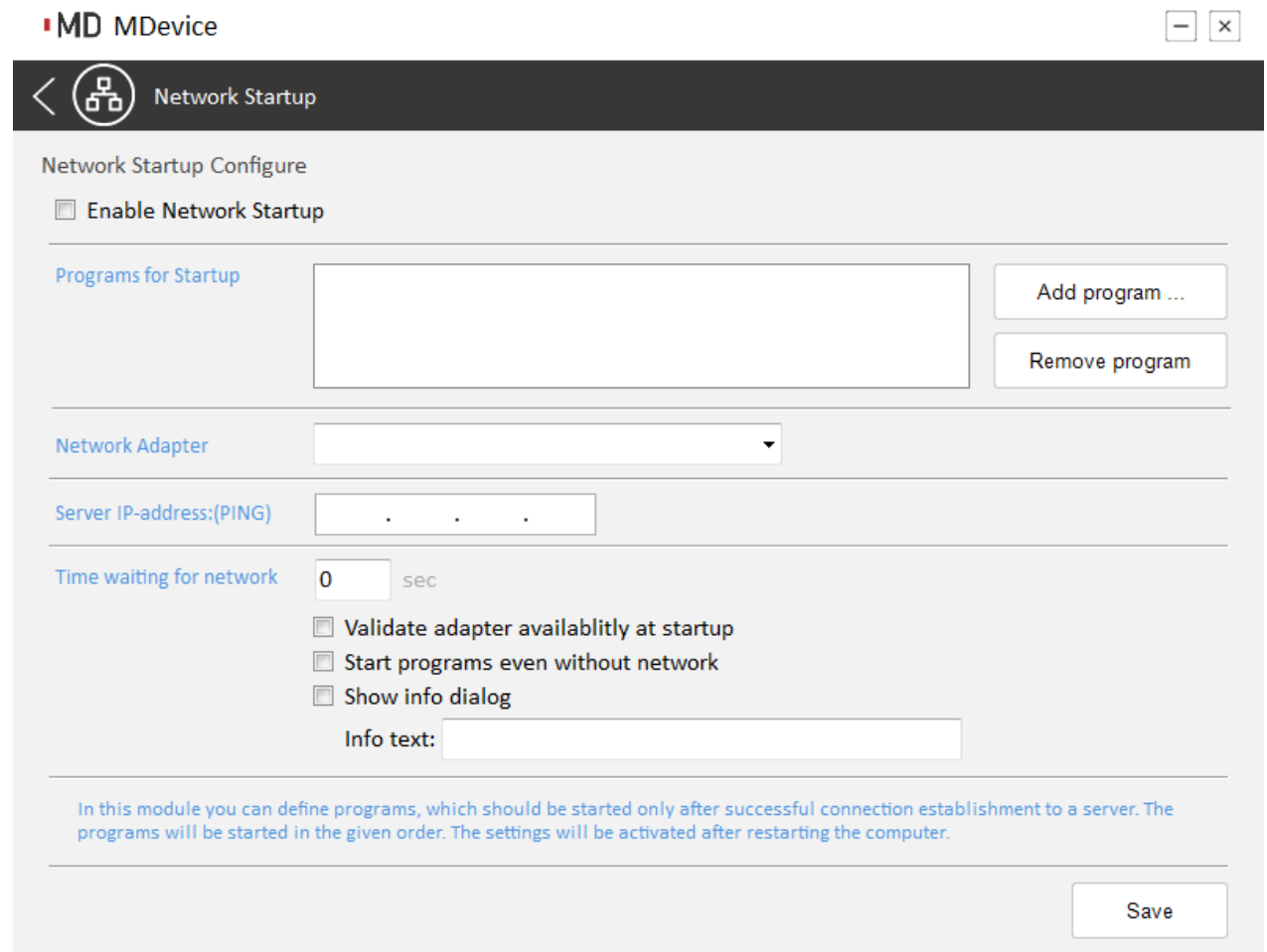
This form is for selecting Antenna.

Brightness Setting



This form is for setting brightness in external power mode or battery mode.

Network Startup



MD MDevice

Network Startup

Network Startup Configure

Enable Network Startup

Programs for Startup

Add program ...

Remove program

Network Adapter

Server IP-address:(PING)

Time waiting for network 0 sec

Validate adapter availablity at startup

Start programs even without network

Show info dialog

Info text:

In this module you can define programs, which should be started only after successful connection establishment to a server. The programs will be started in the given order. The settings will be activated after restarting the computer.

Save

Network startup feature will check the whether device is connected with server at boot-up stage and take action according to the check result.

Enable Network Startup: Checked if user want to enable this feature

Programs for Startup: It's for setting the startup program list, user can add program by clicking *Add program ...* button, or remove program by *Removed program* button.

Network Adapter: To specify a network adapter for the network checking event.

Server IP-address(PING) : It's for setting the server IP.

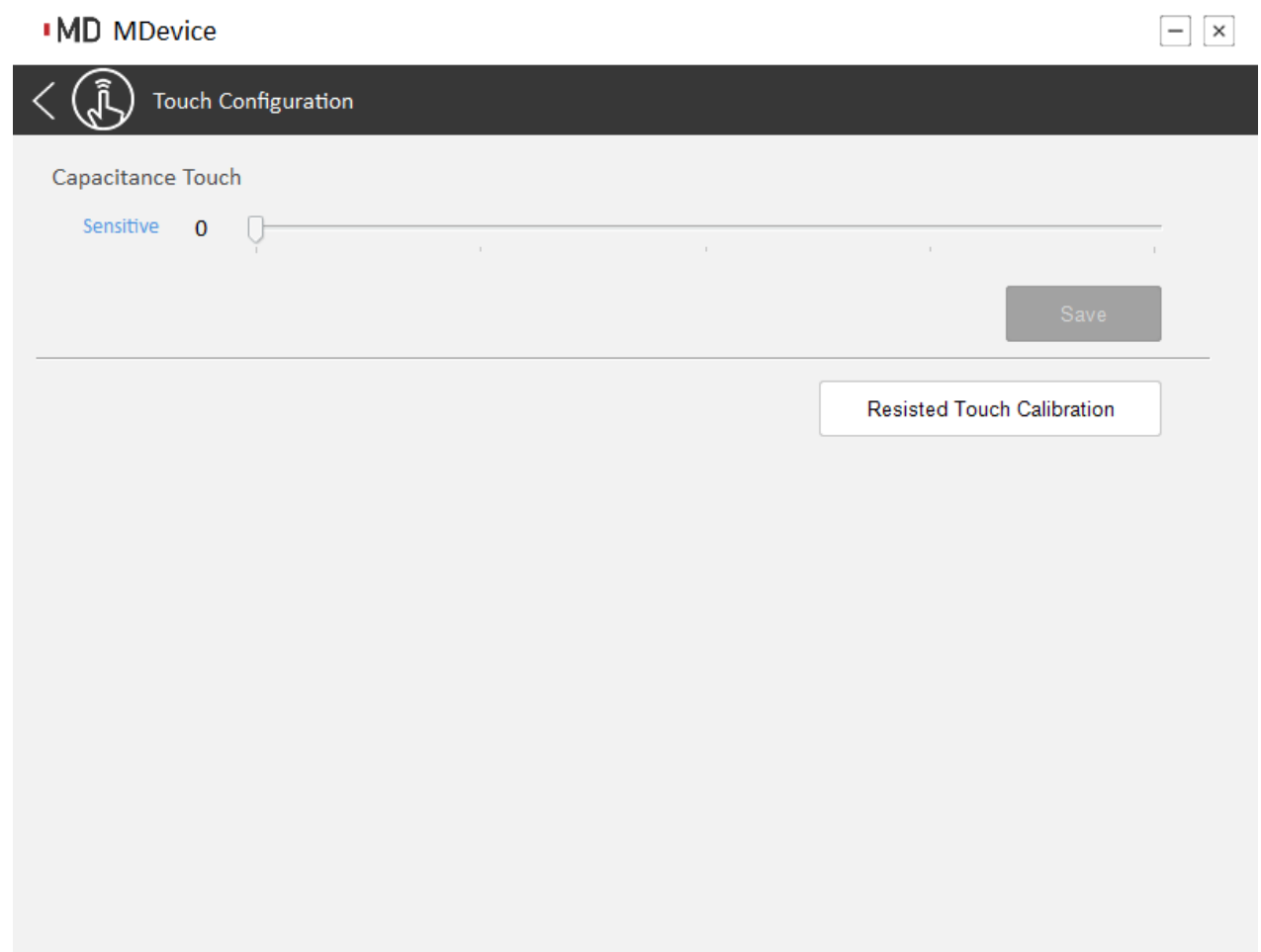
Time Waiting for network : It's for setting the waiting time for network, if devices cannot connect to server within the time limit, the check result of network is failed.

Validate adapter availability at startup: Checked if user need to check the adapter as well.

Start programs even without network: Checked, if user need to launch the startup programs which list in **Programs for Startup**, even the checking result is failed.

Show info dialog: It is for setting the text information which will be shown during checking network.

Touch Configuration



Capacitance touch sensitive : It's for setting the sensitive of touch. It's only available when device is using capacitance touch.

Resisted Touch Calibration: It's for touch calibration. It's only available when device is using Resisted touch.

Change Password

MD Change Password



Old Password:	<input type="password" value="****"/>
	✓ correct
New Password:	<input type="password" value="****"/>
	✓ correct
Confirm New Password:	<input type="password" value="****"/>
	✓ correct
	<input type="button" value="Save"/>

This form is for changing the ADMIN password.

Chapter 5

Maintenance

Maintaining the Battery

- Do not expose heat or attempt to disassemble the battery, and do not place the battery in water or in a fire.
- Do not subject the battery to strong impact, such as a blow from a hammer, or stepping on or dropping it.
- Do not puncture or disassemble the battery.
- Do not attempt to open or service the battery.
- Replace only with batteries designed specifically for this product.
- Keep the battery out of reach of children.
- Dispose of used batteries according to local regulations.

Maintaining the LCD Display

- Do not scratch the surface of the screen with any hard objects.
- Do not spray liquid directly on the screen or allow excess liquid to drip down inside the device.
- Do not place anything, such as food and drink, on the screen at any time to prevent damage to the screen.
- Clean the LCD display only with a soft cloth dampened with denatured alcohol or a proprietary LCD screen cleaner.

Cleaning the DLT-M8110

1. Turn off the DLT-M8110 and unplug the power cord.
2. Wipe the screen and exterior with a soft, damp cloth moistened only with water. Do not use liquid or aerosol cleaners on the screen, as these will discolor the finish and damage the screen.

Chapter 6

Appendix

Specifications

Feature	Specifications
CPU & Chipset	Intel Atom Baytrail-I, E3827 (1.75GHz)
Memory	Single SO-DIMM, DDR3L-1067, Up to 4GB.
Storage	SQF MSATA 820 MLC (-40 ~ 85°C), SLC option
Display	10.4" XGA (1024 x768) LED Backlight LCD (340 bits)
Touch Panel	Gorilla Glass for PCAP touch solution or Chemical Tempered Glass for Resistive touch solution (Optional)
Sensor	Accelerometer (G-sensor), Screen Rotation: 0°, 90°, 270°
Wireless Communication	Default WIFI 802.11 a/b/g/n Default Bluetooth V4.0 (Class2) + EDR
Camera	5M pixel CMOS Sensor
Data Collection	Built-in 2D barcode scanner
Audio Output	Integrated speakers
Input	Capacitive multi-touch Programmable button x8 On-screen QWERTY keyboard
LED Status Indicator	WiFi LED / Storage LED /Power LED / Battery LED / Temperature LED
External I/O Interfaces	USB 3.0 x 1 DC-in x 1 Docking Port x1 (32PIN)
Power Supply	Small battery: 2S1P 7.2V 1750mAh Big battery: 2S2P 14.4V 3800mAh AC Adapter: AC 100V-240V 50/60Hz
OS Support	Windows Embedded 8.1 Industry Pro 64bit Windows Embedded 8 Standard 64bit Windows Embedded 7 64bit Windows 7 Pro 64bit
Temperature & Humidity(with battery)	Operating Temperature: 0 to 45 °C Storage Temperature: -20 to 60 °C Operating Humidity: 5%~95% @ 40 °C
IP Rating	IP65
Drop & Vibration	MIL-STD-810F, Method 516.5, Procedure IV (or comparable EN test specification; see also test in regard to

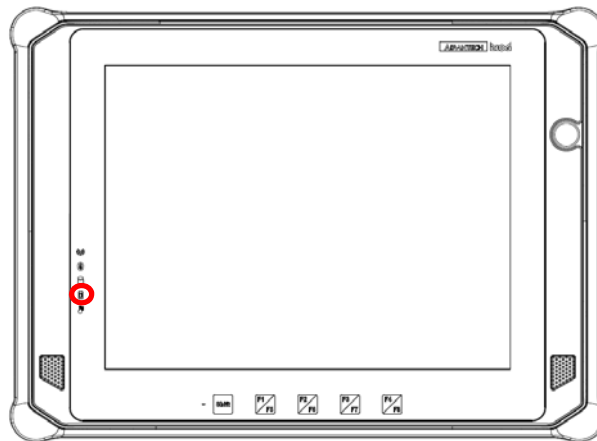
	810G). Description: Drop: 26 drops from 1.22 m onto concret EN60721 5M3 certified
EMC	CE/FCC/SAR/R&TTE/Telecom
Safety	UL/CB / LVD
Accessories	Vehicle Docking Station Desk Docking Station Big Battery Battery charger
Dimensions	304mm (W) x 221mm (D) x 31.84mm (H) (w/thin battery)
Weight	1.3kg without hand strap

LED Status

Power / Thermal LED

DUT on/off	Green LED	Orange LED	Red LED	Remark
OFF	OFF	OFF	OFF	System OFF (S5)
ON	Static	OFF	OFF	System ON (S0)
ON	Blinking	OFF	OFF	System SLEEP (S3)
ON	OFF	OFF	Static	Over Temperature
ON	OFF	OFF	Blinking	Sensor Faulty

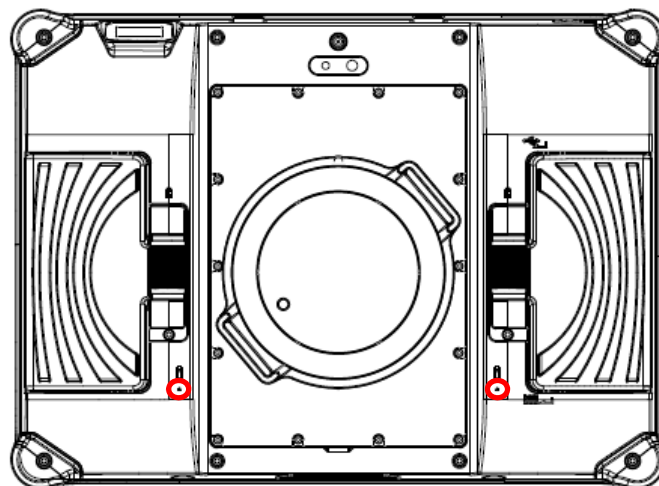
Front Battery LED



DUT on/off	AC Adapter In	Battery	Green LED	Orange LED	Red LED	Remark
OFF	x	√	OFF	OFF	OFF	System Off (S5)
OFF	√	√	OFF	Static	OFF	Battery Charging
OFF	√	√	OFF	OFF	OFF	Battery Full

ON	x	√	Static	OFF	OFF	System On (S0) Battery > 30%
ON	√	√	OFF	Static	OFF	Battery Charging
ON	√	√	OFF	OFF	OFF	Battery Full
ON	x	√	Blinking	OFF	OFF	Battery < 30% light 0.5sec,dark 0.5sec
ON	x	√	OFF	Blinking	OFF	Battery < 10% light 0.2sec,dark 0.8sec
ON/OFF	x √	√	OFF	OFF	Static	Battery Read Failure

Rear Battery LEDs



DUT on/off	AC Adapter In	Battery	Green LED	Orange LED	Red LED	Remark
ON	√	√	Static	OFF	OFF	Battery > 30%
ON	√	√	Blinking	OFF	OFF	Battery < 30%
ON	√	√	OFF	Blinking	OFF	Battery < 10%
ON	√	√	OFF	OFF	Static	Battery Read Failure
ON	x √	x	OFF	OFF	OFF	Battery

						Removed
--	--	--	--	--	--	---------