

DSA-3400

**Network Digital Signage
Platform
User Manual**

Copyright

This documentation and the software included with this product are copyrighted 2007 by Advantech Co., Ltd. All rights are reserved. Advantech Co., Ltd. reserves the right to make improvements in the products described in this manual at any time without notice. No part of this manual may be reproduced, copied, translated or transmitted in any form or by any means without the prior written permission of Advantech Co., Ltd. Information provided in this manual is intended to be accurate and reliable. However, ADVANTECH CO., LTD. assumes no responsibility for its use, nor for any infringements of the rights of third parties which may result from its use.

Acknowledgments

IBM and PC are trademarks of International Business Machines Corporation. MS-DOS, Windows, Microsoft Visual C++ and Visual BASIC are trademarks of Microsoft Corporation. Intel, Celeron and Pentium are trademarks of Intel Corporation. Delphi and C++ Builder are trademarks of Inprise Corporation.

CE notification

The DSA-3400, developed by ADVANTECH CO., LTD., has passed the CE test for environmental specifications when shielded cables are used for external wiring. We recommend the use of shielded cables. This kind of cable is available from Advantech. Please contact your local supplier for ordering information

On-line Technical Support

For technical support and service, please visit our support website at:
<http://www.advantech.com/support>

Part No. 2062340000
May. 2007 1st Edition
Printed in Taiwan

Contents

Chapter 1 Overview	15
1.1 Introduction	15
1.2 Features & Benefits.....	15
1.3 Hardware Specification	16
Chapter 2 Hardware Functionality.....	21
2.1 Introduction of DSA-3400 External I/O Connectors.....	21
2.2 DSA-3400 front plate external I/O connectors	22
2.3 DSA-3400 rear plate external I/O connectors	24
Chapter 3 Hardware Installation and Upgrade	30
3.1 Jumpers and Connectors.....	30
3.2 Setting jumpers	30
3.3 COM2 RS-232/485 Jumper setting (JP2)	31
3.4 Installing the DDR SDRAM Memory Module.....	31
3.5 Installing the 2.5" Hard Disk Drive (HDD)	33
3.7 Connecting Power.....	34
Chapter 4 Award BIOS Setup.....	36
4.1 Introduction	36
4.2 Entering Setup.....	36
4.3 Standard CMOS Setup.....	37
4.4 Advanced BIOS Features	38
4.5 Advanced Chipset Features	40
4.6 Integrated Peripherals.....	43
4.7 Power Management Setup.....	48
4.8 PnP/PCI Configurations	50
4.9 Password Setting	51
4.10 Save & Exit Setup.....	51
4.11 Exit Without Saving.....	51
Chapter 5 System Setup.....	53
5.1 Introduction	53
5.2 Installation of needed driver	54

Copyright and Disclaims

The documentation and the software included with this product are copyrighted 2007 by Advantech Co., Ltd. All rights are reserved. Advantech Co., Ltd. reserves the right to make improvements in the products described in this manual at any time without notice. No part of this manual may be reproduced, copied, translated or transmitted in any form or by any means without the prior written permission of Advantech Co., Ltd.

While Advantech has sought to ensure the accuracy of all information in this manual, Advantech assumes no liability to any party for any damage caused by any error or omission contained in this manual, its updates or supplements, whether such errors or omissions result from negligence, accident, or any other cause. In addition, Advantech assumes no liability with respect to the application or use of any product or system in accordance with the descriptions or instructions contained herein; including any liability for incidental or consequential damages arising therefrom.

ADVANTECH DISCLAIMS ALL WARRANTIES REGARDING THE INFORMATION CONTAINED HEREIN, WHETHER EXPRESSED, IMPLIED, OR STATUTORY.

Advantech reserves the right to make changes to any products described herein without further notice and without obligation. The contents of this manual may be revised without prior notice.

Acknowledgements

Intel and Pentium are trademarks of Intel Corporation.

Microsoft Windows and MS-DOS are registered trademarks of Microsoft Corp.

All other product names or trademarks are properties of their respective owners.

Product Warranty (2 year)

Advantech warrants to you, the original purchaser, that each of its products will be free from defects in materials and workmanship for one year from the date of purchase.

This warranty does not apply to any products which have been repaired or altered by persons other than repair personnel authorized by Advantech, or which have been subject to misuse, abuse, accident or improper installation. Advantech assumes no liability under the terms of this warranty as a consequence of such events.

Because of Advantech's high quality-control standards and rigorous testing, most of our customers never need to use our repair service. If an Advantech product is defective, it will be repaired or replaced at no charge during the warranty period. For out-of-warranty repairs, you will be billed according to the cost of replacement materials, service time and freight. Please consult your dealer for more details.

If you think you have a defective product, follow these steps:

1. Collect all the information about the problem encountered. (For example, CPU speed, Advantech products used, other hardware and software used, etc.) Note anything abnormal and list any onscreen messages you get when the problem occurs.
2. Call your dealer and describe the problem. Please have your manual, product, and any helpful information readily available.
3. If your product is diagnosed as defective, obtain an RMA (return merchandise authorization) number from your dealer. This allows us to process your return more quickly.
4. Carefully pack the defective product, a fully-completed Repair and Replacement Order Card and a photocopy proof of purchase date (such as your sales receipt) in a shippable container. A product returned without proof of the purchase date is not eligible for warranty service.
5. Write the RMA number visibly on the outside of the package and ship it prepaid to your dealer.

Declaration of Conformity

CE

This product has passed the CE test for environmental specifications when shielded cables are used for external wiring. We recommend the use of shielded cables. This kind of cable is available from Advantech. Please contact your local supplier for ordering information.

This product has passed the CE test for environmental specifications. Test conditions for passing included the equipment being operated within an industrial enclosure. In order to protect the product from being damaged by ESD (Electrostatic Discharge) and EMI leakage, we strongly recommend the use of CE-compliant industrial enclosure products.

FCC Class B

Note: This equipment has been tested and found to comply with the limits for a Class B digital device, pursuant to part 15 of the FCC Rules. These limits are designed to provide reasonable protection against harmful interference when the equipment is operated in a commercial environment. This equipment generates, uses, and can radiate radio frequency energy and, if not installed and used in accordance with the instruction manual, may cause harmful interference to radio communications. Operation of this equipment in a residential area is likely to cause harmful interference in which case the user will be required to correct the interference at his own expense.

This equipment has been tested and found to comply with the limits for a Class B digital device, pursuant to part 15 of the FCC rules. These limits are designed to provide reasonable protection against harmful interference in a residential installation. This equipment generates, uses and can radiate radio frequency energy and, if not installed and used in accordance with the instructions, may cause harmful interference to radio communications. However, there is no guarantee that interference will not occur in a particular installation. If this equipment does cause harmful interference to radio or television reception, which can be determined by turning the equipment off and on, the user is encouraged to try to correct the interference by one or more of the following measures:

- Reorient or relocate the receiving antenna.
- Increase the separation between the equipment and receiver.
- Connect the equipment into an outlet on a circuit different from that to which the receiver is connected.
- Consult the dealer or an experienced radio/TV technician for help.

You are cautioned that changes or modifications not expressly approved by the party responsible for compliance could void your authority to operate the equipment.

FCC RF Radiation Exposure Statement:

1. This Transmitter must not be co-located or operating in conjunction with any other antenna or transmitter.
2. This equipment complies with FCC RF radiation exposure limits set forth for an uncontrolled environment. This equipment should be installed and operated with a minimum distance of 20 centimeters between the radiator and your body.

Technical Support and Assistance

Step 1. Visit the Advantech web site at <http://www.advantech.com/support> where you can find the latest information about the product. Contact your distributor, sales representative, or Advantech's customer service center for technical support if you need additional assistance.

Please have the following information ready before you call:

- Product name and serial number
- Description of your peripheral attachments
- Description of your software (operating system, version, application software, etc.)
- A complete description of the problem
- The exact wording of any error messages

DSA-3400 Series Model

There are 4 sub-models in DSA-3400 series listed below:

Part Number	CPU	RAM	HDD	Wireless module	TV tuner
DSA-3400-NT56E	Intel Core™ 2 Duo T5600 1.83 GHz	2 x 512 MB	40G	None	None
DSA-3400-WT56E	Intel Core™ 2 Duo T5600 1.83 GHz	2 x 512 MB	40G	802.11b/g	None
DSA-3400-HT56E (project upon request)	Intel Core™ 2 Duo T5600 1.83 GHz	2 x 512 MB	40G	None	DVB-T and Analog
DSA-3400-AT56 (project upon request)	Intel Core™ 2 Duo T5600 1.83 GHz	2 x 512 MB	40G	None	Analog

Table A. DSA-3400 Model List

The Windows® XP Embedded, TV tuner and Signage software are optional choice.

Packing List

Before installing your board, make sure that the following materials have been received:

Part Number	Description	Qty
2190000902	CARDBOARD-WARRANTY REV. A2	1
2062340000	Utility CD	1
1700060202	Keyboard and mouse Y cable Power adapter	1
1700001394	DC Jack with 2-pin pluggable terminal block	1
1757000799	AC to DC Adapter , 19V DC@3.16A , 60W , 100-240V	1
1960007897	Mounting Accessory	2

Table B. DSA-3400 Model List

Important Safety Information

SAFETY INSTRUCTIONS

1. Please read these safety instructions carefully.
2. Please keep this User's Manual for later reference.
3. Please disconnect this equipment from power outlet before cleaning. Don't use liquid or sprayed detergent for cleaning.
4. For pluggable equipment, the socket-outlet shall be installed near the equipment and shall be easily accessible.
5. Please keep this equipment from humidity.
6. Lay this equipment on a reliable surface when install. A drop or fall could cause injury.
7. Do not leave this equipment in an environment unconditioned, storage temperature above 50°C, it may damage the equipment.
8. The openings on the enclosure are for air convection hence protects the equipment from overheating. **DO NOT COVER THE OPENINGS.**
9. Make sure the voltage of the power source when connect the equipment to the power outlet.
10. Place the power cord such a way that people can not step on it. Do not place anything over the power cord. The power cord must be rated for the product and for the voltage and current marked on the product's electrical ratings label. The voltage and current rating of the cord should be greater than the voltage and current rating marked on the product.
11. All cautions and warnings on the equipment should be noted.
12. If the equipment is not use for long time, disconnect the equipment from mains to avoid being damaged by transient over-voltage.
13. Never pour any liquid into ventilation openings; this could cause fire or electrical shock.
14. Never open the equipment. For safety reason, qualified service personnel should only open the equipment.
15. If one of the following situations arises, get the equipment checked by service personnel:
 - a. The Power cord or plug is damaged.
 - b. Liquid has penetrated into the equipment.
 - c. The equipment has been exposed to moisture.
 - d. The equipment has not work well or you can not get it work according to user's manual.
 - e. The equipment has dropped and damaged.
 - f. If the equipment has obvious sign of breakage

16. Never open the equipment. For safety reason, qualified service personnel should only open the equipment. *The customer forbid to change the battery and fuse of DSA-3400.*

17. **CAUTION:** The computer is provided with a battery-powered real-time clock circuit. There is a danger of explosion if battery is incorrectly replaced. Replace only with same or equivalent type recommended by the manufacture. Discard used batteries according to the manufacturer's instructions.

18. This device complies with Part 15 of the FCC rules. Operation is subject to the following two conditions:

(1) This device may not cause harmful interference, and

(2) This device must accept any interference received, including interference that may cause undesired operation

Safety Precaution - Static Electricity

Follow these simple precautions to protect yourself from harm and the products from damage.

1. To avoid electrical shock, always disconnect the power from your PC chassis before you work on it. Don't touch any components on the CPU card or other cards while the PC is on.
2. Disconnect power before making any configuration changes. The sudden rush of power as you connect a jumper or install a card may damage sensitive electronic components.

CHAPTER 1

Overview

This chapter gives background information on the DSA-3400 series. It shows you the DSA-3400 overview and specifications.

Sections include:

- Introduction
- Hardware Specifications
- DSA-3400 Series Model and Packing List
- Chassis Dimension

Chapter 1 Overview

1.1 Introduction

DSA-3400 is a small profile; all-in-one Windows® XPE ready network appliance and control box for Digital Signage Application. The compact, easy-to-implement network appliance that enables centralized control, scheduling and delivery of multimedia content for digital signage through IP/Ethernet networks. Built on x86 platform and standards I/O, it is easy for application developing and can be integrated with PDPs (Plasma Display Panel), LCDs with a multi-vendor networking environment. A wireless option is available for locations where a wiring infrastructure is not available for network connectivity. A TV-tuner option is also available for integrate the TV function into the signage application. DSA-3400 combines with the EWF, WDT and Boot schedule SDK give the maximum reliability for digital signage application.

1.2 Features & Benefits

1.2.1 High Performance

- DSA-3400 series incorporate an Intel® Celeron M 1.5GHz/ Intel® Pentium M 1.6GHz processor for smooth program playback, and include 512 MB of base memory and a default 40GB hard disk drive for program and storage of media files.

1.2.2 Compact & Robust Form Factor

- The small foot-print and low-profile case design of DSA-3400 series was designed to facilitate different types of mounting and installation.

1.2.3 Network-Manageable

- DSA-3400 series function as the IP-addressable client so that they can be connected locally through a Local Area Network or remotely through Wide Area Network.

1.2.4 Wireless & Tuner Options

- DSA-3400 series can be connected to the network either via a wireless connection or through standard Ethernet cable. DSA-3400 also come with a tuner-integrated option which enable the incorporating live TV programs as part of presentation material.

1.2.5 Enhanced Reliability

- DSA-3400 series integrated the EWF (Enhanced Write Filter) function, WDT (Watch Dog Timer) and schedule boot SDK. Running under Microsoft Windows® XP Embedded OS, EWF provides a facility for protecting a partition from write accesses. It makes the system always keep in its original state to maximum the system reliability.

1.2.6 Options for Expansion

- DSA-3400 series integrates the EWF (Enhanced Write Filter) function ,WDT (Watch Dog Timer) and scheduled boot-up SDK. Running under Microsoft Windows® XP Embedded OS, EWF provides a facility for protecting a partition from write accesses. It allows the system to maintain its original state to maximum system reliability.

1.3 Hardware Specification

1.3.1 Processor Core Logic System

CPU Type : Intel Core™ 2 Duo / Core™ Duo / Core™ Solo Mobile processor, PGA 478 Package

Part Number	Intel® CPU Type	Intel® Chipset	Wireless module	TV tuner
DSA-3400-NT56E	Intel Core™ 2 Duo T5600 1.83 GHz	Intel 945GM / ICH7M	None	None
DSA-3400-WT56E	Intel Core™ 2 Duo T5600 1.83 GHz	Intel 945GM / ICH7M	802.11b/g	None
DSA-3400-HT56E (project upon request)	Intel Core™ 2 Duo T5600 1.83 GHz	Intel 945GM / ICH7M	None	DVB-T and Analog
DSA-3400-AT56 (project upon request)	Intel Core™ 2 Duo T5600 1.83 GHz	Intel 945GM / ICH7M	None	Analog

Table 1.1: DSA-3400 Model List

BIOS: 4Mbit Flash BIOS supports Plug & Play, APM 1.2

System Memory

- One 200 pin SO-DIMM sockets, support DDRII SDRAM Up to 2GB, DDR 400/533/667 DRAM

1.3.2 Display

Chipset

- Integrated graphics built-in Intel Graphics Media Accelerator 950

Display Memory

- Dynamic video memory allocation up to 224 M

Display Interface support

- VGA and DVI Interface

1.3.3 Ethernet

- Ethernet Controller: Marvel 88E8053
- Speed: 10/100/1000Mbps
- Support PXE
- Support WOL(Wake On LAN)

1.3.4 Other

- Watchdog Timer: 255 levels timer interval, setup by software
- Serial Port: One RS-232 port (COM1) and One RS-485/422 port (COM2) (default RS-232)
- Keyboard/Mouse: One PS/2 Port to support PS/2 Mouse and PS/2 Keyboard
- USB: 4 USB 2.0 compliant universal serial bus port

1.3.5 Storage

- Support a drive bay space for 2.5' HDD Tray (40G default)

1.3.6 Mechanical

- Construction: Metal housing
- Mounting: Easy Mounting Kits for LCD or Plasma
- Dimension (W x H x D):

DSA-3400: 222 x 135 x 47 mm (8.7" x 5.3" x 1.85" inches) ; Weight: 1.47 KG

1.3.7 Power Supply

- Maximum Output Rating 45 W
- Inside Fuse Rating 7 A
- Input Voltage: 12 ~ 24V DC,

Typical:

12V DC @ 4.14 A ,

24 DC @ 2.07 A,

1.3.8 Environment Specifications

- Operating Temperature: -10 to 40° C

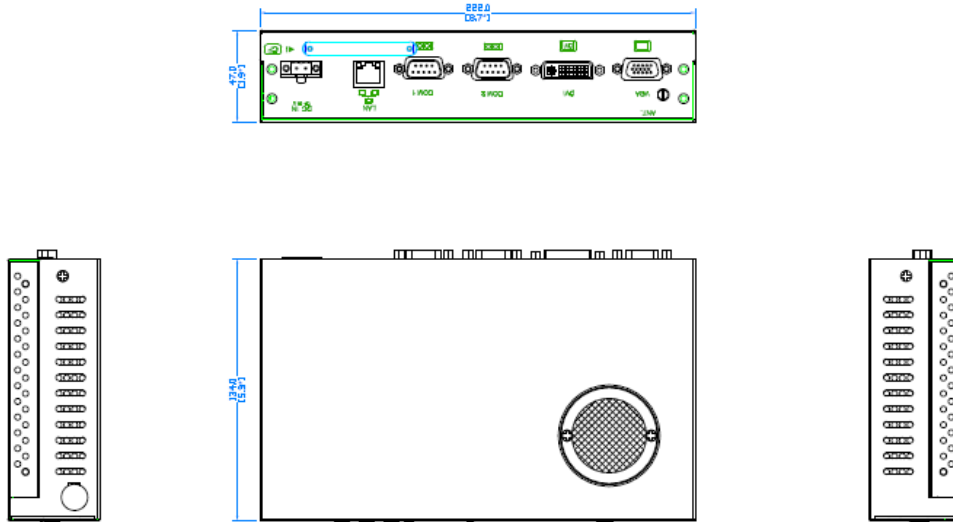
Warning: Please do not keep DSA-3400 working in a closed environment. The temperature in a closed environment might get higher over the operation temperature.

- Relative humidity 95 % @ 40 ° C (non-condensing)

1.3.9 Certificate Approved

- EMC Approved: CE, FCC Class B (include Wireless module, EU and US announce)
- Safety Approved: UL, CB, CCC
- Environmental protection: RoHS, WEEE

1.4 Dimensions Diagram



DSA-3400
Unit: mm (inch)

CHAPTER 2

Hardware Functionality

This chapter shows how to set up the DSA-3400 hardware functions, including connecting peripherals, switches and indicators.

Sections include:

- Introduction of External I/O Connectors
- Front plate external I/O Connectors
- Power Connector
- LED Indicators
- Video Input Connectors
- Isolated Digital I/O
- Audio Connectors
- Rear plate external I/O Connectors
- COM1 Connector
- COM2 Connector
- Ethernet Connector
- Reset Button
- PS2 Keyboard/Mouse Connector

Chapter 2 Hardware Functionality

2.1 Introduction of DSA-3400 External I/O Connectors

The following two figures show the external I/O connectors on DSA-3400. The following sections give you detailed information about the function of each I/O connector.



Figure 2.1: DSA-3400 front metal face plate external I/O connectors



Figure 2.2: DSA-3400 rear metal face plate I/O connectors

2.2 DSA-3400 front plate external I/O connectors

2.2.1 Power ON/OFF Button

The DSA-3400 comes with a Power On/Off button, that Support dual function Soft Power - On/Off (Instant off or Delay 4 Second), and Suspend.



Figure 2.3: DSA-3400 power button

2.2.2 LED Indicators

There are two LEDs on the DSA-3400 front face plate for indicating system status: PWR LED is for power status and flash in green color; and HDD LED is for hard disk and compact flash disk status, which flash in red color.



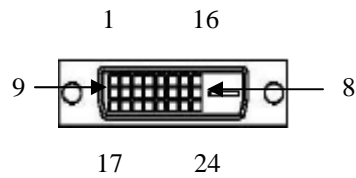
Figure 2.4: DSA-3400 LED indicators

2.2.3 DVI Connector



Figure 2.5: DVI Connector

The DSA-3400 can support DVI input. The pin definition of video connector and video cable is following:



CN1 PIN NO#		CN2 PIN NO#		CN1 PIN NO#		CN2 PIN NO#	
1		17		13		-	
2		19		14		2	
3		4		15		16	
4		-		16		10	
5		-		17		1	
6		14		18		3	
7		12		19		-	
8		-		20		-	
9		9		21		-	
10		11		22		-	
11		-		23		18	
12		-		24		20	

Table 2.1 DVI Video Input Connector

2.2.4 MIC-in, Line-out



Figure 2.6: MIC-in and Line out

2.3 DSA-3400 rear plate external I/O connectors

2.3.1 Power Input Connector

The DSA-3400 comes with a Phoenix connector that carries 12~24 VDC external power input.



Figure 2.7: power input connector

Pin	Definition	Pin	Define
1	Grand	2	+12~24 VDC

Table 2.2 Power connector pin assignments

2.3.2 COM1 Connector

The DSA-3400 provides a D-sub 9-pin connector, which offers one standard RS-232 serial communication interface port of COM1.

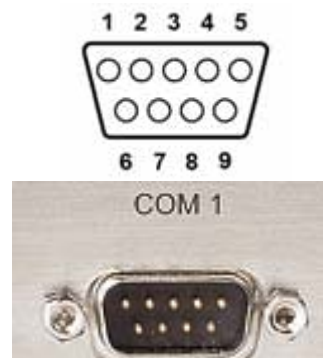


Figure 2.8: COM1 connector

Pin	Definition	Pin	Definition
1	DCD	6	DSR
2	RxD	7	RTS
3	TxD	8	CTS
4	DTR	9	RI
5	GND	N/A	N/A

Table 2.3 COM1 connector pin assignments

2.3.3 COM2 Connector (Default RS-232)

The DSA-3400 provides a D-sub 9-pin connector, which offers one RS-485/RS-232 serial communication interface port for COM2. The default setting of COM2 is RS-232. The figure of below is the sample of setting for RS485.



Figure 2.9: COM2 connector

Pin	RS-485
1	DATA-
2	DATA+
3	No Connection
4	No Connection
5	GND
6	No Connection
7	No Connection
8	No Connection
9	No Connection

Table 2.4 COM2 connector pin assignments

2.3.4 Ethernet Connector (LAN)

The DSA-3400 is equipped with an Intel 82551QM(WOL supported) Fast Ethernet controller that is fully compliant with IEEE 802.3u 10/100Base-T CSMA/CD standards. The Ethernet port provides a standard RJ-45 jack connector with LED indicators on the front side to show

its Active/Link status (Green LED) and Speed status (white LED).

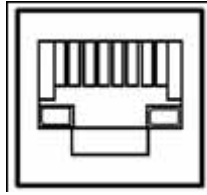


Figure 2.10: Ethernet connector

Pin	10/100 Base Signal Name
1	XMT+
2	XMT-
3	RCV+
4	No Connection
5	No Connection
6	RCV-
7	No Connection
8	No Connection

Table 2.5 Ethernet connector pin assignments

2.3.5 PS2 Keyboard/Mouse Connector

The DSA-3400 provides a PS/2 keyboard/mouse connector. A 6-pin mini-DIN connector is located on the rear face plate. It comes with an external Y cable to convert from the 6-pin mini-DIN connector to PS/2 keyboard and PS/2 mouse connection.

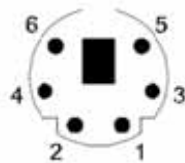


Figure 2.11: PS2 Keyboard/Mouse connector

Pin	Definition
1	PS2_KBDAT
2	PS2_MS DAT
3	GND
4	VCC
5	PS2_KBCLK
6	PS2_MSCLK

Table 2.6 PS2 Keyboard/Mouse connector pin assignments

2.3.7 VGA Connector

The DSA-3400 provides a high resolution VGA interface by a D-sub 15-pin connector to support a VGA CRT monitor. It supports VGA and VESA, up to 1600 x 1200 @85-Hz resolution and up to 64 MB shared memory.

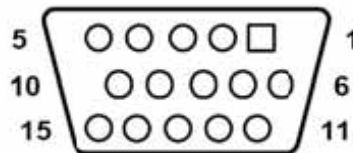


Figure 2.12: VGA connector

Pin	Definition	Pin	Definition
1	Red	9	No Connection
2	Green	10	GND
3	Blue	11	No Connection
4	No Connection	12	No Connection
5	GND	13	H-SYNC
6	GND	14	V-SYNC
7	GND	15	No Connection
8	GND	N/A	N/A

Table 2.7 VGA connector pin assignments

2.3.8 USB Connector

The DSA-3400 provides 4 connectors for USB interface, which gives complete Plug & Play and hot swapping for up to 127 external devices. The USB interface complies with USB UHCI, Rev. 2.0 compliant. The USB interface can be disabled in the system BIOS setup.

The USB connector is used for connecting any device that conforms to the USB interface. Many recent digital devices conform to this standard. The USB interface supports Plug and Play, which enables you to connect or disconnect a device whenever you want, without turning off the computer.

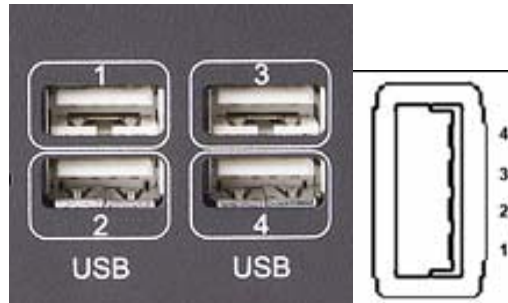


Figure 2.13: USB connector

Pin	Definition	Pin	Definition
1	VCC	3	USB_P+
2	USB_P-	4	GND

Table 2.8 USB connector pin assignments

Hardware Installation and Upgrade

This chapter introduces how to initialize the DSA-3400.

Sections include:

- Installing the DDR SDRAM Memory Module
- Inserting a Compact Flash Card
- Installing the 2.5" Hard Disk Drive (HDD)
- Connecting Power

Chapter 3 Hardware Installation and Upgrade

3.1 Jumpers and Connectors

The DSA-3400 Embedded/Mobile Video System consists of a PC-based computer that is housed in a aluminum top cover, a metal bottom case with accessed bottom cover and front with rear metal face plate. The HDD, SDRAM, are accessible by removing the accessed bottom cover. Any maintenance or hardware upgrades can be easily completed after removing the top cover, front and rear plates.



Warning!

Do not remove any mechanical parts, such as the top cover, bottom cover and front with rear face plate until you have verified that no power is flowing within the embedded box computer. Power must be switched off and the power cord must be unplugged. Every time you service the embedded box computer, you should be aware of this.

3.2 Setting jumpers

You can configure your DSA-3400 to match the needs of your application by setting jumpers. A jumper is the simplest kind of electrical switch. It consists of two metal pins and a small metal clip (often protected by a plastic cover) that slides over the pins to connect them. To “close” a jumper, you connect the pins with the clip. To “open” a jumper you remove the clip. Sometimes a jumper will have three pins, labeled 1, 2, and 3. In this case, you would connect either pins 1 and 2 or pins 2 and 3.

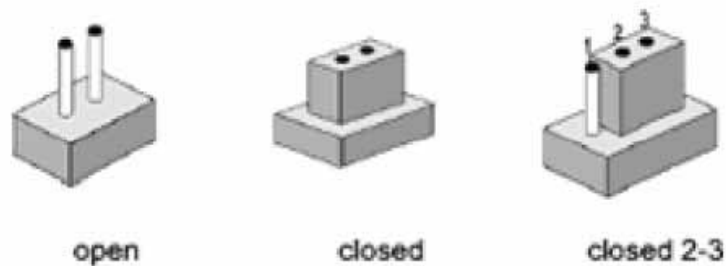


Figure 3.1: Jump type-1

The jumper settings are schematically depicted in this manual as follows:

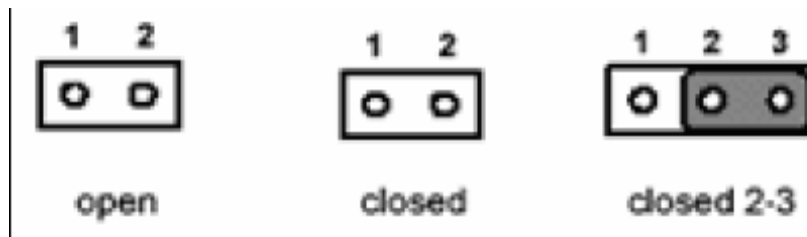


Figure 3.2: Jump type-2

A pair of needle-nose pliers may be helpful when working with jumpers. If you have any doubts about the best hardware configuration for your application, contact your local distributor or sales representative before you make any changes.

3.3 COM2 RS-232/485 Jumper setting (JP2)

The COM2 port located on front metal face plate of DSA-3400 unit which can be configured to operate in RS-232 (default setting) or RS-485 mode by setting up the Jumper Pins of JP2 located on internal motherboard of DSA-3400 unit.

Setting	Function
JP2(5-6 closed) , (7-9 closed) , (8-10 closed) , (13-15 closed) , (14-16 closed)	RS-232
JP2(1-2 closed) , (9-11 closed) , (10-12closed) , (15-17 closed) , (16-18 closed)	RS-485

Table 3.1 COM2 Jumper setting

3.4 Installing the DDR SDRAM Memory Module

The DSA-3400 provides one 200-pin SODIMM (Small Outline Dual Inline Memory Module) socket and supports 2.5V DDR SDRAM. You can install from 64 MB up to 1 GB of DDR SDRAM memory. The procedure of installing a DDR SDRAM SODIMM into the DSA-3400 is detailed below, please follow these steps carefully.

1. Remove the power line first.
2. Unscrew the 2 screws from the left and right with top cover of the DSA-3400.

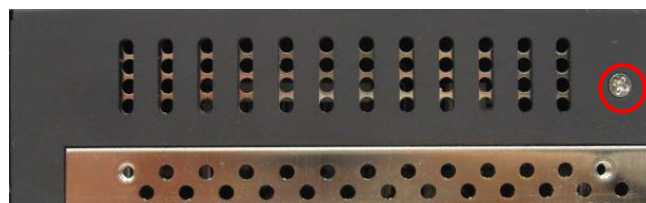


Figure 3.2: The left side of DSA-3400

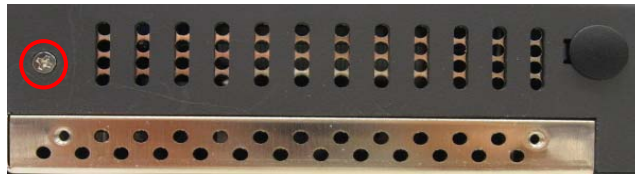


Figure 3.3: The right side of DSA-3400

3. Remove the top cover.

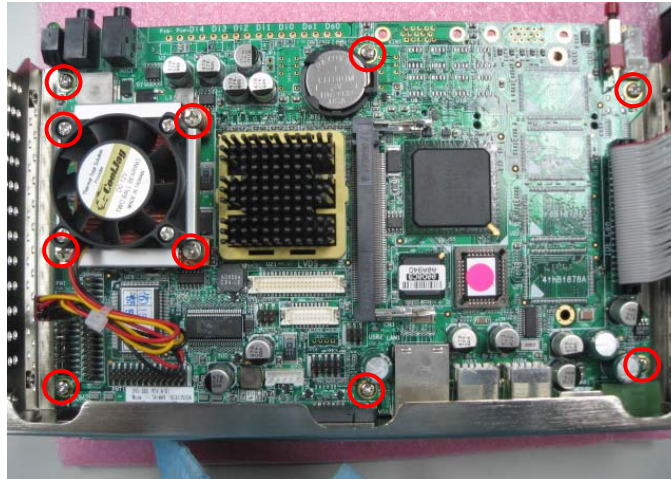


Figure 3.4: The bottom inside of DSA-3400

4. Unscrew the 10 screws from mother board to the bottom.(refer the *Figure 3.4: The bottom inside of DSA-3400*)



Figure 3.5: The back I/O side of DSA-3400

5. Use Hexagon socketscrew keys remove the back D-sub Hexagon screw of bottom.

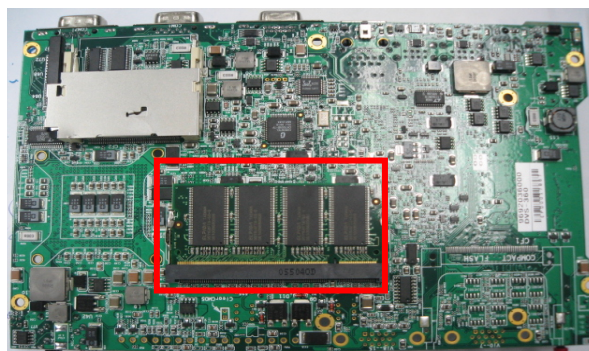


Figure 3.6: The mother downside of DSA-3400

6. Plug and Push a DDR SODIMM SDRAM (200pin) into a socket on board.
6. Press down the DRAM module and you will hear the “Click”.
7. One reverse the steps could restore the DSA-3400.

3.5 Installing the 2.5" Hard Disk Drive (HDD)

You can attach one enhanced Integrated Device Electronics (IDE) hard disk drive to the DSA-3400's internal controller which uses a PCI local bus interface. The advanced IDE controller supports faster data transfer and allows the IDE hard drive to exceed 528 MB.

For the automotive application and harsh (high temperature) environment installation, we STRONGLY suggest users to use the wide-range 2.5" hard disk driver designed and manufactured specifically for this application. As we know, **Seagate EE25 Series** hard drive and **Fujitsu MHT2020AC** hard drive can meet higher operating temperature (–30° to 85°C) and vibration tolerance (Up to 2.0 Gs). For more information about the wide-range hard drives, we suggest you **Google** the “Seagate EE25 Series” and “Fujitsu MHT2020AC” on web. You should find some useful information from the internet.

The following are instructions for installation:

1. Remove the power line first.
2. Unscrew the 4 screws on HDD mounting top cover of the DSA-3400(refer *Figure 3.4: The Hard Disc of DSA-3400*)

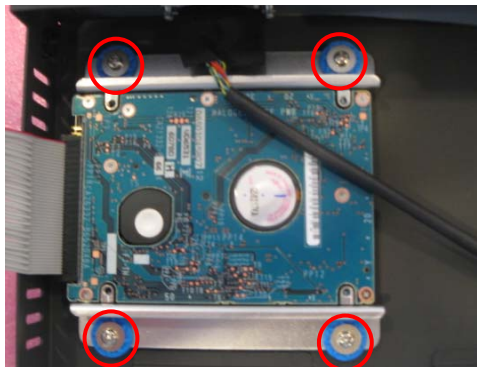


Figure 3.7: The Hard Disc mount the top cover of DSA-3400

3. Remove the HDD mounting bottom cover of the DSA-3400.
4. Unscrew the 4 screws on rim of HDD mounting top cover of the DSA-3400

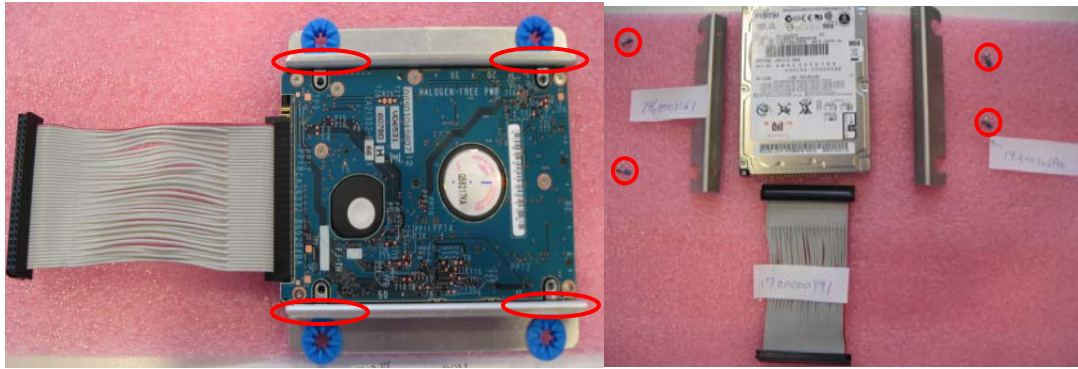


Figure 3.8: Unscrew the 4 screws on rim of HDD

4. Fixing your HDD with 4 screws on rim and HDD mounting top cover by using the 4 screws stored in accessories box.
5. Connect the IDE flat cable to the connector on the hard disk.
6. Make sure the tight connection between the flat cable and the hard disc drive.
7. Screw back the bottom cover with the 2 screws.

3.7 Connecting Power

Connect the DSA-3400 to a 12~24V DC power source. The power source can either be from a power adapter or an in-house power source.

Warning: For the automotive application, the power voltage is very unstable during the key ignition and might be lower to 12V DC. Please make sure the system is not under booting or operating. The unstable power source might cause the shot-down to the system and the data loss.

CHAPTER

4

Award BIOS Setup

Chapter 4 Award BIOS Setup

4.1 Introduction

Award's BIOS ROM has a built-in setup program that allows users to modify the basic system configuration. This type of information is stored in battery-backed memory (CMOS RAM) so that it retains the setup information when the power is turned off.

4.1.1 CMOS RAM Auto-backup and Restore

The CMOS RAM is powered by an onboard button cell battery. When you finish BIOS setup, the data in CMOS RAM will be automatically backed up to Flash ROM. If operation in harsh industrial environments causes a soft error, BIOS will recheck the data in CMOS RAM and automatically restore the original data in Flash ROM to CMOS RAM for booting.

Note: If you intend to change the CMOS setting without restoring the previous backup, you have to click on "DEL" within two seconds of the "CMOS checksum error..." display screen message appearing. Then enter the "Setup" screen to modify the data. If the "CMOS checksum error..." message appears again and again, please check to see if you need to replace the battery in your system.

4.2 Entering Setup

Turn on the computer and check for the "patch code". If there is a number assigned to the patch code, it means that the BIOS support your CPU. If there is no number assigned to the patch code, please contact Advantech's applications engineer to obtain an up-to-date patch code file. This will ensure that your CPU's system status is valid. After ensuring that you have a number assigned to the patch code, pressing to allow you to enter the setup

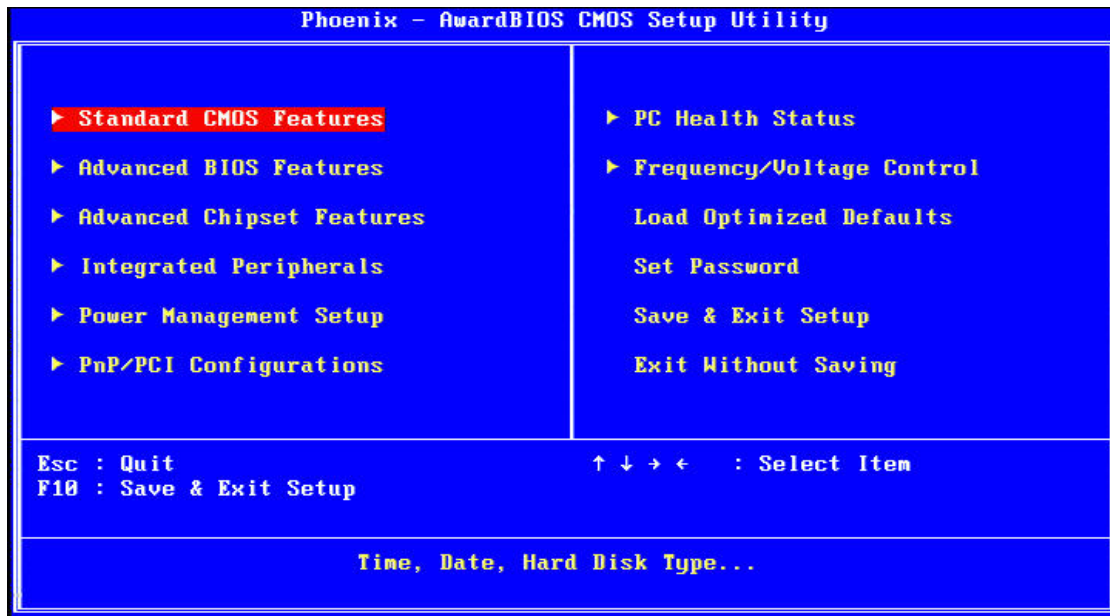


Figure 4.1: Award BIOS Setup initial screen

4.3 Standard CMOS Setup

Choose the “Standard CMOS Features” option from the “Initial Setup Screen” menu, and the screen below will be displayed. This menu allows users to configure system components such as date, time, hard disk drive, floppy drive, display, and memory.

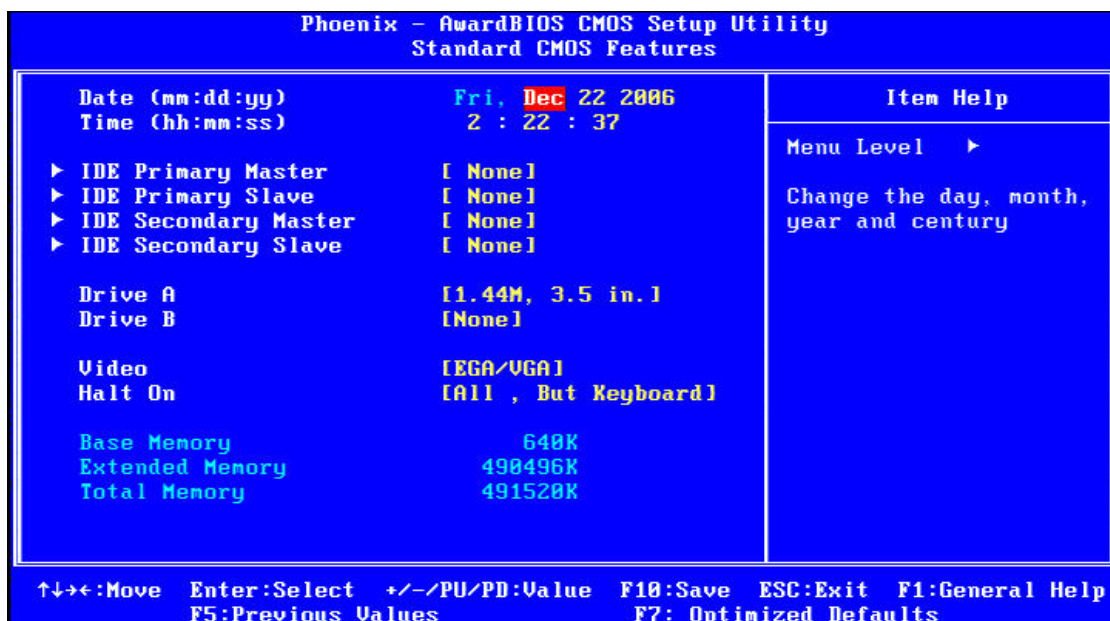


Figure 4.2: Standard CMOS features screen

4.4 Advanced BIOS Features

The “Advanced BIOS Features” screen appears when choosing the “Advanced BIOS Features” item from the “Initial Setup Screen” menu. It allows the user to configure the DSA-3400 according to his particular requirements. Below are some major items that are provided in the Advanced BIOS Features screen. A quick booting function is provided for your convenience. Simply enable the Quick Booting item to save yourself valuable time

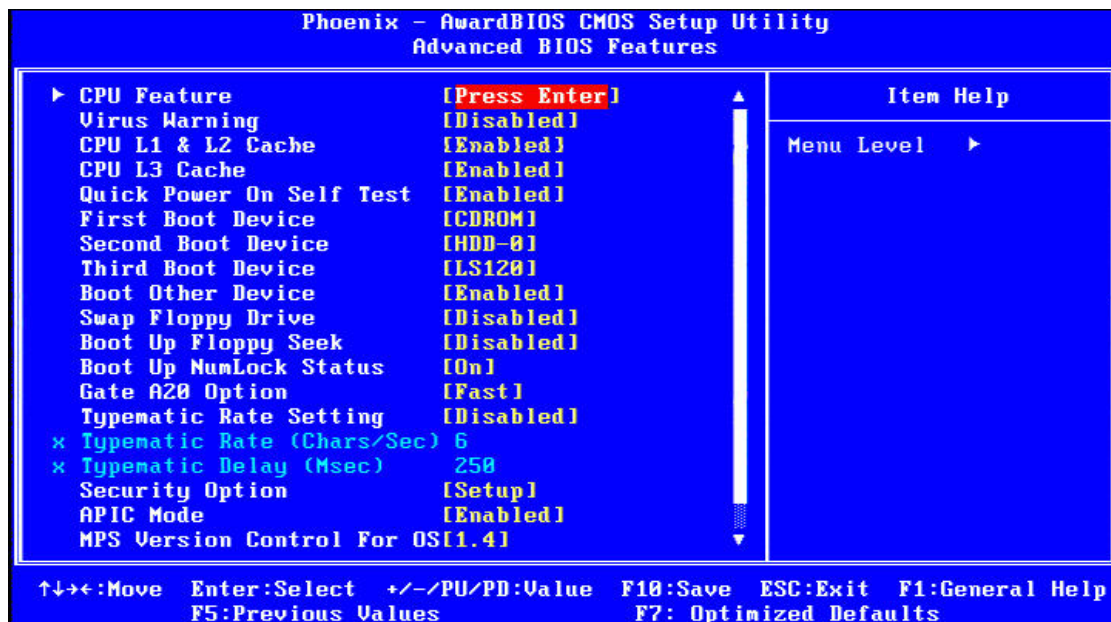


Figure 4.3: Advanced BIOS features screen

4.4.1 CPU Feature

Press Enter to configure the settings relevant to CPU Feature.

4.4.2 Virus Warning

If enabled, a warning message and alarm beep activates if someone attempts to write here.

The commands are “Enabled” or “Disabled.”

4.4.3 CPU L1 & L2 Cache

Enabling this feature speeds up memory access. The commands are “Enabled” or “Disabled.”

4.4.4 Quick Power On Self Test

This option speeds up the Power-On Self Test (POST) conducted as soon as the computer is turned on. When enabled, BIOS shortens or skips some of the items during the test. When disabled, the computer conducts normal POST procedures.

4.4.5 First/Second/Third/ Boot Other Device

The BIOS tries to load the OS with the devices in the sequence selected. Choices are: Floppy, LS/ZIP, HDD, SCSI, CDROM, LAN, Disabled.

4.4.6 Swap Floppy Drive

Logical name assignments of floppy drives can be swapped if there is more than one floppy drive. The commands are "Enabled" or "Disabled."

4.4.7 Boot UP Floppy Seek

Selection of the command "Disabled" will speed the boot up. Selection of "Enabled" searches disk drives during boot up.

4.4.8 Boot Up NumLock Status

This feature selects the "power on" state for NumLock. The commands are "Enabled" or "Disabled."

4.4.9 Gate A20 Option

Normal: A pin in keyboard controller controls GateA20

Fast (Default): Chipset controls GateA20

The typematic rate is the rate key strokes repeat as determined by the keyboard controller.

The commands are "Enabled" or "Disabled." Enabling allows the typematic rate and delay to be selected.

4.4.10 Typematic Rate (Chars/Sec)

BIOS accepts the following input values (characters/second) for typematic rate: 6, 8, 10, 12, 15, 20, 24, 30.

4.4.11 Typematic Delay (msec)

Typematic delay is the time interval between the appearance of two consecutive characters, when holding down a key. The input values for this category are: 250, 500, 750, 1000 (msec).

4.4.12 Security Option

This field allows you to limit access to the System and Setup. The default value is Setup. When you select System, the system prompts for the User Password every time you boot up. When you select Setup, the system always boots up and prompts for the Supervisor Password only when the Setup utility is called up.

4.4.13 APIC Mode

APIC stands for Advanced Programmable Interrupt Controller. The default setting is Enabled.

4.4.14 MPS Version Control For OS

This option specifies the MPS (Multiprocessor Specification) version for your operating system. MPS version 1.4 added extended configuration tables to improve support for multiple PCI bus configurations and improve future expandability. The default setting is 1.4.

4.4.15 OS Select for DRAM > 64MB

This option allows the system to access greater than 64MB of DRAM memory when used with OS/2 that depends on certain BIOS calls to access memory. The default setting is Non-OS/2.

4.4.16 Report No FDD For WIN 95

If you are using Windows 95/98 without a floppy disk drive, select Enabled to release IRQ6. This is required to pass Windows 95/98's SCT test. You should also disable the Onboard FDC Controller in the Integrated Peripherals screen when there's no floppy drive in the system. If you set this feature to Disabled, the BIOS will not report the missing floppy drive to Win95/98.

4.4.17 Small Logo (EPA) Show

The EPA logo appears at the right side of the monitor screen when the system is boot up. The default setting is Enabled.

4.5 Advanced Chipset Features

The "Advanced Chipset Features" screen appears when choosing the "Advanced Chipset Features" item from the "Initial Setup Screen" menu. It allows the user to configure the system chipset according to his particular requirements. Below are some major items that are provided in the Advanced Chipset Features screen.

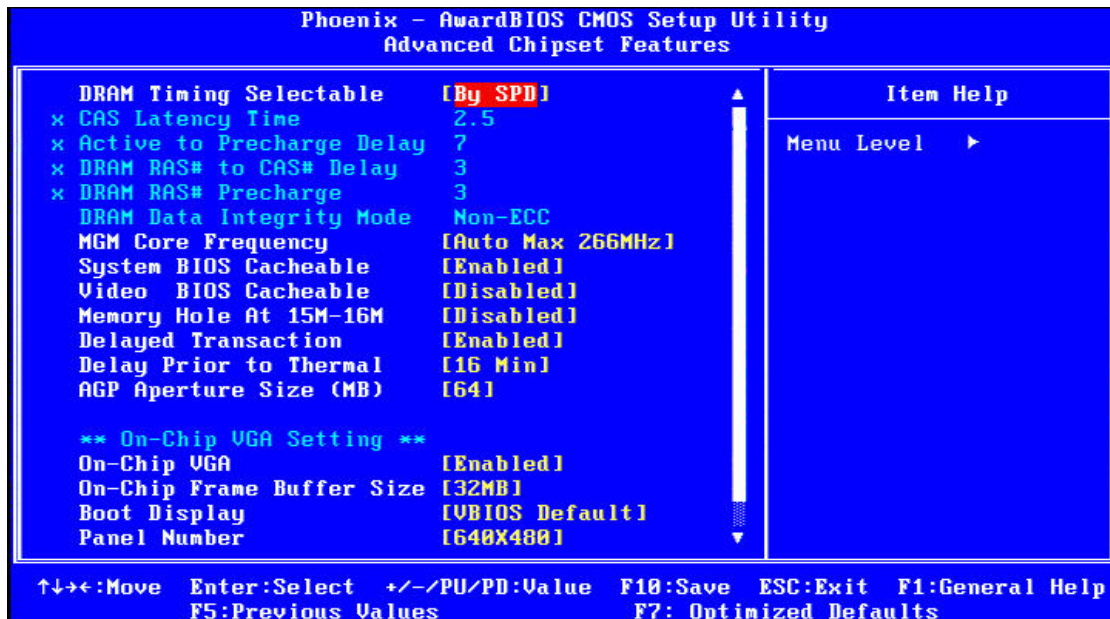


Figure 4.4: Advanced Chipset features screen

4.5.1 DRAM Timing Selectable

This option refers to the method by which the DRAM timing is selected. The default is By SPD.

4.5.2 CAS Latency Time

You can configure CAS latency time in HCLKs as 2 or 2.5 or 3. The system board designer should set the values in this field, depending on the DRAM installed. Do not change the values in this field unless you change specifications of the installed DRAM or the installed CPU.

4.5.3 Active to Precharge Delay

The default setting for the Active to Precharge Delay is 7.

4.5.4 DRAM RAS# to CAS# Delay

This option allows you to insert a delay between the RAS (Row Address Strobe) and CAS (Column Address Strobe) signals. This delay occurs when the SDRAM is written to, read from or refreshed. Reducing the delay improves the performance of the SDRAM.

4.5.5 DRAM RAS# Precharge

This option sets the number of cycles required for the RAS to accumulate its charge before the SDRAM refreshes. The default setting for the Active to Precharge Delay is 3.

4.5.6 DRAM Data Integrity Mode

Select ECC if your memory module supports it. The memory controller will detect and correct single-bit soft memory errors. The memory controller will also be able to detect double-bit errors though it will not be able to correct them. This provides increased data integrity and system stability.

4.5.7 MGM Core Frequency

This field sets the frequency of the DRAM memory installed. The default setting is Auto Max 266MHz.

4.5.8 System BIOS Cacheable

The setting of Enabled allows caching of the system BIOS ROM at F0000h-FFFFFh, resulting in better system performance. However, if any program writes to this memory area, a system error may result.

4.5.9 Video BIOS Cacheable

The Setting Enabled allows caching of the video BIOS ROM at C0000h-C7FFFh, resulting in better video performance. However, if any program writes to this memory area, a system error may result.

4.5.10 Memory Hole At 15M-16M

In order to improve performance, certain space in memory can be reserved for ISA cards. This memory must be mapped into the memory space below 16 MB. The choices are Enabled and Disabled.

4.5.11 Delayed Transaction

The chipset has an embedded 32-bit posted write buffer to support delay transactions cycles. Select Enabled to support compliance with PCI specification version 2.1.

4.5.12 Delay Prior to Thermal

This field activates the CPU thermal function after the systems boots for the set number of minutes. The options are 16Min and 64Min.

4.5.13 AGP Aperture Size (MB)

The field sets aperture size of the graphics. The aperture is a portion of the PCI memory address range dedicated for graphics memory address space. Host cycles that hit the aperture range are forwarded to the AGP without any translation. The default setting is 64M.

4.5.14 On-Chip VGA

The default setting is Enabled.

4.5.15 On-Chip Frame Buffer Size

The default setting is 32MB. The options available include 1MB, 4MB, 8MB and 16MB.

4.5.16 Boot Display

The default setting is CRT+LVDS. The options available include CRT, LVDS, DVI and TV.

4.5.17 Panel Number

These fields allow you to select the LCD Panel type. The setting values for these ports are:

640 x 480 18bit SC

800 x 600 18bit SC

1024 x 768 18bit SC

1280 x 1024 24bit SC

1400 x 1050 18bit SC

1024 x 768 24bit SC

1600 x 1200 24bit SC

4.6 Integrated Peripherals

This section sets configurations for your hard disk and other integrated peripherals. The first screen shows three main items for user to select. Once an item selected, a submenu appears. Details as follows.

The item of "Watch Dog Timer" is special design for DSA-3400, user could change the item to setup 10 seconds,20sec,30sec etc. User could install the WDT sample program to enable the Watch Dog Timer for specific application.

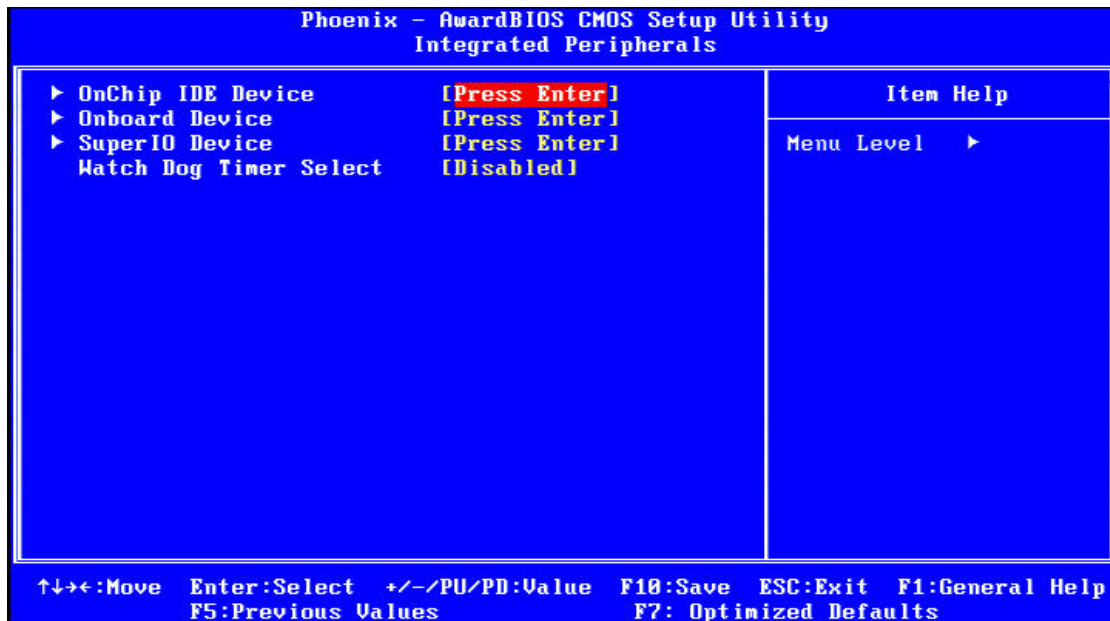


Figure 4.5: Integrated Peripherals

4.6.1 On-Chip Primary PCI IDE

Some UDMA cables use a hole in the ribbon cable as a cable detect mechanism to determine if a UDMA IDE or standard IDE cable is installed. The default setting is "Enabled".

4.6.2 IDE Master/Slave PIO/UDMA Mode,

IDE Primary (Secondary) Master/Slave PIO/UDMA Mode (Auto) Each channel (Primary and Secondary) has both a master and a slave, making four IDE devices possible. Because each IDE device may have a different Mode timing (0, 1, 2, 3, 4), it is necessary for these to be independent. The default setting "Auto" will allow auto-detection to ensure optimal performance.

4.6.3 On-Chip Secondary PCI IDE

If you enable IDE HDD Block Mode, the enhanced IDE driver will be enabled. Leave IDE HDD Block Mode on the default setting.

4.6.4 IDE HDD Block Mode

You can enable the Primary IDE channel and/or the Secondary IDE channel. Any channel not enabled is disabled. This field is for systems with only SCSI drives.

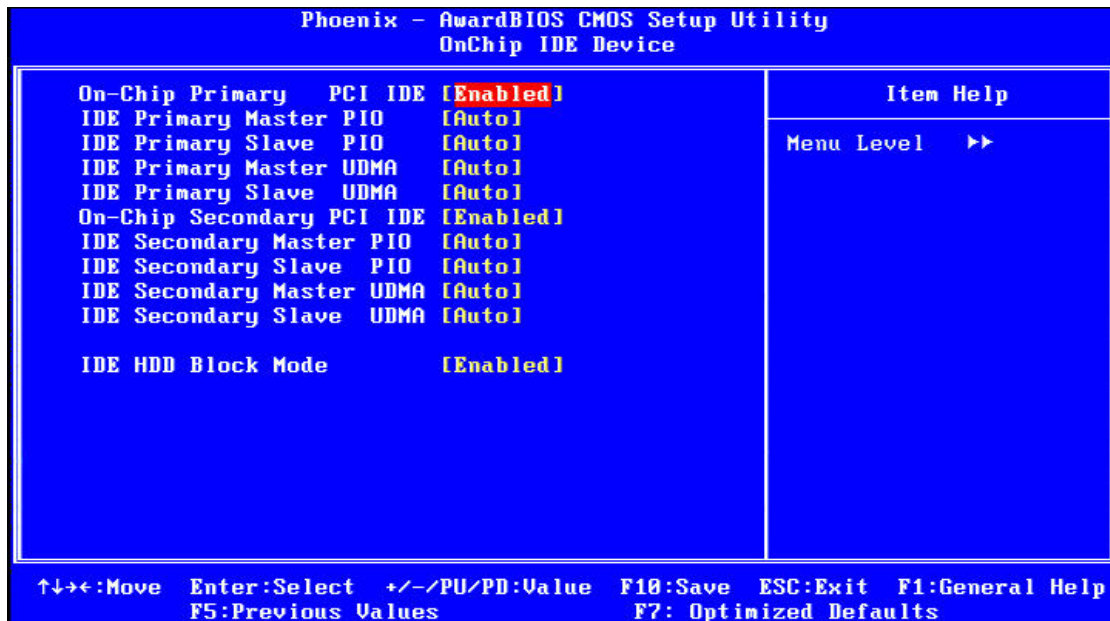


Figure 4.6: OnChip IDE Device

4.6.5 USB/USB 2.0 Controller

Select Enabled if your system contains a Universal Serial Bus (USB) controller and you have USB peripherals. The choices: Enabled, Disabled.

4.6.6 USB Keyboard/Mouse Support

Select Enabled if user plan to use an USB keyboard. The choice: Enabled, Disable.

4.6.7 AC97 Audio/Modem

Select Disable if you do not want to use AC-97 audio/Modem. Option is Auto, Disable.

4.6.8 Init Display First

This item allows you to choose which one to activate first, PCI Slot or onchip VGA. The choices: PCI Slot, Onboard/AGP.

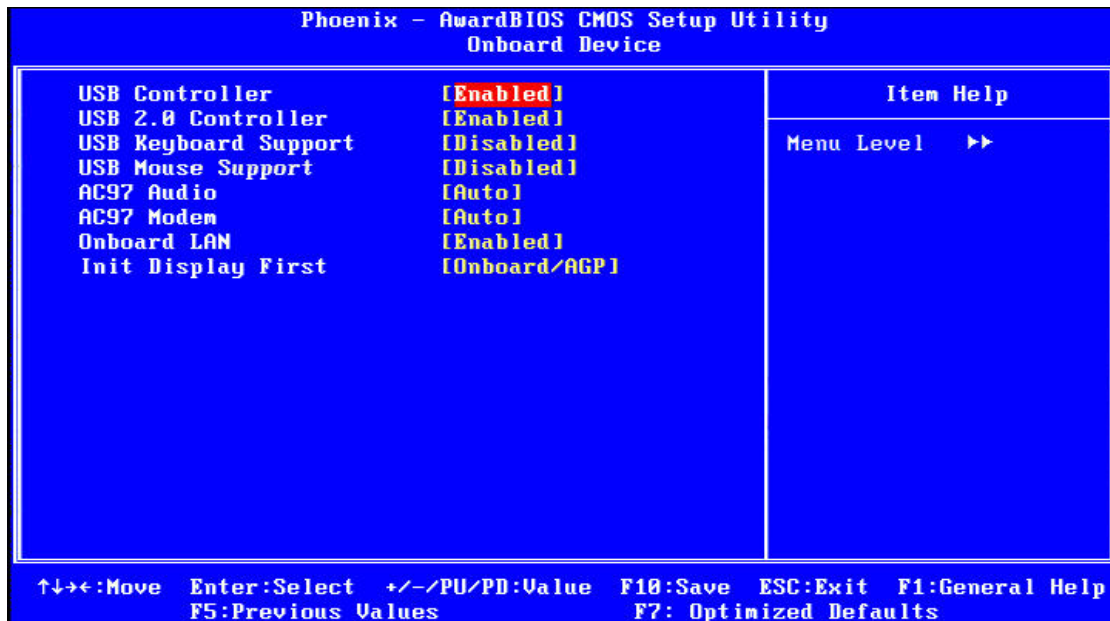


Figure 4.7: Onboard Device

4.6.9 Onboard LAN Control

Option is Enable and Disable. Select Disable if user does not want to use onboard LAN controller

4.6.10 Onboard FDC Controller

When enabled, this field allows you to connect your floppy disk drives to the onboard floppy disk drive connector instead of a separate controller card. If you want to use a different controller card to connect the floppy disk drives, set this field to Disabled.

4.6.11 Onboard Serial Port

For settings reference the Appendix for the serial resource allocation, and Disabled for the on-board serial connector.

4.6.12 UART Mode Select

This item allows you to select UART mode. The choices: IrDA, ASKIR, Normal.

4.6.13 RxD, TxD Active

This item allows you to determine the active of RxD, TxD. The Choices: "Hi, Hi," "Lo, Lo," "Lo, Hi," "Hi, Lo."

4.6.14 IR Transmission Delay

This item allows you to enable/disable IR transmission delay. The choices: Enabled, Disabled.

4.6.15 UR2 Duplex Mode

This item allows you to select the IR half/full duplex function. The choices: Half, Full.

4.6.16 Onboard Parallel Port

This field sets the address of the on-board parallel port connector. You can select either 3BCH/IRQ7, 378H/IRQ7, 278H/IRQ5 or Disabled. If you install an I/O card with a parallel port, make sure there is no conflict in the address assignments. The CPU card can support up to three parallel ports, as long as there are no conflicts for each port.

4.6.17 Parallel Port Mode

This field allows you to set the operation mode of the parallel port. The setting "Normal" allows normal speed operation, but in one direction only. "EPP" allows bi-directional parallel port operation at maximum speed. "ECP" allows the parallel port to operate in bi-directional mode and at a speed faster than the maximum data transfer rate. "ECP + EPP" allows normal speed operation in a two-way mode.

4.6.18 EPP Mode Select

This field allows you to select EPP port type 1.7 or 1.9. The choices: EPP1.7, 1.9.

4.6.19 ECP Mode Use DMA

This selection is available only if you select "ECP" or "ECP + EPP" in the Parallel Port Mode field. In ECP Mode Use DMA, you can select DMA channel 1, DMA channel 3, or Disable.

Leave this field on the default setting.

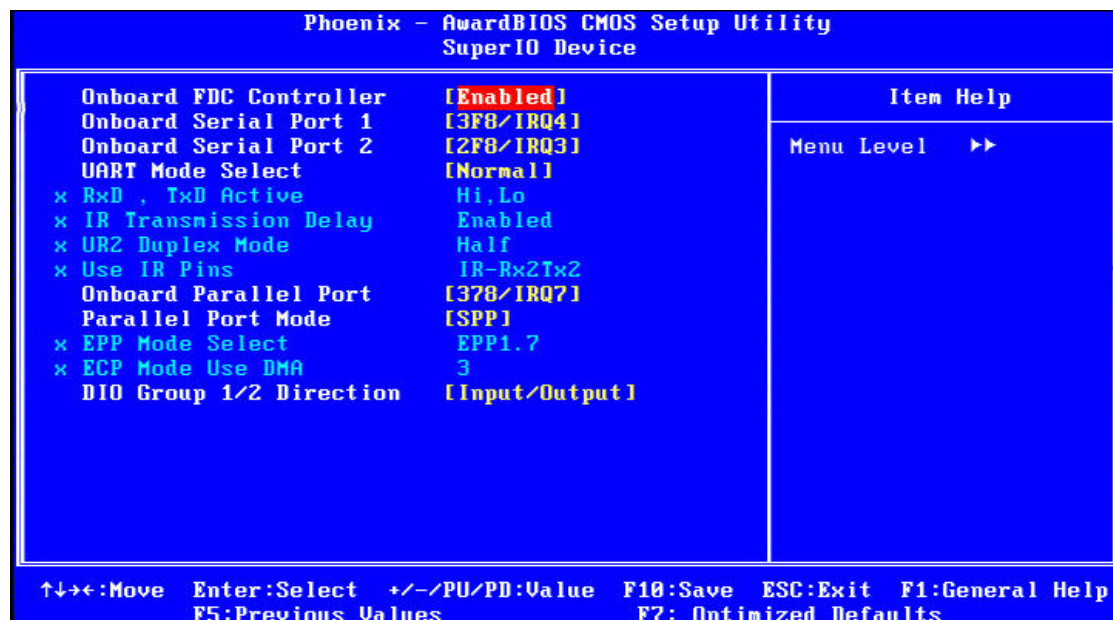


Figure 4.8: SuperIO Device

4.7 Power Management Setup

The power management setup controls the CPU card's "green" features to save power. The following screen shows the manufacturer's defaults:

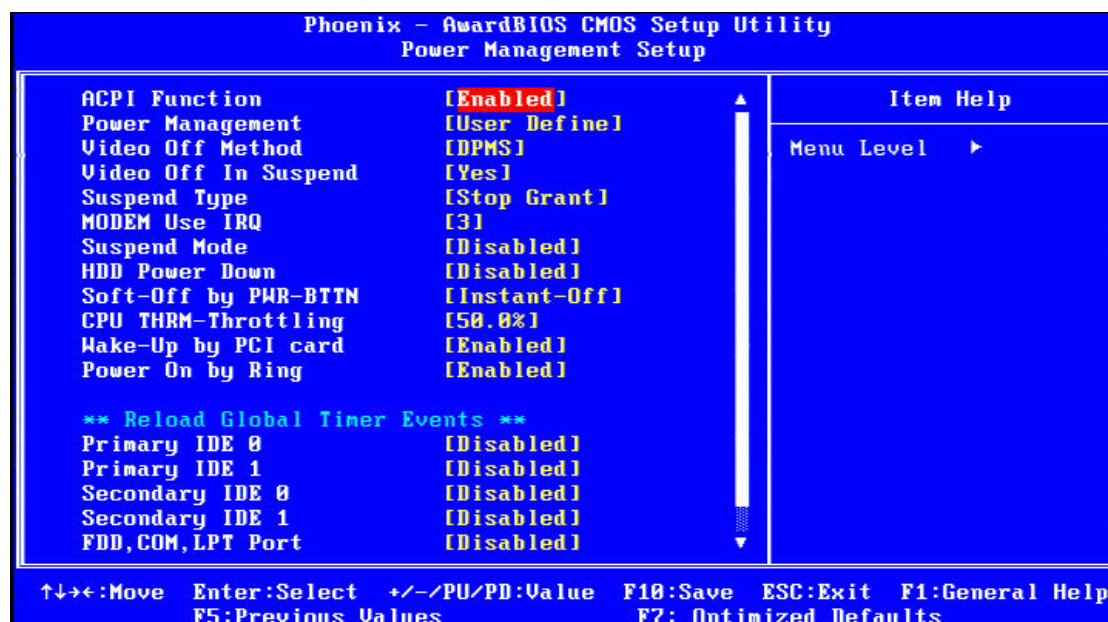


Figure 4.6: Power management setup screen

4.7.1 ACPI function

The choice: Enabled, Disabled.

4.7.2 Power Management

This category allows you to select the type (or degree) of power saving and is directly related to the following modes:

1. HDD Power Down
2. Suspend Mode

There are four selections for Power Management, three of which have fixed mode settings

Min. Power Saving	Minimum power management., Suspend Mode = 1 hr., and HDD Power Down = 15 min.
Max. Power Saving	Maximum power management., Suspend Mode = 1 min., and HDD Power Down = 1 min.
User Defined (Default)	Allows you to set each mode individually. When not disabled, each of the ranges are from 1 min. to 1 hr. except for HDD Power Down which ranges from 1 min. to 15 min. and disable.

Table 4.1 BIOS Power Management setting

4.7.3 Video Off In Suspend

When system is in suspend, video will turn off.

4.7.4 Modem Use IRQ

This determines the IRQ in which the MODEM can use. The choices: 3, 4, 5, 7, 9, 10, 11, NA.

4.7.5 HDD Power Down

You can choose to turn the HDD off after one of the time intervals listed, or when the system is in "suspend" mode. If the HDD is in a power saving mode, any access to it will wake it up.

4.7.6 Soft-Off by PWR-BTTN

If you choose "Instant-Off", then pushing the ATX soft power switch button once will switch the system to "system off" power mode. You can choose "Delay 4 sec." If you do, then pushing the button for more than 4 seconds will turn off the system, whereas pushing the button momentarily (for less than 4 seconds) will switch the system to "suspend" mode.

4.7.7 CPU THRM-Throttling

This field allows you to select the CPU THRM-Throttling rate. The choices: 12.5%, 24.0%, 37.5%, 50.0%, 62.5%, 74.0%, 87.5%.

4.7.8 PowerOn By LAN

This item allows you to wake up the system via LAN from the remote host. The choices: Enabled, Disabled.

4.7.9 PowerOn By Modem

When Enabled an input signal on the serial Ring Indicator (RI) line (in other words, an incoming call on the modem) awakens the system from a soft off state. The choices: Enabled, Disabled.

4.7.10 PowerOn By Alarm

When Enabled, you can set the date and time at which the RTC (real time clock) alarm awakens the system from Suspend mode. The choices: Enabled, Disabled.

4.7.11 Primary IDE 0 (1) and Secondary IDE 0 (1)

When Enabled, the system will resume from suspend mode if Primary IDE 0 (1) or Secondary IDE 0 (1) is active. The choice: Enabled, Disabled.

4.7.12 FDD, COM, LPT PORT

When Enabled, the system will resume from suspend mode if FDD, COM port, or LPT port is active. The choice: Enabled, Disabled.

4.7.13 PCI PIRQ [A-D]#

When Enabled, the system will resume from suspend mode if interrupt occurs. The choice: Enabled, Disabled.

4.8 PnP/PCI Configurations

4.8.1 PnP OS Installed

Select "Yes" if you are using a plug and play capable operating system.

Select No if you need the BIOS to configure non-boot device

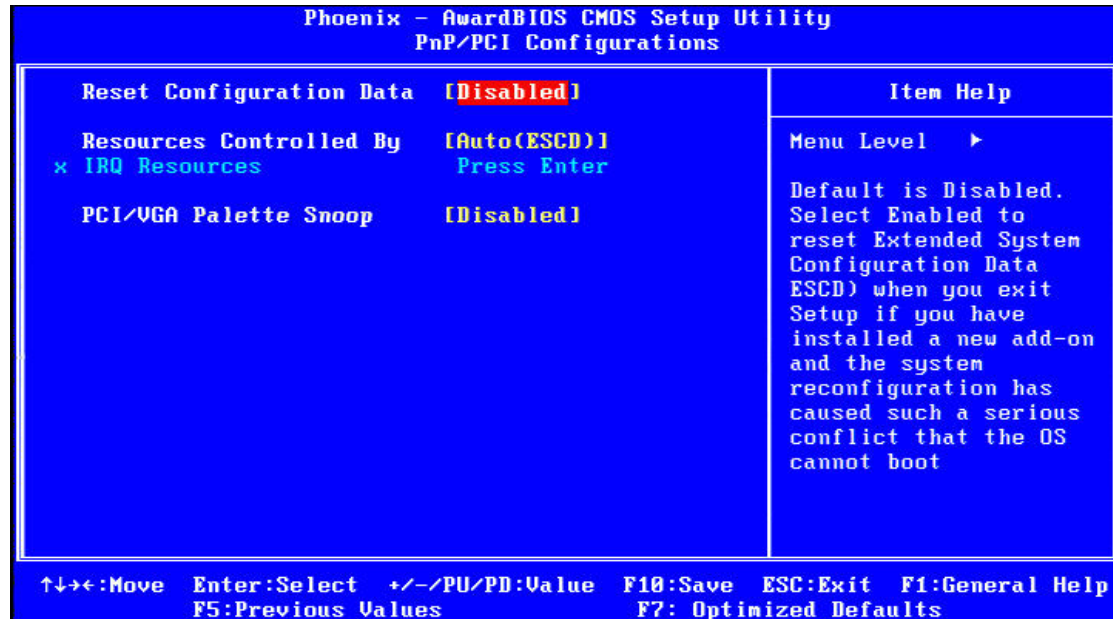


Figure 4.7: PnP/PCI configurations screen

4.8.2 Reset Configuration Data

Default is Disable. Select Enable to reset Extended System Configuration Data (ESCD) if you have installed a new add-on and system configuration has caused such a conflict that OS cannot boot.

4.8.3 Resources controlled by:

The commands here are "Auto" or "Manual." Choosing "manual" requires you to choose resources from each following sub-menu. "Auto" automatically configures all of the boot and Plug and Play devices but you must be using Windows 95 or above.

4.8.4 PCI/VGA Palette Snoop

This is left at "Disabled."

4.9 Password Setting

To change the password:

1. Choose the "Set Password" option from the "Initial Setup Screen" menu and press <Enter>.

The screen will display the following message:

Please Enter Your Password

Press <Enter>.

2. If the CMOS is good or if this option has been used to change the default password, the user is asked for the password stored in the CMOS. The screen will display the following message:

Please Confirm Your Password

Enter the current password and press <Enter>.

3. After pressing <Enter> (ROM password) or the current password (user-defined), you can change the password stored in the CMOS. The password must be no longer than eight (8) characters.

Remember, to enable the password setting feature, you must first select either "Setup" or "System" from the "Advanced BIOS Features" menu.

4.10 Save & Exit Setup

If you select this and press <Enter>, the values entered in the setup utilities will be recorded in the CMOS memory of the chipset. The microprocessor will check this every time you turn your system on and compare this to what it finds as it checks the system. This record is required for the system to operate.

4.11 Exit Without Saving

Selecting this option and pressing <Enter> lets you exit the setup program without recording any new values or changing old ones.

System Setup

This chapter details the needed driver installation for DSA-3400

Sections include:

- Installation of chipset driver
- Installation of graphic driver
- Installation of LAN driver
- Installation of audio driver

Chapter 5 System Setup

5.1 Introduction

The system has an onboard Intel 852GME chipset for its graphic controller. It supports conventional analog CRT monitors and LCD displays with 64MB frame buffer shared with system memory. The VGA controller can drive CRT displays with resolutions up to 1600 x1200@85 Hz and 2048 x 1536 @ 75 Hz.

5.1.1 CMOS setting for panel type

The DSA-3400 system BIOS and custom drivers are located in a Flash ROM device, designated U26 of system motherboard of DSA-3400. A single Flash chip holds the system BIOS, VGA BIOS and network Boot ROM image. The display can be configured via CMOS settings. This method Choice of “Boot display” selection items of Advanced Chipset Features sections of Award BIOS Setup.

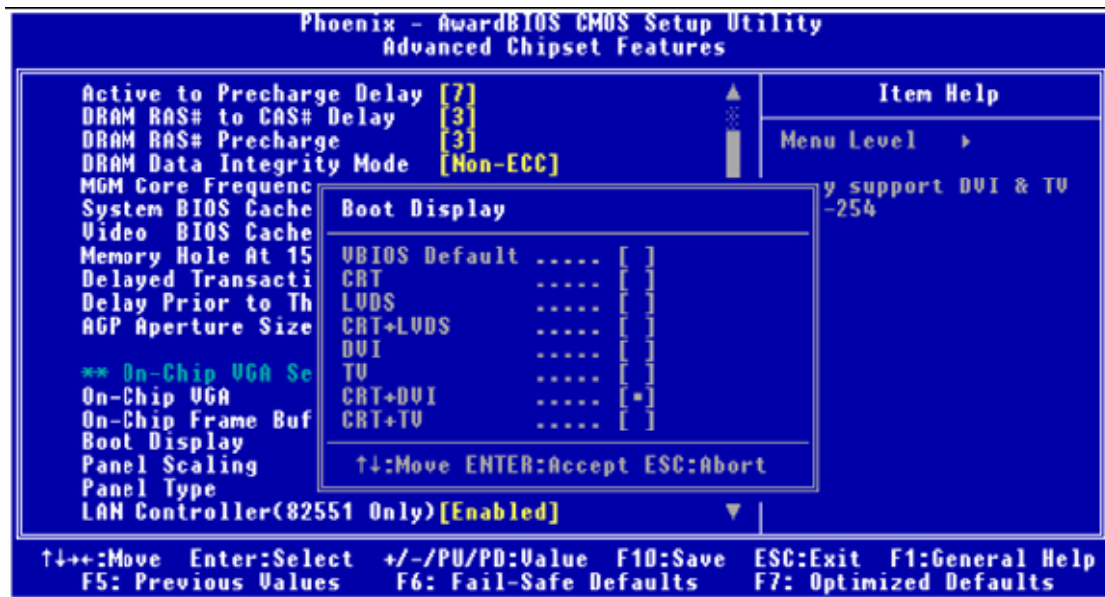


Figure 5.1: Advanced Chipset features screen

5.1.2 Display type

The DSA-3400 can be set only in a VBIOS Default, CRT and TV mode. The system is initially set to “VBIOS Default”.

5.1.3 Disable of Dual Independent Display

The DSA-3400 uses an Intel 852GME controller that is capable of providing multiple views and simultaneous display with mixed video and graphics on a flat panel and CRT.

5.2 Installation of needed driver

5.2.1 Installation of a licensed Windows OS

Before installing the needed driver, you should complete the installation of a licensed Windows operating system –Windows®XP, Windows®XP embedded or Win®2K first.

5.2.2 Installation of chipset driver.

The chipset driver is under the path:

DSA-3400 Utility CD : \\DSA-3400 Driver\Intel_855GME_852GM\Chipset

Please follow and pay attention to the installation instructions which appear on your screen, and complete the chipset driver installation.

5.2.3 Install the graphic driver

Find the graphic driver from CD at the directory of **DSA-3400 Utility CD** : \

DSA-3400 Driver\Intel_855GME_852GM\Graphic

Please follow and pay attention to the installation instructions which appear on your screen, and complete the graphic driver installation.

5.2.4 Install the LAN driver

Find the LAN driver from CD at the directory of **DSA-3400 Utility CD** : \

DSA-3400 Driver \Lan-Intel Pro1000MT\82551QM

Please follow and pay attention to the installation instructions which appear on your screen, and complete the LAN driver installation.

5.2.5 Install the audio driver

Find the audio driver from CD at the directory of **DSA-3400 Utility CD** : \

DSA-3400 Driver\Audio Driver\Realtek_AC97_ALC202\WDM_A386

Please follow and pay attention to the installation instructions which appear on your screen, and complete the audio driver installation.

5.2.6 Install the Wireless module driver (only Wireless option)

Find the wireless module driver from CD at the directory of **DSA-3400 Utility CD : **

DSA-3400 Option Model Driver\RAlink Wireless Network Card Driver

Please follow and pay attention to the installation instructions which appear on your screen, and complete the wireless module driver installation.

5.2.7 Install the TV Tuner driver (only TV tuner option)

Find the TV tuner driver from CD at the directory of **MPC788 CD : \setup**

Please follow and pay attention to the installation instructions which appear on your screen, and complete the TV tuner driver installation.