



Bluetooth USB Module

BUB-204B

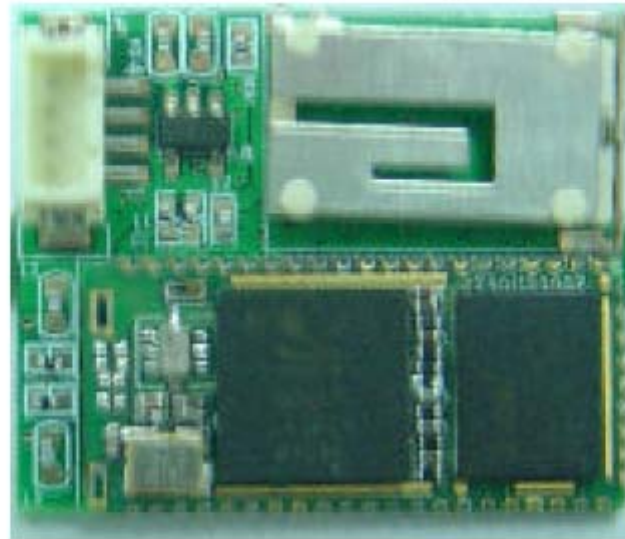
Operation Manual

Date : 12/07/2006

Version : V1.2

Atrie ATRIE
TECHNOLOGY INC.

(Original.  C-COM CORPORATION)



BUB-204B

Bluetooth™ Module



BUB-204B

C-COM Bluetooth USB Module

Wire harness, 1.25/4P/157128L.80mm



Test Setup

Table of Contents

1. Overview.....	5
2.System Requirements and Operating System Platforms	5
3. Installing BlueSuite & Widcomm Software	5
4.Utilities in BlueSuite	6
4.1 BlueFlash.....	6
4.1.1 BlueFlash User interface	7
4.1.2 BlueFlash Firmware	9
4.2 PSTools	10
4.2.1 Access Levels	10
4.2.2 PSTools Transport Interface	11
4.2.3 Changing Transport Interface	12
4.2.4 PSTools User interface	14
4.3 BlueChat2	15
4.3.1 BlueChat2 User Interface	16
5 .Technical Support.....	20

1. Overview

The unit features the following:

- Test Board containing host I/O and man-machine interface elements including RS232 and USB drivers and external connector, audio codec and external audio socket for a headset, plus internal connectors for PIO lines, audio PCM stream and synchronous serial interfaces.
- Module, which includes the following items:
 - BlueCore chip (an advanced single-chip Bluetooth device) including Flash memory device (which stores BlueCore' s firmware and Persistent Store)
 - RF SMA connector (which allows communication with other Bluetooth devices)

2. System Requirements and Operating System Platforms

Minimum system requirements for the Casira utilities are:

- Pentium processor-based personal computer
- 64MB of RAM is recommended
- 10MB of available hard disk space

Utilities can be used on the following operating systems:

- Microsoft Windows 98⁽¹⁾
- Microsoft Windows Me⁽¹⁾
- Microsoft Windows 2000
- Microsoft Windows NT v4.0 (Service Pack 3 or later)
- Microsoft Windows XP

AC Adaptor :

Output +5V, DC, 300mA

3. Installing BlueSuite & Widcomm Software

Run the installer supplied on the accompanying CD ROM, pls contact sales.

4.Utilities in BlueSuite

- **BlueFlash** upgrades the BlueCore firmware.
- **PSTools** edits the PS Keys.
- **BlueChat2** creates simple ACL and SCO connections (HCI firmware only).
- **BlueTest** exercises the radio for test purposes.

4.1 BlueFlash

BlueFlash is a utility that allows you to download and upload firmware to and from the flash memory on the Bluetooth modules .From Fig(2), we can insert SPI cable to connector , then link to parallel port of Host terminals (like Desktop PC , Notebook or Pocket PC)

4.1.1 BlueFlash User interface

BlueFlash opens with a user interface windows as Figure 4.1 indicates .

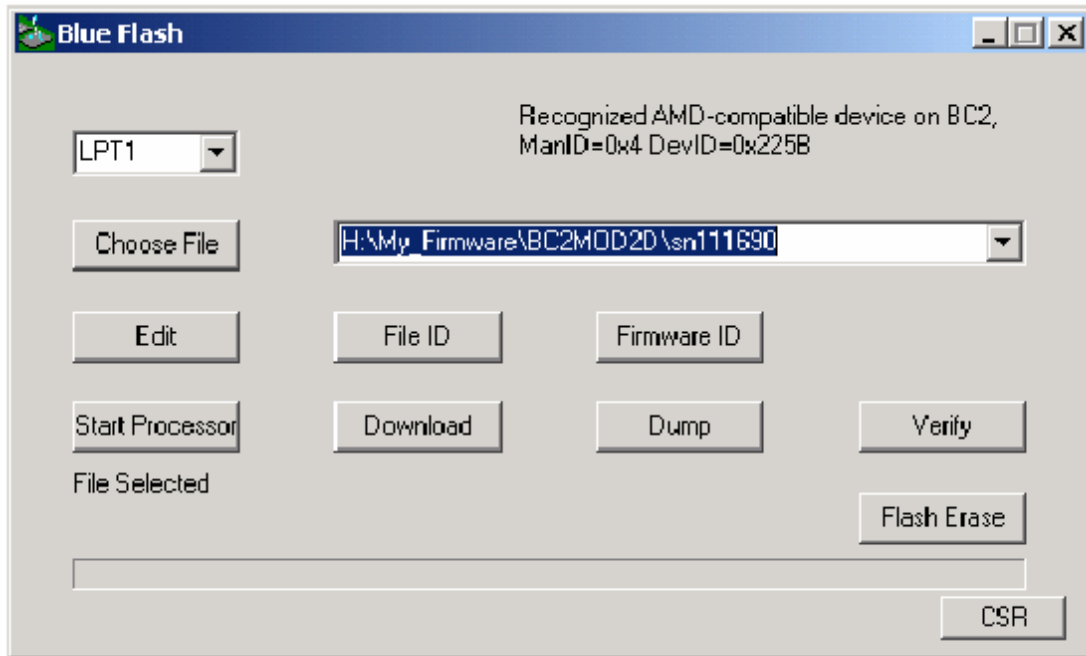


Figure 4.1: BlueFlash User Interface

The function of each button or area is described as follows:

Choose File : Opens a dialogue box for selection of the *.xpv file to download to the flash on the BlueCore Module.

(Note: The .xdv file must be present in the same folder as the .xpv file. Edit: Opens a hexadecimal-editing window. CSR recommends that you do not edit the *.xpv file in any way. If the code is edited, the Bluetooth protocol stack may behave erratically and it may no longer be Bluetooth qualified.)

Download: Downloads the selected file to the flash on the BlueCore module. This process will update each flash block as required and verify them in turn.

Verify: Compares the selected file with the code programmed into the flash on the BlueCore module. Any differences will be reported in the status area.

Status : Provides a text report of the status of the current download, upload or verify.

Activity Bar : Displays a visual indication of progress for the current download, upload or verification.

Start Processor: Changes depending on the status of the processor. If it says **Stop Processor**, the processor is running. It should be stopped before attempting to download code. Once the new code has been loaded, the processor can be restarted by clicking on **Start**

Processor.

Firmware ID: Identifies which version of firmware is currently loaded on the module. BlueFlash does not identify firmware created before Beta 10 release. If BlueFlash is unable to identify the firmware version, you will still be able to upgrade the firmware using this utility.

Dump: Allows the user to download the contents of the flash to a file on the PC hard drive. The data can be stored either as BlueCore .xpv/.xdv files or as a binary file. The file also contains all of the Persistent Store settings, allowing you to restore to a known firmware build and Persistent Store settings.

Flash Erase: Provides options for erasing some or all of the flash memory including the Persistent Store area.

File ID: Displays the name and version of firmware of the file selected for download on the module.

File Selection: This area displays the name and location of the file selected for download.

Flash Type : This area displays the type of flash memory that has been identified on the BlueCore module. Flash type is identified when the processor is stopped. Different types of flash memory may have different memory block structures that require adjustments to BlueCore's memory map. If the flash type indicates `Unrecognised Flash assuming SST`, either the flash on the BlueCore module is not supported, or there is a problem with the SPI connection. See section 5.1.3, *Troubleshooting BlueFlash*, for further information.

LPT Selection: This pull-down menu allows the user to select the LPT port to which the SPI cable is connected.

CSR: This indicates the version of the BlueFlash application in use.

4.1.2 BlueFlash Firmware

There are four possible components in a firmware file:

- **Stack:** This is the main runtime code for BlueCore. There are two versions of stack, one contains all stack layers up to HCI, plus an HCI version of the Virtual Machine (VM); the other contains stack layers up to HCI, plus L2CAP, RFCOMM, SDP and the Virtual Machine (an RFCOMM version). Both stack versions uses both program and data space.
- **DFU Driver:** Device Firmware Upgrade allows for updating the stack, Persistent Store and VM application over the HCI transport. You cannot use a DFU operation to upgrade the DFU driver.
- **Persistent Store:** The Persistent Store holds all the setup and calibration information for module .Most settings are design-specific, but some are module specific.

BlueFlash firmware is held in *.xpv files (which correspond to the program space) and *.xdv files (which correspond to the data space). There is a single *.dfu file for DFU. Not all files contain all firmware components.

Downloading a firmware file only to flash memory overwrites the components contained in the file; all others remain intact. This affects only the calibration information in the Persistent Store. Downloading to flash memory ensures that you can return the module to a known calibrated state if the Persistent Store becomes corrupted beyond repair.

If firmware with no Persistent Store component is downloaded onto a blank flash, the stack code will create a new Persistent Store using default values suitable for use on a Casira module. However, some keys will require calibration per module for optimal performance.

The **Verify** function compares the contents of a firmware file to the contents of flash memory and reports any differences (comparing only components contained in the file).

4.2 PSTools

PSTools is an editing suite that allows you to read and modify the Persistent Store. The Persistent Store consists of configuration keys that modify the operation of the firmware. BlueCore is a very flexible device with many setup options. PS Keys must be set correctly for BlueCore to work in a particular design.

Some PS Keys must be calibrated for each module.

Important Notes:

Do not modify Persistent Store values unless you have a clear understanding of what they do. Careless changes to the Persistent Store could prevent the firmware from executing correctly or can stop module from communicating with the PC.

4.2.1 Access Levels

PSTools has two customer access levels. At the higher access level, there are more PS Keys available for editing. The customer levels are:

- User: A minimum number of frequently used keys, e.g., UART baud rate
- Developer: All the keys that a developer may need to modify

4.2.2 PSTools Transport Interface

PSTools initially opens with a window that allows you to select the interface used to gain access to the Persistent Store. There are several transport interface options as follows:

SPI BCCMD: We uses the BlueCore Command (BCCMD) Protocol running over the SPI transport layer to edit the Persistent Store. See Figure 4.2.

Important Note:

SPI BCCMD is the recommended method for editing the Persistent Store.

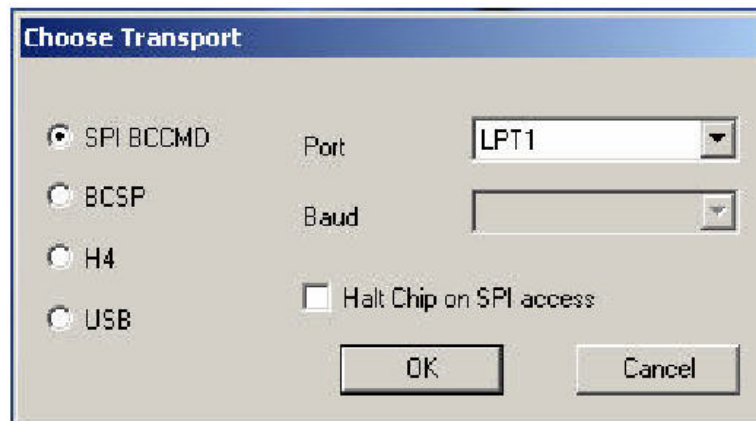


Figure 4.2: SPI BCCMD interface

BCSP: We uses the BCCMD Protocol running over BCSP to edit the Persistent Store. BlueCore must be configured for BCSP via PS Keys. When using this mode, ensure that you are using the correct baud rate

H4: We uses the BCCMD Protocol running over H4 to edit the Persistent Store. BlueCore must be configured for H4 via PS Keys. When using this mode, ensure that you are using the correct baud rate settings.

USB: We can use the BCCMD Protocol running over USB to edit the Persistent Store. BlueCore must be configured for USB via PS Keys.

4.2.3 Changing Transport Interface

To change to USB:

1. Change the Host Interface.

- Select the Host Interface PS Key (505 PSKEY_HOST_INTERFACE).
- Set to `USB link` using the pull-down menu.
- Click on **Set** to update the Persistent Store.

2. Set D+ Pull-Up

- Select the USB d+ Pull-up PIO Line PS Key (720 PSKEY_USB_PIO_PULLUP).
- Set the key to the PIO output that drives the USB D+ pull-up resistor. This is PIO[2] on Casira modules. This key should be set to `0x02`. If no value is present, then no pull-up is used. PIO[0] is used if the value is `0x00`.
- Click on **Set** to update the Persistent Store.

3. Reset BlueCore.

The module is now configured for USB mode.

To change to BCSP:

1. Change the Host Interface.

- Select the Host Interface PS Key (505 PSKEY_HOST_INTERFACE).
- Set to `UART link running BCSP` using the pull-down menu.
- Click on **Set** to update the Persistent Store.

2. Configure the UART interface.

- Select the PSKEY UART configuration bitfield (517 PSKEY_UART_CONFIG).
- Set this value to 6.
- Click on **Set** to update the Persistent Store.

3. Set baud rate.

- Select the UART baud rate PS Key (516 PSKEY_UART_BAUD_RATE).
- Set to the required baud rate (e.g., 115.2 kbaud).
- Click on **Set** to update the Persistent Store.

4. Reset BlueCore.

This configures the BlueCore module to use BCSP over the UART.

The UART configuration Bitfiled key is a presentation key. Setting this to 6 configures the following keys:

- UART: Stop Bits PS Key to `One stop bit`
- UART: Parity Bit PS Key to `Even Parity`
- UART: Hardware Flow Control? PS Key to `Disabled`
- UART: RTS Asserted? PS Key to `False`
- UART: Enable BCSP-specific hardware PS Key to `Enabled`

To change to H4:

1. Change the Host Interface.

- Select the Host Interface PS Key (505 PSKEY_HOST_INTERFACE).
- Set to `UART link running H4` using the pull-down menu.
- Click on **Set** to update the Persistent Store.

2. Configure the UART interface.

- Select the PSKEY UART configuration bitfield (517 PSKEY_UART_CONFIG).
- Set this value to `168`.
- Click on **Set** to update the Persistent Store.

3. Set baud rate.

- Select the UART baud rate PS Key (516 PSKEY_UART_BAUD_RATE).
- Set to the required baud rate (e.g., `115.2 kbaud`).
- Click on **Set** to update the Persistent Store.

4. Reset BlueCore.

This configures the BlueCore module to use H4 over the UART.

The UART configuration Bitfiled key is a presentation key. Set this to `168` configure to the following keys:

- UART: Stop Bits PS Key to `One stop bit`
- UART: Parity Bit PS Key to `No parity`
- UART: Hardware Flow Control? PS Key to `Enabled`
- UART: RTS Asserted? PS Key to `True`
- UART: Enable BCSP-specific hardware PS Key to `False`

4.2.4 PSTools User interface

Once the transport interface has been selected, PSTools opens with a user interface window, as shown in Figure

5.4. The function of each button or area is described as follows:

Persistent Store Key List: This window lists all of the PS Keys that are available at the current access level.

Set: This button programs the values in the data area into the currently selected PS Key.

Delete: This button removes a PS Key from the Persistent Store. If required, the stack will create the key using a default value the next time the stack reboots. Otherwise, the key will continue to be reported in the status area as “Not present”.

Read: Clicking this button reads the value of the selected PS Key into the data area. A read is also performed every time a new PS Key is selected.

Reconnect: This button brings up the transport interface selection window, allowing you to reconnect after resetting or if the transport was disrupted for any reason.

Reset BC: This button resets the BlueCore device. Any changes to the PS Keys will take effect only after the device is reset and the stack reboots.

Close: This shuts down PSTools.

Describe: This button brings up a description of the currently selected PS Key.

Status Area: This area provides details such as PS Key number and Friendly Name or Programmer ID plus the status of the transport interface. If this shows “Entry is not present” for a key that should always be present (such as the Bluetooth Address) then there are probably problems with the transport interface.

Data Area: This area shows the data that is stored in the selected PS Key and allows you to edit it.

Dump: This button allows you to save PS Keys as you choose. PS Keys can be retrieved through the **Merge** function. See Figure 5.4.

Merge: This button opens PS Keys that were saved through **Dump**. See Figure 4.3

Edit Raw: This item allows you to change the default PS Key setting to one of your own preference (e.g., baud rate). **Describe** provides more information about each PS Key setting.

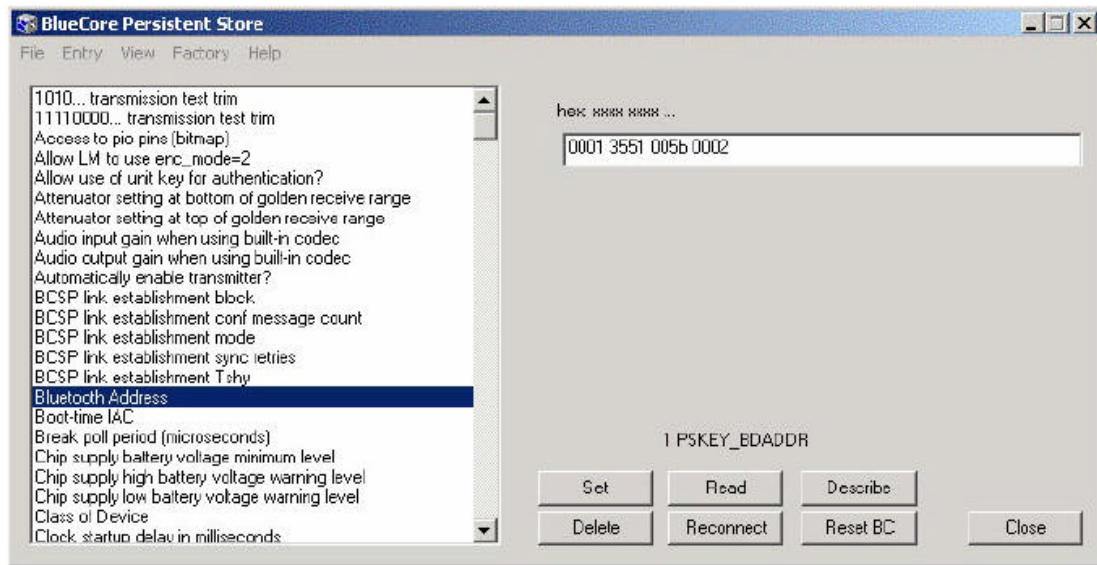


Figure 4.3 : PSTools User Interface

4.3 BlueChat2

BlueChat2 allows users to create an asynchronous connectionless link (ACL) between two devices to send text or a file and add a synchronous connection orientated (SCO) link for a voice connection between the two devices. Users can select between BCSP, H4 (UART), or USB host interfaces.

BlueChat2 was originally conceived as a demonstration/marketing tool. It is not Bluetooth compliant. It should be used only for demonstration and evaluation purposes.

The current version of BlueChat2 can only support a point-to-point connection and will only work with HCI firmware.

4.3.1 BlueChat2 User Interface

BlueChat2 opens with a user interface window, as Figure 4.4 indicates. The function of each button or area is described as follows:

Role: Selects the role for the device as either the master or the slave.

Xfer Type: Selects which type of data is sent.

Chat Link: Used to send and receive text data.

Host Controller Interface Messages: HCI commands and responses are displayed here.

Disconnect: Closes the link between the two devices.

Connect: Establishes a connection to the selected device by setting up an ACL link. If Xfer Type is set to **Audio**, a SCO link is also created.

Inquiry / Cancel Inquiry: If the device is the master, this button controls inquiry for other Bluetooth device in the area. If the local device is selected to be the slave, this button will be greyed out.

Bluetooth Device Address: This lists the address of the local device and, in the pull-down selection box, the addresses of any devices found during an inquiry. Use the selection box to highlight the Bluetooth device to which you wish to connect.

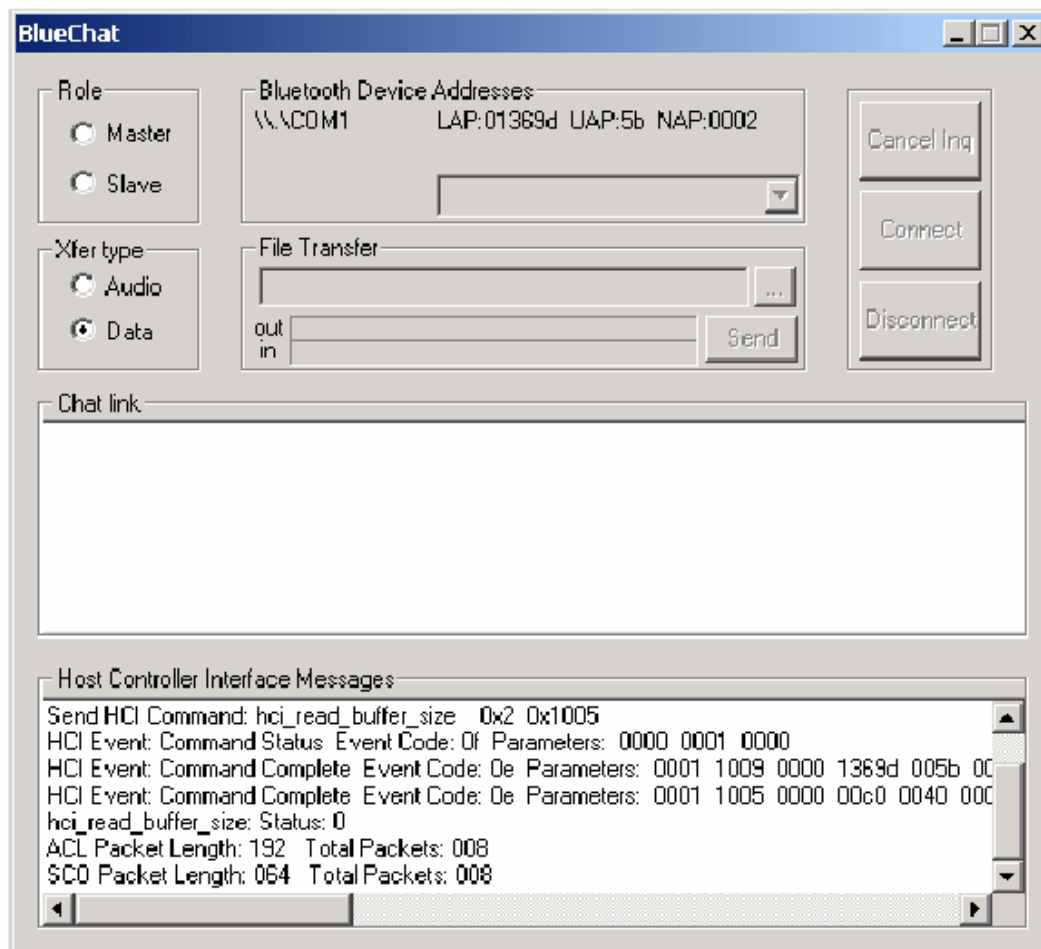


Figure 4.4: SPI BCCMD interface

File Transfer: Active when connected to another device and Xfer Type “Data” is selected. This displays the name and the location of the file to be transferred. There are also status bars that show the progress of files that are being sent or received. Use the send button to start sending the data to the selected Bluetooth device.

Examples

To establish an ACL link:

1. Connect both Casira units to a PC (via their host interface).
2. Power up each Casira unit.
3. For each Casira, open a BlueChat2 utility and select the appropriate protocol and baud rates.
The baud rate must be the same as the current setting of the PSKEY_UART_BAUD_RATE in the Persistent Store. Casira modules are supplied set to SP with a baud rate of 115.200kbps.
4. BlueChat2 will find the local device and display its Bluetooth Device Address in the Device On: field.
5. The HCI window displays the HCI traffic used to configure the device.
6. Select the role of the device. Put one device into Master mode and one into Slave mode.
7. Selecting the Master will allow the **Inquire** button to be used.
8. Selecting the Slave will put the device into Inquiry Scan mode to allow the Master to connect to it.
9. On the Master's BlueChat window, click the **Inquire** button and the Master will perform an inquiry to find any slave devices in the area.
10. After the inquiry is finished (which should take about 20 seconds), the Master will show the addresses of the Bluetooth devices it found during the inquiry. You can cancel the Inquiry at any time by clicking
Cancel Inquiry (any devices found before cancellation will display).
11. Select the address of the Bluetooth device you want to connect to in the Bluetooth Address Box.
12. To connect, click on **Connect**.
13. After connecting, select **Data** in the Xfer type field.
14. You now should have a connection between the two devices. You can send messages through the chat window or transfer files.

To Establish a SCO link:

1. Using PSTools in developer mode, edit the MAP_SCO_OVER_PCM PS Key (427 PSKEY_HOSTIO_MAP_SCO_PCM) and set it to true on both Casiras.
2. Reset Casira.
3. Plug in headsets to Casiras.
4. Follow steps 1 through 8 as for an ACL link above.
5. Select audio in the Xfer field.
6. You now should be able communicate with headsets over an audio SCO link to the other Casira.

Display: Two modes of display can be used to view results. Standard and Bit Error. The Bit Error mode provides a constantly updated table of the BER results. It will work only with BER tests. The standard mode setting is the default and shows a scrolling window containing the individual test results.

Test Results : This field is where the test results are handled.

Test arguments : The arguments and parameters for each test can be viewed or set for some tests.

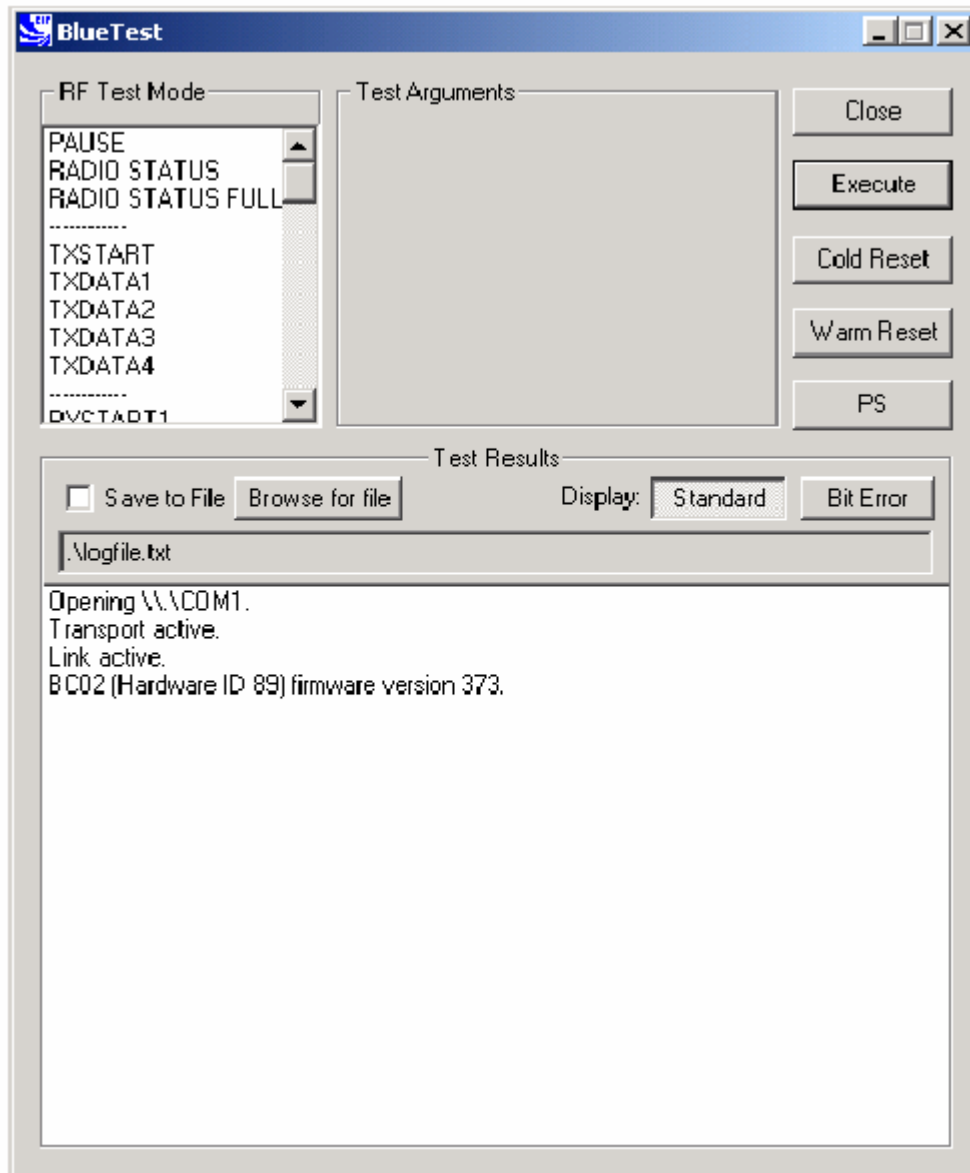


Figure 4.5:BlueTest User Interface

5 .Technical Support

If you encounter difficulties using unit(s), send a detailed e-mail description of your issue. Provide as much information as you can to help resolve your problem quickly.

When contacting technical support, please provide as much useful information as possible. Include the following details in your e-mail:

Your full name (First and Last)

Company name

Company address

Contact phone number

Description of hardware in use

For technical support, pls send e-mail to : michael.liu@c-com.com.tw