

Chapter 4

Getting Connected

4.1 Installing Microsoft ActiveSync

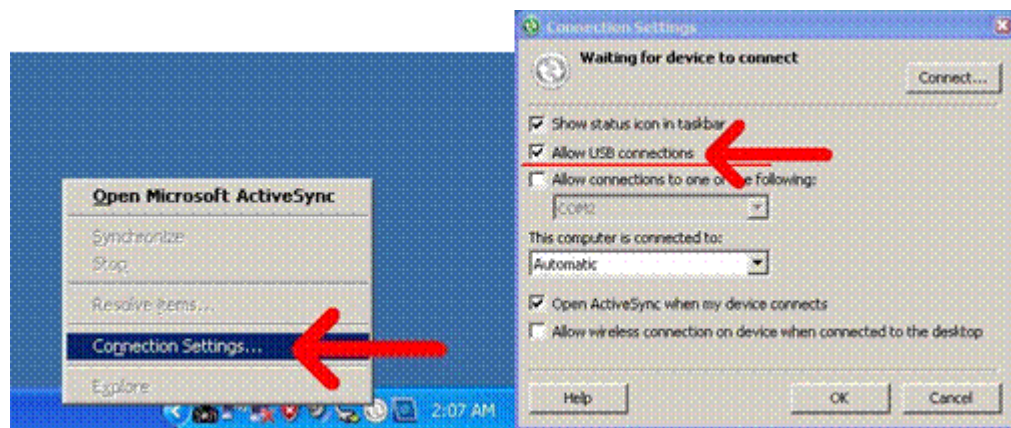
In order to exchange data between your computer and the PWS-440 and install extra applications or utilities to the PWS-440, Microsoft ActiveSync must be installed on your computer. Connect the PWS-440 to a PC using a USB type B cable. Download the latest version of Microsoft ActiveSync from the Microsoft website.

Note! *If you have a previous version of the Microsoft ActiveSync installed in your computer, uninstall it first before installing the latest version of Microsoft ActiveSync.*



4.1.1 Connecting to Your Computer

1. After ActiveSync has been installed, connect the USB B cable to the USB port on your PWS-440.



2. Plug the other end of the USB cable into a USB port on your computer.



3. Turn the device on.
4. ActiveSync starts automatically and configure the USB port to work with the PWS-440.

The New Partnership setup wizard will automatically start.

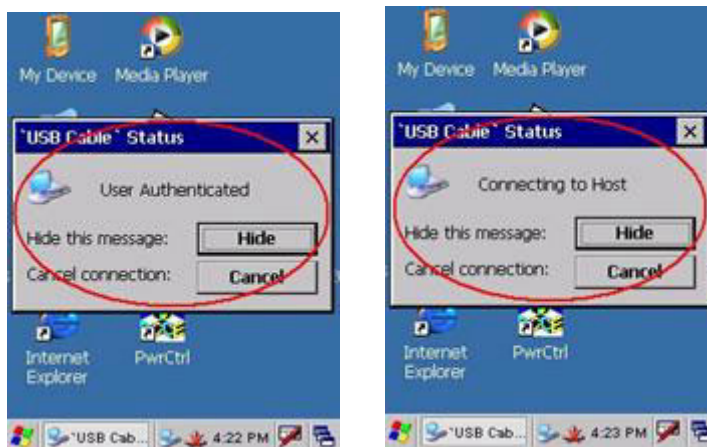
Note! *If ActiveSync doesn't start automatically, click **Start -> Programs -> Microsoft***



ActiveSync.

If a message appears indicating that it is unable to detect a connection, click the **Cancel** button and manually configure the communication settings.

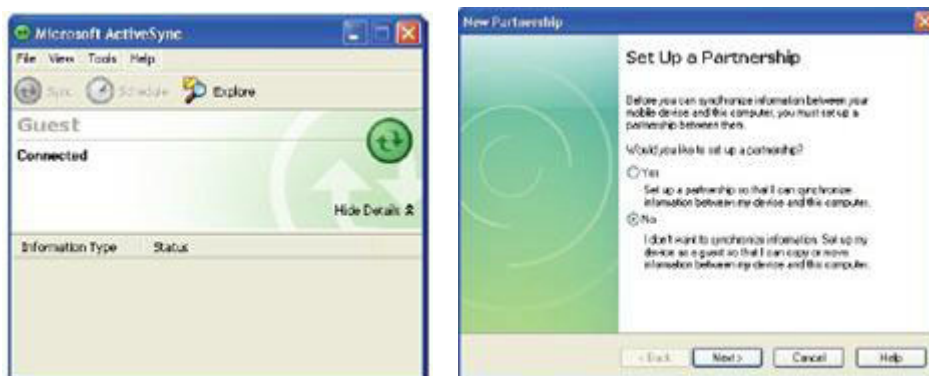
1. Follow the onscreen instructions.



2. When the configuration process is complete, the ActiveSync window appears.



3. Synchronization will be initialized and will take place if you've chosen to synchronize periodically or upon connection.
4. ActiveSync detects the PWS-440 and establishes a connection.

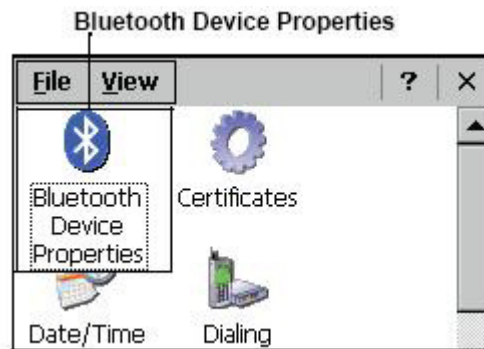


5. Click **No**, and then click **Next**.

4.2 Connecting with Bluetooth

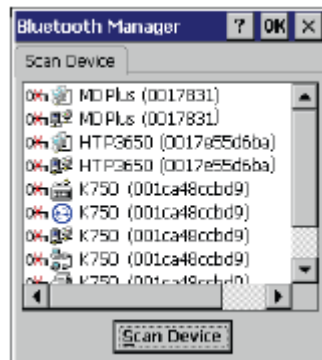
Your device is equipped with Bluetooth wireless technology that you can use to synchronize information with a computer equipped with a Bluetooth adapter or access point. Bluetooth wireless technology allows you to communicate with the computer whenever it is within range. Follow these instructions to set up a Bluetooth connection.

1. Tap **Start ->Settings -> Control Panel** and double-tap **Bluetooth Device Properties**.



The Bluetooth Manager opens.

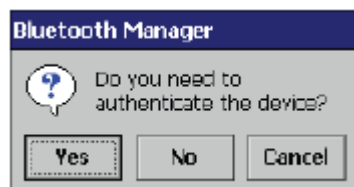
2. Tap Scan Device. Bluetooth Manager scans for local Bluetooth devices and displays a list of all Bluetooth enabled devices within range.



3. Double tap a device in the list to display a context menu.



4. Tap Trusted to add the device to the trusted Bluetooth devices list. You are prompted to authenticate the device. If you want to authenticate the device now, go to step 5. Otherwise, go to step 7.



5. Tap Yes to authenticate the device. You are prompted for the device's pin code. Enabling trusted devices to the Bluetooth manager's list. You can mark the device as trusted without authenticating the device by tapping No when prompted to authenticate the device.



6. Enter the pin code and tap OK to authenticate the device. Tap No to cancel authentication.

Note! *If you enter the wrong pin code, an authentication fail message appears. The red X disappears on the entry's key icon, and the context menu's additional options become available. The additional options are described as follows:*



Trusted: Tap to add or remove the device from the trusted device list. When checked, the red X on the key next to the device is removed.



Active: Tap to make the device active or inactive.

Authenticate: Tap to authenticate the device and add the device to the trusted devices list.

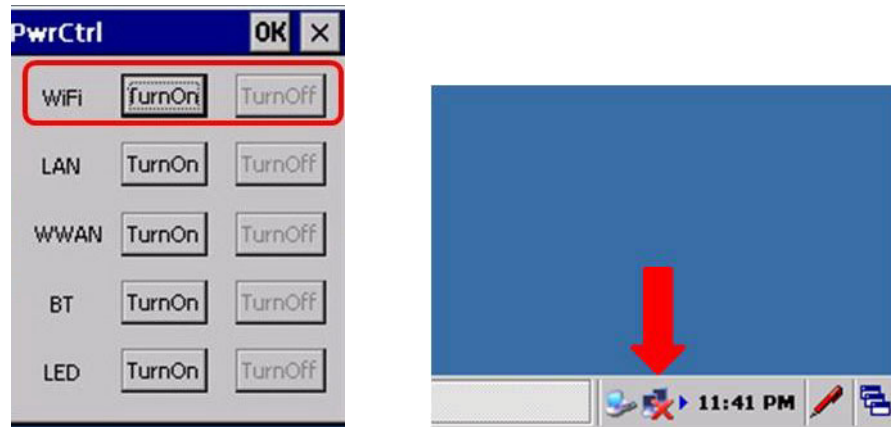
Encrypt: Tap to enable or disable encryption of data transferred between the PWS-440 and a Bluetooth device.

Delete: Deletes the device from the Bluetooth Manager list

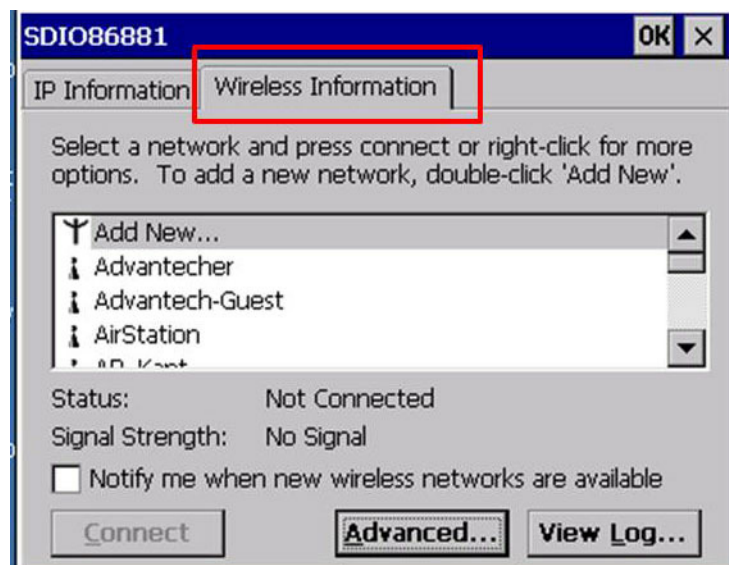
4.3 Connecting to a WLAN (WiFi)

Through a WiFi (wireless) connection you can add a new network, connect to an existing network, change the advanced wireless settings and view wireless networking log information. To establish a WiFi connection, follow the steps below:

1. From **START -> PROGRAM -> Utility -> "PwrCtrl"**, and choose **WLAN "ON"**. Then, click on the **WiFi** icon.

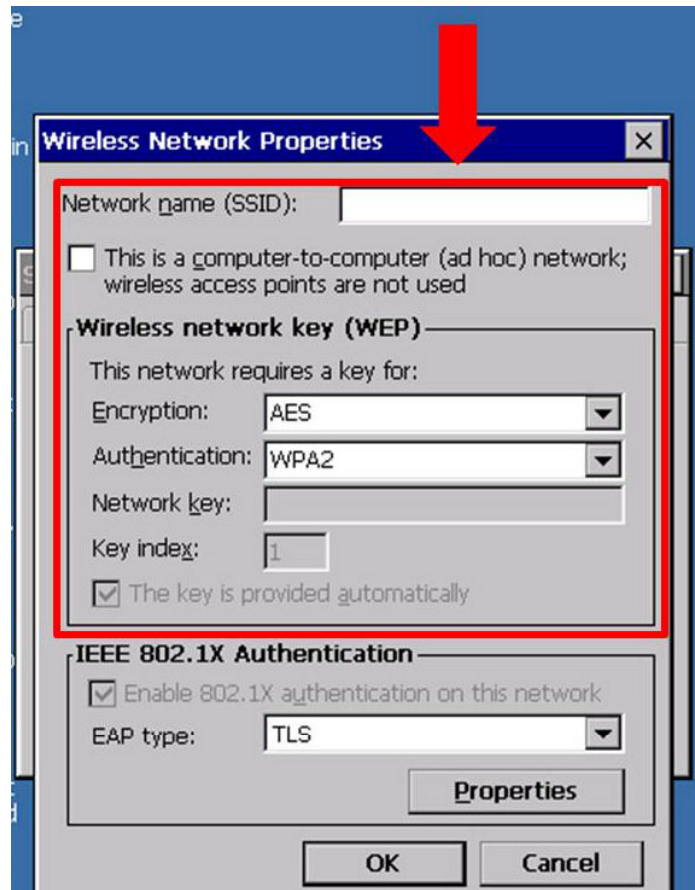


2. Select the **Wireless Information** tab to display the available options.



4.3.1 Add a New Network

1. To add a new network, double-click **Add New**.



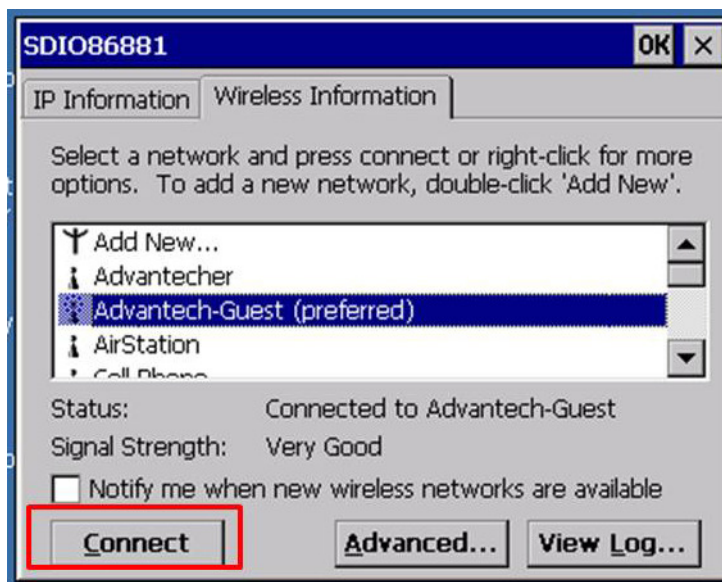
2. When the following screen displays, input the required parameters as explained in the following table:

Parameter	Description
Network name (SSID)	Input the wireless network name.
This is an ad hoc network	Tick the box if required.
Encryption	Select from the drop-down list.
Authentication	Select from the drop-down list.
Network key	Input the network key (if required).
Key index	Input the key index (if required).
EAP type	Select the EAP type.

3. Click **OK** to connect.

4.3.2 Connect to an Existing Network

1. Select a network from the list and press **Connect** or right-click for more options.

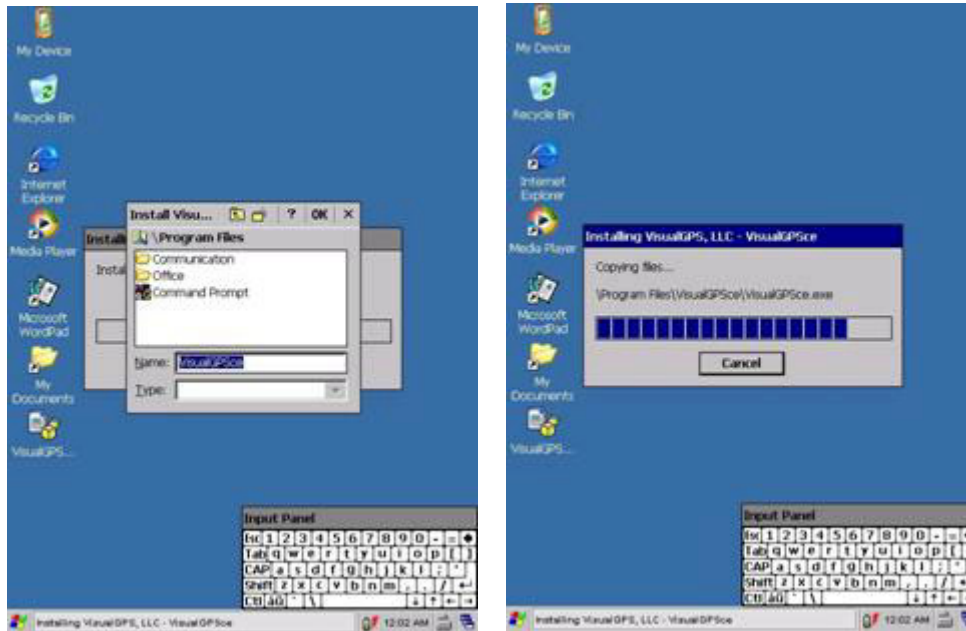


2. Click **OK** to connect.

4.4 Connecting GPS

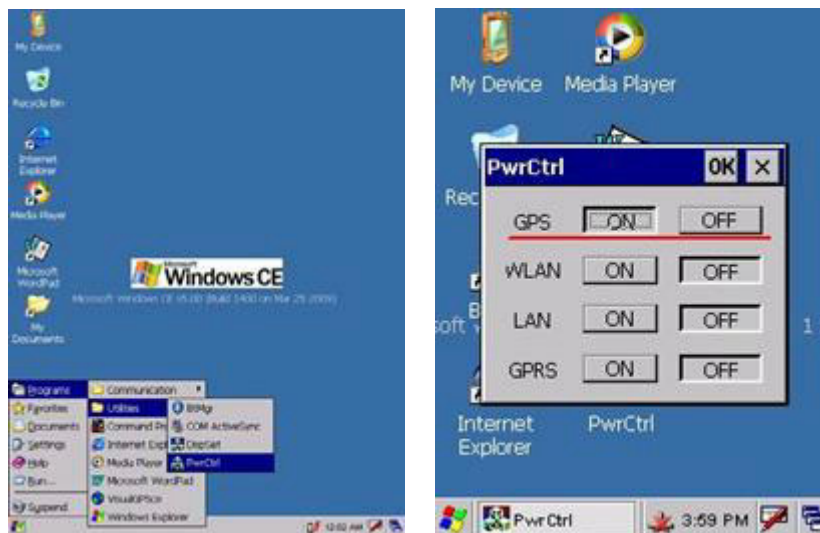
To run GPS Demo program, it need to download VisualGPS from internet. Copy this program onto Deskonchip1 to save, and double tag to install VisualGPS as follow instruction.

Copy “visualGPSceinstall.CAB” to PWS-440 @C Desktop, and execute “visualGPS-ceinstall.CAB” on desktop.

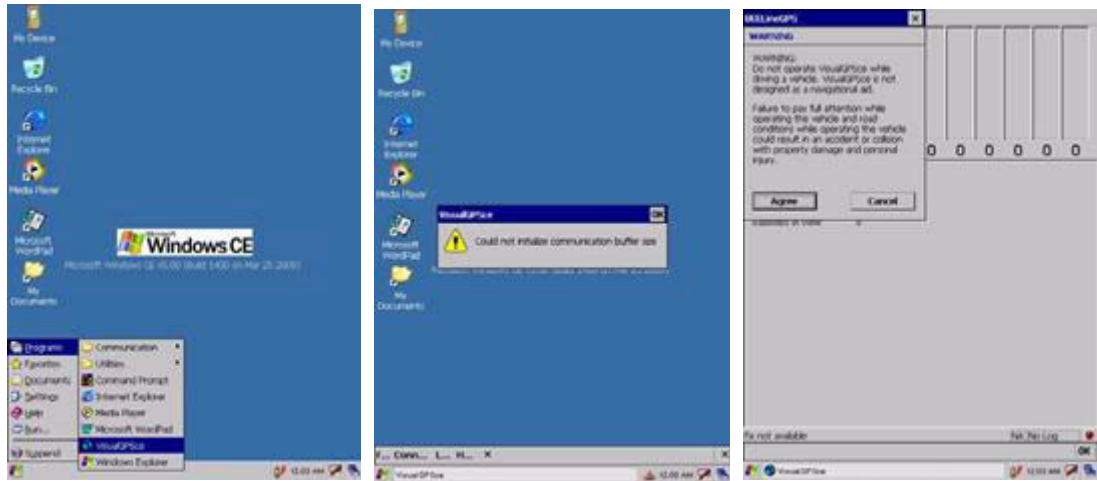


Follow these instructions to set up a GPS connection.

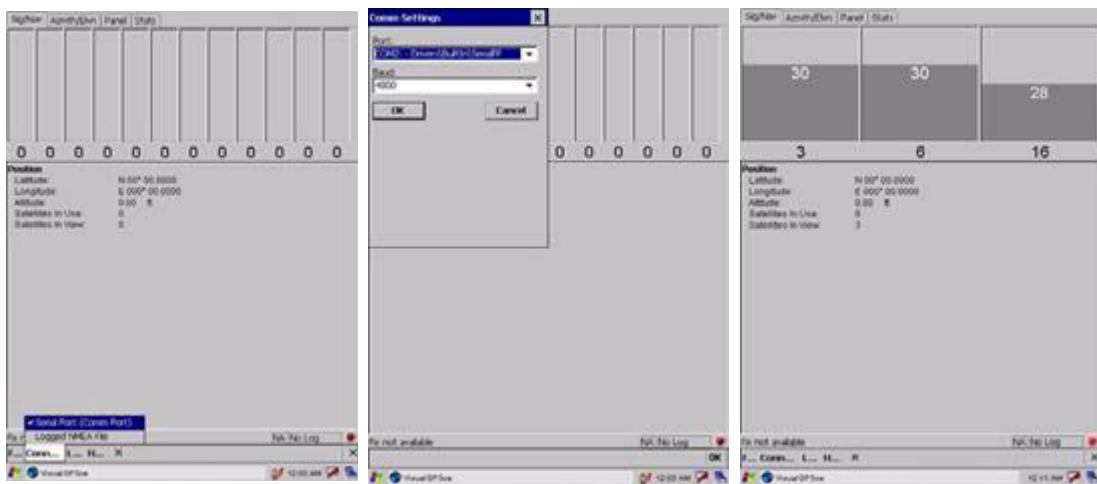
1. From **START -> PROGRAM -> Utility -> “PwrCtrl”**, and choose GPS “ON”.



2. Tap Start -> Program -> VisualGPS.



3. Click **COM2.** and Baudrate **9600.** Then, **OPEN GPS** to start the “GPS”.



4. When GPS is active, click GPS status to display the satellite status.
5. Allow approximately 60 seconds (very first time) for GPS longitude and latitude display. Note: GPS display approximately time depend on the environment.

4.5 COM Port list

Below is reference for COM Port list.

COM No.	Indicate
0	Cradle
1	RS232
2	RS232 / 422(Optional) /485 (Optional)
3	Virtual COM port
4	Virtual COM port
5	GPS (baud:9600)
6	BT (baud:921600)
7	ActiveSync
8	Visual COM port
9	Visual COM port

Chapter 5

Advance Settings

5.1 Checking the Battery Status

This section describes how to view the power level for both the main and backup battery and how to set power saving options. To check the main and backup battery status:

1. Open Power Properties. Tap **Start -> Settings -> Control Panel**. Then double-tap **Power**.
The Power screen appears.



2. The battery menu item displays the status of the main and backup batteries.

Note! *It is necessary to charge the battery when the battery charge reaches below 13%. If the battery does not accept a charge, contact Technical Support.*



5.2 Optimizing Battery Life

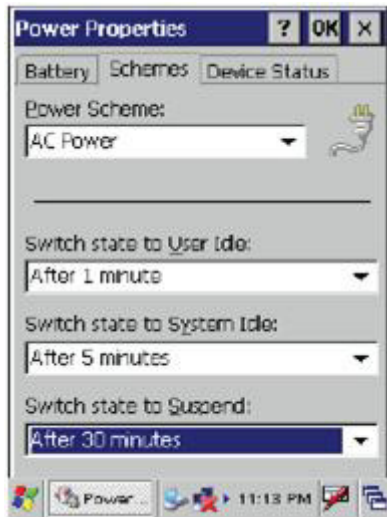
You can extend the PWS-440 battery life by doing either of the following:

- Change the automatic power settings
- Minimize the use of the backlight

5.2.1 Changing the Automatic Power Settings

To change the automatic power settings:

1. In the Power Properties screen tap the Schemes tab.
2. Tap the arrow next to the Power Scheme and select Battery Power.
3. Tap the arrows next to the following three power saving scenarios and select the desired time out for each item.



- **Switch state to User Idle:** PWS-440 enters power saving mode when there is no user input after the selected time-out. The backlight brightness is reduced. The backlight resumes normal brightness when the LCD is Touched.

- **Switch state to System Idle:** PWS-440 enters power saving mode when there is no system activity after the selected time-out. The backlight is turned off. The backlight turns on when the LCD is touched.

- **Switch state to Suspend:** PWS-440 enters suspend mode when there is no user input or system activity after the selected time-out.

Time out values range from Never, and 4/5/10/30 minutes.

5.2.2 Adjusting Backlight Settings

The power consumption of the LCD backlight may be high, turn off the backlight function if it is not necessary. If a backlight is required, set “automatically turn off the backlight” function.

To change backlight settings:

1. Tap **Start -> Settings -> Control Panel**.
2. Tap **OEMs Utility**.
3. Select Display Manager, and tap the arrow next to Dark or drag the slider to the left to reduce the screen brightness.



5.3 Performing a System Reset

You may need to perform a reset if the device freezes (i.e., device no longer responds to the buttons on the screen). A reset allows your device to get a fresh start, similar to rebooting a computer. This will restart your device and adjust memory allocation. All records and entries are retained after a reset. Unsaved data in open programs may in some cases be lost.



Performing a Hardware reset

1. Remove the stylus from its holder.
2. Lightly press the tip of the stylus to the reset button located on the PWS-440.



ADVANTECH

Enabling an Intelligent Planet

www.advantech.com

Please verify specifications before quoting. This guide is intended for reference purposes only.

All product specifications are subject to change without notice.

No part of this publication may be reproduced in any form or by any means, electronic, photocopying, recording or otherwise, without prior written permission of the publisher.

All brand and product names are trademarks or registered trademarks of their respective companies.

© Advantech Co., Ltd. 2013

Federal Communication Commission Interference Statement

15.105 Class B digital device

This equipment has been tested and found to comply with the limits for a Class B digital device, pursuant to Part 15 of the FCC Rules. These limits are designed to provide reasonable protection against harmful interference in a residential installation. This equipment generates, uses and can radiate radio frequency energy and, if not installed and used in accordance with the instructions, may cause harmful interference to radio communications. However, there is no guarantee that interference will not occur in a particular installation. If this equipment does cause harmful interference to radio or television reception, which can be determined by turning the equipment off and on, the user is encouraged to try to correct the interference by one of the following measures:

- Reorient or relocate the receiving antenna.
- Increase the separation between the equipment and receiver.
- Connect the equipment into an outlet on a circuit different from that to which the receiver is connected.
- Consult the dealer or an experienced radio/TV technician for help.

15.21

FCC Caution: Any changes or modifications not expressly approved by the party responsible for compliance could void the user's authority to operate this equipment.

15.19 Labeling

This device complies with Part 15 of the FCC Rules. Operation is subject to the following two conditions: (1) This device may not cause harmful interference, and (2) this device must accept any interference received, including interference that may cause undesired operation.

RF Exposure

for mobile devices without co-location condition (the transmitting antenna is installed or located more than 20cm away from the body of user and near by person)

FCC RF Radiation Exposure Statement:

1. This Transmitter must not be co-located or operating in conjunction with any other antenna or transmitter.
2. This equipment complies with FCC RF radiation exposure limits set forth for an uncontrolled environment. This equipment should be installed and operated with a minimum distance of 20 centimeters between the radiator and your body.