



## aegex10 USER GUIDE



Extreme Mobility Solutions

## REGULATORY STATEMENTS

## FC FCC & IC STATEMENTS

This equipment has been tested and found to comply with the limits for a Class B digital device, pursuant to Part 15 of the FCC Rules. These limits are designed to provide reasonable protection against harmful interference in a residential installation. This equipment generates uses and can radiate radio frequency energy and, if not installed and used in accordance with the instructions, may cause harmful interference to radio communications. However, there is no guarantee that interference will not occur in a particular installation. If this equipment does cause harmful interference to radio or television reception, which can be determined by turning the equipment off and on, the user is encouraged to try to correct the interference by one of the following measures:

- Reorient or relocate the receiving antenna.
- Increase the separation between the equipment and receiver.
- Connect the equipment into an outlet on a circuit different from that to which the receiver is connected.
- Consult the dealer or an experienced radio/TV technician for help.

This device complies with Part 15 of the FCC Rules. Operation is subject to the following two conditions: (1) This device may not cause harmful interference, and (2) this device must accept any interference received, including interference that may cause undesired operation.

## CE CE STATEMENT

1418

Hereby, Aegex Technologies LLC declares that all CE Marked Aegex products incorporating Radio and Telecoms Terminal Equipment functionally are in compliance with the essential requirements and other relevant provisions of Directive 1999/5/EC.

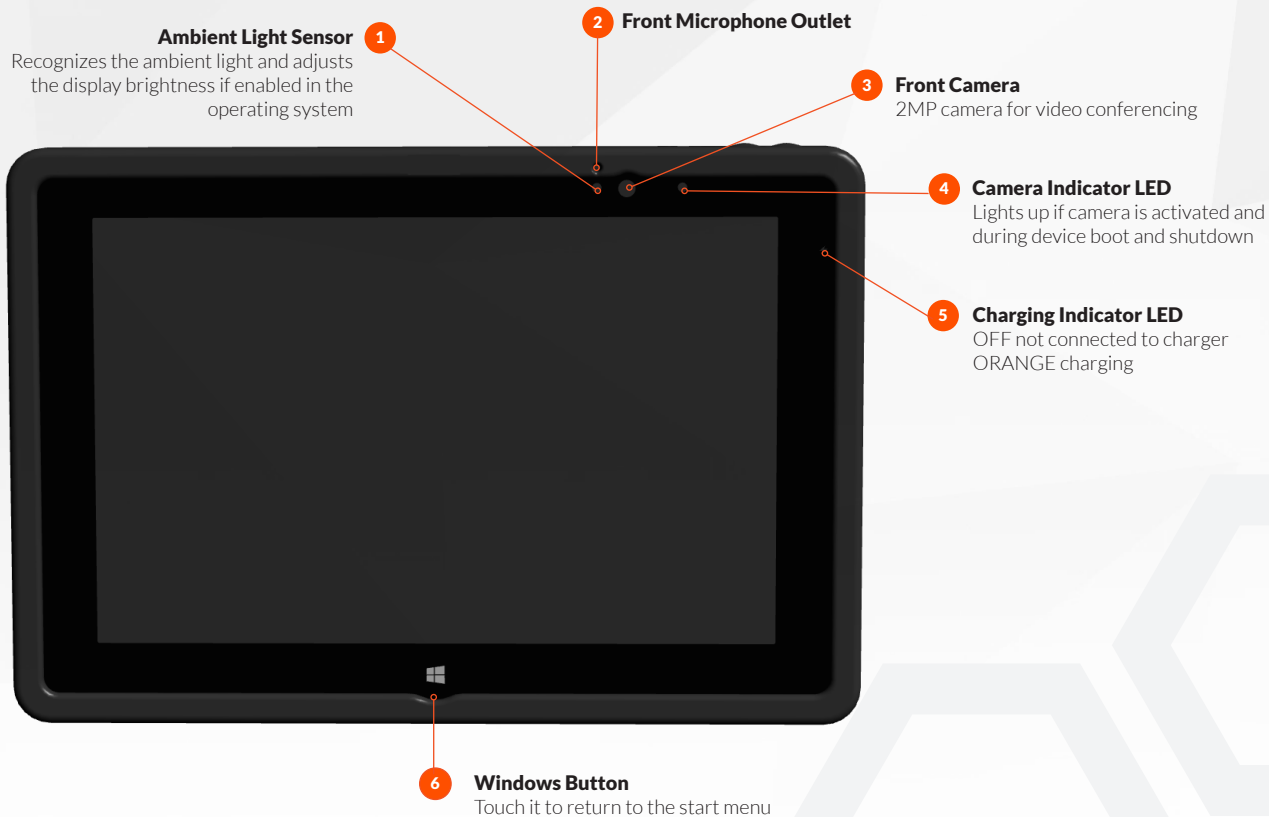
Any changes or modifications not expressly approved by the party responsible for compliance could void the user's authority to operate this equipment.

This device complies with FCC and Industry Canada RF radiation exposure limits set forth for general population (uncontrolled exposure). This device must not be collocated or operating in conjunction with any other antenna or transmitter.

This device complies with Industry Canada licence-exempt RSS standard(s). Operation is subject to the following two conditions: (1) this device may not cause interference, and (2) this device must accept any interference, including interference that may cause undesired operation of the device.

Le présent appareil est conforme aux CNR d'Industrie Canada applicables aux appareils radio exempts de licence. L'exploitation est autorisée aux deux conditions suivantes : (1) l'appareil ne doit pas produire de brouillage, et (2) l'utilisateur de l'appareil doit accepter tout brouillage radioélectrique subi, même si le brouillage est susceptible d'en compromettre le fonctionnement.

## FRONT



## TOP SIDE

**On / Off Button**

7

Push it once to start the tablet; push it again to enable the sleep mode. Push and hold it to shut down the device. You will be instructed on screen to slide to shut down your device.

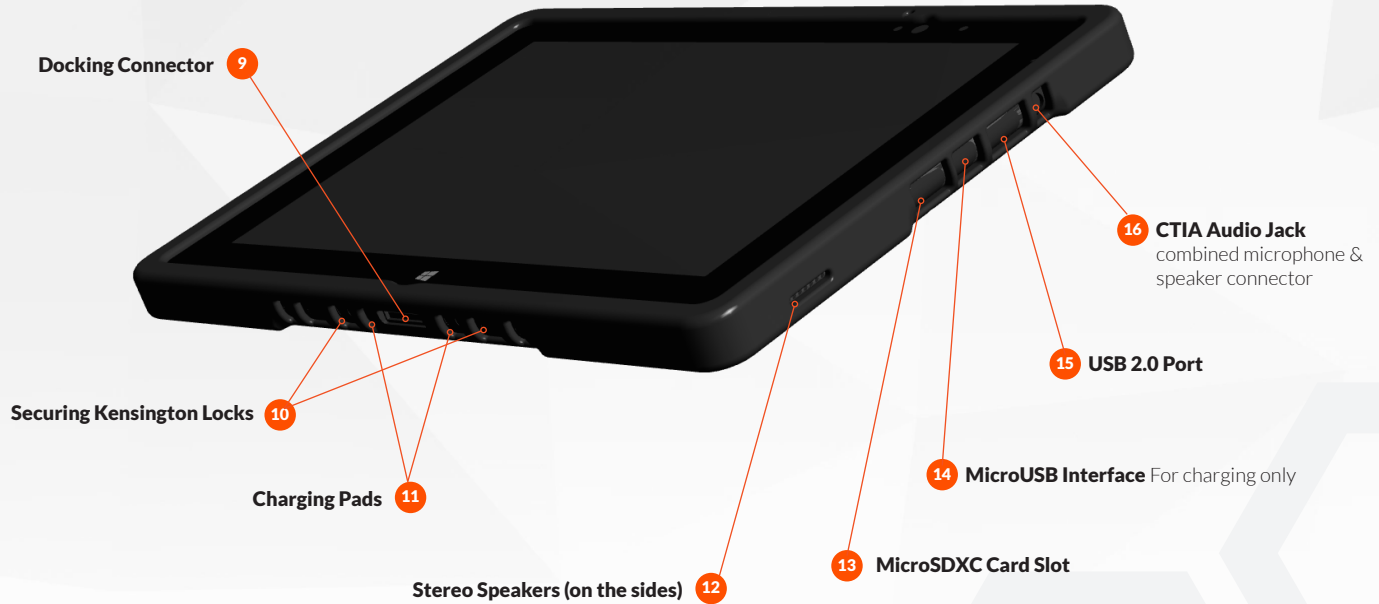


8

**Volume Keys**

Push the left button (-) to reduce the volume, use the right button (+) to increase the volume

RIGHT AND BOTTOM SIDE



REAR VIEW

Camera Flash LED 18

Rear Microphone Outlet 17

19 Rear Camera  
8MP camera for high resolution images & video

16 NFC Antenna Position  
Can be used to read NFC & RFID tags  
with appropriate software



20 Battery Lid

## REPLACING BATTERY / ADDING SIM CARD

## TO REPLACE THE BATTERY:

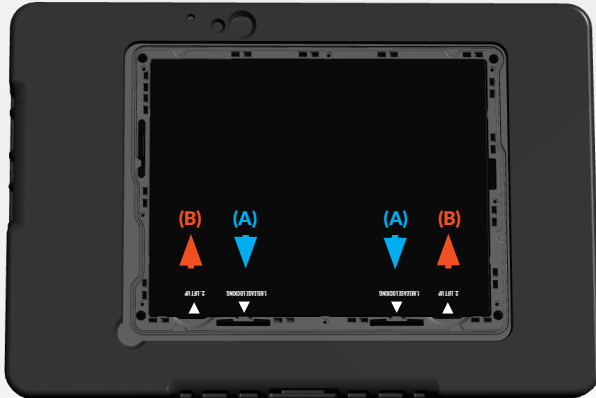


1. Remove the 4 hex screws from the corners of the battery cover using the provided hex tool.

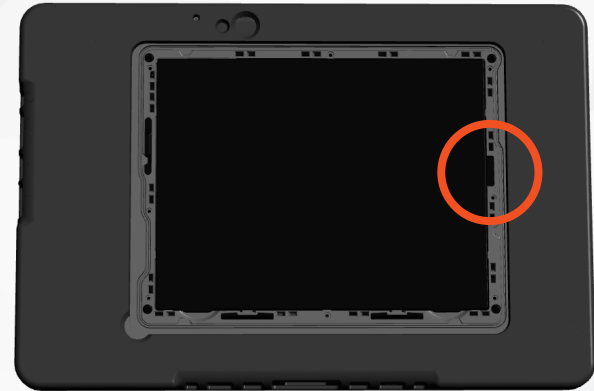


2. Take off the battery cover by pulling on the lid carefully – specifically on the corner with the slant.

## REPLACING BATTERY / ADDING SIM CARD



3. Release locking by pulling on the battery holder hook (A) towards the bottom of the device then pull the battery up (B). Repeat process for other battery holder hook.

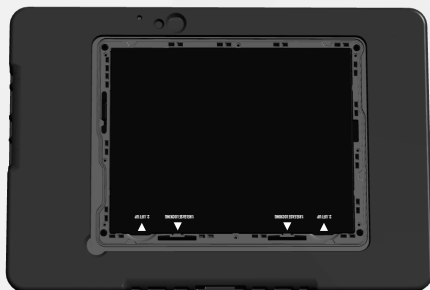


4. Enter the Micro SIM card into the slot in the center of the right side. Make sure you have the Micro SIM card in the correct direction (chip facing down).

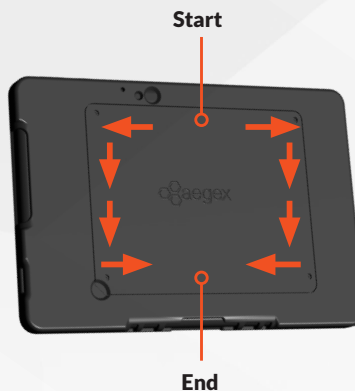


## REPLACING BATTERY / ADDING SIM CARD

When putting the battery back in place:



1. Make sure the battery securely clicks in place on both sides.



2. Replace battery cover by pushing down on the lid carefully by following the steps illustrated in the image below:

**A)** Align the battery door to the back housing

**B)** Engage the battery cover snaps by:

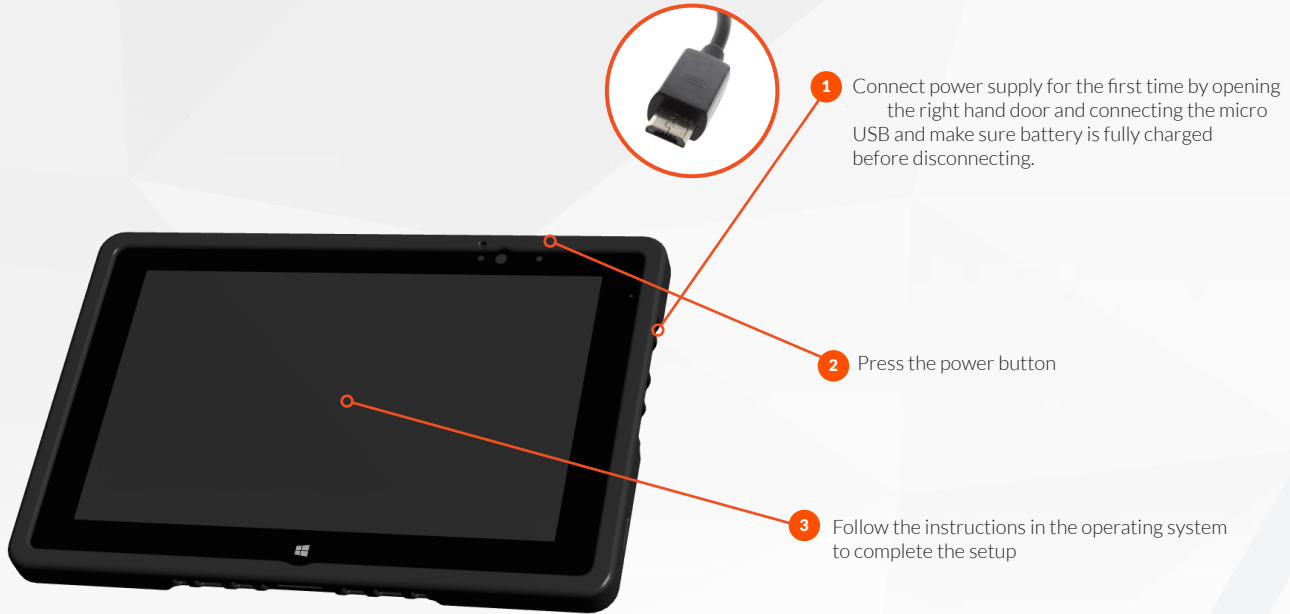
- i. Snapping in the middle top snaps first
- ii. Pressing down the battery cover edge by using two hands
  - a) Moving out symmetrically from the top center to the top left and right corners
  - b) Then from top to bottom on both side edges
  - c) And then from the bottom corners in to the bottom middle symmetrically
  - d) Finish at the bottom middle snaps

**C)** Verify that the battery cover is flush with the rear housing on all edges, and that there is no bulge or gap



3. Then replace the 4 corner hex screws of the battery cover using the provided hex tool. The recommended torque for the screw is 10-12Ncm.

## USING THE TABLET FOR THE FIRST TIME



## IN HAZARDOUS LOCATIONS / TROUBLESHOOTING

**In Hazardous Locations**

Your device is suitable for use in various hazardous environments depending on model number and certification string.

Do not connect or disconnect USB, charger, headset or docking station in a hazardous environment.

Ne pas brancher ou débrancher USB, chargeur, écouteur ou une station d'accueil dans un environnement dangereux

DO NOT REMOVE OR REPLACE THE BATTERY PACK WHILE IN A KNOWN HAZARDOUS LOCATION

AVERTISSEMENT - RISQUE D'EXPLOSION - AFIN D'EVITER TOUT RISQUE D'EXPLOSION, S'ASSURER QUE L'EMPLACEMENT EST DESIGNÉ NON DANEREUX AVANT DE CHANGER LA BATTERIE  
BATTERIES MUST ONLY BE CHARGED IN AN AREA KNOWN TO BE NON-HAZARDOUS

Les PILES DOIVENT seulement être rechargées dans une région pas dangereuse

**Warning Statements**

To prevent possible hearing damage, do not listen at high volume levels for long periods.

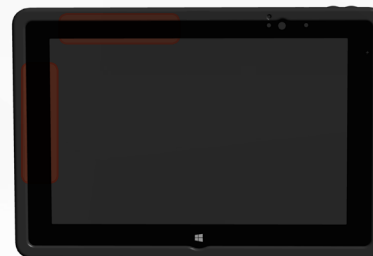
Pour éviter tout dommage possible à l'ouïe, n'écoutez pas aux niveaux de volume élevé pendant de longues périodes

WLAN 802.11 a/n bands are allowed for indoor use only.

**Extreme Mobility Solutions**

**Troubleshooting**

In case device freezes and you need to do a hard reset, **press and hold the power button** for approx. 14 seconds. Device will be turned off now.

**Antenna Positions**

Your device meets guidelines for exposure to radio waves (SAR, Specific Absorption Rate) when kept in a minimum distance of 2.5cm to your body. It is recommended to learn the antenna positions (for 3G or LTE devices only) as mentioned below and not to touch or bring your body closer than 2.5 cm to these antenna areas.

## IMPORTANT PRODUCT AND SAFETY INFORMATION

- Do not drop, bend or twist your tablet. This can break tablet display glass, internal circuit boards or mechanics. If the glass breaks, do not touch the glass parts of the device or attempt to remove the broken glass from the device. Stop using the device until qualified service personnel replace the glass.
- Do not try to disassemble your tablet. This may damage the device.
- Do not connect USB, charger, headset or docking station in a hazardous environment.
- Operate your device in a place where temperature is between -10°C and +50°C.
- Charge your device with the supplied charger in a place where temperature is between 0°C and +40°C.
- Store your device in a place where temperature is between -20°C and +60°C.
- Protect your device from water and moisture intake. Keep connector doors closed when not in use to prevent water and moisture intake.
- Listen to a headset at a moderate level, and do not place the device loudspeaker outlets near your ear when the loudspeakers are in use.
- Use only soft, clean and dry lint-free cloth to clean your device.
- Keep the unit and accessories away from small children.
- Switch off your device before boarding an aircraft.
- Your device meets guidelines for exposure to radio waves (SAR, Specific Absorption Rate) when kept in a minimum distance of 2.5cm to your body.
- **Use only charger delivered with your tablet.**
- **Power rating: 3.8V 3.0A**
- Do not disconnect charger by pulling the cord.
- Do not use damaged power cords or plugs.
- Do not use Nano-to-Micro SIM card adapters.
- **Save energy:** You can save energy by doing following.
  - Close unused applications and data connections.
  - Decrease screen brightness and sound volume.
  - Deactivate unnecessary sounds like touch panel sound.
  - Disconnect your charger from main outlet when charger is not needed.
  - Do not keep unnecessary accessories connected in your device.
- **Recycle.** Return your used electronic units to dedicated collection points. Please note that your tablet has a battery - this cannot be disposed of to normal household waste and battery requires separate recycling.
- **Battery Safety**  
Your rechargeable lithium ion polymer battery operates on 3.8V and 8700mAh capacity (Manufactured by Sunwoda AMME3203).
  - DO NOT REMOVE OR REPLACE THE BATTERY PACK WHILE IN A KNOWN HAZARDOUS LOCATION.  
AVERTISSEMENT - RISQUE D'EXPLOSION - AFIN D'EVITER TOUT RISQUE D'EXPLOSION, S'ASSURER QUE L'EMPLACEMENT EST DESIGNE NON DANEREUX AVANT DE CHANGER LA BATTERIE
  - Batteries have life cycles. If the time that the battery powers equipment becomes much shorter than usual, the battery life might be at the end.
  - Fully charge the battery at least every 6 months.
  - Keep the device away from heat (battery temperature not to exceed 60°C).
  - Do not throw battery into a fire as it may explode.
  - Do not soak the battery with liquid like water, tea, coffee etc.
  - Do not hit, bend, deform or drop the battery.
  - Do not pierce battery with a sharp object such as a needle, etc.
  - The battery should not have liquid from electrolyte flowing, but in case the electrolyte come into contact with eyes, don't rub your eyes. Wash your eyes well with clean water and go to see a doctor immediately. In case the electrolyte come into contact with your skin, wash it well with clean water.
  - Do not externally short-circuit the battery. If externally short-circuited, the battery may be heated, ignited or broken.
  - Only use the correct battery type for this device. There is a risk of damage if you are to place the battery with an incorrect type.
  - Dispose of battery needs to be done according to instructions above.



Extreme Mobility Solutions

[www.aegex.com](http://www.aegex.com)