



## Micro Motor Controller

(In-Wall Z-Wave Appliance Module w/ Energy Monitor)



### Introduction:

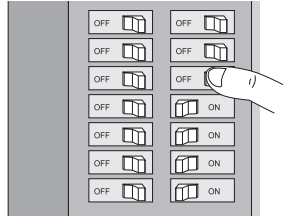
The Aeotec Micro Double Smart Energy Switch is a low-cost Z-Wave appliance module specifically used to enable Z-Wave command and control (on/off) of existing in-wall switches. It can control 2 loads independently. It can also report immediate wattage consumption or kWh energy usage over a period of time.

The wireless module is powered from the mains supply and is a three-wire design which requires a neutral connection. In the event of power failure, non-volatile memory retains all programmed information relating to the units operating status.

**IMPORTANT:**  
A licensed electrician with knowledge and understanding of electrical systems and electrical safety should complete the electrical installation inside the main circuit box (usually located outside of your house).

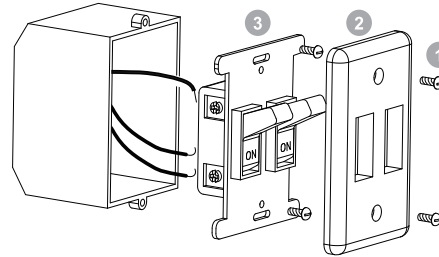
### In-Wall Electrical Installation Instructions:

**Step 1** **IMPORTANT:** The electricity to the circuit must be shut off during installation for safety and to ensure that wires are not short circuited during installation thus causing damage to the Micro Module.



### Step 2 Dismounting In Wall Box.

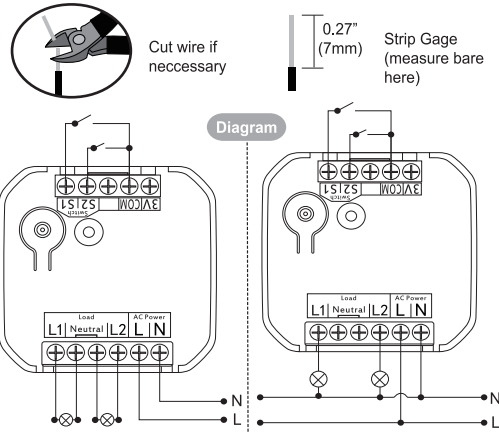
1. Remove the two screws securing the cover plate.
2. Remove the wall switch cover plate.
3. Remove the two screws securing the wall switch to the wall box. Disconnect both wires from the wall switch.



### Step 3 Preparing and Connecting Wires

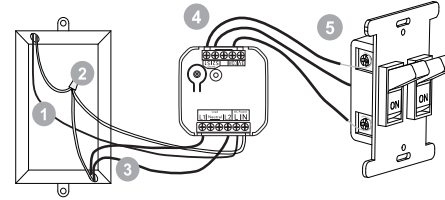
The Aeotec Micro Double Smart Energy Switch must first be powered by a 3-wire system in order to operate. The wiring diagram is as follows:

Note: The "3V Out" terminal should be used only with the Aeon Micro Touch.



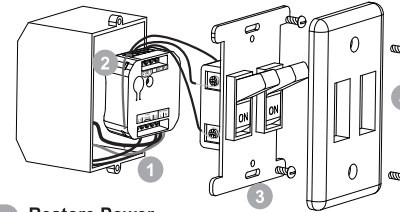
1. Live / hot wire (Black wire). Connect to Live terminal of Micro Double Smart Energy Switch.
2. Neutral (White wire). Note: If this wire is not present in the box, a neutral wire must be pulled into the box.
3. Load wire. Connect to Load terminal of Micro Double Smart Energy Switch.
4. Signal connection: Using three 18 AWG copper wires, connect the terminals of the wall switch to Micro Double Smart Energy Switch as shown.
5. Side wire connection

- Make sure that the ends of the wires from the wall box are straight (cut if necessary).
- Remove insulation from each wire and the wall box as shown.



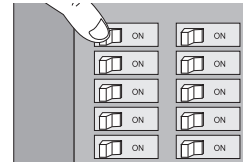
### Step 4 Mounting In Wall Box.

1. Position all wires to provide room for the device. Place Micro Double Smart Energy Switch inside the wall box towards the back of the box.
2. Position the antenna towards the back of the box, away from all other wiring.
3. Reinstall the wall switch to the wall box.
4. Reinstall the cover plate onto the wall box.



### Step 5 Restore Power

Restore power at the circuit breaker or fuse. Installation is complete.

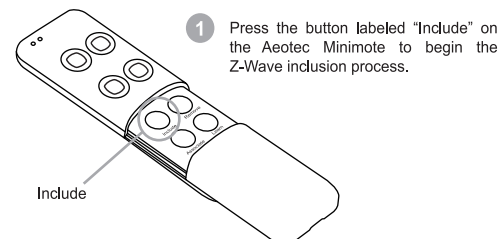


### Z-Wave Network Instructions:

The Aeotec Micro Double Smart Energy Switch must be paired (included) into a Z-Wave network before it can receive Z-Wave commands to turn on/off and report its energy usage. The Micro Double Smart Energy Switch can only communicate to devices within its own Z-Wave network.

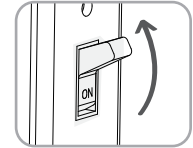
Note: The LED on the Micro Double Smart Energy Switch will blink if it is currently not paired into a Z-Wave network.

### Adding/Including/Pairing the Micro Double Smart Energy Switch into a Z-Wave Network



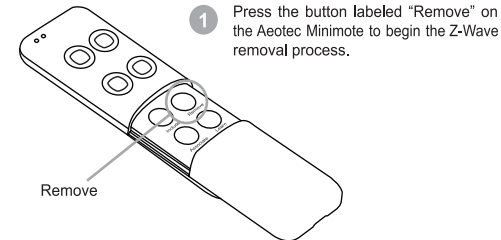
Note: To include the Aeotec Micro Double Smart Energy Switch with other controllers, please consult the operation manual for these controllers on how to include Z-Wave products into an existing network.

- 2 While the Micro Double Smart Energy Switch is powered in a 3-wire system, each external switch/button can be toggled to initiate pairing into the Z-Wave network. Or the internal button can be pushed to initiate pairing into the Z-Wave network if the Micro Double Smart Energy Switch was not put into in-wall box.



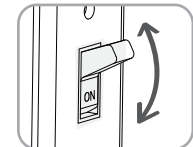
**Troubleshooting:** If the Aeotec Micro Double Smart Energy Switch was not successfully included into any Z-Wave network, the LED will blink continuously slowly. If the Aeotec Micro Double Smart Energy Switch was successfully included to a Z-Wave network, the Status Indication LED will either be solid on or off (depending on if the switch is on or off).

### Removing/Resetting the Micro Double Smart Energy Switch from your Z-Wave Network



Note: To remove the Aeotec Double Micro Smart Energy Switch from other controllers, please consult the operation manual for these controllers on how to remove Z-Wave products from an existing network.

- 2 While the Micro Double Smart Energy Switch is powered in a 3-wire system, each external switch/button can be toggled 10 times in quick succession to initiate removing from the Z-Wave network. Or the internal button can be pushed to initiate removing into the Z-Wave network if Micro Double Smart Energy Switch was not put into in-wall box.



**Troubleshooting:** If the Aeotec Micro Double Smart Energy Switch was removed from the Z-Wave network, the Status Indication LED will be blinking. If the Aeotec Micro Double Smart Energy Switch was not successfully removed from the Z-Wave network, the Status Indication LED will either be solid on or off (depending on if the switch is on or off).

Note: If the Micro Double Smart Energy Switch was not put into an in-wall box, another way to reset Aeotec Micro Double Smart Energy Switch is to press and hold the button which is on Micro Double Smart Energy Switch for 20 seconds.

