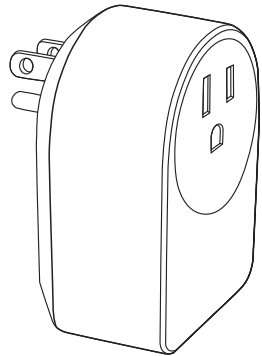




## Smart Dimmer & Dimmer (2nd Edition)

View the expanded manual:  
<http://aeot.ec/spprt/dimmer>



### 1 Aeotec by Aeon Labs Smart Dimmer & Dimmer

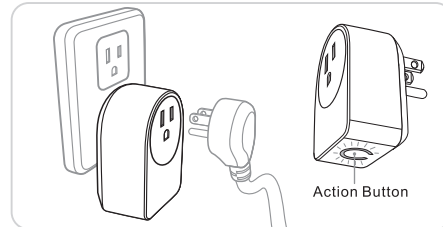
There are appliances that we turn on and off in our homes each day. And, despite the fact that it'd save us money, there are those that we could turn off if only it was easier. Aeotec by Aeon Labs' Smart Dimmer (2nd Edition) and Dimmer (2nd Edition) package convenience, control and money saving considerations into one, small, plug-in tool. A tool that can be programmed, scheduled, controlled and communicated with from anywhere in the world. Smart Dimmer can adjust brightness of your electric-light, it makes a home or office more comfortable and intelligent.



Products that are Z-Wave certified can be used and communicate with other Z-Wave certified devices.

### 2 Familiarise yourself with your Dimmer

There are 2 plug-in Dimmers that this guide helps you with: the Dimmer and the Smart Dimmer. On the outside, they both look the same - and you can distinguish which yours is via the packaging or the label on the back of your Dimmer. While external differences are minor, inside the technologies we've used have one crucial difference: the Smart Dimmer will report the amount of electricity the devices plugged in to it are using, while the Dimmer will not.



#### NOTE

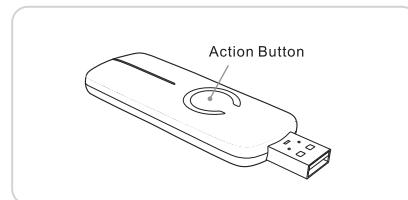
1. This product is only used as a lamp load, you can adjust the brightness of the light, long press "Action Button" light from dark to light or light to dark.
2. Software interface description please refer to the relevant software manual.
3. protection impairment if used in a manner not specified by the manufacturer.

### 3 Quick Start

Getting your Smart Dimmer or Dimmer up and running is as simple as plugging it into a wall outlet and linking it to your existing Z-Wave network. The following instructions tell you how to link your Dimmer to your Z-Wave network using Aeotec by Aeon Labs' Z-Stick or Minimote controllers. If you are using other products as your main Z-Wave controller, please refer to the part of their respective manuals that tells you how to add new devices to your network.

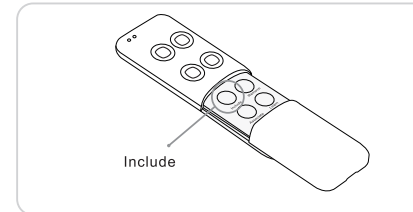
#### • If you're using a Z-Stick:

1. Decide on where you want your Dimmer to be placed and plug it in. Its main LED will begin to blink.
2. If your Z-Stick is plugged into a gateway or a computer, unplug it.
3. Take your Z-Stick to your Dimmer.
4. Press the Action Button on your Z-Stick.
5. Press the Action Button on your Dimmer.
6. If your Dimmer has been successfully linked to your network, its LED will no longer blink. If the linking was unsuccessful the LED will continue to blink.
7. Press the Action Button on the Z-Stick to take it out of installation mode.



#### • If you're using a Minimote:

1. Decide on where you want your Dimmer to be placed and plug it in. Its main LED will begin to blink.
2. Take your Minimote to your Dimmer.
3. Press the Include Button on your Minimote.
4. Press the Action Button on your Dimmer.
5. If your Dimmer has been successfully linked to your network, its LED will no longer blink. If the linking was unsuccessful the LED will continue to blink.
6. Press any button on your Minimote to take it out of installation mode.



Now that your Dimmer is up and running, you'll be able to control it directly and also control it from compatible controllers in your Z-Wave network.

At the Dimmer itself you can turn the power on and off or adjust brightness of your electric-light by pressing the Action Button. For control from other Z-Wave devices, please refer to the relevant part of their respective manuals.

### 4 Advanced Functions

#### • Monitoring your energy usage

If your Dimmer is a Smart Dimmer, it'll report the energy use of whatever is plugged into it back to a compatible Z-Wave gateway or controller. Your Dimmer can report wattage usage or kilowatt-hour (kWh) usage.

If your main controller supports it, the energy consumption will be displayed within its corresponding interface. Please refer to the manual of your main controller for specific information and instructions on monitoring, accessing and interpreting the data collected by your Smart Dimmer.

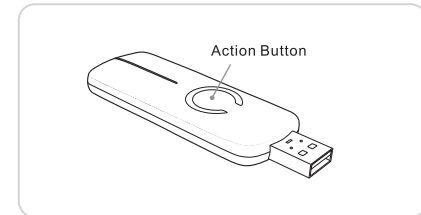
#### • Removing your Dimmer from a Z-Wave network

Your Dimmer can be removed from your Z-Wave network at any time. You'll need to use your Z-Wave network's main controller to do this. The following instructions tell you how to do this using.

Aeotec by Aeon Labs' Z-Stick and Minimote controllers. If you are using other products as your main Z-Wave controller, please refer to the part of their respective manuals that tells you how remove devices from your network.

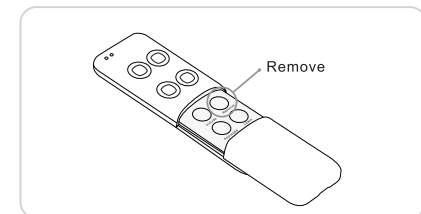
#### • If you're using a Z-Stick:

1. If your Z-Stick is plugged into a gateway or a computer, unplug it.
2. Take your Z-Stick to your Dimmer.
3. Hold the Action Button on your Z-Stick for 3 seconds.
4. Press the Action Button on your Dimmer.
5. If your Dimmer has been successfully removed from your network, its LED will blink. If the removal was unsuccessful its LED will not blink.
6. Press the Action Button on the Z-Stick to take it out of removal mode.



#### • If you're using a Minimote:

1. Take your Minimote to your Dimmer.
2. Press the Remove button on your Minimote.
3. Press the Action Button on your Dimmer.
4. If your Dimmer has been successfully removed from your network, its LED will blink. If the removal was unsuccessful its LED will not blink.
5. Press any button on your Minimote to take it out of removal mode.

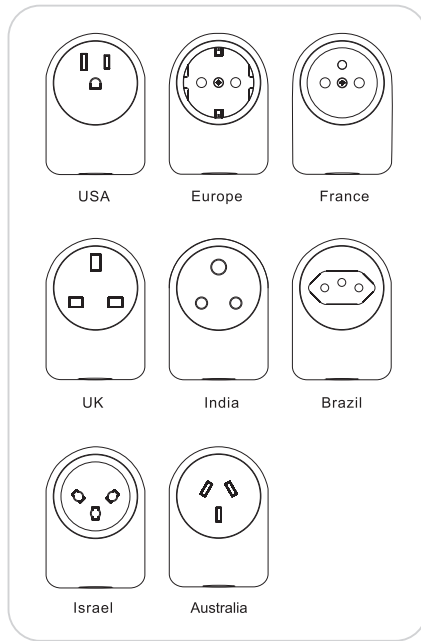


## 5 Technical Specifications

Model number: DSC25-ZWUS/DSC52-ZWUS  
DSC25-ZWXX/DSC52-ZWXX (XX indicate area)  
Operating Temperature: 0 °C to +40 °C.

Version	Input	Working band
US	120V 60Hz, Max: 3A	908.42MHz
EU	230V 50Hz, Max: 3A	868.42MHz
FR	230V 50Hz, Max: 3A	868.42MHz
UK	230V 50Hz, Max: 3A	868.42MHz
IN	230V 50Hz, Max: 3A	865.22MHz
BR	220V 60Hz, Max: 3A	921.42MHz
IL	230V 50Hz, Max: 3A	868.42MHz
AU	230V 50Hz, Max: 3A	921.42MHz

### • Plug Specifications



## 6 Warranty

Aeon Labs warrants to the original purchaser of Products that for the Warranty Period (as defined below), the Products will be free from material defects in materials and workmanship. The foregoing warranty is subject to the proper installation, operation and maintenance of the Products in accordance with installation instructions and the operating manual supplied to Customer. Warranty claims must be made by Customer in writing within thirty (30) days of the manifestation of a problem. Aeon Labs' sole obligation under the foregoing warranty is, at Aeon Labs' option, to repair, replace or correct any such defect that was present at the time of delivery, or to remove the Products and to refund the purchase price to Customer.

The "Warranty Period" begins on the date the Products is delivered and continues for 12 months.

Any repairs under this warranty must be conducted by an authorized Aeon Labs service representative and under Aeon Labs' RMA policy. Any repairs conducted by unauthorized persons shall void this warranty.

Excluded from the warranty are problems due to accidents, acts of God, civil or military authority, civil disturbance, war, strikes, fires, other catastrophes, misuse, misapplication, storage damage, negligence, electrical power problems, or modification to the Products or its components.

Aeon Labs does not authorize any person or party to assume or create for it any other obligation or liability in connection with the Products except as set forth herein.

Aeon Labs will pass on to Customer all manufacturers' Material warranties to the extent that they are transferable, but will not independently warrant any Material.

Customer must prepay shipping and transportation charges for returned Products, and insure the shipment or accept the risk of loss or damage during such shipment and transportation. Aeon Labs will ship the repaired or replacement products to Customer freight prepaid.

Customer shall indemnify, defend, and hold Aeon Labs and Aeon Labs' affiliates, shareholders, directors, officers, employees, contractors, agents and other representatives harmless from all demands, claims, actions, causes of action, proceedings, suits, assessments, losses, damages, liabilities, settlements, judgments, fines, penalties, interest, costs and expenses (including fees and disbursements of counsel) of every kind (i) based upon personal injury or death or injury to property to the extent any of the foregoing is proximately caused either by a defective product (including strict liability in tort) or by the negligent or willful acts or omissions of Customer or its officers, employees, subcontractors or agents, and/or (ii) arising from or relating to any actual or alleged infringement or misappropriation of any patent, trademark, mask work, copyright, trade secret or any actual or alleged violation of any other intellectual property rights arising from or in connection with the products, except to the extent that such infringement exists as a result of Aeon Labs' manufacturing processes.

IN NO EVENT SHALL AEON LABS BE LIABLE FOR ANY INDIRECT, INCIDENTAL, PUNITIVE, SPECIAL OR CONSEQUENTIAL DAMAGES, OR DAMAGES FOR LOSS OF PROFITS, REVENUE, OR USE INCURRED BY CUSTOMER OR ANY THIRD PARTY, WHETHER IN AN ACTION IN CONTRACT, OR TORT, OR OTHERWISE EVEN IF ADVISED OF THE POSSIBILITY OF SUCH DAMAGES. AEON LABS' LIABILITY AND CUSTOMER'S EXCLUSIVE REMEDY FOR ANY CAUSE OF ACTION ARISING IN CONNECTION WITH THIS AGREEMENT OR THE SALE OR USE OF THE PRODUCTS, WHETHER BASED ON NEGLIGENCE, STRICT LIABILITY, BREACH OF WARRANTY, BREACH OF AGREEMENT, OR EQUITABLE PRINCIPLES, IS EXPRESSLY LIMITED TO, AT AEON LABS' OPTION, REPLACEMENT OF, OR REPAYMENT OF THE PURCHASE PRICE FOR THAT PORTION OF PRODUCTS WITH RESPECT TO WHICH DAMAGES ARE CLAIMED. ALL CLAIMS OF ANY KIND ARISING IN CONNECTION WITH THIS AGREEMENT OR THE SALE OR USE OF PRODUCTS SHALL BE DEEMED WAIVED UNLESS MADE IN WRITING WITHIN THIRTY (30) DAYS FROM AEON LABS'S DELIVERY, OR THE DATE FIXED FOR DELIVERY IN THE EVENT OF NONDELIVERY.

THE INDEMNITY AND WARRANTY IN ABOVE ARE EXCLUSIVE AND IN LIEU OF ALL OTHER INDEMNITIES OR WARRANTIES, WHETHER EXPRESS OR IMPLIED, INCLUDING THE IMPLIED WARRANTIES OF MERCHANTABILITY AND FITNESS FOR A PARTICULAR PURPOSE.

### • FCCNOTICE (for USA)

THE MANUFACTURER IS NOT RESPONSIBLE FOR ANY RADIO OR TV INTERFERENCE CAUSED BY UNAUTHORIZED MODIFICATIONS TO THIS EQUIPMENT. SUCH MODIFICATIONS COULD VOID THE USER'S AUTHORITY TO OPERATE THE EQUIPMENT.

This device complies with Part 15 of the FCC Rules. Operation is subject to the following two conditions:

1. This device may not cause harmful interference, and
2. This device must accept any interference received, including interference that may cause undesired operation. This equipment has been tested and found to comply with the limits for a Class B digital device, pursuant to part 15 of the FCC Rules. These limits are designed to provide reasonable protection against harmful interference in a residential installation. This equipment generates, uses and can radiate radio frequency energy and, if not installed and used in accordance with the instructions, may cause harmful interference to radio communications. However, there is no guarantee that interference will not occur in a particular installation. If this equipment does cause harmful interference to radio or television reception, which can be determined by turning the equipment off and on, the user is encouraged to try to correct the interference by one or more of the following measures:

- Reorient or relocate the receiving antenna.
- Increase the separation between the equipment and receiver.
- Connect the equipment into an outlet on a circuit different from that to which the receiver is connected.
- Consult the dealer or an experienced radio/TV technician for help.

### • Warning

Do not dispose of electrical appliances as unsorted municipal waste, use separate collection facilities.

Contact your local government for information regarding the collection systems available.

### • Certifications (regional)



Version : 501002500001-X01 [www.aeotec.com](http://www.aeotec.com)



Address: 2nd Floor, LongMa Industrial Park Tangtou, Shiyuan Town, Bao'an District, Shenzhen City, 518108 Guangdong Province China