

# NEXT: Planting Your Garden

Record the planting date on a calendar or in a notebook.

## Touch 'Quick Plant' to Start a New Garden

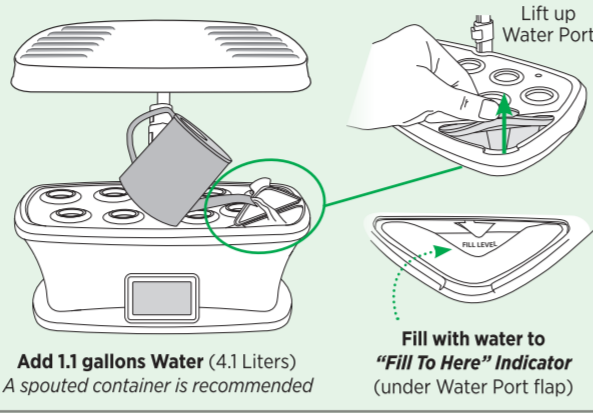
Before planting, touch **Quick Plant** option on the control panel for step-by-step planting instructions.

Quick Plant is the fastest and easiest path to starting a new garden. Settings for grow lights, pump, and Plant Food cycles are pre-set in the Quick Plant option to provide optimal growth based on the plant type you select.



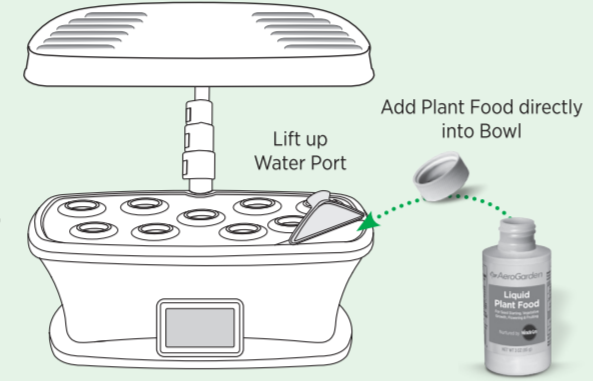
### 1. Add Water

- Add water to "Fill To Here" indicator located under the Water Port flap.
- Use room temperature tap water or bottled distilled water. Do not use well water which may interfere with our Plant Food, or softened water, as it contains levels of sodium usually harmful to plants.
- The 'Add Water' reminder alert will appear on the control panel when the water level is low. For best results, keep the water level topped up to the fill line at all times.



### 2. Add Plant Food

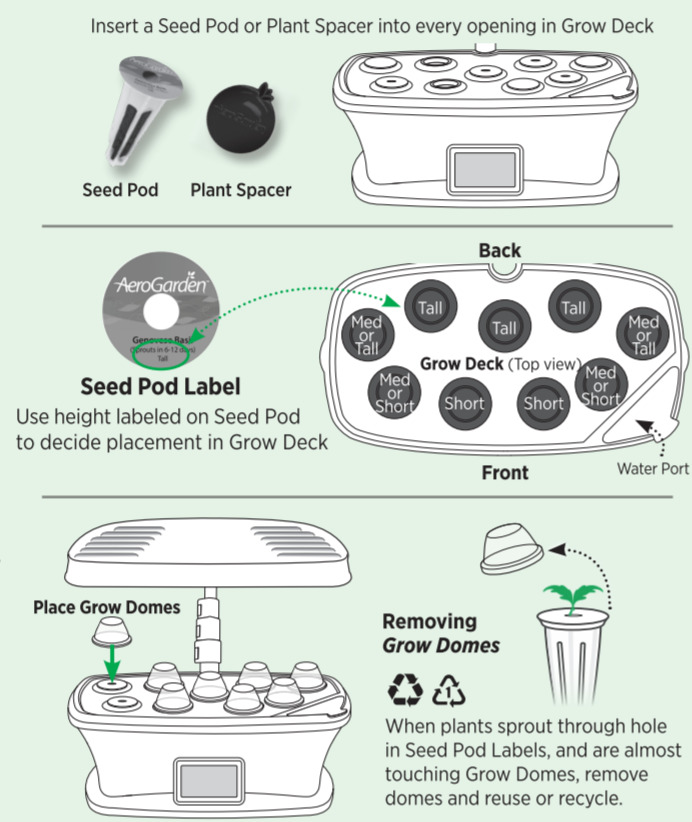
- Plant Food instructions are printed on the packaging, as well as in the Seed Pod Kit Instructions booklet. Read and follow the instructions carefully!
- Use only the recommended amount of Liquid Plant Food.
- Add Plant Food directly into Bowl when first planting your Seed Pod Kit, and when the 'Add Plant Food' reminder activates (every 2 weeks).
- Do not overfeed! More isn't better. Too much Plant Food may be harmful to your plants.



Read and follow Seed Pod Kit Instructions booklet carefully!

### 3. Add Seed Pods & Grow Domes

- Insert Seed Pods into openings in Grow Deck.
- Seed Pod Labels often identify plant height to assist with placement. Look for height noted on Labels.
- Plants grow best and look best if medium or tall plants are in back openings, and short plants are in front openings (see diagram).
- Seed Pod Kits for Tomatoes and Peppers often include both Seed Pods and Plant Spacers. Plant Spacers allow your Tomato/Pepper plants ample room to grow.
- Do not remove Labels from Seed Pods. The labels identify the plant type and plant height, show the germination time, and inhibit algae growth.
- Place a Grow Dome over each Seed Pod.
- Grow Domes rest on Seed Pods and may not 'snap' into place. Also, it is not necessary for Grow Domes to cover any Plant Spacers in your AeroGarden.
- Leave Grow Domes on the Seed Pods until plants have sprouted and their leaves nearly touch the domes.
- Once removed, Grow Domes may be reused/recycled.



**Congratulations!** You're on your way to a beautiful garden.

# Control Panel Settings

## HOME OPTIONS



The AeroGarden **BOUNTY** touch screen control panel makes it easy for anyone to grow indoors. Beginners get step by step instructions of the planting process and tips to improve gardening skills. And it allows Advanced Users to customize every aspect of their AeroGarden, expanding the possibilities of what can be grown indoors.

Simply touch the control panel screen on the selection that you want to access. The panel view will change to display current settings, as well as instructions to reset or change settings if needed.

From any other screen, press the 'HOME' button to return to the default Home screen.

- WI-FI ENABLED:** Connect your AeroGarden to the Internet and manage your AeroGarden using our App. For set up instructions, download the AeroGarden App on your preferred mobile device.
- LIGHT:** The Light icon shows the current time as well as when your light is scheduled to turn on and off each day.
- ON/OFF:** Temporarily turns lights on or off. Your lights will automatically go back to their programmed settings at the start of the next on/off cycle.
- WATER:** The Water icon reminds you when it is time to add water, and when pressed also displays the current pump setting and test pump feature.
- PLANT FOOD:** The Plant Food icon shows how many days are left until it is time to add Plant Food, and reminds you when it is time to add more.
- QUICK PLANT:** Press the Quick Plant button to start a new garden, and follow the simple step by step instructions to set up all garden functions.
- MORE OPTIONS:** More Options button to access a wide variety of garden functions, as detailed below.

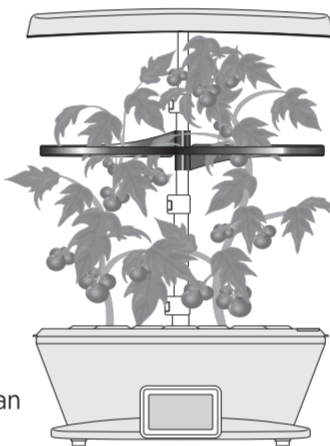
## MORE OPTIONS

- ▶ **Clock** - Use this to set your clock to the current time (initially set during Quick Plant).
- ▶ **Light** - Use this if you want to change the times your LED Grow Light will go on and off, or to customize the number of hours your grow lights turn on per day.
- ▶ **Plant Food** - Allows you to customize or reset your Plant Food reminders. The Plant Food alert is preset to activate every 14 days to remind you to add Plant Food, but can be changed if your plants have other Plant Food requirements. This would not be necessary in normal use.
- ▶ **Pump** - Allows you to customize or reset your Pump settings and also to test the pump..
- ▶ **Quick Plant** - With just a few touches, Quick Plant helps you select the settings you need for the type of plants you are growing. Use this for the fastest and easiest path to planting a new garden.
- ▶ **Set Audio Alert** - Audio Alerts can audibly remind you when it is time to add water and Plant Food. You can also turn Audio Alerts on or off, and set start/stop times here.
- ▶ **Garden Status** - All your current settings (Lights, Pump, etc.) can be viewed in Garden Status.
- ▶ **Help & Tips** - Use this for easy access to helpful gardening tips and customer support information.
- ▶ **Reset Defaults** - Returns settings for key garden functions to original factory defaults.
- ▶ **Order Supplies** - Easy access to replacement part numbers and customer support contact information.

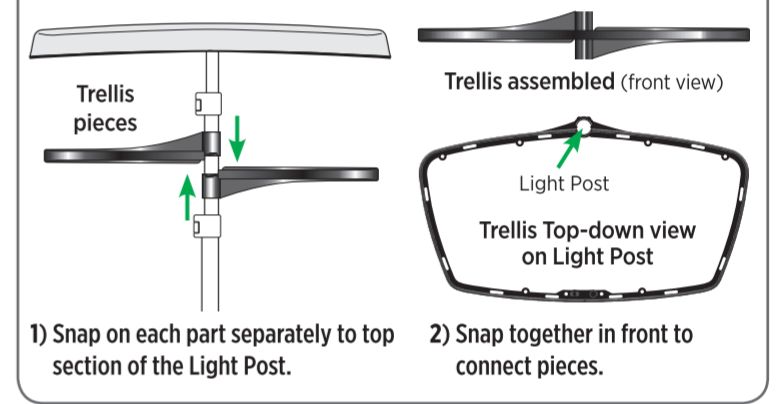
## Using The Trellis System

The included **Trellis System** will support your large plants, such as Tomatoes and Peppers, by wrapping around the plants as they grow.

Once your plants reach a height where they would benefit from extra support, attach the **Trellis System** to the top Light Post section as pictured. The **Trellis** can be repositioned as plants grow.



## How to assemble Trellis System



# Gardening Tips for Maximum Harvests

## PLANTING

- ▶ Many Seed Pods are labeled for height. Gardens grow and look their best when tall plants are planted in back, medium plants along the sides, and short plants in front. If plants are all the same size, like Salad Greens, they can be planted anywhere.
- ▶ Do not remove Labels from Seed Pods. The labels identify the plant type and plant height, show the germination time, and inhibit algae growth.
- ▶ Grow Domes help regulate moisture and temperature for optimal germination. Leave them on until plants are nearly touching the domes.
- ▶ Seed Pod Kits for large plants like Tomatoes and Peppers often receive fewer than 9 pods to compensate for the large plant size. Place Seed Pods in each back/side opening and in the center front opening. Put Plant Spacers in the remaining openings.

## GERMINATION

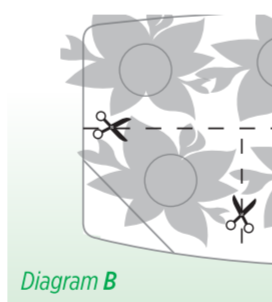
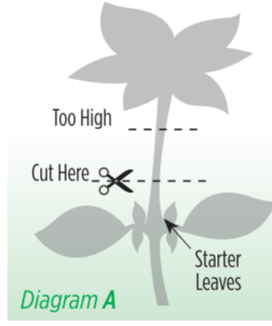
- ▶ Some seeds germinate in less than 24 hours. Some take 24 days or more. Most labels give an estimate of how long your seeds will take to germinate but many factors impact germination.
- ▶ As a rule of thumb, if you are comfortable, so are your plants. However, plants are impacted by temperature. Cold weather plants like Salad Greens germinate better in cooler weather. Heat lovers like Tomatoes and Peppers will germinate faster in warmer temperatures (above 70 degrees F). But don't sweat it! While they may take a bit more time, your seeds will germinate.
- ▶ If you are growing your own seeds, plant 5-6 seeds per pod and check the seed packet for information regarding temperature and days to germination.

## PRUNING

- ▶ Lower your plants, don't raise your lights! You will achieve more

compact, beautiful growth and bigger harvests if you prune plants to keep the lights closer to all plants.

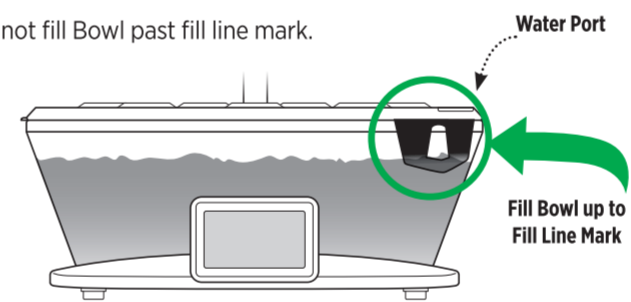
- ▶ Fast growing plants (like Basil) make gardeners want to raise the lights too soon. Resist! Pruning the plant just above a new leaf set (Diagram A) and leaving the lights down low will ensure that slow-growing and low-growing plants in your garden get all the light they need to flourish.
- ▶ Not pruning is the number one mistake made by new AeroGardeners! Prune early and often and enjoy the small harvests!
- ▶ Prune often to maintain a healthy garden, but never take more than 1/3 of each individual plant at a time.
- ▶ Plants compete for light. Left unattended, more aggressive growers can actually block enough light to suppress growth of their slower growing neighbors, and eventually they can die off due to lack of light. Spreading leaves must be trimmed (Diagram B) to make sure that slow growers get enough light to thrive and produce big yields.
- ▶ Finally, pruning = harvesting. Each time you prune you get to enjoy fresh herbs in a salad, soup or pizza or a sandwich. And, a full, bushy garden looks much better than one giant, spindly plant surrounded by straggly, light starved neighbors. Pruning also releases a wonderful scent. So prune!



## WATER

- ▶ While the AeroGarden control panel will remind you when water gets low, best results are achieved by topping off water regularly.
- ▶ Plants grown in the AeroGarden are designed to thrive with most municipal tap water. Improved results can be seen with distilled water or reverse osmosis water, but this is not needed in most cases.

- ▶ Do not use well water, as most well water contains a high amount of dissolved solids that upset the balance of our Plant Food. This can result in plants suddenly browning, or just not growing well.
- ▶ Do not use softened water as it contains too much sodium and will usually harm your plants.
- ▶ Do not fill Bowl past fill line mark.

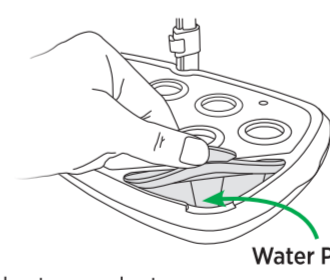


## LIGHTS

- ▶ Plants love light! Always keep your Grow Lights as close to your plants as possible. Plants should be 4-6 inches below Grow Lights.
- ▶ Always check to see if you can prune plants instead of raising Grow Lights. After pruning, lower your lights back down to within 4-6 inches of plants if possible.
- ▶ You do not need to replace your LED lights unless individual diodes start to fail. Diodes have a 3-5 year life span.

## PLANT FOOD

- ▶ Typically, your plants will need Plant Food every 2 weeks.
- ▶ Follow instructions for feeding amounts printed on the Plant Food packaging.
- ▶ Add Plant Food directly into the Bowl through the Water Port.
- ▶ Plant Food requirements may change as plants grow. See Plant Food packaging for details.
- ▶ More isn't better. Resist the temptation to add "just a little extra." Too much Plant Food can hurt your plants.



## POLLINATING

Because most people don't have bees in their home, you will need to start pollinating your fruiting plants (tomatoes, peppers, strawberries, etc) once they begin to flower (approximately 4 - 6 weeks after planting). To pollinate, use one or more of the following methods:

- ▶ Place an open hand inside plant branches and gently move your hand back and forth to shake the plant and spread the pollen.
- ▶ Place a fan near your plants and the moving air will pollinate your plants.
- ▶ Use our "Be the Bee Pollinator" to spread the pollen.
- ▶ Strawberries can benefit from more aggressive pollination. Using an electric toothbrush, touch each flower with the brush, moving from flower to flower.

## HARVESTING

- ▶ Many first-time growers are hesitant to harvest. Don't be! Most gardens will produce more, for a longer period, with frequent harvests. You almost can't begin to harvest (prune) early enough.
- ▶ AeroGardens work best with a harvesting method called "cut and come again." Simply put, you enjoy frequent small harvests and then watch as the plants rapidly regrow - ready for harvest again and again.
- ▶ Enjoy frequent, smaller harvests for the first month or two until plants mature and larger harvests are available.
- ▶ Harvest often to maintain a healthy garden, but never take more than 1/3 of each individual plant at a time.
- ▶ For Salad Greens, cut the top 2 inches off the entire garden, or harvest large leaves individually by cutting off at the base of the plant.

**U.S. CAUTION** - You are cautioned that any changes or modifications not expressly approved in this manual could void your authority to operate this equipment.

**User Maintenance:** Any servicing is to be performed by an authorized service representative. Use original packaging for storage when the appliance is not used.

Disconnect power before servicing or replacing lights. Use only AeroGarden LED Light Hood replacement.

## DO NOT SUBMERGE HOUSEHOLD USE ONLY

Do not immerse cord in water or other liquid, and unplug cord from outlet when not in use.

To reduce the risk of electric shock, this furnishing has a polarized plug (one blade is wider than the other). This plug will fit in a polarized outlet only one way. If the plug does not fit fully in the outlet, reverse the plug. If it still does not fit, contact a qualified electrician to install the proper outlet. Do not change the plug in any way.

**CAUTION!** TO PREVENT ELECTRIC SHOCK, MATCH WIDE BLADE OF PLUG TO WIDE SLOT, FULLY INSERT.  
POUR ÉVITER UN CHOC ÉLECTRIQUE, PRÉSENTER LA LAME LARGE À LA FENTE LARGE ET POUSSER JUSQU'AU FOND.

## AeroGarden LIMITED WARRANTY

- WHAT IS COVERED** - This warranty covers any defects in materials or workmanship, with the exceptions stated below.
- HOW LONG COVERAGE LASTS** - This warranty runs for one (1) year on this AeroGarden and LED Grow Lights, from the date of original purchase, for the original purchaser/user.
- WHAT IS NOT COVERED** - The warranty shall not apply to problems arising from: normal wear; failure to adhere to enclosed operating instructions; serial numbered products if the serial number has been removed or defaced; products subject to negligence, accident, improper use, maintenance or storage; products damaged by circumstances beyond AeroGarden International Inc.'s control; loss or damage to removable parts; or products modified (including, but not limited to, modifications through the use of unauthorized parts or attachments) or repaired by anyone other than AeroGarden International, Inc., or its designee. This warranty excludes all incidental or consequential damages.
- WHAT AEROGROW WILL DO** - AeroGarden International, Inc., at its option, will repair any defects in materials or workmanship or will replace these products with ones of similar features and price. AeroGarden International, Inc.'s sole obligation and your exclusive remedy under this warranty shall be limited to such repair or replacement.
- TO RETURN THIS PRODUCT** - If you have questions or concerns regarding your AeroGarden, please contact Customer Service at 1-800-476-9669. Please do not return any product without contacting AeroGarden for return authorization. Unauthorized returns, as well as C.O.D. shipments, will be refused. For more information regarding returns, please see the Returns section at [www.AeroGarden.com](http://www.AeroGarden.com)

Due to continuing improvements, actual product may differ slightly from the product described herein. Some states do not allow the exclusion or limitation of incidental or consequential damages, so the above limitation or exclusion may not apply to you. This warranty gives you specific legal rights, and you may have other legal rights that vary from state to state.

If you have any questions please feel free to contact our customer service representatives at 1-800-476-9669 (USA) or 1-800-611-9058 (Canada)  
NEED SUPPLIES, ACCESSORIES OR INFORMATION? Visit Our Website: [www.AeroGarden.com](http://www.AeroGarden.com)



**facebook** We also have an active Facebook Community that loves to answer questions at [facebook.com/aerogarden](https://www.facebook.com/aerogarden). "Like" us for special offers and community fun!

AeroGarden International, Inc., P.O. Box 18450, Boulder, CO 80308-1450  
©2018 AeroGarden International, Inc. 051518 AA