

AeroScout™ Tag

Model No.: BWH2000

User's Guide

Version 2.0

Copyright © 2003 BlueSoft Inc. All rights reserved.

AeroScout™ is a trademark of BlueSoft Inc. Other brand products and service names are trademarks or registered trademarks of their respective holders.

The information and know-how included in this document are the exclusive property of BlueSoft Inc. and are intended for the use of the addressee or the user alone. The addressees shall not forward to another their right of using the information, know-how or document forwarded herewith, in whole or in part in all matters relating or stemming from or involved therein, whether for consideration or without consideration, and shall not permit any third party to utilize the information, know-how or the documents forwarded herewith or copies or duplicates thereof, unless at the company's consent in advance and in writing. Any distribution, advertisement, copying or duplication in any form whatsoever is absolutely prohibited. The Company reserves the right to sue the addressee, user and/or any one on their behalves, as well as third parties, in respect to breaching its rights pertaining to the intellectual rights in particular and its rights of whatever kind or type in the information, know-how or the documents forwarded by them herewith in general, whether by act or by omission.

This document is confidential and proprietary to Bluesoft Inc. and is not to be distributed to any persons other than Bluesoft customers or other persons appointed in writing by Bluesoft Inc.

Bluesoft, Inc.
1450 Fashion Island Blvd., Suite 510
San Mateo, CA 94404
USA
(650) 571 0800
www.bluesoft-inc.com

Support

For support, contact Bluesoft at email support@bluesoft-inc.com or call +972 8 936 3136 x116.

Contents

This document contains the following information:

Section	Contains
Warranty	Terms of limited hardware warranty
Safety and Warnings	Safety and usage warnings
Introduction	Introduction to the AeroScout Tag
AeroScout™ Tag Configuration	Information about performing Tag configuration.
Replacing the Internal Battery	Information and procedures for replacement of the Tag battery
Radio Specifications	Radio Specifications
Environmental Specifications	Environmental Specifications

Warranty

Hardware. Bluesoft, Inc., ("Bluesoft") warrants that commencing from the date of delivery to Customer (but in case of resale by a Bluesoft reseller, commencing not more than ninety (90) days after original shipment by Bluesoft), and continuing for a period of one (1) year the Hardware will be free from defects in material and workmanship under normal use. The date of shipment of a Product by Bluesoft is set forth on the packaging material in which the Product is shipped. This limited warranty extends only to the original user of the Product. Customer's sole and exclusive remedy and the entire liability of Bluesoft and its suppliers under this limited warranty will be, at Bluesoft's or its service center's option, shipment of a replacement within the period or a refund of the purchase price if the Hardware is returned to the party supplying it to Customer, if different than Bluesoft, freight and insurance prepaid. Bluesoft replacement parts used in Hardware repair may be new or equivalent to new. Bluesoft's obligations hereunder are conditioned upon the returned of affected articles in accordance with Bluesoft's then-current Return Material Authorization (RMA) procedures.

Restrictions. This warranty does not apply if the Product (a) has been altered, except by Bluesoft, (b) has not been installed, operated, repaired, or maintained in accordance with instructions supplied by Bluesoft, (c) has been subjected to abnormal physical or electrical stress, misuse, negligence, or accident; or (d) is sold for beta, evaluation, testing, or demonstration purposes for which Bluesoft does not receive a payment of purchase price or license fee.

DISCLAIMER OF WARRANTY. EXCEPT AS SPECIFIED IN THIS WARRANTY, ALL EXPRESS OR IMPLIED CONDITIONS, REPRESENTATIONS, AND WARRANTIES INCLUDING, WITHOUT LIMITATION, ANY IMPLIED WARRANTY OR CONDITION OF MERCHANTABILITY, FITNESS FOR A PARTICULAR PURPOSE, NONINFRINGEMENT, SATISFACTORY QUALITY OR ARISING FROM A COURSE OF DEALING, LAW, USAGE, OR TRADE PRACTICE, ARE HEREBY EXCLUDED TO THE EXTENT ALLOWED BY APPLICABLE LAW. TO THE EXTENT AN IMPLIED WARRANTY CANNOT BE EXCLUDED, SUCH WARRANTY IS LIMITED IN DURATION TO THE WARRANTY PERIOD. BECAUSE SOME STATES OR JURISDICTIONS DO NOT ALLOW LIMITATIONS ON HOW LONG AN IMPLIED WARRANTY LASTS, THE ABOVE LIMITATION MAY NOT APPLY TO YOU. THIS WARRANTY GIVES YOU SPECIFIC LEGAL RIGHTS, AND YOU MAY ALSO HAVE OTHER RIGHTS, WHICH VARY FROM JURISDICTION TO JURISDICTION. This disclaimer and exclusion shall apply even if the express warranty set forth above fails of its essential purpose.

Safety and Warnings

FCC STATEMENT

This equipment has been tested and found to comply with the limits for a Class B digital device, pursuant to Part 15 of the FCC rules. These limits are designed to provide reasonable protection against harmful interference in a residential installation. This equipment generates, uses and can radiate radio frequency energy and, if not installed and used in accordance with the instructions, may cause harmful interference to radio communications. However, there is no guarantee that interference will not occur in a particular installation. If this equipment does cause harmful interference to radio or television reception, which can be determined by turning the equipment off and on, the user is encouraged to try to correct the interference by one or more of the following measures:

- a) Reorient or relocate the receiving antenna.
- b) Increase the separation between the equipment and receiver.
- c) Connect the equipment to an outlet on a circuit different from that to which the receiver is connected.
- d) Consult the dealer or an experienced radio/TV technician.

This device complies with Part 15 of the FCC Rules.
Operation is subject to the following two conditions:

- (1) This device may not cause harmful interference and
- (2) This device must accept any interference received, including interference that may cause undesired operation.

FCC Warning

Modifications not expressly approved by the manufacturer could void the user authority to operate the equipment under FCC Rules.

Instructions concerning human exposure to radio frequency electromagnetic fields.

To comply with FCC Section 1.307 (b)(1) for human exposure to radio frequency electromagnetic fields, implement the following instruction:

A distance of at least 20 cm between the equipment and all persons should maintain during operation of the equipment.



Introduction

The AeroScout™ Tag is a key component of the AeroScout™ WLAN Location System. These dedicated battery-powered Tags send Wi-Fi compatible messages at pre-defined intervals and can be attached to non-Wi-Fi assets in order to locate them (such as inventory/pallets, trailers, containers and much more). Tags send messages with their unique ID number that are detected by Location Receivers and used to estimate the Tag's location.

AeroScout™ Tag Configuration

The following procedure describes how to establish the communication link between the AeroScout Manager workstation and an AeroScout Tag, specify a new configuration of the Tag, and download the new configuration. A Tag can be re-configured manually or by loading a Tag configuration file stored in your workstation or on the network.

The Tag housing must be opened in order to configure a Tag.

► To configure a Tag

1. Select **Configuration → Tag → Tag Configuration** to open the Tag configuration application. The window shown in Figure 1: Tag Configuration Dialog Box appears. We need to update the picture

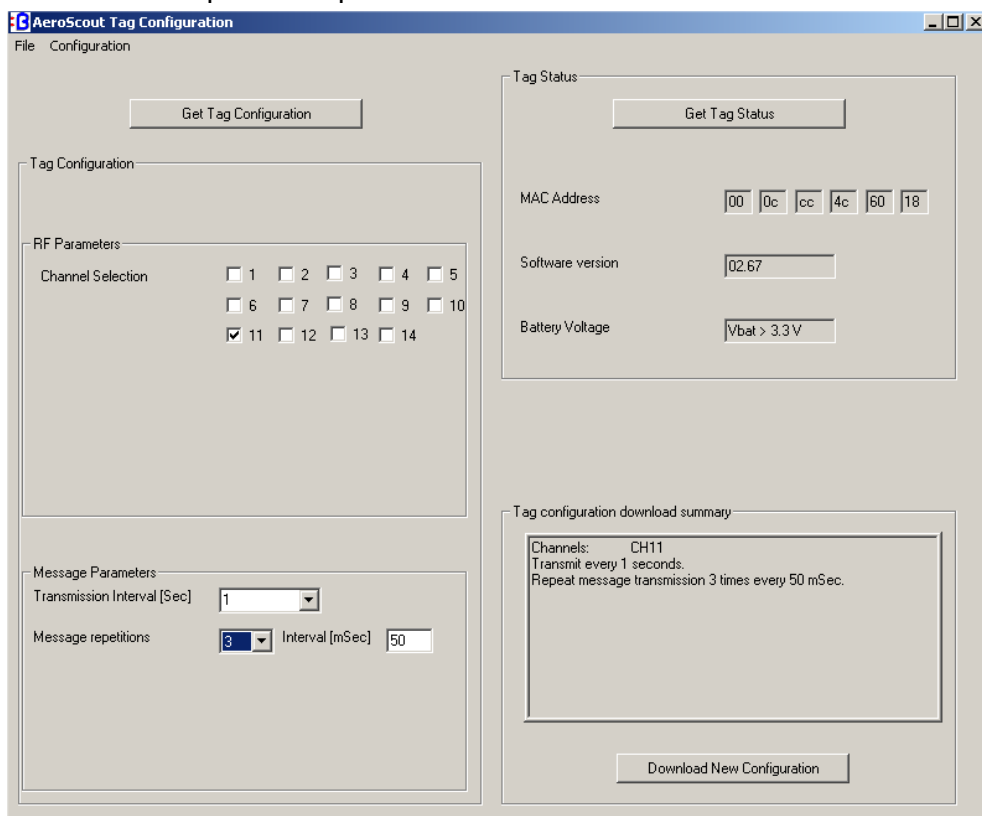


Figure 1: Tag Configuration Dialog Box

2. Select **Configuration → Com setup** from the menu bar. The serial communication port dialog box appears (see Figure 2: Communication Port Settings).

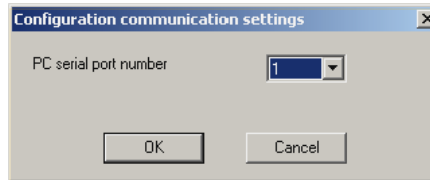


Figure 2: Communication Port Settings

3. Enter the **Serial Port** to which the Tag is connected.
4. Remove both screws on the back of the tag with a Philips screwdriver (see Figure 3: Opening the Tag Case) and open carefully the plastic case.



Figure 3: Opening the Tag Case

5. Connect the RS-232 cable (supplied) to the serial communication port of the PC in which the configuration application is running on
6. Connect the other end of the RS-232 cable to the serial port socket inside the Tag (see Figure 4: Connecting the RS-232 Cable to the Tag – make sure that the red wire of the flat cable is on your right).
7. Press the **Get Tag Status** to check the connection.
8. Press **Get Tag Configuration** to upload the Tag configuration and edit it according to the new configuration desired.

Alternatively, select a configuration file using the **File → Restore** command from the menu bar and browse the available files to load the desired Tag configuration file for editing or direct download to the Tag.

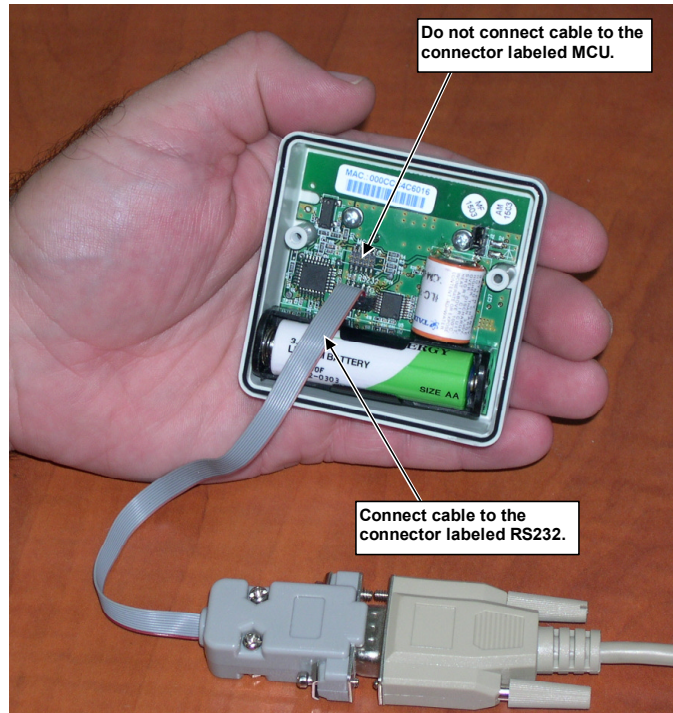


Figure 4: Connecting the RS-232 Cable to the Tag

9. In the **RF Parameters** section, set the following options for Tag transmissions:

Option	Used to
Channel frequency	Select up to 3 Tag transmission channels.

10. In the **Message Parameters** section, set the transmission message mode as follows:

Set	By
Transmission Interval	Select the interval between successive messages [Sec]
Message Repetition	Select the number of times the message is being transmitted within a single burst.
Interval	Select the interval between successive messages within a burst.

11. When complete, review the configuration data in the **Tag configuration download summary** section and press **Download New Configuration** to download the new configuration to the Tag.

Replacing the Internal Battery

The AeroScout™ Tag uses one 3.6V Lithium Thionyl Chloride (LTC) AA size cell. This internal battery can last for more than 5 years when using a transmit interval of 5 minutes.

Table 1 describes the steps for replacing the internal battery.



Step	Instruction
1	Remove the rear panel by unscrewing the case screws (see Figure 3: Opening the Tag Case)
2	Power off the tag Carefully remove the old battery from the battery holder. NOTE: Do not use a metallic object to remove the battery
3	Install new 3.6V lithium Thionyl Chloride 'AA' size battery in the battery holder.  WARNING: Use only batteries from the battery replacement table (Table 2) or others that have been approved by Bluesoft. Make sure that the battery is inserted with the proper polarity otherwise damage to the Tag may occur. There is the danger of explosion if the battery is replaced incorrectly.
4	Close the rear panel by screwing back the screws
5	Dispose of the old lithium Thionyl Chloride battery properly.  Local regulations vary. Federal regulations allow up to 100 kg./month of lithium thionyl chloride batteries to be disposed in common landfill. All leads (the terminals) should be taped to prevent short circuit. The user is responsible for safe disposal.

Table 1 - Replacing the internal batteries.

Manufacturer	Battery part number
Tadiran	TL5903
Xeno Energy	XL-060F
Saft	LS 14500

Table 2 - Battery replacement - part number.

Radio Specifications

Standards compliance: IEEE 802.11b, Wi-Fi

Frequency range: 2.400 – 2.4835 GHz (Subject to local regulation)

Transmission Power: 0dBm to +15dBm

Regulatory Approvals: FCC Part 15, EN 300 328, EN 301 489-1 2001

Environmental Specifications

Dimensions: 63mm x 63mm x 25mm (2.48" x 2.48" x .984")

Weight: 85g (3oz.)

Power: 3.6V Lithium Thionyl Chloride AA size cell

Certifications: FCC Class B, cTUVus, CE mark

Operating temp: -20°C to 65°C (-4°F to 158°F)

Storage temp: -30°C to 70°C (-22°F to 158°F)

Operating humidity: 0% to 95% Non-Condensing

Storage humidity: 0% to 95% Non-Condensing