



Empowering Caregivers

T12s Asset Tag

Deployment & User Guide

0981-xxx-000 REV A

Published: Draft6

FOR EVALUTION PURPOSES ONLY

This document is still being edited and reviewed



CAUTION AND WARNINGS

Electromagnetic radiation emitted from AeroScout Tags may interfere with critical care equipment. Please refer to the equipment manufacturer's user manuals for electromagnetic immunity guidance, and for separation distance recommendations, if applicable.

Use this link, <https://www.stanleyhealthcare.com/support>, to locate our published specifications for STANLEY Healthcare/AeroScout tag transmission frequencies and output power, or contact STANLEY Healthcare Technical Support at +1-800-380-8883 for assistance.

Use of this equipment adjacent to or stacked with other equipment should be avoided because it could result in improper operation. If such use is necessary, this equipment and the other equipment should be observed to verify that they are operating normally.

Portable RF communications equipment (including peripherals such as antenna cables and external antennas) should be used no closer than 1 cm to any part of the ME Equipment or ME System, including cables specified by the manufacturer. Otherwise, degradation of the performance of this equipment could result.

Disclaimer

The information and know-how included in this document are the exclusive property of STANLEY Healthcare and are intended for the use of the addressee or the user alone. The addressees shall not forward to another their right of using the information, know-how or document forwarded herewith, in whole or in part in all matters relating or stemming from or involved therein, whether for consideration or without consideration, and shall not permit any third party to utilize the information, know-how or the documents forwarded herewith or copies or duplicates thereof, unless at the company's consent in advance and in writing. Any distribution, advertisement, copying or duplication in any form whatsoever is absolutely prohibited. The Company reserves the right to sue the addressee, user and/or any one on their behalfs, as well as third parties, in respect to breaching its rights pertaining to the intellectual rights in particular and its rights of whatever kind or type in the information, know-how or the documents forwarded by them herewith in general, whether by act or by omission.

This document is confidential and proprietary to STANLEY Healthcare and is not to be distributed to any persons other than licensed AeroScout Visibility System users or other persons appointed in writing by STANLEY Healthcare.

Trademark Acknowledgements

AeroScout is a trademark of Stanley Black & Decker, Inc. or its affiliates. Other brand products and service names are trademarks or registered trademarks of their respective holders. Below is a partial listing of other trademarks or registered trademarks referenced herein:

Cisco™ is a trademark of Cisco Systems, Inc.

Sun, Sun Microsystems, the Sun Logo, Java, JRE and all other Sun trademarks, logos, product names, service names, program names and slogans that are referred to or displayed in this document are trademarks or registered trademarks of Sun Microsystems, Inc. in the United States and other countries.

This product includes software developed by the Apache Software Foundation (<http://www.apache.org/>).

This product includes code licensed from RSA Data Security.

Skype, SkypeIn, SkypeOut, Skype Me, the Skype Logo and the S logo and other marks indicated on Skype's website are trademarks of Skype Limited or other related companies.

Esper is a trademark of EsperTech, Inc.

Jboss is a trademark of Red Hat Middleware, LLC.

Oracle 10G is a registered trademark of Oracle Corporation and/or its affiliates.

MS SQL Server is a registered trademark of Microsoft Corporation in the United States and/or other countries.

JasperSoft, the JasperSoft Logo, JasperReports, the JasperReports logo, JasperIntelligence, JasperDecisions, JasperAnalysis, Scope Center, Scope Designer, and JasperServer are trademarks or registered trademarks of JasperSoft, Inc. in the United States and other countries.

iCloud Drive, iPad, iPhone, and iPod touch are trademarks of Apple Inc., registered in the U.S. and other countries. App Store® is a service mark of Apple Inc., registered in the U.S. and other countries.

©2020 STANLEY Healthcare. All rights reserved. Doc: 0981-xxx-000 REV A. Published: Draft6.

KB Article: xxxxx.

Table of Contents

Introduction.....	5
What's in the Box?.....	5
Reference Documentation	6
T12s Asset Tag Features	7
Key Features.....	7
Tag Descriptions.....	9
Mounting the Tag	10
Mounting Using the Cradle	10
Mounting Without a Cradle	14
The Tamper Proof Mechanism	15
Mounting with a Tamper	16
Option 1 – Mounting a Tamper with a Cradle and Tie Wraps.....	17
Option 2 – Mounting a Tamper with a Cradle and Screws	18
Option 3 - Mounting a Tamper with Double-Sided Tape	19
Removing Tags from a Cradle.....	20
Tag Management.....	21
Configuring and Updating Tags	21
Updating Tag Firmware and Configuration.....	22
TLS Certificates	22
Tag LED Indications.....	23
Tag Maintenance.....	24
Battery	24
Battery Levels	24
Replacing the Battery	24
Approved Batteries	24
Cleaning the Tag.....	25
T12s Asset Tag & Accessory Ordering SKUs	26
T12s Asset Tag SKUs.....	26

Tag Accessory SKUs	26
Approved Barcode Readers.....	27
Tag Specifications.....	28
Tag Model.....	28
Environmental Specifications.....	28
Physical and Mechanical	28
Electrical	28
Visual Indications.....	28
Radio.....	28
Wi-Fi Security Modes.....	28
Ultrasound Receiver (Optional)	28
Range.....	28
Programmability	29
Certification	29
Regulatory Compliance	30
RoHS.....	30
CE Conformance.....	30
Safety, Warnings and Warranty.....	31

Introduction

The T12s Bi-directional Asset Tag is a component of STANLEY Healthcare's suite of enterprise visibility solutions for location-based applications. The T12s Tag adds further flexibility and scalability to track assets across a wide variety of applications.

Once deployed, the tag uses Wi-Fi bi-directional functionality to receive firmware and configuration updates from MobileView. This removes the need to manually collect, update and re-deploy tags in the field.

The T12s Asset Tags include an advanced tamper-proofing mechanism for security, and can be optionally supplied with an embedded Ultrasound receiver.



Figure 1: T12s Asset Tag

What's in the Box?

The T12s Asset Tag is supplied with the following components:

- T12s Asset Tag
- 1x CR2 800mAh Replaceable Battery
- Cradle with Mounting Accessories

Reference Documentation

The following articles can be accessed by logging into the STANLEY Healthcare Support Community site at the following URL:

www.stanleyhealthcare.com/support.

KB	Document Name
xxxxx	T12s Asset Tag Data Sheet
xxxxx	T12s Asset Tag Release Notes
xxxxx	T12s Asset Tag Deployment & User Guide (This doc)
See KB	Refer to any MobileView Administrator Guide from 5.4 and above
xxxxx	Deployment Manager Setup & User Guide

T12s Asset Tag Features

Key Features

Beaconing and Bi-directional Communication

The T12s Tag utilizes lightweight beaconing communication (for standard messages) and bi-directional Wi-Fi communication with full network association and authentication (for advanced applications). This unique combination provides a flexible and scalable solution for advanced applications. The tag can operate with up to four different network SSIDs in a secure or non-secure mode and is able to store up to two network IPs. The tag also supports both static IP configuration and DHCP.

Wi-Fi Security

The Badges support 802.1x Enterprise security networks with PEAP-MSCHAPv2, WPA2-PSK with AES encryption and an open non-encrypted security mode. *(Configured via the Tag Manager BD application or Deployment Manager app)*

Ultrasound Receiver (Optional)

The T12s Tag is also available with an embedded Ultrasound receiver able to receive signals from ultrasound Exciters. Exciters transmit ultrasound signals, which do not pass through walls, thus helping deliver location reports at room-level accuracy. The T12s Tags with embedded Ultrasound receivers capture the signals and report their exact location over the Wi-Fi network.

Tamper-Proofing (Optional)

Tag can optionally be supplied with an advanced tamper-proofing mechanism for security, which triggers an immediate alert if removed or tampered with in anyway.

Long Battery Life

The T12s Tag has a user replaceable battery that provides up to 2.1 years battery life*. The tag is able to report its battery level which is displayed in MobileView. The T12s Tag also has a motion sensor to conserve battery life when the tag is not in motion.

*Battery life depends on tag type and configuration.

Egress Point Detection

When combined with STANLEY Healthcare Exciters, the T12s Tag provides instant notification when a tagged asset passes through an egress point, such as a gate, doorway or other tightly defined area. Additionally the tag's behavior can be automatically modified while passing through an egress point, such as activating/deactivating the tag, or changing the tag's transmission rates to accommodate different usage scenarios.

Rugged Performance

The T12s Tag passes STANLEY internal testing to IP-54.

Visual Indication

The T12s Tags include a dual-color LED which enables distinct visual indications for specific use cases.

Tag Management

The tags are easily configured and activated wirelessly via the Tag Manager BD application or the Deployment Manager app and a TED device, which are part of the Hardware Manager Kit. The tags can then be reprogrammed using bi-directional communication via MobileView.

Call Button

The tags include a call button that can trigger an event in MobileView, such as emergency alerting or par level events. MobileView events can be defined according to specific button press patterns, such as long press, short press and double press.

Flexible Mounting and Usage Options

A wide variety of mounting options are available for the T12s Tags, such as cradles, adhesives, tie-wraps and screws. The supplied cradle allows indirect mounting of the tags on a wide variety of assets and in various environments.

Tag Descriptions

The following describes the parts of the T12s Asset Tag:

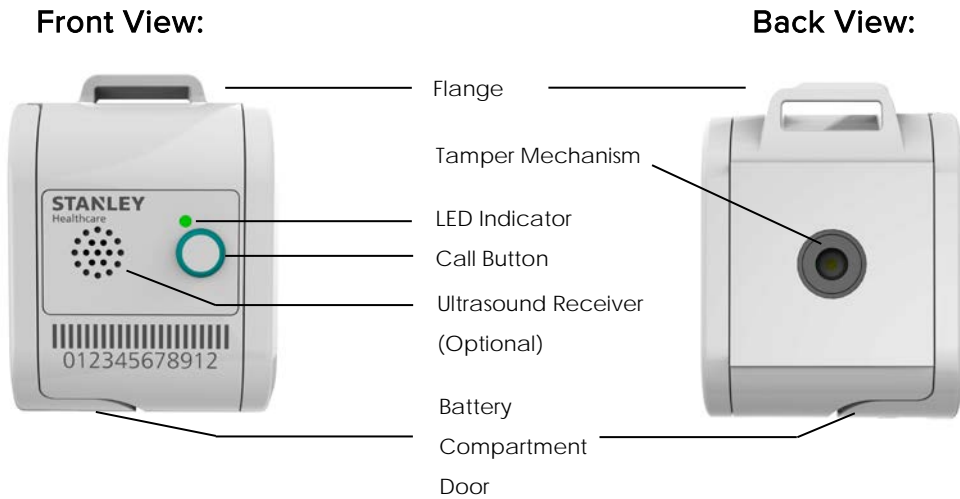


Figure 2: T12s Asset Tag Descriptions

Mounting the Tag

The tag can be mounted using the supplied cradle, or without a cradle by using adhesives (TAC-031, TAC-032) or velcro (TAC-030).



IMPORTANT INSTRUCTIONS BEFORE MOUNTING:

- The mounting surface must be thoroughly cleaned and the surface MUST be dry.
- Only mount on flat smooth surfaces.
- Avoid mounting on rough surfaces.
- When using adhesives (TAC-031, TAC-032), the bond strength will increase over time. At room temperature approximately 50% of ultimate bond strength will be achieved after 20 minutes, 90% after 24 hours and 100% after 72 hours. It is therefore recommended not to use or clean any new tagged asset for at least 72 hours.



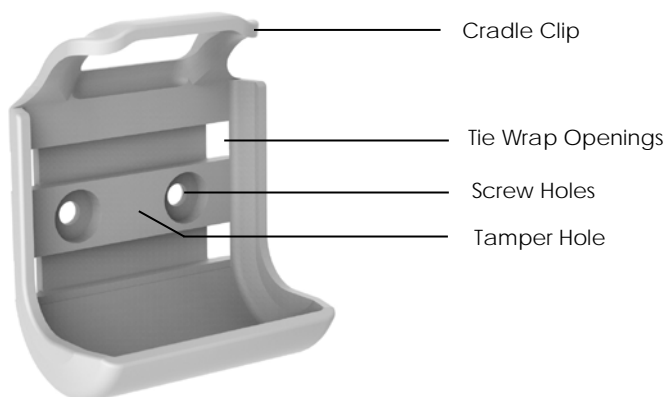
Note

Note the following for T12s Asset Tags with ultrasound:

- Make sure that the microphone on the front cover of the tag is uncovered at all times.
- Avoid placing the tag where it can be constantly knocked by metal or plastic objects. Failing to do so may cause a disruption with the ultrasound signal.

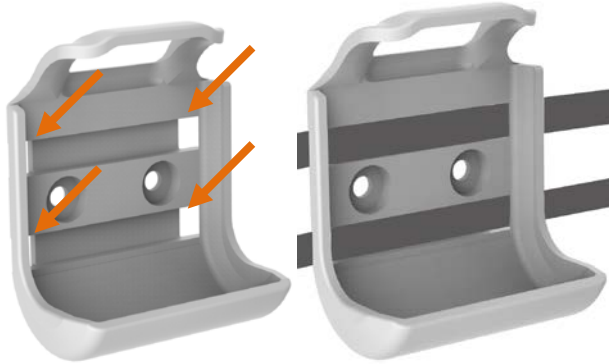
Mounting Using the Cradle

The cradle is mounted to assets using tie wraps, screws, adhesives or velcro. Long tamperers should be used when mounting with the cradle.



To Mount the Cradle Using Tie Wraps

1. Using either 2 (two) short or long tie wraps (TAC-060, TAC-061), thread each tie wrap through the tie wrap openings.



2. Mount the cradle.



3. Insert the tag into the cradle.



To Mount the Cradle Using Adhesives or Velcro

The T12s Cradle can be mounted to an asset or surface by using adhesives, such as double-sided tape or velcro.

1. Insert the tag into the cradle.



2. Apply double-sided tape (TAC-031) or velcro (TAC-030) to the back of the cradle and press and hold the sticker for at least 20 seconds.



3. If using double-sided tape, mount the cradle with tag firmly to the asset or surface and press and hold it in place for at least 20 seconds.

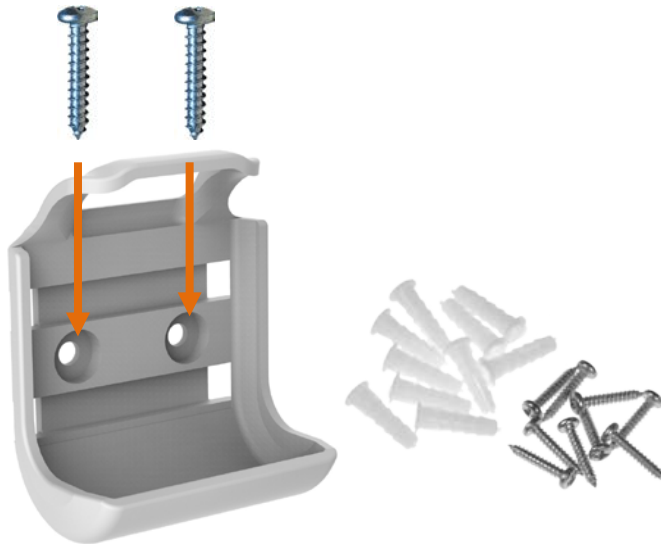


If using velcro, apply the other velcro strip to the asset or surface and firmly mount the cradle with tag to the velcro strip.

To Mount the Cradle Using Screws

The cradle can be mounted to an asset or surface by using the T12s Cradle screw kit.

1. Place and hold the empty cradle firmly on an asset or surface.
2. Screw the 2 (two) screws from the T12s Cradle screw kit (TAC-122) through the cradles screw holes.



3. Insert the tag into the cradle.



Mounting Without a Cradle

The tag can be mounted directly to an asset or surface without the use of a cradle, by using adhesives, such as double-sided tape or velcro. Special double-sided tape with a tamper hole is also available. Short tampers should be used when mounting without a cradle.

To Mount the Tag without a Cradle

1. Apply double-sided tape (TAC-031) or velcro (TAC-030) directly to the back of the tag and press and hold the sticker for at least 20 seconds. If using a tamper, make sure to use the double-sided tape with tamper hole (TAC-032).

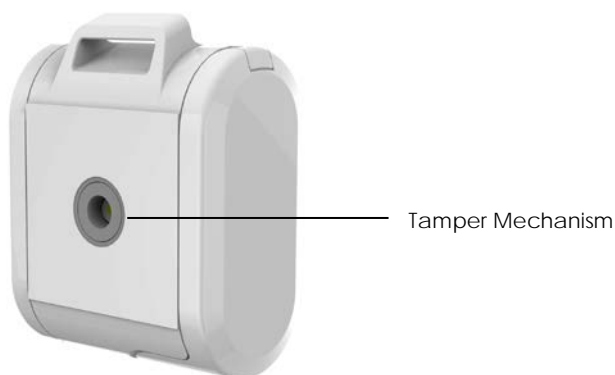


2. Mount the tag firmly to the asset or surface and press and hold it for at least 20 seconds.



The Tamper Proof Mechanism

The T12s Asset Tag is equipped with an anti-tampering switch located on the back of the device. When a tamper is inserted and the tag is pressed and fixed against a surface, with or without a cradle, the switch is activated. The removal of the tag releases the switch and an alert is sent to MobileView.



The following tampers are available:

- Short Tampers (TAC-341); Used when mounting without a cradle using double-sided tape with tamper hole.
- Long Tampers (TAC-340); Used when mounting with the T12s Cradle.



Figure 3: T12s Asset Tag Descriptions

Mounting with a Tamper

Before mounting the tag with a tamper, follow the steps below:

1. Activate the tag and select a configuration ID with Tamper Enabled. For more information please refer to the **Tag Management** section and the *Tag Manager BD User Guide* (KB Article 6025).

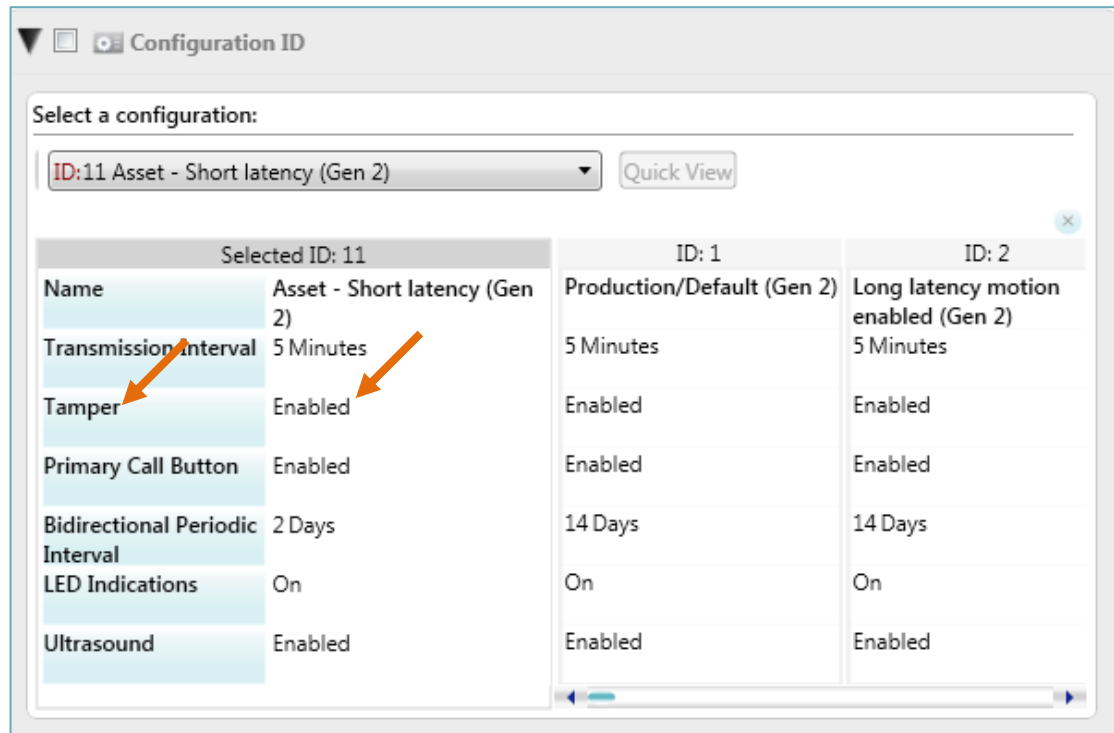


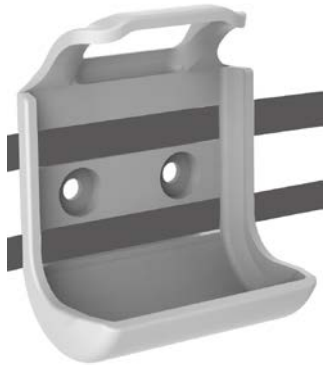
Figure 4: Selecting a Configuration ID in Tag Manager BD

2. Create a tamper event in MobileView. For more information please refer to the latest *MobileView Admin Guide*.
3. Mount the tag according to the options below.

Option 1 – Mounting a Tamper with a Cradle and Tie Wraps

Follow the steps below:

1. Thread the tie wraps through the cradle. See **Mounting with Tie Warps**.



2. Insert the tag into the cradle.
3. Using a long tamper (TAC-340), insert the tamper into the cradle tamper hole.

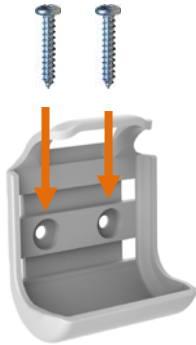


4. Mount the cradle according the mounting instructions, see **Mounting Using a Cradle**. Make sure the tamper is inserted correctly and is pressed against the mounting surface. A click is heard and tag's LED blinks red which indicates the tamper mechanism is active and the tag is correctly mounted.

Option 2 – Mounting a Tamper with a Cradle and Screws

Follow the steps below:

1. Mount the cradle using screws. See **Mounting Using a Cradle**.



2. Using a long tamper (TAC-340), insert the tamper into the tag's tamper mechanism.



3. Insert the tag with tamper into the cradle.



Make sure the tamper is inserted correctly and is pressed against the mounting surface. A click is heard and tag's LED blinks red which indicates the tamper mechanism is active and the tag is correctly mounted.

Option 3 - Mounting a Tamper with Double-Sided Tape

Follow the steps below:

1. Apply the double-sided tape with tamper hole (TAC-032) to the back of the tag and press and hold the sticker for at least 20 seconds.
2. Using a short tamper (TAC-341), insert the tamper into the tag's tamper mechanism.



3. Mount the tag according to the mounting directions. See Mounting Without a Cradle.
4. Make sure the tamper is inserted correctly and is pressed against the mounting surface. A click is heard and tag's LED blinks red which indicates the tamper mechanism is active and the tag is correctly mounted.



Removing Tags from a Cradle

The cradle holds the tag tightly. To remove the tag, hold the tag and push the cradle clip upwards. The tag unlocks.



Tag Management

Configuring and Updating Tags

T12s Asset Tags **must** be initially configured using either the TMBD application (Tag Manager Bi-directional application) or Deployment Manager App, before use.

The applications allow you to activate and configure the following tag parameters according to a site's infrastructure and use case.

Transmission and Wireless:

- Transmission Channels
- IP Settings (Static IP / DHCP)
- Application Servers
- Wi-Fi Settings (Open / WPA2-PSK / 802.1x)

Tag Configuration:

- The tag firmware contains X pre-defined configurations. These configurations define the tag type, beacon rate and ultrasound infrastructure behavior. Each configuration has a unique ID number called a "Static Configuration" which cannot be edited. Only 1 (one) configuration can be selected and used for the tag.

Once the tags have been initially configured using the TMBD application or Deployment Manager, future configurations can then be done wirelessly via MobileView.

The following table shows the available configurations according to the tag firmware. For more information please refer to the *Bi-directional Tags Configuration Details* document (KB Article 7826).

Tag Firmware 1.XX.XX			
Config ID	Tag Type	Ultrasound Infrastructure	Beacon Rate
x	Asset*	Gen1	x
x	Asset*	Gen2	x
x	Asset*	Gen1	x
x	Asset*	Gen2	x

*Asset configurations only applicable for the T12s Asset Tag.

For more details on configuring and updating the tags, see the *Tag Manager BD User Guide (KB Article 6025)* or *Deployment Manager Setup & User Guide (KB 9758)*.

Updating Tag Firmware and Configuration

The T12s Tag automatically checks for updates (firmware and configuration) periodically every 2 (two) days.

MobileView supports the option to update the T12s Tag configuration and firmware over the air (wirelessly). A group of tags or tags associated to a specific category can be configured simultaneously.

For more details see the *Tag Manager BD User Guide (KB Article 6025)* or *Deployment Manager Setup & User Guide (KB 9758)*.

TLS Certificates

The tag supports TLS Certificates for secure communication with MobileView.

Tag LED Indications

T12s Tags include a dual-color LED (red and green) for visual indications. These indications are described in the table below.

The following symbols are used:

- = Long blink
- = Short blink
- = Quick flash

Action		LED Indication
Tag Activation	3 second Press	3 short red blinks (• • •)
Forced BD Session	10 second Press	3 short red blinks (• • •)
Button Presses	Short Press	1 short green blink (•)
	Long Press	1 long green blink (—)
	Double Press	2 short green blinks (• •)
Tamper	Activated	1 long green blink (—)
	Released	1 long red blink (—)

Tag Maintenance

Battery

The T12s Asset Tag uses one CR2 800mAh replaceable battery that can provide power for up to 2.1 years*.

*Battery life depends on configuration and use cases.

The tag's battery life is significantly reduced if used in extremely low temperatures (below -20 °C, -4°F).

Battery Levels

The T12s Asset Tag has the following 3 (three) battery levels that are shown in MobileView:

- **High** – Indicates the tag's battery capacity is between 100%-75%
- **Medium** – Indicates the tag's battery capacity is between 75%-30%
- **Low** – Indicates the tag's battery capacity is between 30% – 0%

Replacing the Battery

Approved Batteries

Only the following approved battery must be used:

- CR2 800mAh

To replace the battery:

1. To open the battery compartment door, gently insert a small flat head screwdriver into the compartment door opening and gently rotate the screwdriver.



2. Remove the battery.
3. Install a new and approved CR2 800mAh battery.
4. Close the battery compartment door until it clicks in place.



WARNING: Used batteries should be disposed of according to facility procedures in your jurisdiction.

Cleaning the Tag

For approved cleaning methods and products, please refer to the **Tag Maintenance Cleaning & Sanitizing Guide** KB Article 8269.

T12s Asset Tag & Accessory Ordering SKUs

T12s Asset Tag SKUs

The following T12s Asset Tag SKUs are available for ordering:

Tag SKUs	Tag Description
SKU: TAG-1200S-C	T12s Asset Tag with Call Button
SKU: TAG-1200S-CU	T12s Asset Tag with Call Button and Ultrasound
SKU: TAG-1200S-CUT	T12s Asset Tag with Call Button, Ultrasound and Tamper

Tag Accessory SKUs

Accessory	SKU / KB Article
T12s Tag plastic housing with Ultrasound receiver, Call Button and Tamper (20 pack)	SKU: XXXXX
T12s Cradle (50 pack)	SKU: XXXXX
Velcro Attachment Kit (50 pairs per pack)	SKU: TAC-030
Adhesive Tape Patches (50 pack)	SKU: TAC-031
Adhesive Tape Patches with tamper hole (50 pack)	SKU: TAC-032
Tie Wraps 2" (100 pack)	SKU: TAC-060
Tie Wraps 5" (100 pack)	SKU: TAC-061
T12s Cradle Screw Kit (50 pack)	SKU: TAC-122
Short Tamper Switches (100 pack)	SKU: TAC-341
Long Tamper Switches (100 pack)	SKU: TAC-340
T12s Tag Batteries (25 pack)	SKU: XXXX
T12s Tag Batteries (50 pack)	SKU: XXXX
Hardware Manager Kit for the configuration of Tags and Exciters	SKU: HWM-1000
Bi-directional Tags Firmware Versions download	KB Article 7606

Approved Barcode Readers

The following barcode readers have been tested with the T12s Tags:

- Honeywell, Xenon XP 1950HD
- Zebra Symbol DS4308

Tag Specifications

Tag Model

- T12s Asset Tag

Environmental Specifications

- **Operating Temperature Range:** -0°C to +50°C (32°F to +122°F)
- **Tag Storage Temperature Range:** -40°C to +85°C (-40°F to 185°F)
- **Humidity:** 0% to 95% RH non-condensing
- **Ingress Protection Rating:** IP-54

Physical and Mechanical

- **Dimensions LWH:** 44 x 34 x 20mm (1.7 x 1.3 X 0.78inch)
- **Weight:** +/- 33g (1.16oz)

Electrical

- **Battery:** 1 x CR2 800mAh replaceable battery

Visual Indications

- **LEDS:** Dual-color LEDS (red & green)

Radio

- 802.11 b/g compliant (2.4 GHz)
- Low frequency receiver for chokepoint detection (125kHz)
- **Transmission power:** up to +18dBm
- Patented clear channel sensing avoids interference with wireless networks

Wi-Fi Security Modes

- Open, non-encrypted
- WPA2-PSK(AES)
- 802.1x Enterprise security (PEAP-MSCHAPv2)

Ultrasound Receiver (Optional)

- Frequency 40kHz

Range

- **Outdoor range:** Up to 200m (650 feet)
- **Indoor range:** Up to 80m (260 feet)

Programmability

- Tag configurations*
- Transmission channels
- IP Settings

*After initial setup, configuration changes are done over-the-air via MobileView.

Certification

- **Radio, EMC:**

FCC Part 15, sub-part C class B, sub-part BEN 300-328 V2.1.1:16
EN 300-328, EN 300-330, EN 301-489, RSS 210 (Canada)

- **Safety:**

CE, cTUVus (EN62369-1)

Regulatory Compliance

RoHS

CE Conformance



Safety, Warnings and Warranty

In case of direct attachment to an ordinary person's body – the ambient temperature should not exceed +48C

FCC STATEMENT

This equipment has been tested and found to comply with the limits for a Class B digital device, pursuant to Part 15 of the FCC rules. These limits are designed to provide reasonable protection against harmful interference in a residential installation. This equipment generates uses and can radiate radio frequency energy and, if not installed and used in accordance with the instructions, may cause harmful interference to radio communications. However, there is no guarantee that interference will not occur in a particular installation. If this equipment does cause harmful interference to radio or television reception, which can be determined by turning the equipment off and on, the user is encouraged to try to correct the interference by one or more of the following measures:

- a) Reorient or relocate the receiving antenna.
- b) Increase the separation between the equipment and receiver.
- c) Connect the equipment to an outlet on a circuit different from that to which the receiver is connected.
- d) Consult the dealer or an experienced radio/TV technician.

This device complies with Part 15 of the FCC Rules.

Operation is subject to the following two conditions:

- a) This device may not cause harmful interference
- b) This device must accept any interference received, including interference that may cause undesired operation.

FCC Warning

Modifications not expressly approved by the manufacturer could void the user authority to operate the equipment under FCC Rules.

WARNING: This device complies with Part 15 of the FCC Rules and RSS-210 of Industry and Science Canada. Operation is subject to the following two conditions: (1) This device may not cause harmful interference, and (2) this device must accept any interference received, including interference that may cause undesired operation.

This device complies with Industry Canada license-exempt RSS standard(s). Operation is subject to the following two conditions: (1) this device may not cause interference, and (2) this device must accept any interference, including interference that may cause undesired operation of the device.

Le présent appareil est conforme aux CNR d'Industrie Canada applicables aux appareils radio exempts de licence. L'exploitation est autorisée aux deux conditions suivantes : (1) l'appareil ne doit pas produire de brouillage, et (2) l'utilisateur de l'appareil doit accepter tout brouillage radioélectrique subi, même si le brouillage est susceptible d'en compromettre le fonctionnement.

**STANLEY Healthcare ("STANLEY") Standard Warranty and Disclaimer
For STANLEY Healthcare AeroScout® Products ("Products")**

Limited Warranty and Disclaimer. STANLEY warrants that commencing from the date of delivery to Customer and continuing for a period of one (1) year thereafter (the "Warranty Period"), the hardware components of STANLEY Healthcare AeroScout® Products (the "Hardware") will be free from defects in material and workmanship under normal use subject to the terms hereof. The date of shipment of the Hardware by STANLEY is set forth on the packaging material in which the Hardware is shipped. This limited warranty extends only to the original user of the Hardware. Customer's sole and exclusive remedy and the entire liability of STANLEY and its suppliers under this limited warranty will be, at STANLEY's or its service center's option, shipment of replacement Hardware components within the Warranty Period or a refund of the purchase price if the Hardware is returned to the party supplying it to Customer, if different than STANLEY, freight and insurance prepaid. STANLEY replacement parts used in Hardware repair may be new or equivalent to new, and STANLEY reserves the right to provide replacement Hardware components of similar form and function, as long as the functionality is equal or better than Customer's original Hardware components. STANLEY's obligations hereunder are conditioned upon the return of affected Hardware in accordance with STANLEY's then-current Return Material Authorization (RMA) procedures. Notwithstanding the foregoing, the warranty for TAG Hardware specifically designated for sterilization via autoclave or other sterilization methods shall have a warranty period of 350 sterilization cycles from the date of delivery; provided, however, that sterilization outside of environmental specifications approved in any applicable user documentation voids all warranties.

Extended Warranty: STANLEY offers an extended warranty, for a fee, on AeroScout products. Within the one (1) year of the standard warranty, additional warranty of two (2) years may be purchased. Additional warranty years may only be purchased once within the first one (1) year, or prior to warranty expiration. A maximum of three (3) total warranty years are available for Hardware.

Exclusions: The warranty set forth above will not apply if the Hardware or the Product (i) has been altered, except by STANLEY, (ii) has not been installed, operated, repaired, or maintained in accordance with instructions supplied by STANLEY, (iii) has been subjected to abnormal physical or electrical stress, misuse, negligence, or accident; or (iv) is provided for beta, evaluation, testing, or demonstration purposes for which STANLEY does not receive a payment of purchase price or license fee.

In addition, this warranty shall not cover the following:

- Batteries (other than DOA -Dead On Arrival).
- Plastics (including defects in appearance, cosmetics, decorative or structural items including framing and non-operative parts).
- Tag Calibration.
- Expenses related to removing or reinstalling the Products.
- Defects or damage that result from the use of Non-STANLEY certified Products, Accessories, Software or other peripheral equipment.

- Defects or damages resulting from service, testing, adjustment, installation, maintenance, alteration, or modification in any way by any party other than STANLEY, or its authorized service partners.
- All software contained in or otherwise part of STANLEY Healthcare AeroScout® Products, which is covered by STANLEY's separate software warranty contained in the separate software license agreement with respect to such Products.

The warranty set forth above shall not be enlarged and no obligation or liability shall arise out of STANLEY's rendering of technical advice, facilities or service in connection with Customer's purchase of the STANLEY Healthcare AeroScout® Products.

Except for the foregoing warranties, which shall be the exclusive warranties with respect to any Products, STANLEY MAKES NO WARRANTY OR REPRESENTATION OF ANY KIND, EXPRESS OR IMPLIED, WRITTEN OR ORAL, REGARDING INFORMATION GIVEN OR THE PRODUCTS OR SERVICES SUPPLIED AND EXPRESSLY DISCLAIMS ALL EXPRESS AND IMPLIED WARRANTIES, REPRESENTATIONS AND CONDITIONS, INCLUDING WITHOUT LIMITATION ALL WARRANTIES AND CONDITIONS OF QUALITY, NON-INFRINGEMENT, MERCHANTABILITY AND SUITABILITY OR FITNESS FOR A PARTICULAR PURPOSE TO THE EXTENT PERMITTED BY LAW. STANLEY WILL NOT BE LIABLE FOR CONSEQUENTIAL, INCIDENTAL, INDIRECT OR PUNITIVE DAMAGES FOR ANY CAUSE OF ACTION, WHETHER IN CONTRACT, TORT OR OTHERWISE. Consequential, incidental and indirect damages include, but are not limited to, lost profits, lost revenue and loss of business opportunity, whether or not STANLEY was aware or should have been aware of the possibility of these damages.

About STANLEY Healthcare

Over 15,000 hospitals and senior living communities rely on STANLEY Healthcare solutions to empower caregivers to deliver better care. STANLEY Healthcare is a part of Stanley Black & Decker and a proud supporter of the Alzheimer's Association®. Learn more at stanleyhealthcare.com.

STANLEY Healthcare

75 Portsmouth Blvd
Suite 220
Portsmouth, NH 03801
Tel: +1-888-622-6992

North America

E-mail: stanleyhealthcare@sbdinc.com

Asia-Pacific

E-mail: stanleyhealthcare-asiapac@sbdinc.com

Europe

E-mail: shs-uk@sbdinc.com

Latin America

E-mail: stanleyhealthcare-latam@sbdinc.com

Middle East

E-mail: stanleyhealthcare-MEA@sbdinc.com