

AirSpot 4G CPE

Quick Start Guide

Getting started with your device.



WELCOME TO THE LTE CPE

This Quick Start Guide for the AirSpot 4G includes the following safety symbols. Please use your AirSpot safely and correctly.

Additional information

Optional methods or shortcuts for an action

Potential problems or conventions that need to be specified

Package Contents

Please check the package contents before installation:

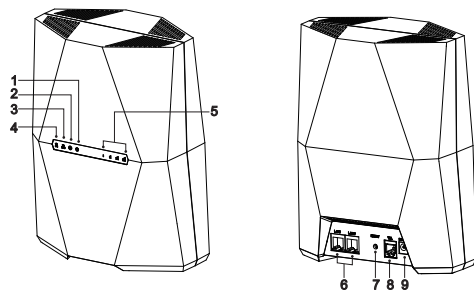
- > AirSpot 4G CPE
- > Power Adapter
- > Ethernet Cable
- > Quick Start Guide
- > Warranty Card

> If you find any missing or damaged items, please contact your local vendor.

GETTING STARTED

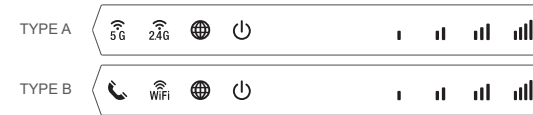
The figures provided in this document are for reference only.

Equipment Appearance



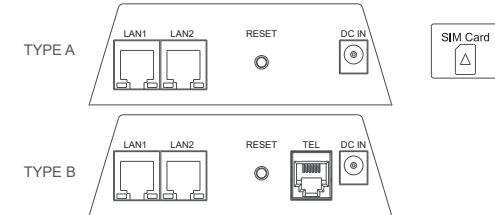
1	POWER Indicator	5	Signal Indicator	9	Power Port
2	Internet Indicator	6	LAN Port		
3	2.4G WiFi Indicator	7	Reset Button		
4	5G WiFi Indicator	8	TEL Port(optional)		

LED INDICATION



Indicator	Status	Description
	Steady on	Power On
	Off	No Power Supply
	Steady on	Internet Available
	Off	Internet Unavailable
	Steady on	2.4G WiFi Available
	Off	2.4G WiFi unavailable
	Blinking (500ms interval)	Data Transmission
	Steady on	5G WiFi Available
	Off	5G WiFi unavailable
	Blinking (500ms interval)	Data Transmission
	Blinking (1sec interval)	Setting up WPS connection
	Steady on	Display the current LTE network signal, the stronger signal, the more bars on
	Off	No Signal
	Blinking one by one	Firmware upgrade
	Steady on	2.4G or 5G or both WIFI available
	Off	Both 2.4G and 5G WIFI unavailable
	Blinking (500ms interval)	Data in transit
	Blinking (1sec interval)	WPS is connecting
	Steady on	Registered to SIP server
	Off	Unregistered
	Blinking (500ms interval)	In call

INTERFACES AND BUTTONS



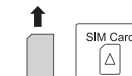
Interface & button	Description
DC IN	DC power input port
LAN1-LAN2	Connects computer, switches (non PoE devices) or other LAN devices
RESET	Press 1s to reboot device. Press 10s and more, AirSpot will restore to factory mode. You will lose user defined settings when you reset the AirSpot. Be cautious when clicking Reset Button.
SIM	USIM slot
TEL	Voice port

SET UP THE HARDWARE

Insert SIM Card

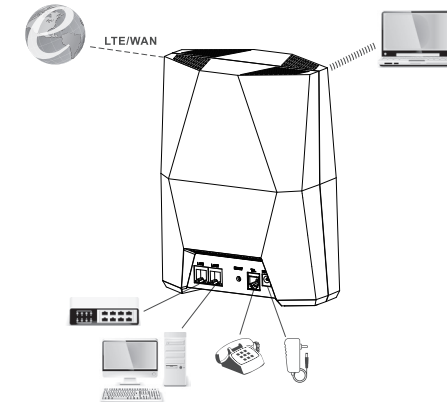
Make sure the CPE is turned off before you insert or remove your SIM card. Otherwise, the CPE and SIM card may be damaged.

Please insert your SIM card as following:



HARDWARE CONNECTION

The figure is for reference only. Connect the hardware according to your requirements.



Step 1 Connect the supplied power adapter to the CPE.

Step 2 Connect other devices.

- You can connect your computer or classic Switch via Ethernet cable to LAN port.
- You can connect your laptop via Wi-Fi.

Step 3 Power on AirSpot.

When you are using the AirSpot, you can adjust its position and orientation to get a stronger LTE signal. The Signal Indicator LED displays signal power levels.

PN: 6061A4453323

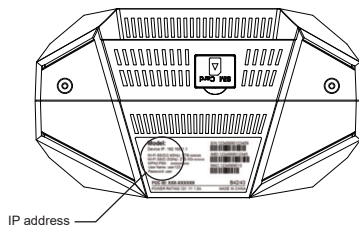


SET UP CPE

Login to Web Management

To log into the web management to configure and manage the AirSpot:

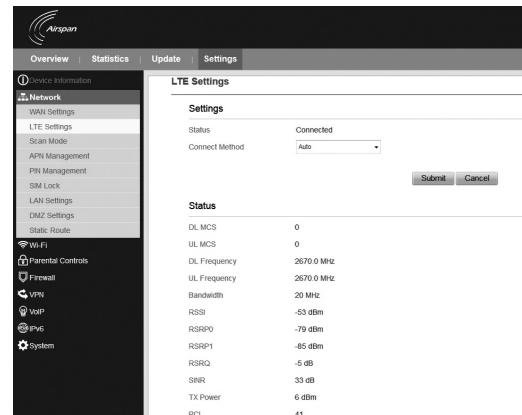
- Step 1 Make sure AirSpot is connected to your PC.
- Step 2 Launch Internet Explorer, type **http://192.168.1.1** in the address bar, and press **Enter**.



- Step 3 Enter the **User Name** and **Password**, and click **Login**.

LTE SETTINGS

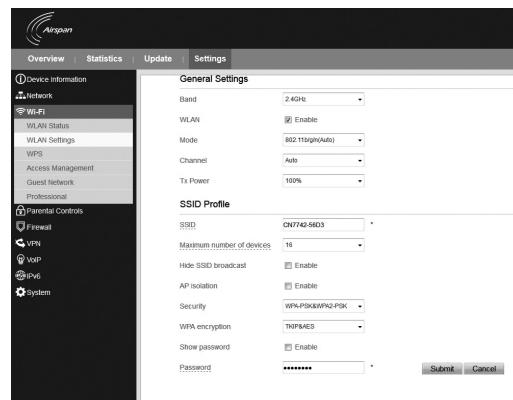
- Step 1 Make sure AirSpot is connected to your PC.
- Step 2 Login to web management.
- Step 3 Select **Network**→**LTE Settings**.
- Step 4 Set **Connect Method** and Click **Submit**.



- ☞ The default configuration are Auto connect and Scan full band. If you want to connect to the 4G network according to your requirements, set the Connect Method to **Manual**, and scan a specified band.

WI-FI SETTINGS

- Step 1 Make AirSpot is connected to your PC.
- Step 2 Login to the web management.
- Step 3 Select **Wi-Fi**→**WLAN Setting**.
- Step 4 In the General Settings area, please check WLAN Enable box to enable Wi-Fi.
- Step 5 In the SSID Profile area, modify the SSID as per your LTE-Router.
- Step 6 To ensure data safety, it is recommended that you change the default Wi-Fi password.
- Step 7 Click **Submit** to save the configuration.



TROUBLESHOOTING

The POWER indicator does not turn on.

- Make sure that the power cable is connected properly and the AirSpot is powered on.
- Make sure that the power adapter is compatible with the AirSpot.

Failure to login to the web management .

- Make sure that the AirSpot is started.
- Verify that the AirSpot is correctly connected to the computer through Wi-Fi or a network cable.

The AirSpot fails to search for the wireless network.

- Check that the power adapter is connected properly.
- Check that the CPE is placed in an open area that is far away from obstructions, such as concrete or wooden walls.
- Check that the CPE is placed far away from household electrical appliances that generate strong electromagnetic field, such as microwave ovens, refrigerators, and satellite dishes.

The power adapter of the AirSpot is overheated.

- The AirSpot will be overheated after being used for a long time. Therefore, power off the CPE when you are not using it.
- Check that the AirSpot is properly ventilated and shielded from direct sunlight.

The parameters are restored to default values.

- If the CPE is powered off unexpectedly while being configured, the parameters may be restored to the default settings.
- After configuring the parameters, save the configuration file to an external device to quickly restore the AirSpot to the desired settings if needed.

- ☞ If the problem persists, please contact authorized local service suppliers.

- ⚠ AirSpot does not support SIM card hot plug.

This product has reached the standard of shipment inspection.



FCC Regulations:

This device complies with part 15 of the FCC Rules. Operation is subject to the following two conditions: (1) This device may not cause harmful interference, and (2) this device must accept any interference received, including interference that may cause undesired operation.

This equipment has been tested and found to comply with the limits for a Class B digital device, pursuant to part 15 of the FCC Rules. These limits are designed to provide reasonable protection against harmful interference in a residential installation. This equipment generates, uses and can radiate radio frequency energy and, if not installed and used in accordance with the instructions, may cause harmful interference to radio communications. However, there is no guarantee that interference will not occur in a particular installation. If this equipment does cause harmful interference to radio or television reception, which can be determined by turning the equipment off and on, the user is encouraged to try to correct the interference by one or more of the following measures:
—Reorient or relocate the receiving antenna.
—Increase the separation between the equipment and receiver.
—Connect the equipment into an outlet on a circuit different from that to which the receiver is connected.

—Consult the dealer or an experienced radio/ TV technician for help.
Changes or modifications not expressly approved by the manufacturer could void the user's authority to operate the equipment.

FCC RF Radiation Exposure Statement

This equipment complies with FCC radiation exposure limits set forth for an uncontrolled environment. To comply with FCC RF Exposure compliance requirements, this grant is applicable to only Mobile Configurations. The antennas used for the transmitter must be installed to provide a separation distance of at least 20cm from all persons and must not be co-located or operating in conjunction with any other antenna or transmitter.

Indoor use only.