



GWU-300/310/320 User Manual

(Mobile WIMAX 2.3/2.5/3.5GHz USB Dongle Modem)

Document Number: IGIM0904WLSWUMWG005

Version: 0.6

Issued: April 12st, 2010

Revision History

Revision	Date	Description	Author
0.1	2009.03.30	Original Draft	S.K. Park
0.2	2009.07.30	Modified a part of channel configuration and authentication setting	S.K. Park
0.3	2009.08.14	Modified miscellaneous things	S.K. Park
0.4	2009.09.01	Change for New UI CM.	M.Y. Jung
0.5	2009.10.15	Authentication Settings	M.Y. Jung
0.6	2010.04.12	Modified to GWU-3XX	M.Y. Jung

Reproduction or use of editorial or pictorial content in any manner is prohibited without written permission. Specifications and content may change without notice.

The IGI Mobile name and logo and other designated names, marks, and phrases are trademarks or registered trademarks of IGI Mobile, Inc.

Table of Contents

1	Introduction.....	4
2	Appearance.....	5
2.1	Top View	5
2.2	Side View	5
3	Installation	6
3.1	GWU-310 CM (Connection Manager) Install.....	6
3.1.1	Language Select.....	6
3.1.2	Welcome.....	6
3.1.3	Connect USB Modem.....	7
3.1.4	Select Destination Folder.....	7
3.1.5	Install Confirm.....	8
3.1.6	CM Installation	8
3.1.7	Device Driver Installation	9
3.1.8	Install Finished	9
4	How to Use CM (Connection Manager)	10
4.1	Run Connection Manager Program	10
4.2	Channel Configuration.....	11
4.3	Authentication Setting	13
4.3.1	EAP-AKA	13
4.3.2	EAP-TLS , EAP-TTLS	15
4.4	Connecting	17
4.5	Device Change	18
5	Internet Test	19
5.1	Internet Explorer	19

1 Introduction

This document let you know how to use and install device for mobile WIMAX USB dongle modem. This device is USB dongle type modem for high speed mobile internet access through mobile WIMAX network.

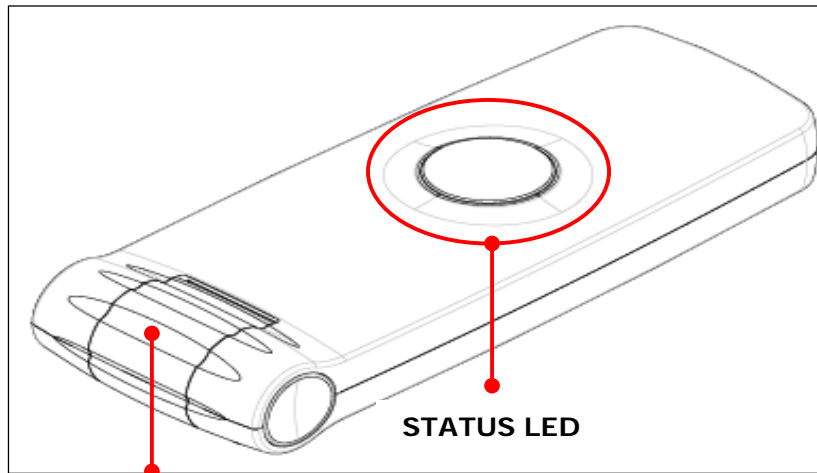


- Model : GWU-300/GWU-310/GWU-320
- Standard : Mobile WiMAX Wave2/MIMO, IEEE 802.16e
- Frequency : 2.3/2.5/3.5GHz
- Interface : USB 2.0
- Antenna : 2 internal diversity antenna
- Data Throughput : Downlink 33 Mbps, Uplink 16 Mbps
- O/S : Windows 2000, XP, VISTA, WIN7, MAC OS
- Dimension : 29 x 66 x 8 mm
- Weight : 14 g

2 Appearance

2.1 Top View

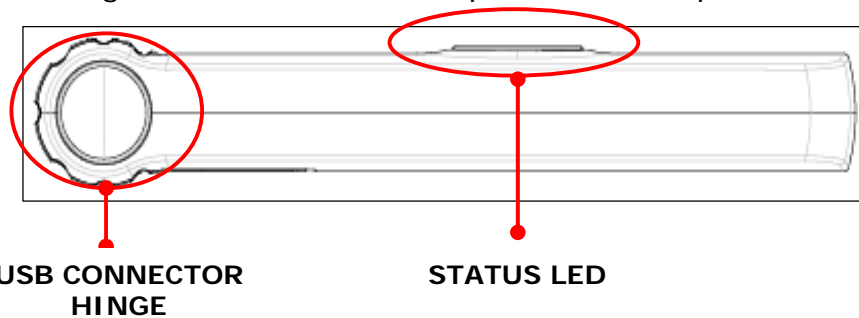
External drawing of GWU-310 and components description



COMPONENT	DESCRIPTION
USB CONNECTOR	USB Connect
STATUS LED	Status Display LED

2.2 Side View

External drawing of GWU-310 and components description



COMPONENT	DESCRIPTION
USB CONNECTOR HINGE	USB Connector hinge
STATUS LED	GWU-310 RF status display LED

3 Installation

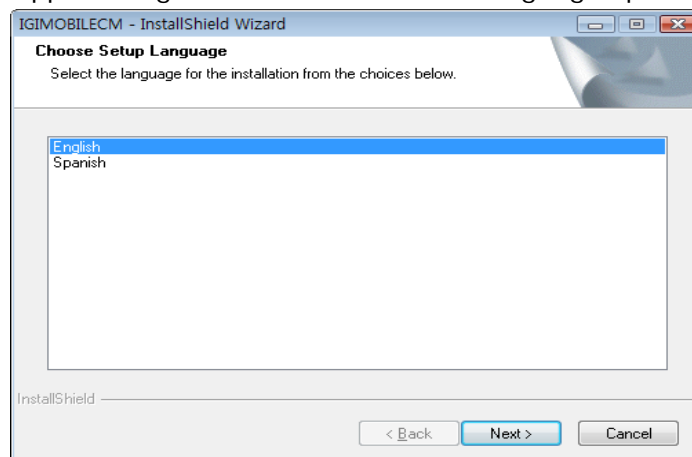
3.1 GWU-310 CM (Connection Manager) Install

Insert GWU-310 USB WIMAX Modem to your PC. After that, you can see the dialog that is started automatically.



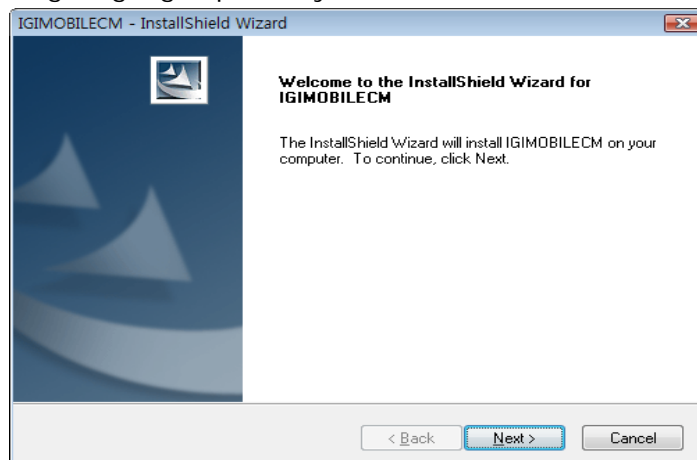
3.1.1 Language Select

GWU-310 CM supports English and Korean. Select language option and click "Next".



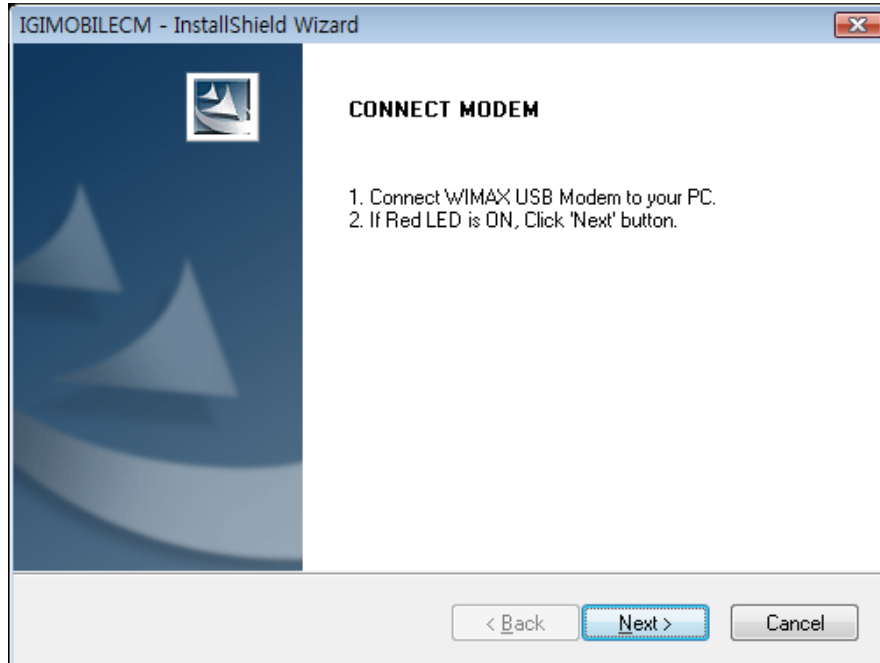
3.1.2 Welcome

After you selecting language options, you can see a welcome view. Click "Next".



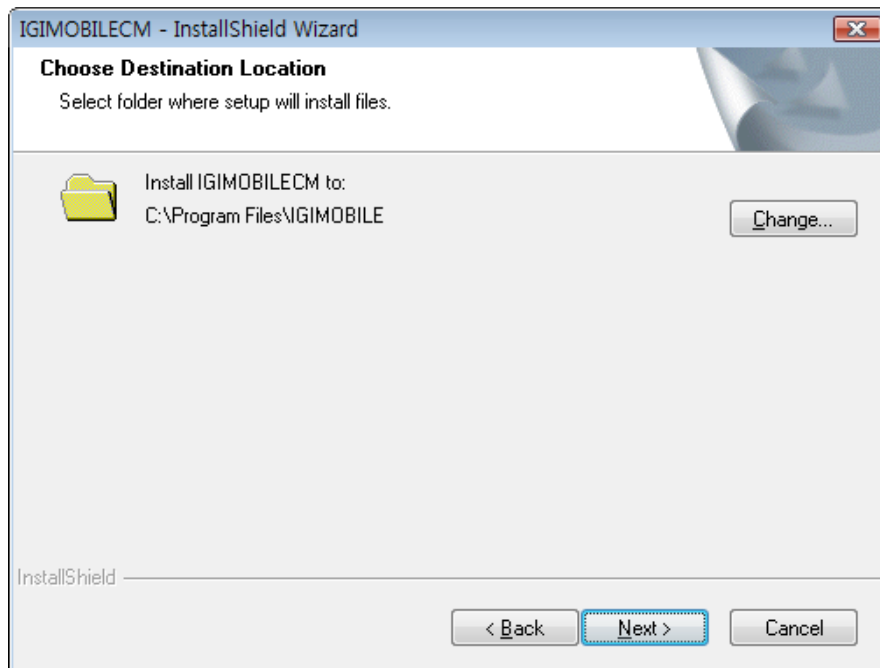
3.1.3 Connect USB Modem

If you select device type to USB Modem, you must connect USB Modem to PC for installing device driver on your PC



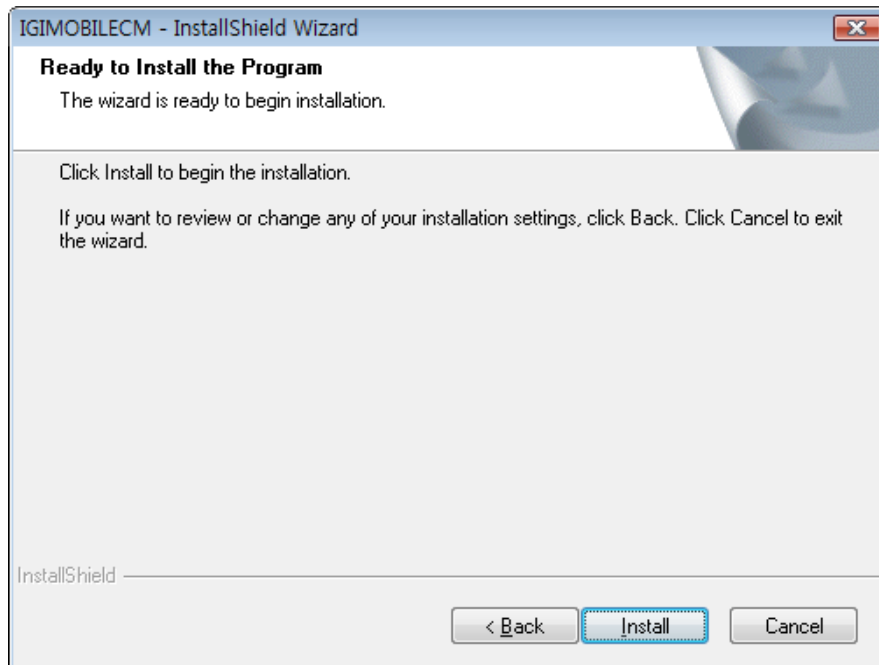
3.1.4 Select Destination Folder

Select installation folder that you want.



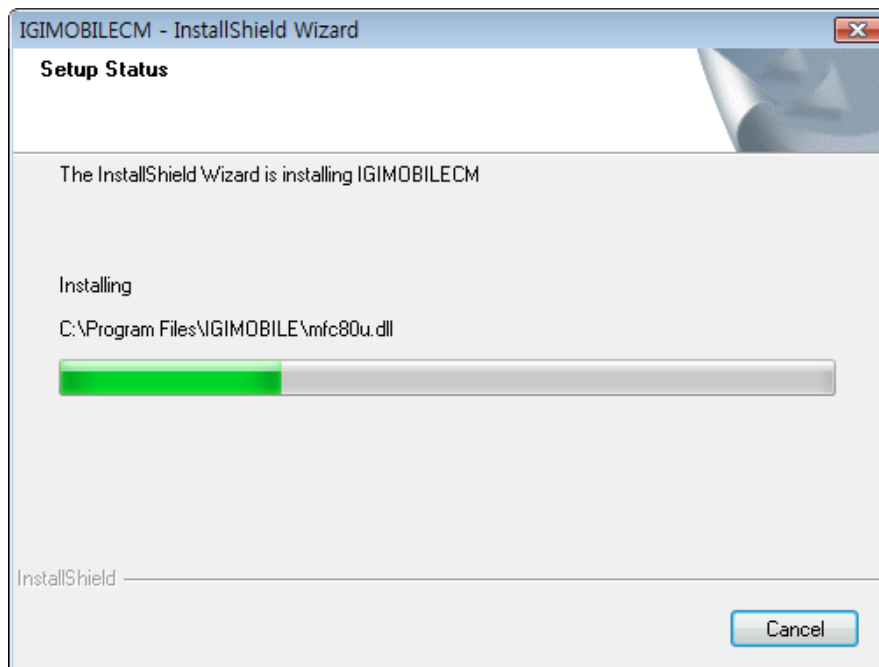
3.1.5 Install Confirm

If you finished selection install option, click "Next". If you change option again, click "Back" and change option.



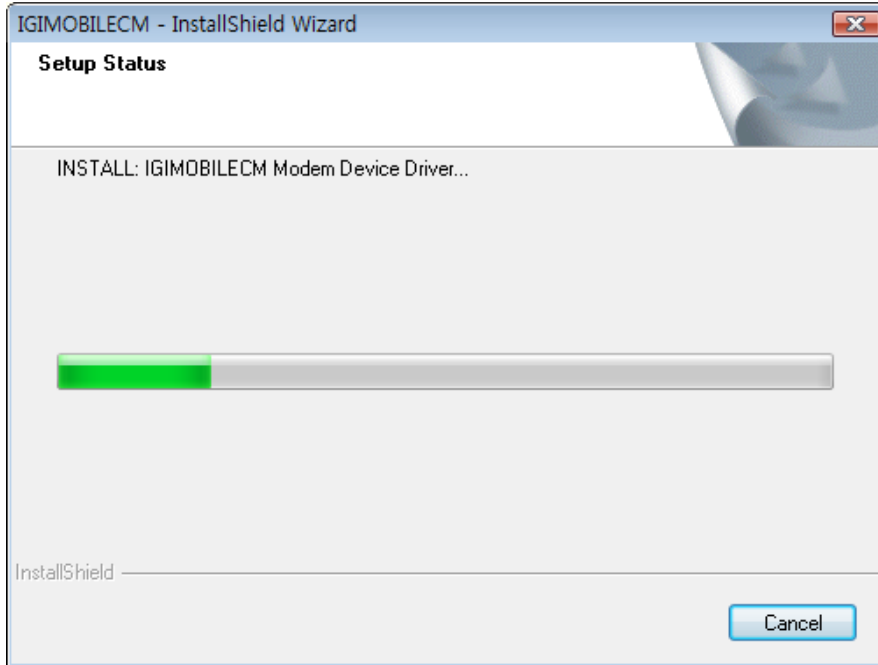
3.1.6 CM Installation

GWU-310 CM Installation view.

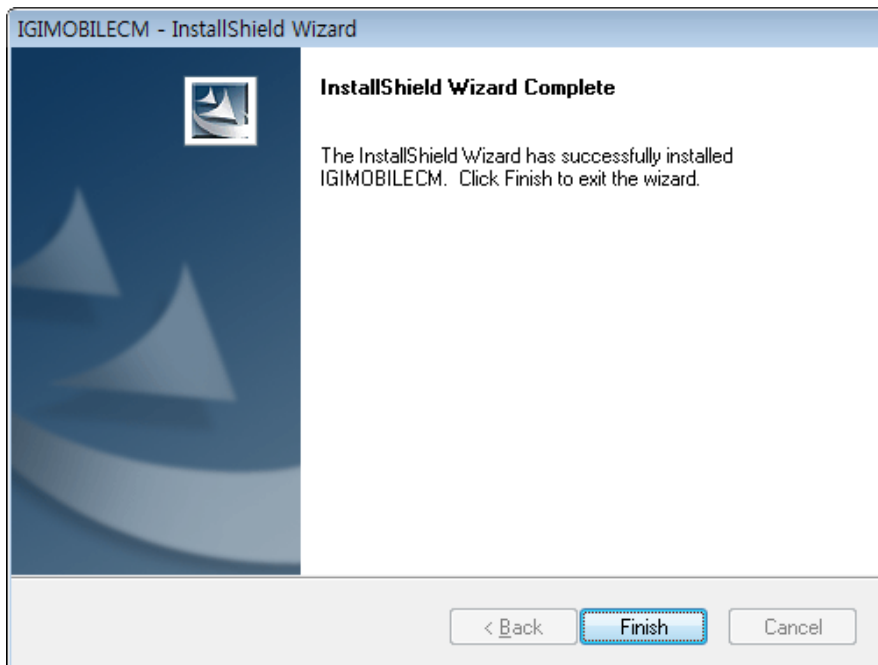


3.1.7 Device Driver Installation

GWU-310 CM Install wizard will install device driver and protocol driver automatically.



3.1.8 Install Finished

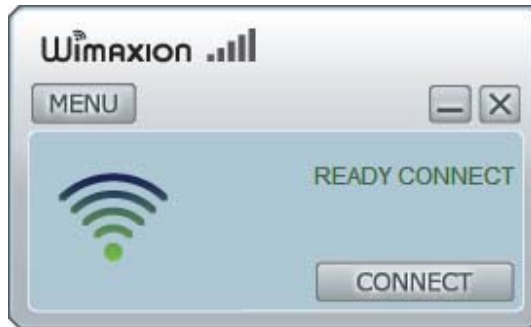


4 How to Use CM (Connection Manager)

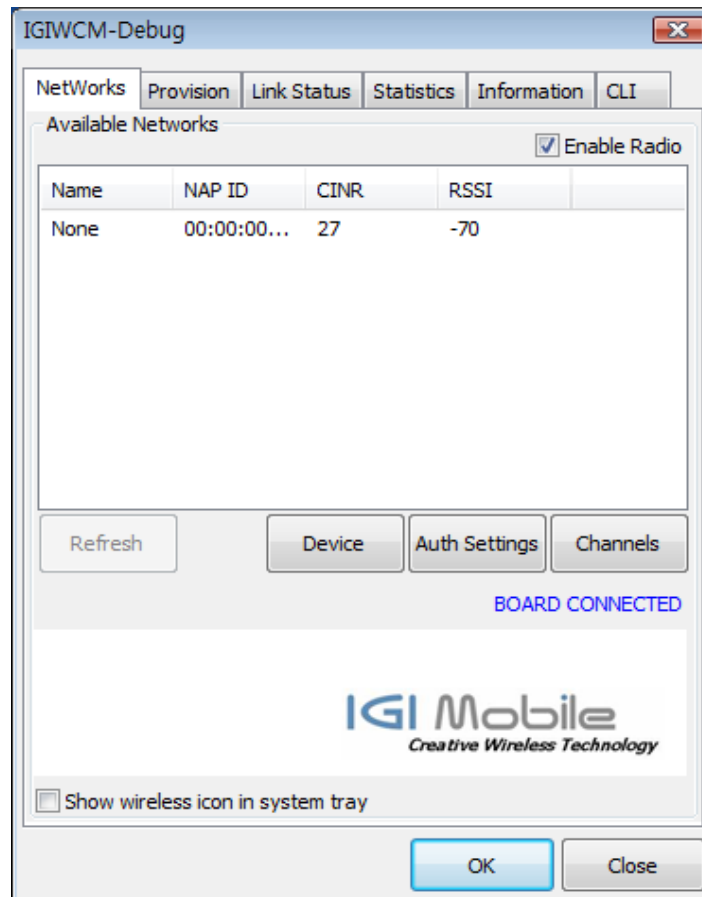
4.1 Run Connection Manager Program

After installation, IGIWIMAXCM will be started automatically. If it is started, it will find our USB modem and will get information automatically like below.

UI for normal users.

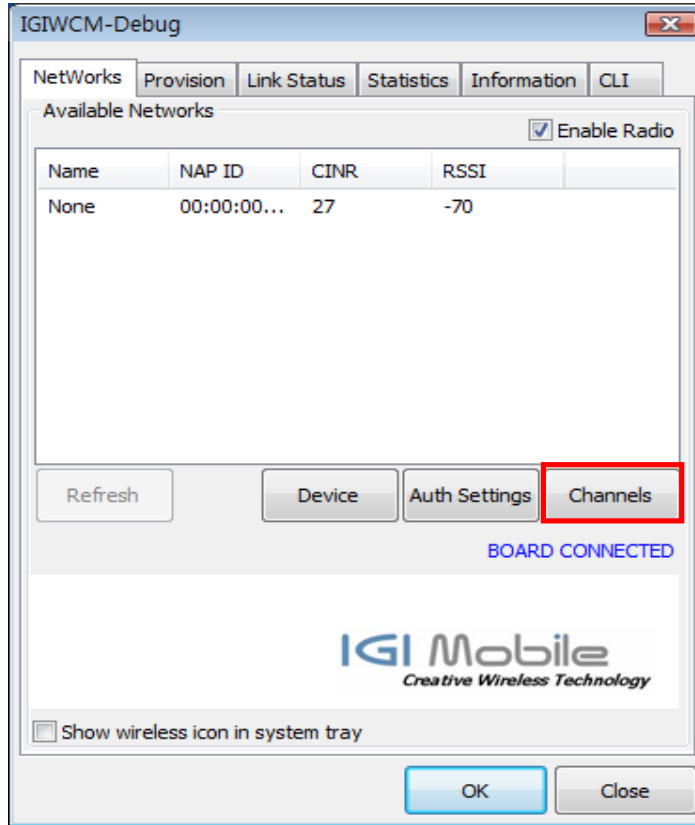


UI for test engineers. (Click "Wimaxion" logo at above UI for users and then type "igimobilecm" + "Enter Key", Then you can see a debug view like below!)

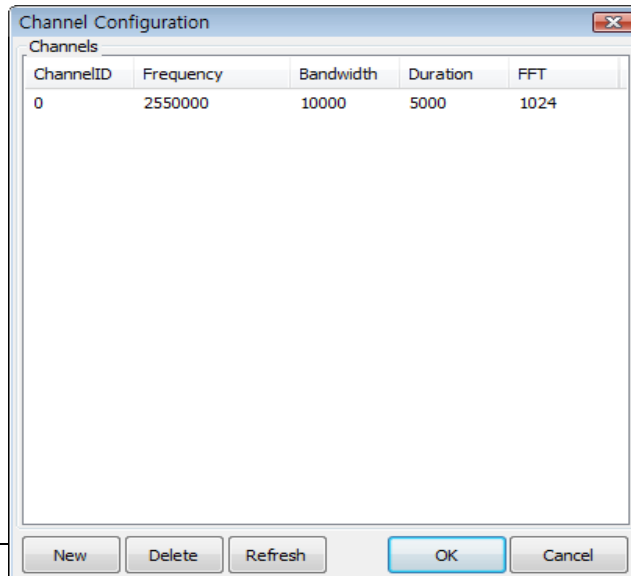


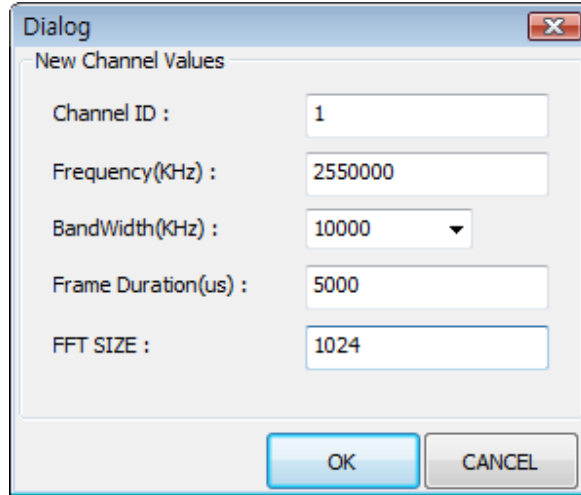
4.2 Channel Configuration

You can change channel configuration. Select "Networks " menu. And then Click "Channels...".

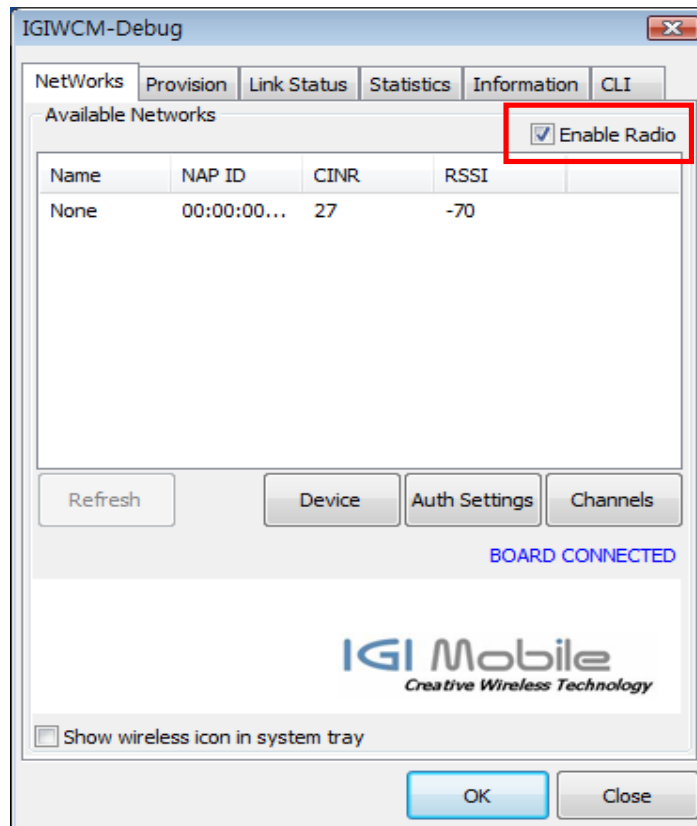


At this dialog box, you can add, remove and change the channels. For example, Click "New" button, and then you may create below channel values.





After setting channel values, if MS found WIMAX networks, you can see the BS information at "Networks" menu. If MS does not find WIMAX networks, disable "Enable Radio" and then enable "Enable Radio" again.

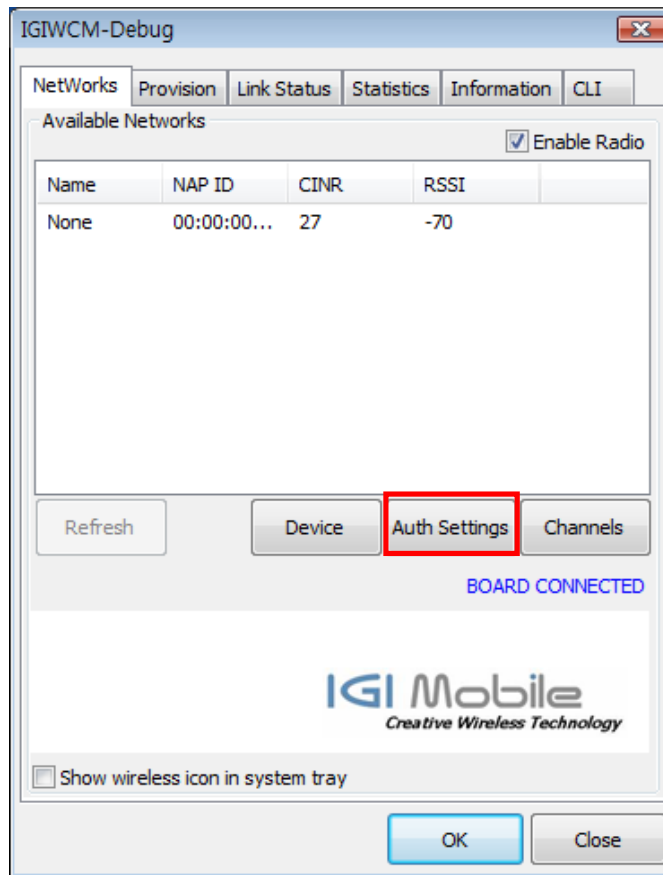


4.3 Authentication Setting

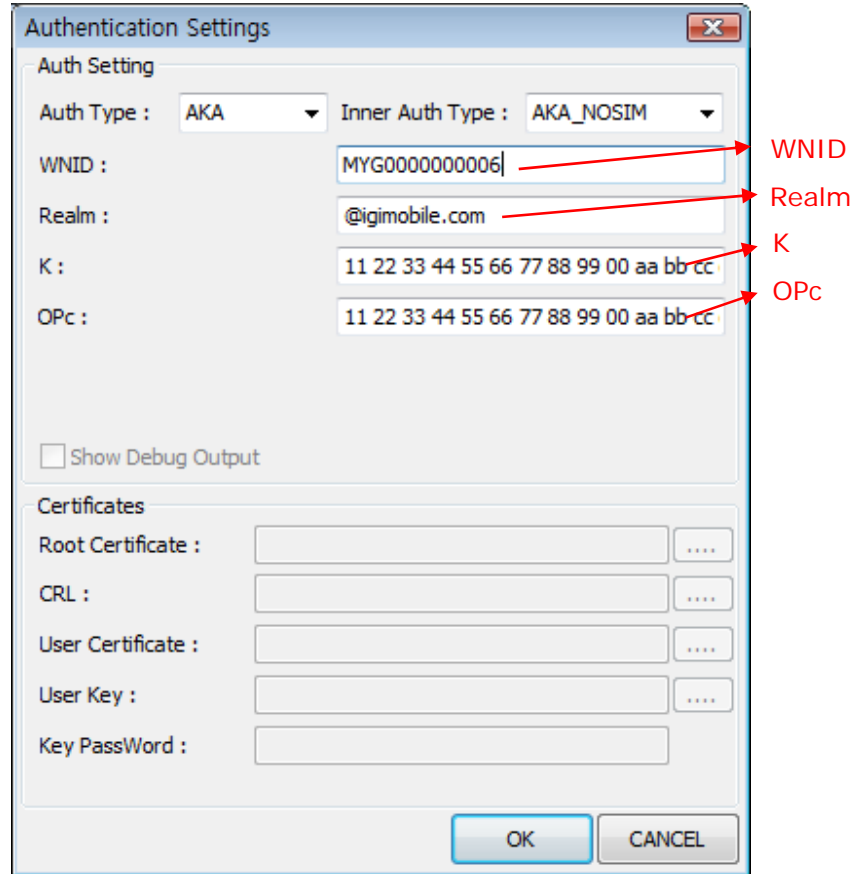
This Connection Manager supply various Authentication Setting function which are supported EAP-TLS, EAP-TTLS and EAP-AKA.

4.3.1 EAP-AKA

Select "Networks" menu.



Click "Auth Settings" button, And then you may set the Authentication values as you need in below Authentication settings dialog box.



For example, if you need EAP-AKA and AKA_NOSIM, you select "AKA" and then "AKA_NOSIM".

And then input the WNID in "WNID:" and REALM in "Realm:" and input K in "K:" and input OPc in "OPc:".

If WNID is "MYG0000000006", input the "MYG0000000006" in "WNID:"

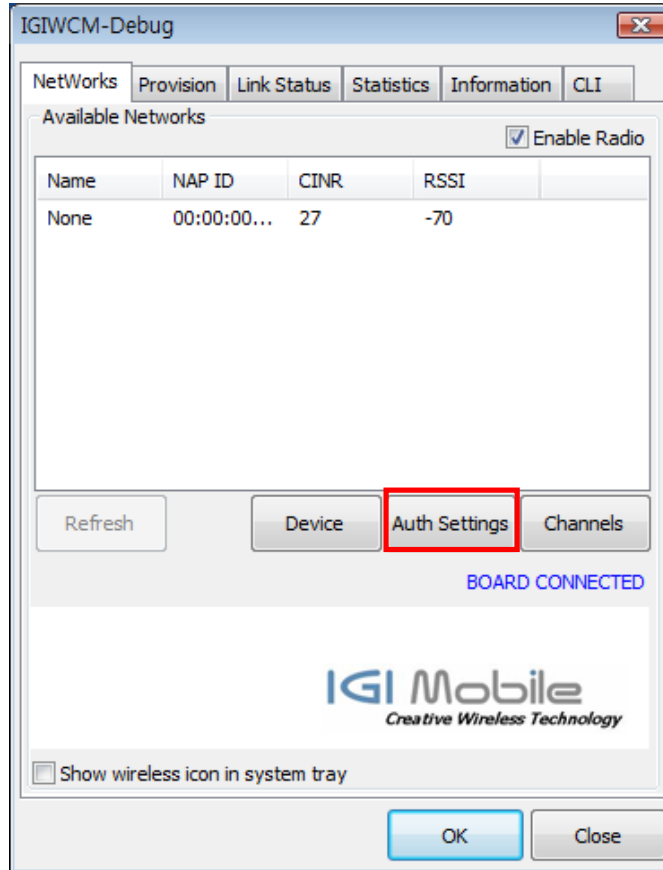
If the Realm is "@igimobile.com" style, input the "@igimobile.com" in "Realm:".

If the K is "11 22 33 44 55 66 77 88 99 00 aa bb cc dd ee ff" style, input the "11 22 33 44 55 66 77 88 99 00 aa bb cc dd ee ff" in "K:". The number is separated by space.

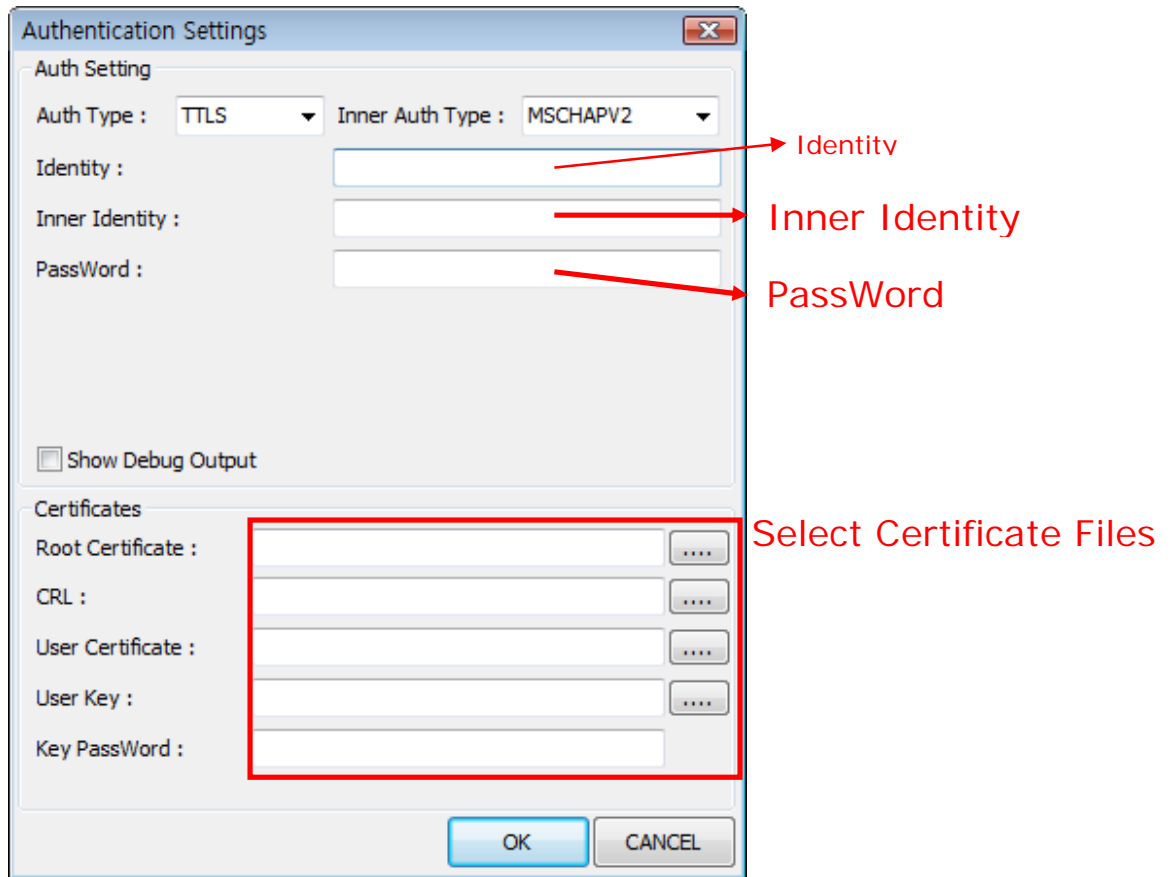
If the OPc is "11 22 33 44 55 66 77 88 99 00 aa bb cc dd ee ff" style, input the "11 22 33 44 55 66 77 88 99 00 aa bb cc dd ee ff" in "OPc:". The number is separated by space.

4.3.2 EAP-TLS , EAP-TTLS

Select "Networks" menu.



Click "Auth Settings" button, And then you may set the Authentication values as you need in below Authentication settings dialog box.



For example, if you need EAP-TTLS and MSCHAPv2, you select "TTLS" and then "MSCHAPV2".

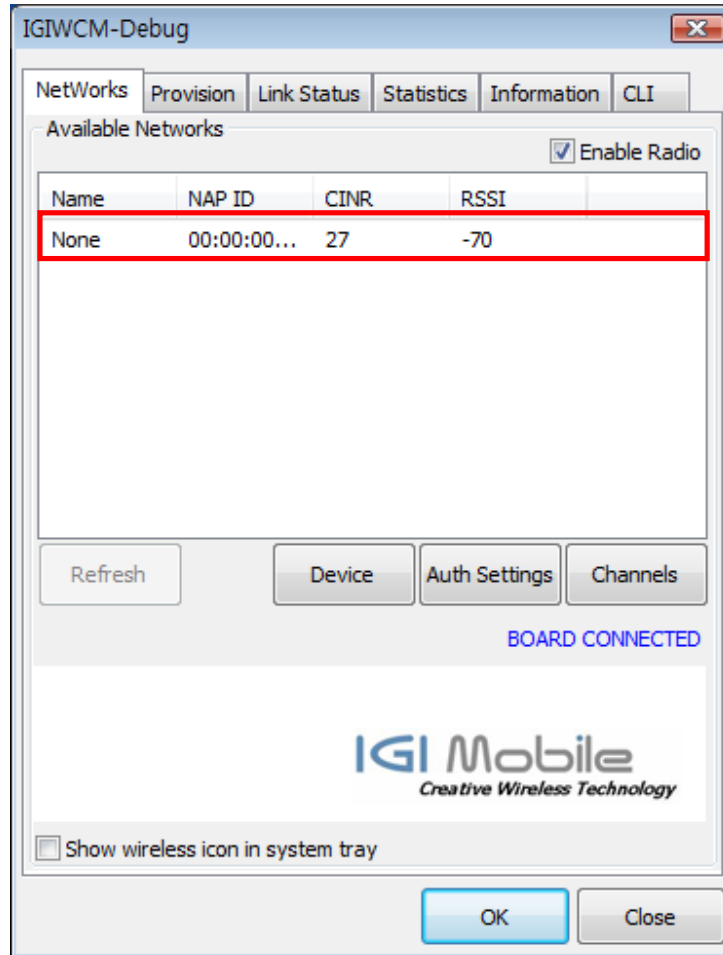
And then input the ID in "Inner Identity:" and the password in "Password:". If ID is "aaaa@xxxx.com" style, input the "aaaa@xxxx.com" in "Inner Identity:"

If the ID is "aaaa" style, input the "aaaa" in "Inner Identity:", you don't need input field in "Identity:". But, enter any string to "Identity:" for test.

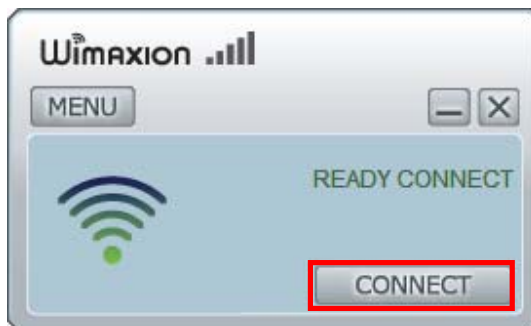
For the "Certificates", you may select certification file in specific directory location.

4.4 Connecting

If all above setting is finished, check if MS searched available networks or not at the Newworks pannel like below. If there is notting to be displayed and If channels setting is correct, then disable "Enalbe Radio" and then enable "Enable Radio" button again.



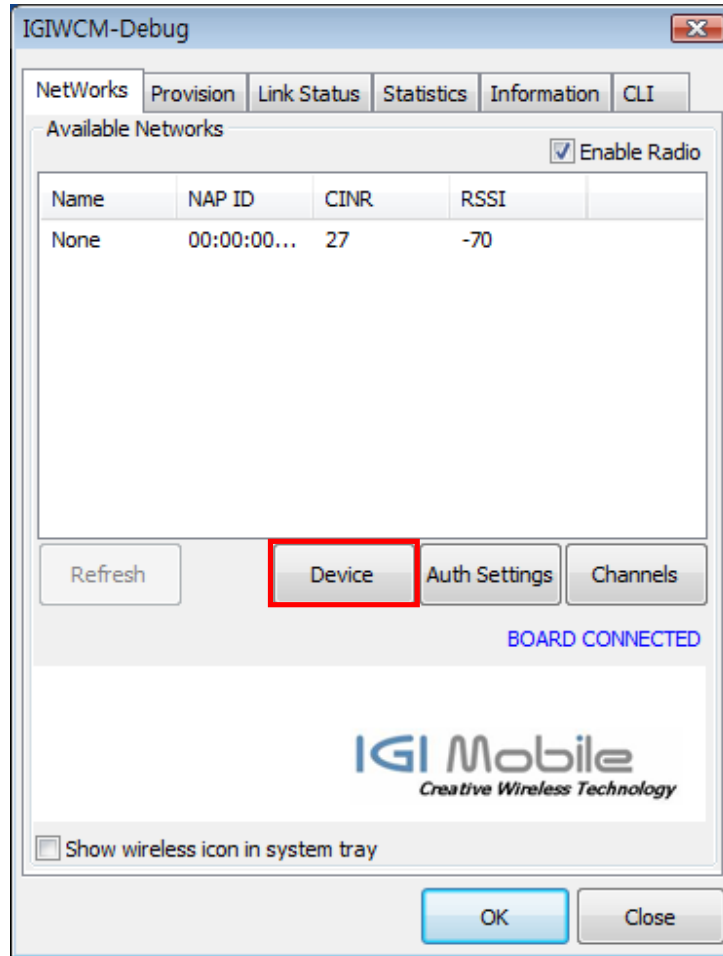
If there is available networks, then click "CONNECT" button at UI for normal users.



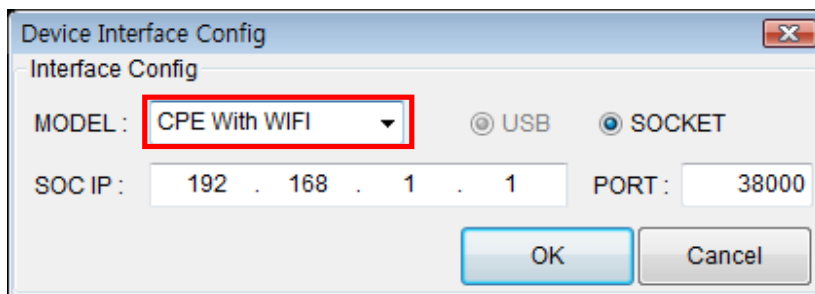
4.5 Device Change

IGIWIMAXCM is made for various type of our products. It can connect SIMPLE CPE, CPE with WIFI and USB Modem.

If you want to user other types of product, you can change devcie type by clicking "Device" like below.



Just click MODEL and change Model. All other configuration will be changed automatically. After changing MODEL types, Restart CM. Then it will find device and connect if available.



5 Internet Test

5.1 Internet Explorer

Start Internet Explorer on your PC and then use internet.

