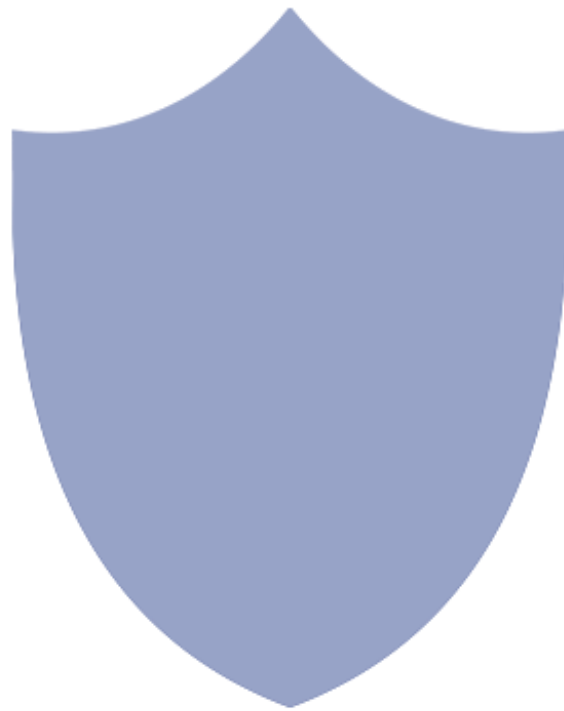


HD 1080P Weather Station Security Wi-Fi Camera


User Manual

Version:Mar,2016



Quick guide of Wi-Fi camera function:

1.Plug in power → Turn on indoor unit's switch, wait for 2 minutes(Blue light always on, red light blink slowly);

2.Enter smartphone setting → Search and connect device's wifi named: YM.....,wait till phone status bar appear Wi-Fi  symbol;

3.Enter APP, press top right “+” icon → Add new online camera → Search(LAN) → Select camera → Press Ok → Camera Online then;

TIPS: 1.Please select **【Change】** to change device password for security **【default: 8888】** ;

2.This step = P2P mode, can check video locally when without Wi-Fi.

4. Press gear icon after camera → Device Settings → WiFi Config → Select your Wi-Fi → Input password → Press Ok;

5.Quit APP , wait 30 seconds (device restart automatically)and connected with your set Wi-Fi (back red light always on);

6.Enter APP to check live video locally or remotely anywhere.

P.S.: Contact local dealer for video guide setting up.



Indoor unit



Outdoor unit

Overview

The HD 1080P Weather Station Security Wi-Fi Camera is a multifunctional fashionable weather station with an integrated 1080P high-definition hidden Wi-Fi camera.

First, it can be used as a normal weather station to detect and show both outside and inside temperature and humidity, and display time/date/moon phase;

Second, the device can be easily connected to Wi-Fi and watch live video, or remotely take photo and video by APP in smartphone anywhere in the world; Also, it supports Point to Point (P2P) function, connected by APP to smartphone for local live video without Wi-Fi.

Third, the item also support motion detect alarm function, cycle recording and work when charging.

Usages: Nanny camera, Home/ Shop/ Office/ Warehouse surveillance camera.....

In the box



a Indoor unit



an Outdoor unit



a Back cover



an AC power adapter



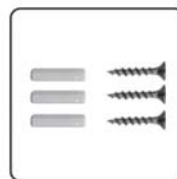
a USB cable



a CD driver

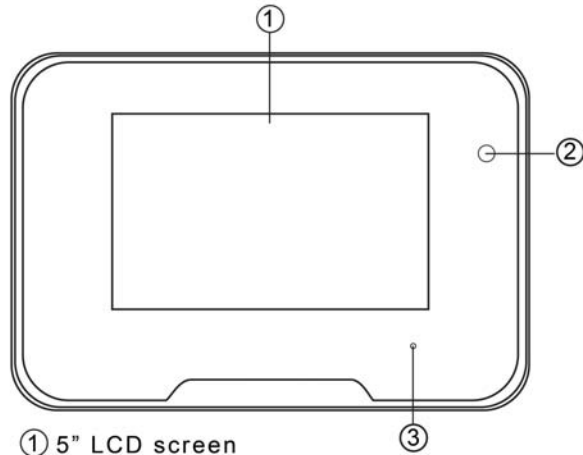


a User manual

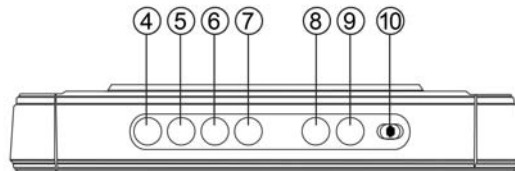


Three screws

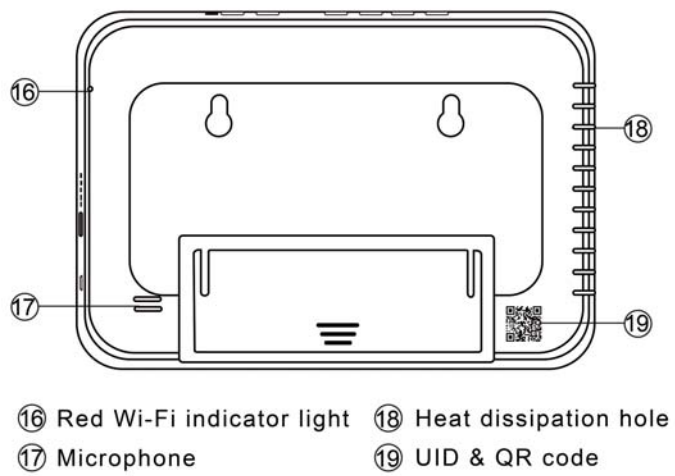
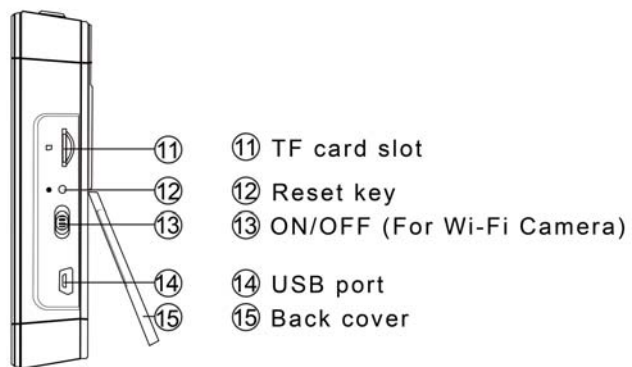
Product instruction

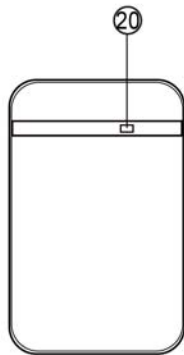


- ① 5" LCD screen
- ② Camera
- ③ Blue indicator light

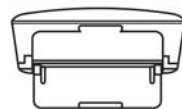
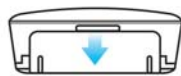
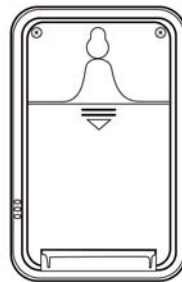


- ④ Time
- ⑤ Alarm
- ⑥ Up
- ⑦ Down
- ⑧ Max / Min
- ⑨ Alert
- ⑩ OFF/ON (For backlight)





20 Indicator light



Getting Started of Weather station part

Open back cover, remove the protective seal from the battery and plug it into AC power using the included adapter; LCD screen will be lighted on.

Insert 2pcs*AAA batteries for outdoor unit, it will be powered on automatically and send out current actual weather info in 1 minute. Indoor unit will get and show this info on the indoor unit LCD screen.

TIPS: 1. Outdoor unit is NOT water or weather proof;

2. Please power on outdoor unit in 3 minutes after indoor unit turned on;
Or, indoor unit need to be totally restarted (plug off power and take out battery) for setting the connection of both units.

3. Transmit distance between outdoor and indoor unit is about 40-50 meters when not any blocks.

TIME: Long press to set time/date

ALM: Long press to set alarm

UP : Up key(Press to change from 12 hour format time to 24 hour)

DN : Down key(Press to change from Centigrade degree to Fahrenheit)

MAX/MIN: Press to show the max or min temperature and humidity of the day

ALERT: Long press to set outdoor max/min temperature alarm

ON/OFF: Turn on/off the backlight

Getting started of Wi-Fi camera part

Step1: Download and install APP

Scan below QR code or search and download free APP named “Pro iCam” in Apple APP store, Google play or Electronic market, and install it.



[Pro iCam] APP QR code



Step2: Connect power and turn on device

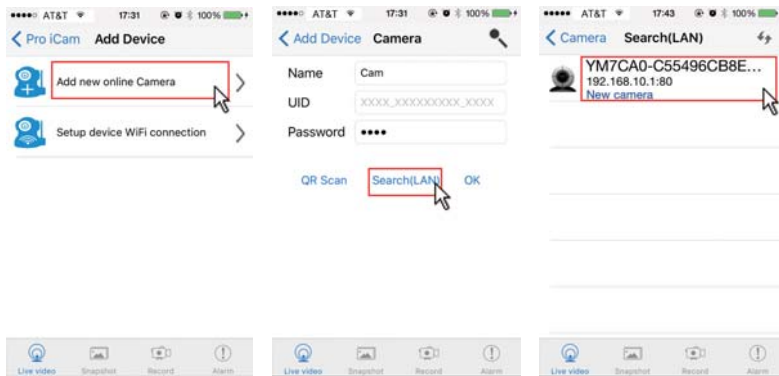
Remove the protective seal from the battery and plug it into AC power using the included adapter; Turn on right side switch, and wait for 2 minutes.
(Blue light always on, red light blink slowly.)

Step 3:Connect WiFi


1. Open smartphone setting, search and connect connect the device's wireless signal named"YM.....", wait Wi-Fi connected, and phone status bar appear Wi-Fi symbol.

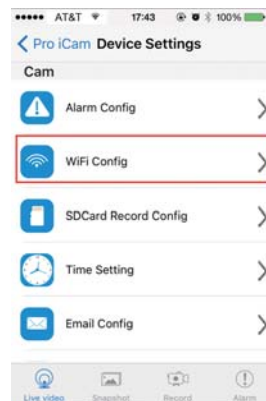
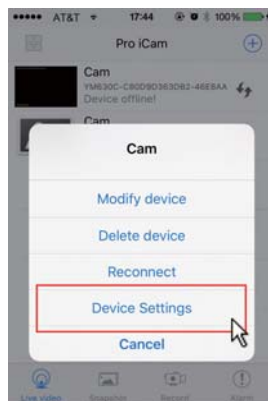


2. Open APP, press symbol + at the top right corner, select "Add new online Camera". Search for new camera and press ok. Then back to the first page to see the live video of camera and do the following setting.



- TIPS:** 1.Please select 【Change】 to change device password for security 【default: 8888】 ;
2.This step = P2P mode, can check video locally when without Wi-Fi.

3. Press the gear icon  after the camera or long press the camera and select Device Settings ,select Wi-Fi Config.




4. Select your Wi-Fi and input passcode, camera will be connected to your Wi-Fi. Your smartphone will disconnect the signal from device and connected to your Wi-Fi.

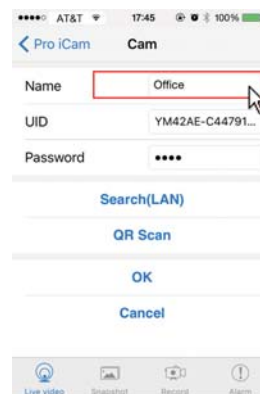
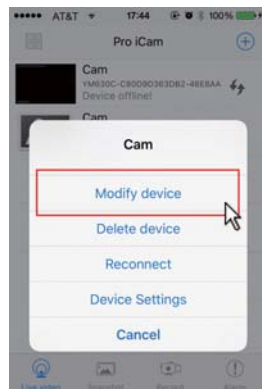
5. Quit APP, and device restart automatically and ready again in 30 seconds.

6. Enter APP and check live video locally or remotely anywhere (back red light always on).

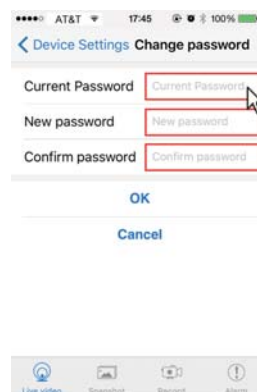


Set camera name and private code

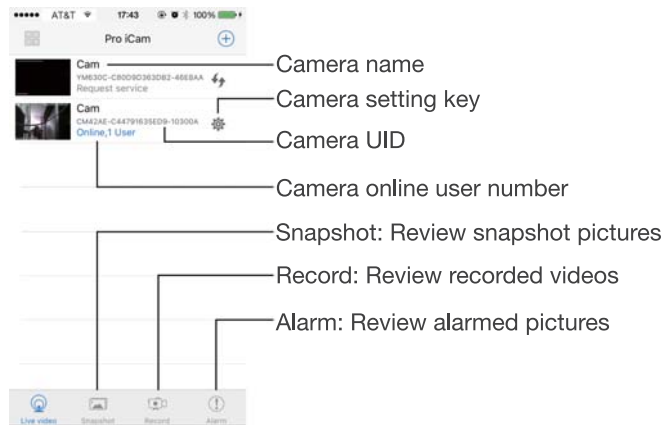
Set name: Press the  after the camera or long press the camera, select Modify device, select Name and insert name like Office, Room.....



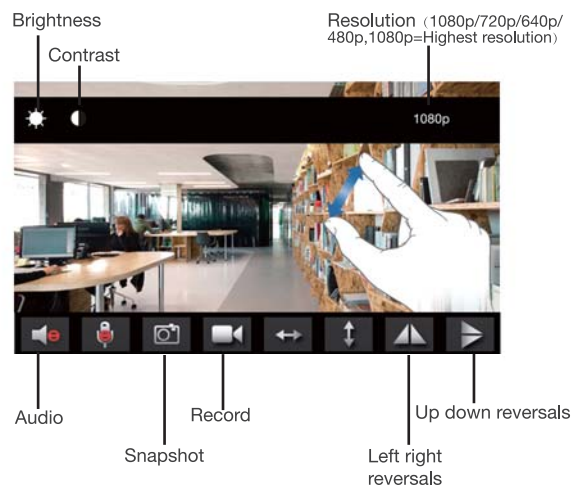
Set code: Long press the camera and select Device Settings ,select Change password. Current one is 8888.

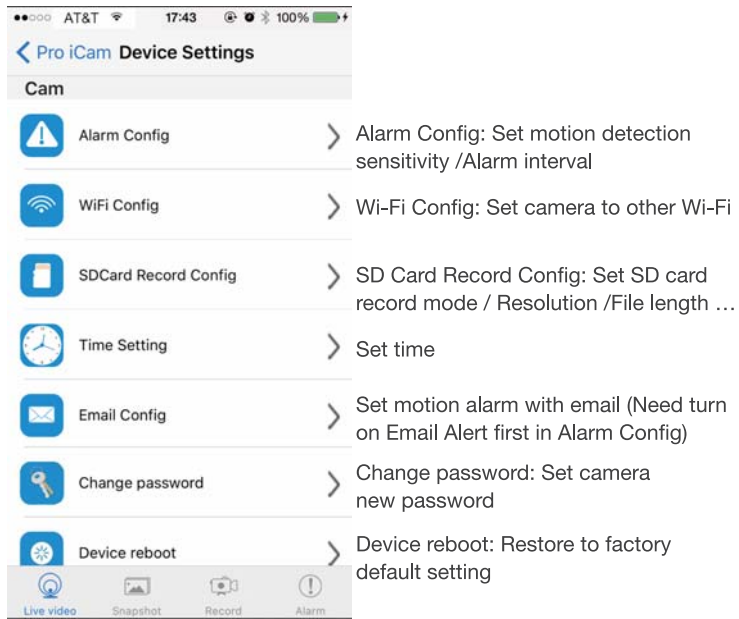


APP introduction:



Live video page - Click camera to check

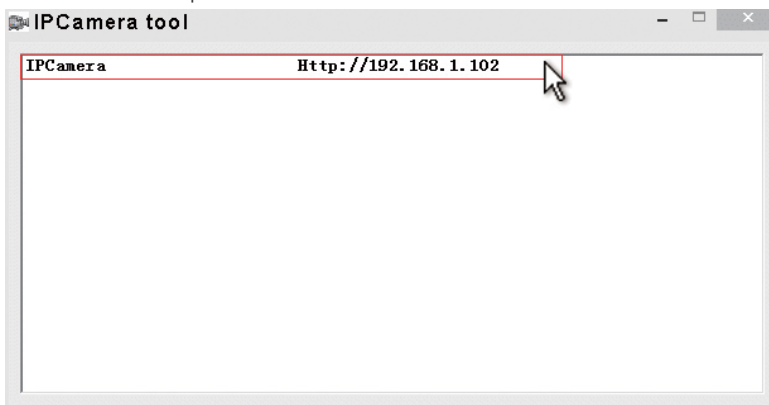




TIPS:Each setting in Device Settings, please scroll down and press ok to save the setting.


Set and watch by PC in LAN

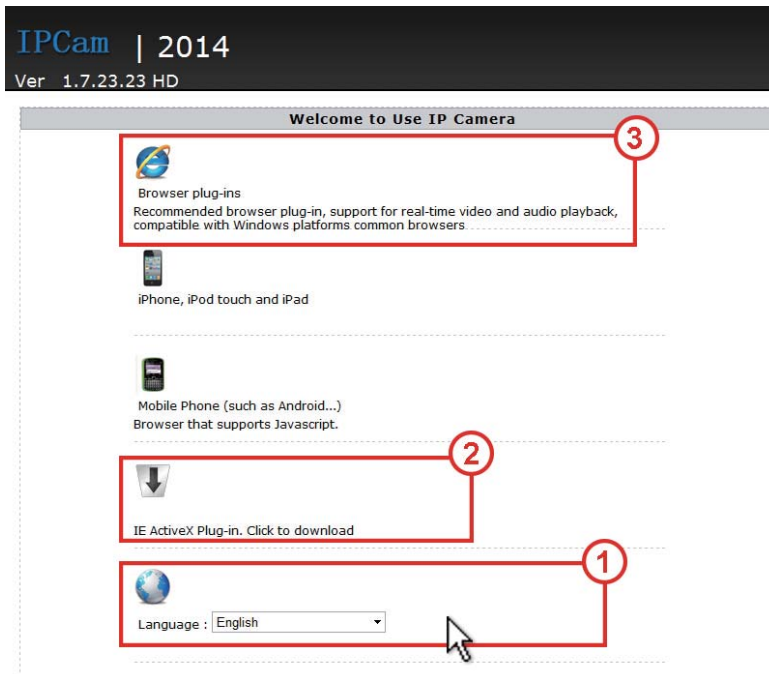
1. Once camera connected well with Wi-Fi, install software "IPCamera" from included CD and open software to find the connected device's IP address.



2. Double click the IP address, insert name "admin" (no password) and press ok.




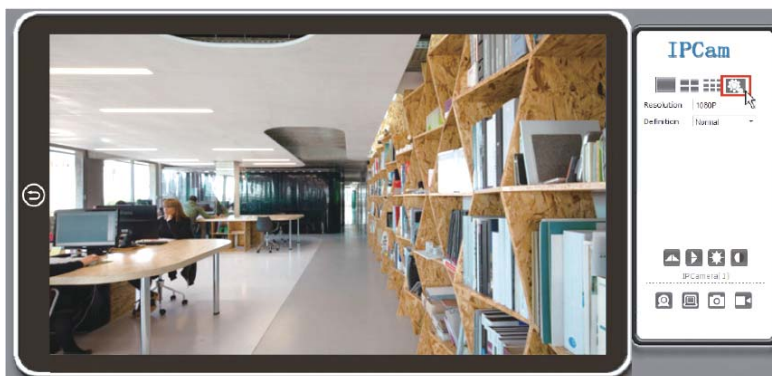
3. After above steps, you can insert setting interface. For first use, please choose language, then click  to download and install plug-in.



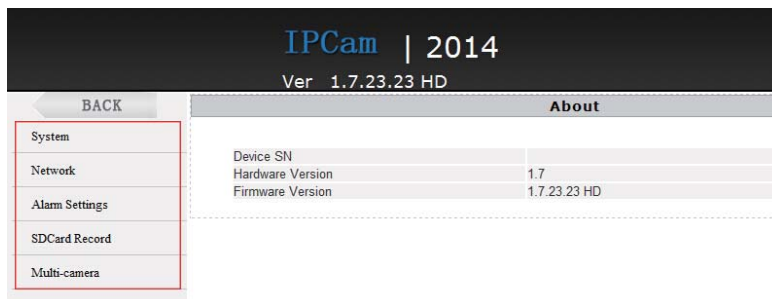
The screenshot shows the 'Welcome to Use IP Camera' settings page. At the top, it says 'IPCam | 2014' and 'Ver 1.7.23.23 HD'. The main content area is titled 'Welcome to Use IP Camera' and contains several sections:

- Section 3:** A red box labeled '3' highlights the 'Browser plug-ins' section. It includes a globe icon, the text 'Browser plug-ins', and a paragraph: 'Recommended browser plug-in, support for real-time video and audio playback, compatible with Windows platforms common browsers.' Below this is an icon of an iPhone/iPad and the text 'iPhone, iPod touch and iPad'.
- Section 2:** A red box labeled '2' highlights the 'IE ActiveX Plug-in. Click to download' section. It features a download icon (a downward arrow) and the text 'IE ActiveX Plug-in. Click to download'.
- Section 1:** A red box labeled '1' highlights the language selection section. It shows a globe icon, the text 'Language : English', and a dropdown menu with 'English' selected. A mouse cursor is pointing at the dropdown arrow.

4. Click  to go to the final setting interface.



5. Click left options to set other needed functions.



Set and watch by PC remotely (Not in LAN)



Please check details in included CD for instructions and software.

Specification

Resolution	5 Mega CMOS
Video pixel	Max 1920*1080
Frames	Max 25fps
Compressed format	H.264
View angle	90°
Type of memory card	TF card>=Class 4/10 and HC marked
Maximum capacity of memory card	32GB
PC operation system	Windows 7, 8 / Mac OS X
Play software	VLCPlayer/SMPlayer
Mobile phone operation system	Android/iOS
Web browser	IE7 and above,chrome,firefox
Power consumption	300MA/3.7V
Battery capacity	3000MA
Recording	1 minute/ around 18 MB
Working time	3-4 hours
Charging time	5-6 hours
Power adapter	5V 2A

FAQ


1. Q: Can working when charging for long time use?
A: Yes, please use included 5V 2A adapter to plug in power for long time use.
2. Q: The LCD Screen is dim or not stable, always shinning?
A: The unit has low battery, please charge it.

3. Q: Can't get device Wi-Fi signal? (Five solutions FYI).
A: 1). Please confirm the power adaptor connected;
2). Take out battery, then plug in power and wait 2 mins;
3). Press reset key for 5 seconds and wait 2 mins;
4). Turn off camera switch, then turn on again;
5). Turn off smartphone Wi-Fi for a while, then turn on to search again.
4. Q: Can't add or set camera after connected with camera Wi-Fi?
A: Please wait phone status bar appear Wi-Fi  symbol, then to do follow settings.
5. Q: Why live video screen shows up black and a searching circle spins in center but nothing ever displays?
A: 1). If camera's connected Wi-Fi speed is slow, please wait 10-30 seconds for live video appear;
2). One click middle of screen, select top right 480p resolution to check.
TIPS: If local Wi-Fi speed is slow, please choose lower resolution for good video and audio.
6. Q: Live video not smooth and clear?
A: Select suitable resolution according to the real time network environment.
7. Q: How many cameras can be added to APP?
A: No limit.
8. Q: How many visitors support to check live video?
A: 1-2
9. Q: Only 1 user, but show 2 or more users?
A: 1). If login in very often, last record is still in. If check every 2-5 mins, surely will be the exact numbers of users;
2). To be safer , please change camera's password when first use (Page 9).
10. Q: Motion detect set and alarm?
A: 1). Set motion detect sensitivity in Device Settings - Alarm Config, and scroll down press OK;
2). When motion detected, camera will push a alarm message to your phone and take 3 pictures for checking in the APP
[Page 10 - Alarm - ].

11. Q: Micro SD card instruction?

- A: 1). Format card before inserting;
2). When backside switch is on, every time you insert micro SD card, it will record automatically;
3). Once connected, can set SD management in app [Device Settings - SD Card Record Config].

12. Q: How to play micro SD card video?

- A:1). Use a card reader to read and play;
2). Use APP to play back [Page 10 - Record - ];
3). Play back in good speed network.

13. Q: After connected to Wi-Fi, how is the status of camera when Wi-Fi off?

- A: 1). If modem off, camera can still check local view as it is connected directly to wireless router;
2). If both modem and router off, camera will keep searching the connected Wi-Fi and connect again;
3). If above point 2, not connect; Just turn off and on backside switch again to connect Wi-Fi.

14. Q: Camera can't hold set Wi-Fi, lost contact and offline?

- A: 1). Make sure camera inside the range of good Wi-Fi signal;
2). Low battery, check if power adapter connected properly for long time use.
3). Make sure your phone network(4G/Wi-Fi)work well in remote area when checking the camera;
4). Please try to add with another phone which with good network.

15. Q: Forget camera password, or item goes abnormal?

- A: Plug in power, turn on camera and wait for 2 minutes, press reset key around 5 seconds till back red light off to restore factory default. Camera restarts and get ready again in 2 minutes.

16. Q: Connect camera with wifi by micro SD card setting?

A: 1). Version need: Above 1.8.13 (Check by PC Page 12)

2). Steps:

a, Create a text file named wifi on the micro SD card

b, Input below format to the file

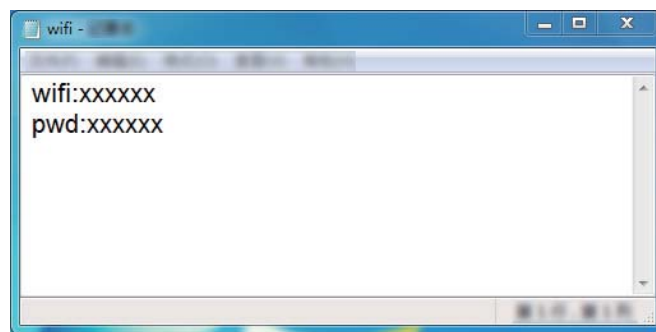
wifi:xxxxxx (Your local wifi name)

pwd:xxxxxx (Both are case-sensitive)

c, Insert the micro SD card when camera is OFF

d, Turn on camera, it will connect with your wifi in 10-15 seconds

TIPS: Can also copy the text file from camera's CD to the micro SD card, change wifi name and password.



17. Q: App content similar but not exact same as in manual?

A: App is always being optimized with better interface and functions.

18. Q: Any operation video demo of the camera for setting up?

A: Please contact local dealer for video guide.

FCC Warning Statement

Changes or modifications not expressly approved by the party responsible for compliance could void the user's authority to operate the equipment. This equipment has been tested and found to comply with the limits for a Class B digital device, pursuant to Part 15 of the FCC Rules. These limits are designed to provide reasonable protection against harmful interference in a residential installation. This equipment generates uses and can radiate radio frequency energy and, if not installed and used in accordance with the instructions, may cause harmful interference to radio communications. However, there is no guarantee that interference will not occur in a particular installation. If this equipment does cause harmful interference to radio or television reception, which can be determined by turning the equipment off and on, the user is encouraged to try to correct the interference by one or more of the following measures:

- - Reorient or relocate the receiving antenna.
- - Increase the separation between the equipment and receiver.
- - Connect the equipment into an outlet on a circuit different from that to which the receiver is connected.
- - Consult the dealer or an experienced radio/TV technician for help.

The End!

