

Appendix 1 – Installation sheet

A.1.1 – 7390DBS

General information: Operator..... Date..... Visa.....

Name Address	Operator
	No Street.....	
	Bld..... Stair..... Floor.....	
	Town	
	Country	
Site identification		
Name of Base Station		
Version		

Equipment characteristics

Designation	Reference	ICS	Serial No.
Subrack			
Fan			
PSU 1			
PSU 2			
CPL			
IBS 1			
IBS 2			
IBS 3			
IBS 4			
IBS 5			
IBS 6			
IBS 7			
IBS 8			

Equipment characteristics and onboard software

Designation	Part number	ICS	Serial No.	Downloaded software
ANT 1				
ANT 2				
TNT 1				
TNT 2				
TNT 3				
TNT 4				
AMD 1				
AMD 2				
AMD 3				
AMD 4				
AMD 5				
AMD 6				
AMD 7				
AMD 8				

A.1.2 – 7390 RBS

General information: Operator..... Date..... Visa.....

Name Address	Operator
	No Street.....	
	Bld..... Stair..... Floor.....	
	Town	
	Country	
Site identification		
Name of Base Station		
Version		

Equipment characteristics

Initial configuration (1+0):

Designation	1	2	3	4
Mains				
Reference				
ICS				
Serial No.				
Tx level				
Band				
Sub-band				
Onboard software version				
Type of cable				
Length of cable				
Tilt				
Azimuth				
Height of RBS				
Type of Mounting				

Redundancy (1+1):

Designation	5	6	7	8
Mains				
Reference				
ICS				
Serial No.				
Tx level				
Band				
Sub-band				
Onboard software version				
Type of cable				
Length of cable				
Tilt				
Azimuth				
Height of RBS				
Type of Mounting				

A.1.3 – Check point list for BS commissioning

CHECKING THE SAFETY REGULATIONS:

- | | | |
|---------------------------|-----------------------------|------------------------------|
| – Equipment ground wire | OK <input type="checkbox"/> | NOK <input type="checkbox"/> |
| – Differential protection | OK <input type="checkbox"/> | NOK <input type="checkbox"/> |
| – Fire protection | OK <input type="checkbox"/> | NOK <input type="checkbox"/> |

CHECKING THE RADIO INSTALLATION:

- | | | |
|---|-----------------------------|------------------------------|
| – No contaminants or possible outflow on the antennas and radio | OK <input type="checkbox"/> | NOK <input type="checkbox"/> |
| – No personnel allowed in the antenna fields | OK <input type="checkbox"/> | NOK <input type="checkbox"/> |
| – Use of torque wrenches for the radio assembly | OK <input type="checkbox"/> | NOK <input type="checkbox"/> |
| – Mast rigidity and absence of vibration | OK <input type="checkbox"/> | NOK <input type="checkbox"/> |
| – Antenna clearance in immediate vicinity | OK <input type="checkbox"/> | NOK <input type="checkbox"/> |
| – Check that the ET390998 coaxial cable is installed | OK <input type="checkbox"/> | NOK <input type="checkbox"/> |
| – Radio grounding | OK <input type="checkbox"/> | NOK <input type="checkbox"/> |

CHECKING THE WIRING BETWEEN RBS AND DBS:

- | | | |
|---|-----------------------------|------------------------------|
| – No crushed cables | OK <input type="checkbox"/> | NOK <input type="checkbox"/> |
| – Observance of the minimum bend radius | OK <input type="checkbox"/> | NOK <input type="checkbox"/> |
| – Quality of cable ground wire installation | OK <input type="checkbox"/> | NOK <input type="checkbox"/> |
| – Sealing of ground relays on the cable | OK <input type="checkbox"/> | NOK <input type="checkbox"/> |

CHECKING THE DBS INSTALLATION:

- | | | |
|---|-----------------------------|------------------------------|
| – Min Max temperature of the premises containing the DBS (-5° to +55°C) | OK <input type="checkbox"/> | NOK <input type="checkbox"/> |
| – Check air inlets and outlets of the DBS backplane | OK <input type="checkbox"/> | NOK <input type="checkbox"/> |
| – Check the 48 Volt polarity | OK <input type="checkbox"/> | NOK <input type="checkbox"/> |
| – Check the ground wire of the DBS backplane | OK <input type="checkbox"/> | NOK <input type="checkbox"/> |
| – Check that all the client access cables are shielded | OK <input type="checkbox"/> | NOK <input type="checkbox"/> |
| – On the DBS panel, J101, J104 and J113 must not be connected | OK <input type="checkbox"/> | NOK <input type="checkbox"/> |
| – Check the optical fiber routing | OK <input type="checkbox"/> | NOK <input type="checkbox"/> |
| – Check the connection sequence of the RBS cables on the panel | OK <input type="checkbox"/> | NOK <input type="checkbox"/> |

PAGE INTENTIONALLY LEFT BLANK

Appendix 2 – Installation of 7390LT software

A.2.1 – Requirements

1. Microsoft Windows NT operating system running (Service Pack 5 or above)
2. A7390 LT installation Kit
3. User account with Administrator privileges to log-on with

Note: Users without Administrator privileges will not be able to install SNTP service, required to run properly the A7390LT.

A.2.2 – Installation Procedure

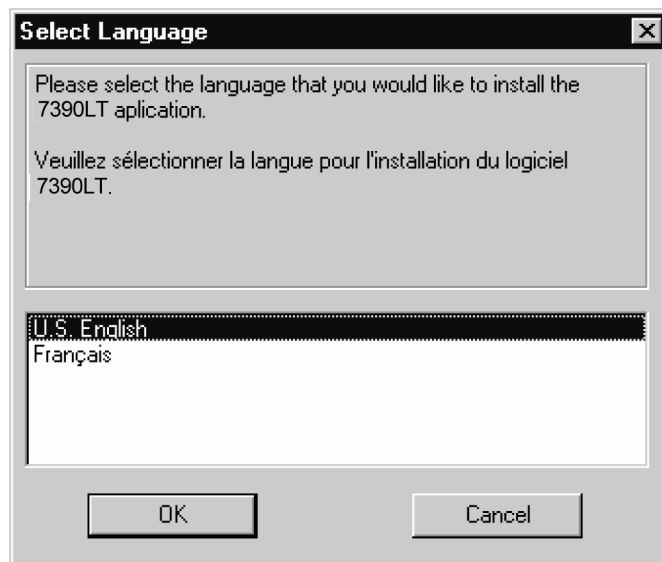
1. Be sure you have administrator rights
2. Close all the applications before start the 7390LT Installation
3. Insert the CD " 7390LT Application Software"
 - The **7390LT Application Software** screen appears



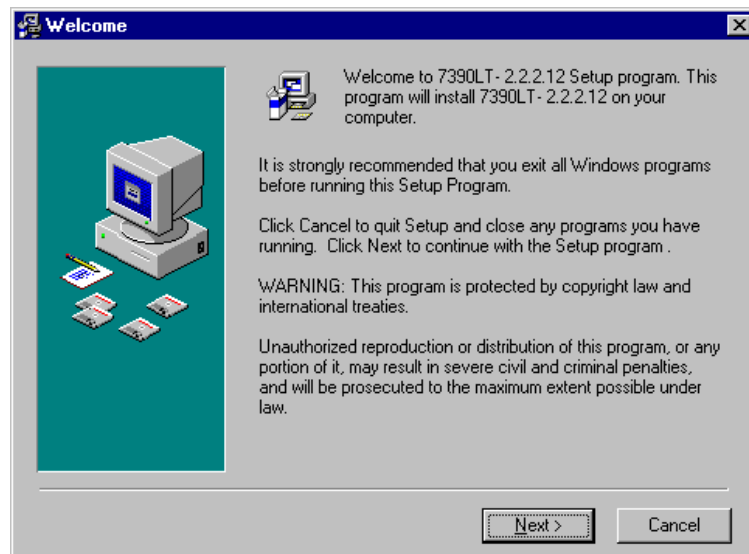
- Click on «*Install Software*»
- The **Install Software** screen appears



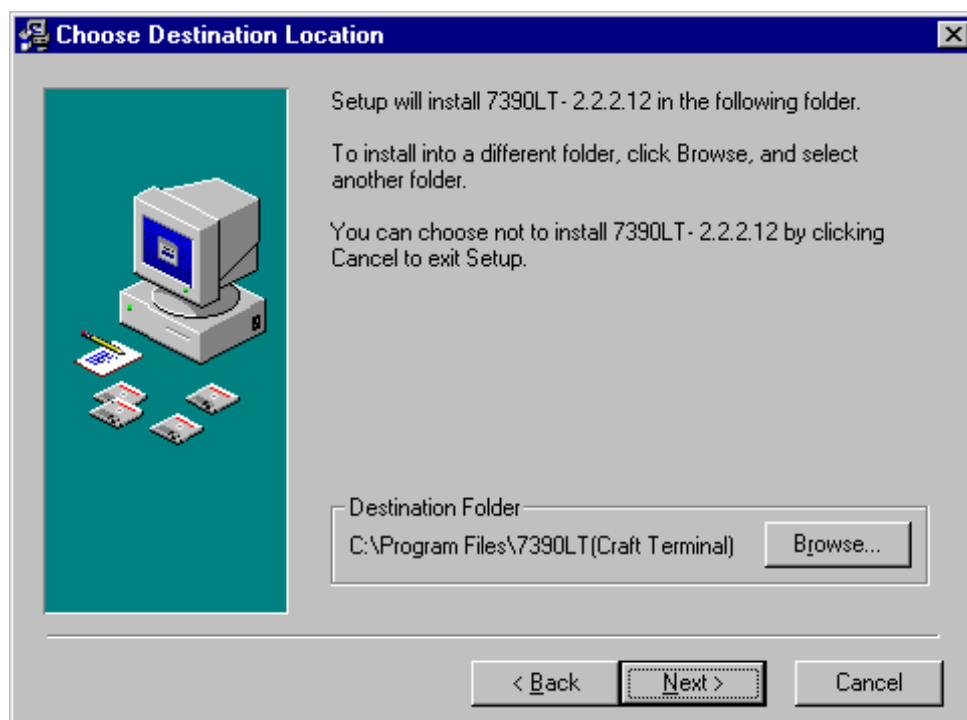
- Click on «7390LT Application Software Release 2.2a»
4. Select the language you prefer for the installation messages and click on the «OK» button.



5. When the **Welcome** screen appears (see below), click on the «Next» button to continue the installation procedure or press «Cancel» to exit the installation program.



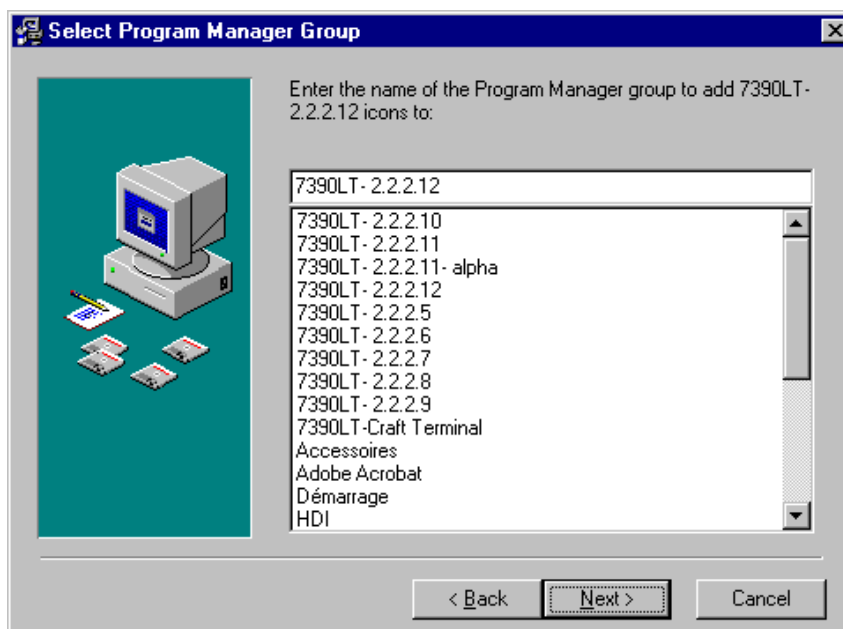
6. The **Choose Destination Location** screen appears (see below). If you agree with the default destination folder, click on the «Next» button. If you disagree, you can change it by clicking on the «Browse» button and selecting the desired destination folder.



Note :

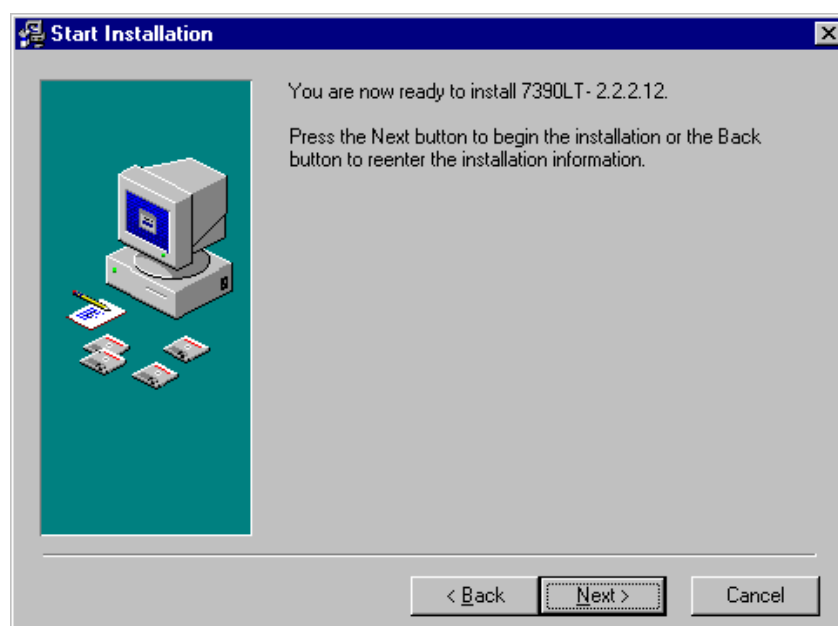
- If you always use the default directory, un-install the previous LT version before.
- If you want to install several LT versions on the same computer, use different folders each time.

7. The **Select Program Manager Group** screen appears (see below). If you agree with the default group name, click on the «Next» button. If you disagree, you can change it by typing the desired name.

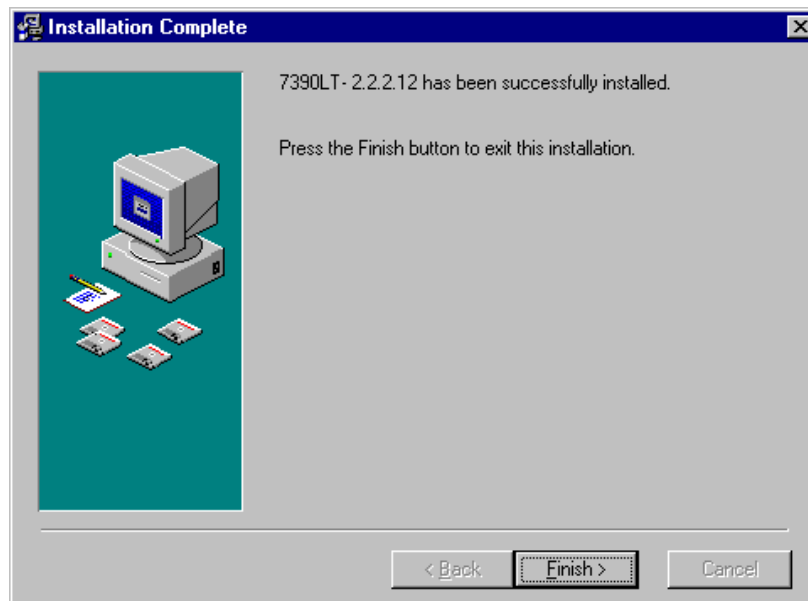


Note: If you want to install several LTs on the same computer use different names for the Program group.

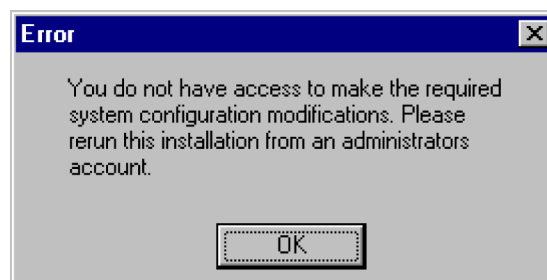
8. The **Start Installation** screen appears (see below). Now, you are ready to install the A7390LT (Craft Terminal) in your computer. Click on the «Next» button to install it. You can cancel the LT installation by clicking on the «Cancel» button or you can change some of the chosen options by clicking on the «Back» button.



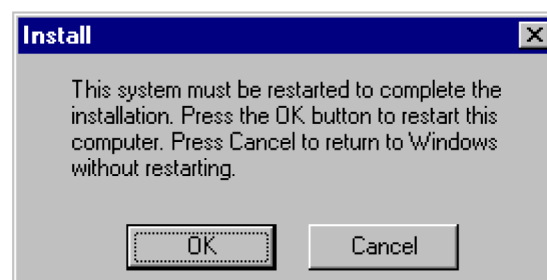
9. The following window appears indicating that the LT installation is complete.



10. If you don't have administrator rights, the following window appears. The LT installation has not been completely succesful, so you have to get administrator rights and start again.



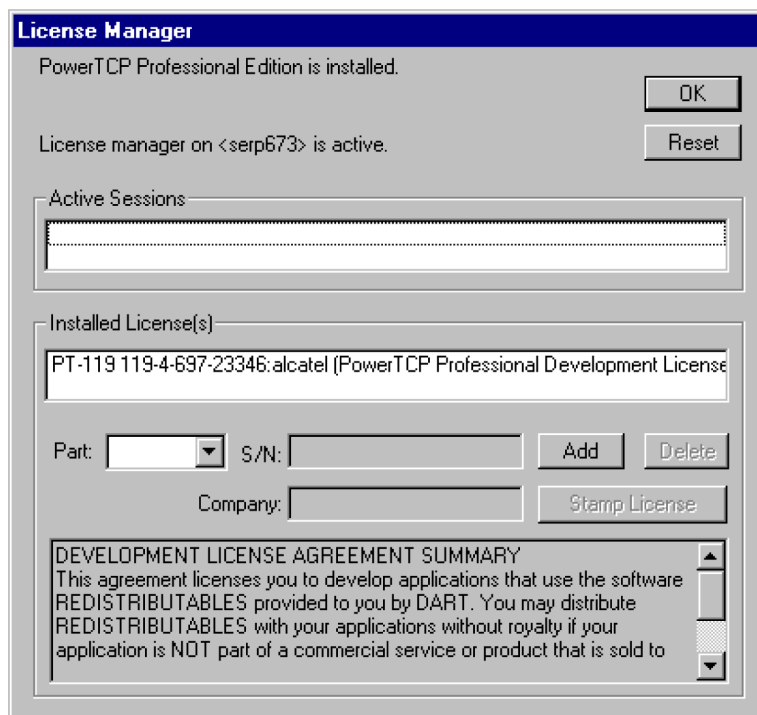
11. The installation has been completed. The following window appears. Press on «OK» to restart your computer.



12. After copying files, the Simple Network Time Protocol (SNTP) service is installed and started. After this, the installation process is complete.
13. Now, you are ready to run the 7390LT application.

A.2.3 – License the .OCX files

1. Run the Ptlc32.exe file located in :
C:\Program_files\7390LT-Craft Terminal\Ptlc32.exe
The **Power TCP** screen appears.
2. Click on the «*Licensing*» button
The following window appears:



3. Enter the following values

Field	Value
Part	PT-119
S/N	119-4-697-23346
Company	Alcatel CIT

4. Click on «*Add*»
The license is printed in the box "Installed License"
5. Click on the license
6. Click on the «*Stamp License*» button
7. Select the following OCX file to stamp the license:
C:\WinNT\System32\ptsnmp32.ocx
A window appears on the screen mentioning that the licensing has been done succesfully.
8. Move back to the main window (see window above), click on the license detailed in the box "Installed License", and then click on the «*Delete*» button.

A.2.4 – Craft.ini configuration

In the Craft.ini file (C: \ProgramFiles\7390LT\Craft.ini) enter the following values :

Parameter	Value
IP Address	BS IP address
Local Port	161 (port from where SNMP instructions are sent from the 7390LT)
Remote port	161 (port from where SNMP responses are received on to the 7390LT)
Trap port	161 (port where SNMP Trap messages are received on to the 7390LT)

A.2.5 – Running 7390LT

1. From the "Start menu->programs", click on «*7390LT-Craft terminal*»
2. See the User manual to operate the application.

A.2.6 – NFS Server installation

This step is necessary to implement the 7390LT "Software download" functionality.

If the NFS server installation was done, move on to the next section.

A.2.6.1 – NFS server product references

Reference	Description
Product	Omni-NFS Server for NT/98/95 - Xlink Technology
Version	4.01 / 4.10 / 4.11 / 4.12
Serial Number/Password	Cf. certificate of Authenticity
Documentation	Omni-NFS for Windows 98/95 & NT - User Guide

A.2.6.2 – Installation of NFS server

- Depending of the NFS versions, screens can change from a version to another (following screens are NFS versions 4.01).
- Log on to an account with administrator rights

From the Windows NT Explorer:

- Click on the D: drive
- Double-click on the Setup.exe program

The following window is displayed:



- Click on the menu: "Install Omni Product"

A window requesting the product serial number and a password appears.

- Enter the requested information (see *A.2.6.1 – NFS server product references*) and click OK

A window containing the following phrase appears:

"This program requires a member of Administrator group to setup"

- Click on «YES»

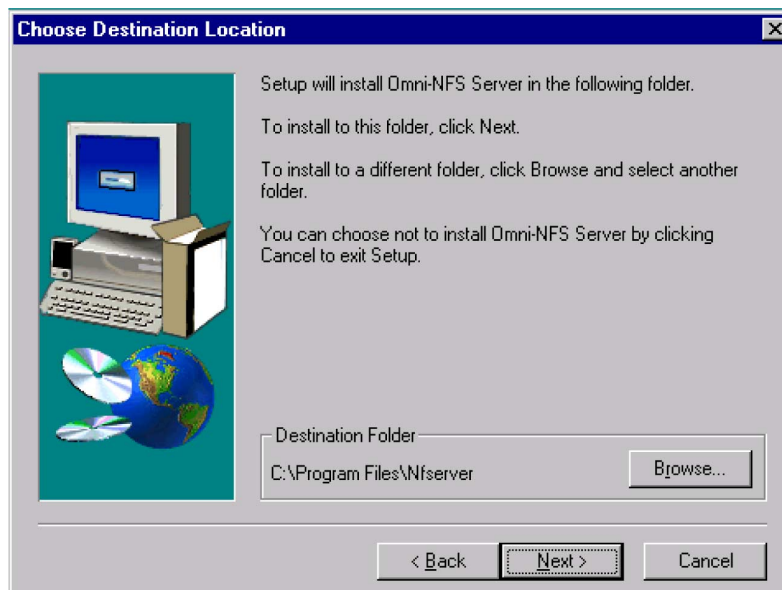
A window entitled **Omni-NFS, full screen** is displayed along with a small **Welcome** window

- Click on «Next»

A window entitled **Software License Agreement** appears

- Click on «YES»

The following window appears:



- Click on «Next»

A window titled "Select Program Folder" appears.

- Click on «Next»

Installation begins.

After about ten seconds, the following window appears:



- Click on «Yes, I want to restart my computer now», then on «Finish»

The PC reboots.

- Log on to an Administrator account before going to stage *A.2.6.3 – Configuring the NFS server.*

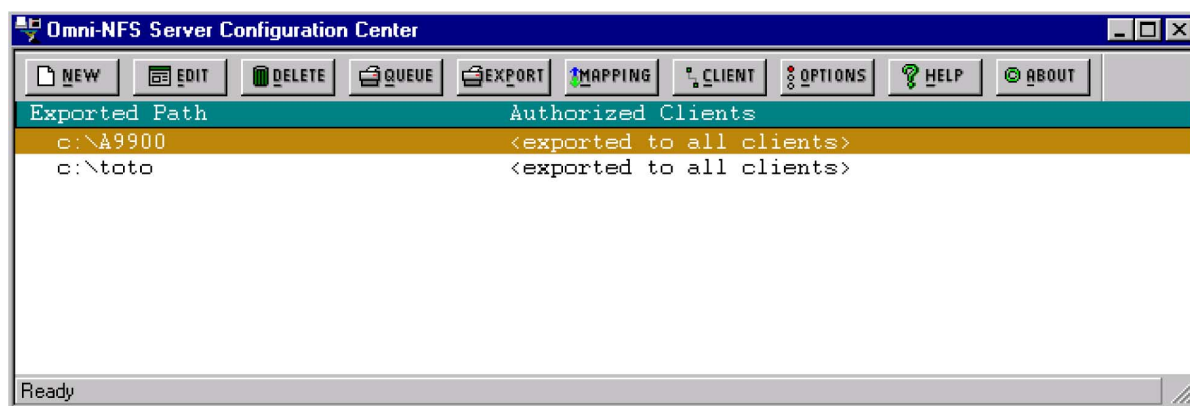
A.2.6.3 – Configuring the NFS server

Note: You must be logged on the PC as a member of the administrator group in order to configure NFS server.

- Run the wnfsd.exe program: C:\Program_files\Infserver\wnfsd.exe

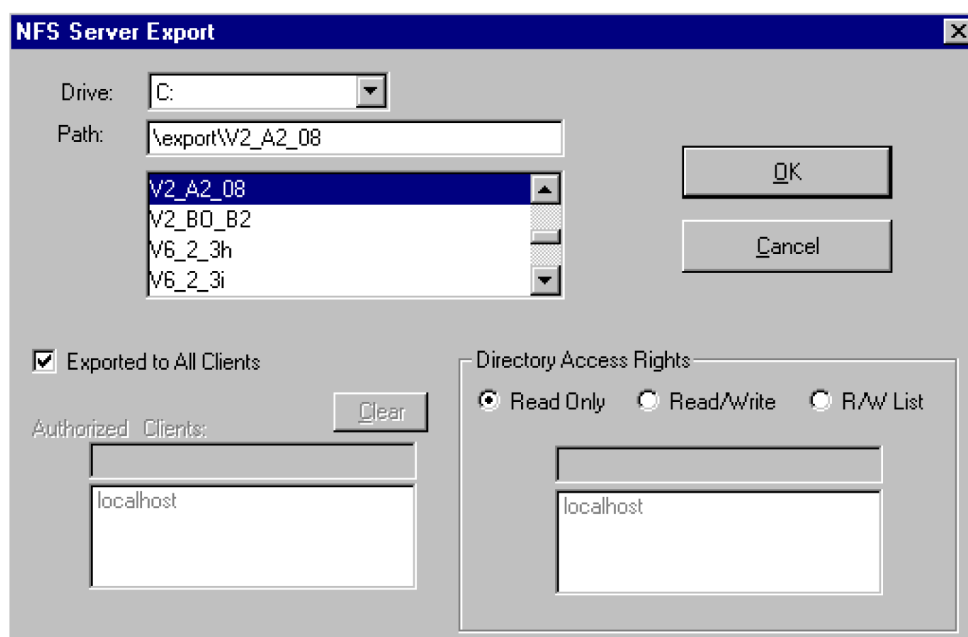
Note: another possible path is: Start - Programs - Omni-NFS Server for Win NT-98-95 - NFS Server Configuration.

A window similar to the following one appears:




- Click on «New» in the tool bar

The following window appears:



For the path, select the directory where the Craft Terminal software packages are to be installed.

	<p>The directory chosen for installation of the software packages must be in CAPITAL LETTERS. The complete path of the directory must be exported. Example: C:\export\V2-A2-08.</p> <p>A nonexistent directory can appear to be exported without any problem but this does not mean that it has been consequently created.</p>
---	--

Choose the following options:

- Exported to All Clients
- Directory Access Rights: **Read only for the software Package directory**
Read / Write for the Backup / Restore directory
Read / Write for the Mib Migration directory (C: \A7390WW)

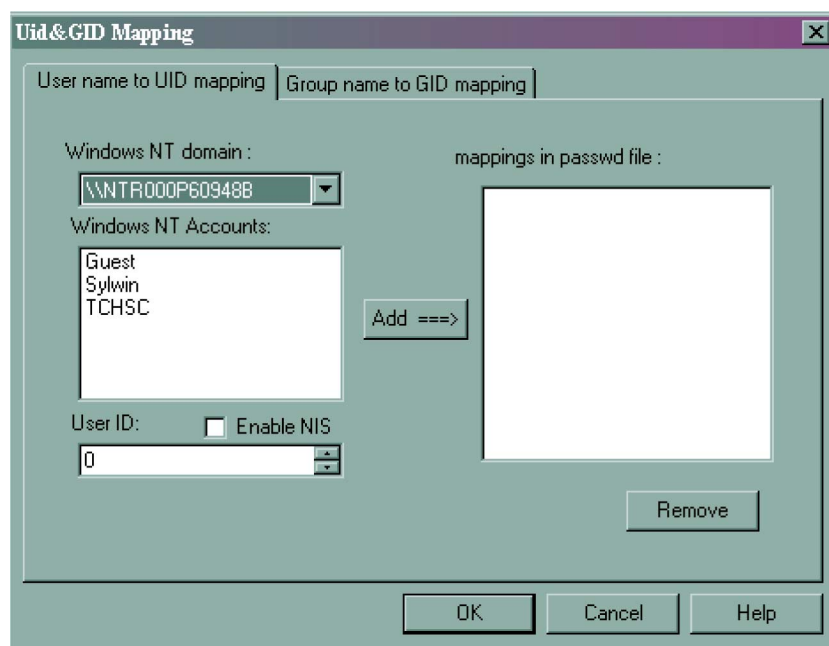
Click on «OK».

Note: In case of access error to a sub-directory of an exported directory, export each of the directories containing a package.

The "MAPPING" step is absolutely mandatory.

Click on the «MAPPING» button

- In the **Windows NT Accounts** screen, select the NT account in which we logged in.
- Enter User ID 851 (because the user ID of the ANT board is 851).
- Click on the «Add==>» button.
- Click on «OK»

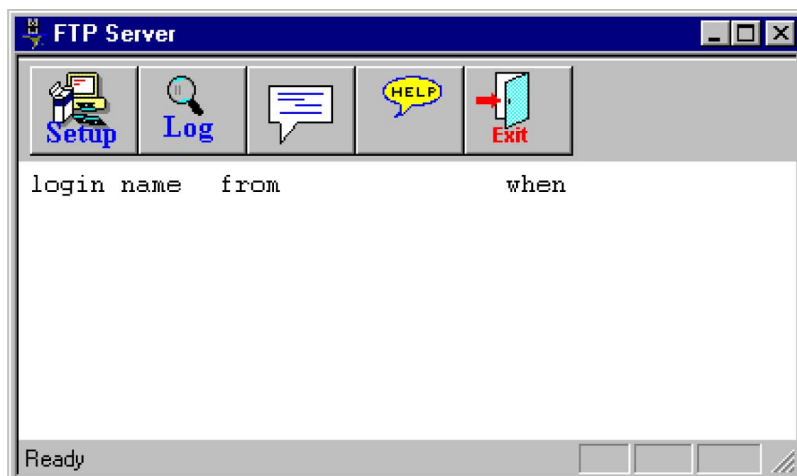


A.2.7 – Installation of Software Packages

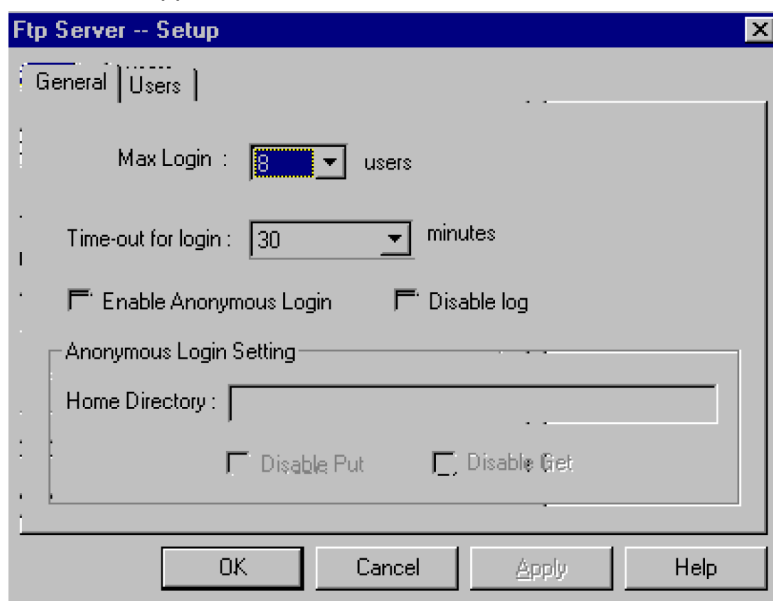
From Windows NT Explorer, copy the directories containing the software packages to be downloaded to the NFS assembly directory and export each of them.

A.2.8 – FTP Server configuration

1. From the "start" menu select "programs->Omni-NFS->FTP Server"
2. The following window will appear. Click on the «Setup» button.

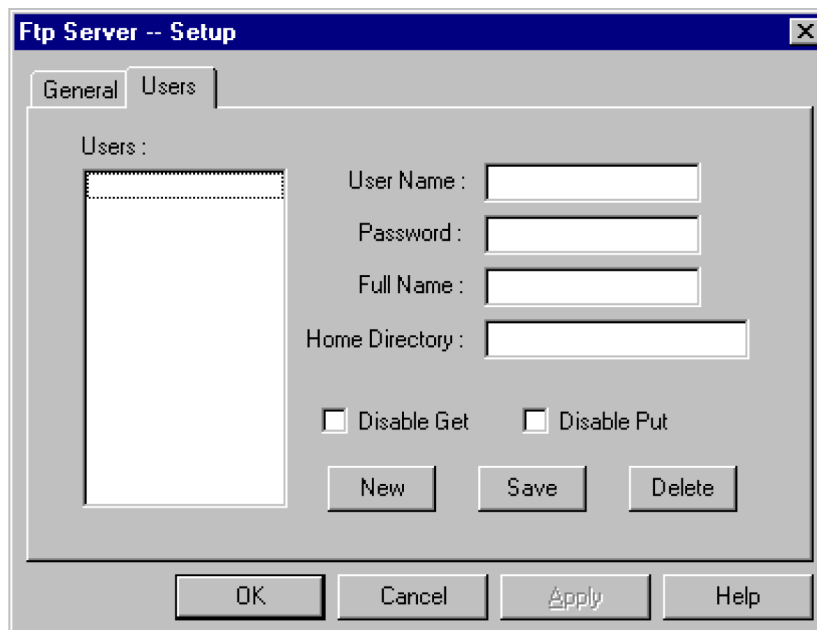


3. The following window will appear. Click on «Users».



4. Fill the window with the values showed in the following table.

Parameter	Value
User Name	ANT7390 (it depends on the FTP client in the agent)
Password	ww7390 (it depends on the FTP client in the agent)
Full Name	
Home directory	../7390LT-craft terminal/FTP Nota: The local folder depends on the destination folder chosen to install the LT software.



A.2.9 – How to remove the 7390LT

From the Windows NT office desk, click successively on the following icons:

- Workstation
- Configuration panel
- Add/Suppress programs
- In the **Add/remove programs properties** screen, select the 7390LT
- Click on «Add/remove»
- Confirm the deletion of the program.

Note: If a message window appears saying that some components were not removed properly from the PC:

- Click on «OK»
- Click on «OK» from the **Add/remove programs properties** screen
- With the Windows NT explorer, remove the following folder :
 ..\7390LT -Craft Terminal

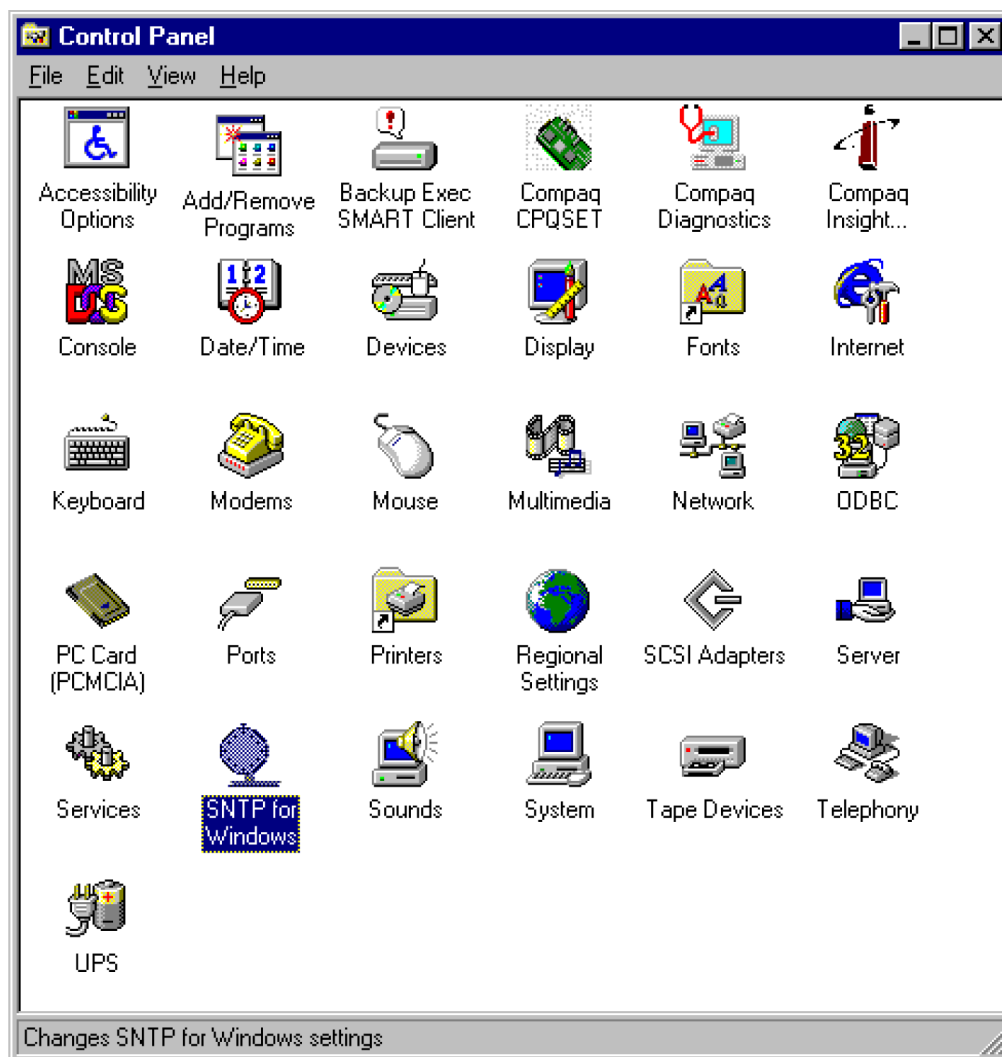
A.2.10 – SNTP Service Control

A.2.10.1 – SNTP Configuration

In order to check the SNTP client configuration, follow the next steps:

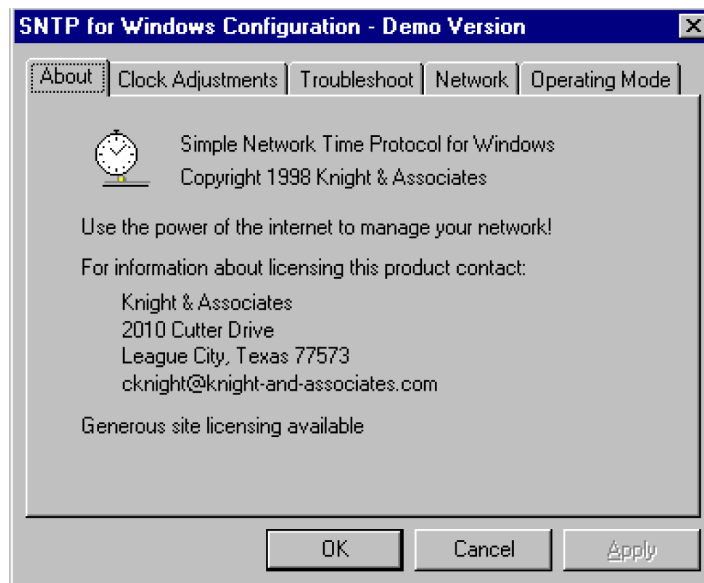
1. From the " Start " menu, click on the «Control Panel» menu.

The following window appears:



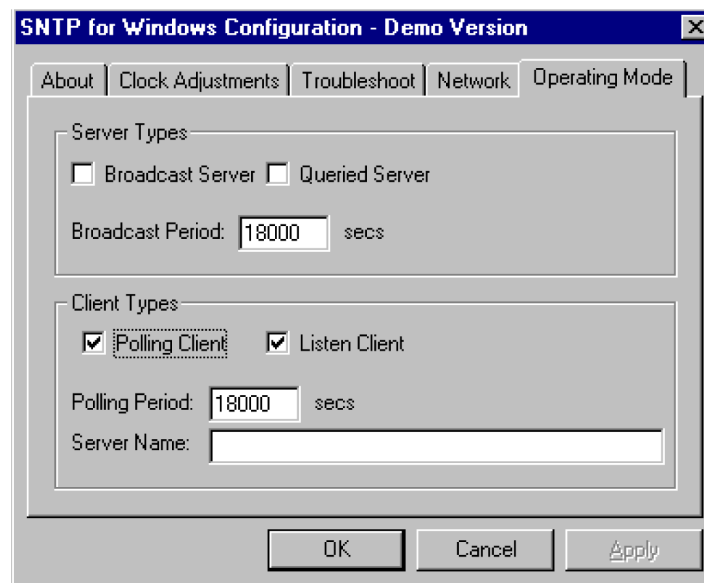
2. Click on the «SNTP for windows" icon:

The following window appears:



3. Click on the «Operating mode» button.

The following window appears.



4. Verify that the window is filled as showing in the previous image.

Note that the "polling period" field has to be the polling period that you have configured from the LT.

5. Click on the «OK» button : the window is then closed.

SNTP SERVICE ACTIVATED

In order to check that the SNTP service is activated, follow the next steps:

1. Select from the "start->configuration Panel->", the **"service"** menu option
2. Look for the "Simple network time protocol" into the service-screen, and check that it is started.

PAGE INTENTIONALLY LEFT BLANK

Appendix 3 – Installation of MIB migration tool

A.3.1 – Requirements

- Microsoft Windows NT operating system running (Service Pack 5 or above),
- MIB migration CD.

If "Python" version 1.5.2 is already installed on your PC, you do not need to re-install it! (go to A.3.2 – *If Python is already installed*).

Otherwise, you need to install "Python" (see A.3.3 – *Python installation procedure*).

A.3.2 – If Python is already installed

If "Python" version 1.5.2 is already installed on your system:

- Insert the CD in the CD driver.
- Copy its contents (the directory "mibconv") on the hard disk of the PC (directly under C:).

Note: By default, the LT will search the MIB migration CD content in the directory "C:\mibconv". If you copy the CD in another directory you'll have to modify the LT configuration file ("craft.ini") (see A.3.4 – *LT configuration file modification*).



IF YOU INSTALL «MIB» MIGRATION TOOL IN ANOTHER DIRECTORY THAN «C:\mibconv», DO NOT USE SPACE CHARACTERS IN THE DIRECTORY NAME

Note: MIB migration CD is copied on the PC where the LT will be launched.

A.3.3 – Python installation procedure

Note: You need a user account with Administrator privileges to log-on with for this procedure.

- Insert the CD " 7390LT Application Software"
- The **7390LT Application Software** screen appears





- Click on «*Install Software*»
- The **7390LT Software** screen appears
- Click on «*MIB Migration tool 2.1 to 2.2a*»
- A window appears, read it carefully and just press a key.
- When the **Welcome!** screen appears, click on the «*Next*» button to continue the installation procedure:



- The **Select Destination Directory** screen appears:



- If you agree with the default destination folder, click on the «Next» button. If you disagree, you can change it by clicking on the «Browse» button and selecting the desired destination folder. In this case, you must modify the LT configuration file ("craft.ini") (see *A.3.4 – LT configuration file modification*).



AT THE EXCEPTION OF DIRECTORY NAME «PROGRAM FILES», OTHER PYTHON INSTALLATION DIRECTORY MUST NOT CONTAIN SPACE CHARACTERS, OTHERWISE MIB MIGRATION WILL FAIL

- The **Select Components** screen appears:



- For the Mib Migration tool, you will deselect all boxes except "Python interpreter and library" (other options are useless).
- Then, click on the «Next» button to continue the installation procedure.
- The **Select Start Menu Group** screen appears:



- If you agree with the default group, click on the «OK» button to continue the installation procedure. If you disagree, you can change it by typing the desired name.
- The **Ready to install** screen appears. Now you are ready to install "Python" in your computer. Click on the «Next» button to install it.
- The **Installing** screen appears (progress bar) and is completed (at the end of the installation, you will click on the «Finish» button).
- If you don't have the administrator rights, an error message will appear.
- If in the previous screen you have selected "Tcl/Tk installation", the **Install Tcl/Tk** screen will appear:



- Select «No» and the installation will finish.
- If you select «Yes», Tcl/Tk will be installed (it's useless but there is no risk for the system) and the **Welcome** screen appears.



- Click on the «Next» button to continue the Tcl/Tk installation procedure.

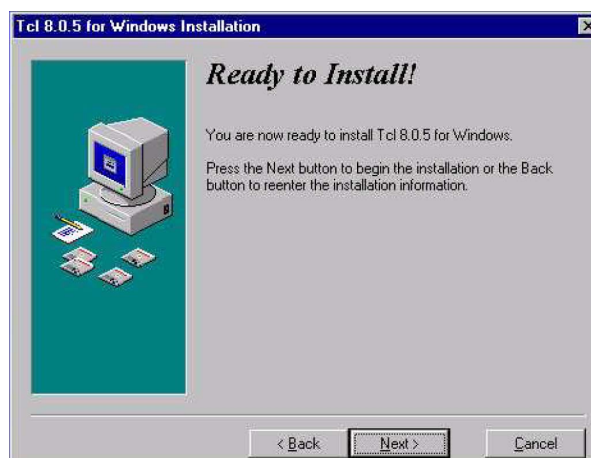
- The **Select Destination Directory** screen appears.



- If you agree with the default destination folder, click on the «Next» button. If you disagree, you can change it by clicking on «Browse» button and selecting the desired destination folder.
- The **Select Installation Type** screen appears.



- Select the default type (Full installation) or select another one (Minimal or customized installation).). Click on the «Next» button to continue.
- The **Ready to Install** screen appears.



- Now you are ready to install "Tcl/Tk" in your computer. Click on the «Next» button to install it .
- The **Installing** screen appears (progress bar).
- The installation has been completed. The **Installation Completed** screen will appear.



- Press «Finish».
- A window appears to show that Tclsh is added in the "Start menu group".



- The installation has been completed. The **Installation Completed!** screen will appear:



- Press «*Finish*».
- Now you are ready to use Python for the MIB migration.

A.3.4 – LT configuration file modification

If the MIB migration CD content has not been copied in the default directory ("C:"), you need to edit the LT configuration file (C:\ProgramFiles\7390LT\Craft.ini) and modify the following parameter:

MIB_MIGRATION_SCRIPT_PATH="C:\mibconv"

If "Python" has not been installed in the default directory, you need to edit the LT configuration file (C:\ProgramFiles\7390LT\Craft.ini) and modify the following parameter:

MIB_MIGRATION_PYTHON_EXE="C:\Program Files\Python\Python.exe"

PAGE INTENTIONALLY LEFT BLANK