

- The "Select Destination Directory" screen appears:



- If you agree with the default destination folder, click on the "Next" button. If you disagree, you can change it by clicking on "Browse" button and selecting the desired destination folder. In this case, you must modify the LT configuration file ("craft.ini") (see [A.3.4 – LT configuration file modification](#)).
- The "Select Components" screen appears:



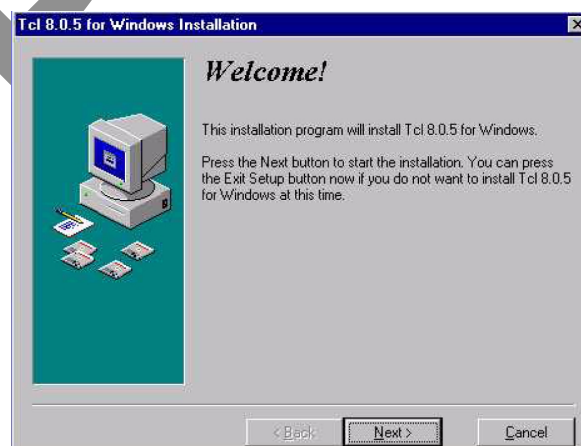
- For the Mib Migration tool, you will deselect all boxes except "Python interpreter and library" (other options are useless).
- Then, click on the "Next" button to continue the installation procedure.
- The "Select Start Menu Group" screen appears:



- If you agree with the default group, click on the "OK" button to continue the installation procedure. If you disagree, you can change it by typing the desired name.
- The "Ready to install" screen appears. Now you are ready to install "Python" in your computer. Click on the "Next" button to install it.
- The "Installing" screen appears (progress bar) and is completed (at the end of the installation, you will click on the finish button).
- If you don't have the administrator rights, an error message will appear.
- If in the previous screen you have selected "Tcl/Tk installation", the "Install Tcl/Tk" screen will appear:



- Select "No" and the installation will finish.
- If you select "yes", Tcl/Tk will be installed (it's useless but there is no risk for the system) and the "Welcome" screen appears.

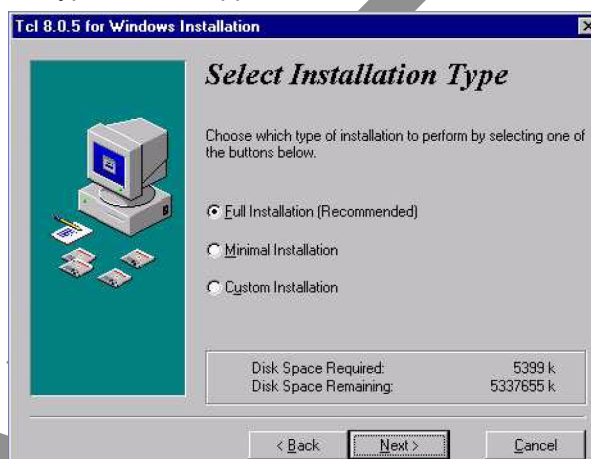


- Click on the "Next" button to continue the Tcl/Tk installation procedure.

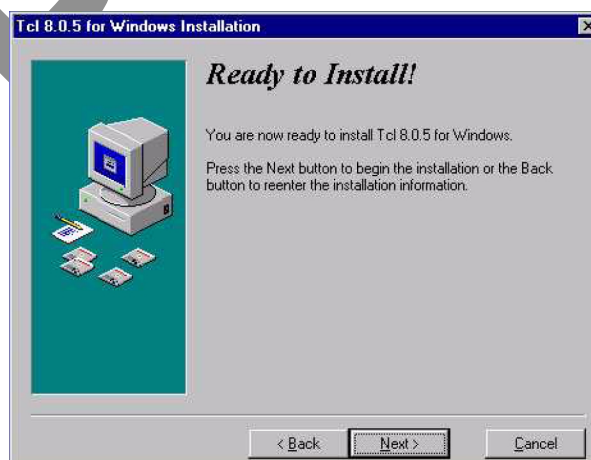
- The "Select destination directory" screen appears.



- If you agree with the default destination folder, click on the "Next" button. If you disagree, you can change it by clicking on "Browse" button and selecting the desired destination folder.
- The "Select installation type" screen appears.



- Select the default type (Full installation) or select another one (Minimal or customized installation).). Click on the "Next" button to continue.
- The "Ready to install" screen appears.



- Now you are ready to install "Tcl/Tk" in your computer. Click on the "Next" button to install it .
- The "Installing" screen appears (progress bar).
- The installation has been completed. The "Installation completed" screen will appears.



- Press "Finish".
- A window appears to show that Tclsh is added in the "Start menu group".



- The installation has been completed. The "Installation Completed!" screen will appear: