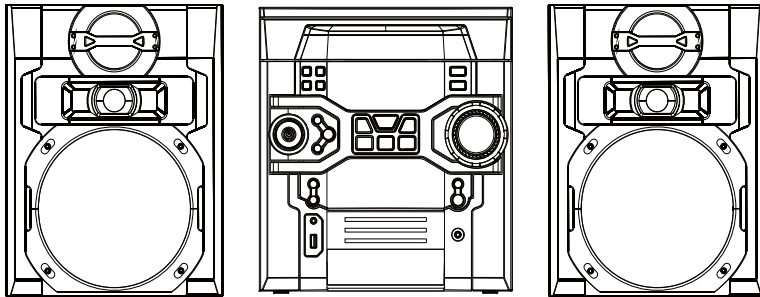




User Manual
Manual del usuario

RS2867B



It's important to read this instruction prior to using your new product for the first time.
Es importante que lea este libro de instrucciones antes de usar su nuevo producto por primera vez.

It's important to read this instruction prior to using your new product for the first time.

Es importante que lea este libro de instrucciones antes de usar su nuevo producto por primera vez.

SAFETY PRECAUTIONS

FCC Information

This device complies with part 15 of the FCC Rules. Operation is subject to the following two conditions: (1) This device may not cause harmful interference, and (2) this device must accept any interference received, including interference that may cause undesired operation.

This equipment has been tested and found to comply with the limits for a Class B digital device, pursuant to part 15 of the FCC Rules. These limits are designed to provide reasonable protection against harmful interference in a residential installation. This equipment generates, uses and can radiate radio frequency energy and, if not installed and used in accordance with the instructions, may cause harmful interference to radio communications. However, there is no guarantee that interference will not occur in a particular installation. If this equipment does cause harmful interference to radio or television reception, which can be determined by turning the equipment off and on, the user is encouraged to try to correct the interference by one or more of the following measures:

- Reorient or relocate the receiving antenna.
- Increase the separation between the equipment and receiver.
- Connect the equipment into an outlet on a circuit different from that to which the receiver is connected.
- Consult the dealer or an experienced radio/TV technician for help.

WARNING: Changes or modifications to this unit not expressly approved by the party responsible for compliance could void the user's authority to operate the equipment.

CAN ICES-3(B) / NMB-3(B)

This device complies with Industry Canada Licence-exempt RSS-210. Operation is subject to the following two conditions: (1) this device may not cause interference, and (2) this device must accept any interference, including interference that may cause undesired operation of the device.



SEE MARKING ON BOTTOM / BACK OF PRODUCT
CAUTION: TO REDUCE THE RISK OF ELECTRIC SHOCK, DO NOT REMOVE COVER (OR BACK). NO USER-SERVICEABLE PARTS INSIDE. REFER SERVICING TO QUALIFIED SERVICE PERSONNEL.



This product contains a low power laser device.

THE LIGHTNING FLASH AND ARROWHEAD WITHIN THE TRIANGLE IS A WARNING SIGN ALERTING YOU OF "DANGEROUS VOLTAGE" INSIDE THE PRODUCT.

THE EXCLAMATION POINT WITHIN THE TRIANGLE IS A WARNING SIGN ALERTING YOU OF IMPORTANT INSTRUCTIONS ACCOMPANYING THE PRODUCT.

Caution:

This product utilizes a laser. Use of controls or adjustments or performance of procedures other than those specified may result in hazardous radiation exposure. Do not open covers and do not repair yourself. Refer servicing to qualified personnel.

WARNING: TO PREVENT FIRE OR ELECTRICAL SHOCK HAZARD, DO NOT EXPOSE THIS PRODUCT TO RAIN OR MOISTURE.

CAUTION: USE OF CONTROLS OR ADJUSTMENTS OR PERFORMANCE OF PROCEDURES OTHER THAN THOSE SPECIFIED MAY RESULT IN HAZARDOUS RADIATION EXPOSURE.

CAUTION: DANGER OF EXPLOSION IF BATTERY IS INCORRECTLY REPLACED. REPLACE ONLY WITH THE SAME OR EQUIVALENT TYPE.

WARNING: MAINS PLUG IS USED AS DISCONNECT DEVICE AND IT SHOULD REMAIN READILY OPERABLE DURING INTENDED USE. IN ORDER TO DISCONNECT THE MAINS PLUG FROM MAINS COMPLETELY, THE MAINS PLUG SHOULD BE DISCONNECTED FROM THE MAINS SOCKET OUTLET COMPLETELY.

SAFETY PRECAUTIONS

For Your Safety

The AC power plug is polarized (one blade is wider than the other) and only fits into AC power outlets one way. If the plug won't go into the outlet completely, turn the plug over and try to insert it the other way. If it still won't fit, contact a qualified electrician to change the outlet, or use a different one. **Do not attempt to bypass this safety feature.**

CAUTION: TO PREVENT ELECTRIC SHOCK, MATCH WIDE BLADE OF PLUG TO WIDE SLOT, FULLY INSERT.

Technical Information

Product: 5 Disc Audio System

Brand: RCA

Power Supply: 120V ~ 60Hz

Service Information

This product should be serviced only by those specially trained in appropriate servicing techniques. For instructions on how to obtain service, refer to the warranty included in this Guide.

IMPORTANT SAFETY INSTRUCTIONS

PLEASE READ AND SAVE THIS FOR FUTURE REFERENCE

Some of the following information may not apply to your particular product; however, as with any electronic product, precautions should be observed during handling and use.

- Read these instructions.
- Keep these instructions.
- Heed all warnings.
- Follow all instructions.
- Do not use this apparatus near water.
- Clean only with dry cloth.
- Do not block any ventilation openings. Install in accordance with the manufacturer's instructions.
- Do not install near any heat sources such as radiators, heat registers, stoves, or other apparatus (including amplifiers) that produce heat.
- Do not defeat the safety purpose of the polarized or grounding-type plug. A polarized plug has two blades with one wider than the other. A grounding type plug has two blades and a third grounding prong. The wide blade or the third prong is provided for your safety. If the provided plug does not fit into your outlet, consult an electrician for replacement of the obsolete outlet.
- Protect the power cord from being walked on or pinched particularly at plugs, convenience receptacles, and the point where they exit from the apparatus.
- Only use attachments / accessories specified by the manufacturer.
- Use only with the cart, stand, tripod, bracket, or table specified by the manufacturer, or sold with the apparatus. When a cart is used, use caution when moving the cart/apparatus combination to avoid injury from tip-over.
- Unplug this apparatus during lightning storms or when unused for long periods of time.
- Refer all servicing to qualified service personnel. Servicing is required when the apparatus has been damaged in any way, such as power-supply cord or plug is damaged, liquid has been spilled or objects have fallen into the apparatus, the apparatus has been exposed to rain or moisture, does not operate normally, or has been dropped.



Portable Cart
Warning

ADDITIONAL SAFETY INFORMATION

- Apparatus shall not be exposed to dripping or splashing and no objects filled with liquids, such as vases, shall be placed on the apparatus.

IMPORTANT SAFETY INSTRUCTIONS

PLEASE READ AND SAVE THIS FOR FUTURE REFERENCE

- Always leave sufficient space around the product for ventilation. Do not place product in or on a bed, rug, in a bookcase or cabinet that may prevent air flow through vent openings.
- Do not place lighted candles, cigarettes, cigars, etc. on the product.
- Connect power cord only to AC power source as marked on the product.
- Care should be taken so that objects do not fall into the product.
- Do not attempt to disassemble the cabinet. This product does not contain customer serviceable components.
- Main plug is used as disconnect device and it should remain readily operable during intended use. In order to disconnect the apparatus from the mains completely, the mains plug should be disconnected from the mains socket outlet completely.

IF YOUR PRODUCT OPERATES ON BATTERIES, adhere to the following precautions:

- A. Do not mix old and new batteries.
- B. Do not mix alkaline, standard (carbon-zinc), or rechargeable (NiCd, NiMH, etc) batteries.
- C. Any battery may leak electrolyte or explode if disposed of in fire or an attempt is made to charge a battery not intended to be recharged.
- D. Discard leaky batteries immediately. Leaking batteries can cause skin burns or other personal injury. When discarding batteries, be sure to dispose of them in the proper manner, according to your state/provincial and local regulations.
- E. Batteries shall not be exposed to excessive heat such as sunshine, fire or the like.

IMPORTANT INFORMATION

Precautions

- This compact disc player uses a laser to read the music on the disc. The laser mechanism corresponds to the cartridge and stylus of a record player. Although this product incorporates a laser pick-up lens, it is completely safe when operated according to directions.
- Discs rotate at high speed inside the player. Do not use damaged, warped, or cracked discs.
- Do not touch the pick-up lens which is located inside the disc compartment. To keep dust from collecting on the pick-up lens, do not leave the compartment door open for an extended period of time. If the lens becomes dirty, clean it with a soft brush, or use an air blower brush designed for camera lenses.

Headset safety



- Make sure you turn down the volume on the unit before you put on headphones. Increase the volume to the desired level only after headphone are in place.
- Do not play your headset at high volume. Hearing experts warn against extended high-volume play.
- If you experience ringing in your ears, reduce volume or discontinue use.
- You should use with extreme caution or temporarily discontinue use in potentially hazardous situations. Even if your headset is an open-air designed to let you to hear outside sounds, do not turn up the volume so high that you are unable to hear what is around you.
- Excessive sound pressure from earphones and headphone can cause hearing loss.

GETTING STARTED

Unpacking the system

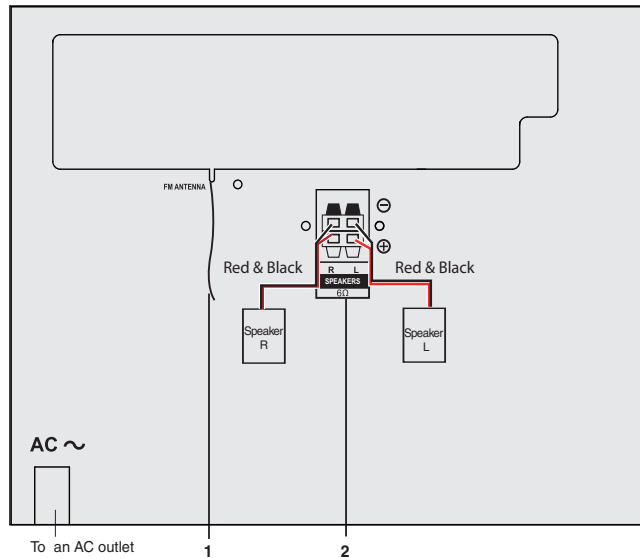
You should have the following:

- one main unit (with two speakers)
- one remote control with 2 AAA batteries
- user manual

Connections

Back view

1. FM pigtail antenna
2. Speaker jacks

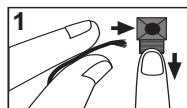


Using FM antenna

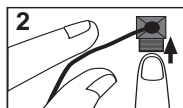
Before you use your audio system, you'll want to make sure both the FM antenna are positioned properly. Uncoil the FM antenna at the back of the unit, making sure it is fully extended (you may even want to tape it to the wall behind the unit if possible, the higher the better).

Connecting Speakers

Each speaker has a black/red wire. the red/black wires connect main speaker to main unit. Match the red wires to the red jacks and the black wires to the black jacks on the main unit.



Push Speaker terminal tab down to insert wire.

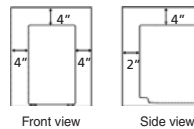


Release tab to lock wire in the terminal.

Note: Make sure the insulation is completely removed from the ends of the speaker wires at all connection points.

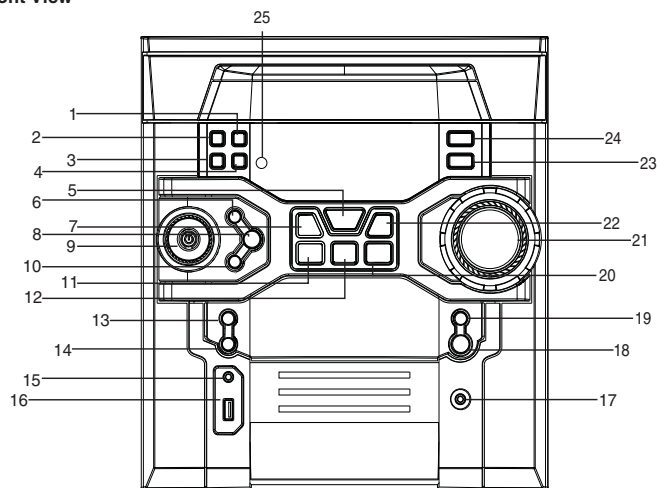
Installation

To ensure sufficient ventilation, keep the spacing shown below free from other surfaces:



UNIT CONTROLS

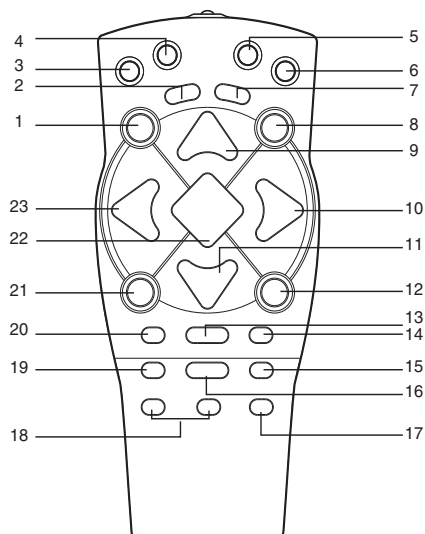
Unit-Front View



- | | |
|--|--|
| <p>1) TIMER
To turn the timer on/off; press and hold to enter the timer setting mode.</p> <p>2) CLOCK
To show time and enter clock setting mode.</p> <p>3) DIMMER
To adjust display brightness.</p> <p>4) SLEEP
To select the time interval in minutes before the unit turns off.</p> <p>5) ▶ II • PAIR
To play or pause CD; to pair the bluetooth®.</p> <p>6) AUTO PROG
To enter auto preset program in FM mode.</p> <p>7,22) ◀◀ / ▶▶
To tune radio frequency; to skip CD track; to fast search through the CD.</p> <p>8) SOURCE
To select among CD, TUNER, BT and LINE IN sources.</p> <p>9) ON/STANDBY
To turn power on or off (STANDBY mode).</p> <p>10) PROGRAM
To enter program mode for CD and tuner.</p> <p>11,20) PRESET ◀ / ▶
To select the previous or next preset stations in tuner mode.</p> | <p>12) ■
To stop CD playback in CD mode.</p> <p>13) PLAY MODE
To cycle between different play modes in CD mode.</p> <p>14) SHUFFLE
To turn on/off random playback in CD mode.</p> <p>15) LINE IN
Ø3.5mm jack for external sound input.</p> <p>16) USB
For charging only.</p> <p>17) 🎧
Jack for connecting headphones.</p> <p>18) BASS
To turn BASS on or off.</p> <p>19) EQ
To select the equalizer presets.</p> <p>21) VOLUME
To increase/decrease the volume.</p> <p>23) DISC SKIP
To skip to the next CD in the tray in CD mode.</p> <p>24) ▲
To open or close the disc tray.</p> <p>25) Remote sensor
To sense the remote control's signals.</p> |
|--|--|

REMOTE CONTROL

Remote Control



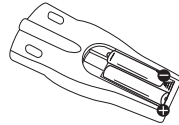
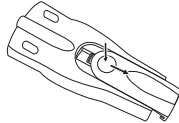
- 1) To turn power on or off (STANDBY mode).
- 2) **INFO**
Press once to display the current time, and press again to exit.
- 3) **CD**
To select the CD player.
- 4) **TUNER**
To select the tuner.
- 5) **BLUETOOTH®**
To select Bluetooth® playback mode.
- 6) **LINE IN /AUX**
To select the external sound input from LINE IN jack.
- 7) **BASS**
To turn BASS on or off.
- 8) **DIMMER**
To adjust display brightness.
- 9) **VOL+**
To increase the volume.
- 10) **NEXT/▶▶**
To tune radio frequency; to skip CD track; to fast search through the CD.
- 11) **VOL-/PAIRING**
To decrease the volume, to pair the bluetooth®.
- 12) **STOP**
To stop playing in CD mode.
- 13) **X**
To mute and restore audio output.
- 14) **SHUFFLE**
To turn on/off random playback in CD mode.
- 15) **INTRO**
To turn INTRO mode on or off to play the first 10 seconds of each track in CD mode.
- 16) **DISC SKIP**
To skip to the next CD in the tray in CD mode.
- 17) **SLEEP**
To select the time interval in minutes before the unit turns off.
- 18) **◀ PRESET ▶**
To select previous/next tuner preset station.
- 19) **FM ST.**
To switch between FM ST ON and ST OFF.
- 20) **PLAY MODE**
To cycle between different play modes in CD mode.
- 21) **OPEN/CLOSE**
To open and close CD disc tray.
- 22) **▶||**
To play and pause the current CD.
- 23) **PREV/◀◀**
To tune radio frequency; to skip CD track; to fast search through the CD.

The remote control must be inserted with 2 "AAA" batteries prior to use.

REMOTE CONTROL

To install batteries

1. Open the battery cover.
2. Insert two AAA batteries.



Make sure to match the + and – on the batteries to the marks inside the battery compartment.

Battery Replacement

When the batteries become weak, the operating distance of the remote control is greatly reduced and you will need to replace them.

CAUTION: Danger of explosion if battery is incorrectly replaced. Replace only with the same or equivalent type.

DISPLAY

Display Brightness

1. Press and hold **DIMMER** for more than 3 seconds.
2. While "DIM" is displayed, press **DIMMER** repeatedly to select the desired level (DIM 1–3).

CLOCK AND TIMER

Setting the Clock

1. Press and hold **CLOCK** until the hour flashes on the display.
2. Press **◀◀ / ▶▶** to set the hour and then press **CLOCK** to shift to minute digits.
3. Press **◀◀ / ▶▶** to set the minute.
4. Press **CLOCK** to save settings.

Note: When system is ON, you can press **CLOCK** to display the current time for about 2 seconds.

Setting the Timer

- For RADIO timer, tune in to a desired station.
 - For CD timer, insert a CD into the unit.
1. Press and hold **TIMER** until ON (timer on time) appears with the hour flashing.
 2. For setting time, press **◀◀ / ▶▶** to set the hour and then press **TIMER** to shift to the minute digits.
 3. Press **◀◀ / ▶▶** to set the minute.
 4. Press **TIMER** to change to OFF (timer off time) with hour flashing. Repeat steps 2 & 3 for timer off time setting.
 5. Press **TIMER** to select the source. Press **◀◀ / ▶▶** to select among TUNER, CD.
 6. Press **TIMER** to set the volume. Adjust the timer volume by **◀◀ / ▶▶** to select the desired volume level.
- Note:** To avoid startling you or other individuals in your home, this product will not turn on at a volume higher than 15.
7. Press **TIMER** to save settings.

Activating the Timer

Press and release **TIMER** to turn on/off the timer.

Sleep Mode

You can select the time interval in minutes before the unit turns off automatically.

1. Press **SLEEP** to select among OFF, 120 MIN, 90 MIN, 60 MIN, 45 MIN, 30 MIN, 15 MIN, 10 MIN and 5 MIN.
2. When sleep is activated, press **SLEEP** once to view remaining sleep time. Press **SLEEP** again when the remaining sleep time is displayed to change the sleep time.

Note: Sleep is automatically deactivated when the unit is turned off.

SOUND FEATURES

Bass Boost

Press **BASS** to turn on/off boosting the bass frequency.

Muting Audio

Press **M/X** on the remote control to cut or restore the sound.

Using Preset Equalizer Curves

Press **EQ** on the unit to select among FLAT, ROCK, POP, JAZZ, CLASSICAL and CUSTOM. The display shows your selection briefly.

Creating a Custom Curve

1. Press **EQ** on the unit to select the CUSTOM mode.
2. While CUSTOM is displayed, press **◀/▶** to cycle among the displayed BASS and TREB range levels.
3. While BASS or TREB is displayed, adjust the volume to set the associated gain between -10 - +10.
4. Press **EQ** to exit.

BLUETOOTH® PAIRING

Before Bluetooth® pairing, you should turn on the Bluetooth® function of your other device (such as, mobile phone with Bluetooth® function) and select RS2867B.

1. Press SOURCE repeatedly on the unit or press the **Ⓜ** on the remote control to select BT (Bluetooth®) mode.
2. The "BT" blinks at slow speed and it auto searches for the last paired Bluetooth® device in memory.
3. Once it enters the pairing status, the "BT" will blink at high speed.
4. Press PAIR on the player for 3 seconds to start pairing.
 - If the Bluetooth® pairing is successful, the "BT" will not blink.
 - If the Bluetooth® pairing is not fixed, the "BT" will blink at slow speed. Please try pairing again.

Note: If your Bluetooth® device (such as, mobile phone) needs the password while pairing, please enter 4-digit number: 0000.

Enjoy the music through Bluetooth®

- Press **▶||** to begin or pause playback.
- Press **◀/▶** to select a specific track.
- Press and hold **◀/▶** to start moving backward/forward at high speed.

Switch the unit to receive another Bluetooth® device

1. Disconnect your Bluetooth® device (such as mobile phone) from the player.
2. Press and hold the PAIR button on the player until the "BT" blinks at high speed.
3. Turn on the Bluetooth® function of your other device (such as, mobile phone with Bluetooth® function) and select RS2867B for Bluetooth® pairing.

CD PLAYBACK

 This unit is compatible with CD-RW/ CD-R discs for playback.



Notes on CD-R/RW Disc:

- Do not affix any type of labels to either side (recordable or labeled side) of a CD-R/RW disc as this may result in the unit malfunctioning.
- To avoid damages to the CD-R/RW disc, do not open the disc compartment door while the disc is being read.
- Do not load an unrecorded CD-R/RW disc into the unit. This may take a longer time to read the disc.
- Playback capability for CD-RW discs may vary due to variations in the quality of the CD-RW disc and the recorder used to create the disc.

Please take care when loading or unloading discs in the disc drawer. Read below for details.

- Remove all discs from the disc drawer before moving or transporting the unit.
- Do not put discs in the trays of the disc drawer when they are still moving.
- Do not push or force the rotation of the disc trays. Always use the **DISC SKIP** button.
- **Do not put discs in any unexposed disc trays.**
- If an error occurs and the disc drawer does not close, empty all disc trays and try again.




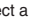
Loading Discs

1. Press **SOURCE** repeatedly to select CD mode.
2. Press **OPEN/CLOSE** or  to open the drawer.
3. Insert up to five discs with label face up. (Press **DISC SKIP** to rotate the disc carrier.)
4. Press **OPEN/CLOSE** or  to close the drawer. Loaded disc position icon lights.

Selecting Discs

Press **DISC SKIP** to skip discs.

Playing Discs

- Press  to begin or pause playback, and  to stop playback.
- Press  /  to select a specific track.

Searching through a CD

Press and hold  /  to search through a CD while it is playing.

Shuffling Play Order

Press **SHUFFLE** to turn on/off the playing of tracks in random order.

Sampling Tracks

Press **INTRO** to play the first 10 seconds of each track on the current disc, all discs in the tray, or turn **INTRO** mode off.

Play Mode

Press **PLAY MODE** to cycle between RPT 1, RPT 1D, RPT ALL DIC, ONE DIC, and ALL DIC.

CD PROGRAM

You can program the CD player to play up to any 20 tracks on the CDs in the tray.

1. While the CD player is stopped, press **PROGRAM** to enter program mode. The system displays the next available program number: "- P 01", prompts you for the first track in the program list.
2. Press **◀▶** to select a track.
3. Immediately press **PROGRAM** to assign the selected track to the program number. You are prompted for the next track in the program list.

Playing a Program List

While in PROGRAM mode, press **▶II**.

Displaying the Program List

1. While the CD player is stopped, press **PROGRAM** to enter PROGRAM mode.
2. Press **PROGRAM** repeatedly to list each track assignment in the program list.

RADIO

Press **SOURCE** or **TUNER** on the remote control to select TUNER.

Tuning to a Station

Press **◀▶** to select frequencies. Press and hold **◀▶** to start auto searching for the next available station.

Preset and Tune Modes

The tuner can be in either TUNER or PRESET mode.

Presetting Stations

Manually setting presets

1. Press **◀▶** to access the desired frequency.
2. Press **PROGRAM** button. The most recently accessed program location will be displayed.
3. If a different program location is preferred, press **◀▶** to select the desired preset number (1-32).
4. Press **PROGRAM** to store the selected frequency at that preset.

Auto Preset Programming (FM only)

Press and hold **AUTO PROG** for 2 seconds to scan stations in the FM band. The stations will then be stored as preset channels. A maximum of 32 stations can be stored.

Beware of your preset channels being erased accidentally because the scanning and storing process is automatic upon pressing and holding the button. You can stop the automatic scan by pressing **TUNE+/TUNE-** button, but the erased stations cannot be recovered.

Using Presets

Press **◀ PRESET ▶** to access the previous or next preset station. The display first shows the preset program number and after a few seconds, the frequency will be displayed. (e.g. P:01 is preset 1)

Suppressing Stereo Signal

Press **FM ST.** to select between ST ON and ST OFF for stereo FM stations.

LINE IN

Play External Sound through the Speaker System

Press **SOURCE** on the unit repeatedly to select LINE IN mode. Or press **LINE IN/AUX** on the remote control to change to LINE IN mode from CD or TUNER mode.

Note:

Suggest using Ø3.5mm LINE IN jack for MP3 player.

TROUBLESHOOTING TIPS

System will not turn on

- Check power cord for a secure connection.
- Unplug the unit for a moment, and then plug into power source again.
- Check the outlet by plugging in another device.

No sound

- Increase the volume setting.
- Check connection to speakers.
- Check that you have selected the appropriate function: CD, TUNER, BT and LINE IN.
- Make sure mute is off.
- Make sure headphones are not plugged in.

Poor radio reception

- Check antenna connection.
- Move antenna.
- Turn off nearby electrical appliances, such as hair dryer, vacuum cleaner, microwave, fluorescent lights.

CD does not play

- Check that CD is in the tray.
- Check that CD label is facing up.
- Check that PAUSE mode is not on.
- Check that CD function is selected.
- Use CD lens cleaner.
- Clean the disc.
- Try another CD.

CD sound skips

- Clean the disc.
- Check disc for warping, scratches, or other damage.
- Check if something is causing the system to vibrate. If so, move the system.
- Make sure the speakers are at least 3 feet away or on a different surface from the main unit.

CD button will not respond, or does not change discs when you press DISC SKIP

- Switch to another function (TUNER, BT and LINE IN) and then back to CD.

Remote control does not work

- Check that the batteries are properly installed.
- Replace weak batteries.
- Check the system is plugged into power source.
- Point the remote directly at the system's front panel.
- Move closer to the system.
- Remove any obstacles between the remote and the system.

ADDITIONAL INFORMATION

Disconnect the audio system from the power source before performing any maintenance.

Cleaning

Clean the exterior of the system using a soft dust cloth.

CD Player

CAUTION! This system operates with a laser. It must be opened by only a qualified technician.

Handling CDs

- Do not touch the signal surfaces. Hold CDs by the edges, or by one edge and the hole. Do not affix labels or adhesive tapes to the label surfaces. Do not scratch or damage the label. CDs rotate at high speeds inside the player. Do not use damaged (cracked or warped) CDs.

Cleaning CDs

- Dirty CDs can cause poor sound quality. Always keep CDs clean by wiping them gently with a soft cloth from the inner edge toward the outer perimeter.
- If a CD becomes dirty, wet a soft cloth in water, wring it out well, wipe the dirt away gently, and then remove any water drops with a dry cloth.
- Do not use record cleaning sprays or antistatic agents on CDs. Also, never clean CDs with benzene, thinner, or other volatile solvents which may cause damage to disc surface.

Technical specifications

Rating Plate: Look for it at the back of the set.

The descriptions and characteristics given in this document are given as a general indication and not as a guarantee. In order to provide the highest quality product possible, we reserve the right to make any improvement or modification without prior notice. The English version serves as the final reference on all products and operational details should any discrepancies arise in other languages.

LIMITED WARRANTY

AVC MULTIMEDIA ("AVC") makes the following limited warranty. This limited warranty extend to the original consumer purchaser and is limited to non-commercial use of the product.

One Year Parts & Labor Warranty

AVC products purchased in the United States or Canada are warranted to be free from defects in materials or workmanship for a period of one year from the date of their original retail purchase. If the unit fails to conform to this warranty, we will service the product using new or refurbished parts and products, at **AVC's** sole discretion.

During a period of one year from the effective warranty date, **AVC** will provide, when needed, service labor to repair a manufacturing defect at its designated Service Center. To obtain warranty service in the United States or Canada, you must first call our **Customer Support Center at 1-877-252-6873, during the hours listed in the box below.** The determination of service will be made by **AVC** Customer Support. **PLEASE DO NOT RETURN YOUR UNIT TO AVC WITHOUT PRIOR AUTHORIZATION.** New or remanufactured replacements for defective parts or products will be used for repairs by **AVC** at its designated Service Center for one year from the effective warranty date. Such replacement parts or products are warranted for an additional one year from the date of repair or replacement. The Customer will be required to ship the unit to the Service Center indicated at the time Customer Support is contacted to make the necessary repairs. The customer is responsible for all transportation charges to the service facility.

Packaging and Shipping Instruction

When you send the product to the **AVC** service facility you must use the original carton box and packing material or an equivalent as designated by **AVC**.

Your Responsibility

- (1) You must retain the original sale receipt to provide proof of purchase.
- (2) These warranties are effective only if the product is purchased and operated in the United States or Canada.
- (3) Warranties extend only to defects in material or workmanship, and do not extend to any product or parts which have been lost or discarded, or damage to product or parts caused by misuse, accident, improper operation or maintenance, or use in violation of instructions provided with the product, or to product which has been altered or modified without authorization of **AVC**, or to products or parts thereof which have had the serial number removed or changed.

Out of Warranty

In the event your product requires repair after the limited warranty period has expired, please contact our Customer Support Center at **1-877-252-6873** or **www.RCAav.com**

Hours: Monday–Thursday: 9am–7pm, Friday: 9am–5pm, Saturday: 9am–NOON Eastern time.

Important:

You are responsible for any transportation, shipping or insurance relative to the return of product to our Product Returns Center.

All warranties implied by state law, including the implied warranties of merchantability and fitness for a particular purpose, are expressly limited to the duration of the limited warranties set forth above. With the exception of any warranties implied by state law as hereby limited, the foregoing warranty is exclusive and in lieu of all other warranties, guarantees, agreements and similar obligations of manufacturer or seller with respect to the repair or replacement of any parts. In no event shall **AVC** be liable for consequential or incidental damages.

No person, agent, distributor, dealer or company is authorized to change, modify or extend the terms of these warranties in any manner whatsoever. The time within action must be commenced to enforce any obligation of **AVC** arising under the warranty or under any statute, or law of the United States or Canada or any state thereof, is hereby limited to one year from the date of purchase. This limitation does not apply to implied warranties arising under state law.

This warranty gives you specific legal rights and you may also have other rights, which may vary, from state to state. Some states do not allow limitation on how long an implied warranty lasts, when an action may be brought, or the exclusion or limitation of incidental or consequential damages, so the above provisions may not apply to you.

For more information on other products and services, please visit our web site at **www.RCAav.com**

Important: Also keep your "Bill of Sale" as proof of purchase.

Model no.....
Product name.....
Type of set.....
Serial no.....
Invoice no.....
Date purchased.....
Dealer name.....

FOR SUPPORT, SERVICE AND REPAIR, PLEASE VISIT **www.RCAav.com**

Specifications and external appearance are subject to change without notice.

© 2014 AVC MULTIMEDIA