



W1166
Windows 10
2-in-1 Tablet with detachable keyboard
User Manual



Need Help? Visit support.rcatablets.com

Safety Precautions



Equipment tested for compliance as a complete unit

FCC Information

This device complies with Part 15 of the FCC Rules. Operation is subject to the following two conditions: (1) This device may not cause harmful interference, and (2) this device must accept any interference received, including interference that may cause undesired operation. Note: The grantee is not responsible for any changes or modifications not expressly approved by the party responsible for compliance. Such modifications could void the user's authority to operate the equipment.

This equipment has been tested and found to comply with the limits for a Class B digital device, pursuant to Part 15 of FCC Rules. These limits are designed to provide reasonable protection against harmful interference in a residential installation. This equipment generates, uses, and can radiate radio frequency energy and, if not installed and used in accordance with the instructions, may cause harmful interference to radio communications. However, there is no guarantee that interference will not occur in a particular installation. If this equipment does cause harmful interference to radio or television reception, which can be determined by turning the equipment off and on, the user is encouraged to try to

correct the interference by one or more of the following measures:

- Reorient or relocate the receiving antenna.
- Increase the separation between the equipment and receiver.
- Connect the equipment into an outlet on a circuit different from that to which the receiver is connected.
- Consult the dealer or an experienced radio/TV technician for help.

Warning: Changes or modifications not expressly approved by the party responsible for compliance (MLB International Inc., PO Box 1214, Lockport, NY, 14095, Tel: 716-240-0902) could void the user's authority to operate the equipment.

CAN ICES-3(B) / NMB-3(B)

This device complies with Industry Canada License-exempt RSS Standard(s). Operation is subject to the following two conditions: (1) This device may not cause interference, and (2) this device must accept any interference, including interference that may cause undesired operation of the device.

RF exposure information (SAR)

this device is designed and manufactured not to exceed the emission limits for exposure to radio frequency (RF) energy set by the Federal Communications Commission of the United States. During SAR testing, this device was set to transmit at its highest certified power level in all tested frequency bands, and placed in positions that simulate RF

exposure in usage against the head with no separation, and near the body with the separation of 0 mm. Although the SAR is determined at the highest certified power level, the actual SAR level of the device while operating can be well below the maximum value. This is because the phone is designed to operate at multiple power levels so as to use only the power required to reach the network. In general, the closer you are to a wireless base station antenna, the lower the power output.

The exposure standard for wireless devices employing a unit of measurement is known as the Specific Absorption Rate, or SAR. The SAR limit set by the FCC is 1.6W/kg.

This device is complied with SAR for general population / uncontrolled exposure limits in ANSI/IEEE C95.1-1992 and had been tested in accordance with the measurement methods and procedures specified in IEEE1528. This device has been tested and meets the FCC RF exposure guidelines when tested with the device directly contacted to the body.

The FCC has granted an Equipment Authorization for this model phone with all reported SAR levels evaluated as in compliance with the FCC RF exposure guidelines. SAR information on this model phone is on file with the FCC and can be found under the Display Grant section of www.fcc.gov/oet/ea/fccid after searching on FCC ID: A2HW1166.

For this device, the highest reported SAR value for usage against the body is 0.599 W/kg. While there may be differences between the SAR levels of various phones

and at various positions, they all meet the government requirements. SAR compliance for body-worn operation is based on a separation distance of 0 mm between the unit and the human body. Carry this device at least 0 mm away from your body to ensure RF exposure level compliant or lower to the reported level. To support body-worn operation, choose the belt clips or holsters, which do not contain metallic components, to maintain a separation of 0 mm between this device and your body. RF exposure compliance with any body-worn accessory, which contains metal, was not tested and certified, and use such body-worn accessory should be avoided.

Warning: the AC adapter is used as disconnect device and it should remain readily operable during intended use. In order to disconnect the mains plug from mains completely, the AC adapter should be disconnected from the mains socket outlet completely.

Caution: Use of controls or adjustments or performance of procedures other than those specified may result in hazardous radiation exposure.

Service Information

This product should be serviced only by those specially trained in appropriate servicing techniques. For instructions on how to obtain service, refer to the warranty included in this guide.

IMPORTANT SAFETY INSTRUCTIONS

PLEASE READ AND SAVE THIS FOR FUTURE REFERENCE

Some of the following information may not apply to your particular product; however, as with any electronic product, precautions should be observed during handling and use.

- Read these instructions.
- Keep these instructions.
- Heed all warnings.
- Follow all instructions.
- Do not use this apparatus near water.
- Clean only with dry cloth.
- Do not block any ventilation openings. Install in accordance with the manufacturer's instructions.
- Do not install near any heat sources such as radiators, heat registers, stoves, or other apparatus (including amplifiers) that produce heat.
- Protect the power cord from being walked on or pinched particularly at plugs, convenience receptacles, and the point where they exit from the apparatus.
- Only use attachments / accessories specified by the manufacturer.
- Unplug this apparatus during lightning storms or when unused for long periods of time.

- Refer all servicing to qualified service personnel. Servicing is required when the apparatus has been damaged in any way, such as power-supply cord or plug is damaged, liquid has been spilled or objects have fallen into the apparatus, the apparatus has been exposed to rain or moisture, does not operate normally, or has been dropped.

ADDITIONAL SAFETY INFORMATION

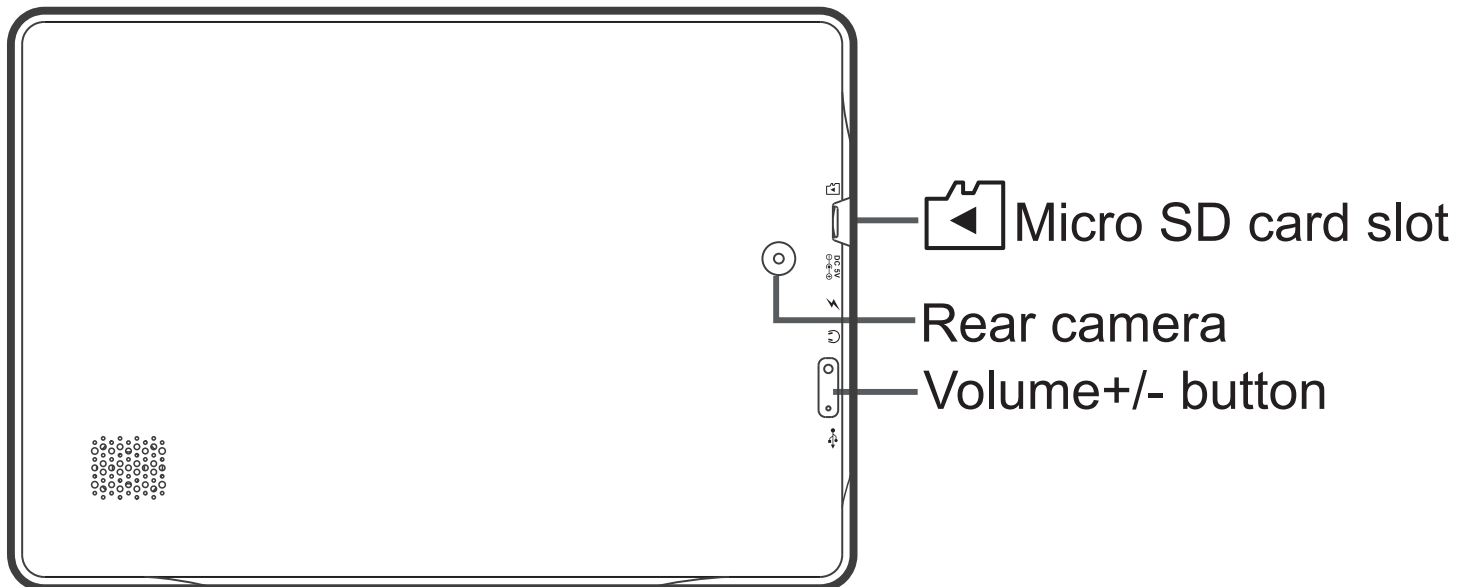
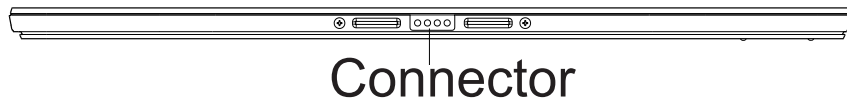
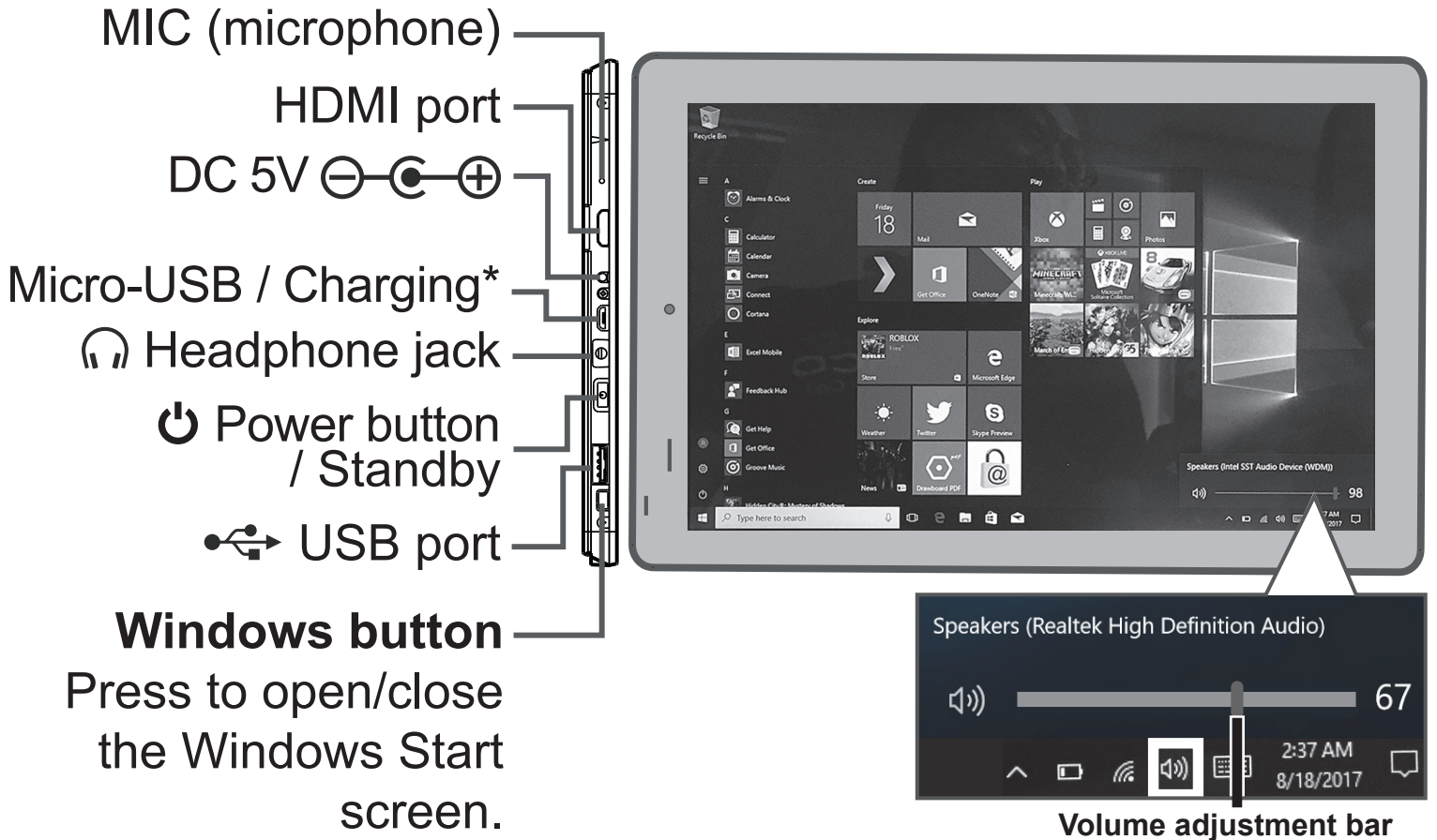
- The AC adapter and apparatus shall not be exposed to dripping or splashing and no objects filled with liquids, such as vases, shall be placed on the apparatus.
- Always leave sufficient space around the product for ventilation. Do not place product in or on a bed, rug, in a bookcase or cabinet that may prevent air flow through vent openings.
- Do not place lighted candles, cigarettes, cigars, etc. on the product.
- Care should be taken so that objects do not fall into the product.
- Do not attempt to disassemble the cabinet. This product does not contain customer serviceable components.
- To prevent the risk of fire or electric shock, do not expose this apparatus to rain or moisture.
- Do not play your headset at high volume. Hearing experts warn against extended high-volume play.


Contents

Safety Precautions	1
Important Safety Instructions	5
Startup	8
Overview of Controls	6
Keyboard	10
Accessory	11
Connections	12
Battery Management and Charging	12
USB	14
Micro SD	14
HDMI	15
Headphone	15
Using your Tablet	16
Turning your Tablet on	16
Turning your Tablet off	17
Using the Touchscreen.....	19
Windows Start Screen	21
Action Center	24
Tablet Mode Screen	27
Customizing Apps	29
Connecting to a Wi-Fi Network	30
Bluetooth	31
Synchronizing your Tablet	31
Recovery your Tablet	32
Additional Information	33
Trouble Shooting	33
Copyright and Trademark Notices	34
Specifications	35
Limited Warranty	36

Startup

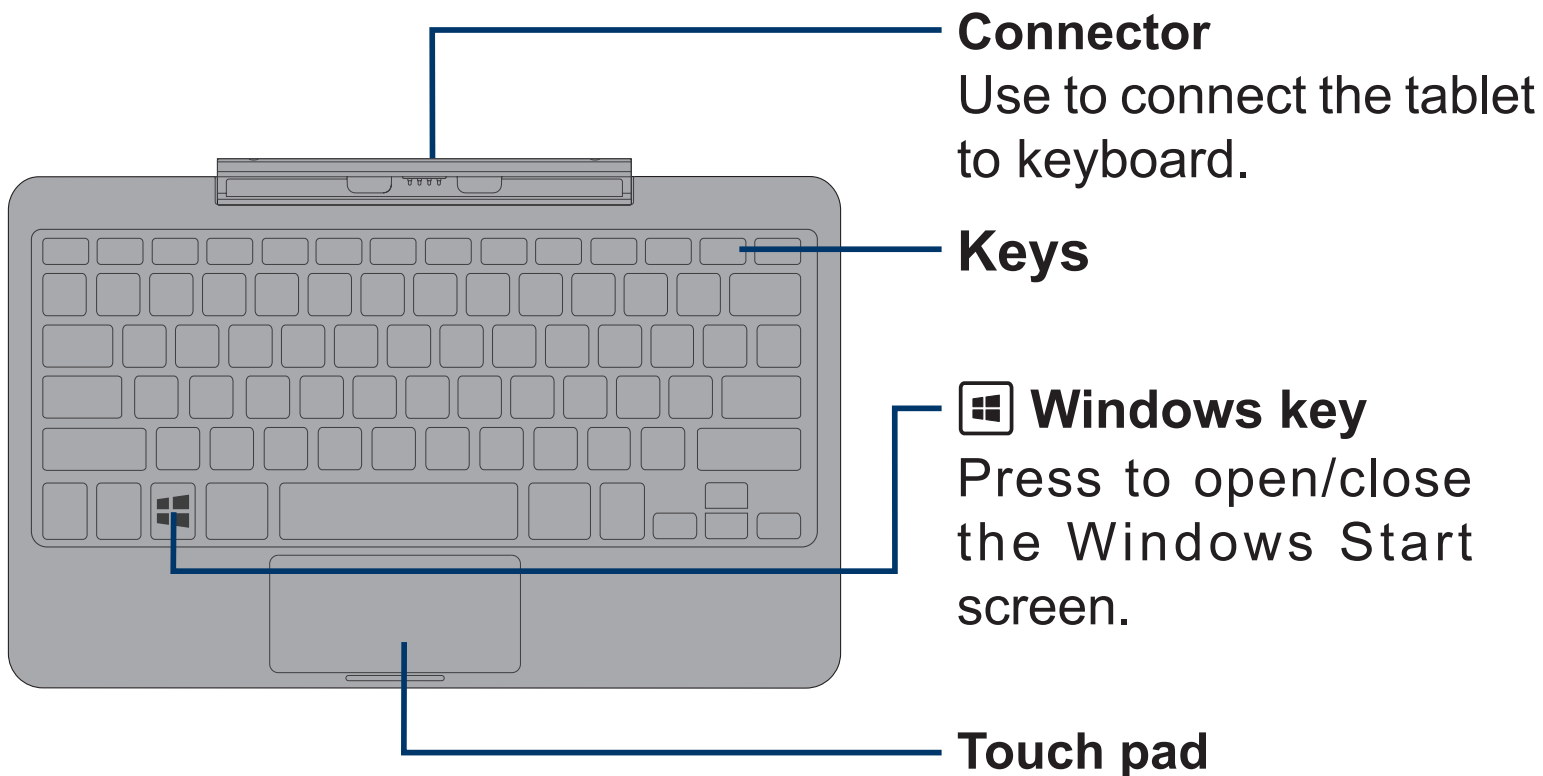
Overview of Controls



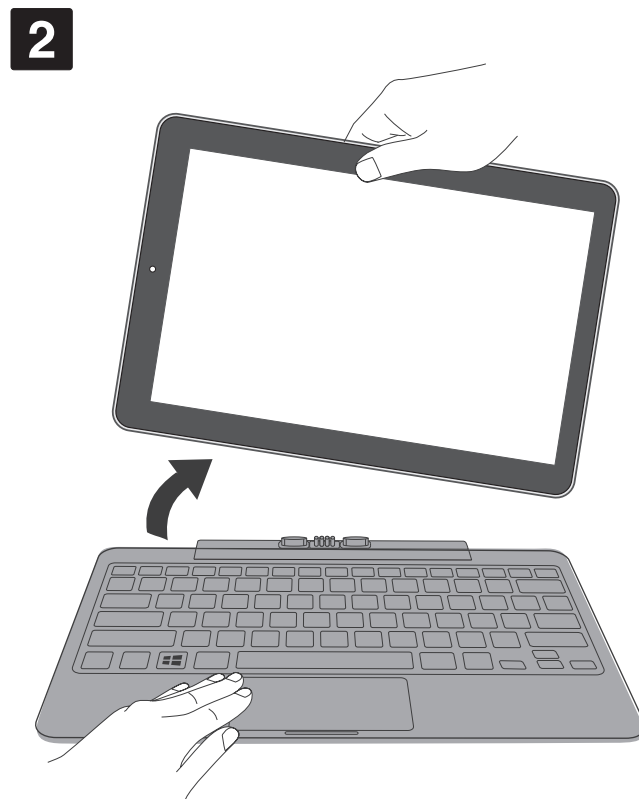
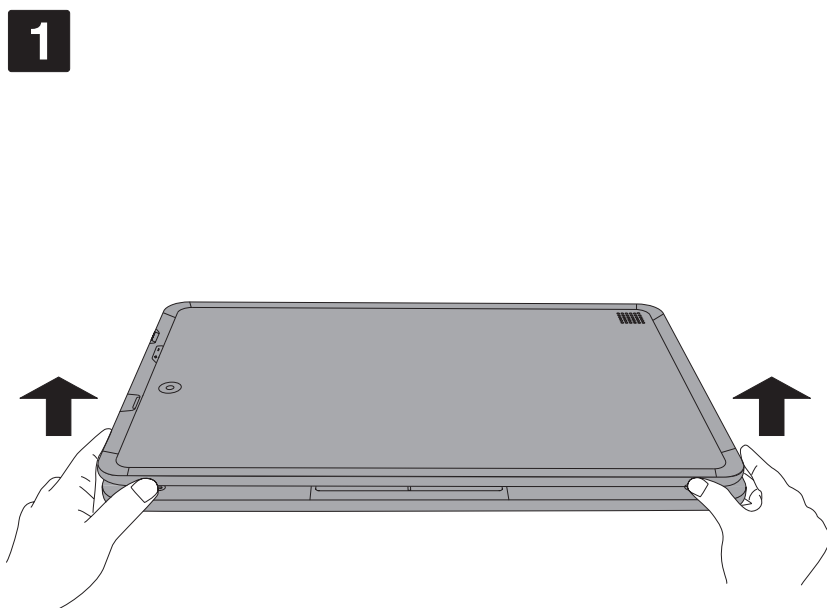
Item	Description
Microphone	For voice input.
HDMI port	Connect to a TV or a display device.
DC jack	Connect with 5V DC charger.
Micro-USB port	Use to charge the tablet's battery. For charging at either OFF mode or Standby mode.
Headphone jack	Headphone connection for personal listening.
⏻ Power button	Press to enter standby/wake up mode, press and hold to switch On/Off the unit.
USB port	Connect to a USB storage device or a mouse or a wired keyboard.
Connector	Use to connect the keyboard.
Micro SD card slot	Accepts micro SD card (up to 128GB).
Volume +/- button	Press to increase/decrease the volume.
Windows  button	Press to open/close the Windows Start screen.

Keyboard

Overview

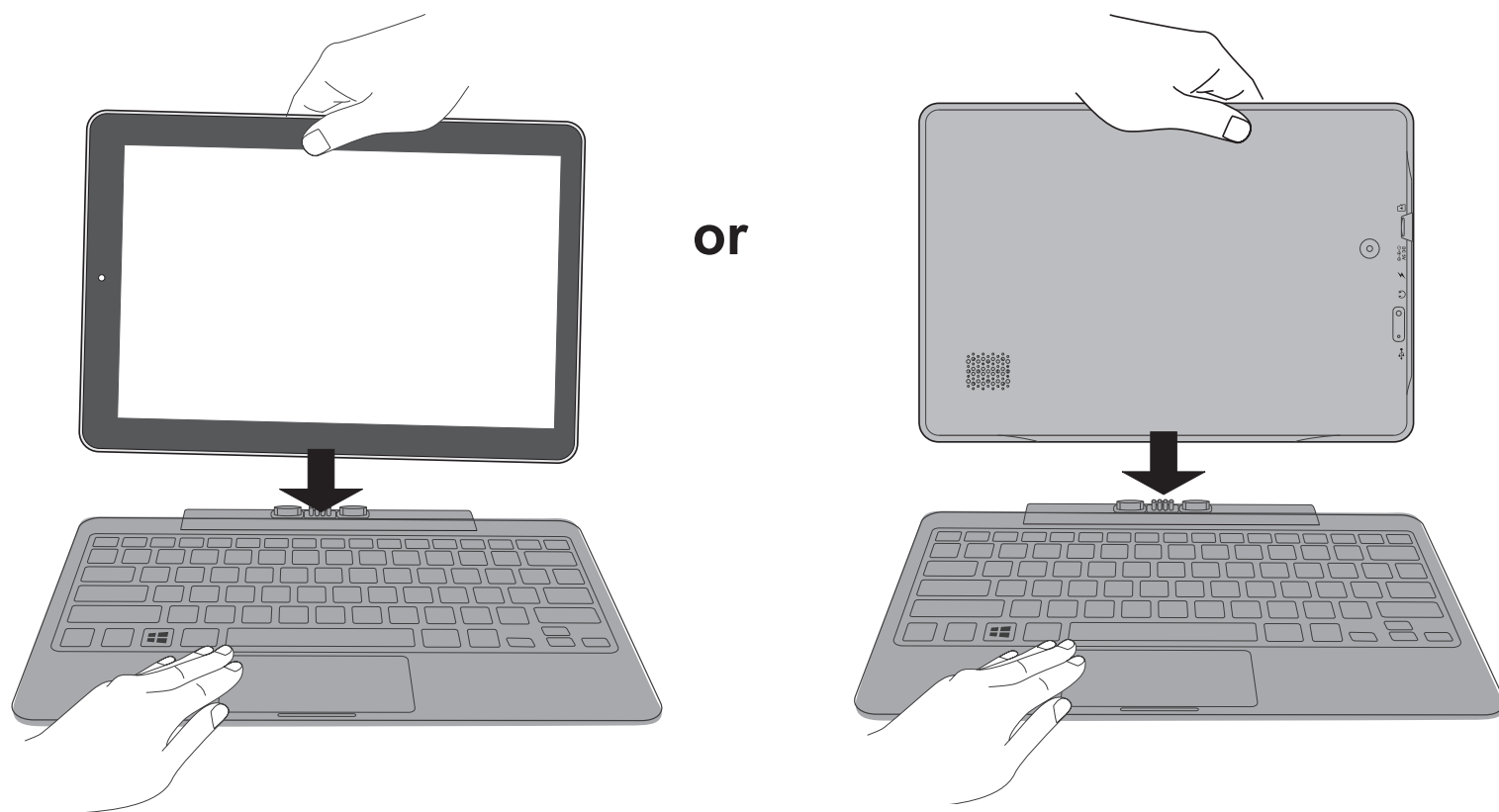


Remove tablet from keyboard



Tablet docking

There are two ways to dock the tablet onto the keyboard.



NOTE

The keyboard connects to the tablet via the Connector. When the connection is successful:

- If the tablet is in PC mode, it will automatically adjust its settings to use the keyboard.
- If the tablet is in Tablet mode, the message box **"Do you want to exit tablet mode?"** will display on the bottom of the screen. Choose "Yes" or "No" to proceed.

Accessory

The following accessory is included.

AC Adapterx1






Connections

Battery Management and Charging

The tablet has a built-in rechargeable battery.

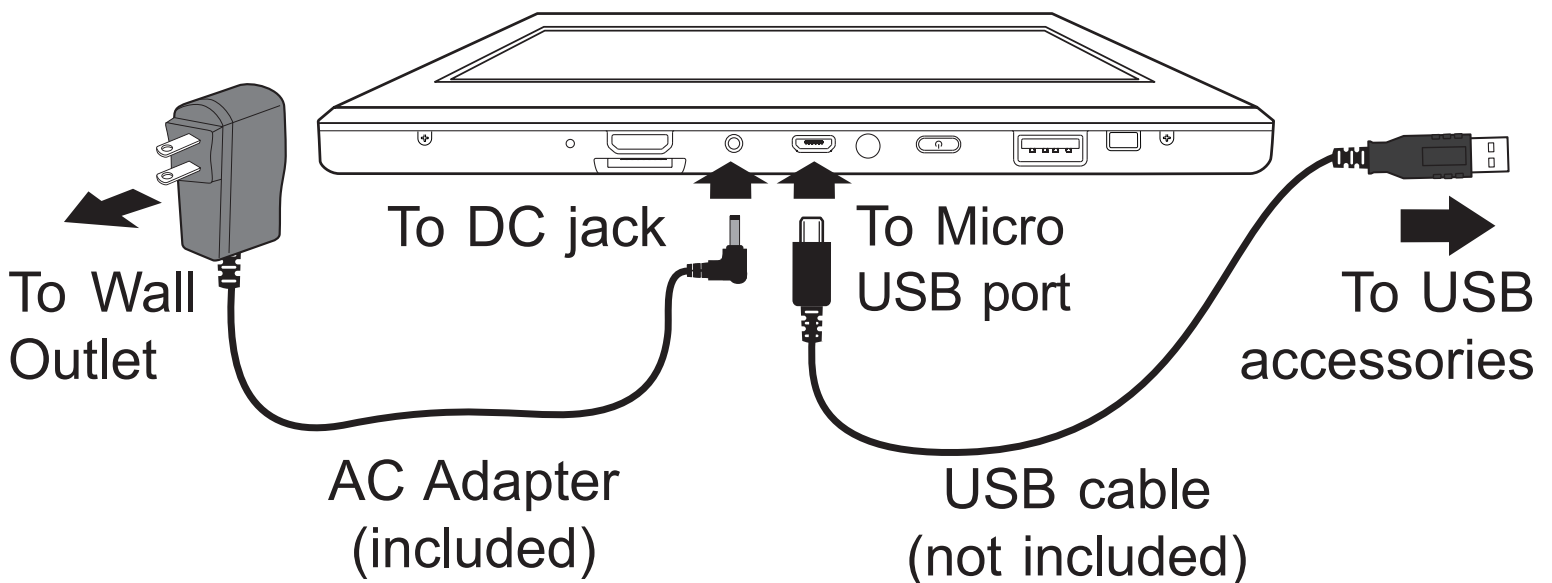
Battery Icon

The battery icon displays in the taskbar and the Settings charm.

Battery icon	Description
	Full battery
	
	Low battery and need to charge
	Battery is charging.
	Battery is fully charged and AC adapter is connected.

Charging the Battery

Use the AC Adapter or the Micro-USB* port to charge the battery.



Note: Micro USB port for charging at either OFF mode or Standby mode.

Note: In order to keep the battery working in best condition, please pay attention to the following:

- The included AC adapter is for use with this unit only. Do not use it with other equipment.
- Please do not charge the battery in high temperatures.
- Do not wait for the battery to be fully depleted before charging again. Keep the battery charged as needed.
- If tablet has not been used for a long period of time, the battery might be in over discharge protection mode and may take longer to charge.

IMPORTANT!

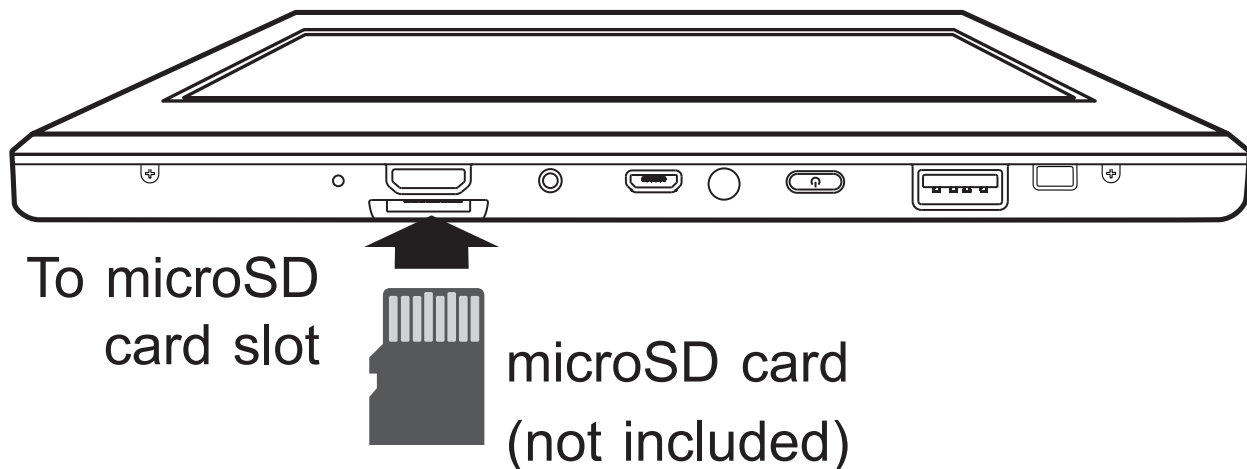
If your tablet's battery contains less than 5% charge, it will not power on. Charge your tablet with the provided AC adapter for several minutes before attempting to power on again.

USB

Connect your tablet to a USB storage device with the USB cable (not included), to transfer music, pictures and other files in both directions.

The tablet can be connected to a keyboard, a mouse or other input devices via USB cable and use it just as you would with a PC.

Micro SD



Insert the micro SD card into the tablet's Micro SD slot until it clicks.

To check the storage of the micro SD card, go to **Settings -> System -> Storage**.

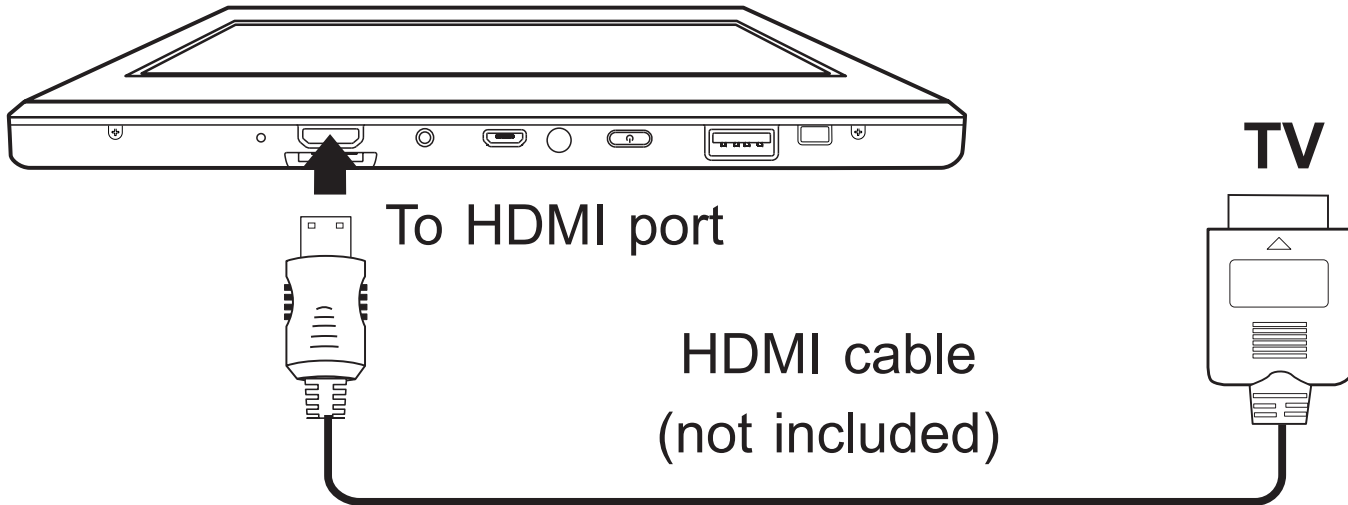
Remove the micro SD card by pushing in on the card's edge. The card will pop out and can be removed.

Notes:

- You can use micro SD™ card and micro SDHC™ card (up to 128GB, SD card not included).
- Never remove or insert micro SD card in On mode.

HDMI

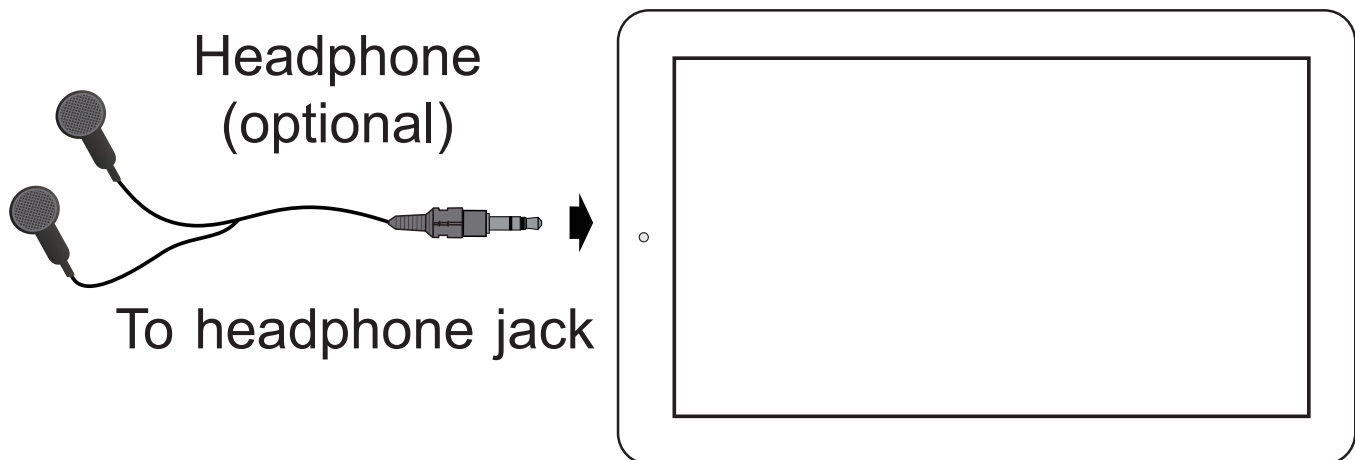
You can connect the unit to a TV or other display device using an HDMI cable through the HDMI port.



The system interface on the unit is automatically synchronized with your TV screen.

Headphones

Headphones can be connected to the tablet's Headphone jack.



Using your Tablet

Turning your Tablet on

Turning your Tablet on for the first time

When using the tablet for the first time, you will be required to setup the following:

1. Press and hold the **Power** button for 3 seconds to turn on the unit.
2. Select the region and language, then tap **Next**.
3. Carefully read the License terms, and tap **Accept**.
4. Follow the onscreen instructions to setup your tablet.

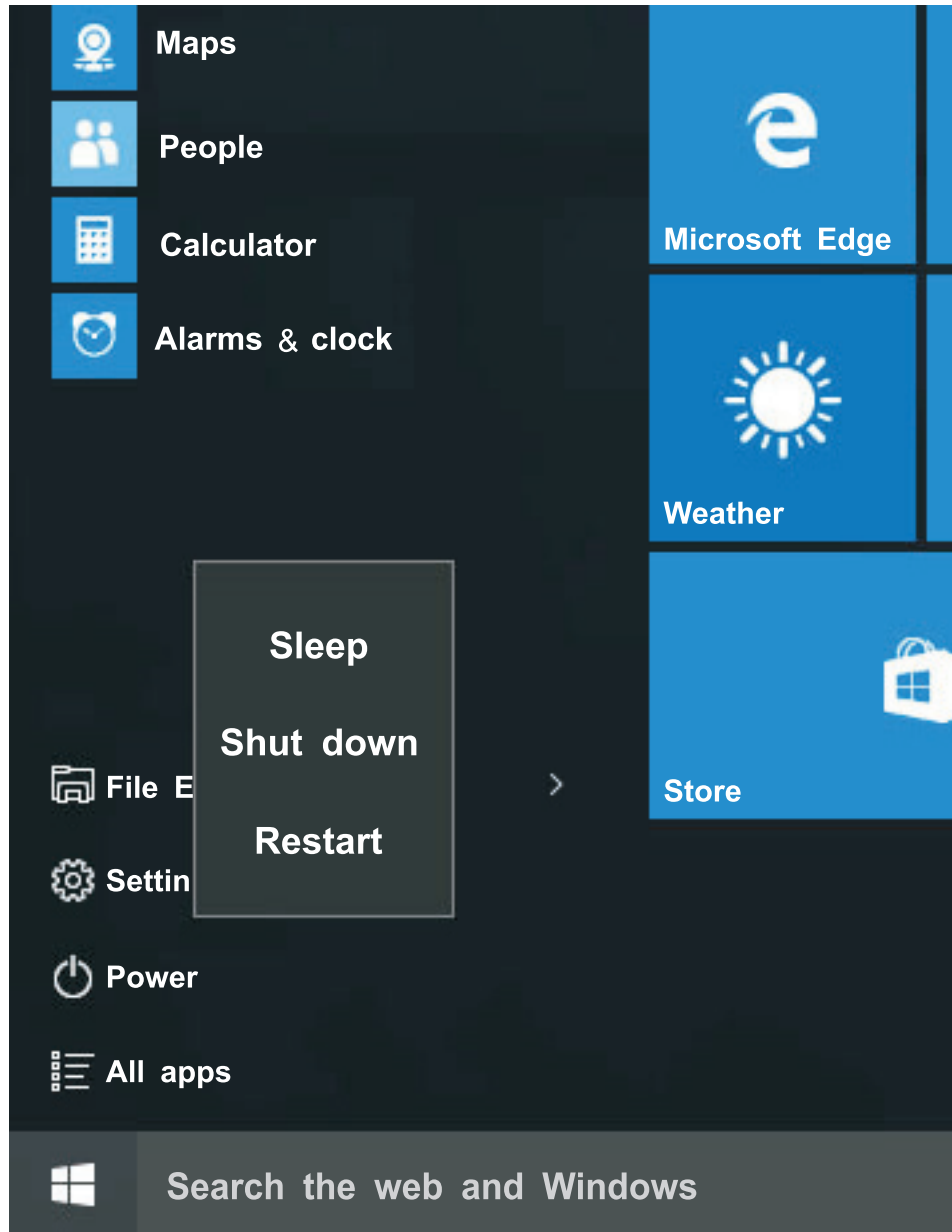
Turning your Tablet on in standby mode

1. Press the **Power** button to turn on the tablet screen.
2. Swipe up the lock screen from the bottom edge of the display.






The tablet is ready for use after the Windows desktop screen displays.

Turning your Tablet off



Power the tablet Off

- a: Tap the  icon in the lower-left corner of the screen or click  **Windows** key on the keyboard to show the Windows Start screen.
b: Go to the Tablet mode (swipe in from the right edge of the screen or tap the  icon in the lower-right corner of the screen to launch the Action Center screen, tap **Tablet mode** to turn it on).

2. Tap **⏻ Power** in the lower-left corner of the screen, it will display 3 options (Sleep, Shut down and Restart).
3. Select **Shut down** to power the tablet off.

Note: If your tablet is unresponsive, press and hold the **⏻ Power** button until the "**Slide to shut down your PC**" message appears, then slide it to the bottom edge of the display and the tablet will be powered off, or press & hold the **⏻ Power** button for 10 seconds to force SHUT DOWN the unit.

Put the tablet to Sleep

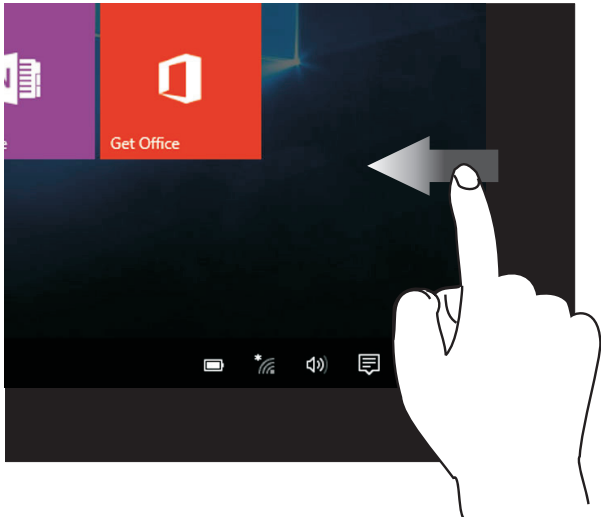
You can put your tablet to Sleep mode by doing either of the following:

- Go to the Windows start screen or the Tablet mode and tap **⏻ Power** in lower-left screen, select **Sleep** and tap it.
- Briefly press the **⏻ Power** button to put the tablet in sleep mode. If you don't operate for some time, the tablet will enter sleep mode automatically.

Tip: You can go to **Settings -> System -> Power & sleep** to set the screen and sleep timeout.

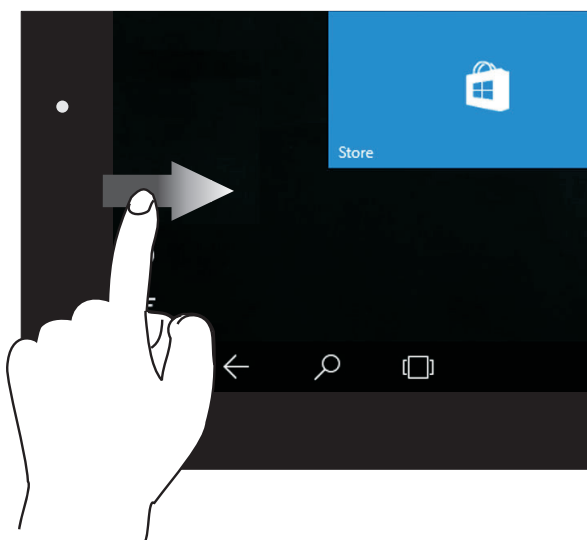
Using the Touchscreen

Here are some basic procedures for interacting with the touchscreen.



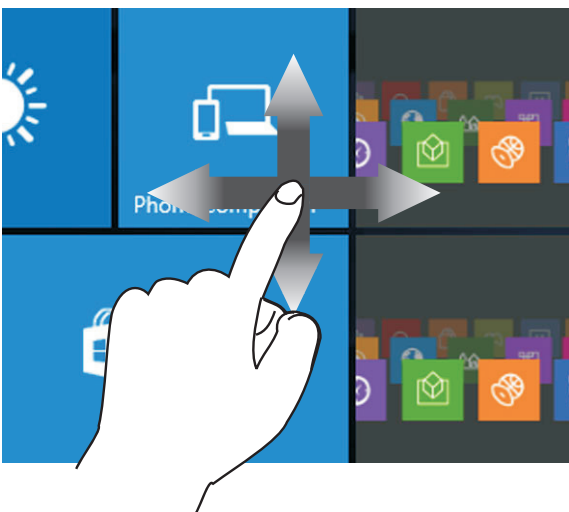
Right edge swipe

Swipe from the right edge of the screen to launch the Action Center screen.



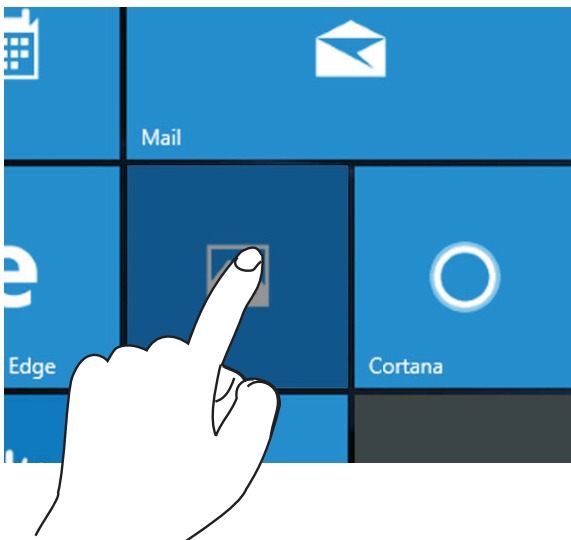
Left edge swipe

Swipe from the left edge of the screen to shuffle your running apps.



Finger slide

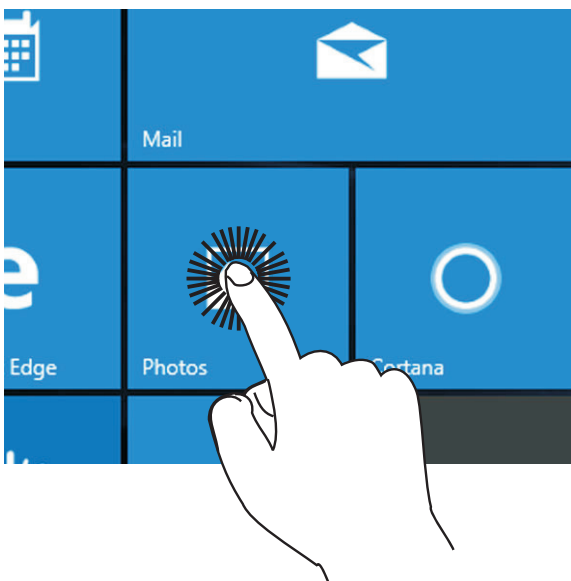
Slide your finger to scroll up or down; pan the screen left or right.



Tap/Double tap

To select an item on the touchscreen, lightly tap it.

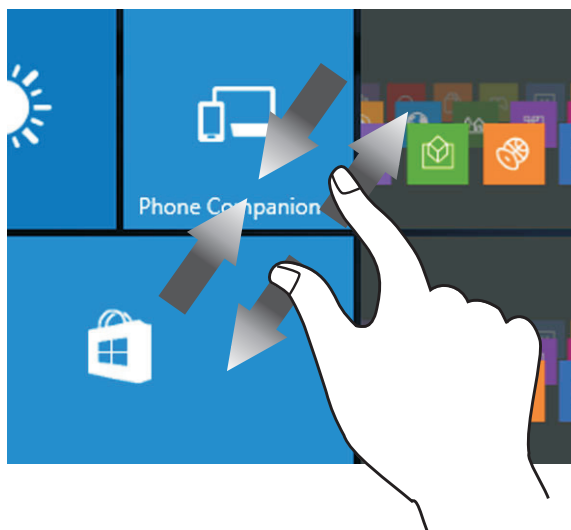
On Desktop mode, double tap an application to launch it.



Touch & Hold

To move an app, touch and hold the app tile and drag it to a new position;



Touch and hold an app to customize it.

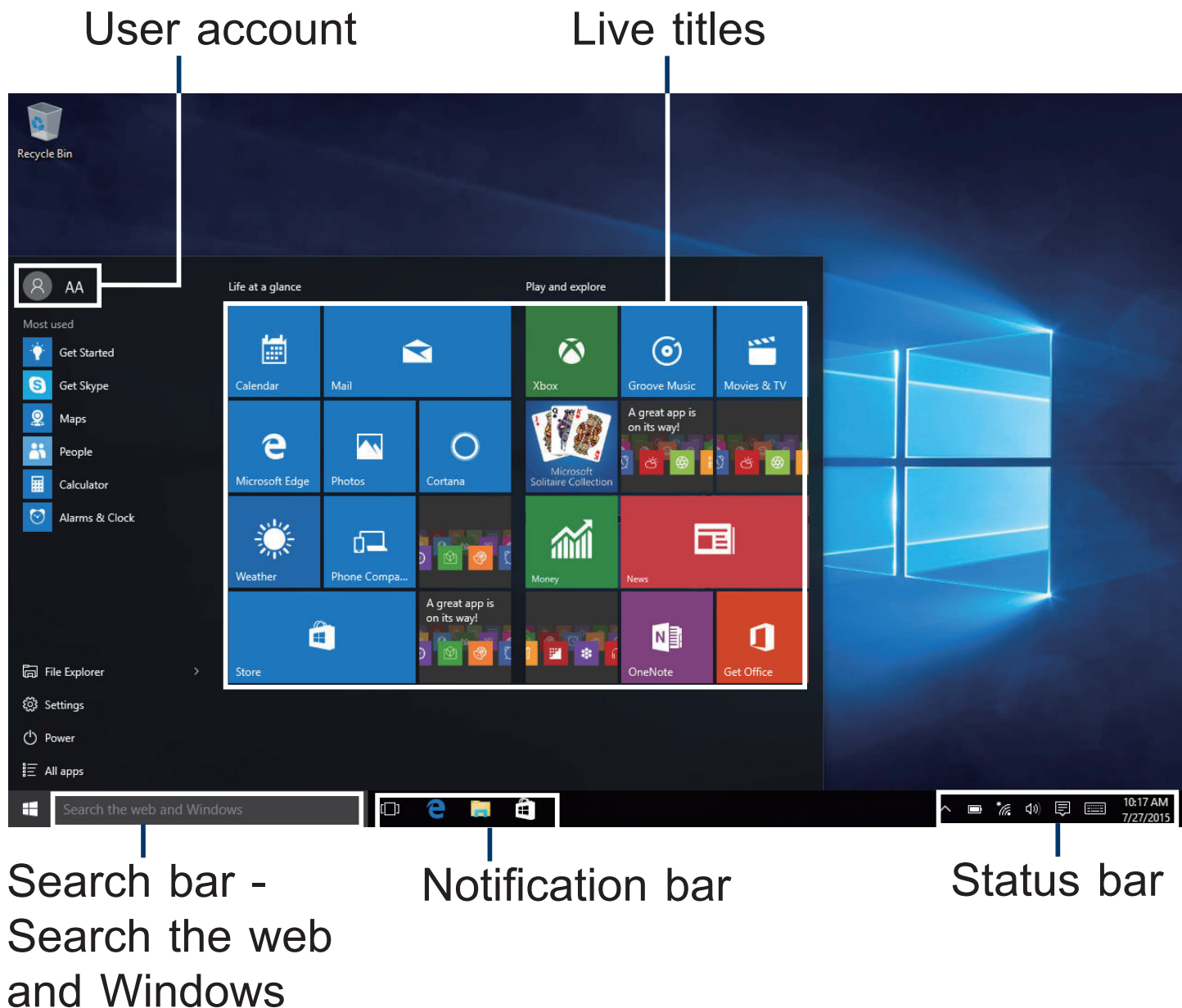


Zoom

By placing two fingers on the screen, you can slide them apart to "Zoom In", or pinch them together to "Zoom Out".

Windows Start Screen

Tap the  icon in the lower-left corner of the screen or click  **Windows** key on the keyboard to show the Windows Start screen.



File Explorer

You can explore the files and folders with the File Explorer application.

Settings

Allows you to access the settings of your tablet. Tap it to enter the **Settings** screen.

Power

Tap  **Power** and it will display 3 options (Sleep, Shut down and Restart).

- Sleep: Put it to sleep mode.
- Shut down: Shut down your tablet.
- Restart: Restart your tablet.

All Apps

Tap  All Apps in the lower-left corner of the screen to enter the **All Apps** screen.

In All Apps screen, you can:

- Move the All Apps screen: Slide down or up.
- Open an App: Tap its icon.
- Customize apps: Touch and hold one app then release to show the options (Pin to Start/Unpin from Start, Pin to taskbar and Uninstall).

Windows











Tap Windows  icon to open/close the Windows Start screen.

Tip: You can touch and hold the screen for 2 seconds then release to show the right-click menu.


Status bar

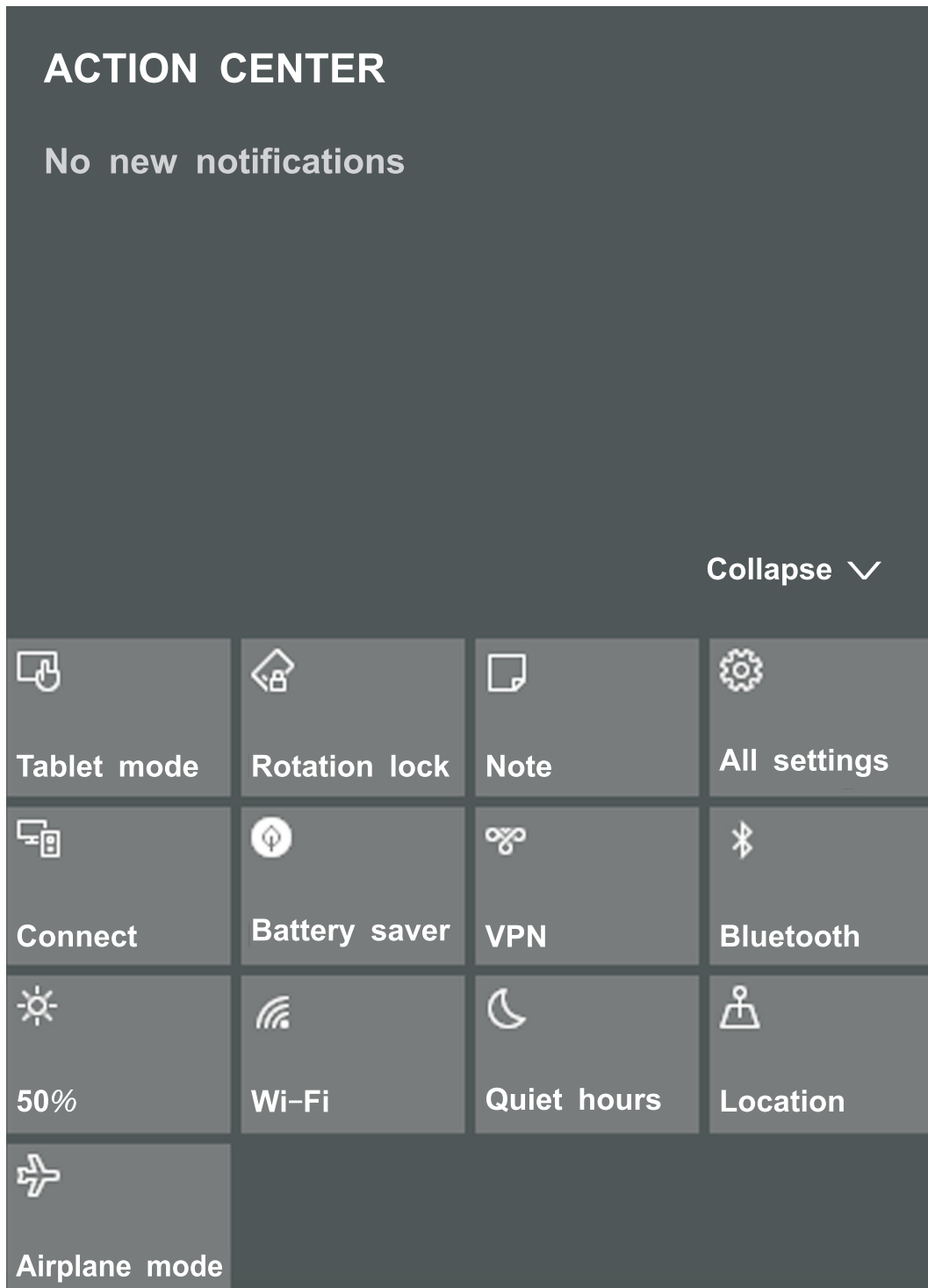
The status bar in the lower-right corner of the screen shows various indicators, including WiFi connection, battery status, speaker level, action center icon and keyboard icon.

The below table lists some of the frequently used icons in the Notification & Status bar:

Icon	Description
	Shows the battery status.
	Displays when a Wi-Fi network connected.
	Displays when Wi-Fi is turned on but there is NO a Wi-Fi network connection.
	Displays when Wi-Fi is turned off.
	Airplane mode is on.
	Tap to adjust the speaker volume.
	Action Center - Tap to display settings for commonly performed tasks.
	Tap to show the soft keyboard.
	Tap to see the recent task.
	Tap to see all open tasks in a single view.

Action Center

To launch the ACTION CENTER screen, swipe in from the right edge of the screen or tap the  icon in the lower-right corner of the screen. You can then adjust various settings on the tablet by touching the corresponding square.



Tablet mode

Tap it to open/close the Tablet mode.

Rotation lock

Tap it to lock/unlock the screen orientation.

Note

Tap it to open the Office OneNote app.

All settings

This tool allows you to access the settings of your tablet.

Connect

Searching for wireless display and audio devices.

Battery saver

Tap it to turn on/off Battery saver.

VPN

Add a VPN connection.

Bluetooth

Enable or disable Bluetooth.

Brightness level

It allows you to set the brightness level of the screen.

Wi-Fi

Enable or disable Wi-Fi, and connect to a wireless network so that you can check email, search the Web, or access social media websites.

Quiet hours

Tap it to turn on/off Quiet hours.

Location

Enable or disable Location. If this setting is on, each person who signs in to this device can change their own location settings.

Airplane mode

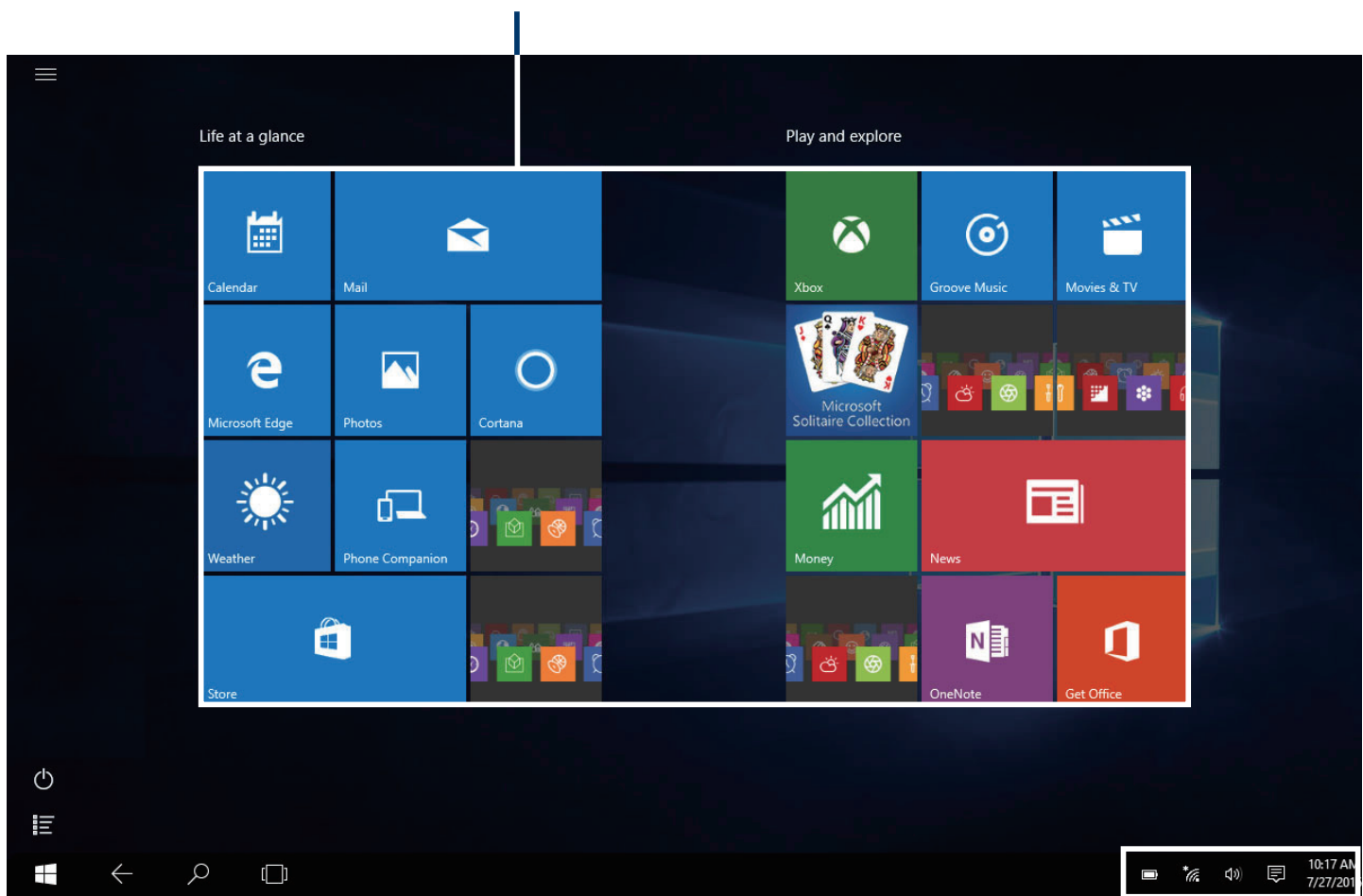
Enable or disable Airplane mode. Turn this on to stop all wireless communication.

Tablet Mode Screen

The tablet mode displays the Life at a glance and Play and explore, which act as a shortcut to Mail, Weather app, Windows Store, Microsoft Edge, and other installed applications.

You need to log on your Microsoft account before the application program completely runs.

Live titles



Status bar

Live Tiles on the screen change and update in real time so you can get real-time updates about news or sports, check what your friends are up to, and get the latest weather forecast.

Screen Icons

Most used

Tap this icon  in the upper-left corner of the screen to enter the **Most used** screen.

All Apps


Tap this icon  on the lower-left corner of the screen to enter the **All Apps** screen.

Back

Tap Back icon  to return to the previous screen.

- Once you go back to the home screen, you can't go back any further in your history.

Windows

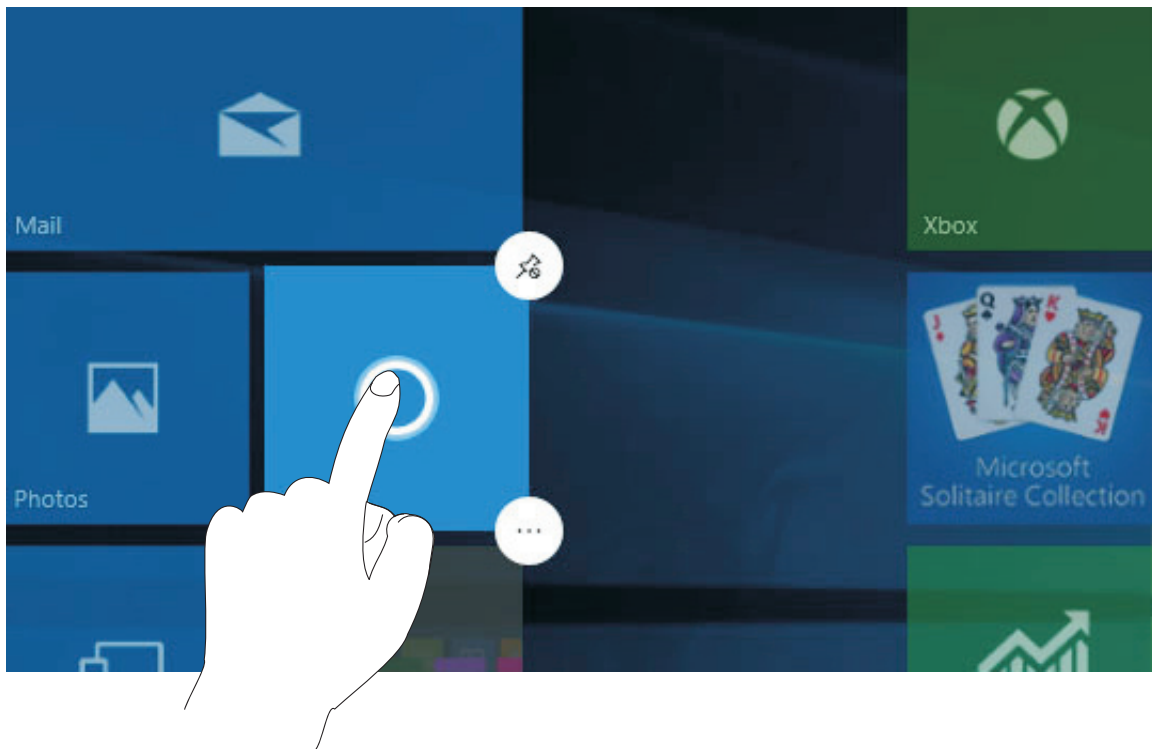
Tap Windows  icon to switch between the Tablet Start screen and the last app you opened.

Search

Tap Search  icon to search the web and Windows.

Customizing Apps

You can resize and unpin the apps from the start screen. Select one app and hold it until the Customize icon appears.



Unpin from Start

Tap to unpin the app tile from Start screen.




More options

Tap to select other options for customizing the app (Small, Medium, Wide, Large, Turn live tile off, Pin to taskbar or Uninstall).


Connecting to a Wi-Fi Network

1. Go to **Settings** -> **Network & Internet** -> **Wi-Fi**, slide it to the **On** position.
2. The device will scan Wi-Fi networks automatically and display those available.
3. Select an access point from the list of available Wi-Fi connections, then tap **Connect**.
4. When you are prompted for a password, enter your password and tap **Next**.
 - **If the device finds a network that you connected to previously, it will connect to it automatically.**
 - **If the Wi-Fi network does not appear in the list, it maybe a hidden network, please tap "Hidden Network" and input SSID name of network along with password for a connection.**


Tip: You can touch and hold the  **Wi-Fi** icon in Action Center screen until the **Go to Settings** appears and then tap it to enter the Wi-Fi setting screen.

Airplane mode

The Airplane mode disables the wireless connection, allowing you to use your tablet safely while in-flight.

If you see  icon displayed in the lower-right corner of the screen, the Airplane mode is on. You should turn off the Airplane mode to enable the wireless network.

Go to **Settings** -> **Network & Internet** -> **Airplane mode**, slide it to the **Off** position.

Tip: You can touch and hold the  **Airplane mode** icon in Action Center screen until the **Go to Settings** appears and then tap it to enter the Airplane mode setting screen.

Bluetooth

You can use Bluetooth to communicate between the unit and other Bluetooth devices, such as a smartphone.

1. Go to **Settings** -> **Devices** -> **Bluetooth**, slide it to the **On** position.
2. It will scan automatically and display the available bluetooth devices.
3. Tap an available bluetooth device name to pair with it and follow the instructions to complete the pairing.

Synchronizing your Tablet

Using a Microsoft account

If your computer has Microsoft Windows 8.1 or 10 installed, you can synchronize user settings of your tablet with your computer using a Microsoft account.

1. Go to **Settings** -> **Accounts** -> **Your account** to sign in with a Microsoft account.
2. Go to **Settings** -> **Accounts** -> **Sync your settings**, slide **Sync settings** to the **On** position .

Copying music, photos, and videos

1. Connect a USB storage device or a Micro-SD card to your tablet and copy the required files.
2. After the copy is complete, use the **Safely Remove Hardware** wizard to remove your tablet from USB storage device.

Recovery your Tablet

Go to **Settings** -> **Update & security** -> **Recovery** to recover your tablet.

Reset this PC

This lets you choose to keep your files or remove them, and then reinstalls Windows. Tap **Get started** and then choose an option.

Keep my files

Removes apps and settings, but keeps your personal files.

Remove everything

Removes all of your personal files, apps, and settings.

Advanced startup

This option enables you to start up from a device or compact disc (such as DVD or USB drive) and change your tablet's firmware settings, change Windows startup settings, or restore Windows from the system image. If you want to perform this action, click **Restart Now**.

NOTE: Third-party applications will be removed.

Trouble Shooting

Windows is not active automatically

Windows will be active automatically once you connect your tablet to a Wi-Fi network.

- Make sure that you have a Wi-Fi network connection.

Tablet displays network or service error message

- When you are located in places with poor signal, your tablet may lose its Wi-Fi connection. Try moving closer to the Wi-Fi router.

Touch screen response is slow or incorrect

If the tablet's touch screen response is incorrect, please try the following:

- Remove any protective film on the touch screen. The protective film may prevent the device recognition input.
- Make sure that your fingers are dry and clean before you tap the touch screen.
- Restart the tablet to clear any temporary software bugs.

Tablet is frozen or a serious error appears

- If the tablet is frozen or suspended, you may need to close the application or refresh your tablet.
- If the tablet is frozen or slow to respond, press and hold the power button for 8 seconds to perform a hard shut down and restart your tablet.

Tablet gets warm

- When using for a long time, the tablet may be warm. This is normal and will not affect the life or performance of the unit.

Tablet can not show video of opposite side during skype call

- The Wi-Fi signal is poor. Please move closer to your wireless router, or disconnect other devices from your wireless router, or increase bandwidth of internet connection.
- Please check the Wi-Fi setting. It's recommended to use an IEEE 802.11 b/g/n. certified Wi-Fi network.

Copyright and Trademark Notices

Intel Inside, Intel Inside logo and Atom are trademarks of Intel Corporation in the U.S. and /or other countries.

The Wi-Fi CERTIFIED Logo is a certification mark of the Wi-Fi Alliance.

The Wi-Fi Protected Setup Mark is a mark of the Wi-Fi Alliance

The *Bluetooth*[®] word mark and logos are registered trademarks owned by the *Bluetooth* SIG Inc. Other trademarks and trade names are those of their respective owners.



HDMI, the HDMI logo and High-Definition Multimedia Interface are trademarks, registered trademarks, or service marks of HDMI Licensing LLC in the United States and/or other countries.

About HDMI

High-Definition Multimedia Interface (HDMI) is a high-speed digital interface that can transmit uncompressed high definition video and digital multichannel audio. It delivers high quality picture and sound quality. HDMI is fully backward compatible with DVI. As required by the HDMI standard, connecting to HDMI or DVI products without HDCP (High bandwidth Digital Content Protection) will result in no Video or Audio output.

Specification

Power: DC IN 5V (operate with AC adapter)

Specifications and external appearance are subject to change without notice.

Limited Warranty

AVC MULTIMEDIA (“AVC”) makes the following limited warranty. This limited warranty extend to the original consumer purchaser and is limited to non-commercial use of the product.

One Year Parts & Labor Warranty

AVC products purchased in the United States or Canada are warranted to be free from defects in materials or workmanship for a period of one year from the date of their original retail purchase. If the unit fails to conform to this warranty, we will service the product using new or refurbished parts and products, at **AVC’s** sole discretion.

During a period of one year from the effective warranty date, **AVC** will provide, when needed, service labor to repair a manufacturing defect at its designated Service Center. To obtain warranty service in the United States or Canada, you must first contact our Customer Support Center at **support.rcatablets.com**. The determination of service will be made by **AVC** Customer Support. **PLEASE DO NOT RETURN YOUR UNIT TO AVC WITHOUT PRIOR AUTHORIZATION.** New or remanufactured replacements for defective parts or products will be used for repairs by **AVC** at its designated Service Center for one year from the effective warranty date. Such replacement parts or products are warranted for an additional one year from the date of repair or replacement. The Customer will be required to ship the unit to the Service Center indicated at the time Customer Support is contacted to make the necessary repairs. The customer is responsible for all transportation charges to the service facility.

Packaging and Shipping Instruction

When you send the product to the **AVC** service facility you must use the original carton box and packing material or an equivalent as designated by **AVC**.

Your Responsibility

- (1) You must retain the original sale receipt to provide proof of purchase.
- (2) These warranties are effective only if the product is purchased and operated in the United States or Canada.
- (3) Warranties extend only to defects in material or workmanship, and do not extend to any product or parts which have been lost or discarded, or damage to product or parts caused by misuse, accident, improper operation or maintenance, or use in violation of instructions provided with the product, or to product which has been altered or modified without authorization of **AVC**, or to products or parts thereof which have had the serial number removed or changed.

Out of Warranty

In the event your product requires repair after the limited warranty period has expired, please contact our Customer Support Center at **support.rcatablets.com**

Important: You are responsible for any transportation, shipping or insurance relative to the return of product to our Product Returns Center.

All warranties implied by state law, including the implied warranties of merchantability and fitness for a particular purpose, are expressly limited to the duration of the limited warranties set forth above. With the exception of

any warranties implied by state law as hereby limited, the foregoing warranty is exclusive and in lieu of all other warranties, guarantees, agreements and similar obligations of manufacturer or seller with respect to the repair or replacement of any parts. In no event shall **AVC** be liable for consequential or incidental damages.

No person, agent, distributor, dealer or company is authorized to change, modify or extend the terms of these warranties in any manner whatsoever. The time within action must be commenced to enforce any obligation of **AVC** arising under the warranty or under any statute, or law of the United States or Canada or any state thereof, is hereby limited to one year from the date of purchase. This limitation does not apply to implied warranties arising under state law.

This warranty gives you specific legal rights and you may also have other rights, which may vary, from state to state. Some states do not allow limitation on how long an implied warranty lasts, when an action may be brought, or the exclusion or limitation of incidental or consequential damages, so the above provisions may not apply to you.

For more information on other products and services, please visit our web site at: **support.rcatablets.com**

Important: Also keep your “Bill of Sale” as proof of purchase.

**FOR SUPPORT AND SERVICE, PLEASE CONTACT US
support.rcatablets.com**

© 2017 AVC MULTIMEDIA