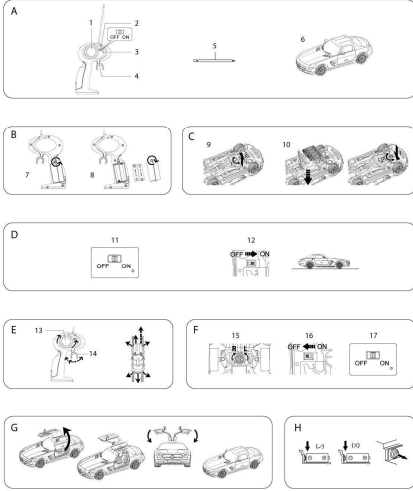




Real Drive Licensed R/C Car User Manual

Subtype LC258000.SLS

Instruction



EN Contents and overview

Functions and Specifications:

- All electrical devices (batteries) can be used with right polarity.
- Frequency: 270MHz, 40MHz
- Distance: 4.7 km (range for car and 2.4 km for transmitter).
- Maximum speed: 110km/h
- Speed: Low speed of 10km/h, TURBO at 110km/h.
- Recommended Car Size: 1/10

Components (Fig. A)

1. Steering Wheel
2. Power Switch OFF/ON
3. Power LED Lamp
4. Receiver
- 4.R/C Toy Receiver

Assembly Instructions

Install And Remove Batteries:

1. Insert batteries to transmitter (Fig. B)
2. Care must be taken to ensure correct insertion on transmitter open battery compartment, correct and insert two AA batteries (Fig. D)
3. Remove battery compartment and lock cover (Fig. E)
4. Insert batteries to car (Fig. C)
5. Both the rear axle cover and front axle battery door (Fig. B)
6. Insert two AA batteries at correct polarity, close battery door and turn door knob to lock lock (Fig. H)

Methods To Operate:

1. Switch power button to "ON" and place R/C Car on the ground (Fig. G)
1. Transmitter Power Switch
2. Receiver Power Switch
3. Push forward (Forward) throttle for driving (accelerating forward with light speed) back handle for steering (steering with right on blue left, right steering with left on red) (Fig. I)
4. Turn right while turning the Steering Wheel (Right)
5. Turn left while turning the Steering Wheel (Left)
6. Release forward throttle, pushing the throttle to neutral
7. When the throttle is returning, do not put your hand close to it, nor put it on the hub or control rod or metal spring
8. Do not stop or bump the car
9. Do not stop or bump the car
10. Do not stop or bump the car
11. The product is composed of complicated electronic devices and original parts, please do not attempt to disassemble or alter this product.

12. When batteries are low to power, the car speed will slow down or out of control.

13. Please charge the batteries.

14. Please charge the battery in a cool and dry place. Do not charge the battery in a hot, humid, or wet environment. Adjust vents to proper position according to display (Fig. J)

15. If the car is under pressure for a long time, the car body may be deformed. Hold the rear motor and wheel to the opposite direction and the front is flat again.

16. Do not double the car speed to avoid long use of controller.

17. To enable longer life of the batteries, please follow below operations:

- * Remove batteries when not in use.
- * Avoid overcharge. Overcharge will reduce the car's use time and shorten the life of the batteries.
- * Do not use the car for a long time.

18. The Radio remote operated vehicle R/C Car for digital recording. Please do not transmit into electrical noise.

Frequency And Environment:

1. When there is another car or radio noise frequency operating nearby, the transmitter will not function.
2. When there is another radio waves, the transmitter may not function. Try again at other frequency or time.
3. This product is designed to run on cement and asphalt surface. If run on wet asphalt surface, the car cannot move straight due to poor contact between the tires and road surface, and may spin 180° or more.

Note:

The equipment has been tested and found to comply with the limits for a Class B digital device pursuant to Part 15 of the FCC Rules. These limits are designed to provide reasonable protection against harmful interference to residential operations. This equipment operates and can radiate radio frequency energy, and if not installed and used in accordance with the instructions, may cause harmful interference to radio communications.

However, there is no guarantee that interference will not occur in a particular installation. If this equipment does cause harmful interference to radio or television reception, which can be determined by turning the equipment OFF and ON, you are encouraged to try to correct the interference by one or more of the following measures:

- * Reorient or relocate the receiving antenna.
- * Increase the separation between the equipment and receiver.
- * Connect the equipment into a circuit different from that to which the receiver is connected.
- * Consult the dealer or an experienced radio/TV technician for help.

This device complies with part 15 of the FCC Rules Operation is subject to the following two conditions:

- 1) This device may not cause harmful interference.
- 2) This device must accept any interference received, including interference that may cause the device to operate.

Changes or modifications not expressly approved by the party responsible for compliance could void the user's authority to operate the equipment.

Caution & Warning

- Rechargeable batteries are not to be recharged.
- Rechargeable batteries are to be removed from the toy before being charged.
- Rechargeable batteries are not to be charged together with other toys.
- Different types of batteries or new and used batteries are not to be mixed.
- Only batteries of the same specification are recommended to be used.
- Batteries are not to be short-circuited.
- Rechargeable batteries are not to be recharged from the toy.
- The supply terminals are not to be used for anything else.
- Do not mix old and new batteries.
- Do not use alkaline batteries (standard button cells) or rechargeable (NiCd) batteries (batteries).

WARNING:
CHOKING HAZARD - Toy contains small parts, Not for children under 3 yrs.

Guangdong Alpha Animation and Culture Co., Ltd
Room 210, 111, C.C. Road, 5th Floor, Huihuang Park,
16 Science Museum Road, Tianhe District, Guangzhou, P.R. China
Tel: +8620 2209 4682 Email: alpha@alpha.com Website: www.alpha.com

