

RACE-TIN™ 232 Real Drive Licensed R/C Car
COLLECTION

User Manual



AULDEY
 © 2007 AULDEY

Suitable Type: LC232020/30/40/50

Thank you for purchasing our product --232 Real Drive Licensed R/C Car. Please read the user manual carefully before using the product, and retain the information for future reference.

CAUTION

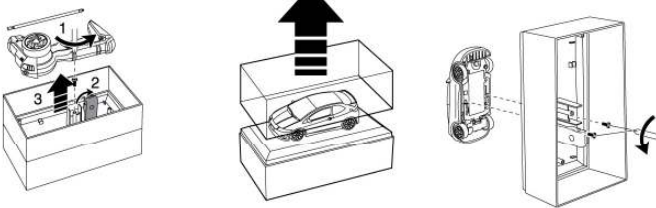
- Not-rechargeable batteries are not to be recharged;
- Rechargeable batteries are to be removed from the toy before being charged;
- Rechargeable batteries are only to be charged under adult supervision;
- Different types of batteries or new and used batteries are not to be mixed;
- Only batteries of the same or equivalent type as recommended are to be used;
- Batteries are to be inserted with the correct polarity;
- Exhausted batteries are to be removed from the toy;
- The supply terminals are not to be short-circuited;
- Do not mix old and new batteries;
- Do not mix alkaline batteries, standard (carbon-zinc) or rechargeable(Nickel-cadmium) batteries.

Functions And Specification

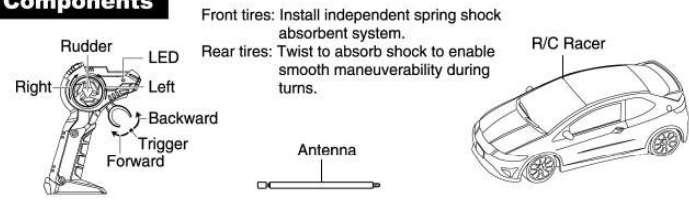
1. Scale: 1:40
2. Full Function: Forward, backward, turn left, turn right, stop;
3. Frequencies: 27MHz, 40MHz, 49MHz;
4. Batteries: 2 X "AAA" batteries for racer and 2 X "AA" for transmitter.(Battery not included)
5. Speed: 6Km/h;
6. Operating range: No less than 12m.

Racer, Controller And Antenna Release

1. Turn box up-side-down, use a cross-screwdriver to unscrew screws on base box bottom, and take out controller and antenna.
2. Lift up transparent cover.
3. Use a cross-screwdriver to unscrew car-locking screws on base box and release the car. Now you can possess a nice R/C Racer.



Components



Front tires: Install independent spring shock absorbent system.

Rear tires: Twist to absorb shock to enable smooth maneuverability during turns.

Install And Remove Batteries

1. Install batteries to controller:
 - a) Push open battery compartment cover in arrow direction.
 - b) Insert two "AA" batteries according to the correct polarity.
 - c) Pull to close battery cover in arrow direction.
2. Install batteries to car:
 - a) Use a cross-screwdriver to unscrew screws on chassis, open battery compartment cover, and insert two "AAA" batteries.
 - b) Reinsert battery compartment and screw down.

Methods To Operate

1. Switch power button to ON and place R/C Racer on the ground.
2. Push the controller trigger backward, the car will run forward, and vice versa. Turn the controller rudder counter clockwise, the car will go left, and vice versa.
3. To adjust the alignment of the car, twist adjustor tip on car bottom ("R" for right, "L" for left).
4. When finish playing, switch OFF and remove batteries from racer and controller, store separately.

To Consumers

1. When playing the car indoor, avoid damaging furniture or glass surface.
2. To avoid accidents happen, please do not run the car in public. Only use this product in safe outdoor environment.
3. When thundering while running the car outdoor, please stop immediately.
4. Do not run the car on puddles or sand to avoid circuit failure.
5. Do not fold the antenna incorrectly. Broken antenna may have sharp edges and cause injury.
6. Do not pull the wires from the car unit. Broken wire may result function failure.
7. When the car is revolving, do not put your hand close to it, nor put it on the hair or clothing to avoid injury.
8. Do not run the car toward others.
9. Should not drop or bump the car.
10. Store the car in cool places and away from fire.
11. This product is composed of complicated electronic devices and original parts, please do not attempt to disassemble or alter this product.
12. When batteries are low in power, the car speed will slow down or out of control. Please change the batteries.
13. When the car is out of control, it may be due to battery compartment spring distortion. Adjust spring to proper position according to diagram.
14. If the car is under pressure for a long time, the rear twist board may be deformed. Hold the rear motor and bend it to the opposite direction until the board is flat again.
15. Do not shake the box vigorously to avoid drop out of controller.
16. To enable longer life of the batteries, please follow below operations:
 - * Remove batteries when not in use;
 - * Do not mix old and new batteries; otherwise, the car runs slowly and battery life will die very soon.

Frequency And Environment

1. When there is another car of similar radio frequency operating nearby, the controller may not function.
2. When interfered by other radio-waves, the controller may not function. Try again at other location or time.
3. This product is designed to run on cement and sand polished surface. If run on wax polished surface, the car cannot move straight due to poor contact between the tires and road surface, and may spin 180 degree or pivot.



WARNING:

CHOKING HAZARD-Toy contains small parts. Not for children under 3 years.

Guangdong Alpha Animation and Culture Co., Ltd

ADD: Auldey Industrial Area, Wenguan Rd., Chenghai, Guangdong, China
 Http://www.auldey.com E-mail: auldey_imd@auldey.cn
 Tel: +86-754-5862278 Fax: +86-754-5870278
 Zip code: 515800
 Awarded Certificates of ISO9001:2000 & ISO14001:2004



Suitable for aged 3 years (37 months) above

Changes or modifications not expressly approved by the part responsible for compliance could void the user's authority to operate the equipment.

This device complies with part 15 of the FCC Rules. Operation is subject to the following two conditions: (1) This device may not cause harmful interference, and(2) this device must accept any interference received, including interference that may cause undesired operation.