

Thank you for purchasing our product —232 Real Drive Licensed R/C Car. Please read the user manual carefully before using the product, and retain the information for future reference.

CAUTION

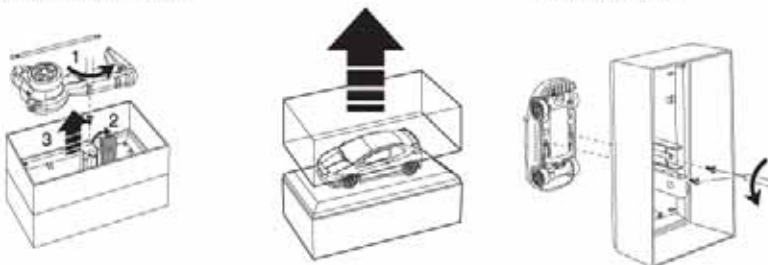
- Not-rechargeable batteries are not to be recharged;
- Rechargeable batteries are to be removed from the toy before being charged;
- Rechargeable batteries are only to be charged under adult supervision;
- Different types of batteries or new and used batteries are not to be mixed;
- Only batteries of the same or equivalent type as recommended are to be used;
- Batteries are to be inserted with the correct polarity;
- Exhausted batteries are to be removed from the toy;
- The supply terminals are not to be short-circuited;
- Do not mix old and new batteries;
- Do not mix alkaline batteries, standard (carbon-zinc) or rechargeable(Nickel-cadmium) batteries.

Functions And Specification

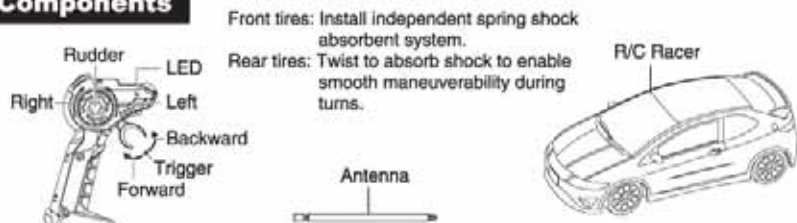
1. Scale: 1:40
2. Full Function: Forward, backward, turn left, turn right, stop;
3. Frequencies: 27MHz, 40MHz, 49MHz;
4. Batteries: 2 X "AAA" batteries for racer and 2 X "AA" for transmitter;(Battery not included)
5. Speed: 6Km/h;
6. Operating range: No less than 12m.

Racer, Controller And Antenna Release

1. Turn box up-side-down, use a cross-screwdriver to unscrew screws on base box bottom, and take out controller and antenna.
2. Lift up transparent cover.
3. Use a cross-screwdriver to unscrew car-locking screws on base box and release the car. Now you can possess a nice R/C Racer.



Components



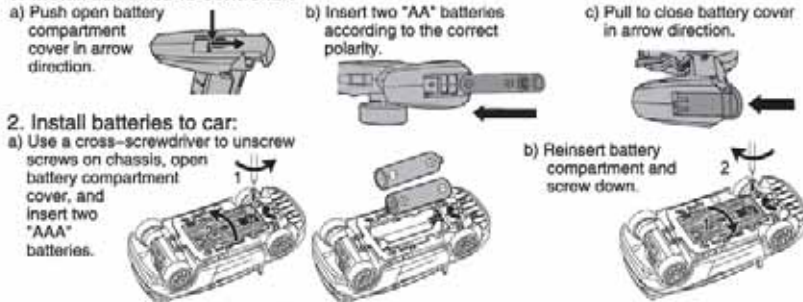
Install And Remove Batteries

1. Install batteries to controller:

- a) Push open battery compartment cover in arrow direction.
- b) Insert two "AA" batteries according to the correct polarity.
- c) Pull to close battery cover in arrow direction.

2. Install batteries to car:

- a) Use a cross-screwdriver to unscrew screws on chassis, open battery compartment cover, and insert two "AAA" batteries.
- b) Reinsert battery compartment and screw down.



Methods To Operate

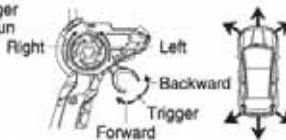
1. Switch power button to ON and place R/C Racer on the ground.



3. To adjust the alignment of the car, twist adjustor tip on car bottom ("R" for right, "L" for left).



2. Push the controller trigger backward, the car will run forward, and vice versa. Turn the controller rudder counter clockwise, the car will go left, and vice versa.



4. When finish playing, switch OFF and remove batteries from racer and controller, store separately.

To Consumers

1. When playing the car indoor, avoid damaging furniture or glass surface.
2. To avoid accidents happen, please do not run the car in public. Only use this product in safe outdoor environment.
3. When thundering while running the car outdoor, please stop immediately.
4. Do not run the car on puddles or sand to avoid circuit failure.
5. Do not fold the antenna incorrectly. Broken antenna may have sharp edges and cause injury.
6. Do not pull the wires from the car unit. Broken wire may result function failure.
7. When the car is revolving, do not put your hand close to it, nor put it on the hair or clothing to avoid injury.
8. Do not run the car toward others.
9. Should not drop or bump the car.
10. Store the car in cool places and away from fire.
11. This product is composed of complicated electronic devices and original parts, please do not attempt to disassemble or alter this product.
12. When batteries are low in power, the car speed will slow down or out of control. Please change the batteries.
13. When the car is out of control, it may be due to battery compartment spring distortion. Adjust spring to proper position according to diagram.
14. If the car is under pressure for a long time, the rear twist board may be deformed. Hold the rear motor and bend it to the opposite direction until the board is flat again.
15. Do not shake the box vigorously to avoid drop out of controller.
16. To enable longer life of the batteries, please follow below operations:
 - * Remove batteries when not in use;
 - * Do not mix old and new batteries; otherwise, the car runs slowly and battery life will die very soon.



Frequency And Environment

1. When there is another car of similar radio frequency operating nearby, the controller may not function.
2. When interfered by other radio-waves, the controller may not function. Try again at other location or time.
3. This product is designed to run on cement and sand polished surface. If run on wax polished surface, the car cannot move straight due to poor contact between the tires and road surface, and may spin 180 degree or pivot.



WARNING:

CHOKING HAZARD-Toy contains small parts. Not for children under 3 years.

Guangdong Alpha Animation and Culture Co., Ltd
Guangdong Auldey Animation & Toy Co., Ltd.

ADD: Auldey Industrial Area, Wenguan Rd., Changhai, Guangdong, China

Http://www.auldey.com E-mail: auldey_lmd@auldey.cn

Tel: +86-754-5862278 Fax: +86-754-5870278

Zip code: 515800 Awarded Certificates of ISO9001:2000 & ISO14001:2004

changes or modifications not expressly approved by the party responsible for compliance could void the user's authority to operate the equipment.



Suitable for aged 3 years (37 months) above



Phone: +86-20-38598787
FAX: +86-20-37590417
[http: // www.auldey.com](http://www.auldey.com)

NOTE:

This equipment has been tested and found to comply with the limits for a Class B digital device, pursuant to Part 15 of the FCC Rules. These limits are designed to provide reasonable protection against harmful interference in a residential installation. This equipment generates, uses and can radiate radio frequency energy and, if not installed and used in accordance with the instructions, may cause harmful interference to radio communications.

However, there is no guarantee that interference will not occur in a particular installation. If this equipment does cause harmful interference to radio or television reception, which can be determined by turning the equipment off and on, the user is encouraged to try to correct the interference by one or more of the following measures:

- Reorient or relocate the receiving antenna.
- Increase the separation between the equipment and receiver.
- Connect the equipment into an outlet on a circuit different from that to which the receiver is connected.
- Consult the dealer or an experienced radio/TV technician for help.

changes or modifications not expressly approved by the party responsible for compliance could void the user's authority to operate the equipment.

GUANGDONG ALPHA ANIMATION AND CULTURE CO., LTD.
Auldey Ind. Area,Wenguan Rd.(Central) ,Chenghai,Shantou ,Guangdong,China