



Install Guide

Version 1.00

WCF-G02

Wireless Music Player

System Requirements

Minimum System Requirements:

- Windows® XP/2000
- CPU 500MHz plus processor
- Memory Size: 128MB or above
- 50MB of available hard drive space and a wireless or Ethernet network.

Package Contents



Wireless Music Player



Remote Control



Installation CD
with
Install Guide & Manual



Standard Composite RCA
Audio Cable



Stand



CAT5 Ethernet Cable



Mini-USB Cable



12V DC Power Adapter



Using a power supply with a different
voltage rating will damage this
product and void the warranty.

If any of the above items are missing, please contact your reseller.

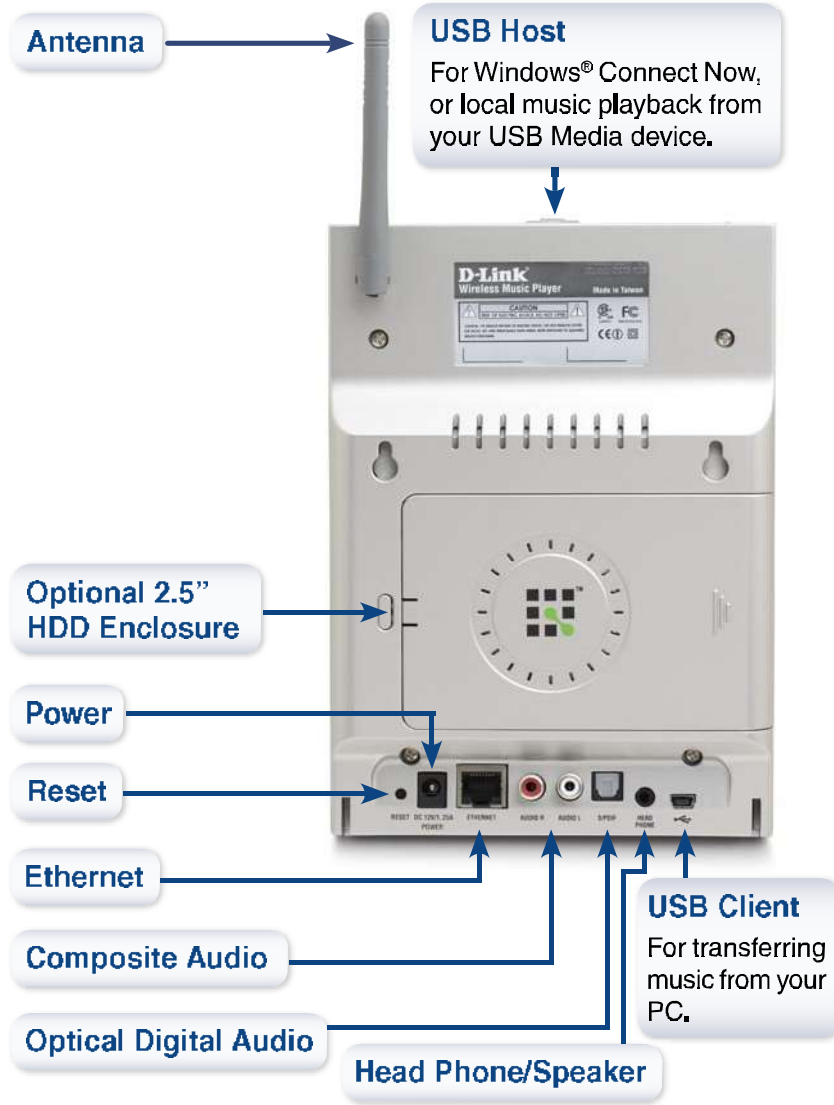
- This device complies with Part 15 of the FCC Rules. Operation is subject to the following two conditions:
 - (1) This device may not cause harmful interference, and
 - (2) this device must accept any interference received, including interference that may cause undesired operation.
- This unit is to be used with a power supply, P/N UWP01521120U or equivalent.

Hardware Overview

Front Panel



Back Panel Connections



Installing the Media Server Software

Install the Media Server Software on each PC that contains music, video, or photo files you wish to use with the WCF-G02.

Follow the steps in this section to install the software.

Insert the WCF-G02 CD-ROM into the CD-ROM drive and the following screen will appear.

Click on **Install Media Server**

If the screen on the right does not appear, go to **My Computer** and double-click on the **CD-ROM** drive. The screen at the right will appear.



The Media Server Setup Wizard will appear.

Click **Next**



Select the icons you want created.

Select **Create a desktop icon** to access the program from your desktop.

Select **Create a Quick Launch icon** to access the program from your taskbar.

Select **Create a startup icon** so the program launches on startup.



Click **Install**



Check **Launch Media Server**

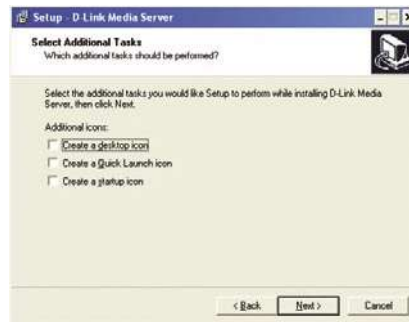
Click **Finish**

Select the icons you want created.

Select **Create a desktop icon** to access the program from your desktop.

Select **Create a Quick Launch icon** to access the program from your taskbar.

Select **Create a startup icon** so the program launches on startup.



Click **Install**

Check **Launch Media Server**



Click **Finish**

Configuring the Media Server Software

If you checked the **Launch Media Server** check box, the following screens will be displayed.

The **File Types** tab is where you select the types of audio files that you want to share.



Note: Your WCF-G02 Wireless Music Player supports MP3, WAV and WMA files.

The **Shared Folders** tab is where you select the folders that contain your audio files.



Click **Add a Folder**

Installing the Media Server Software

Install the Media Server Software on each PC that contains music, video, or photo files you wish to use with the WCF-G02.

Follow the steps in this section to install the software.

Insert the WCF-G02 CD-ROM into the CD-ROM drive and the following screen will appear.

Click on **Install Media Server**

If the screen on the right does not appear, go to **My Computer** and double-click on the **CD-ROM** drive. The screen at the right will appear.



The Media Server Setup Wizard will appear.

Click **Next**



The **Media Files** tab will show all your audio files.



Click **Close**

Connecting the WCF-G02

All audio and networking connections are located on the rear panel of the WCF-G02.

Audio Connections

Select one of three ways to connect audio to your WCF-G02:

- **Composite Audio**

Plug the supplied red and white connectors into the AUDIO R and AUDIO L (color-coded matching) jacks on the WCF-G02

Plug the opposite ends to the matching jacks on your audio system.



Back of Home Entertainment System

- **Optical Digital Audio**

Connect an optical audio connector into the S/PDIF connector on the WCF-G02, and connect the matching opposite end of the cable to the audio input of your audio system.

Note: This cable is not supplied.



Back of Home Entertainment System

- **Head Phone**

Plug a standard mini-plug head phone jack into the HEAD PHONE connector on the WCF-G02

You can also connect standard PC speakers to the head phone jack.



Note: Head Phones and Speakers are not supplied.

Network Connection

- **Wireless Connection**

If you are connecting wireless using the built-in antenna, then you do not need to connect the supplied Ethernet cable.

For an optimal wireless connection, place the antenna at a 90° angle as shown in the image to the right.



- **RJ-45 Ethernet Connector**

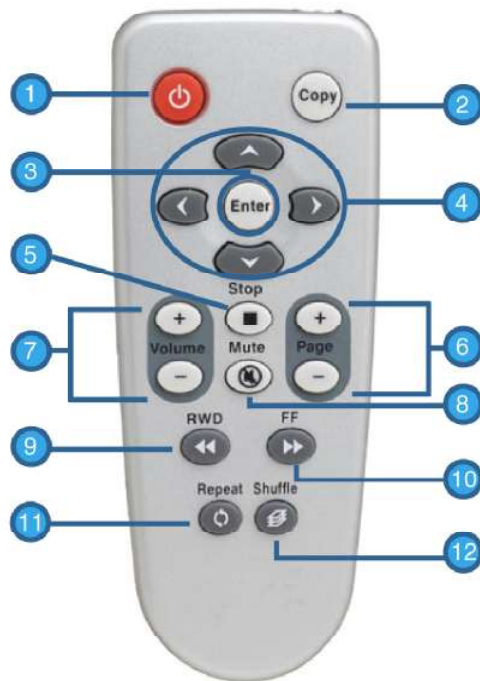
If you are connecting wired, insert the supplied Ethernet cable into the Ethernet network cable connector. Attach the other end to a router or hub on your network.



Note: You may have an Ethernet cable plugged into the unit and also connect wirelessly. Neither will interfere with the other, but only one network can be accessed at a time (wired or wireless). The network connection type is selected in the Setup Wizard and can also be changed by going to the Setup Menu. To access the Setup Menu, select **SETUP** on the menu and press Enter on the remote control.

Using the Remote Control

1. Power
2. Copy
3. Enter & Play/Pause
4. Navigation Buttons
5. Stop
6. PAGE + & -
7. VOLUME + & -
8. Mute
9. RWD
10. FF
11. Repeat
12. Shuffle



On the following pages (WCF-G02 Setup Wizard), you may be required to enter alphanumeric characters. To edit information on a screen, press the **Enter** button. To enter letters and/or numbers, use the navigation buttons (see below):

Toggle **Up** & **Down** allows you to view all alphanumeric characters.

Toggle **Left** deletes an alphanumeric character.

Toggle **Right** creates a new instance of an alphanumeric character.



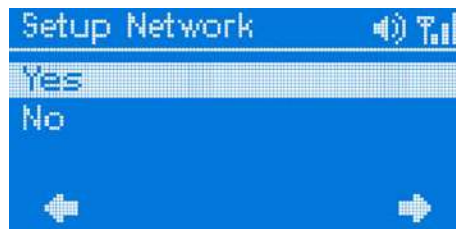
WCF-G02 Setup Wizard

Upon initial startup, the WCF-G02 displays the Setup Wizard. The Setup Wizard will guide you through the necessary steps for configuring the WCF-G02. You can also use Windows® Connect Now (WCN) to simplify the wireless setup, skip to page 21.

At the **Welcome** screen, press the right arrow button to proceed.

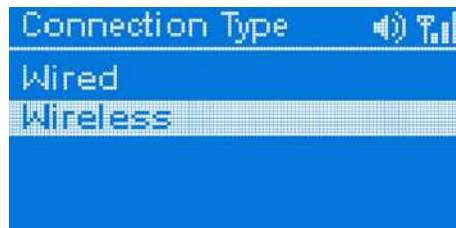


To skip the Setup Wizard, select **No**. Select **Yes** to continue.



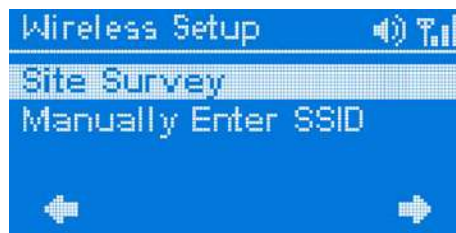
Select your network **Connection Type**.

If selecting **Wired**, skip to page 18

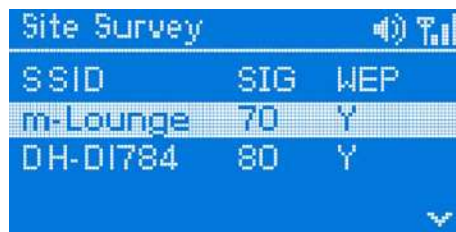


Wireless Connection

Select **Site Survey** or **Manually Enter SSID**.



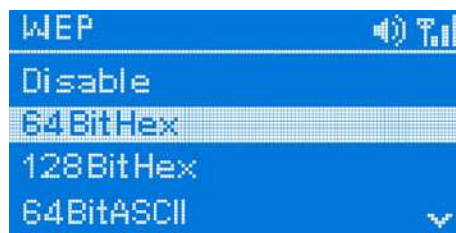
For the wireless network connection, please select the SSID of the network.



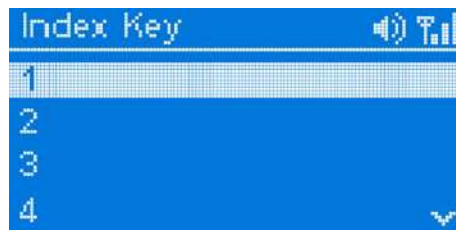
Select your **Wireless Mode**. Your options are either **Ad-Hoc** or **Infrastructure**.



Select your encryption setting. Your options are **Disable**, **64BitHEX**, **128BitHEX**, **64BitASCII**, and **128BitASCII**.



Select your **Index Key**. You can select numbers between **1** and **4**.



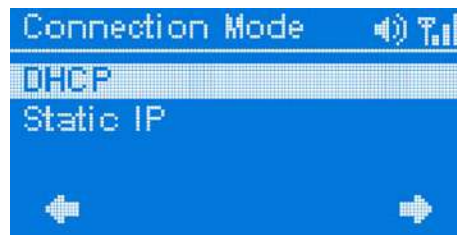
Provide a **WEP key**. The key you enter here must match the key of the wireless network exactly.



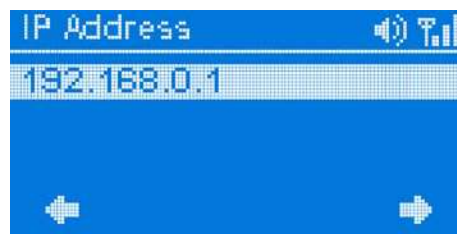
*Note: This screen is only available if you do not select **Disable** at the WEP screen.*

Connection Mode

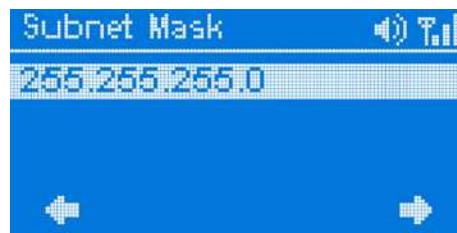
If selecting **DHCP**, skip to page 20



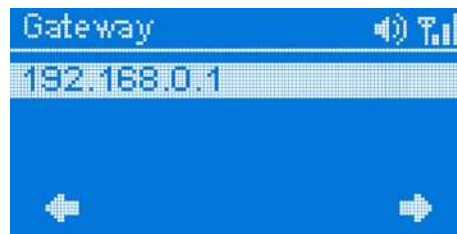
Provide an **IP Address** if you selected **Static IP**.



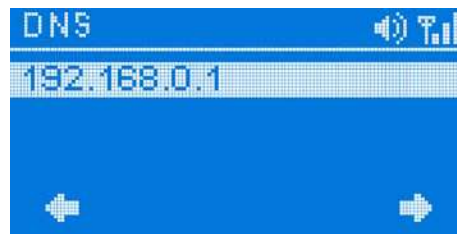
Provide a **Subnet Mask** if you selected **Static IP**.



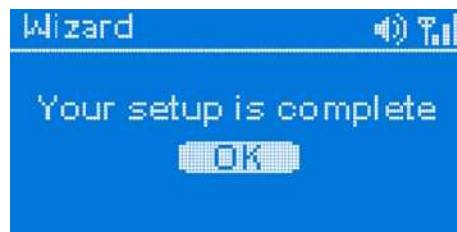
Provide a **Gateway** if you selected **Static IP**.



Provide a **DNS** if you selected **Static IP**.



Your Setup is Complete



For detailed usage instructions and information on supported file types, please refer to the User Manual that is located on the MediaLounge™ CD-ROM.

Your MediaLounge™ WCF-G02 is now ready to stream music to your home entertainment center.

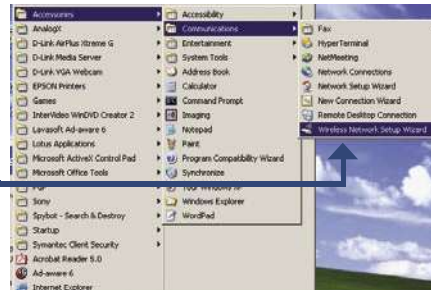
From this home screen, you can access PC Music, Local Music, or Online Music.



Configure Wireless Settings with Windows® Connect Now (WCN)

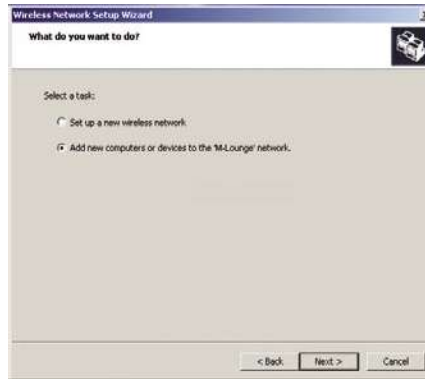
If you already have wireless settings configured on your PC, instead of using the setup wizard, you can use Windows® Connect Now (WCN) to configure the wireless settings on your WCF-G02. Note: WCN is only available on PCs running Windows® XP with Service Pack 2 installed.

Go to Start > All Programs > Accessories>Communications and click **Wireless Network Setup Wizard**.



Click **Next** to continue

Select the option to add new computers or devices to your existing wireless network.



Click **Next** to continue

Select the option **Use a USB flash drive**, to save your wireless network settings.



Click **Next** to continue

Plug your flash drive into a USB port on this computer.



Click **Next** to continue

This screen will appear when the wireless settings have been saved to the USB flash drive.

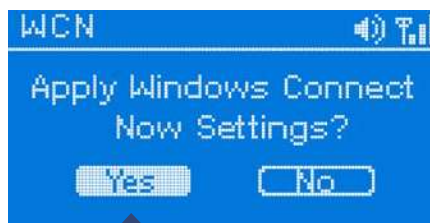


Next, remove the USB Flash Drive from your PC and insert it into the USB port on the WCF-G02, which is located on top of the unit.

The WCF-G02 will then detect your USB and scan it.



The following screen will appear on the WCF-G02 after Windows® Connect Now has been detected.



Select **Yes** to continue

The following screen will appear on the WCF-G02 when the WCN setup has completed.

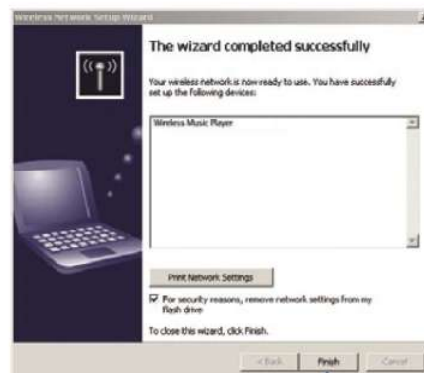


Select **OK** to continue

Next, remove the USB Flash Drive from the WCF-G02 and insert it back into the USB port on your PC.



Click **Next** to continue



Click **Finish**

**You have Completed Configuring your
Wireless Settings using WCN!**

Notes

Notes

Federal Communication Commission Interference Statement

This equipment has been tested and found to comply with the limits for a Class B digital device, pursuant to Part 15 of the FCC Rules. These limits are designed to provide reasonable protection against harmful interference in a residential installation. This equipment generates, uses and can radiate radio frequency energy and, if not installed and used in accordance with the instructions, may cause harmful interference to radio communications. However, there is no guarantee that interference will not occur in a particular installation. If this equipment does cause harmful interference to radio or television reception, which can be determined by turning the equipment off and on, the user is encouraged to try to correct the interference by one of the following measures:

- Reorient or relocate the receiving antenna.
- Increase the separation between the equipment and receiver.
- Connect the equipment into an outlet on a circuit different from that to which the receiver is connected.
- Consult the dealer or an experienced radio/TV technician for help.

This device complies with Part 15 of the FCC Rules. Operation is subject to the following two conditions: (1) This device may not cause harmful interference, and (2) this device must accept any interference received, including interference that may cause undesired operation.

FCC Caution: Any changes or modifications not expressly approved by the party responsible for compliance could void the user's authority to operate this equipment.

IMPORTANT NOTE:**FCC Radiation Exposure Statement:**

This equipment complies with FCC radiation exposure limits set forth for an uncontrolled environment. This equipment should be installed and operated with minimum distance 20cm between the radiator & your body.

This transmitter must not be co-located or operating in conjunction with any other antenna or transmitter.

IEEE 802.11b or 802.11g operation of this product in the U.S.A. is firmware-limited to channels 1 through 11.

This device is intended only for OEM integrators under the following conditions:

1. The transmitter module may not be co-located with any other transmitter or antenna.
2. This equipment should be installed and operated with minimum distance 20 cm between the radiator and user's body.

As long as condictions above are met, further transmitter test will not be required. However, the OEM integrator is still responsible for testing their end-product for any additional compliance requirements required with this module installed (for example, digital device emissions, PC peripheral requirements, etc.).

IMPORTANT NOTE: In the event that these conditions can not be met (for example certain laptop configurations or co-location with another transmitter), then the FCC authorization is no longer considered valid and the FCC ID can not be used on the final product. In these circumstances, the OEM integrator will be responsible for re-evaluating the end product (including the transmitter) and obtaining a separate FCC authorization.

End Product Labeling

The final end product must be labeled in a visible area with the following:
"Contains TX FCC ID: RRK1WCFG02VA1".

Manual Information That Must be Included

The OEM integrator has to be aware not to provide information to the end user regarding how to install or remove this RF module in the user's manual of the end product which integrate this module.

The users manual for OEM integrators must include the following information in a prominent location " IMPORTANT NOTE: To comply with FCC RF exposure compliance requirements. The antenna must not be co-located or operating in conjunction with any other antenna or transmitter.