
Hardware Overview

LEDs



POWER - The light will blink during boot up. Once solid, the access point is ready.

Brand: Alpha

Model name: AP-200B, WAP-AC24

Installation

To power the access point, you can use one of the following 3 methods:

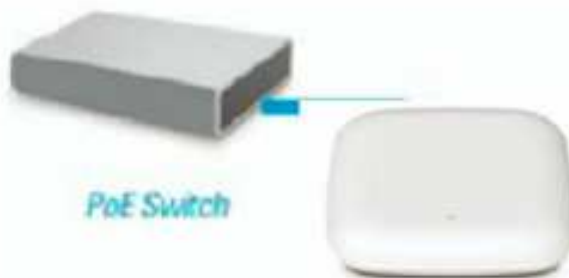
Method 1 - Use if you have a PoE switch or router.

Method 2 - Use if you do not have a PoE switch or router and do not have a power outlet near the location of the access point.

Method 3 - Use if you do not have a PoE switch or router and have a power outlet near the location of the access point.

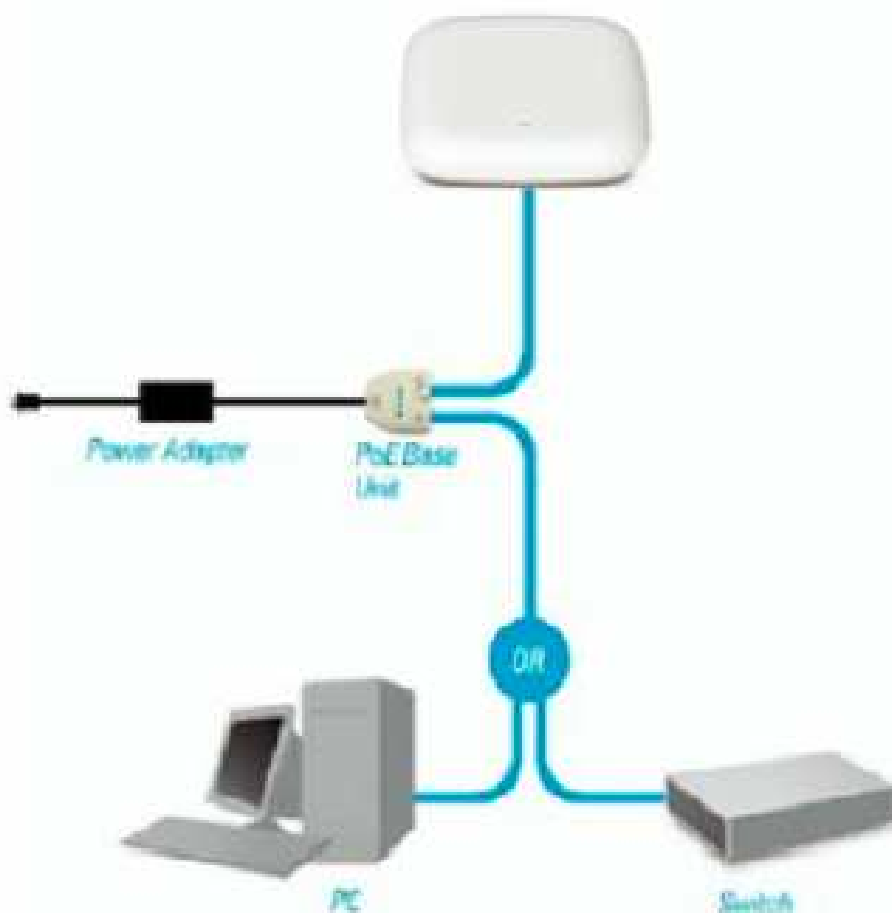
Method 1

1. Connect one end of your Ethernet cable to the LAN1 (PoE) port on the access point.
2. Connect the other end into one port on a PoE switch or router.



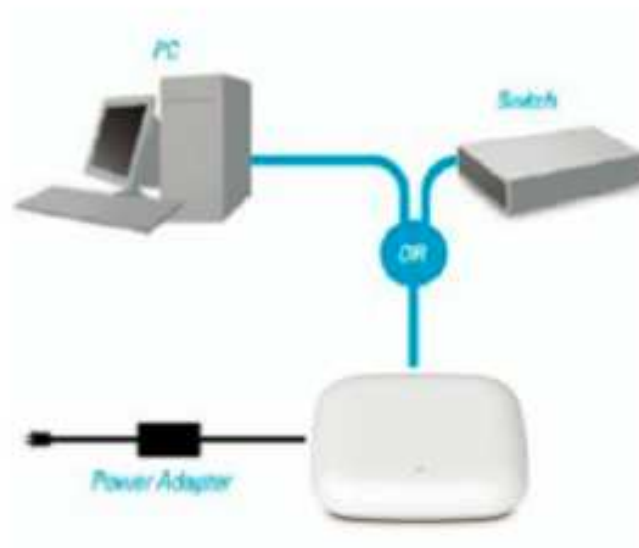
Method 2

1. Connect one end of an Ethernet cable into the **Data In** port on the PoE base unit and the other end into one port on your switch, router, or computer.
2. Connect one end of an Ethernet cable into the **P+Data Out** port on the PoE base unit and the other end into the **LAN1 (PoE)** port on the Access Point.
3. Use the supplied power adapter. Connect the power adapter to the **Power In**
4. Connect the power cable to the power adapter and then connect the other end into a power outlet.



Method 3

1. Connect one end of your Ethernet cable into the **LAN2** port on the Access Point and then connect the other end to a switch, router, or computer.
2. Use the supplied power adapter. Connect the power adapter to the Power receptor on the Access Point.
3. Connect the power cable to the power adapter and then connect the other end into a power outlet.



Configuration

Note: *It is recommended to configure your [device] before mounting. The easiest way is to connect to the Access Point directly to a computer using an Ethernet cable. Statically assign the IP address of your computer to 192.168.0.2 with a subnet mask of 255.255.255.0.*

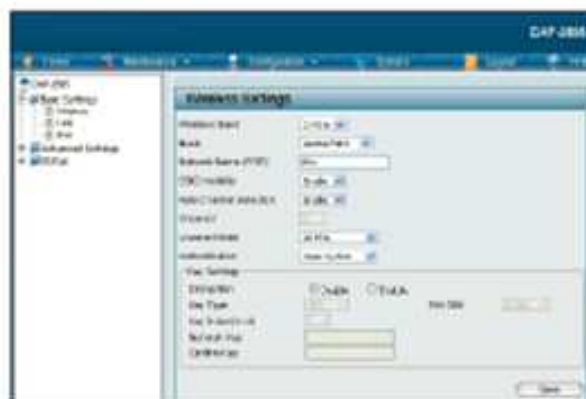
Step 1: Open a web browser (e.g., Internet Explorer, Chrome, Firefox, or Safari) and enter <http://192.168.0.50>.



Step 2: At the login screen, enter admin for the user name and leave the password blanks. Click **Login** to continue.



Step 3: After the home page appears, go to **Basic Settings > LAN** to change the IP settings of the [device]. Go to **Basic Settings > Wireless** to configure your wireless settings.



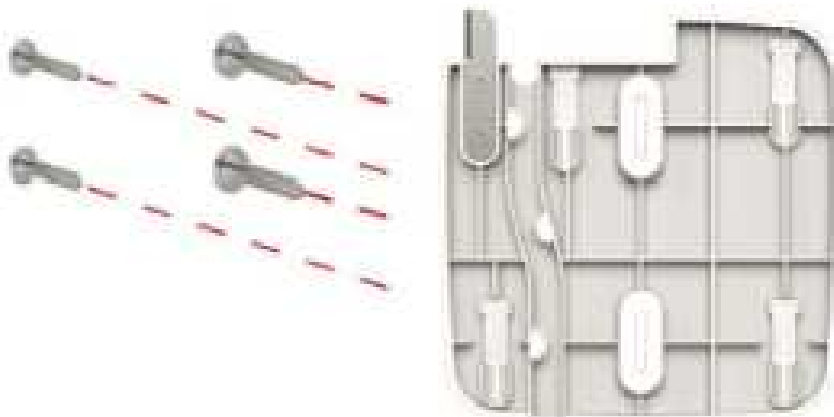
Note: *Make sure you click on Configuration > Save and Activate to save your settings.*

Mounting

Step 1: Insert the provided wall anchors in the wall where the mounting plate will be attached.



Step 2: Use the provided screws to secure the mounting plate on the wall.



Federal Communication Commission Interference Statement

This device complies with Part 15 of the FCC Rules. Operation is subject to the following two conditions:

- (1) This device may not cause harmful interference, and
- (2) this device must accept any interference received, including interference that may cause undesired operation.

This equipment has been tested and found to comply with the limits for a Class B digital device, pursuant to Part 15 of the FCC Rules. These limits are designed to provide reasonable protection against harmful interference in a residential installation. This equipment generates, uses and can radiate radio frequency energy and, if not installed and used in accordance with the instructions, may cause harmful interference to radio communications. However, there is no guarantee that interference will not occur in a particular installation. If this equipment does cause harmful interference to radio or television reception, which can be determined by turning the equipment off and on, the user is encouraged to try to correct the interference by one of the following measures:

- Reorient or relocate the receiving antenna.
- Increase the separation between the equipment and receiver.
- Connect the equipment into an outlet on a circuit different from that to which the receiver is connected.
- Consult the dealer or an experienced radio/TV technician for help.

FCC Caution: Any changes or modifications not expressly approved by the party responsible for compliance could void the user's authority to operate this equipment.

This transmitter must not be co-located or operating in conjunction with any other antenna or transmitter.

Operations in the 5.15-5.25GHz band are restricted to indoor usage only.

This equipment complies with FCC radiation exposure limits set forth for an uncontrolled environment. This equipment should be installed and operated with minimum distance 22cm between the radiator & your body.