



Super G Wireless Broadband Router

Model # AR430W

Quick Installation Guide

Section 1

This Quick Installation Guide only provides the basic instructions. For more detailed information, please refer to the User's Manual in the supplied CD.

Connecting the Router

Note: Prior to connecting the router, be sure to power off your computer, DSL/Cable modem, and the router. You should setup the router with a wired connection first before attempting to setup any wireless connection.

Step 1 Connect one end of a network cable to the **WAN** port of the router and connect the other end of the cable to the DSL/Cable modem.

Step 2 With another network cable, connect one end of the cable to your computer's network card and connect the other end to one of the **LAN** (Ethernet) ports of the router.

Step 3 Power on the DSL/Cable modem and wait for the lights on the modem to settle down.

Step 4 Power on the router by connecting one end of the supplied power adapter to the power jack of the router and connecting the other end to an electrical outlet.

Step 5 Power on your computer.

Step 6 Make sure the **WAN**, **WLAN**, and the **LAN** port that the computer is connected to are lit. If not try the above steps again.



Section 2

Verifying Connection to the Router

Step 1 Go to **Start, Run**, type **command** (for Windows 95/98/ME) or **cmd** (for Windows 2000/XP) and click **OK**. You will see the command prompt as below.

Step 2 Type **ping 192.168.1.1** and press **Enter**. You should get four reply responses back.

```
C:\WINDOWS\System32\cmd.exe
Microsoft Windows XP [Version 5.1.2600]
(C) Copyright 1985-2001 Microsoft Corp.

C:\Documents and Settings\Owner>ping 192.168.1.1
Pinging 192.168.1.1 with 32 bytes of data:
Reply from 192.168.1.1: bytes=32 time<1ms TTL=255
Reply from 192.168.1.1: bytes=32 time=1ms TTL=255
Reply from 192.168.1.1: bytes=32 time<1ms TTL=255
Reply from 192.168.1.1: bytes=32 time=1ms TTL=255

Ping statistics for 192.168.1.1:
    Packets: Sent = 4, Received = 4, Lost = 0 (0% loss),
    Approximate round trip times in milli-seconds:
        Minimum = 0ms, Maximum = 1ms, Average = 0ms

C:\Documents and Settings\Owner>_
```

Step 3 If you get **Request timed out**, or **Destination host unreachable**, double-check the network cable connection between the computer and the router and try **Step 2** again. If you still encounter problem, go to the next step; otherwise proceed to **Section 3, Configure the Router**.

Step 4 For Windows 2000/XP, type **ipconfig/release** and press **Enter**.

```
C:\WINDOWS\System32\cmd.exe
Microsoft Windows XP [Version 5.1.2600]
(C) Copyright 1985-2001 Microsoft Corp.

C:\Documents and Settings\Owner>ipconfig/release
Windows IP Configuration

Ethernet adapter Local Area Connection:

    Connection-specific DNS Suffix  . :
    IP Address . . . . . : 0.0.0.0
    Subnet Mask . . . . . : 0.0.0.0
    Default Gateway . . . . . :

C:\Documents and Settings\Owner>
```

Step 5 Type **ipconfig/renew** and press **Enter**. You should get an IP address of **192.168.1.x** (where **x** is a number between 2 - 254). Proceed to **Section 3, Configure the Router**. If you don't get an IP address, reset the router by holding in the reset button at the back of the router for 10 seconds while it is ON and try **ipconfig/renew** again.

```
C:\WINDOWS\System32\cmd.exe
Microsoft Windows XP [Version 5.1.2600]
(C) Copyright 1985-2001 Microsoft Corp.

C:\Documents and Settings\Owner>ipconfig/renew
Windows IP Configuration

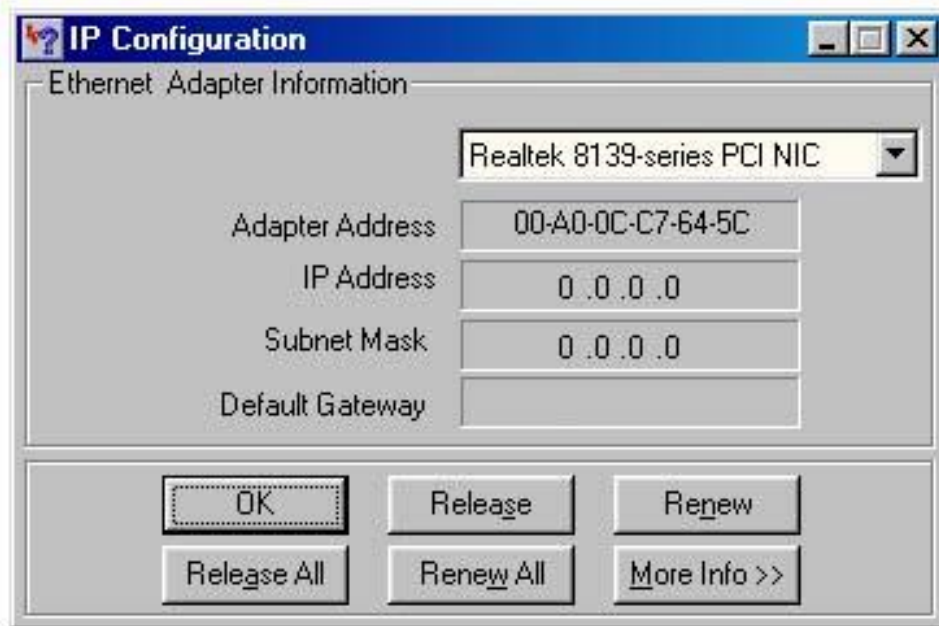
Ethernet adapter Local Area Connection:

    Connection-specific DNS Suffix  . :
    IP Address . . . . . : 192.168.1.5
    Subnet Mask . . . . . : 255.255.255.0
    Default Gateway . . . . . : 192.168.1.1

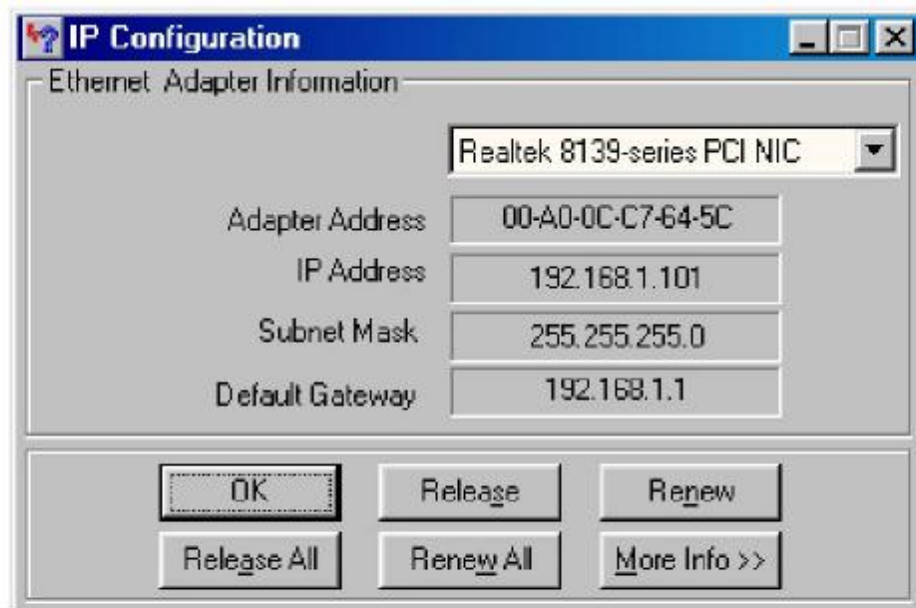
C:\Documents and Settings\Owner>
```

Step 6 For Windows 95/98/ME go to **Start, Run**, type **wiipcfg** and click **OK**.

Step 7 Select your network card from the drop-down menu and click **Release**.



Step 8 After your IP address is released, click **Renew**. You should get an IP address of **192.168.1.x** (where **x** is a number between 2 - 254). If you don't get an IP address, reset the router by holding in the reset button at the back of the router for 10 seconds while it is ON and try **Renew** again.

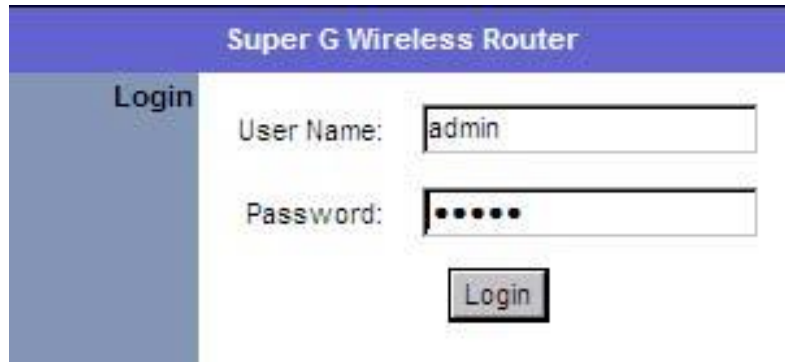


Section 3

Configuring the Router

Step 1 Open the web browser and type **192.168.1.1** in the URL Address field and press **Enter**.

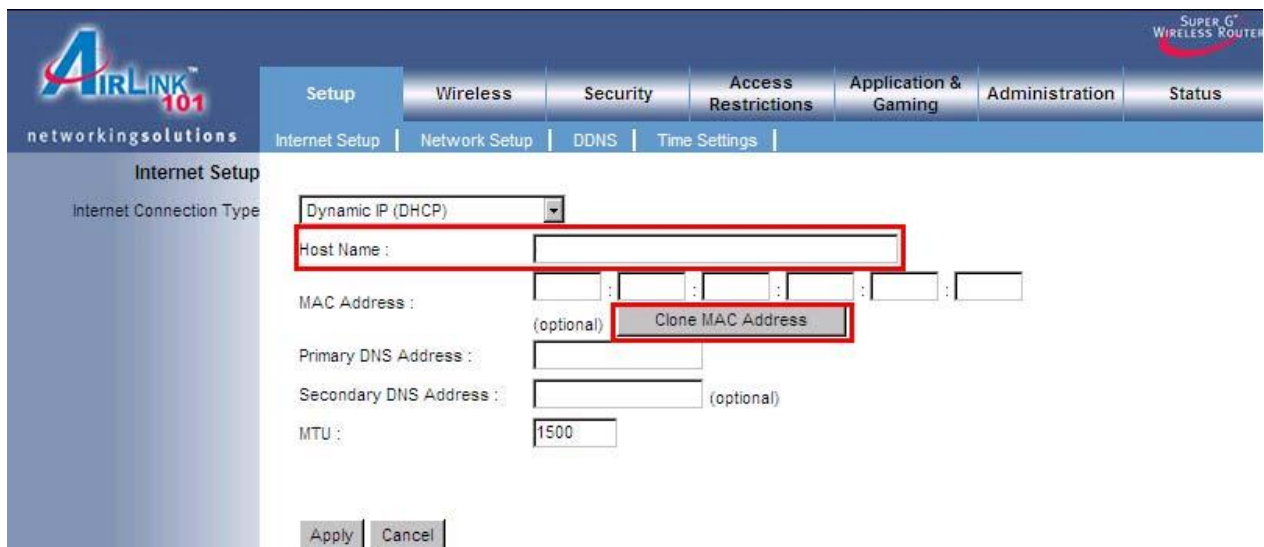
Step 2 Enter **admin** for both username and password fields and click **OK**.



Cable Modem

For most cable modem users, you should be able to connect to the Internet without any configuration. If your ISP has provided you with a host name, enter it in the optional **Host Name** field.

If your ISP requires a registered MAC Address, click on the **Clone MAC Address** button. Click **Apply** and **OK** to save the setting.

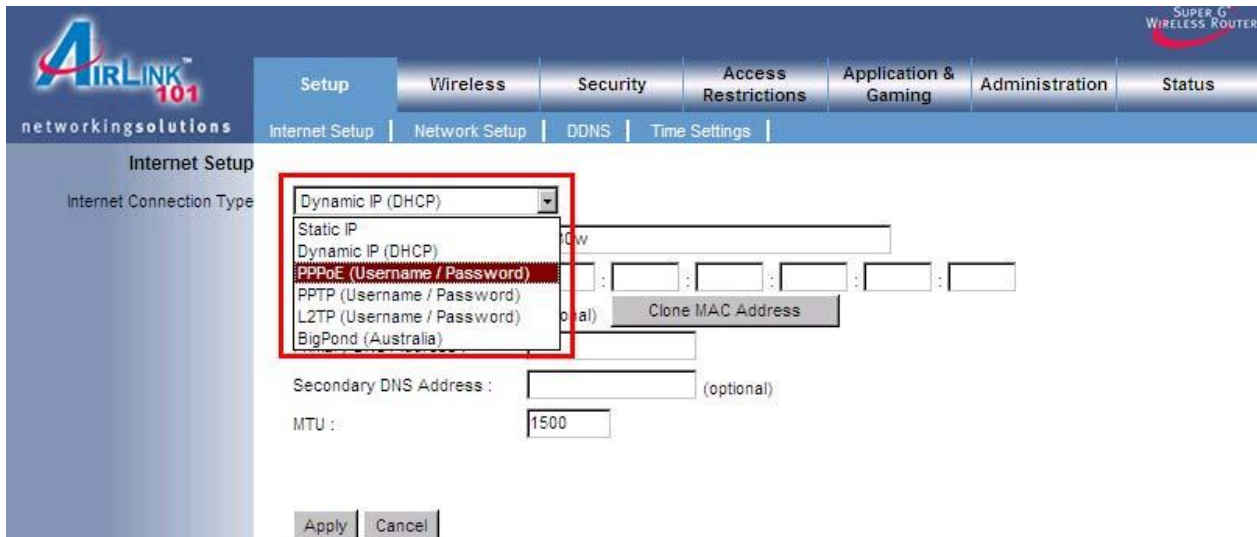


If you have trouble connecting to the Internet, please refer to the **Troubleshooting** section at the end of this guide.

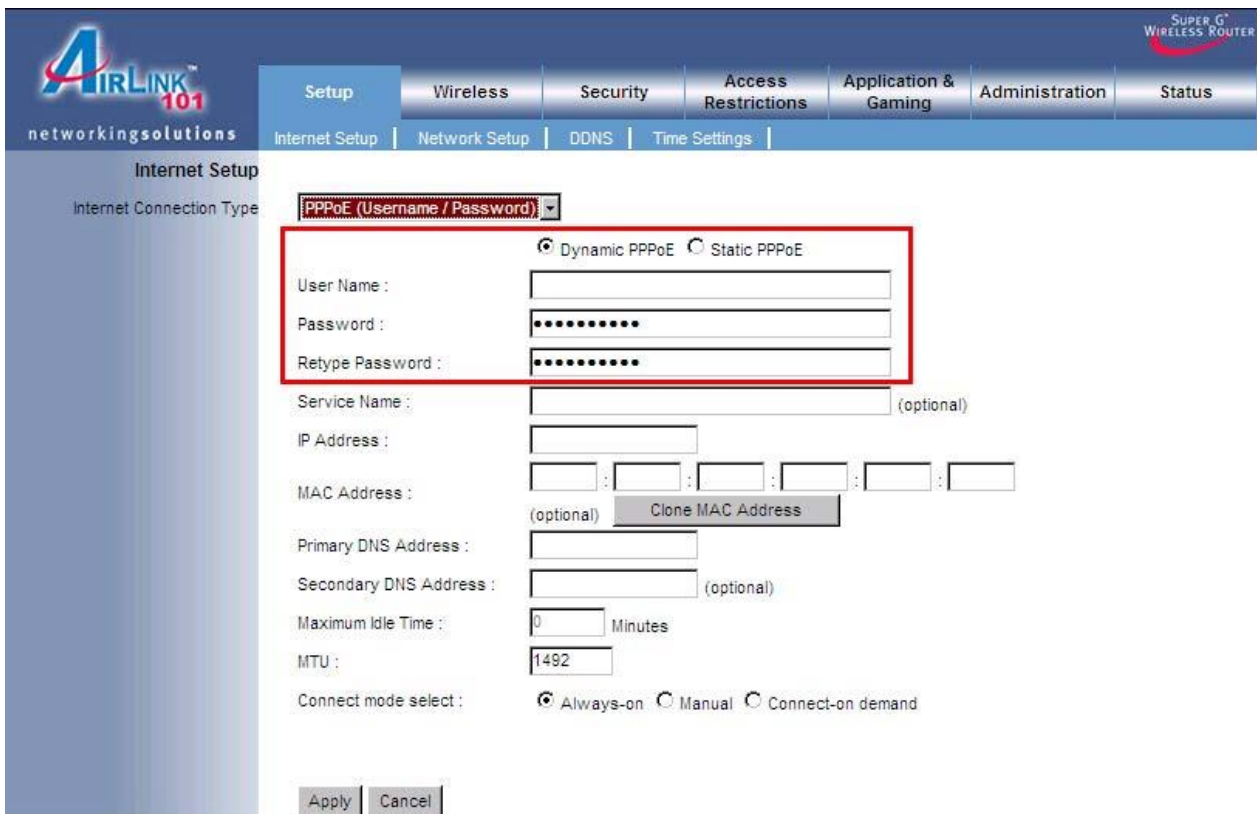
DSL

For DSL users, follow the steps below to configure the router. **Step 1**

Select **PPPoE** from the drop-down menu.



Step 2 Enter your username and password provided by your ISP.



Note: Depending on the ISP, you may need to include the domain name with your username.

Example: username@sbcglobal.net **Step 3** Click **Apply** and **OK** to save the setting. If you have trouble connecting to the Internet, please refer to the **Troubleshooting** section at

the end of this installation guide.

Section 4

Connecting the Router Wirelessly

Below are the default wireless settings of the router. You must configure your wireless network card to the same settings in order to establish a wireless connection to the router. Please refer to your wireless network card's manual on how to configure these settings.

SSID: **default** Operating Mode: **Infrastructure** Authentication: **Open System** Channel #: **6** WEP: **disabled**

If you want to change the router's wireless settings, log in to the router and select the **Wireless** tab. Be sure to click **Apply** and **OK** to save the setting.



The screenshot shows the web interface of an Airlink 101 router. The top navigation bar includes tabs for Setup, **Wireless** (highlighted with a red box), Security, Access Restrictions, Application & Gaming, Administration, and Status. Below this is a sub-menu with Basic Wireless Settings, Wireless Security, Wireless MAC Filter, and Advanced Wireless Settings. The main content area is titled 'Wireless Network' and 'Wireless-G Settings'. It contains the following settings:

Mode:	Mixed(g/b)
Network Name (SSID):	default
Channel:	6-2.437GHz
SSID Broadcast:	Enable

At the bottom of the settings area are 'Apply' and 'Cancel' buttons.

For information on changing the router's log in password and enabling wireless encryption, please refer to the User's Manual in the provided CD.

Section 5

Troubleshooting

If you have trouble connecting to the Internet, try the following steps.

Step 1 Power off the Cable/DSL modem, router, and computer and wait for **5 minutes**.

Step 2 Turn on the Cable/DSL modem and wait for the lights on the modem to settle down.

Step 3 Turn on the router and wait for the lights on the router to settle down.

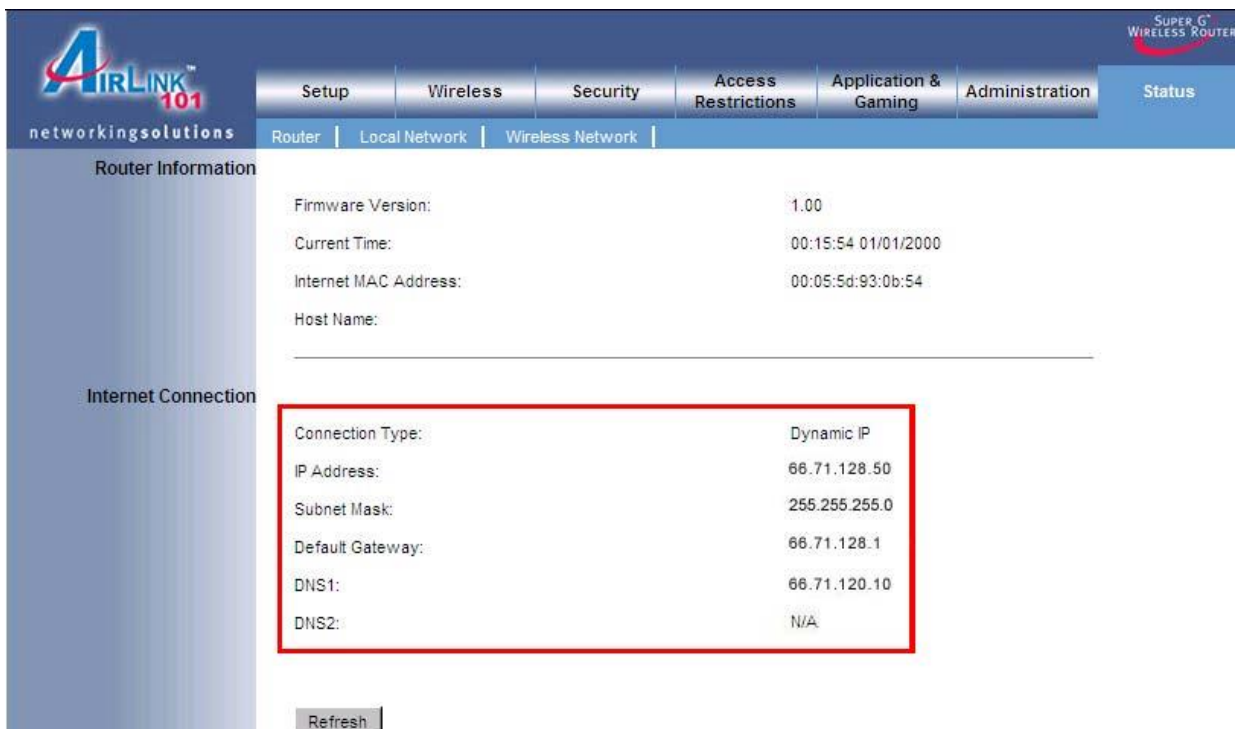
Step 4 Turn on the computer.

Step 5 Reconfigure the router as described in **Section 3**.

Step 6 Log in to the router and select the **Status** tab.

Step 7 Verify that the **IP Address**, **Default Gateway**, and at least one of the **DNS** fields

have valid numbers assigned to them (instead of all 0's).



The screenshot displays the web interface of an Airlink 101 Super G Wireless Router. The top navigation bar includes tabs for Setup, Wireless, Security, Access Restrictions, Application & Gaming, Administration, and Status. The Status tab is selected, and the 'Wireless Network' sub-tab is active. The page is divided into two main sections: Router Information and Internet Connection. The Internet Connection section is highlighted with a red box, showing the following details:

Connection Type:	Dynamic IP
IP Address:	66.71.128.50
Subnet Mask:	255.255.255.0
Default Gateway:	66.71.128.1
DNS1:	66.71.120.10
DNS2:	N/A

A 'Refresh' button is located below the Internet Connection details.

If each field has a valid number assigned, the router is connected to the Internet.

Section 6

Federal Communication Commission Interference Statement

This equipment has been tested and found to comply with the limits for a Class B digital device, pursuant to Part 15 of the FCC Rules. These limits are designed to provide reasonable protection against harmful interference in a residential installation. This equipment generates, uses and can radiate radio frequency energy and, if not installed and used in accordance with the instructions, may cause harmful interference to radio communications. However, there is no guarantee that interference will not occur in a particular installation. If this equipment does cause harmful interference to radio or television reception, which can be determined by turning the equipment off and on, the user is encouraged to try to correct the interference by one of the following measures:

Reorient or relocate the receiving antenna.

Increase the separation between the equipment and receiver.

Connect the equipment into an outlet on a circuit different from that to which the receiver is connected.

Consult the dealer or an experienced radio/TV technician for help.

This device complies with Part 15 of the FCC Rules. Operation is subject to the following two conditions: (1) This device may not cause harmful interference, and (2) this device must accept any interference received, including interference that may cause undesired operation.

FCC Caution: Any changes or modifications not expressly approved by the party responsible for compliance could void the user's authority to operate this equipment.

IMPORTANT NOTE:

FCC Radiation Exposure Statement:

This equipment complies with FCC radiation exposure limits set forth for an uncontrolled environment. This equipment should be installed and operated with minimum distance 20cm between the radiator & your body.

This transmitter must not be co-located or operating in conjunction with any other antenna or transmitter.

IEEE 802.11b or 802.11g operation of this product in the U.S.A. is firmware-limited to channels 1 through 11.

Industry Canada Statement

Operation is subject to the following two conditions:

- 1) this device may not cause interference and
- 2) this device must accept any interference, including interference that may cause undesired operation of the device

This device has been designed to operate with an antenna having a maximum gain of 2dBi.

Antenna having a higher gain is strictly prohibited per regulations of Industry Canada. The required antenna

impedance is 50 ohms.

To reduce potential radio interference to other users, the antenna type and its gain should be so chosen that the EIRP is not more than required for successful communication.

Technical Support

E-mail: support@airlink101.com Toll Free: 1-888-746-3238 Web Site: www.airlink101.com

*Super G™ technology (108 Mbps) can only be obtained when using products with Atheros Super G™ chipset

*Theoretical maximum wireless signal rate based on IEEE standard 802.11g specifications. Actual data throughput will vary. Network conditions and environmental factors, including volume of network traffic, building materials and construction, mix of wireless products used, radio frequency interference (e.g., cordless telephones and microwaves) as well as network overhead lower actual data throughput rate. Copyright © 2007 AirLink101. All rights reserved. AirLink101, the stylized AirLink101 logo, specific product designations, and all other words and logos that are identified as trademarks and/or service marks are, unless noted otherwise, the trademarks and service marks of AirLink101. All other product or service names are the property of their respective holders. AirLink101 products are protected under numerous U.S. and foreign patents and pending applications, mask work rights, and copyrights.