

**NEC**

*Projector*

***M402W***

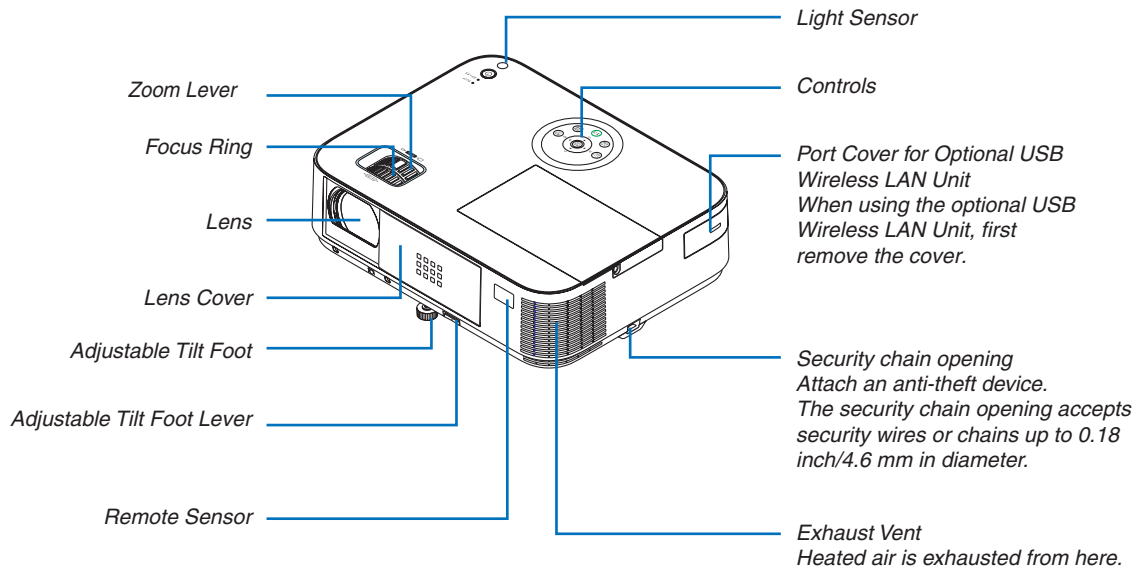
---

*User's Manual*

---

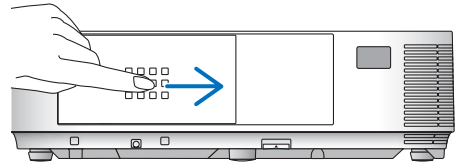
## Part Names of the Projector

### Front/Top

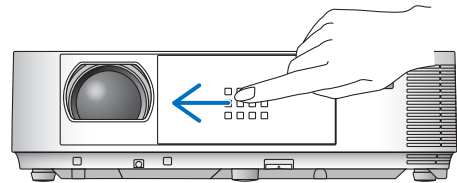


### Opening and closing the lens cover

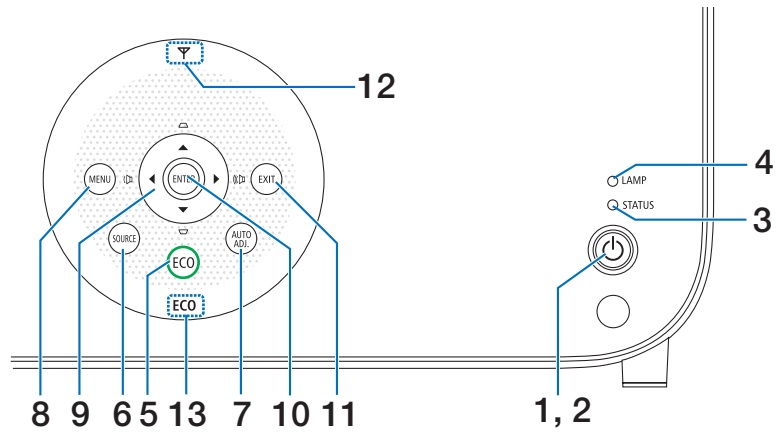
Slide the lens cover to the right to uncover the lens.



To cover the lens, slide the lens cover to the left.

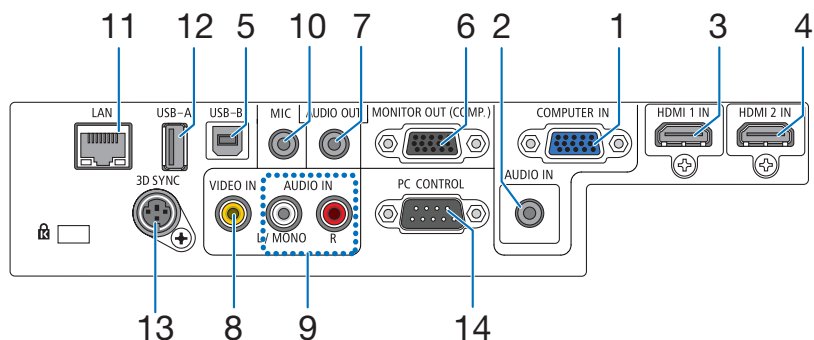


## Top Features



- |  |   |
|--|---|
| <ol style="list-style-type: none"> <li>1.  (POWER) Button</li> <li>2. POWER Indicator</li> <li>3. STATUS Indicator</li> <li>4. LAMP Indicator</li> <li>5. ECO Button</li> <li>6. SOURCE Button</li> <li>7. AUTO ADJ. Button</li> <li>8. MENU Button</li> </ol> | <ol style="list-style-type: none"> <li>9.  / Volume Buttons  / Keystone Buttons</li> <li>10. ENTER Button</li> <li>11. EXIT Button</li> <li>12. Wireless LAN Indicator (  )<br/>When the projector is turned on with the optional wireless LAN unit inserted, the indicator will light up blue.</li> <li>13. ECO Indicator<br/>When [ECO MODE] is set to the other options than [OFF], this indicator will light up green.</li> </ol> |
|--|---|

## Terminals Features



- |  |   |
|--|---|
| <ul style="list-style-type: none"> <li>1. COMPUTER IN/ Component Input Connector (Mini D-Sub 15 Pin)</li> <li>2. COMPUTER AUDIO IN Mini Jack (Stereo Mini)</li> <li>3. HDMI 1 IN Connector (Type A)</li> <li>4. HDMI 2 IN Connector (Type A)</li> <li>5. USB-B Port (Type B)</li> <li>6. MONITOR OUT (COMP.) Connector (Mini D-Sub 15 Pin)</li> <li>7. AUDIO OUT Mini Jack (Stereo Mini)</li> <li>8. VIDEO IN Connector (RCA)</li> </ul> | <ul style="list-style-type: none"> <li>9. VIDEO AUDIO IN L/MONO, R (RCA)</li> <li>10. MIC Input Jack (Monaural Mini)</li> <li>11. LAN Port (RJ-45)</li> <li>12. USB-A Port (Type A)</li> <li>13. 3D SYNC (Mini DIN 4 Pin))</li> <li>14. PC CONTROL [PC CONTROL] Port (D-Sub 9 Pin)<br/>Use this port to connect a PC or control system. This enables you to control the projector using serial communication protocol.</li> </ul> |
|--|---|

---

## Operating Environment for Software Included on CD-ROM

Names and Features of Bundled Software Programs

Name of software program	Features
Virtual Remote Tool (Windows only)	This is a software program used to control the power ON/OFF and source selection of the projector from your computer by using the supplied computer cable (VGA) and others.

Name of software program	Features
Image Express Utility Lite	<ul style="list-style-type: none"><li>• This is a software program used to project your computer's screen or sound from the computer over the USB cable or the wired/wireless network. The computer cable (VGA) is not required.</li><li>• This software program can be used to control the power ON/OFF and source selection of the projector from your computer.</li><li>• The Geometric Correction Tool (GCT) function allows you to correct distortion of images projected on a curved wall.</li></ul>
Image Express Utility Lite for Mac OS	<ul style="list-style-type: none"><li>• This is a software program used to project your computer's screen over the wired/wireless network. The computer cable (VGA) is not required.</li><li>• This software program can be used to control the power ON/OFF and source selection of the projector from your computer. * "Audio transmission", "USB Display", and "GCT" functions are not supported by Mac.</li></ul>

Name of software program	Features
PC Control Utility Pro 4 PC Control Utility Pro 5 (for Mac OS)	This is a software program used to operate the projector from the computer when the computer and the projector are connected with LAN (wired or wireless) or a serial cable.

---

**NOTE:**

- Image Express Utility Lite does not support "Meeting Mode" in Image Express Utility 2.0 included with our other models.
- 

### Download service

For the update information about these software programs, visit our website:

URL: <http://www.nec-display.com/dl/en/index.html>

## Operating Environment

The following is the operating environment for Image Express Utility Lite. For the operating environment of other software program, refer to the help function of each software program.

### [Windows]

Supported OS	<p>Windows 8 (Core Edition)          Windows 8 Pro          Windows 8 Enterprise          Windows 7 Home Basic          Windows 7 Home Premium          Windows 7 Professional          Windows 7 Ultimate          Windows 7 Enterprise          Windows Vista Home Basic          Windows Vista Home Premium          Windows Vista Business          Windows Vista Ultimate          Windows Vista Enterprise          Windows XP Home Edition (32-bit version) Service Pack 3 or later          Windows XP Professional (32-bit version) Service Pack 3 or later</p> <ul style="list-style-type: none"> <li>• Windows power-saving function is not supported.</li> <li>• To use the audio transfer capability, Windows 8/Windows 7/Windows Vista Service Pack 1 or later is required.</li> </ul>
Processor	<ul style="list-style-type: none"> <li>• Windows 8/Windows 7/Windows Vista              Pentium M 1.2 GHz equivalent or higher required              Dual core 1.5 GHz or higher recommended</li> <li>• Windows XP              Pentium M 1.0 GHz equivalent or higher required              Dual core 1.0 GHz or higher recommended</li> </ul>
Memory	<ul style="list-style-type: none"> <li>• Windows 8/Windows 7/Windows Vista              512 MB or more required              1 GB or more recommended</li> <li>• Windows XP              256 MB or more required              512 MB or more recommended              * More memory may be required to run additional applications simultaneously.</li> </ul>
Graphic processor	<ul style="list-style-type: none"> <li>• Windows 8/Windows 7/Windows Vista              The "Graphics" score 3.0 or more of "Windows Experience Index" recommended.</li> </ul>
Network environment	<p>TCP/IP-compatible wired LAN or wireless LAN</p> <ul style="list-style-type: none"> <li>* Use a wireless LAN unit complying with the Wi-Fi standard.</li> <li>* Audio transfer capability requires 3 Mbps or more throughput.</li> </ul>
Resolution	<ul style="list-style-type: none"> <li>• Windows 8/Windows 7/Windows Vista              SVGA (800 × 600) or higher required              The same as the projector is recommended</li> <li>• Windows XP              VGA (640 × 480) or higher required              The same as the projector is recommended</li> </ul>
Screen Colors	<p>High Color (15 bits, 16 bits)          True Color (24 bits, 32 bits) (recommended)</p> <ul style="list-style-type: none"> <li>• 256 or fewer colors are not supported.</li> </ul>

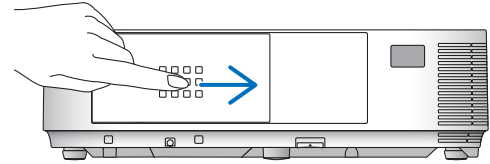
---

**[Mac]**

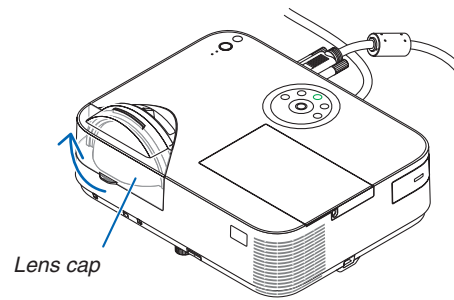
Supported OS	Mac OS X v10.6, v10.7, v10.8
Processor (CPU)	Intel® Core™ Duo processor 1.5 GHz or higher required Intel® Core™ 2 Duo processor 1.6 GHz or higher recommended * PowerPC® is not supported
Memory	512 MB or higher required
Network environment	Wired or wireless LAN required that supports TCP/IP * The following LAN adapters are verified to work with Image Express Utility Lite: <ul style="list-style-type: none"><li>• Wired LAN adapter built into Mac</li><li>• Wireless LAN adapter built into Mac</li><li>• Apple USB Ethernet adapter</li><li>• Apple Thunderbolt Ethernet adapter</li></ul> “Easy Connection” supports only wireless LAN.
Resolution	SVGA (800 × 600) or higher required The same as the projector is recommended
Screen Colors	16.70 million colors required

# Turning on the Projector

1. Slide the lens cover to the right to uncover the lens.

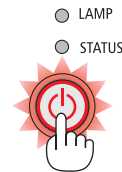


1. Remove the lens cap.



2. Press the  (POWER) button on the projector cabinet or the POWER ON button on the remote control.

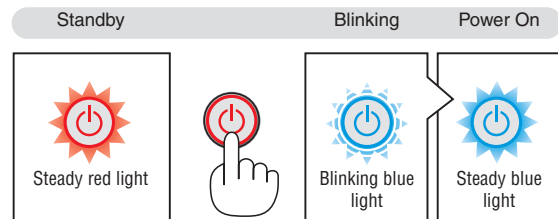
The POWER indicator will turn to blue and the projector will become ready to use.



TIP:

- When the message “Projector is locked! Enter your password.” is displayed, it means that the [SECURITY] feature is turned on.

After you turn on your projector, ensure that the computer or video source is turned on and that the lens cover is open.





## Selecting a Source

### Selecting the computer or video source

NOTE: Turn on the computer or video source equipment connected to the projector.

### Detecting the Signal Automatically

Press the SOURCE button once. The projector will search for the available input source and display it. The input source will change as follows:

COMPUTER → HDMI1 → HDMI2 → VIDEO → USB-A → LAN → USB-B → COMPUTER → ...

- With the SOURCE screen displayed, you can press the SOURCE button a few times to select the input source.

TIP: If no input signal is present, the input will be skipped.

### Using the Remote Control

Press any one of the COMP1, HDMI1, HDMI2, VIDEO, USB-A, LAN, or USB-B buttons.

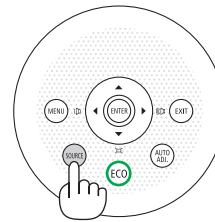
### Selecting Default Source

You can set a source as the default source so that it will be displayed each time the projector is turned on.

1. **Press the MENU button.**  
*The menu will be displayed.*
2. **Press the ► button twice to select [SETUP] and press the ▼ button or the ENTER button to select [GENERAL].**
3. **Press the ► button four times to select [OPTIONS(2)].**
4. **Press the ▼ button five times to select [DEFAULT SOURCE SELECT] and press the ENTER button.**  
*The [DEFAULT SOURCE SELECT] screen will be displayed.*
5. **Select a source as the default source, and press the ENTER button.**
6. **Press the EXIT button a few times to close the menu.**
7. **Restart the projector.**  
*The source you selected in step 5 will be projected.*

TIP:


- When the projector is in Standby mode, applying a computer signal from a computer connected to the COMPUTER IN input will power on the projector and simultaneously project the computer's image. ([AUTO POWER ON(COMP.)])
- On Windows 7, a combination of the Windows and P keys allows you to set up external display easily and quickly.



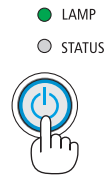
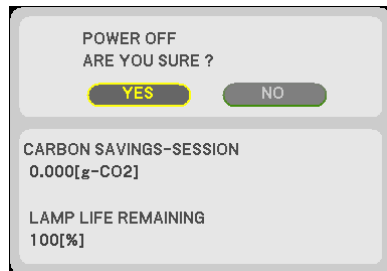
---

## Turning off the Projector

To turn off the projector:

1. First, press the  (POWER) button on the projector cabinet or the STANDBY button on the remote control.

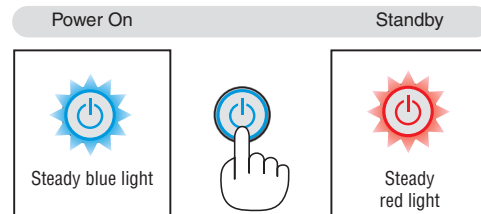
The confirmation message will be displayed.



2. Secondly, press the ENTER button or press the  (POWER) or the STANDBY button again.

After the projector turns off, the cooling fans keep operating for a while (Cooling-off time).

The cooling fans stop operating when the projector turns off and goes into standby mode. When in standby mode, the POWER indicator will light red and the STATUS indicator will light green approx. for 10 seconds and then will light off when [NORMAL] is selected for [STANDBY MODE].



### CAUTION:

Parts of the projector may become temporarily heated if the projector is turned off with the POWER button or if the AC power supply is disconnected during normal projector operation. Use caution when picking up the projector.

### NOTE:

- While the power indicator is blinking blue in short cycles, the power cannot be turned off.
- You cannot turn off the power for 60 seconds immediately after turning it on and displaying an image.
- Do not disconnect the AC power supply to the projector within 10 seconds of making adjustment or setting changes and closing the menu. Doing so can cause loss of adjustments and settings.

---

## Using the Computer Cable (VGA) to Operate the Projector (Virtual Remote Tool)

Using the utility software “Virtual Remote Tool” included on the companion NEC Projector CD-ROM, Virtual Remote screen (or toolbar) can be displayed on your computer screen.

This will help you perform operations such as projector’s power on or off and signal selection via the computer cable (VGA), serial cable, or LAN connection.

### Control Functions

Power On/Off, signal selection, picture freeze, picture mute, audio mute, and remote control operation on your PC.



Virtual Remote screen



Toolbar

This section provides an outline of preparation for use of Virtual Remote Tool.  
For information on how to use Virtual Remote Tool, see Help of Virtual Remote Tool.

- Step 1: Install Virtual Remote Tool on the computer.
- Step 2: Connect the projector to the computer.
- Step 3: Start Virtual Remote Tool.

### TIP:

- Virtual Remote Tool can be used with a LAN and a serial connection. USB connection is not supported by Virtual Remote Tool.
- For update information on Virtual Remote Tool, visit our website:  
<http://www.nec-display.com/dl/en/index.html>

---

**NOTE:**

- When [COMPUTER] is selected from your source selection, the Virtual Remote screen or the toolbar will be displayed as well as your computer screen.
  - Use the supplied computer cable (VGA) to connect the COMPUTER IN connector directly with the monitor output connector of the computer to use Virtual Remote Tool.  
Using a switcher or other cables than the supplied computer cable (VGA) may cause failure in signal communication.  
VGA cable connector:  
Pin Nos. 12 and 15 are required for DDC/CI.
  - Virtual Remote Tool may not work depending on your computer's specifications and version of graphic adapters or drivers.
  - To run Virtual Remote Tool on Windows 8 and Windows XP, "Microsoft .NET Framework Version 2.0" is required. The Microsoft .NET Framework Version 2.0, 3.0 or 3.5 is available from Microsoft's web page. Download and install the it on your computer.
- 

**TIP:**

- The projector's COMPUTER IN connector supports DDC/CI (Display Data Channel Command Interface). DDC/CI is a standard interface for bidirectional communication between display/projector and computer.

### **Step 1: Install Virtual Remote Tool on the computer**

---

**NOTE:**

- To install Virtual Remote Tool, the Windows user account must have "Administrator" privilege (Windows 8, Windows 7, Windows Vista and Windows XP).
  - Exit all running programs before installing Virtual Remote Tool. If another program is running, the installation may not be completed.
- 

#### **1 Insert the accompanying NEC Projector CD-ROM into your CD-ROM drive.**

*The menu window will be displayed.*



---

TIP:

If the menu window will not be displayed, try the following procedure.

For Windows 7

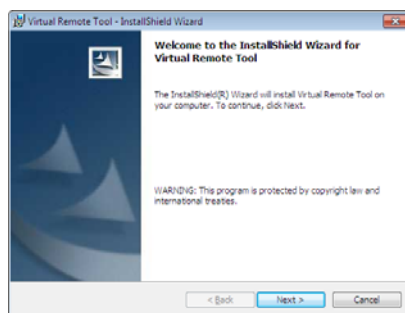
1. Click **“start”** on Windows.
2. Click **“All Programs”** → **“Accessories”** → **“Run”**.
3. Type your CD-ROM drive name (example: **“Q:\”**) and **“LAUNCHER.EXE”** in **“Name”**. (example: **Q:\LAUNCHER.EXE**)
4. Click **“OK”**.

*The menu window will be displayed.*

---

**2 Click “Install Virtual Remote Tool” on the menu window.**

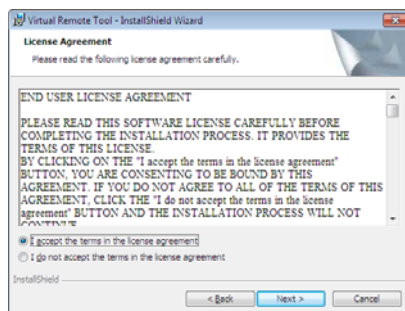
*The installation will start.*



*When the installation is complete, the Welcome window will be displayed.*

**3 Click “Next”.**

“END USER LICENSE AGREEMENT” screen will be displayed.



Read “END USER LICENSE AGREEMENT” carefully.

**4 If you agree, click “I accept the terms in the license agreement” and then click “Next”.**

- Follow the instructions on the installer screens to complete the installation.
- When the installation is complete, you will return to the menu window.

---

TIP:

## Uninstalling Virtual Remote Tool

### Preparation:

Exit Virtual Remote Tool before uninstalling. To uninstall Virtual Remote Tool, the Windows user account must have “Administrator” privilege (Windows 8, Windows 7 and Windows Vista) or “Computer Administrator” privilege (Windows XP).

#### • For Windows 7/Windows Vista

**1 Click “Start” and then “Control Panel”.**

*The Control Panel window will be displayed.*

**2 Click “Uninstall a program” under “Programs”**

*The “Programs and Features” window will be displayed.*

**3 Select Virtual Remote Tool and click it.**

**4 Click “Uninstall/Change” or “Uninstall”.**

• When the “User Account Control” windows is displayed, click “Continue”.

*Follow the instructions on the screens to complete the uninstallation.*

#### • For Windows XP

**1 Click “Start” and then “Control Panel”.**

*The Control Panel window will be displayed.*

**2 Double-click “Add / Remove Programs”.**

*The Add / Remove Programs window will be displayed.*

**3 Click Virtual Remote Tool from the list and then click “Remove”.**

*Follow the instructions on the screens to complete the uninstallation.*

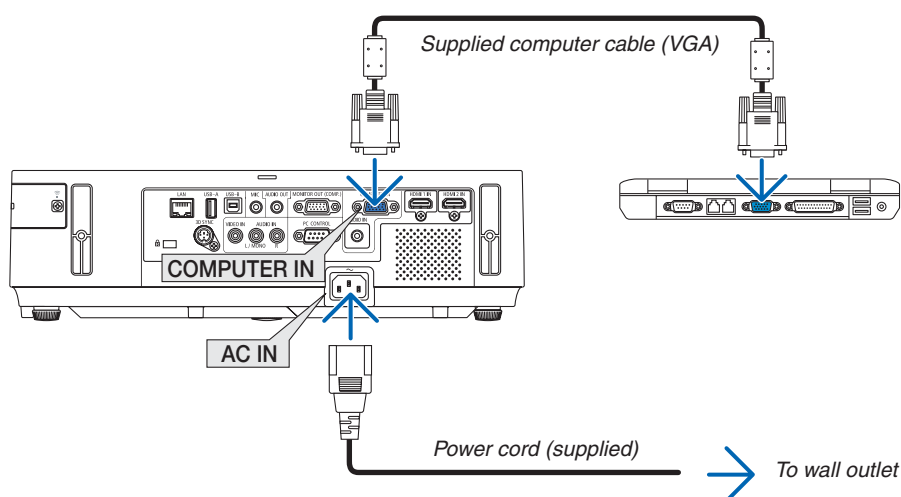
---

## Step 2: Connect the projector to the computer

**1 Use the supplied computer cable (VGA) to connect the COMPUTER IN connector of the projector directly with the monitor output connector of the computer.**

**2 Connect the supplied power cord to the AC IN terminal of the projector and the wall outlet.**

*The projector is in the standby condition.*



TIP:

- When Virtual Remote Tool starts for the first time, “Easy Setup” window will be displayed to navigate your connections.

---

### Step 3: Start Virtual Remote Tool

#### Start using the shortcut icon

- Double-click the shortcut icon  on the Windows Desktop.



#### Start from the Start menu

- Click [Start] → [All Programs] or [Programs] → [NEC Projector User Supportware] → [Virtual Remote Tool] → [Virtual Remote Tool].

When Virtual Remote Tool starts for the first time, “Easy Setup” window will be displayed.



Follow the instructions on the screens

When “Easy Setup” is completed, the Virtual Remote Tool screen will be displayed.



---

#### NOTE:

- When [NORMAL] is selected for [STANDBY MODE] from the menu, the projector cannot be turned on via the computer cable (VGA) or network (wired LAN/wireless LAN) connection.

#### TIP:

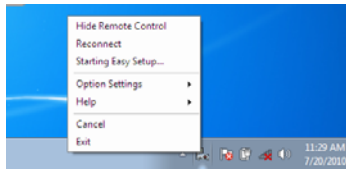
- The Virtual Remote Tool screen (or Toolbar) can be displayed without displaying “Easy Setup” window. To do so, click to place a check mark for “ Do not use Easy Setup next time” on the screen at Step 6 in “Easy Setup”.

---

## Exiting Virtual Remote Tool

- 1 Click the Virtual Remote Tool icon  on the Taskbar.

The pop-up menu will be displayed.



- 2 Click “Exit”.

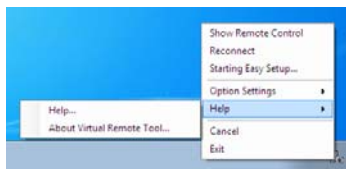
The Virtual Remote Tool will be closed.

## Viewing the help file of Virtual Remote Tool

- Displaying the help file using the taskbar

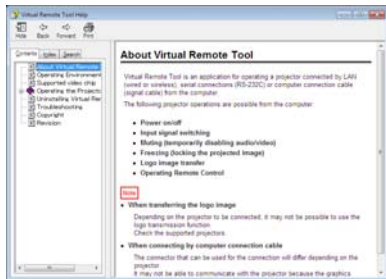
- 1 Click the Virtual Remote Tool icon  on the taskbar when Virtual Remote Tool is running.

The pop-up menu will be displayed.



2. Click “Help”.

The Help screen will be displayed.



- Displaying the help file using the Start Menu.

1. Click “Start” → “All programs” or “Programs” → “NEC Projector User Supportware” → “Virtual Remote Tool” → and then “Virtual Remote Tool Help” in this order.

The Help screen will be displayed.



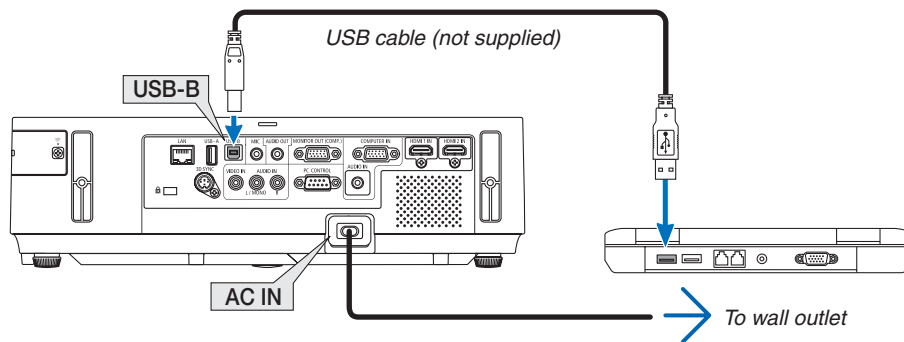
## Operating Your Computer's Mouse Functions from the Projector's Remote Control via the USB Cable (Remote Mouse Function)

The built-in remote mouse function enables you to operate your computer's mouse functions from the supplied remote control when the projector is connected to a computer via a commercially available USB cable (compatible with USB 2.0 specifications).

The Remote Mouse function works for the COMPUTER input while the computer screen is displayed.

The Remote Mouse function will not work while you freeze or magnify an image.

- Using the USB cable to connect the projector and the computer will also start USB Display function.



### NOTE:

- A USB cable must support the USB 2.0 Specifications.
- The mouse function can be used with the following operating systems:  
Windows 7, Windows XP, or Windows Vista
- In SP2 or older version of Windows XP, if the mouse cursor will not move correctly, do the following:  
Clear the Enhance pointer precision check box underneath the mouse speed slider in the Mouse Properties dialog box [Pointer Options tab].
- Wait at least 5 seconds after disconnecting the USB cable before reconnecting it and vice versa. The computer may not identify the USB cable if it is repeatedly connected and disconnected in rapid intervals.
- Connect the projector to the computer with a USB cable after starting the computer. Failure to do so may fail to start the computer.

### Operating your computer's mouse from the remote control

You can operate your computer's mouse from the remote control.

PAGE ▽/△ Button .....scrolls the viewing area of the window or to move to the previous or next slide in PowerPoint on your computer.

▲▼◀▶ Buttons.....moves the mouse cursor on your computer.

MOUSE L-CLICK/ENTER Button .....works as the mouse left button.

MOUSE R-CLICK Button .....works as the mouse right button.

### NOTE:

- When you operate the computer using the ▲▼◀ or ▶ button with the menu displayed, both the menu and the mouse pointer will be affected. Close the menu and perform the mouse operation.

TIP: You can change the Pointer speed on the Mouse Properties dialog box on the Windows. For more information, see the user documentation or online help supplied with your computer.

---

## Projecting Your Computer's Screen Image from the Projector via the USB Cable (USB Display)

Using a commercially available USB cable (compatible with USB 2.0 specifications) to connect the computer with the projector allows you to send your computer screen image to the projector for displaying. Power On/Off and source selection of the projector can be done from your computer without connecting a computer cable (VGA).

---

### NOTE:

- To make USB DISPLAY available on Windows 8, Windows 7, Windows Vista and Windows XP, the Windows user account must have "Administrator" privilege.
- USB Display uses functions of Image Express Utility Lite contained on NEC Projector CD-ROM. Starting USB Display, however, will not install Image Express Utility Lite on your computer. This is because USB Display executes the projector's program only.
- When Image Express Utility Lite is installed to both your computer and the projector, the one installed to your computer always start even if it is older version than the one installed to the projector. If audio transfer capability and other features will not work, try uninstalling Image Express Utility Lite from your computer. This will allow you to use all the features.
- USB Display will not work in [NORMAL] of [STANDBY MODE]. To use USB Display, select [NETWORK STANDBY] for [STANDBY MODE].
- When USB Display is used, the sound is output from the COMPUTER AUDIO IN Mini Jack (Stereo Mini). Image and sound may not be synchronized.

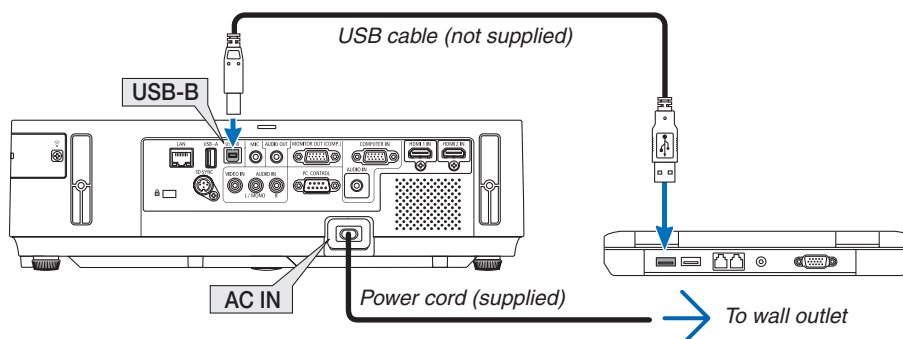
---

### 1. Start the computer.

### 2. Connect the projector's power cord to the wall outlet and put the projector into standby condition.

- Open the projector's lens cover or lens cap.

### 3. Use the USB cable to connect the computer with the projector.

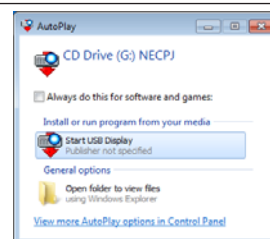


The message "The projector is in standby mode. Connect it?" will be displayed on the computer screen.

- The control window of Image Express Utility Lite will be displayed on the top of the screen.

---

NOTE: Depending on the computer setting, the "AutoPlay" window may be displayed when the computer detects the connection to the projector. If this happens, click the "Start USB Display" window.



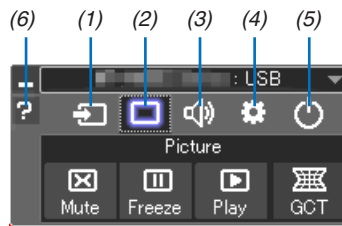
---







### 4. Click "Yes".

The projector will turn on and the message "The projector is getting ready. Please wait." will be displayed on the computer screen. This message will disappear in a few seconds.

---

**5. Operate the control window.**



- (1)  (Source)..... Selects an input source of the projector.
- (2)  (Picture) .... Turns on or off AV-MUTE (Picture mute), and turns on or off FREEZE (Freeze a picture), and Geometric Correction Tool (GCT) functions.
- (3)  (Sound) ..... Turns on or off AV-MUTE (Sound mute), play the sound and turns up or down the volume.
- (4)  (Others) ..... Uses “Update”, “HTTP Server”\*, “Settings” and “Information”.  
\* The HTTP Server cannot be selected when a USB cable is connected.
- (5)  (Exit) ..... Exit Image Express Utility Lite. You can also turn off the projector at the same time.
- (6)  (Help) ..... Displays the help of Image Express Utility Lite.

---

## Controlling the Projector by Using an HTTP Browser

### Overview

The HTTP Server function provides settings and operations for:

#### 1. Setting for wired/wireless network (NETWORK SETTINGS)

*To use wireless LAN connection, the optional USB Wireless LAN Unit is required.*

*To use wired/wireless LAN connection, connect the projector to the computer with a commercially available LAN cable.*

#### 2. Setting Alert Mail (ALERT MAIL)

When the projector is connected to a wired/wireless network, lamp replace time or error messages will be sent via e-mail.

#### 3. Operating the projector

*Power on/off, selecting input, volume control and picture adjustments are possible.*

#### 4. Setting PJLink PASSWORD and AMX BEACON

#### 5. Allowing Image Express Utility Lite to be downloaded and copied to your USB memory

This device uses “JavaScript” and “Cookies” and the browser should be set to accept these functions. The setting method will vary depending on the version of browser. Please refer to the help files and the other information provided in your software.

Two ways of access to the HTTP server function are available:

- **Start the Web browser on the computer via the network connected to the projector and enter the following URL :**  
**http://<the projector's IP address> /index.html**
- **Use Image Express Utility Lite contained on the supplied NEC Projector CD-ROM.**

TIP: The factory setting IP address is [DHCP ON].

---

### NOTE:

- To use the projector in a network, consult with your network administrator about network settings.
- The display's or button's response can be slowed down or operation may not be accepted depending the settings of your network.  
Should this happen, consult your network administrator. The projector may not respond if its buttons are repeatedly pressed in rapid intervals. Should this happen, wait a moment and repeat. If you still can't get any response, turn off and back on the projector.
- If the PROJECTOR NETWORK SETTINGS screen does not appear in the web browser, press the Ctrl+F5 keys to refresh your web browser (or clear the cache).

---

### Preparation before Use

Connect the projector to a commercially available LAN cable before engaging in browser operations.

Operation with a browser that uses a proxy server may not be possible depending on the type of proxy server and the setting method. Although the type of proxy server will be a factor, it is possible that items that have actually been set will not be displayed depending on the effectiveness of the cache, and the contents set from the browser may not be reflected in operation. It is recommended that a proxy server not be used unless it is unavoidable.

---

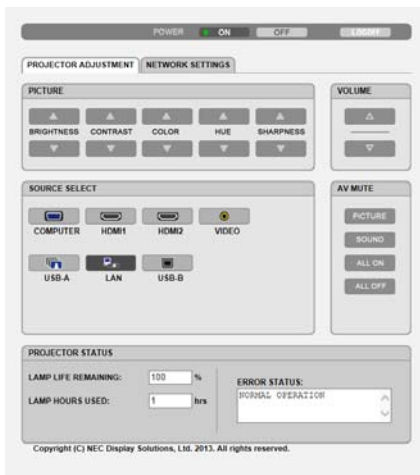
## Handling of the Address for Operation via a Browser

Regarding the actual address that is entered for the address or entered to the URL column when operation of the projector is via a browser, the host name can be used as it is when the host name corresponding to the IP address of the projector has been registered to the domain name server by a network administrator, or the host name corresponding to the IP address of the projector has been set in the “HOSTS” file of the computer being used.

Example 1: When the host name of the projector has been set to “pj.nec.co.jp”, access is gained to the network setting by specifying  
http://pj.nec.co.jp/index.html  
for the address or the entry column of the URL.

Example 2: When the IP address of the projector is “192.168.73.1”, access is gained to the network setting by specifying  
http://192.168.73.1/index.html  
for the address or the entry column of the URL.

## PROJECTOR ADJUSTMENT



**POWER:** This controls the power of the projector.  
ON ..... Power is switched on.  
OFF ..... Power is switched off.

**VOLUME:** This controls the volume of the projector.  
▲ ..... Increases the volume adjustment value.  
▼ ..... Decreases the volume adjustment value.

**AV-MUTE:** This controls the mute function of the projector.  
PICTURE ON ..... Mutes the video.  
PICTURE OFF ..... Cancels the video muting.  
SOUND ON ..... Mutes the audio.  
SOUND OFF ..... Cancels the audio muting.  
ALL ON ..... Mutes each of the video, and audio functions.  
ALL OFF ..... Cancels the muting of each of the video, and audio functions.

---

PICTURE: Controls the video adjustment of the projector.

BRIGHTNESS ▲ .... Increases the brightness adjustment value.

BRIGHTNESS ▼ .... Decreases the brightness adjustment value.

CONTRAST ▲ ..... Increases the contrast adjustment value.

CONTRAST ▼ ..... Decreases the contrast adjustment value.

COLOR ▲ ..... Increases the color adjustment value.

COLOR ▼ ..... Decreases the color adjustment value.

HUE ▲ ..... Increases the hue adjustment value.

HUE ▼ ..... Decreases the hue adjustment value.

SHARPNESS ▲ .... Increases the sharpness adjustment value.

SHARPNESS ▼ .... Decreases the sharpness adjustment value.

- The functions that can be controlled will vary depending on the signal being input to the projector.

SOURCE SELECT: This switches the input connector of the projector.

COMPUTER ..... Switches to the COMPUTER IN connector.

HDMI 1 ..... Switches to the HDMI 1 IN connector.

HDMI 2 ..... Switches to the HDMI 2 IN connector.

VIDEO ..... Switches to the VIDEO IN connector.

USB-A..... Switches to the data on the USB memory device.

LAN..... Switches to a LAN signal.

USB-B..... Switches to the USB-B Port.

PROJECTOR STATUS: This displays the condition of the projector.

LAMP LIFE REMAINING ..... Displays the remaining life of the lamp as a percentage.

LAMP HOURS USED..... Displays how many hours the lamp has been used.

ERROR STATUS..... Displays the status of errors occurring within the projector.

LOG OFF: Logging off your projector and returning to the authentication screen (LOGON screen).



NETWORK TYPE	<p>Select communication method when using wireless LAN.  <b>INFRASTRUCTURE:</b> Select this option when communicating with one or more equipment connected to the wireless LAN network via a wireless access point.  <b>AD HOC:</b> Select this option when using the wireless LAN to directly communicate with a computer in peer-to-peer mode.</p>														
SECURITY TYPE	<p>Turn on or off the encryption mode for secure transmission. When turn on the encryption mode, set WEP key or encrypted key.</p> <table border="1" data-bbox="496 533 1394 869"> <tr> <td data-bbox="496 533 724 600">DISABLE</td> <td colspan="2" data-bbox="724 533 1394 600">Will not turn on the encryption feature. Your communications may be monitored by someone.</td> </tr> <tr> <td data-bbox="496 600 724 645">WEP 64 bit</td> <td colspan="2" data-bbox="724 600 1394 645">Uses 64-bit datalength for secure transmission.</td> </tr> <tr> <td data-bbox="496 645 724 741">WEP 128 bit</td> <td colspan="2" data-bbox="724 645 1394 741">Uses 128-bit datalength for secure transmission. This option will increase privacy and security when compared to use of 64-bit datalength encryption.</td> </tr> <tr> <td data-bbox="496 741 954 869">WPA-PSK TKIP/ WPA-PSK AES/ WPA2-PSK TKIP/ WPA2-PSK AES/</td> <td colspan="2" data-bbox="954 741 1394 869">These options provide stronger security than WEP.</td> </tr> </table> <p><i>NOTE:</i></p> <ul style="list-style-type: none"> <li>• The WEP settings must be the same as communication devices such as PC or access point in your wireless network.</li> <li>• When you use WEP, your image transmission speed will slow down.</li> <li>• [WPA PSK-TKIP], [WPA PSK-AES], [WPA2 PSK-TKIP] and [WPA2 PSK-AES] are not available when [AD HOC] is selected from [NETWORK TYPE].</li> </ul>			DISABLE	Will not turn on the encryption feature. Your communications may be monitored by someone.		WEP 64 bit	Uses 64-bit datalength for secure transmission.		WEP 128 bit	Uses 128-bit datalength for secure transmission. This option will increase privacy and security when compared to use of 64-bit datalength encryption.		WPA-PSK TKIP/ WPA-PSK AES/ WPA2-PSK TKIP/ WPA2-PSK AES/	These options provide stronger security than WEP.	
DISABLE	Will not turn on the encryption feature. Your communications may be monitored by someone.														
WEP 64 bit	Uses 64-bit datalength for secure transmission.														
WEP 128 bit	Uses 128-bit datalength for secure transmission. This option will increase privacy and security when compared to use of 64-bit datalength encryption.														
WPA-PSK TKIP/ WPA-PSK AES/ WPA2-PSK TKIP/ WPA2-PSK AES/	These options provide stronger security than WEP.														
INDEX	<p>Select encryption key when selecting [WEP 64 bit] or [WEP 128 bit] in [SECURITY TYPE]. When [WEP 64bit] or [WEP 128bit] is selected for [SECURITY TYPE], the WEP key is fixed to "1" and cannot be changed.</p>														
KEY	<p>When selecting [WEP 64 bit] or [WEP 128 bit] in [SECURITY TYPE]:  Enter WEP key.</p> <table border="1" data-bbox="496 1245 1394 1368"> <thead> <tr> <th data-bbox="496 1245 724 1290">Select</th> <th data-bbox="724 1245 1066 1290">Characters (ASCII)</th> <th data-bbox="1066 1245 1394 1290">Hexadecimal digit (HEX)</th> </tr> </thead> <tbody> <tr> <td data-bbox="496 1290 724 1335">WEP 64 bit</td> <td data-bbox="724 1290 1066 1335">Up to 5 characters</td> <td data-bbox="1066 1290 1394 1335">Up to 10 characters</td> </tr> <tr> <td data-bbox="496 1335 724 1368">WEP 128 bit</td> <td data-bbox="724 1335 1066 1368">Up to 13 characters</td> <td data-bbox="1066 1335 1394 1368">Up to 26 characters</td> </tr> </tbody> </table> <p>When selecting [WPA PSK-TKIP], [WPA PSK-AES], [WPA2 PSK-TKIP] or [WPA2 PSK-AES]:  Enter encryption key. Key length must be 8 or greater and 63 or less.</p>			Select	Characters (ASCII)	Hexadecimal digit (HEX)	WEP 64 bit	Up to 5 characters	Up to 10 characters	WEP 128 bit	Up to 13 characters	Up to 26 characters			
Select	Characters (ASCII)	Hexadecimal digit (HEX)													
WEP 64 bit	Up to 5 characters	Up to 10 characters													
WEP 128 bit	Up to 13 characters	Up to 26 characters													



• **NAME**

PROJECTOR NAME	Enter a name for your projector so that your computer can identify the projector. A projector name must be 16 characters or less. TIP: Projector name will not be affected even when [RESET] is done from the menu.
HOST NAME	Enter the hostname of the network connected to the projector. A host name must be 15 or less.
DOMAIN NAME	Enter the domain name of the network connected to the projector. A domain name must be 60 characters or less.

• **ALERT MAIL**

ALERT MAIL (English only)	This option will notify your computer of lamp replace time or error messages via e-mail when using wireless or wired LAN. Placing a checkmark will turn on the Alert Mail feature. Clearing a checkmark will turn off the Alert Mail feature. Sample of a message to be sent from the projector: The lamp is at the end of its usable life. Please replace the lamp. Projector Name: NEC Projector Lamp Hours Used: 100 [H]
SENDER'S ADDRESS	Enter sender's address.
SMTP SERVER NAME	Enter the SMTP server name to be connected to the projector.
RECIPIENT'S ADDRESS 1,2,3	Enter your recipient's address. Up to three addresses can be entered.
TEST MAIL	Send a test mail to check whether your settings are correct or not <i>NOTE:</i> <ul style="list-style-type: none"> <li>• If you execute a test, you may not receive an Alert mail. Should this happen, check if network settings are correct.</li> <li>• If you entered an incorrect address in a test, you may not receive an Alert mail. Should this happen, check if the Recipient's Address is correct.</li> </ul>
SAVE	Click this button to reflect the above settings.

• **NETWORK SERVICE**

PJLink PASSWORD	Set a password for PJLink*. A password must be 32 characters or less. Do not forget your password. However, if you forget your password, consult with your dealer.
HTTP PASSWORD	Set a password for HTTP server. A password must be 10 characters or less.
AMX BEACON	Turn on or off for detection from AMX Device Discovery when connecting to the network supported by AMX's NetLinX control system. TIP: When using a device that supports AMX Device Discovery, all AMX NetLinX control system will recognize the device and download the appropriate Device Discovery Module from an AMX server. Placing a checkmark will enable detecting the projector from AMX Device Discovery. Clearing a checkmark will disable detecting the projector from AMX Device Discovery.
Image Express Utility Lite	Click "DOWNLOAD" to display the download page from which the EXE file of Image Express Utility Lite can be downloaded to your USB memory connected to your computer.
SAVE	Click this button to reflect the above settings.

\* What is PJLink?

PJLink is a standardization of protocol used for controlling projectors of different manufacturers. This standard protocol is established by Japan Business Machine and Information System Industries Association (JBMIA) in 2005.  
The projector supports all the commands of PJLink Class 1.  
Setting of PJLink will not be affected even when [RESET] is done from the menu.

---

### CRESTRON ROOMVIEW compatibility

The projector supports CRESTRON ROOMVIEW, allowing multiple devices connected in the network to be managed and controlled from a computer or a controller.

For more information, visit <http://www.crestron.com>

#### <Setting Procedure>

Access to the HTTP server function, and make necessary settings for [CRESTRON] in [NETWORK SETTINGS].

#### • ROOMVIEW for managing from the computer.

DISABLE	Disables ROOMVIEW.
ENABLE	Enables ROOMVIEW.

#### • CRESTRON CONTROL for managing from the controller.

DISABLE	Disables CRESTRON CONTROL.
ENABLE	Enables CRESTRON CONTROL.
IP ADDRESS	Set your IP address of CRESTRON SERVER.
IP ID	Set your IP ID of CRESTRON SERVER.

TIP: The CRESTRON settings are required only for use with CRESTRON ROOMVIEW.

For more information, visit <http://www.crestron.com>

#### • INFORMATION

WIRED LAN	Display a list of settings of wired LAN connection.
WIRELESS LAN	Display a list of settings of wireless LAN connection.
UPDATE	Reflect settings when they are changed.

---

## Controlling the Projector over a LAN (PC Control Utility Pro 4/ Pro 5)

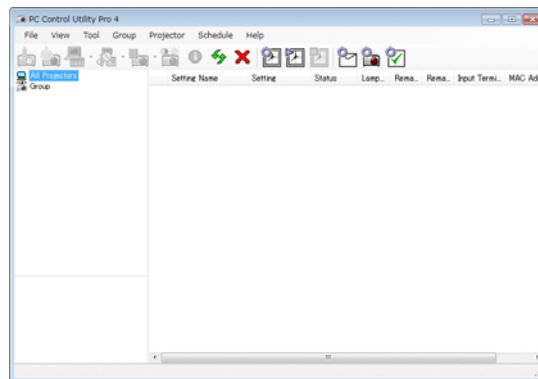
Using the utility software “PC Control Utility Pro 4” and “PC Control Utility Pro 5” included on the companion NEC Projector CD-ROM, the projector can be controlled from a computer over a LAN.

PC Control Utility Pro 4 is a program compatible with Windows.

PC Control Utility Pro 5 is a program compatible with Mac OS.

### Control Functions

Power On/Off, signal selection, picture freeze, picture mute, audio mute, adjusting, error message notification, event schedule.



Screen of PC Control Utility Pro 4

This section provides an outline of preparation for use of PC Control Utility Pro 4/Pro 5. For information on how to use PC Control Utility Pro 4/Pro 5, see Help of PC Control Utility Pro 4/Pro 5.

- Step 1: Install PC Control Utility Pro 4/Pro 5 on the computer.
- Step 2: Connect the projector to a LAN.
- Step 3: Start PC Control Utility Pro 4/Pro 5.

- To run PC Control Utility Pro 4 on Windows 8 and Windows XP, “Microsoft .NET Framework Version 2.0” is required. The Microsoft .NET Framework Version 2.0, 3.0 or 3.5 is available from Microsoft’s web page. Download and install the it on your computer.

TIP:

- PC Control Utility Pro 4 can be used with a serial connection.

### Using on Windows

#### Step 1: Install PC Control Utility Pro 4 on the computer

*NOTE:*

- To install or uninstall the program, the Windows user account must have [Administrator] privilege (Windows 8, Windows 7, Windows Vista and Windows XP)
- Exit all running programs before installation. If another program is running, the installation may not be completed.

#### 1 Insert the accompanying NEC Projector CD-ROM into your CD-ROM drive.

*The menu window will be displayed.*

---

TIP:

If the menu window will not be displayed, try the following procedure.

For Windows 7:

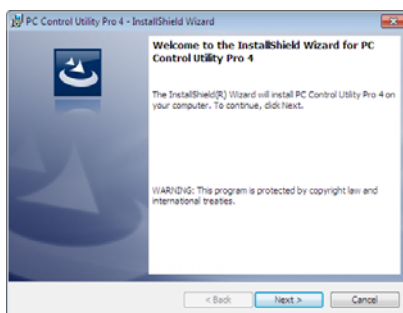
1. Click “start” on Windows.
2. Click “All Programs” → “Accessories” → “Run”.
3. Type your CD-ROM drive name (example: “Q:”) and “LAUNCHER.EXE” in “Name”. (example: Q:\LAUNCHER.EXE)
4. Click “OK”.

*the menu window will be displayed.*

---

**2 Click “PC Control Utility Pro 4” on the menu window.**

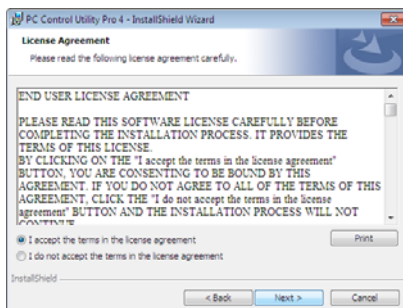
*The installation will start.*



*When the installation is complete, the Welcome window will be displayed.*

**3 Click “Next”.**

“END USER LICENSE AGREEMENT” screen will be displayed.



Read “END USER LICENSE AGREEMENT” carefully.

**4 If you agree, click “I accept the terms in the license agreement” and then click “Next”.**

- Follow the instructions on the installer screens to complete the installation.
- When the installation is complete, you will return to the menu window.

---

TIP:

- Uninstalling PC Control Utility Pro 4

To uninstall PC Control Utility Pro 4, do the same procedures stated as in “Uninstalling Virtual Remote Tool”. Read “Virtual Remote Tool” as “PC Control Utility Pro 4”

---

---

## Step 2: Connect the projector to a LAN.

Connect the projector to the LAN by following the instructions in “Connecting to a Wired LAN” , “Connecting to a Wireless LAN (Optional: NP05LM series)” and “9. Controlling the Projector by Using an HTTP Browser”

## Step 3: Start PC Control Utility Pro 4

Click “Start” → “All programs” or “Programs” → “NEC Projector User Supportware” → “PC Control Utility Pro 4” → “PC Control Utility Pro 4”.

---

### NOTE:

- For the Schedule function of the PC Control utility Pro 4 to work, you must have your computer running and not in standby/sleep mode. Select “Power Options” from the “Control Panel” in Windows and disable its standby/sleep mode before running the scheduler.

[Example] For Windows 7:

Select “Control Panel” → “System and Security” → “Power Options” → “Change when the computer sleeps” → “Put the computer to sleep” → “Never”.

### NOTE:

- When [NORMAL] is selected for [STANDBY MODE] from the menu, the projector cannot be turned on via the network (wired LAN/wireless LAN) connection.

---

### TIP:

## Viewing the Help of PC Control Utility Pro 4

- **Displaying the Help file of PC Control Utility Pro 4 while it is running.**

Click “Help (H)” → “Help (H) ...” of window of PC Control Utility Pro 4 in this order.

*The pop-up menu will be displayed.*

- **Displaying the help file using the Start Menu.**

Click “Start” → “All programs” or “Programs” → “NEC Projector User Supportware” → “PC Control Utility Pro 4” → “PC Control Utility Pro 4 Help”.

*The Help screen will be displayed.*

---

---

## Using on Mac OS

### Step 1: Install PC Control Utility Pro 5 on the computer

1. Insert the accompanying NEC Projector CD-ROM in your Mac CD-ROM drive.

The CD-ROM icon will be displayed on the desktop.

2. Double-click the CD-ROM icon.

*The CD-ROM window will be displayed.*

3. Double-click the “Mac OS X” folder.

4. Double-click “PC Control Utility Pro 5.pkg”.

*The installer will start.*

5. Click “Next”.

“END USER LICENSE AGREEMENT” screen will be displayed.

6. Read “END USER LICENSE AGREEMENT” and click “Next”.

*The confirmation window will be displayed*

7. Click “I accept the terms in the license agreement”.

*Follow the instructions on the installer screens to complete the installation.*

### Step 2: Connect the projector to a LAN

Connect the projector to the LAN by following the instructions in “Connecting to a Wired LAN” , “Connecting to a Wireless LAN (Optional: NP05LM series)” and “Controlling the Projector by Using an HTTP Browser”

### Step 3: Start PC Control Utility Pro 5

1. Open your Applications folder in Mac OS.

2. Click the “PC Control Utility Pro 5” folder.

3. Click the “PC Control Utility Pro 5” icon.

*PC Control Utility Pro 5 will start.*

---

#### NOTE:

- For the Schedule function of the PC Control utility Pro 5 to work, you must have your computer running and not in sleep mode. Select “Energy Saver” from the “System Preferences” in Mac and disable its sleep mode before running the scheduler.
- When [NORMAL] is selected for [STANDBY MODE] from the menu, the projector cannot be turned on via the network (wired LAN/wireless LAN) connection.

---

#### TIP:

#### Viewing the Help of PC Control Utility Pro 5

- Displaying the Help file of PC Control Utility Pro 5 while it is running.
- From the menu bar, click “Help” → “Help” in this order.

*The Help screen will be displayed.*

- Displaying the Help using the Dock

1. Open “Application Folder” in Mac OS.

2. Click the “PC Control Utility Pro 5” folder.

3. Click the “PC Control Utility Pro 5 Help” icon.

*The Help screen will be displayed.*

---

---

## Projecting Your Computer's Screen Image from the Projector over a LAN (Image Express Utility Lite)

Using Image Express Utility Lite contained on the supplied NEC Projector CD-ROM allows you to send the computer's screen image and sound to the projector over a USB cable or a wired or wireless LAN.

Image Express Utility Lite is a program compatible with Windows.

Image Express Utility Lite for Mac OS is a program compatible with Mac OS.

This section will show you an outline about how to connect the projector to a LAN and to use Image Express Utility Lite. For the operation of Image Express Utility Lite, see the help of Image Express Utility Lite.

Step 1: install Image Express Utility Lite on the computer.

Step 2: Connect the projector to a LAN.

Step 3: Start Image Express Utility Lite.

TIP:

- Image Express Utility Lite (for Windows) can be started from most commercially available removable media such as USB memory devices or SD cards without the need to install on your computer.

### What You can Do with Image Express Utility Lite

#### • Image transmission (for Windows and Mac OS)

- The screen of your computer can be sent to the projector via a wired or wireless network without a computer cable (VGA).
- By using "EASY CONNECTION" function, the complicated network settings can be simplified and the computer will automatically connect to the projector.
- The screen of your computer can be sent to up to four projectors at the same time.

#### • Audio transfer capability (for Windows only)

- Image Express Utility Lite allows you to send the computer's screen image and audio to the projector over wired/ wireless LAN or USB connection.
- Audio transfer capability is available only when the computer connects with the projector in peer-to-peer network.

#### • USB Display (for Windows only)

- Computer's screen image and audio can be projected via a USB cable, without connecting a computer cable (VGA).
- Just connecting the computer and the projector over a USB cable will make the USB Display function available (Plug & Play) even without installing Image Express Utility Lite on the computer.

#### • Geometric Correction Tool [GCT] (for Windows only)

See "Projecting an Image from an Angle (Geometric Correction Tool in Image Express Utility Lite)".

---

## Using on Windows

### Step 1: install Image Express Utility Lite on the computer.

---

#### NOTE:

- To install or uninstall the program, the Windows user account must have “Administrator” privilege (Windows 8, Windows 7, Windows Vista and Windows XP).
  - Exit all running programs before installation. If another program is running, the installation may not be completed.
  - Image Express Utility Lite will be installed to the system drive of your computer.  
If the message “There is not enough free space on destination” is displayed, free up enough space (about 100 MB) to install the program.
- 

#### 1. Insert the accompanying NEC Projector CD-ROM into your CD-ROM drive.

*The menu window will be displayed.*

---

#### TIP:

If the menu window will not be displayed, try the following procedure.

For Windows 7:

1. Click “start” on Windows.
2. Click “All Programs” → “Accessories” → “Run”.
3. Type your CD-ROM drive name (example: “Q:”) and “LAUNCHER.EXE” in “Name”. (example: Q:\LAUNCHER.EXE)
4. Click “OK”.

*The menu window will be displayed.*

---

#### 2. Click “Installing Image Express Utility Lite” on the menu window.

*The installation will start.*

“END USER LICENSE AGREEMENT” screen will be displayed.

Read “END USER LICENSE AGREEMENT” carefully

#### 3. If you agree, click “I agree.” and then click “Next”.

- Follow the instructions on the installer screens to complete the installation.
- When the installation is complete, you will return to the menu window.

*When the installation is complete, a completion message will be displayed.*

#### 4. Click “OK”.

*This completes the installation.*

---

#### TIP:

- Uninstalling Image Express Utility Lite

To uninstall Image Express Utility Lite, do the same procedures stated as in “Uninstalling Virtual Remote Tool”. Read “Virtual Remote Tool” as “Image Express Utility Lite”

---

### Step 2: Connect the projector to a LAN.

Connect the projector to the LAN by following the instructions in “Connecting to a Wired LAN” , “Connecting to a Wireless LAN (Optional: NP05LM series)” and “9. Controlling the Projector by Using an HTTP Browser”



---

### Step 3: Start Image Express Utility Lite.

1. On Windows, click “Start” → “All programs” → “NEC Projector UserSupportware” → “Image Express Utility Lite” → “Image Express Utility Lite”.

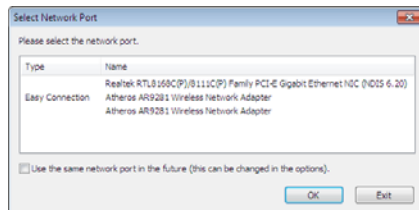
Image Express Utility Lite will start.

The select window for network connection will be displayed

2. Select Network and click “OK”.

*The select window for destination will show a list of connectable projectors.*

- When connecting the computer directly to the projector by one-to-one, “Easy Connection” is recommended.



- When one or more networks for “EASY CONNECTION” are found, the “Easy Connection Selection Screen” window will be displayed.

- To check for the network available for connected projectors, from the menu, select [INFO.] → [WIRELESS LAN] → [SSID].

3. Select the network you wish to connect, and click “Select”.

*The target selection window will be displayed.*

4. Place a check mark for projectors to be connected, and then click “Connect”.

- When one or more projectors are displayed, from the menu on the projector, select [INFO.] → [WIRELESS LAN] → [IP ADDRESS].

*When connecting with the projector is established, you can operate the control window to control the projector.*

---

#### NOTE:

- When [NORMAL] is selected for [STANDBY MODE] from the menu, the projector that is turned off will not be displayed in the select window for destination
- 

#### TIP:

---

#### Viewing the “Help” file of Image Express Utility Lite

- **Displaying the Help file of Image Express Utility Lite while it is running.**

Click the [?] (help) icon on the control window.

*The Help screen will be displayed.*

- **Displaying the Help file of GCT while it is running.**

Click “Help” → “Help” on the edit window.

*The Help screen will be displayed.*

- **Displaying the help file using the Start Menu.**

Click “Start” → “All programs” or “Programs” → “NEC Projector User Supportware” → “Image Express Utility Lite” → “Image Express Utility Lite Help”.

*The Help screen will be displayed.*

---

---

## Starting Image Express Utility Lite from a USB Memory or SD Card

Image Express Utility Lite can be started from commercially available removable media such as USB memory or SD cards if it is copied beforehand. This will eliminate the trouble of installing Image Express Utility Lite to your computer.

### 1. Copy Image Express Utility Lite to removable media.

Copy all the folders and files (total size approx. 6MB) from the "IEU\_Lite (removable-media)" folder in the supplied *NEC Projector CD-ROM* to the root directory of your removable media.

### 2. Insert your removable media into your computer.

The "AutoPlay" screen will be displayed on your computer.

TIP:

- If the "AutoPlay" screen is not displayed, open the folder from "Computer" ("My Computer" for Windows XP).

### 3. Click "Open folder to view files"

The IEU\_Lite.exe, other folder, and files will be displayed.

### 4. Double-click the "IEU\_Lite.exe" ( ) icon.

Image Express Utility Lite will start.

---

#### NOTE:

- The "EASY CONNECTION" function is not supported when Image Express Utility Lite is started from removable media.
-

---

## Downloading Image Express Utility Lite via the HTTP server

Downloading procedure when the projector is connected to the Internet.

1. Access the HTTP server.
2. Select the “NETWORK SETTINGS” tab and then the “NETWORK SERVICE” tab.
3. Click “DOWNLOAD” for “Image Express Utility Lite”.

*The download page will be displayed.*

4. Place a checkmark for IEU\_Lite (removable-media).zip and/or gct.ngm.
5. Click “DOWNLOAD”.
6. Choose a folder where you want to download the file and click “SAVE”.

*(A folder in your computer is recommended.)*

*The downloading will start.*

After the downloading is completed, make sure that the file is placed in the destination folder.

### Supported OS:

- Windows 8 (32-bit/64-bit)
- Windows 8 Pro (32-bit/64-bit)
- Windows 8 Enterprise (32-bit/64-bit)
- Windows 7 Home Basic (32-bit/64-bit)
- Windows 7 Home Premium (32-bit/64-bit)
- Windows 7 Professional (32-bit/64-bit)
- Windows 7 Ultimate (32-bit/64-bit)
- Windows 7 Enterprise (32-bit/64-bit)
- Windows Vista Home Basic (32-bit/64-bit)
- Windows Vista Home Premium (32-bit/64-bit)
- Windows Vista Business (32-bit/64-bit)
- Windows Vista Ultimate (32-bit/64-bit)
- Windows Vista Enterprise (32-bit/64-bit)
- Windows XP Home Edition Service Pack 3 or later (32-bit)
- Windows XP Professional Service Pack 3 or later (32-bit)

### Starting IEU Lite (removable-media).zip and gct.ngm

1. Extract the downloaded IEU Lite (removable-media) zip file into your removable media.
2. Double-click the IEU Lite.exe icon in the IEU Lite (removable-media) folder.
  - If you downloaded gct.ngm too, move gct.ngm to the same folder where IEU\_Lite\_GCT.exe is placed.
  - To use the Geometric Correction Tool function (GCT) of Image Express Utility lite together with a video cable, double-click the “IEU\_Lite\_GCT.exe” icon. When GCT correction data (\*.ngm) is saved in the same folder where IEU\_Lite\_GCT.exe is placed, the data will be automatically used without the need of LAN connection.

---

#### NOTE:

The “EASY CONNECTION” function is not supported when Image Express Utility Lite is started from removable media.

---

---

## Using on Mac OS

### Step 1: Install Image Express Utility Lite for Mac OS on the computer

1. Insert the accompanying NEC Projector CD-ROM in your Mac CD-ROM drive.

The CD-ROM icon will be displayed on the desktop.

2. Double-click the CD-ROM icon.

The CD-ROM window will be displayed.

3. Double-click the “Mac OS X” folder.

4. Double-click “Image Express Utility Lite.dmg”. in the "Image Express Utility Lite" folder.

The “Image Express Utility Lite” window will be displayed.

5. Drag and drop the “Image Express Utility Lite” folder to your Applications folder in Mac OS.



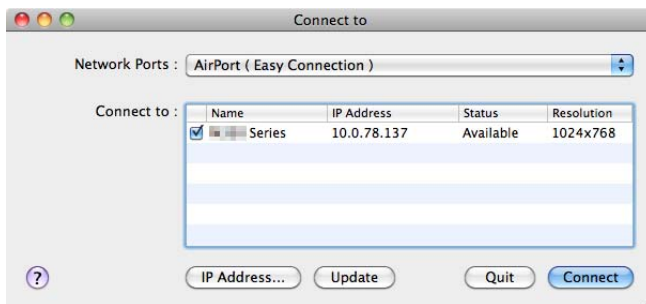
### Step 2: Connect the projector to a LAN

Connect the projector to the LAN by following the instructions in “Connecting to a Wired LAN”, “Connecting to a Wireless LAN (Optional: NP05LM series)” and “Controlling the Projector by Using an HTTP Browser”

### Step 3: Start Image Express Utility Lite for Mac OS

1. Open your Applications folder in Mac OS.
2. Double-click the “Image Express Utility Lite” folder.
3. Double-click the “Image Express Utility Lite” icon.

When Image Express Utility Lite for Mac OS starts, the select window for destination will be displayed.



- At the first time of startup, “END USER LICENSE AGREEMENT” screen will be displayed before the select window for destination is displayed.  
Read “END USER LICENSE AGREEMENT” and select “I accept the terms in the license agreement”, and click “OK”.
4. Select a projector to be connected, and then click “Connect”.  
Your desktop screen will be displayed on the projector.

---

TIP:

Viewing the Help of Image Express Utility Lite for Mac OS

- **From the menu bar, click “Help” → “Image Express Utility Lite Help” while Image Express Utility is running.**

*The Help screen will be displayed*

---

---

## Projecting an Image from an Angle (Geometric Correction Tool in Image Express Utility Lite)

The Geometric Correction Tool (GCT) function allows you to correct distortion of images projected even from an angle.

### What you can do with GCT

- The GCT feature includes the following three functions
  - **4-point Correction:** You can fit a projected image within the border of the screen easily by align the four corners of an image to the ones of the screen.
  - **Multi-point Correction:** You can correct a distorted image on the corner of a wall or irregular shaped screen by using many separated screens to correct the image as well as 4-point Correction.
  - **Parameters Correction:** You can correct a distorted image by using a combination of transformational rules prepared in advance.

This section will show an example for use with 4-point Correction.

For information about “Multi-point Correction” and “Parameters Correction”, see the help file of Image Express Utility Lite.

- Your correction data can be stored in the projector or your computer which can be restored when necessary.
- The GCT function is available with a USB cable, wired or wireless LAN connection, and video cable.

### Projecting an Image from an Angle (GCT)

This section will show an example for use with USB Display (using a USB cable to connect a computer and the projector).

- The USB Display function will automatically display the control window
- For a video cable or LAN connection, install and start Image Express Utility Lite in your computer beforehand.


Preparation: Adjust the projector position or the zoom so that the projected image can cover the whole screen area.

1. Click the “” (Picture) icon and then the “” button.

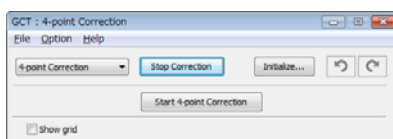
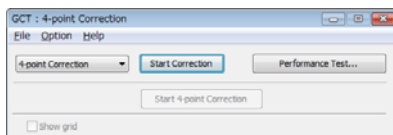


The “4-point Correction” window will be displayed.

2. Click the “Start Correction” button and then “Start 4-point Correction” button.

A green frame and a mouse pointer (  ) will be displayed.

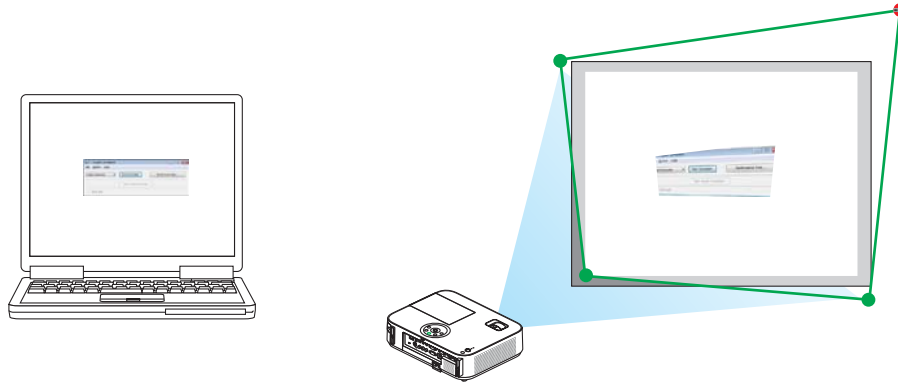
- Four [ ● ] marks will be appeared at four corners of the green frame



---

**3. Use the mouse to click the [ ● ] mark of which corner you wish to move.**

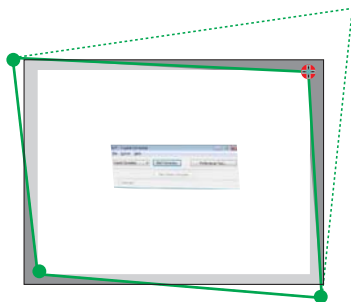
*The currently selected [ ● ] mark will turn red.*



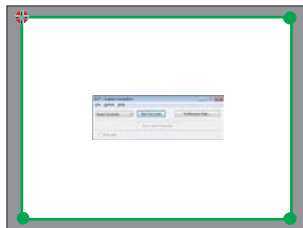
(In the above example, Windows screens are omitted for clarification.)

**4. Drag the selected [ ● ] mark to the point you wish to correct and drop it.**

- When you click somewhere within the project image area, the nearest [ ● ] mark will go to the position where *the mouse cursor is*.



**5. Repeat Step 3 and 4 to correct the distortion of the projected image.**



**6. After completing, right-click the mouse.**

*The green frame and the mouse pointer will disappear from the projected image area. This will complete the correction.*

**7. Click the “X” (close) button on the “4-point Correction” window.**

The “4-point Correction” window will disappear and the 4-point correction will take effect.

**8. Click the “” button on the control window to exit the GCT.**

TIP:

- After performing the 4-point correction, you can save the 4-point correction data to the projector by clicking “File” → “Export to the projector...” on the “4-point Correction” window.
- See the Help of Image Express Utility Lite for operating “4-point Correction” window and other functions than GCT.

# Using the Viewer

---

## What you can do with the Viewer

The Viewer has the following features.

- When a commercially available USB memory that stores image files is inserted into the USB-A port (Type A) of the projector, the Viewer allows you to view the image files on the USB memory.  
Even if no computer is available, presentations can be conducted simply with the projector.
- Supported graphic format is JPEG.
- The Viewer displays the thumbnail screen (JPEG Exif only) on which you can jump to any specific image you wish to project.
- There are two ways of playback for slideshow: manual playback and auto playback. The interval time can be changed in auto playback.
- The order of displaying images can be set by name, date or size. Ascending or descending order can be selected.
- Images can be rotated by 90 degrees during playback.



---

**NOTE**

- The USB-A port of the projector does not support USB hub.
- The following operations by using the buttons on the projector are not possible when the VIEWER screen such as the slide screen and the thumbnail screen is displayed.
  - Keystone correction by using the ▲/▼ button
  - Auto Adjustment by using the AUTO ADJ. button
  - Volume control with the ◀ or ▶ buttonTo perform Keystone correction or Source selection during display of the Viewer, press the MENU button twice to display the menu and operate Viewer from the menu.
- Freezing picture by using the FREEZE button on the remote control is not possible when the VIEWER screen such as the slide screen and the thumbnail screen is displayed.
- Executing [RESET] → [ALL DATA] from the menu will return the settings for the Viewer toolbar to the factory default.
- USB memory
  - Be sure to use a USB memory device formatted with the FAT32 or FAT16 file system.  
The projector does not support NTFS formatted USB memory.  
If the projector does not recognize your USB memory, check if the format is supported.  
To format your USB memory in your computer, refer to the document or help file that comes with your Windows.
  - We do not warrant that the USB-A port of the projector will support all USB memories in the market.
- Supported images
  - Supported file format for Viewer are as follows.  
We do not warrant all the images are supported for Viewer.  
Images other than mentioned in the table may not be supported.

Image type	Extension	Description
JPEG	JPG/JPEG	Baseline/Exif are supported

- Slideshow, effect, and sound effect set with PowerPoint cannot be played back.
- Image can be displayed at a resolution up to 10000 × 10000 pixels.
- Even if images are met by the above conditions, there may be some images which cannot be played back.
- More than 200 icons (total number of image file icons and folder icons) cannot be displayed in a thumbnail screen.
- Long file/folder name will be limited to the specified length. This can be shown by bracket added.
- If one folder has many files, it takes some time to play back.
- If a single folder contains too many files, switching images will take time. To shorten switching time, reduce the number of images contained in a single folder.

---

TIP: Exchangeable image file format (Exif) is a standard image file format used by digital cameras with the addition of specific shooting data.

---

## Projecting images stored in a USB memory device

This section explains the basic operation of the Viewer.

The explanation provides the operational procedure when the Viewer toolbar is set to the factory de-fault.

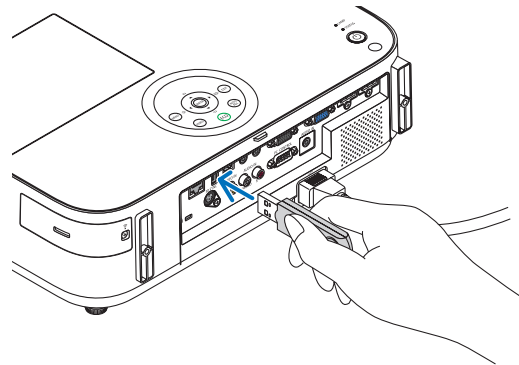
Preparation: Before starting the Viewer, store images to the USB memory using your computer.

### Starting the Viewer

1. Turn on the projector.

2. Insert the USB memory into the USB-A port of the projector.

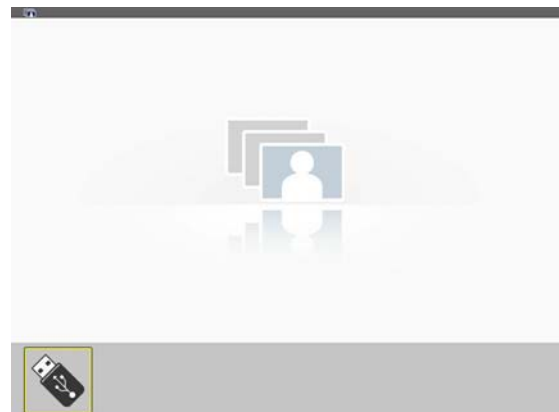
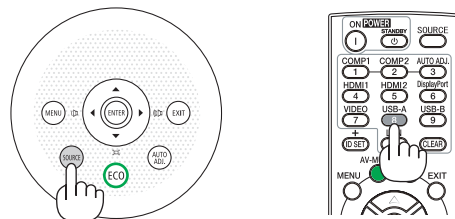
- Do not remove the USB memory from the projector while it's LED flashes. Doing so may corrupt the data.



3. Press the SOURCE button on the projector cabinet.

The Viewer start screen will be displayed.

- Press the USB-A button on the remote control.

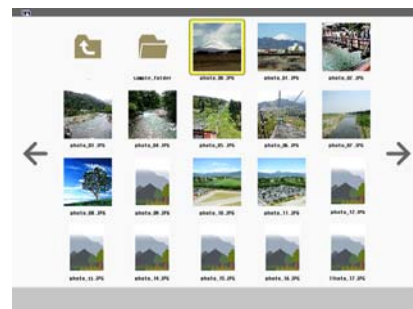
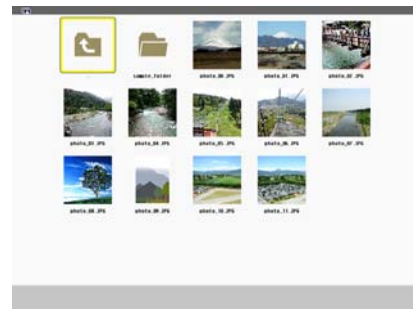


**4. Press the ENTER button.**

*The thumbnail screen will be displayed.*

**5. Use the ▲▼◀ or ▶ button to select an icon.**

- The → (arrow) symbol on the right indicates there are more pages. pressing the PAGE ▾ (page down) button will show the next page; pressing the PAGE △ (page up) will show the previous page.



**6. Press the ENTER button.**

*The selected slide will be displayed.*

- When a folder icon is selected, icons contained in the folder will be displayed.



**7. Press the ▶ button to select the next slide.**

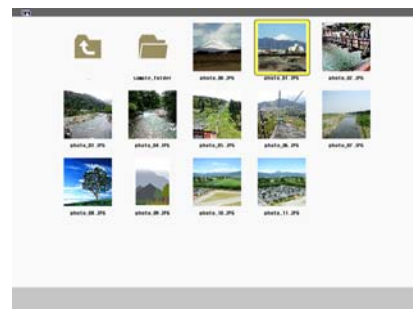
*The slide on the right will be displayed.*

- The ◀ or ▶ button can be used to select the next (right) slide or the previous (left) slide in the thumbnail screen.
- Pressing the MENU button during display of the thumbnail screen, the slide screen, or the slideshow screen will display the toolbar. The toolbar is used to select or rotate an slide.



**8. Press the EXIT button when the toolbar is not displayed.**  
**The thumbnail screen will be displayed.**

- Another way to display the thumbnail screen is to press the ENTER button.
- To close the toolbar, press the MENU button to return to the SOURCE list, and press the MENU button again to close the SOURCE list.

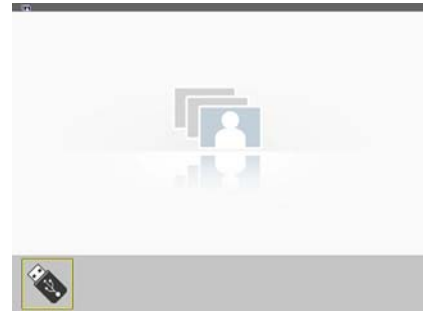


---

## Removing the USB memory from the projector

### 1. Select the VIEWER start screen.

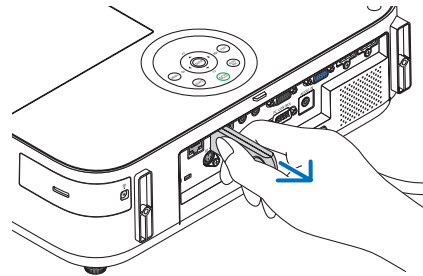
Press the EXIT button with no menu displayed.



### 2. Remove the USB memory from the projector.

Make sure that the LED on the USB memory is not flashing before removing the USB memory.

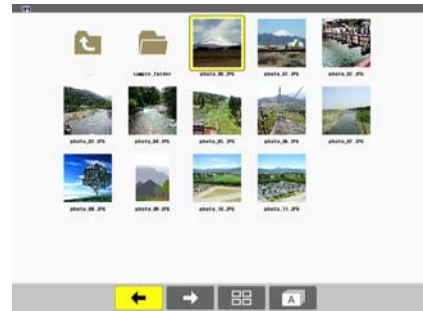
**NOTE:** If you remove the USB memory from the projector with a slide displayed, the projector may not operate correctly. If this happens, turn off the projector and unplug the power cord. Wait 3 minutes, then connect the power cord, and turn on the projector.



## Exiting the Viewer

### 1. Press the MENU button with the slide screen or the thumbnail screen displayed.

The control bar or the pop-up menu will be displayed.



### 2. Press the MENU button again.

The on-screen menu will be displayed.

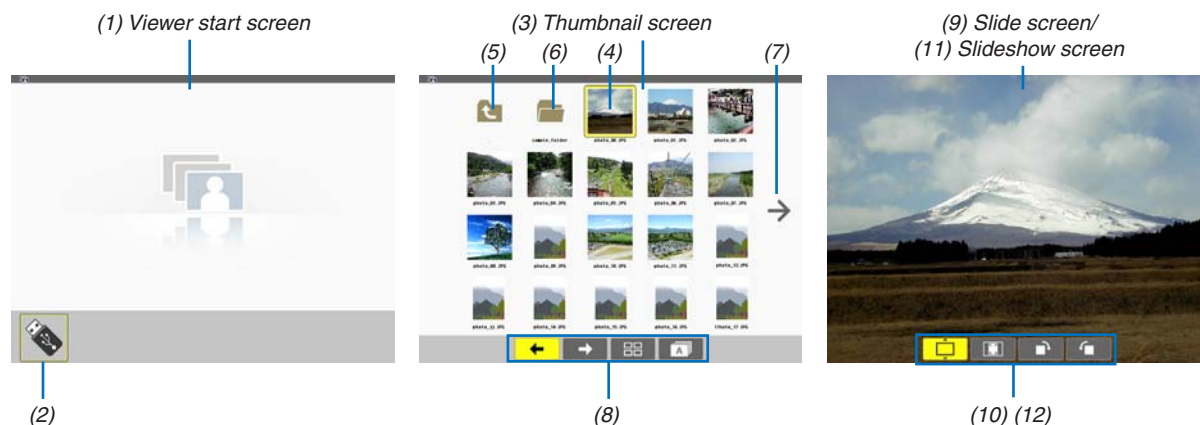
### 3. Select a source other than [USB-A] and press the ENTER button.

The Viewer will be exited.



## Parts of each screen

The Viewer has four screens.



Name	Description
(1) Viewer start screen	This screen will be displayed first when you select the Viewer.
(2) USB icon	This icon indicates that the USB memory is inserted into the projector.
(3) Thumbnail screen	This screen will show a list of folders and image files stored in the USB memory. The JPEG Exif files will be displayed in thumbnail screen only. <ul style="list-style-type: none"> <li>The maximum number of image files or folders within one page is different depending</li> </ul>
(4) Cursor	The cursor is used to select (highlight) the folder or image file by using ▲▼◀▶ button.
(5) Back icon	This icon is used to return to the upper (parent) folder.
(6) Folder icon	This icon shows that the USB memory has folders.
(7) Page up (Page down) icon	This icon shows further folders or image files are available in the next (previous) page. Use the ► button to go to the next (previous) row. The PAGE ▾ or PAGE ▴ on the remote control is used to go to the next or previous page directly.
(8) Thumbnail toolbar	This toolbar is used in the thumbnail screen. Pressing the MENU button will display this toolbar.
(9) Slide screen	This screen is used for manual playback. The selected image will be displayed in full screen.
(10) Slide toolbar	This toolbar is used in the slide screen. Pressing the MENU button will display this toolbar.
(11) Slideshow screen	This screen is used for auto playback. The slides will be changed automatically.
(12) Slideshow toolbar	This toolbar is used in the slideshow screen. Pressing the MENU button will display this toolbar.

## Using the toolbar

### 1. Press the MENU button.

The toolbar will be displayed.

The SOURCE screen will be displayed as Viewer connection screen.

### 2. Use the ◀ or ▶ button to select an item and use the ▲ or ▼ button to select its available option.

When the cursor is placed, the selected item will be changed to yellow.

The ▲ or ▼ shows more available choices.

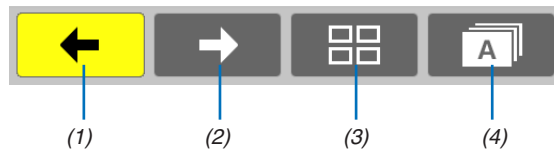
### 3. Press the ENTER button.

The selected item will be displayed.

### 4. Press the MENU button two times.

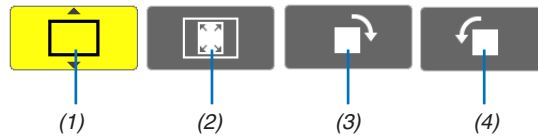
The toolbar will be closed and the SOURCE list will be displayed. Press the MENU button again to close the SOURCE list.








## Thumbnail toolbar



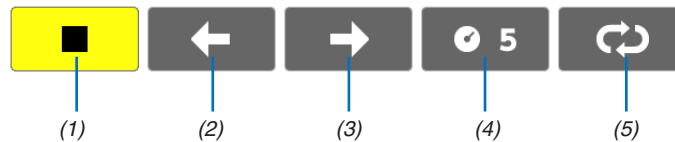
Menu	Options	Description	
(1) Back		—	Goes back to the previous image. When the cursor reaches the top left of the screen, it will go to the previous page.
(2) Forward		—	Goes to the next image. When the cursor reaches the bottom right of the screen, it will go to the next page.
(3) Display		—	Closes the menu and returns to the thumbnail screen.
		—	Closes the menu and starts the slideshow from the highlighted item.
		—	Closes the menu and displays the slide screen.
(4) Order		—	Displays the icons alphabetically by name. (number before alphabet)
		—	Displays the icons in descending order of file size.
		—	Displays the icons in the order of creation date







## Slide toolbar



Menu	Options	Description
(1) Display		Closes the menu and switches to the slide screen.
		Closes the menu and displays the thumbnail screen.
		Closes the menu and starts the slideshow from the highlighted item.
(2) Image display		Closes the menu and displays the image in its actual size.
		Closes the menu and displays the image in the projector's maximum resolution.
(3) Clockwise rotation	 —	Close the menu and rotate the image 90° clockwise
(4) Counter-clockwise rotation	 —	Close the menu and rotate the image 90° counter clockwise

## Slideshow toolbar



Menu	Options	Description
(1) Stop	 —	Closes the menu and changes to the slide screen.
(2) Back		Goes back to the previous image.
(3) Forward		Goes to the next image.
(4) Interval		Specifies interval time when playing back the slides.
(5) Repeat		Repeats to play back the images in the folder.
		Returns to the thumbnail screen.

### TIP:

- A picture icon at the center of the screen shows that the file cannot be displayed in the slide screen or thumbnail screen.
- Slide toolbar setting for rotation will be cancelled if the folder is moved from one place to another.

# Using On-Screen Menu

---

## Using the Menus

NOTE: The on-screen menu may not be displayed correctly while interlaced motion video image is projected.

---

1. Press the MENU button on the remote control or the projector cabinet to display the menu.



NOTE: The commands such as ENTER, EXIT, ▲▼, ◀▶ in the bottom show available buttons for your operation.

---

2. Press the ◀▶ buttons on the remote control or the projector cabinet to display the submenu.
3. Press the ENTER button on the remote control or the projector cabinet to highlight the top item or the first tab.
4. Use the ▲▼ buttons on the remote control or the projector cabinet to select the item you want to adjust or set.  
You can use the ◀▶ buttons on the remote control or the projector cabinet to select the tab you want.
5. Press the ENTER button on the remote control or the projector cabinet to display the submenu window.
6. Adjust the level or turn the selected item on or off by using the ▲▼◀▶ buttons on the remote control or the projector cabinet.  
Changes are stored until adjusted again.
7. Repeat steps 2 -6 to adjust an additional item, or press the EXIT button on the remote control or the projector cabinet to quit the menu display.

NOTE: When a menu or message is displayed, several lines of information may be lost, depending on the signal or settings.

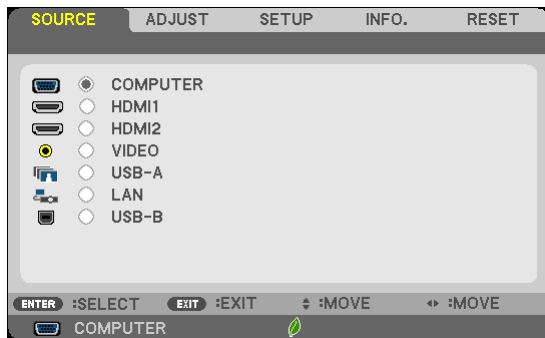
---

8. Press the MENU button to close the menu.  
To return to the previous menu, press the EXIT button.



---

## Menu Descriptions & Functions [SOURCE]



### COMPUTER

Selects the computer connected to your COMPUTER input connector signal.

NOTE: When the component input signal is connected to the COMPUTER IN connector, select [COMPUTER] respectively.

---

### HDMI1 and 2

Selects the HDMI compatible equipment connected to your HDMI 1 or HDMI 2 IN connector.

### VIDEO

Selects what is connected to your VIDEO input-VCR, DVD player or document camera.

### USB-A (Viewer)

This feature enables you to make presentations using a USB memory that contains slides.

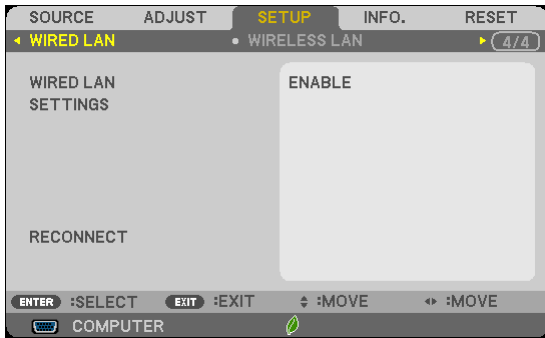
### LAN

Selects a signal from the LAN port (RJ-45) or the installed USB wireless LAN unit (optional).

### USB-B (USB Display)

Selects the computer connected to the USB-B port (type B) by using a commercially available USB cable.

## Setting up the Projector for a Wired LAN Connection [WIRED LAN]



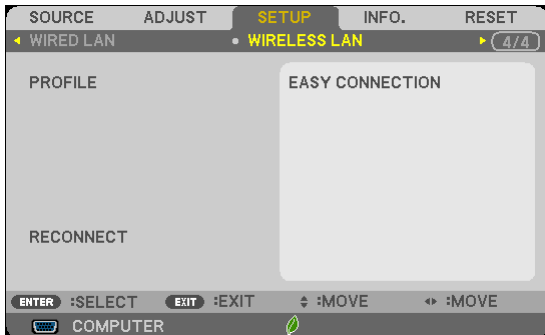
### Important

- Consult with your network administrator about these settings.
- When using a wired LAN connection, connect a LAN cable (Ethernet cable) to the LAN port (RJ-45) of the projector.

TIP: The network settings you make will not be affected even when [RESET] is done from the menu.

[WIRED LAN]	[DISABLE]	Wired LAN connection will be turned off.
	[ENABLE]	Wired LAN connection will be turned on.
[SETTINGS]	[DHCP]	ON..... IP address, subnet mask, and gateway will be automatically assigned to the projector from your DHCP server. OFF..... Specify IP address, subnet mask, and gateway assigned by your network administrator.
	[IP ADDRESS]	Set your IP address of the network connected to the projector.
	[SUBNET MASK]	Set your subnet mask number of the network connected to the projector.
	[GATEWAY]	Set the default gateway of the network connected to the projector.
	[AUTO DNS]	ON..... DHCP server will automatically assign IP address of DNS server connected to the projector. OFF..... Set your IP address of DNS server connected to the projector.
[RECONNECT]	Retry to connect the projector to a network.	

**Setting up the Projector for a Wireless LAN Connection (with the optional USB Wireless LAN Unit equipped) [WIRELESS LAN]**



**Important**

- Consult with your network administrator about these settings.
- When using a wireless LAN connection, attach the optional USB Wireless LAN to the projector.

[PROFILE]	[DISABLE]	Wireless LAN connection will be turned off
	[EASY CONNECTION]	Select [EASY CONNECTION] to execute a wireless LAN easily using Image Express Utility Lite on the supplied NEC Projector CD-ROM.
	[SIMPLE ACCESS POINT]	Set the projector for simple access point. Selecting [SIMPLE ACCESS POINT] will allow the projector to create an infrastructure network. The IP address of the projector will be set automatically. Select "Obtain an IP Address Automatically" to set the IP address of a connected computer. It takes a few seconds for a change of your computer's IP address to come into effect in Windows 7/Windows Vista while it takes one or two minutes in Window XP. When you connect with your computer to save your profile and select "Automatically connect when within range" from the Properties tab of Wireless Network in Windows for your selected profile, your wireless LAN will be accessed under the following conditions: <ul style="list-style-type: none"> <li>• at the time of turning on the computer or the projector</li> <li>• when the notebook type is within the range of the projector's wireless LAN can be achieved.</li> </ul> Data transmission between wireless LAN and wired LAN is not possible. When the [SIMPLE ACCESS POINT] mode is used to send images, it is recommended to connect to only one computer.
	[PROFILE 1] [PROFILE 2]	Up to two settings for the USB wireless LAN unit can be stored in memory of the projector. To recall the settings from memory, select [PROFILE 1] or [PROFILE 2] from [PROFILE].
[RECONNECT]	Retry to connect the projector to a network. Try this if you have changed [PROFILE].	

NOTE: After selecting [EASY CONNECTION] from [PROFILE], you cannot make settings to [DHCP], [IP ADDRESS], [SUBNET MASK], [GATEWAY], and [AUTO DNS] except [CHANNEL].

## Hints on How to Set Up LAN Connection

### To set up the projector for a LAN connection:

Access the HTTP server function to display the web browser and select [NETWORK SETTINGS] → [SETTINGS] → [WIRELESS LAN] → [PROFILE 1] or [PROFILE 2].

Two settings can be set for the USB Wireless LAN Unit.

Next select [SETTINGS] for your selected profile, and set [ENABLE] or [DISABLE] for [DHCP], [IP ADDRESS], [SUBNET MASK], and [GATEWAY]. Last click [SAVE]. To reflect changes, click the [SETTING] tab and then click [APPLY].

### To recall LAN settings stored in the profile number:

To use [PROFILE 1] or [PROFILE 2] set on the HTTP server, from the projector' menu, select [SETUP] → [WIRELESS LAN] → [PROFILE] → [PROFILE 1] or [PROFILE 2]. Last select [YES] and press the ENTER button.

### To connect a DHCP server:

From the projector menu, select [SETUP] → [WIRED LAN] → [SETTINGS] → [DHCP] → [ON] and press the ENTER button. To specify IP address without using the DHCP server, use the HTTP server function.

### To set only for wireless LAN (NETWORKTYPE and WEP/WPA):

Access the HTTP server function to display the web browser and select [NETWORK SETTINGS] → [SETTINGS] → [WIRELESS LAN] → [PROFILE 1] or [PROFILE 2].

Make necessary settings for [SETTINGS] and click [SAVE].

From the projector menu, select [SETUP] → [WIRELESS LAN] → [PROFILE] → [PROFILE 1] or [PROFILE 2].

### To select an SSID:

Access the HTTP server function to display the web browser and select [NETWORK SETTINGS] → [SETTINGS] → [WIRELESS LAN] → [CONNECTION] → [SITE SURVEY] and select the ID.

If you do not use [SITE SURVEY], type the SSID in [CONNECTION] and select [INFRASTRUCTURE] or [AD HOC].

### To receive lamp replacement time or error messages via e-mail:

Access the HTTP server function to display the web browser and select [NETWORK SETTINGS] → [ALERT MAIL], and set [SENDER'S ADDRESS], [SMTP SERVER NAME], and [RECIPIENT'S ADDRESS]. Last, click [SAVE].

### To execute [EASY CONNECTION] using Image Express Utility Lite:

The [EASY CONNECTION] is a mode that can abbreviate the troublesome LAN settings when using the Image Express Utility Lite and connecting the PC and projector via a wireless LAN.

The Image Express Utility Lite is contained on the supplied NEC Projector CD-ROM.

To use [EASY CONNECTION], access the HTTP server function to display the web browser and select [NETWORK SETTINGS] → [SETTINGS] → [WIRELESS LAN] → [EASY CONNECTION]. Next select [SETTINGS] → [CHANNEL]. Last click [SAVE].

From the projector menu, select [SETUP] → [WIRELESS LAN] → [PROFILE] → [EASY CONNECTION].

# Menu Descriptions & Functions [INFO.]

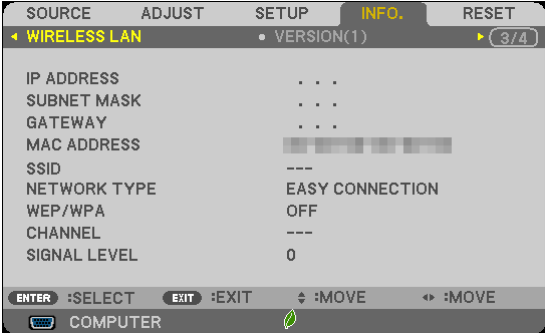
## [WIRED LAN]



[IP ADDRESS]  
[GATEWAY]

[SUBNET MASK]  
[MAC ADDRESS]

## [WIRELESS LAN]







[IP ADDRESS]  
[GATEWAY]  
[SSID]  
[WEP/WPA]  
[SIGNAL LEVEL]

[SUBNET MASK]  
[MAC ADDRESS]  
[NETWORK TYPE]  
[CHANNEL]

---

## Making Connections

- Select the source name for its appropriate input connector after turning on the projector.

Input connector	SOURCE button on the projector cabinet	Button on the remote control
COMPUTER IN	 COMPUTER	(COMP1)
HDMI 1 IN	 HDMI1	HDMI1
HDMI 2 IN	 HDMI2	HDMI2
USB-B	 USB-B	(USB-B)

---

NOTE: The projector is not compatible with video decoded outputs of the NEC ISS-6020 switcher.

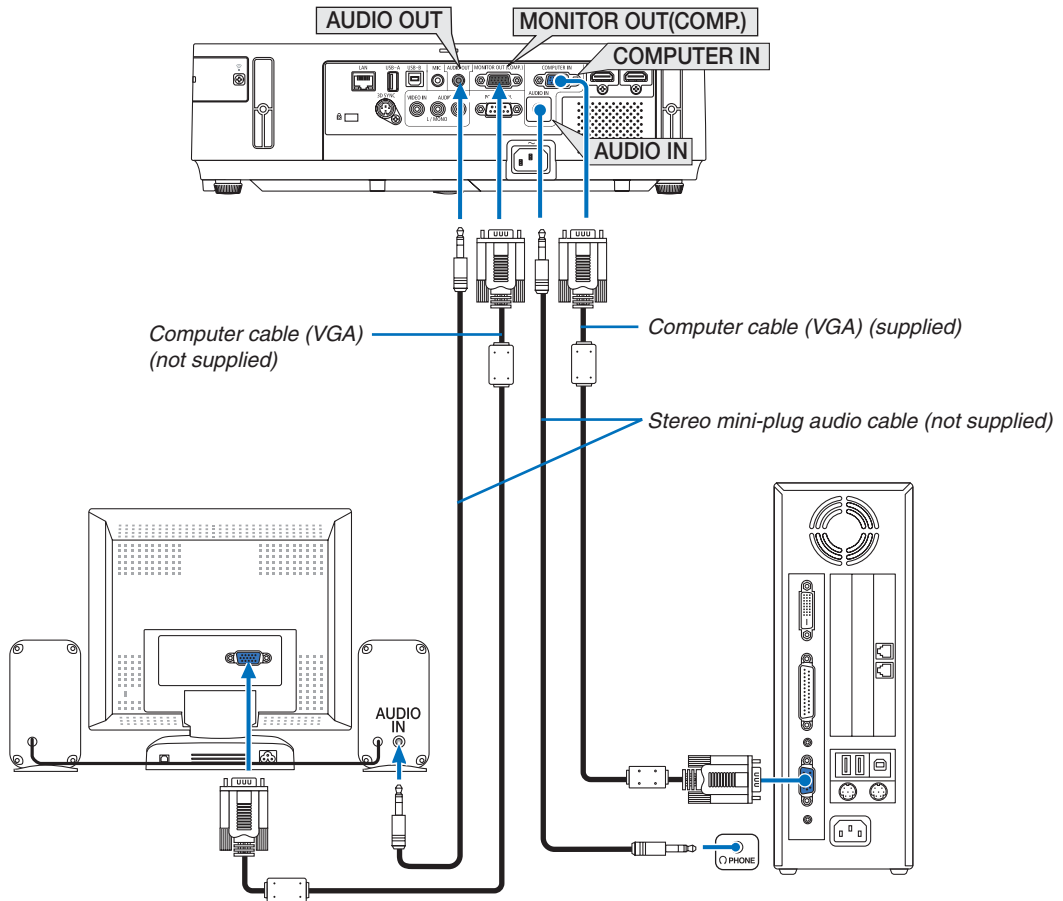
---

NOTE: An image may not be displayed correctly when a Video source is played back via a commercially available scan converter. This is because the projector will process a video signal as a computer signal at the default setting. In that case, do the following.

\* When an image is displayed with the lower and upper black portion of the screen or a dark image is not displayed correctly:  
Project an image to fill the screen and then press the AUTO ADJ. button on the remote control or the projector cabinet.

---

## Connecting an External Monitor



You can connect a separate, external monitor to your projector to simultaneously view on a monitor the computer analog image you're projecting.

### NOTE:

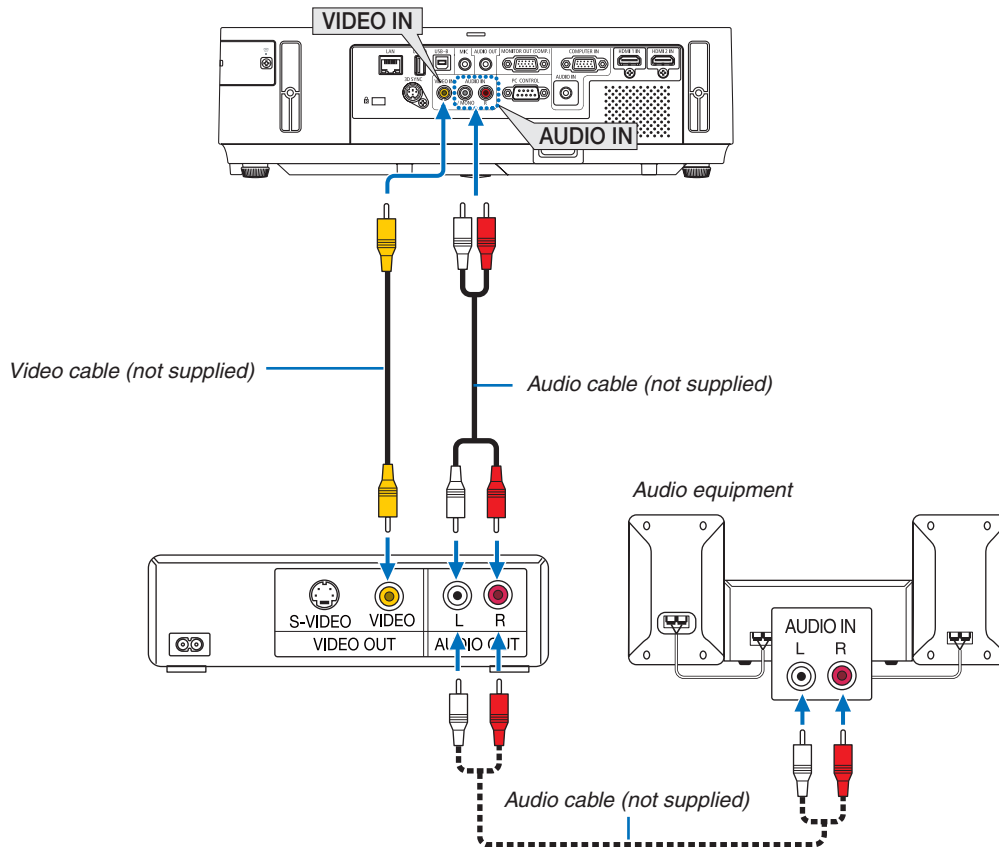
- Daisy chain connection is not possible.
- When audio equipment is connected, the projector speaker is disabled.

### Monitor out and sleep mode:


- The MONITOR OUT (COMP.) connector will not work when [NORMAL] is selected for [STANDBY MODE]. The MONITOR OUT (COMP.) connector will work only in the sleep mode.  
Applying a signal from the COMPUTER IN connector will put the projector in the sleep mode, which allows you to use the MONITOR OUT (COMP.) connector and the AUDIO OUT mini jack. Sound from the MIC input jack will be output to the AUDIO OUT mini jack.  
The sleep mode is one of the standby modes. The sleep mode cannot be selected from the menu.
- In the network standby mode, sound for the last viewed computer or video source will be heard. BNC-to- D-SUB converted signal will not be output in the standby mode and sleep mode.

## Connecting Your DVD Player or Other AV Equipment

### Connecting Video Input



- Select the source name for its appropriate input connector after turning on the projector.

Input connector	SOURCE button on the projector cabinet	Button on the remote control
VIDEO IN	 VIDEO	(VIDEO)

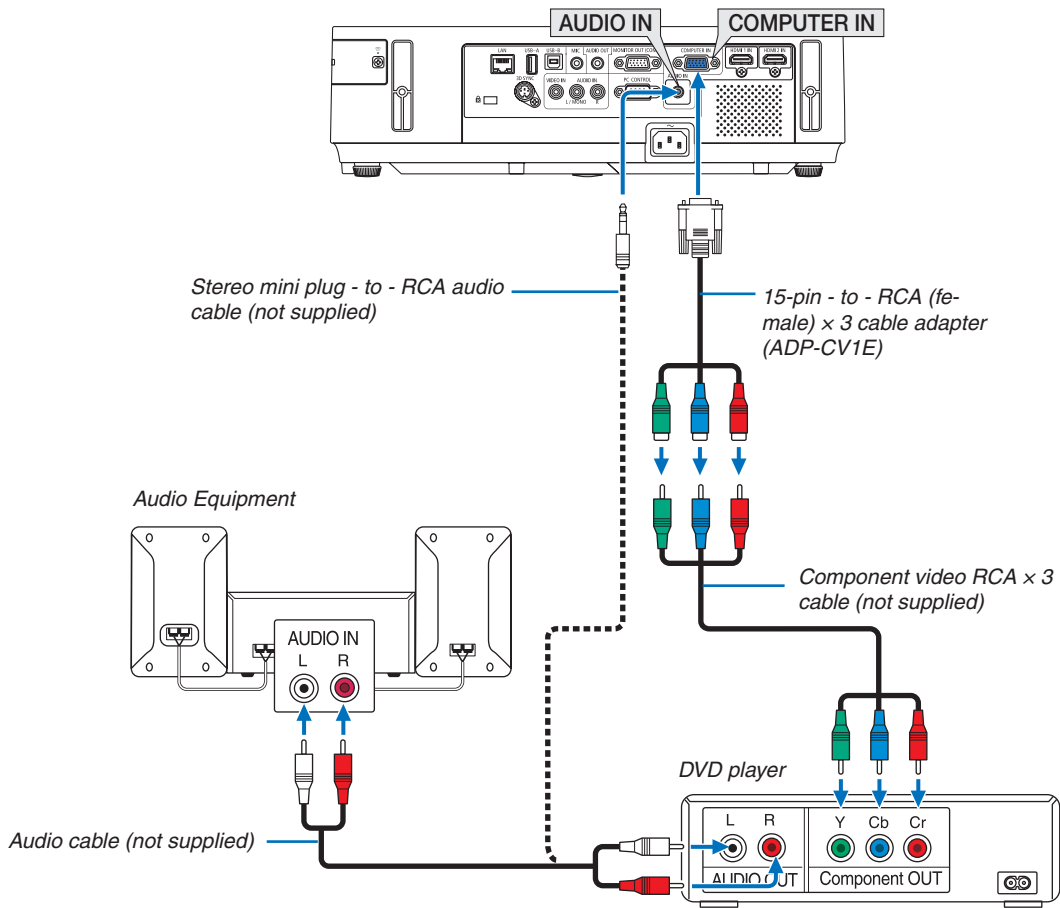
NOTE: The AUDIO IN L and R jacks (RCA) are shared between the Video inputs.

NOTE: Refer to your VCR owner's manual for more information about your equipment's video output requirements.


NOTE: An image may not be displayed correctly when a Video source is played back in fast-forward or fast-rewind via a scan converter.



## Connecting Component Input



- Select the source name for its appropriate input connector after turning on the projector.

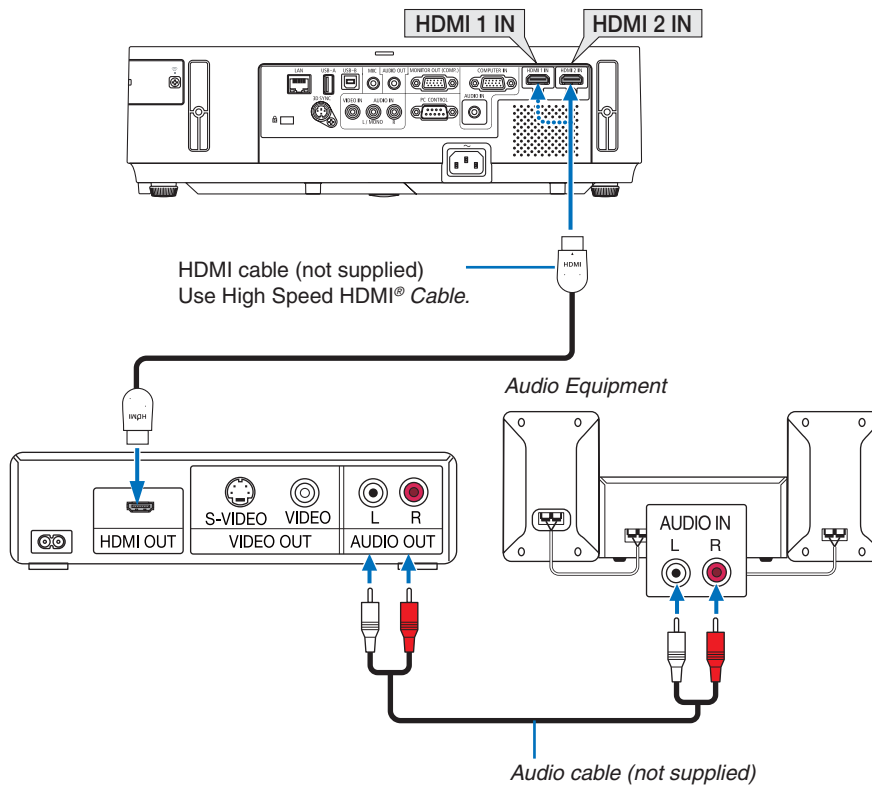
Input connector	SOURCE button on the projector cabinet	Button on the remote control
COMPUTER IN	 COMPUTER	(COMP1)



NOTE: Refer to your DVD player's owner's manual for more information about your DVD player's video output requirements.

## Connecting HDMI Input

You can connect the HDMI output of your DVD player, hard disk player, Blu-ray player, or notebook type PC to the HDMI IN connector of your projector.

NOTE: The HDMI IN connector supports Plug & Play (DDC2B).



Input connector	SOURCE button on the projector cabinet	Button on the remote control
HDMI 1 IN	 HDMI1	HDMI1
HDMI 2 IN	 HDMI2	HDMI2

TIP: For users of audio video equipment with an HDMI connector:

Select "Enhanced" rather than "Normal" if HDMI output is switchable between "Enhanced" and "Normal". This will provide improved image contrast and more detailed dark areas.

For more information on settings, refer to the instruction manual of the audio video equipment to be connected.

- When connecting the HDMI IN connector of the projector to the DVD player, the projector's video level can be made settings in accordance with the DVD player's video level. In the menu select [HDMI SETTINGS] → [VIDEO LEVEL] and make necessary settings.
- If the HDMI input sound cannot be heard, in the menu select [HDMI SETTINGS] → [AUDIO SELECT] → [HDMI1] or [HDMI2].

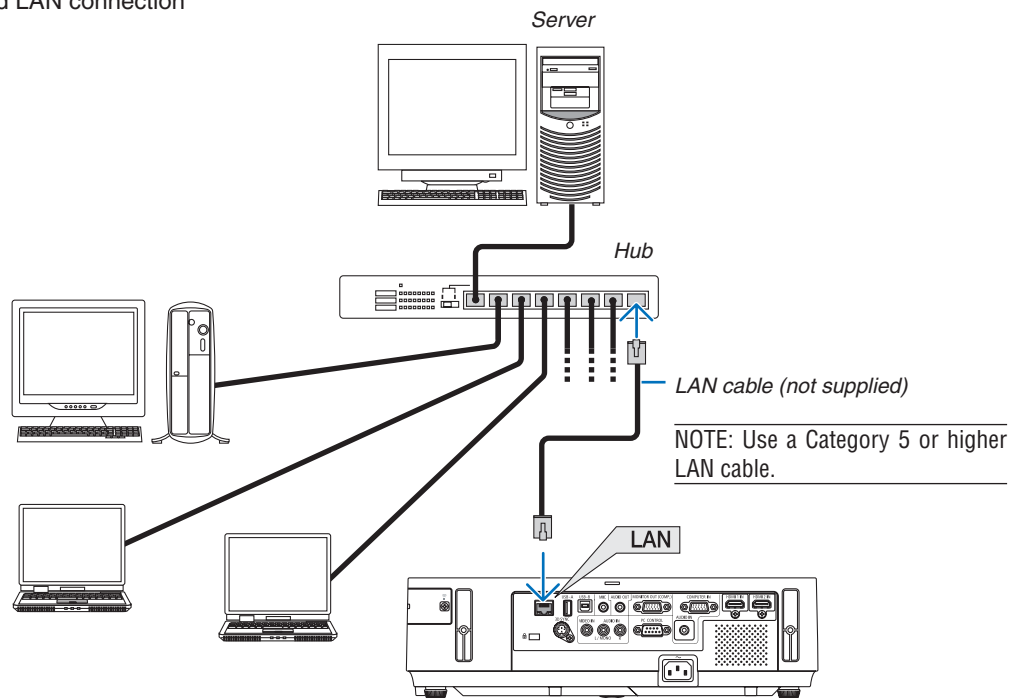
---

## Connecting to a Wired LAN

The projector comes standard with a LAN port (RJ-45) which provides a LAN connection using a LAN cable. To use a LAN connection, you are required to set the LAN on the projector menu. Select [SETUP] → [WIRED LAN].

### Example of LAN connection

Example of wired LAN connection



---

## Connecting to a Wireless LAN (Optional: NP05LM series)

The USB Wireless LAN Unit also provides a wireless LAN connection. To use a wireless LAN connection, you are required to assign an IP address to the projector.

### Important:

- If you use the projector with the USB Wireless LAN Unit in the area where the use of wireless LAN equipment is prohibited, remove the USB Wireless LAN Unit from the projector.
- Buy the appropriate USB Wireless LAN Unit for your country or area.

---

### NOTE:

- When the projector is turned on with the optional wireless LAN unit inserted, the indicator will light up blue and the green LED on the USB Wireless LAN Unit flashes to show that the USB Wireless LAN Unit is working.
  - Your computer's wireless LAN adapter (or unit) must be complied with Wi-Fi (IEEE802.11a/b/g/n) standard.
- 

## Flow of Setting Wireless LAN

**Step 1:** Attach the USB Wireless LAN Unit to the projector.

**Step 2:** Connect the computer to the projector via wired LAN.

Use the computer's browser to display the projector's HTTP server.

**Step 3:** Use an HTTP server to set the wireless LAN.

Access the HTTP server function to set [NETWORK SETTINGS] → [SETTINGS] → [WIRELESS] → [EASY CONNECTION], [SIMPLE ACCESS POINT], [PROFILE1] or [PROFILE2].

---

### NOTE:

- To use the HTTP server function, the projector must be connected to a network.  
First use the wired LAN to connect the projector to a network and then use the HTTP server to set the wireless LAN.
  - After setting the wireless LAN by using the HTTP server, set [NETWORK SETTINGS] → [SETTINGS] → [WIRED] → [DISABLE]
- 

## When switching to set on the projector after connecting to the wireless LAN:

Use the menu to set the wireless LAN connection for the projector.

Select [DISABLE], [EASY CONNECTION], [PROFILE1] or [PROFILE2] you set from the HTTP server.

## Attaching the USB Wireless LAN Unit

---

### NOTE:

- The USB Wireless LAN Unit must be inserted into the USB Wireless LAN Unit port in the correct direction. It cannot be inserted in the reverse direction. If the USB Wireless LAN Unit is inserted in the reverse direction with excessive force applied, the USB port may break.
  - Before touching the USB Wireless LAN Unit, touch a metallic object (such as a door knob or aluminum window frame) to discharge the static electricity from your body.
  - Always insert or remove the USB Wireless LAN unit when the main power is turned off. Failure to do so may cause projector malfunction or damage to the USB wireless LAN unit. If the projector will not work correctly, turn off the projector, disconnect the power cord, and then connect it again.
  - Do not insert other USB devices into the USB Wireless LAN unit port. Do not insert the USB Wireless LAN unit into the USB-B port (Type B).
-

---

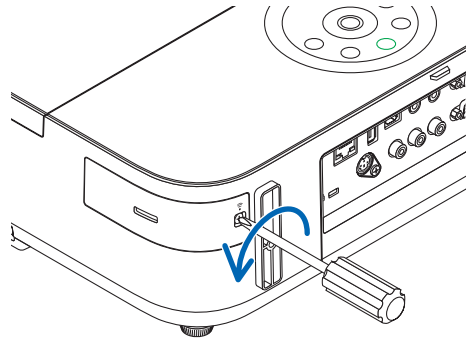
Prepare a Phillips screw driver beforehand.

**1. Press the POWER button to turn off the projector and set it into standby condition, and disconnect the power cord.**

**2. Remove the USB (LAN) port cover.**

*Loosen the screw securing the port cover.*

- The screw is not removable.



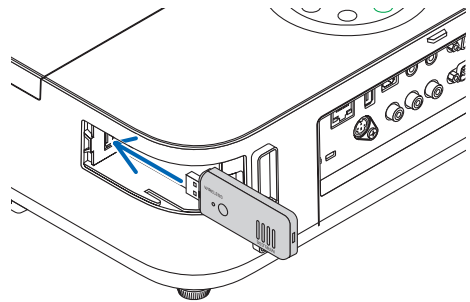
**3. Slowly insert the USB Wireless LAN Unit into the USB (LAN) port.**

*Remove the cap from the USB Wireless LAN Unit, and then insert it with the surface (side of indicator) facing outward. Keep the cap for later use.*

---

**NOTE:** Do not force to insert the USB Wireless LAN Unit.

---



**4. Put the USB (LAN) port cover back into place.**

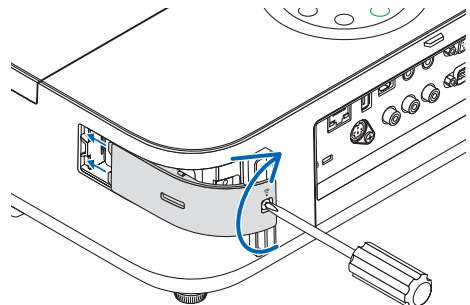
*Insert the catch of the USB (LAN) port cover into the groove of the projector cabinet, and then tighten the screw to secure the port cover.*

To remove the USB Wireless LAN Unit, disconnect the power cord and use the above procedure.

---

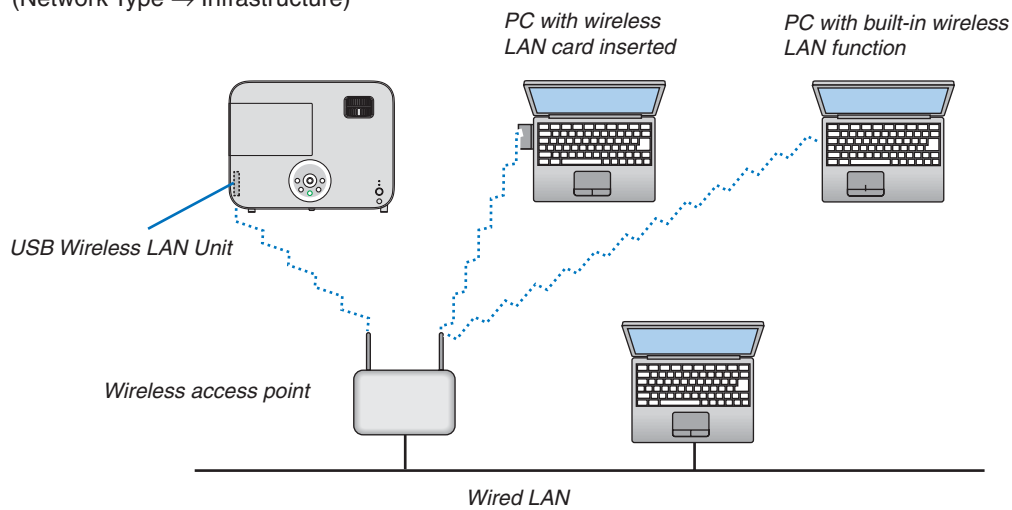
**NOTE:**

- The green LED on the USB Wireless LAN Unit flashes to show that Wireless LAN Unit is working. If the USB Wireless LAN Unit is incorrectly attached, the blue LED will not flash.
  - Do not press the button on the USB Wireless LAN Unit. The button will not work with this model.
- 



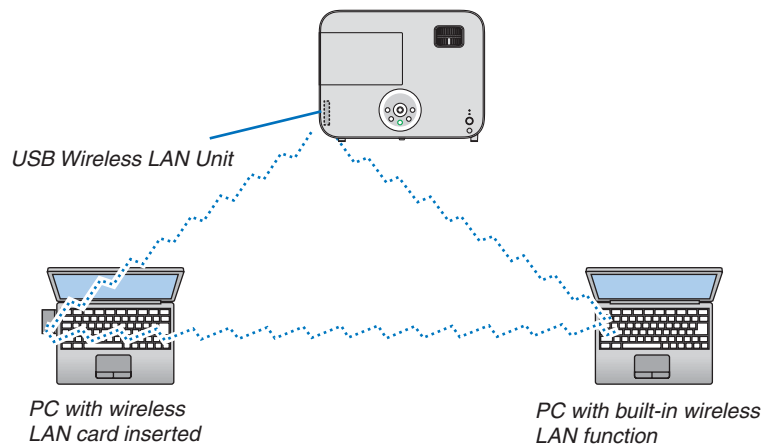
---

Example of wireless LAN connection  
(Network Type → Infrastructure)



Use the HTTP server function to make the settings.

Example of wireless LAN connection (Network Type → Ad Hoc)



To enable direct communication (i.e., peer-to-peer) between personal computers and projectors, you need to select the Ad Hoc mode.


Use the HTTP server function to make the settings.

## Specifications

### Electrical

Inputs	1 × RGB/Component (D-Sub 15 P), 2 × HDMI Type A (19P, HDMI® Connector) HDCP supported, 1 × Video (RCA), 1 × (L/R) RCA Audio, 1 × Stereo Mini Audio
Outputs	1 × RGB (D-Sub 15P), 1 × Stereo Mini Audio
PC Control	1 × PC Control Port (D-Sub 9P)
Wired LAN Port	1 × RJ-45 (10BASE-T/100BASE-TX)
Wireless LAN Port (Optional)	IEEE 802.11 a/b/g/n (optional USB Wireless LAN Unit required)
USB Port	1 × Type A, 1 × Type B
MIC Input	1 × Monaural Mini Audio

### Mechanical

Installation Orientation	Desktop/Front, Desktop/Rear, Ceiling/Front, Ceiling/Rear
Dimensions	14.5" (W) × 3.8" (H) × 11.3" (D) /368 mm (W) × 97.5 mm (H) × 286 mm (D) (not including protrusions)
Weight	7.7 lbs/3.5 kg
Environmental Considerations	Operational Temperatures : 41° to 104°F (5° to 40°C), (ECO mode selected automatically at 95°F to 104°F/35°C to 40°C) 20% to 80% humidity (non-condensing) Storage Temperatures : 14° to 122°F (-10° to 50°C), 20% to 80% humidity (non-condensing) Operating altitude: 0 to 2400 m/8000 feet (Set [FAN MODE] to [HIGH ALUTITUDE] when using the projector at altitudes approximately 1700 meters /5500 feet)
Regulations	UL/C-UL Approved (UL 60950-1, CSA 60950-1) Meets DOC Canada Class B requirements Meets FCC Class B requirements Meets AS/NZS CISPR.22 Class B Meets EMC Directive (EN55022, EN55024, EN61000-3-2, EN61000-3-3) 

For additional information visit:

US : <http://www.necdisplay.com/>

Europe : <http://www.nec-display-solutions.com/>

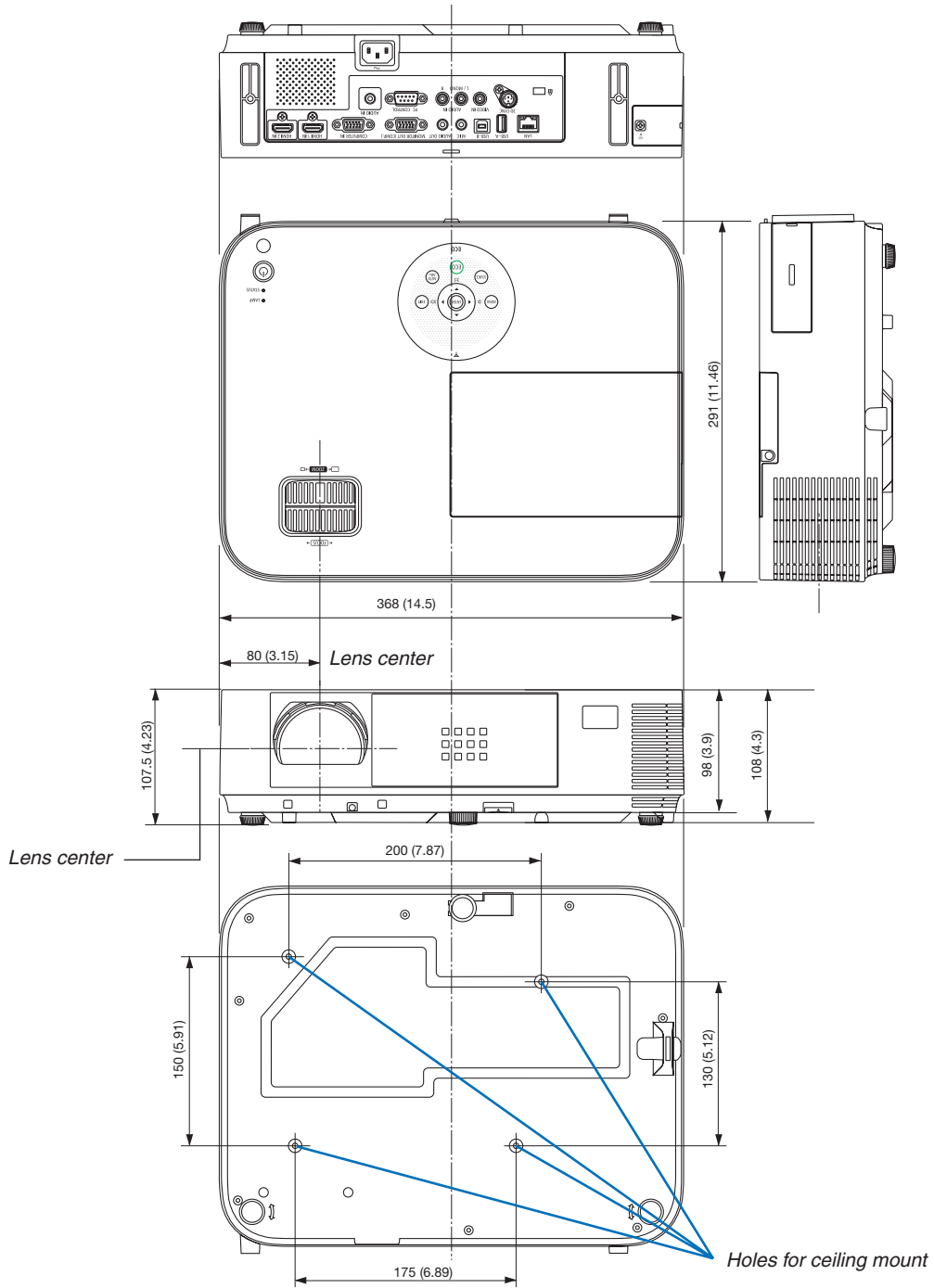
Global : <http://www.nec-display.com/global/index.html>

For information on our optional accessories, visit our website or see our brochure.

The specifications are subject to change without notice.

# Cabinet Dimensions

Unit: mm (inch)





**NEC**

## Important Information

### Table of Contents

1. Introduction.....	2
2. Table of Supported Areas and Countries.....	2
3. Cautions .....	10
4. Specifications .....	14

### 1. Introduction

Thank you purchasing the Wireless LAN Unit NP05LM1.  
Set the Wireless LAN Unit in the NEC Projector for use.  
For information on supported projectors, refer to our brochures.  
Refer to the user's manual that comes with the projector for installation or removal procedures and for how to set the wireless LAN.

#### ●Parts Included

- Wireless LAN Unit ..... 1
- Important Information (this document) ..... 1

### 2. Table of Supported Areas and Countries

Note that use with other than the combinations of the product names and supported countries and areas listed below may violate radio wave laws of the country where the device is used.

Veillez noter que toute autre combinaison de nom de produits et de régions et pays pris en charge que celles listées ci-après peut être contraire aux lois des émissions radio du pays où l'appareil est utilisé.

Tenga en cuenta que su utilización con combinaciones diferentes de las de los nombres de producto y los países y zonas aceptados que se enumeran a continuación pueden infringir las leyes de ondas radioeléctricas del país en el que se use el dispositivo.

Note que a utilização com outras combinações que não sejam as dos nomes do produto e os países e áreas suportados descritas abaixo, pode violar as leis sobre as ondas de rádio do país em que for utilizado o aparelho.

Product Name	Supported countries and areas
NP05LM1	Canada / Mexico / United States / Argentina / Brazil / Colombia / Ecuador / Peru

- Certificate marks and codes of the NP05LM1
- Certifications et codes des NP05LM1
- Marcas y códigos certificados de la NP05LM1
- Marcas e códigos certificados da NP05LM1

Mexico



La operación de este equipo está sujeta a las siguientes dos condiciones: (1) es posible que este equipo o dispositivo no cause interferencia perjudicial y (2) este equipo o dispositivo debe aceptar cualquier interferencia, incluyendo la que pueda causar su operación no deseada.

Argentina

CNC xxxxxx

Brazil



Este equipamento opera em caráter secundário, isto é, não tem direito à proteção contra interferência prejudicial, mesmo de estações do mesmo tipo e não pode causar interferência a sistemas operando em caráter primário.

### ●Federal Communication Commission Interference Statement

This device complies with Part 15 of the FCC Rules. Operation is subject to the following two conditions: (1) this device may not cause harmful interference, and (2) this device must accept any interference received, including interference that may cause undesired operation.

This equipment has been tested and found to comply with the limits for a Class B digital device, pursuant to Part 15 of the FCC Rules. These limits are designed to provide reasonable protection against harmful interference in a residential installation. This equipment generates, uses and can radiate radio frequency energy and, if not installed and used in accordance with the instructions, may cause harmful interference to radio communications. However, there is no guarantee that interference will not occur in a particular installation. If this equipment does cause harmful interference to radio or television reception, which can be determined by turning the equipment off and on, the user is encouraged to try to correct the interference by one of the following measures:

- Reorient or relocate the receiving antenna.
- Increase the separation between the equipment and receiver.
- Connect the equipment into an outlet on a circuit different from that to which the receiver is connected.
- Consult the dealer or an experienced radio/TV technician for help.

#### **FCC Caution:**

Any changes or modifications not expressly approved by the party responsible for compliance could void the user's authority to operate this equipment.

This transmitter must not be co-located or operating in conjunction with any other antenna or transmitter.

#### **Radiation Exposure Statement:**

This equipment complies with FCC radiation exposure limits set forth for an uncontrolled environment. This equipment should be installed and operated with minimum distance 20cm between the radiator & your body.

#### **Note:**

The country code selection is for non-US model only and is not available to all US model. Per FCC regulation, all WiFi product marketed in US must fixed to US operation channels only.

### ● Industry Canada Statement

This device complies with RSS-210 of the Industry Canada Rules. Operation is subject to the following two conditions: (1) this device may not cause harmful interference, and (2) this device must accept any interference received, including interference that may cause undesired operation.

Ce dispositif est conforme à la norme CNR-210 d'Industrie Canada applicable aux appareils radio exempts de licence. Son fonctionnement est sujet aux deux conditions suivantes: (1) le dispositif ne doit pas produire de brouillage préjudiciable, et (2) ce dispositif doit accepter tout brouillage reçu, y compris un brouillage susceptible de provoquer un fonctionnement indésirable.

#### Caution:

(i) the device for operation in the band 5150–5250 MHz is only for indoor use to reduce the potential for harmful interference to co-channel mobile satellite systems;

(ii) the maximum antenna gain permitted for devices in the bands 5250–5350 MHz and 5470–5725 MHz shall comply with the e.i.r.p. limit; and

(iii) the maximum antenna gain permitted for devices in the band 5725–5825 MHz shall comply with the e.i.r.p. limits specified for point-to-point and non point-to-point operation as appropriate.

(iv) Users should also be advised that high-power radars are allocated as primary users (i.e. priority users) of the bands 5250–5350 MHz and 5650–5850 MHz and that these radars could cause interference and/or damage to LE-LAN devices.

#### Avertissement:

Le guide d'utilisation des dispositifs pour réseaux locaux doit inclure des instructions précises sur les restrictions susmentionnées, notamment :

(i) les dispositifs fonctionnant dans la bande 5150–5250 MHz sont réservés uniquement pour une utilisation à l'intérieur afin de réduire les risques de brouillage préjudiciable aux systèmes de satellites mobiles utilisant les mêmes canaux;

(ii) le gain maximal d'antenne permis pour les dispositifs utilisant les bandes 5250–5350 MHz et 5470–5725 MHz doit se conformer à la limite de p.i.r.e.;

(iii) le gain maximal d'antenne permis (pour les dispositifs utilisant la bande 5725–5825 MHz) doit se conformer à la limite de p.i.r.e. spécifiée pour l'exploitation point à point et non point à point, selon le cas.

(iv) De plus, les utilisateurs devraient aussi être avisés que les utilisateurs de radars de haute puissance sont désignés utilisateurs principaux (c.-à-d., qu'ils ont la priorité) pour les bandes 5250–5350 MHz et 5650–5850 MHz et que ces radars pourraient causer du brouillage et/ou des dommages aux dispositifs LAN-EL.

**Radiation Exposure Statement:**

This equipment complies with IC radiation exposure limits set forth for an uncontrolled environment. This equipment should be installed and operated with minimum distance 20cm between the radiator & your body.

**Déclaration d'exposition aux radiations:**

Cet équipement est conforme aux limites d'exposition aux rayonnements IC établies pour un environnement non contrôlé. Cet équipement doit être installé et utilisé avec un minimum de 20 cm de distance entre la source de rayonnement et votre corps.

**●Regulatory Statement**

Operation of this device is subjected to the following National regulations and may be prohibited to use if certain restriction should be applied.

**●Cautions on security when using wireless LAN products**

With a wireless LAN, radio waves are used instead of LAN cables for the exchange of data between the wireless access points (computers, etc.), offering the advantage that LAN connections can be made freely within the range of the radio waves.

On the other hand, the radio waves reach all points within this range, regardless of walls or other obstacles, possibly resulting in the problems described below if the proper security measures are not taken.

**• Contents of transmissions may be intercepted**

Malicious third parties may purposely intercept the radio waves and steal information contained in the transmissions, including such personal information as ID numbers, passwords, credit card numbers, e-mail messages, etc.

**• Improper intrusions**

Malicious third parties may without permission access the personal or company network and steal personal or confidential information, pretend to be someone else and leak incorrect information, rewrite information that has been intercepted, introduce computer viruses or otherwise damage data or the system, etc.

Wireless LAN cards and wireless access points generally include security measures for dealing with these problems. Making the proper security settings before using the products can reduce the risk of such problems arising.

We recommend that you fully understand the problems that can arise when using the products without making the security settings, then that you make the security settings based on your own decision and at your own discretion.

In Brazil, the frequency bands of 2.4 GHz, 5180-5240 MHz, and 5260-5320 MHz are indoor use only.

In Colombia, Ecuador, and Peru, the frequency band of 5180-5240 MHz is indoor use only.

### ● Déclaration réglementaire

Cet appareil doit être utilisé conformément aux réglementations nationales suivantes, et l'utilisation peut être interdite en cas de certaines restrictions.

### ● Consignes de sécurité à respecter lors de l'utilisation des produits LAN sans fil

Avec un réseau local sans fil, des ondes radio sont utilisées à la place de câbles LAN pour l'échange de données entre les points d'accès sans fil (ordinateurs, etc.) ; l'avantage étant que les connexions LAN peuvent être exécutées librement dans la plage d'ondes radio. D'un autre point de vue, les ondes radio atteignent tous les points de cette plage, sans se soucier des murs ou tout autre obstacle, pouvant éventuellement conduire aux problèmes décrits ci-dessous, si des mesures de sécurité correctes ne sont pas prises.

- **Le contenu des transmissions peut être intercepté**

Des tierces personnes malveillantes peuvent intentionnellement intercepter les ondes radio et voler les informations contenues dans les transmissions, y compris les informations personnelles, telles que des numéros d'identification, les mots de passe, les numéros de carte de crédit, les courriers électroniques, etc.

- **Intrusions illégitimes**

Des tierces personnes malveillantes peuvent sans permission, accéder au réseau personnel ou de société et voler les informations personnelles ou confidentielles, prétendre être quelqu'un d'autre et faire passer des informations incorrectes, récrire des informations qui ont été interceptées, introduire des virus informatiques ou endommager de toute autre façon, les données ou le système, etc.

Les cartes LAN sans fil et les points d'accès sans fil comprennent généralement des mesures de sécurité pour éviter ces problèmes. Effectuer les bons réglages de sécurité avant d'utiliser les produits peut réduire le risque de l'apparition de tels problèmes.

Nous recommandons que vous compreniez complètement les problèmes qui peuvent se produire lors de l'utilisation de ces produits sans l'exécution des réglages de sécurité, et qu'alors vous exécutiez les réglages de sécurité en vous basant sur votre propre décision et selon votre choix.

Au Brésil, les bandes de fréquence de 2,4 GHz, 5180-5240 MHz et 5260-5320 MHz sont uniquement destinées à une utilisation en intérieur.

En Colombie, en Équateur et au Pérou, la bande de fréquence de 5180-5240 MHz est uniquement destinée à une utilisation en intérieur.

### ●Declaración normativa

La utilización de este dispositivo está sujeta a las siguientes normativas nacionales y su uso puede estar prohibido en el caso de que determinadas restricciones sean aplicables.

### ●Precauciones de seguridad durante el uso de productos de LAN inalámbrica

Con una LAN inalámbrica, se utilizan ondas de radio en lugar de cables LAN para el intercambio de datos entre los puntos de acceso inalámbrico (ordenadores, etc.), ofreciendo la ventaja de que las conexiones LAN se pueden realizar libremente dentro del campo de acción de las ondas de radio.

Por otro lado, las ondas de radio alcanzan a todos los puntos dentro de su campo de acción, sin importar las paredes o cualquier otro obstáculo, pudiendo ocasionar los problemas descritos a continuación si no se toman las medidas oportunas.

- **Los contenidos de las transmisiones pueden ser interceptados**  
Terceros pueden interceptar a propósito las ondas de radio y robar la información contenida en las transmisiones, incluyendo información personal como números de ID, contraseñas, números de tarjetas de crédito, mensajes de correo electrónico, etc.
- **Intrusiones no deseadas**  
Terceros pueden acceder sin permiso al personal o a la red de la empresa y robar información personal o confidencial, pretender ser otra persona y dejar información incorrecta, rescribir información que haya sido interceptada, introducir virus informáticos o dañar los datos o el propio sistema de cualquier modo, etc.

Las tarjetas LAN inalámbricas y los puntos de acceso inalámbricos suelen incluir medidas de seguridad para solucionar estos problemas. Tomar las medidas de seguridad adecuadas antes de utilizar los productos puede reducir el riesgo de aparición de estos problemas.

Recomendamos que conozca los problemas que pueden surgir al usar estos productos si no se toman las medidas de seguridad adecuadas, luego, usted podrá establecer las medidas que considere oportunas según su propio criterio.

En Brasil, las bandas de frecuencia de 2,4 GHz, 5180-5240 MHz y 5260-5320 MHz son para uso en interiores únicamente.

En Colombia, Ecuador y Perú, la banda de frecuencia de 5180-5240 MHz es para uso en interiores únicamente.



### ● **Declaração de regulamentação**

A operação deste dispositivo está sujeita às seguintes Normas nacionais, e seu uso pode ser proibido se for necessária a aplicação de determinadas restrições.

### ● **Precauções com a segurança ao utilizar produtos LAN sem fios**

Com uma LAN sem fios, são utilizadas as ondas de rádio em vez de cabos LAN para a troca de dados entre os pontos de acesso sem fios (computadores, etc.), oferecendo a vantagem das ligações LAN poderem ser efectuadas livremente dentro da gama das ondas de rádio.

Por outro lado, as ondas de rádio chegam a todos os pontos dentro dessa gama, independentemente da existência de paredes ou outros obstáculos, resultando provavelmente nos problemas descritos abaixo se não forem tomadas as medidas de segurança adequadas.

- **Conteúdos de transmissões podem ser interceptados**  
Pessoas mal intencionadas podem interceptar as ondas de rádio de propósito e roubar as informações contidas nas transmissões, incluindo informações pessoais como números de BI, palavras-passe, números de cartões de crédito, mensagens de e-mail, etc.
- **Intrusões indevidas**  
Pessoas mal intencionadas podem, sem autorização, aceder à rede pessoal ou empresarial e roubar informações pessoais ou confidenciais, fingir ser outra pessoa e deixar passar informações incorrectas, voltar a escrever informações que foram interceptadas, introduzir vírus informáticos, danificar dados ou o sistema, etc.

As placas LAN sem fios e os pontos de acesso sem fios incluem geralmente medidas de segurança para lidar com estes problemas. Fazer as definições de segurança adequadas antes de utilizar os produtos pode reduzir o risco de aparecimento desses problemas.

Recomendamos que compreenda inteiramente os problemas que podem surgir ao utilizar os produtos sem fazer as definições de segurança, e que depois faça as suas definições de segurança com base nas suas próprias decisões e como desejar.

No Brasil, as bandas de frequências de 2,4 GHz, 5180-5240 MHz e 5260-5320 MHz são apenas para uso interno.

Na Colômbia, no Equador e no Peru, a banda de frequência de 5180-5240 MHz é apenas para uso interno.

### **3. Cautions**

#### **●Cautions on Usage**

##### **Warning**

- The Wireless LAN Unit is not meant for use with facilities or equipment involving the safeguard of human life, such as medical equipment, nuclear facilities or equipment, aeronautical or space equipment, transportation facilities or equipment, etc., or with facilities or equipment requiring high levels of reliability. Do not use the Wireless LAN Unit in such cases.
- Do not use the Wireless LAN Unit near cardiac pacemakers.
- Do not use the Wireless LAN Unit near medical equipment. Doing so may cause electromagnetic interference with the medical equipment, possible leading to death.
- Do not disassemble or modify the Wireless LAN Unit in any way. Doing so could lead to fire or electric shock.
- Do not use the Wireless LAN Unit in wet or moist places, such as in bathrooms or near humidifiers. Doing so could lead to fire, electric shock or malfunction.

##### **Caution**

- To prevent damage due to static electricity, eliminate any static electricity from your body before touching the Wireless LAN Unit.
- Static electricity from the human body may damage the Wireless LAN Unit. Before touching the Wireless LAN Unit, touch an aluminum sash, a door knob, or some other metal object around you to eliminate the static electricity.

##### **Caution**

The radio waves used by the Wireless LAN Unit pass through the wood or glass used in normal homes (but not through window panes with built-in metallic mesh).

The radio waves do not pass through iron reinforcing bars, metal or concrete, however, so the Wireless LAN Unit cannot be used for communicating through walls or floors made with these materials.

## ●Précautions à prendre lors de l'utilisation

### **Avertissement**

- Cette unité LAN sans fil ne doit pas être utilisée sur des installations ou des équipements impliquant la sauvegarde de la vie humaine, tels que des équipements médicaux, des installations ou équipements nucléaires, des équipements spatiaux ou aérospatiaux, des installations ou des équipements de transport, etc., ou sur des installations ou des équipements nécessitant de hauts niveaux de fiabilité. N'utilisez pas Unité LAN sans fil dans de tels cas.
- N'utilisez pas Unité LAN sans fil près de stimulateurs cardiaques.
- N'utilisez pas Unité LAN sans fil près d'équipements médicaux. Le non-respect de cette précaution peut causer des interférences électromagnétiques avec l'équipement médical, conduisant éventuellement à la mort.
- Ne démontez pas ou ne modifiez pas Unité LAN sans fil de n'importe quelle façon. Le non-respect de cette précaution peut conduire à des incendies ou des chocs électriques.
- N'utilisez pas Unité LAN sans fil dans des endroits humides ou mouillés, tels que des salles de bain ou près d'humidificateurs. Le non-respect de cette précaution peut conduire à des incendies, des chocs électriques ou un dysfonctionnement.

### **Précaution**

Pour éviter tout dégât dû à l'électricité statique, éliminez toute électricité statique de votre carte avant de toucher Unité LAN sans fil.

- L'électricité statique du corps humain peut endommager Unité LAN sans fil. Avant de toucher Unité LAN sans fil, touchez un cadre en aluminium, un bouton de porte ou tout autre objet métallique se trouvant à proximité pour éliminer l'électricité statique.

### **Précaution**

Les ondes radio utilisées par Unité LAN sans fil passent à travers le bois ou le verre utilisés dans les habitations normales (mais pas à travers les fenêtres avec un treillis métallique intégré). Les ondes radio ne passent pas à travers les barres renforcées en fer, le métal ou le béton; Unité LAN sans fil ne peut donc pas être utilisée pour la communication entre des murs ou des sols fabriqués avec ces matériaux.

## ●Precauciones de uso

### Advertencia

- La Unidad LAN inalámbrica no está diseñada para su uso en centros o equipos que impliquen el cuidado de una vida humana, como equipos médicos, centrales o equipos nucleares, equipos aeronáuticos o espaciales, centros o equipos de transporte, etc., o en centros o equipos que necesiten un alto nivel de fiabilidad. No utilice la Unidad LAN inalámbrica en dichos casos.
- No utilice la Unidad LAN inalámbrica cerca de un marcapasos.
- No utilice la Unidad LAN inalámbrica cerca de equipos médicos. De hacerlo, se podría producir una interferencia electromagnética con el equipo médico, provocando posiblemente la muerte.
- No desmonte ni modifique la Unidad LAN inalámbrica de ningún modo. Hacerlo podría provocar un incendio o una descarga eléctrica.
- No utilice la Unidad LAN inalámbrica en lugares mojados o húmedos, como cuartos de baño o cerca de humidificadores. Hacerlo podría provocar un incendio, una descarga eléctrica o una avería.

### Precaución

Para evitar daños debidos a la electricidad estática, elimine cualquier electricidad estática de su cuerpo antes de tocar la Unidad LAN inalámbrica.

- La electricidad estática del cuerpo humano podría dañar la Unidad LAN inalámbrica. Antes de tocar la Unidad LAN inalámbrica, toque un marco de ventana de aluminio, la manilla de una puerta o cualquier otro objeto metálico para eliminar la electricidad estática.

### Precaución

Las ondas de radio utilizadas por esta Unidad LAN inalámbrica atraviesan la madera o el cristal utilizados en las casas normales (aunque no los paneles de cristal de las estructuras metálicas).

Las ondas de radio no atraviesan las barras de refuerzo de hierro, metal u hormigón, por lo que la Unidad LAN inalámbrica no puede utilizarse para comunicarse a través de paredes o suelos fabricados con esos materiales.

## ●Precauções de utilização

### **Aviso**

- A Unidade LAN sem fios não deve ser utilizada em instalações ou equipamentos que envolvam a protecção da vida humana, tais como equipamentos médicos, instalações ou equipamentos nucleares, equipamentos aeronáuticos ou espaciais, instalações ou equipamentos de transporte, etc., ou em instalações ou equipamentos que exijam elevados níveis de fiabilidade. Não utilize a Unidade LAN sem fios nestes casos.
- Não utilize a Unidade LAN sem fios perto de pacemakers.
- Não utilize a Unidade LAN sem fios perto de equipamentos médicos. Ao fazê-lo, pode provocar uma interferência electromagnética com os equipamento médicos, podendo levar à morte.
- Nunca desmonte nem modifique a Unidade LAN sem fios. Ao fazê-lo, pode provocar um incêndio ou choque eléctrico.
- Não utilize a Unidade LAN sem fios em locais molhados ou húmidos, tais como casas de banho ou perto de humidificadores. Ao fazê-lo, pode provocar um incêndio, choque eléctrico ou avaria.

### **Precaução**

Para evitar danos provocados pela electricidade estática, elimine qualquer electricidade estática do seu corpo antes de tocar na Unidade LAN sem fios.

- A electricidade estática do corpo humano pode danificar a Unidade LAN sem fios. Antes de tocar na Unidade LAN sem fios, toque numa calha de alumínio, na maçaneta de uma porta ou em qualquer outro objecto de metal à sua volta para eliminar a electricidade estática.

### **Precaução**

As ondas de rádio utilizadas pela Unidade LAN sem fios passam através da madeira e do vidro utilizados em casas normais (mas não passam através das vidraças com redes metálicas integradas).

As ondas de rádio não passam através de barras de reforço de ferro, metal ou cimento; no entanto, a Unidade LAN sem fios não pode ser utilizada para comunicar através de paredes ou pavimentos feitos com estes materiais.

#### 4. Specifications

Specifications	
Operating Voltage	5V (power supplied from the projector)
MAX Amps	XXX mA
Interface	USB 2.0 (connected to USB wireless LAN port on the projector)
Dimensions	Width: 1.1" / 28 mm Height: 0.43" / 11 mm Depth: 3.19" / 81 mm (including the cap)
Weight	0.049 lbs / 22 g (including the cap)
Environmental Considerations	Operational Temperatures : 41° to 104°F / 5° to 40°C, 20% to 80% humidity (non-condensing) Storage Temperatures : 14° to 122°F (-10° to 50°C), 20% to 80% humidity (non-condensing)

## **Federal Communication Commission Interference Statement**

This device complies with Part 15 of the FCC Rules. Operation is subject to the following two conditions: (1) This device may not cause harmful interference, and (2) this device must accept any interference received, including interference that may cause undesired operation.

This equipment has been tested and found to comply with the limits for a Class B digital device, pursuant to Part 15 of the FCC Rules. These limits are designed to provide reasonable protection against harmful interference in a residential installation. This equipment generates, uses and can radiate radio frequency energy and, if not installed and used in accordance with the instructions, may cause harmful interference to radio communications. However, there is no guarantee that interference will not occur in a particular installation. If this equipment does cause harmful interference to radio or television reception, which can be determined by turning the equipment off and on, the user is encouraged to try to correct the interference by one of the following measures:

- Reorient or relocate the receiving antenna.
- Increase the separation between the equipment and receiver.
- Connect the equipment into an outlet on a circuit different from that to which the receiver is connected.
- Consult the dealer or an experienced radio/TV technician for help.

FCC Caution: Any changes or modifications not expressly approved by the party responsible for compliance could void the user's authority to operate this equipment.

This transmitter must not be co-located or operating in conjunction with any other antenna or transmitter.

### **Radiation Exposure Statement:**

This equipment complies with FCC radiation exposure limits set forth for an uncontrolled environment. This equipment should be installed and operated with minimum distance 20cm between the radiator & your body.

### **FOR COUNTRY CODE SELECTION USAGE (WLAN DEVICES)**

Note: The country code selection is for non-US model only and is not available to all US model. Per FCC regulation, all WiFi product marketed in US must fixed to US operation channels only.

**Industry Canada statement:**

This device complies with RSS-210 of the Industry Canada Rules. Operation is subject to the following two conditions: (1) This device may not cause harmful interference, and (2) this device must accept any interference received, including interference that may cause undesired operation.

Ce dispositif est conforme à la norme CNR-210 d'Industrie Canada applicable aux appareils radio exempts de licence. Son fonctionnement est sujet aux deux conditions suivantes: (1) le dispositif ne doit pas produire de brouillage préjudiciable, et (2) ce dispositif doit accepter tout brouillage reçu, y compris un brouillage susceptible de provoquer un fonctionnement indésirable.

**Caution :**

the device for operation in the band 5150-5250 MHz is only for indoor use to reduce the potential for harmful interference to co-channel mobile satellite systems;

**Avertissement:**

les dispositifs fonctionnant dans la bande 5 150-5 250 MHz sont réservés uniquement pour une utilisation à l'intérieur afin de réduire les risques de brouillage préjudiciable aux systèmes de satellites mobiles utilisant les mêmes canaux;

**Radiation Exposure Statement:**

This equipment complies with IC radiation exposure limits set forth for an uncontrolled environment. This equipment should be installed and operated with minimum distance 20cm between the radiator & your body.

**Déclaration d'exposition aux radiations:**

Cet équipement est conforme aux limites d'exposition aux rayonnements IC établies pour un environnement non contrôlé. Cet équipement doit être installé et utilisé avec un minimum de 20 cm de distance entre la source de rayonnement et votre corps.