

# D-Link Quick Installation Guide

## DWL-G520I Internal Antenna Installation

### Before You Begin

- Make sure to turn off your computer and unplug the power cord.

**1**

Remove the front plastic cover from the computer.



**2**

Identify an antenna installation location:

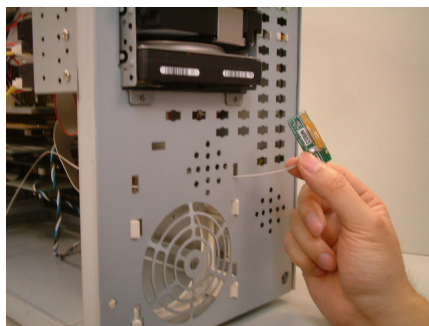
- A. High on the metal front of the chassis.
- B. Use a clearance area which will not interfere with the plastic cover.

**3**

Carefully guide the antenna cable through the desired aperture towards the PCI slots.

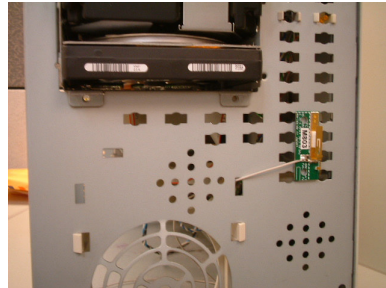
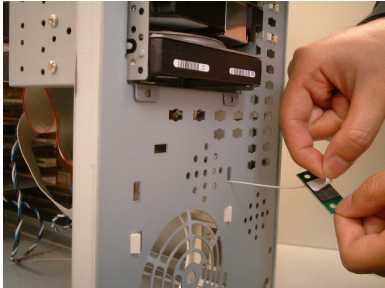
**4**

Verify proper clearance exists between the metal and front plastic cover.



5

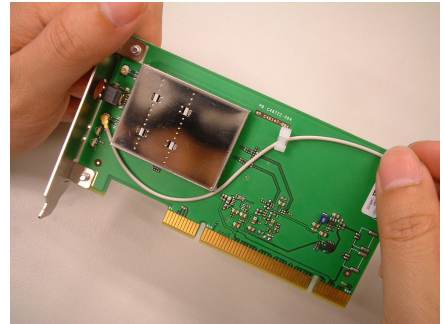
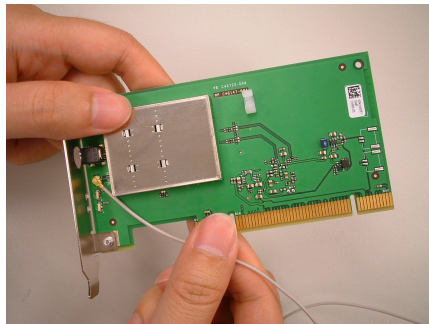
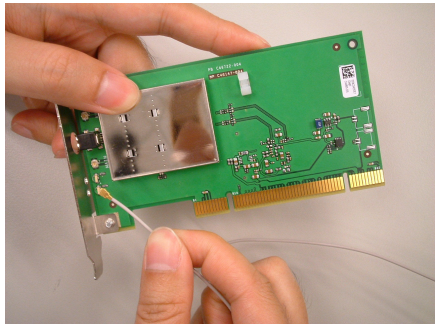
**Pull the cable taut, expose the adhesive on the antenna, and affix the antenna less than 2cm from the cable hole on the clean metal surface.**



6

**Attach the antenna cable to the DWL-G520I by gently pushing it into the on-board connector.**

Attach the antenna cable



7

**Install the DWL-G520I carefully and firmly seat it into an available PCI slot (may require removing an existing bracket on the computer back panel).**



**8**

**Secure the DWL-G520I PCI bracket to the computer back panel.**

**9**

**Ensure the cable is clear of sharp corners or edges, away from wide ribbon cables, and secure as needed.**

**10**

**Replace the computer front plastic cover.**

