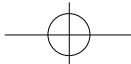


Copyright Notices

Information in this document is subject to change without notice and represent a commitment on the part of AMAC TEK CO., LTD. No part of this manual may be reproduced or transmitted in any form or by any means, electronic or mechanical, including photocopying and recording, for any purpose without the written permission of AMAC TEK CO., LTD. The software described in this document is furnished under a license agreement and may be used or copied only in accordance with the terms of the license agreement. It is agreement the law to copy the software on any other medium except as specifically allowed in the license agreement. The licensee may make one copy of the software for backup purpose.

Copyright 2004 by AMAC TEK CO., LTD
All rights reserved.



FCC Information

This equipment has been tested and found to comply with limits for a class B digital device, pursuant to Part 15 of the FCC Rules. These limits are designed to provide reasonable protection against harmful interference in a residential installation. This equipment generates, uses and can radiates radio frequency energy and, if not installed and used in accordance with the instructions, may cause harmful interference to radio Communications, However, there is no guarantee that interference will not occur in a particular installation. If this equipment does cause unacceptable interference to radio or television reception, which can be determined by turning the equipment off and on, the user is encouraged to try to correct the interference by one or more of the following measures.

1. Reorient or relocate the receiving antenna.
2. Increase the separation between the equipment and receiver.
3. Connect the equipment into an outlet on a circuit different from that to which the receiver is connected.
4. Consult the dealer or an experienced Radio / TV technician for help

CAUTION : Any changes or modifications in construction of this device which are not expressly approved by the party responsible for compliance could void the user's authority to operate the equipment.

Certificated Of Conformity

1. Company : **AMAC TEK CO., LTD**
3rd Floor, Seyo Bldg, 161-8, Samsung -Dong,
Kangnam-Gu, Seoul, Korea 135-881
2. Model Name : HAN-250X
3. FCC Compliance Statement:
This device complies with part 15 of FCC Rules.
Operation is subject to the following two conditions:
(1) This device may not cause harmful interference, and
(2) This device must accept any interference received, including interference that may cause undesired operation.
4. CE Rules : Product with the CE Marking comply with both the EMC Directive (89/336/EEC) and the amendments (91/263/EEC) issued by the Commission of the European community. Compliance with these directives implies conformity to the following European Norms:
 - EN55022 + A1 : 2000 --- Information Technology Equipment - Radio disturbance
 - EN55024 : 1998 --- Information Technology Equipment - Immunity
 - EN55013 + A14 : 1999 --- Sound and television broadcast receivers and equipment - Radio disturbance

Content

Features & Others

Features	01
Enclosures	02
Play Overview	03
LCD Display	04

Required Environment for users

PC System Requirements	05
Required Software by OS(Operating System)	05
Software Installation Guide For Additional Functions	06

To Upload/Download

To connect to PC	08
To upload/Download the files	08
To format	10
To disconnect from PC(Windows 98SE / ME)	10
To disconnect from PC(Windows 2000 / XP)	11

To listen to MP3 / WMA Music Files

To listen to Music	
How to turn the POWER ON/OFF, PLAY/STOP	12
To control Volume	12
Repeat Function for the Slected Area(A-B)	13
HOLD	13

MENU Functions

Equalizer(EQ) Setting Up	14
Repeat Setting Up	14
Playback Speed Control	14
Record/Encode Setting up	15

Power Saving Function

To search Directory

To move from file to file	15
To move to the Subfolder	15
To move to the Upfolder	15

Content

To Record / Encode

How to record	16
To record with MIC	16
To encode from other Audio Devices(Direct Encoding)	16
To listen to the recorded file	17

To listen to FM Radio & Record at the Real time

To preset frequency by Auto Scan	18
To save frequency by Manual	18
To record FM Radio	19
To set up FM Band	19

To set the MODE Function

Major MODE Setting Up	20
-----------------------	----

How to use the UTILITY program

Converting format from TVF to WAV	25
Font Download	27
Firmware Upgrade	30

Other and Trouble Diagnosis

Precautions	33
How to troubleshoot	33
To disconnect from PC(Windows 98SE / ME)	36
Low Format	36

Specifications of Product	37
----------------------------------	----

Feature & Others

Features



1. Playing MP3 & WMA music files

-It plays MP3 and WMA Music files.

2. Removable Disk Function

- Additional Hard Disk Drive is appeared on your PC.

- It consists of Directoy structure, and users can create the folders to save, copy, playback, and delete the desired music.

3. ENCODING Function

- Users can record not only voice but also FM Radio at the real time, and the desired MP3 files can be made to directly connect to other audio devices such as CD Player, Cassette Tape Recorder and so on.

4. FM Radio Function

- Users can listen to FM Radio to use preset frequency function by Auto Scan, and the preset frequencies are saved automatically.

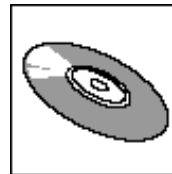
5. Folder Function

- Users can manage files very easily by creating and deleting free folders.

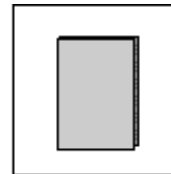
6. Firmware Upgrading

- The HAN-250X is easily upgraded by the firmware upgrading service through www.amac21.com. AMAC TEK CO., LTD. will give notice of the new functions and firmware for upgrading.

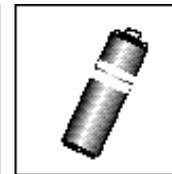
Enclosures



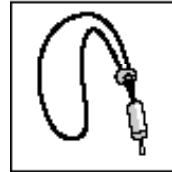
INSTALLATION CD



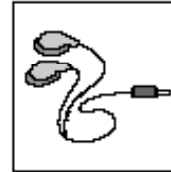
USER'S MANUAL



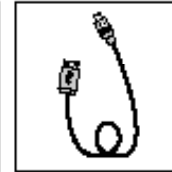
BATTERY



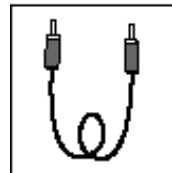
NECK STRAP



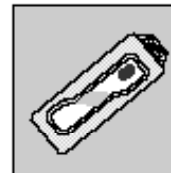
EARPHONE



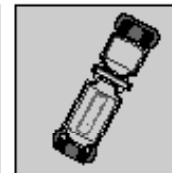
USB CABLE



AUDIO CABLE



CARRYING CASE
(Option)

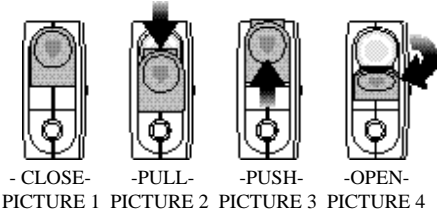


SPORT ARM BAND
(Option)



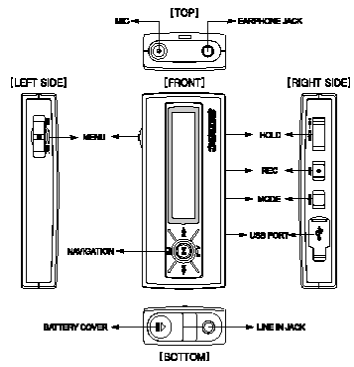
Way to change battery

The battery cover of MP3 Player is designed to P&P (Pull & Push) type for user convenience and product stability.

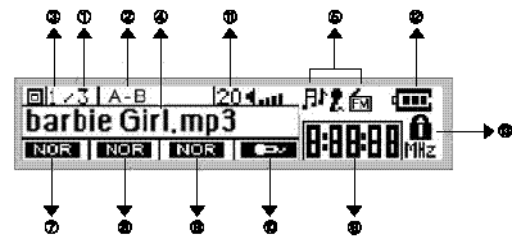


1. Closed status.
2. Please pull down the battery cover on the close condition, and battery will be coming out for buff effect.
3. Please push the battery cover completely as picture.
4. Please change the battery after opening the battery cover.

Player Overview



LCD Display



- 1. Indicates the total track number.
- 2. Indicates the Selected Area Repeat(A-B).
- 3. Indicates the present selected track number of file.
- 4. Indicates the title of the present played file.
- 5. Indicates the MODE(MP3, RECORDING, FM).
- 6. Indicates Playback Time.
- 7. Indicates EQ Mode.
(NOR CLA JAZZ ROCK M-B USER)
- 8. Indicates REPEAT Mode(NOR S1 ALL RAN).
- 9. Indicates Playback Speed(+ | 1, NOR, - | 1, - | 2, - | 3, - | 4).
- 10. Indicates the Record(VOICE/LINE).
- 11. Indicates the volume level(00 ~ 30).
- 12. Indicates the battery life.

Required Environment for users

PC System Requirements

- Windows 98SE / ME / 2000 / XP
- 20MB Hard Disk Space or higher
- CD-ROM Driver
- PC for USB Port supported

Required Software by OS(Operating System)

To install the program in Windows 98SE / ME

Windows 98SE / ME users should install the program in Installation CD.

If users don't install the program of Installation CD, computer doesn't recognize the player as a removable disk and it can't convert from TVF to WAV, download fonts, or upgrade firmware.

Users should surely install the program of Installation CD.

Player doesn't support Windows 98 Original version.

If PC doesn't recognize the removable disk normally even after installing the program, please refer to page #34, or FAQ in website www.amac21.com.

To install the program in Windows 2000 / XP

It is recommended that Windows 2000 / XP users install the program of Installation CD.

Even if users don't install the program of Installation CD in Windows 2000 / XP, computer can recognize the player as a removable disk automatically.

However, the installation is still required for converting from TVF to WAV, downloading fonts, and upgrading firmware.

If Windows 2000 users don't have Windows 2000 Service Pack 3 in the computer, users have to install Service Pack 3. (Please refer to FAQ in website www.amac21.com)

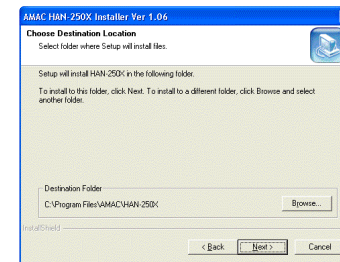
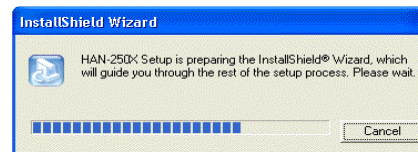
Windows 2000 / XP users should log in PC with the account by Administrator.

Software installation guide for additional functions

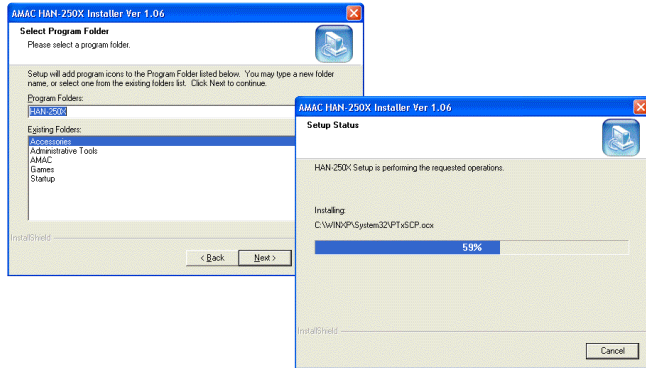
Please install an additional utility program which is used to convert from TVF file to WAV file, download the font and upgrade firmware.

How to install Software Program

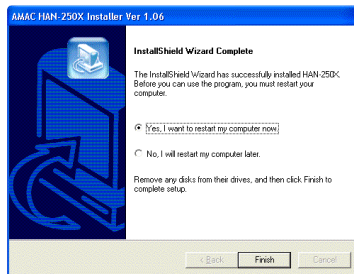
1. Insert the installation CD, and the following pictures are appeared. (If it is not run automatically, please click on 'HAN_250X_Installer.exe' file in the CD-ROM for the manual installation.)
2. Please follow the installation guide when it is run automatically. Select the folder to install. Then press [Next] Button in the order.



To Upload/Download



3. Please restart your computer to complete installation.



To connect to PC

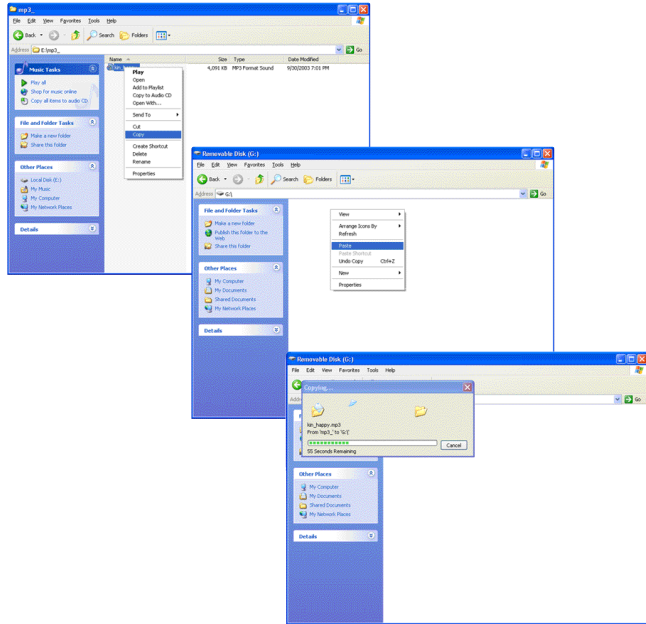
To download MP3 files from PC to HAN-250X, connect the provided USB cable between PC and MP3 Player. Then Windows explorer including ' config.sys ' file is appeared in the PC. If users remove this config.sys file from Player by using Windows explorer, all of basic setting values defined by AMAC will be changed because that ' config.sys ' file contains all of setting values defined by user.

To Upload/Download the files

Removable disk drive is appeared in [My Computer] when the player is connected to PC. And then [USB Connect] is displayed on the LCD of the player.

Users can copy the files saved in PC to the folder created in removable disk drive.

- Reference :
1. Users can create the desired folders for user convenience. For instance, Music, Voice, Pictures, Business, and so on.
 2. Users can see data files (.doc, .xls, .html, .pdf, etc.) through Manager program in the PC only while users can see music files in the player directly.



Uploading is on the contrary of downloading.
If the player malfunctioned because of improper disconnection,
please format the memory to return to normal condition.

To Format

Please format the memory after selecting the Removable Disk Drive and click on ' FORMAT ' in ' FILE ' Menu as below procedures.

Caution : If formatted, all data stored in the Memory will be deleted. Therefore please back-up all of data before the format.

It is strongly recommended to use [Format Memory] function of the player because users can save the waiting time(the booting time) when the player is turned on. If users format the player from PC, the booting time may last longer.

(Please refer to page #21 [Format Memory])

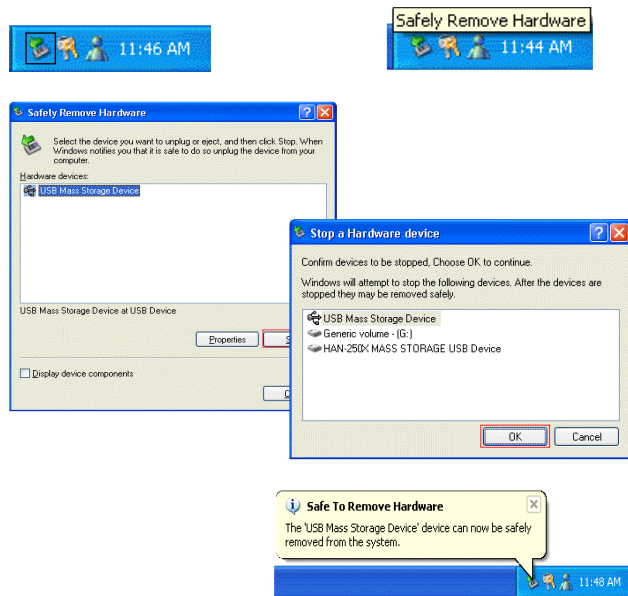
To disconnect from PC (Windows 98SE / ME)

(Please refer to Page #36)

To disconnect from PC (Windows 2000 / XP)

Disconnection from PC should be done as following procedures to prevent from file damage.

Please double click the green arrow icon at the bottom of right side as below pictures.



Please select USB device and click on [STOP] Button.
Please disconnect the player after click on [OK] Button.

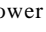
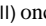
(Notice : The files which are saved in the Memory may be damaged in case of unsafe disconnection.)


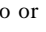
To listen to MP3/WMA Music Files

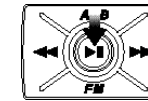


To listen to music

To turn the POWER ON/OFF, PLAY/STOP

The power will be turned on when NAVIGATION Key() is pressed over two or more seconds and then press NAVIGATION Key() once again to play the music.

Press NAVIGATION Key() and player stops playing. Press NAVIGATION Key() for two or more seconds while the player does not play. Then, the power is switched off.



(Notice : The booting time may be different according to the number of the folders and files saved in the player.)

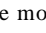

To control Volume

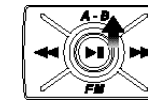
Please move M(MENU) Key to 'VOL+'(to LEFT SIDE) for volume up. And move M(MENU) Key to 'VOL-'(to RIGHT SIDE) for volume down. The Volume can be controlled in the range of 00~30.



Repeat function for the selected Area (A-B)

The desired area can be played repeatedly in the playback file.

Please move NAVIGATION Key() to 'A-B' at the point of the start(A) and move NAVIGATION Key() to 'A-B' at the point of the end(B).

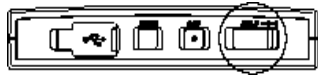




Then, the selected section is repeated. To release the selected section, move NAVIGATION Key() to 'A-B' again.

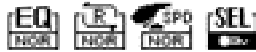
- Notice : 1. Repeat function can be applied for not only a file but also several files, too.
2. Repeat function is not available in case REPEAT MODE is set up as a 'RAN'(Random).

HOLD



With this function, you can prevent HAN-250X from malfunction occurred in the disordered place. When HOLD button is placed in the ON Position (HOLD), all buttons on the player are not working. However, POWER ON is available on the present status of POWER OFF.

MENU Function



HAN-250X has a function of M(MENU) Key for user convenience. Press M(MENU) Key, and icons for setting up functions will be displayed on LCD screen (EQ REPEAT PLAYBACK SPEED CONTROL RECORD SELECTION(Voice/Line)). Each time users press MENU Key, it moves EQ REPEAT PLAYBACK SPEED CONTROL RECORD SELECTION in regular sequence. If no movement occurs more than 5 seconds, it automatically returns to the previous status. To set the each function, move M(MENU) Key to right or left.

Equalizer (EQ) Setting Up

Select ()Icon and move M(MENU) Key to right or left. Then the 5 EQ modes will be shown as below.

Normal Classic Jazz Rock M-Bass USER

Please refer to page #24[USER EQ].

Repeat Setting Up

Select ()Icon and move M(MENU) Key to right or left. Then the Repeat Setting up will be shown as below.

NOR(Normal) S1(Select One) All(ALL) RAN(Random)

Reference: In case of selecting 'ALL' and 'RAN' in the folder, only files within that folder are played.

Playback Speed Control

Select ()Icon and move M(MENU) Key to right or left. Then the Playback Speed Control Setting up will be controlled up to 6 steps.

(Normal[Nor], Fast[+I1], Slow4[-I4], Slow3[-I3], Slow2[-I2], Slow1[-I1])

Record / Encode Setting Up

Please set up MIC() and LINE() input as users convenience using the function of MENU when encoding. Please press M(MENU) Key and then select () Icon. When the voice recording is desired, please move M(MENU) Key to right and left and select MIC() Icon when the direct encoding is desired, please select LINE() Icon.

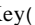



Power Saving Function

The power will be turned off automatically if no movement occurs for 3 minutes.

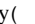
To search Directory

Folders consist of each basic folder, and MP3 files are saved in each folder. If the desired file that users want to listen to is in the other folder, users have to move to that pertinent directory.

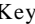

To move from file to file

Move NAVIGATION Key() to left() or right() for the next or previous file. If the current status is root folder, subfolder will be shown with files of the root folder. If the current status is subfolder, root folder will be shown  \Up_Folder with files of the subfolder.

To move to the Subfolder

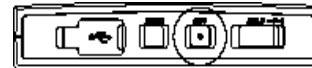
Press NAVIGATION Key() to move the desired folder at the status of the upfolder.



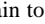

To move to the Upfolder

Press NAVIGATION Key() at the status of  \Up_Folder , which is shown after the last file.


To record/encode

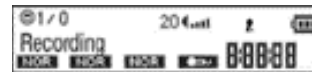
How to record



After setting up MIC() Icon, press REC() Button to start the recording and press REC() Button again to stop the recording. The recorded voice will be saved in ENCODING folder() automatically.


To record with MIC

Please press M(MENU) Key and then select MIC() Icon to record. The recorded files will be saved from VOICE001 in the ENCODING folder in sequence.

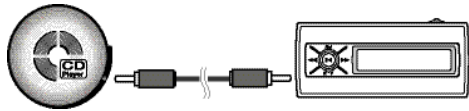


To encode from other Audio Devices(Direct Encoding)

It is the function to record directly from other audio devices such as CD Players or Cassette Players.

- Connect Line-In terminal of the player to Line-Out terminal of audio devices with an audio cable provided after setting up LINE() Icon at MENU Function.

- Play the CD Player or Cassette Player and press REC() Button on the player to start the recording.
- Press REC() Button again to stop the recording.



The recorded files will be saved from LINE-001 in the ENCODING folder in sequence.

(Reference : Users need to set up the best tone quality of the other audio devices because tone quality of the recorded file depends on tone quality of the other audio devices actually.)

To listen to the recorded file

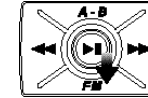
The playback of the all recordings is the same as listening to the music.

Reference

1. VOICE Recording File displaying on LCD: VOICExxx
2. Direct Encoding File displaying on LCD: LINE-xxx
3. FM Recording File displaying on LCD: RADIOxxx

To listen to FM Radio & record at the real time

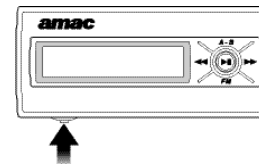
Please move NAVIGATION Key() to 'FM' shortly to move to FM Mode.



(Notice : Earphone provided should be inserted into the player to receive FM frequency because the earphone works as an antenna.)

To preset frequency by Auto Scan

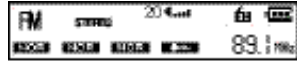
Move NAVIGATION Key() to 'FM' to enter FM Radio. Then, press M(MENU) Key two or more seconds to search and save up to 15 channels automatically(PRESET01~PRESET15).



To save frequency by Manual

In case it may happen that the saved frequencies are not very well set, the desired frequencies can be found and saved by manual as follows:

- Press M(MENU) Key once, and the saved frequencies are released. Move NAVIGATION Key() to left() or right() to move the desired frequency.
- Press NAVIGATION Key(), and [PRESET SAVED] is displayed on LCD which means the desired frequency is saved.



[To Release Preset]



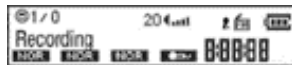
[To Save By Manual]

To record FM Radio

Users can record the desired FM Radio while listening as follows:

- Press REC() Button while listening to start the recording and then
- Press REC() Button again to stop the recording.

- (Reference : 1. FM Radio recording files are saved from RADIO001 in the ENCODING folder in sequence.
 2. Under FM Radio recording, files are recorded on the basis of 96Kbps / MPEG2 Layer 3 regardless of user's setting mode.



[To Start Recording]

To set up FM Band

It is function of worldwide FM frequency setting up. Please refer to page #23 [FM Band Select].

- (Reference : US Band is default mode at first)

Setting up Band

US Band : USA, KOREA, CHINA and the other areas
 (87.5 ~ 108 MHz)
 JAPAN Band : JAPAN (76 ~ 90 MHz)
 EU Band : EUROPE

To set the MODE Function

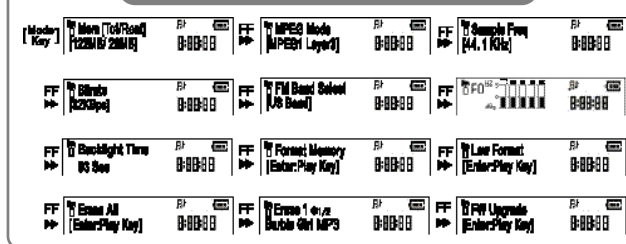
The player is made for users to set up the basic mode as user convenience. Turn on the power and press MODE Button shortly to enter MODE function Setting Up. To return, press MODE Button again.

- (Reference : Entering MODE function is not available at the status of FM RADIO. Please get out of FM RADIO Mode once and then enter into MODE function.)

Major MODE function Setting Up

- Mode related to Memory Setting Up
- Memory Information : Memory use status
- Mode related to Memory Management Setting Up
 Format Memory, Low Format, Erase All, Erase 1
- Mode related to Recording Setting Up
- MPEG Setting Up, Sample Frequency Setting Up, Bitrate Setting Up,
- Mode related to User Definition
- FM Band Select
- USER EQ
- Backlight Time
- Firmware Upgrading Mode Setting Up

Pictures for All MODE Functions

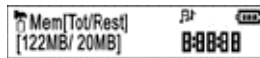




Memory Information

Memory use status

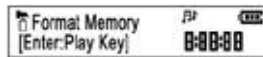
- Total Flash Memory Capacity / Free space



- (Reference : An actual usable memory in the player is smaller than an original memory because memory is used by the system of the player.)

Mode related to Memory Management Setting Up

Format Memory



It is function of initializing the memory.

- Press MODE Button shortly to enter MODE Setting Up first.
- Then press NAVIGATION Key() in the player, and 'YES or NO?' is appeared on the LCD.
- Press NAVIGATION Key() again to format, and "Formatting!!" is appeared.

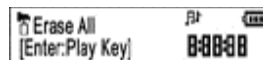
Low Format



It is function of checking Bad Block in detail. The process is the same as the above [Format Memory].

- (Reference : Please refer to page #36, #37 [Low Format].)

Erase All



It is the function to erase all files.

- Press MODE Button shortly to enter MODE Setting Up first.
- Then, move NAVIGATION Key() to left() or right() to move to Erase All.
- Press NAVIGATION Key(), and all saved files are deleted while 'All Erasing!!' is appeared on LCD display.

Erase 1

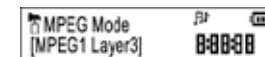


It is the function to erase one file.

- Press MODE Button shortly to enter MODE Setting Up.
- Then, move NAVIGATION Key() to left() or right() to move to Erase 1.
- Move M(MENU) Key to 'VOL+'(to LEFT SIDE) / 'VOL-'(RIGHT SIDE) to select the file to delete file in the player.
- Then press NAVIGATION Key() to delete the desired file while 'Erasing!!' is appeared on LCD display.

Mode related to Recording Setting Up

MPEG Mode



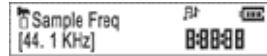
The MPEG Mode setting up consists of 3 types as follows:

MPEG1 layer3 MPEG2 layer3 TVF

Move M(MENU) Key to 'VOL+'(to LEFT SIDE) / 'VOL-'(to RIGHT SIDE) to look for MPEG Mode and then press NAVIGATION Key() to select desired one among 3 types of MPEG Modes.



Sample Freq Setting Up



Move M(MENU) Key to 'VOL+'(to LEFT SIDE) / 'VOL-'(to RIGHT SIDE) to look for desired SAMPLE FREQUENCY and then press NAVIGATION Key() to select desired one among Sample Frequencies. The Sample Frequency depends on the MPEG Mode as TABLE [1]:

Bitrate Setting



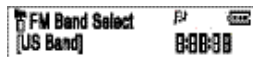
Move M(MENU) Key to 'VOL+'(to LEFT SIDE) / 'VOL-'(to RIGHT SIDE) for looking for desired Bitrate and then press NAVIGATION Key() to select desired one among Bitrate. The Bitrate depends on the MPEG Mode as below.

TABLE [1]

MPEG MODE	Sample Freq(KHz)	Bitrate(Kbps)
MPEG1 layer3	32	10 Steps in range of 32 ~ 224
	44.1	5 Steps in range of 96 ~ 192
	48	4 Steps in range of 112 ~ 256
MPEG2 layer3	16	5 Steps in range of 96 ~ 160
	22.05	7 Steps in range of 64 ~ 160
	24	8 Steps in range of 56 ~ 160
TVF	8	2 Steps in range of 4.7 ~ 5.9

Mode related to User Definition

FM Band Select



It is function of worldwide FM frequency setting up.

Move M(MENU) Key to 'VOL+'(LEFT SIDE) / 'VOL-'(RIGHT SIDE) to look for desired FM Band and then press NAVIGATION Key() to select desired one of among US Band JAPAN Band EUROPE Band.

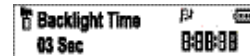
USER EQ



Each song can be set through the USER EQ function which has 5 channels in the ranges of 20Hz ~ 20KHz. It can be adjustable in the ranges of -5dB ~ +5dB by user.

Please press M(MENU) Key to move to each of blocks. And move M(MENU) Key to 'VOL+'(LEFT SIDE) and 'VOL-'(RIGHT SIDE) to set the desired 'dB' within the block.

Backlight Time



Users can set up desired Backlight time and turn off Backlight.

Mode related to Firmware Upgrade



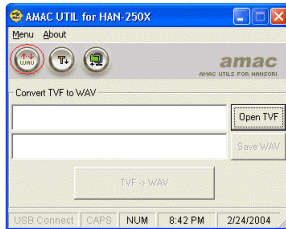
It is the function to upgrade the firmware. Please refer to page #30 [Firmware Upgrading].

How to use the UTILITY program

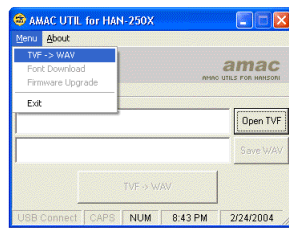
Converting format from TVF to WAV

1. Converting format from TVF to WAV

- Click on the Icon (↑↓) as below [Picture 1-1] or select [TVF WAV] in the [Menu] as below [Picture 1-2]. Users can choose either way.



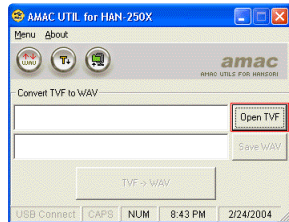
Picture [1-1] To select by Button



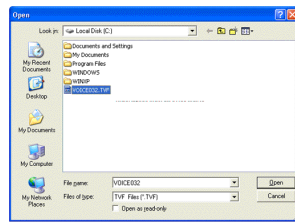
Picture[1-2] To select by [Menu]

2. How to convert from TVF File to WAV file

- Picture [1-4] is appeared when clicked on [Open TVF] Button as picture [1-3]. Select TVF file in the PC which was previous downloaded from MP3 Player(HAN-250X). And then, please click on [Open] Button.



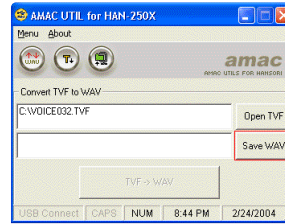
Picture [1-3]



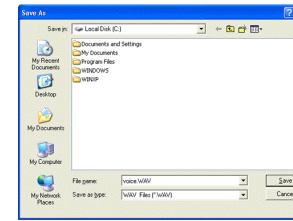
Picture[1-4]

3. Selecting WAV file name to save

- Picture [1-6] is appeared when clicked on [Save WAV] Button to appoint the place for saving as Picture [1-5]. Select file name and the place to save and then click on [SAVE] Button.



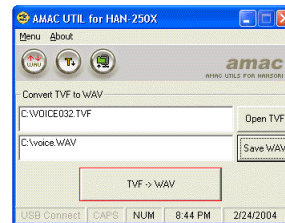
Picture [1-5]



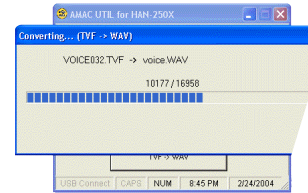
Picture[1-6]

4. Conversion

- Press the [TVF WAV] Button to convert as below Picture [1-7]. Then, Picture [1-8] is appeared and disappeared when it is done.



Picture [1-7]





Picture[1-8]

Font Download

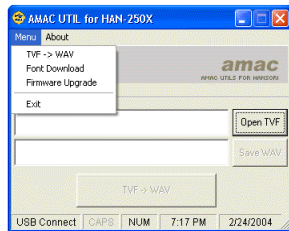
When do users download fonts?

The music title is displayed on LCD using the external font provided by the player. When the music title is not properly displayed or the font is obsolete, users can download the fonts from the website www.amac21.com.

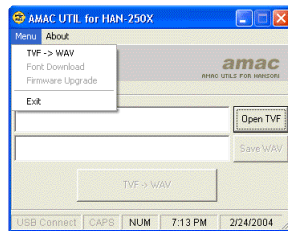
How to Download the Fonts

1. To download, press MODE Button shortly in the player.
2. Move NAVIGATION Key() to find [FW Upgrade]. Then press NAVIGATION Key(), and [Not Connect] is appeared on LCD.
3. After that, connect the player to PC, and [FW Upgrade Connected] is appeared on LCD. Refer to the followings:

Pictures when the player is connected to PC




Picture [2-1]
Connected Properly picture

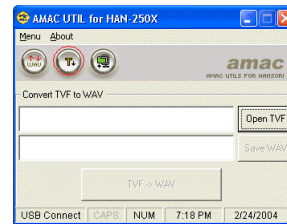


Picture [2-2]
Connected Improperly picture

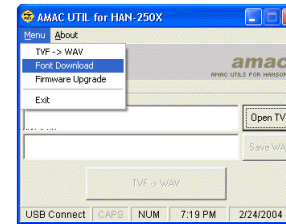
4. [USB Connect] is activated shown on the Bottom left corner as above Picture [2-1] and not activated on the Bottom left corner as above Picture [2-2].
5. And, [Menu] on the MENU BAR related to USB Connection is not activated when the player is not connected to PC properly.

How to select the fonts downloading

6. Click on the Icon () to download fonts as shown on Picture [2-3] or, click on [Font Download] Button the MENU BAR to download fonts as shown on Picture [2-4]. Users can choose either way.



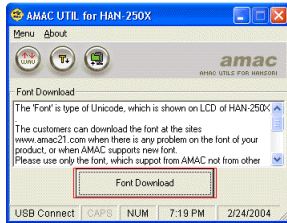
Picture [2-3] To select by Icon



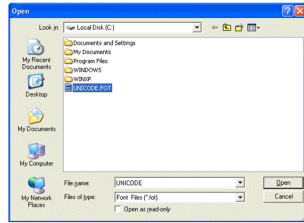
Picture [2-4] To select by [Menu]

7. Click on [Font Download] Button to start the downloading as shown on Picture [2-5].

Please select Font file in the PC which was previous downloaded from AMAC website www.amac21.com. And then, click on [Open] Button.



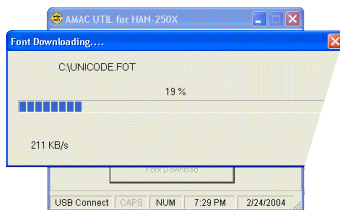
Picture [2-5]



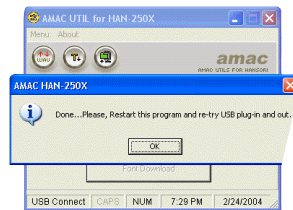
Picture [2-6]

8. Picture [2-7] shows that the downloading is progressing.

9. Press [OK] Button as picture [2-8] after finishing Font Downloading.



Picture [2-7]



Picture [2-8]

10. Turn the player power off and turn it on again. The program has to be restarted after the Font Downloading, and retry the play Plug-In and Out.

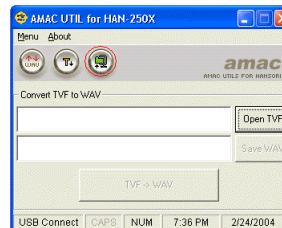
(Caution : Please do not plug-out the player during Font Downloading. It will cause the serious problem.)

Firmware Upgrading

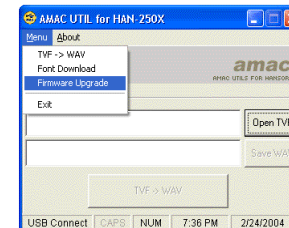
1. The newest firmware is uploaded on the website www.amac21.com.
2. Users can see present firmware version by checking initial screen of LCD when pushing MODE Button shortly.
3. Power the player on and then press MODE Button to enter [FW UPGRADE].
4. Move NAVIGATION Key() to find "FW Upgrade". Then press NAVIGATION Key(), and "Not Connect" is appeared on LCD.
5. Click on the program related to the newest firmware on your PC screen.
6. Disconnect USB cable from player when finishing firmware upgrading.

To upgrade firmware

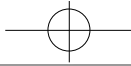
1. Click on the Icon () to upgrade firmware as shown on Picture 3-1 or, click on the [Menu] on the MENU BAR to upgrade firmware as shown on Picture [3-2]. Users can choose either way.



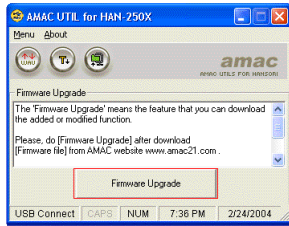
Picture [3-1] To select by Icon



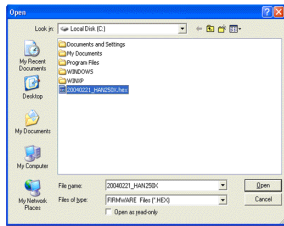
Picture [3-2] To select by [Menu]



2. Click on [Firmware Upgrade] Button as shown on Picture [3-3] and select firmware file which was downloaded from AMAC website www.amac21.com as shown on Picture [3-4].

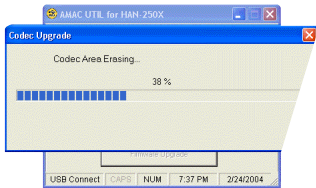


Picture [3-3]

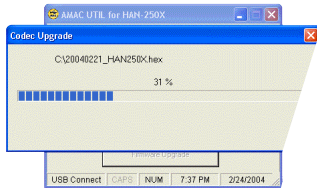


Picture [3-4]

3. The old firmware is being removed as shown on Picture [3-5]. The new firmware is being downloaded as shown on Picture [3-6].

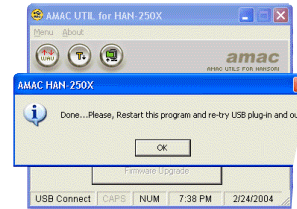


Picture [3-5]
Removing Old Firmware



Picture [3-6]
Downloading New Firmware

4. Please click on [OK] Button to complete.

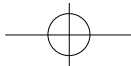


Picture [3-7]

5. Turn the player power off and turn it on again.

Reference :If you plug-out the player during Font Downloading and Firmware Upgrading, please try to do following procedures.

1. Move HOLD Key to 'HOLD ON' on the status of 'POWER OFF'.
2. Connect USB cable with player pushing MODE Button tightly.
3. After that, double click the Utility Program("HAN-250X UTIL") and upgrade the firmware again.



Others and Trouble Diagnosis

1. Precautions

The followings are precautions that you should keep in mind. Any violation of the following precautions may cause damage of product.

If the player will not be operated for a prolonged period, remove the battery to avoid possible damage caused by electrical leakage.

To avoid static electricity, if possible, please, avoid operating the player in extremely dry environment.

Do not drop the player, which probably cause battery fall off or damage its surface.

The player should be kept in areas free from extreme temperature changes, moisture and dust.

(Do not leave the player over 70 °C and below 5 °C)

Do not polish with a chemical material (Benzene, Thinner, Organic solvent).

Do not expose in many hours on a direct ray of light or closed place from heat appliance.

If the player stops running under proper operation, please reset it by taking out battery.

Do not disassemble a product unnecessarily except for the AMAC maintenance man.

2. How to troubleshoot

When USB driver is not properly installed after the player is connected to PC, please follow as below.

Information related to USB Driver installation (For only Window 98SE/ME users)

When the message on PC shows that the driver can not be opened after the player is connected to PC.

If the player is properly connected to PC, click on [START] button of Windows and select [CONTROL PANEL] → [SYSTEM] → [DEVICE MANAGEMENT] in sequence.

Double click on [Universal USB Controller] and check whether or not the AMAC USB Driver exists.

Select and delete AMAC USB Driver or the USB Driver of other devices if they are marked with a question mark (?), an exclamation mark (!) or [Unknown Device].

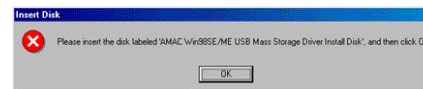
Pull out only the USB cable from the player, but leave alone the USB cable connected to the USB port on PC. Then, please reboot the PC.

Connect the USB cable to the player after rebooting, and the USB driver is automatically detected.

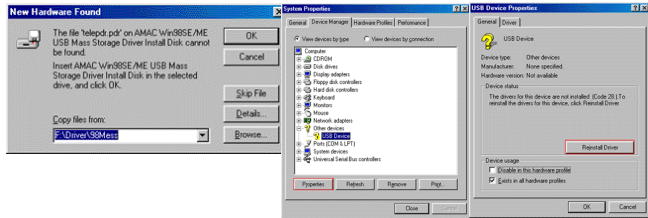
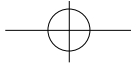
Reference

When same problem happens, please install CD to set up USB Driver manually as follows:

1. Warning message is appeared as Picture [4-1] when USB Driver doesn't set up in Windows 98SE / ME.



Picture [4-1]
An Error in recognizing USB Driver

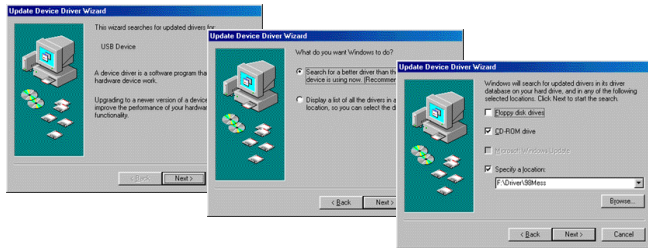


Picture [4-2] Installing USB Driver by manual

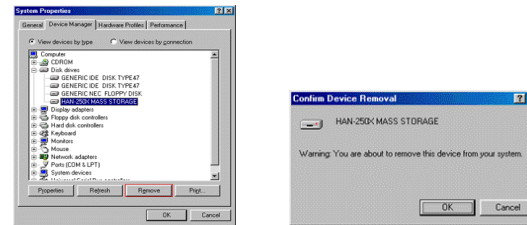
To disconnect from PC(Windows 98SE / ME)

Disconnection from PC should be done as following procedures to prevent from file damage.

- Click on [START] Button of Windows and select [CONTROL PANEL] [SYSTEM] [DEVICE MANAGEMENT]. And then, disconnect USB Cable from PC after removing 'HAN-250X Win98SE/ME USB MASS Storage Driver'.



Picture [4-3] Setting up place to install USB Driver



Picture [5]

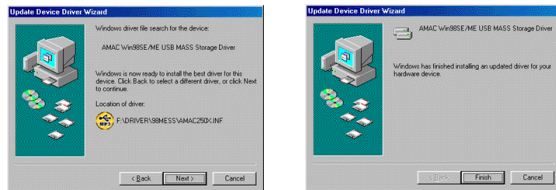
Low Format

What is Low Format?

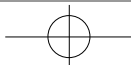
It is function of initializing the memory by deleting all data completely and constituting the track and sector. Thus, Low Format is substantial initializing Flash Memory in the player.

When 'Low Format' is needed :

1. In case download speed is getting slow than before.
- Please arrange available 'Memory Block' in order.
2. In case file & folder and sound is broken during playback.
- It occurs when users use unusable BAD Block by (normal) format.



Picture [4-4] Completing to install USB Driver by manual





3. In case Format is failed even though users tried to format the Memory

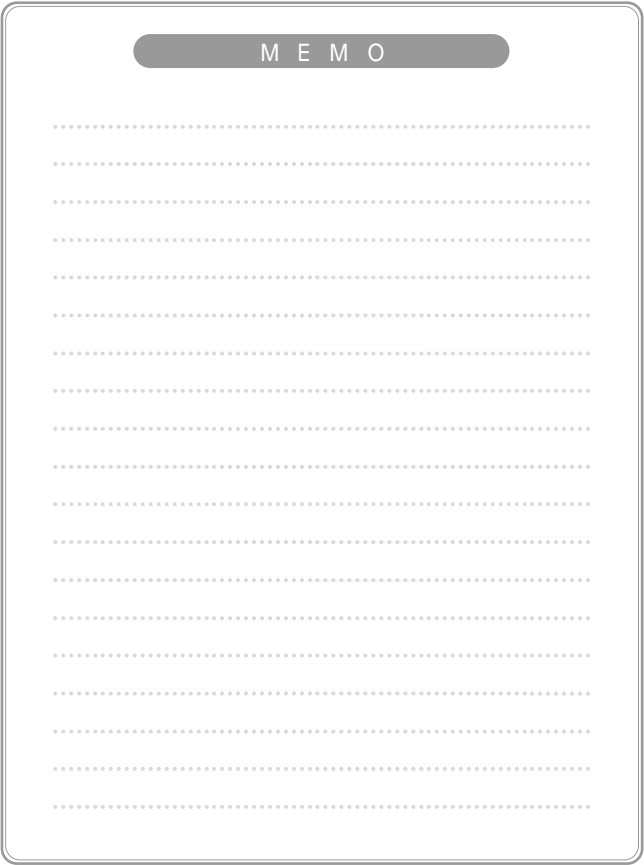
- Deleted information is showed in the Window.

The way to format the Memory by 'Low Format'

- Please move to 'Low Format' by using NAVIGATION Key() to left() or right() after pressing NAVIGATION Key shortly to enter MODE Setting Up first.

- Then, press NAVIGATION Key() in the player, and 'YES or NO?' is appeared on the LCD. And then press NAVIGATION Key() again to format the Memory, and 'Formatting!!' is appeared and processed.

(Notice : It takes 5 to 10 minutes for Low Format in case of 128MB. All of data will be deleted when users make player power off in the process of Low Format. In this case, users have to process Low Format again.)



[Specifications of Product]

Model No.	HAN-250X
Memory	128 / 256 / 512MB
Battery	1.5V X 1EA(AAA type)
Playing Time	10 Hours
Size / Weight	35X80X15mm / 43g (Battery excluded)
Interface Port	USB 1.1
Download Speed	8 Mbps
Voice Recording Time	Max. 8 Hours(128MB, 32Kbps)
Direct Encoding Time	Max. 8 Hours(128MB, 32Kbps)
FM Encoding Time	Max. 3 Hours(128MB, 96Kbps)