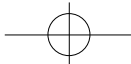


Copyright Notices

Information in this document is subject to change without notice and represent a commitment on the part of AMAC CO., LTD. No part of this manual may be reproduced or transmitted in any form or by any means, electronic or mechanical, including photocopying and recording, for any purpose without the written permission of AMAC CO., LTD. The software described in this document is furnished under a license agreement and may be used or copied only in accordance with the terms of the license agreement. It is agreement the law to copy the software on any other medium except as specifically allowed in the license agreement. The licensee may make one copy of the software for backup purpose.

Copyright 2004 by AMAC CO., LTD
All rights reserved.



FCC Information

This equipment has been tested and found to comply with limits for a class B digital device, pursuant to Part 15 of the FCC Rules. These limits are designed to provide reasonable protection against harmful interference in a residential installation. This equipment generates, uses and can radiates radio frequency energy and, if not installed and used in accordance with the instructions, may cause harmful interference to radio Communications, However, there is no guarantee that interference will not occur in a particular installation. If this equipment does cause unacceptable interference to radio or television reception, which can be determined by turning the equipment off and on, the user is encouraged to try to correct the interference by one or more of the following measures.

1. Reorient or relocate the receiving antenna.
2. Increase the separation between the equipment and receiver.
3. Connect the equipment into an outlet on a circuit different from that to which the receiver is connected.
4. Consult the dealer or an experienced Radio / TV technician for help

CAUTION

Changes or modifications not expressly approved by the manufacturer responsible for compliance could void the user's authority to operate the equipment.

Certificated Of Conformity

1. Company : **AMAC TEK CO., LTD**
3rd Floor, Seyo Bldg, 161-8, Samsung-Dong,
Kangnam-Gu, Seoul Korea 135-881
2. Model Name : HAN-500
3. FCC Compliance Statement:
This device complies with part 15 of FCC Rules.
Operation is subject to the following two conditions:
(1) This device may not cause harmful interference, and
(2) This device must accept any interference received, including interference that may cause undesired operation.
4. CE Rules : Product with the CE Marking comply with both the EMC Directive (89/336/EEC) and the amendments (91/263/EEC) issued by the Commission of the European community. Compliance with these directives implies conformity to the following European Norms:
 - EN55022:1998+A1:2000+A2:2003 --- Information Technology Equipment - Radio disturbance
 - EN55024:1998+A1:2001+A2:2003 --- Information Technology Equipment - Immunity
 - EN55013:2001 --- Sound and television broadcast receivers and equipment - Radio disturbance



Content

Content

Precaution & Overview

- Caution.....01
- Required System Specification.....02
- Features.....02
- Enclosures.....04
- Play Overview.....05
- LCD Display.....06

Basic Information

- To setup Program.....07
- To connect to PC.....07
- To disconnect from PC.....09
- To File Download/Upload.....11
- To change to MODE.....11
- To Play Music files (MP3 & WMA).....12
- How to use SD Card.....15
- EQ/REPEAT/SPEED Setting.....17
- How to use Browser.....18
- To listen to FM Radio.....21
- FM Recording.....24
- Voice Recording.....25
- Line-In Recording.....27

[Config Mode] Setting

- [RECORD] Setting.....30
- [FORMAT] Setting.....31

- [CONTROL] Setting.....33
- [EXIT] from [Config Mode].....36

How to use mediaSync Program

- Firmware Upgrade.....37

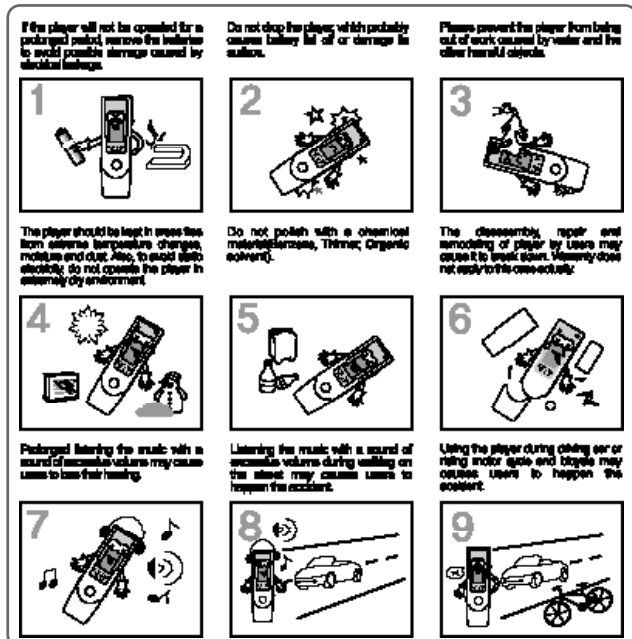
Other and Trouble Diagnosis

- Driver Reinstallation.....40
- Check List in Case of Trouble.....42
- Font Download.....45
- Specification.....45

. Precaution & Overview

Caution

Please be sure to read the following a because these may be the cause of trouble.



The contents in this manual may change without any notice in advance due to functional improvement of the product or change of specification.

. Precaution & Overview

Required System Specification

- PC Hardware
- 20MB Hard Disk Space or higher
 - CD-ROM Driver
 - PC for USB Port supported
- PC Software
- Windows98SE/ME/2000/XP
 - CD-ROM Driver
 - PC for USB Port supported

Features

1. Portable Disk Function with P&P(Plug and Play) type
 - Additional Hard Disk Drive is appeared on your PC.
 - It consists of directory structure and users can create the folder to save, copy, playback, and delete the desired music.

2. SD/MMC Card Support
 - The player supports SD/MMC Card slot so that it can be used for music file as a store.

3. Encoding Function

- Users can record not only voice but FM Radio at the real time and the desired MP3 files can be made to directly connect to other audio devices such as CD Player, Cassette Tape Recorder and so on.

4. FM Radio Function

Users can listen to FM Radio to use preset frequency function by Auto Scan and the preset frequencies are saved automatically.

5. Strong Browser

You may browse desired information more easily by using the Navigation Key in the front.

This player also supports file management function including deleting files and folders. In this manner, convenience is provided to users.

6. Firmware Upgrade

Convenient firmware upgrading environment is provided to customers for constant improvement of the product function. refer to AMAC website "www.amac.com" please.

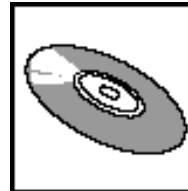
7. Support of the Words of Songs

Through a "mediaSyns Player" program and a "mediaSync Editor" program, which are supported in this player, you may search and download words of songs by connecting to the Words of Songs File Server. Also, you may synchronize the words of songs and text data with the MP3 files such as music or language learning. Edit function to correct, delete and save files is also available.

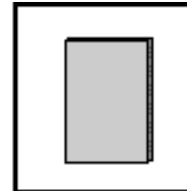
8. High Quality Sound Effect (SRS)

This is to enhance original sound quality to magnificent high quality sound.

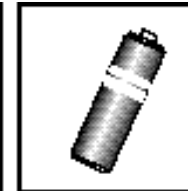
Enclosures



INSTALLATION CD



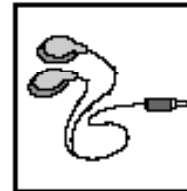
USER'S MANUAL



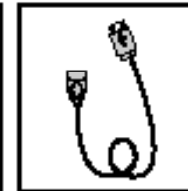
BATTERY



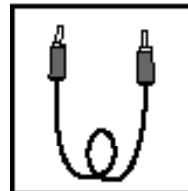
NECK STRAP



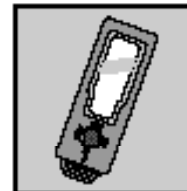
EARPHONE



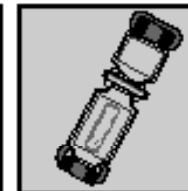
USB CABLE



AUDIO CABLE



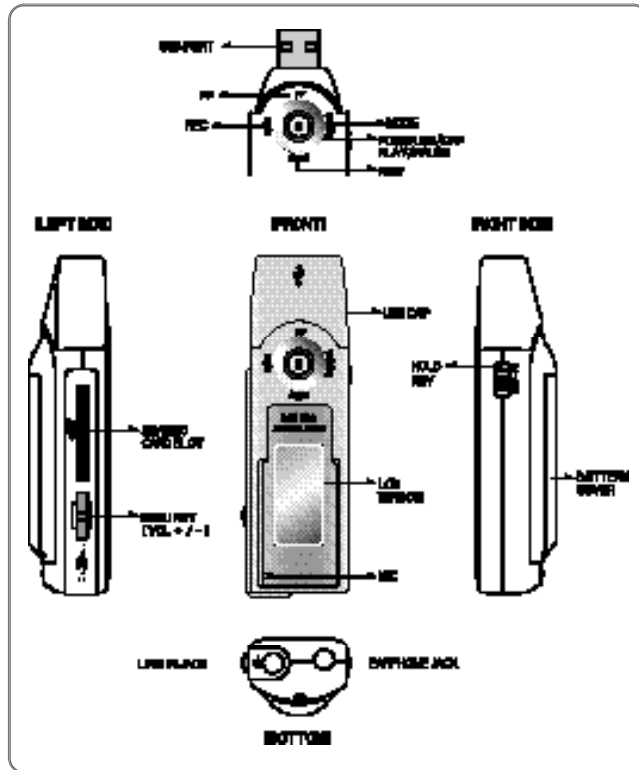
CARRYING CASE(Optional)



SPORT ARM BAND(Optional)

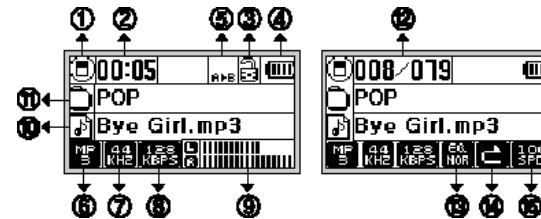


Play Overview



5

LCD Display



Current file's location information
 Playback time of the current track
 HOLD ON/OFF setting
 Remaining battery capacity
 Range repeat
 Compression file format of the current track(MP2/MP3/WMA)
 Sampling Frequency of the current track
 Bitrate of the current track
 Level spectrum of played back sound
 File name of the current track
 Folder name of the current track
 Current file's track number (8th track song/music of a total of 79 files)
 EQ (Equalizer) setting (Normal, Rock, Jazz, Classic, Pop, User EQ, SRS ON)
 REPEAT (Repeat mode) setting (A playback, a repeated playback, playback within directory, repeated playback within directory, all songs playback, repeated playback of the all songs)
 SPEED (Playback speed) setting (50~200%)

6

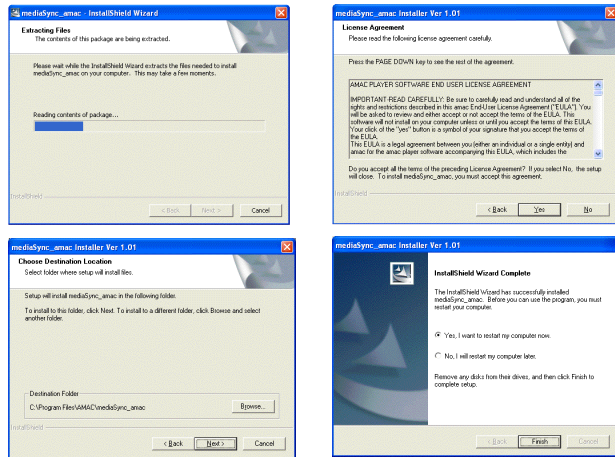
. Basic Information

. Basic Information

To setup Program

Insert the installation CD, and the following pictures are appeared. (If it is not run automatically, please click on "mediaSync_amac.exe" file in CD-ROM for the manual installation.)

You need to reboot your PC after installation.



When the installation is completed, the "mediaSync Player" icon and the "mediaSync Editor" icon are created on the screen of your PC.

To connect to PC

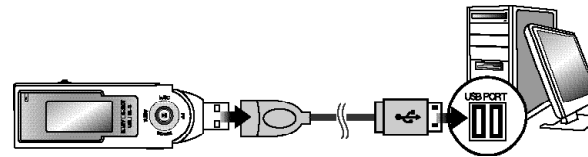
There are two methods to connect with PC as follows:

1. Direct Connection

Open the cap of the player and connect USB port to your PC.

2. Connection through the USB Cable

Use the USB cable provided if the USB port is positioned at the uncomfortable place.



When the player is connected to PC, two removable disk drives are appeared in [My Computer].

The first removable disk drive is for the internal Flash Memory in the player, and the second one is for SD Card. This can be used only when SD Card is inserted. If the player is connected to PC, [USB Connect] is displayed on the LCD.



<Notice>

To open the USB Cap, lean it downward direction and pull it as below pictures.

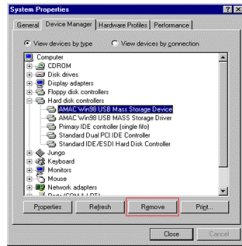


To disconnect from PC

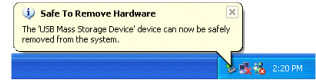
To disconnect player from PC, the following should be carried out depending on the Windows Operating System (OS).

To disconnect from Windows 98SE / ME

Please click on [START] Button of Windows and select [CONTROL PANEL] [SYSTEM] [DEVICE MANAGEMENT] Disconnect USB Cable from PC after removing [AMAC Win98SE/ME USB Mass Storage Driver]. Then, remove the player from PC after click [OK] Button.



Select USB Device and push on [STOP] Button. Disconnect the player after click on [OK] Button.



To disconnect from Windows 2000/XP

Please double click the icon "Safely Remove Hardware" at the bottom of right side as bellow.



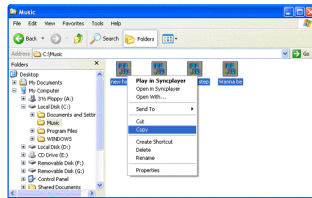
<Caution>

1. If you remove player from your PC without executing "Safe Hardware Removing," it may cause the player to be out of order.
2. When you remove player from your PC while moving data, the data in the player will be damaged.
If the player is malfunctioned due to improper disconnection, please format the memory to return to normal condition. (Please refer to page 31 [FORMAT] Setting.)

To File Download/Upload

With regard to File Download, when you executed the Windows Explorer, after connecting this product with your PC,

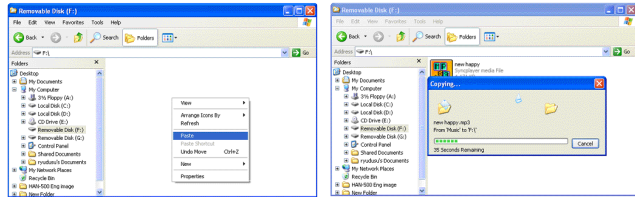
Select a file saved on the hard disk of your PC and choose "Copy" by pressing the right button on your mouse.



After moving to the desired location within the mobile disk, select "Paste" by pressing the right button on the mouse.

Users can create the desired folders for user's convenience. (i.e : Music, Pictures, Business, and so on)

Uploading is on the contrary of downloading.

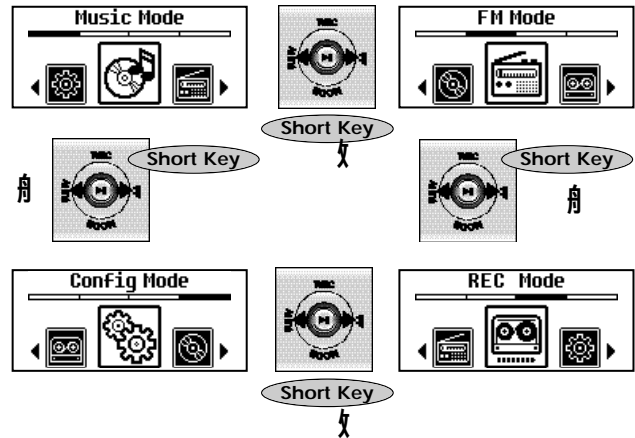


To change to MODE

To change to MODE

When you push the Navigation Key() to the "MODE" direction long, you may select by pressing in the direction of "FF" or "REW"

after entering into the MODE Conversion as in the following figure. After selecting MODE, if you push the Navigation Key(), it will be converted to the concerned MODE.

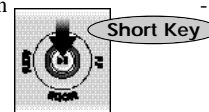


- Music Mode : To play MP3 and WMA files
- FM Mode : To FM Radio and Recording Mode
- REC Mode : To Line-in Recoding and Voice Recording Mode
- Config Mode : To set various things and manage files for user's convenience

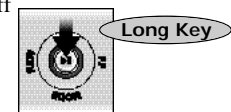
To Play Music files (MP3 & WMA)

Power On/Off

- Power On



- Power Off



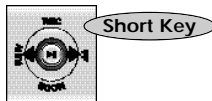
- Auto Power Off : If stop state is maintained for the time set in the [POWER OFF TIME] in the [Config Mode], power is off automatically. The factory set is for 2 minutes. (See page 34 [POWER OFF TIME].)

To Play / Pause

- Play / Pause 

Song/Music Selection and Search

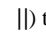
- Song/Music selection and finding while stopped and played back.

 Short Key

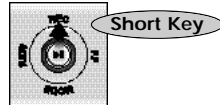
- Fast search within the Song/Music while played back.

 Long Key

Range Repeat Setting/Release

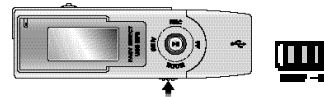
Repeat below action push the Navigation Key () to "REC" direction.

- Starting Point Setting of the Range Repeat End Point Setting of the Range Repeat Release to Range

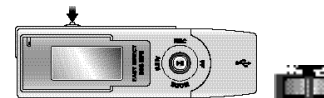
 Short Key

Key Lock / Release

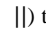
- This is to prevent the player from the malfunction of buttons in the complicated place.



Sound Volume Controlling (Volume Level : 0~40)



User EQ Setting


Push the Navigation Key () to the direction of "REC" long while a song/music is played back.

00:05

POP

Bye Girl.mp3

MP 44 128 9



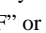
+12dB

0dB

-12dB

50 200 1K 3K 14K

Long Key

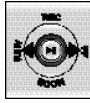
Movement between frequency bands: Push the Navigation Key () to the direction of "FF" or "REW".

+12dB

0dB

-12dB

50 200 1K 3K 14K




+12dB

0dB

-12dB

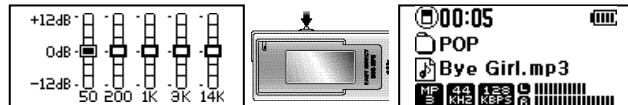
50 200 1K 3K 14K

Short Key

dB Value setting : Push the Navigation Key() to the direction of "+" or "-". (-12dB ~ 12dB)



Return : Press the Menu Key. (If there is no movement for 5 sec, it will be returned automatically.)



The User EQ may only be set, while a song/music is played back in the [Music Mode].

How to use SD (Secure Digital) Card

Usage of SD Card

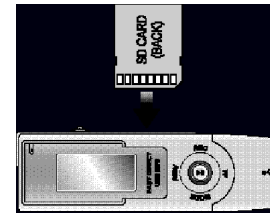
The SD Card may be used for memory capacity extension.

- You may enjoy music by saving music files (MP3 or WMA) in the SD Card.
- When the internal memory capacity lacks while recording, recording continues, since it is converted to SD Card automatically. (FM Recording, Voice Recording, Line-In Recording)
- The SD Card may be used as a simple data moving medium.
- It is convenient to use the SD Card when you intend to move data to another PC.

How to use SD Card

When you insert the SD Card, you need to insert the back side of the SD Card to be shown as in the following figure.

(Please be careful that the SD Card may be damaged, as well as it does not work, if you insert it in an opposite way.)



When the SD Card is inserted or deleted to the player, the following screen is displayed in the LCD.




[SD Card inserted]



[SD Card deleted]

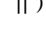
Conversion of Memory by using SD Card (Internal Memory SD Card)

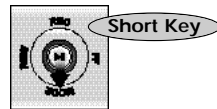
When you push the Navigation Key() to "FF" or "REW" direction in the [Music Mode], it is converted to the SD Card or the Internal Memory following the last file in the Root of the Internal Memory or the SD Card.

EQ/REPEAT/SPEED Setting

How to set function

- EQ/REPEAT/SPEED Selection

Whenever you briefly push Navigation Key() to the direction of "MODE" from the [Music Mode], it will be converted in the following order: EQ REPEAT SPEED (The icon for the function under setting flickers.)



- If you want to decide detailed values, turn the Menu key to the "+/-" direction as follows:



EQ/REPEAT/SPEED setting is only possible in the [Music Mode].



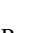


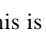
When there is no manipulation for 3 seconds in this process, the player is automatically returned to the previous state.

EQ: Various types of Equalizers are provided suitable to user's tastes when playing a file.

NOR(Normal), ROC(Rock), JAZ(Jazz), CLA(Classic), POP(Pop), USE(User EQ), SRS ON.

This SRS decides whether to apply SRS WOW and TruBass in the [Config Mode]. (As to detailed SRS, see Page 35 [SRS: WOW] Setting and [SRS:TRUBASS] Setting.)

REPEAT : Setting to Repeat mode at file play.

- One Normal(): After a song/music is played back, operation stops.
- One Repeat(): Plays back a song/music repeatedly.
- One Folder(): When all the songs/music in the concerned folder have been played back, operation stops.
- One Folder Repeat(): Plays back all the songs/music in the concerned folder.
- All Normal(): Operation stops after all the songs/musics have been played back in the memory.
- All Repeat(): Plays back all the songs/music in the memory repeatedly.

SPEED : This is useful for language learning because the play speed may be controlled when a file plays.
(50~200%, Normal : Based on 100%)

How to use Browser

Entering into Browser and Exit from Browser

When you press the Menu Key briefly in the [Music Mode], it is converted to a browser function.

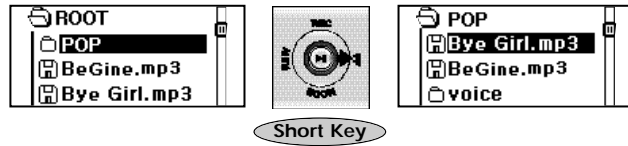


Searching in the Browser Function

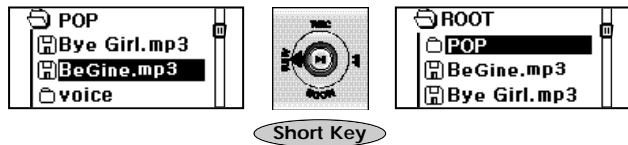
- Searching in the Same Depth



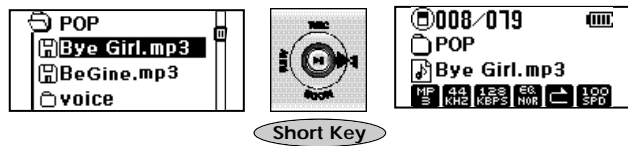
- Moving to Lower Directory



- Moving to Upper Directory

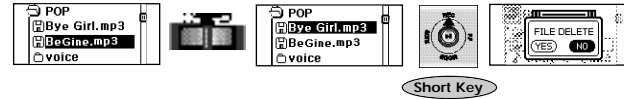


Play Back in the Browser Function

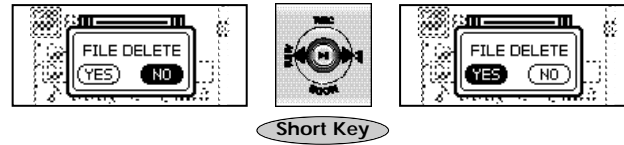


Delete File/Folder in the Browser Function

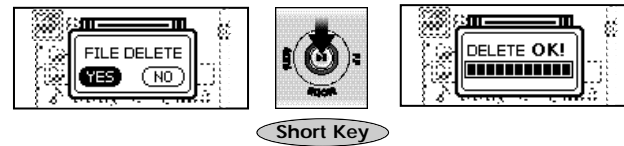
- After selecting the file to be deleted and run to the detail Setting window (Pop-Up Window).



- Select [Delete].

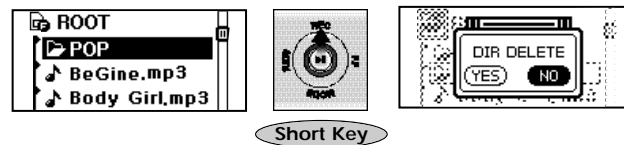


- Go to [Delete].



When you choose folder, the folder will be deleted.

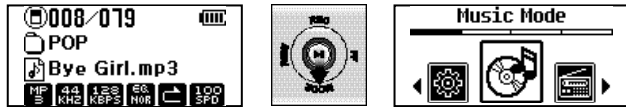
If the folder is not empty, the folder will be not deleted.



To listen to FM Radio

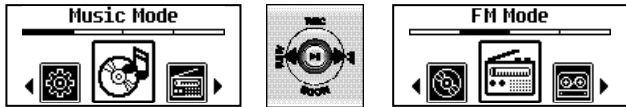
FM Radio Mode

- Go to MODE Choice. (See Page 11 [To change to MODE].)



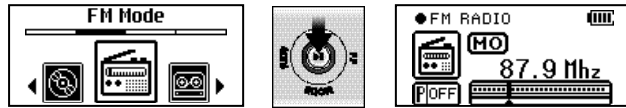
Long Key

- Convert to [FM Mode].



Short Key

- Go to [FM Mode].

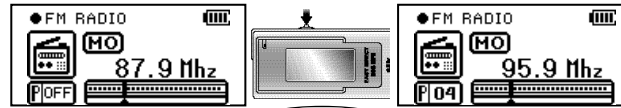


Short Key

PRESET/Non-PRESET mode Setting

The PRESET mode is a mode in which the frequency saved in CH may be moved in the unit of CH, when a random frequency has been saved in the CH. The Non-PRESET mode is the mode in which the random frequency may be moved in the unit of frequency.

The PRESET/Non-PRESET mode is converted whenever the Menu Key is pressed briefly.

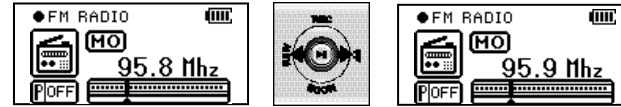


Short Key

Frequency Search

• Searching the frequency unit in the Non-PRESET mode.

- Searching frequency step unit: Move each step in the unit of 0.1MHz.



Short Key

- Searching effective frequency unit: Search continuously until the effective frequency is searched.



Long Key

• Searching channel (CH) unit in the PRESET mode.

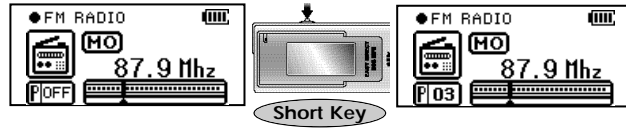


Short Key



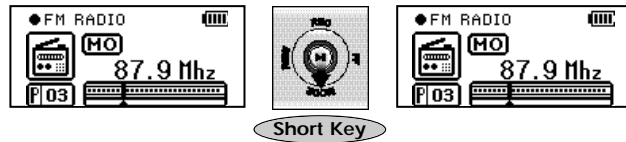
Manual Save of Frequency

Convert to the PRESET mode.

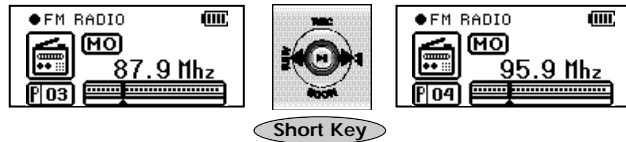


Enter into PRESET save mode.

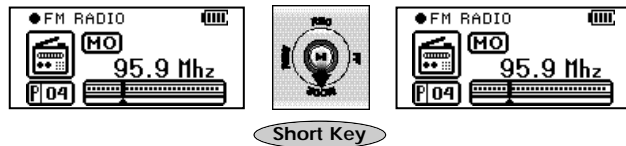
When you enter into the PRESET save mode, CH number flickers at this time.



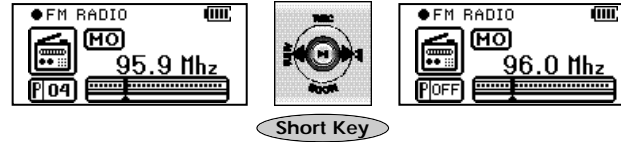
Select CH to save Frequency. (In doing so, CH number flickers.)



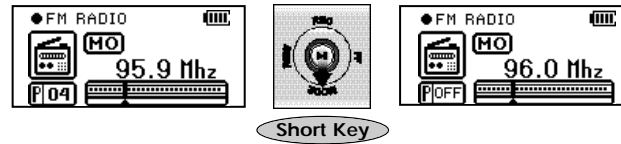
Frequency Conversion. (In doing so, frequency number flickers.)



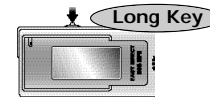
Select frequency to save. (In doing so, frequency number flickers.)

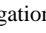


Frequency Save.



Automatic Frequency Save (Auto-Scan).



Cancellation of Automatic Preset Save: When you push the Navigation Key() briefly, when conducting automatic save, the existing CH information is all deleted, while only CH that has been automatically saved so far is saved.

Since an earphone functions as an antenna, you should plug in your earphone when using FM.

FM Recording

This product may record the broadcasting that you are listening, while you listen to FM.

Start/Stop to FM Recording



Pause to FM Recording.

(In doing so, time display “-- : -- : --” flickers.)



The recorded file is automatically created/saved in the “RADIO” folder.

When recording, the recording is carried out through application of the already set [REC SETTING].

You may play the recorded file after converting it to the [Music Mode].

See [REC SETTING] in the [Config Mode] Setting for Recorded File Format.

Voice Recording

If you enter the [REC Mode], you need to set the [Line REC]/[Voice REC] to [Voice REC].

Select to [Voice REC].



Start/Stop to Voice Recording.



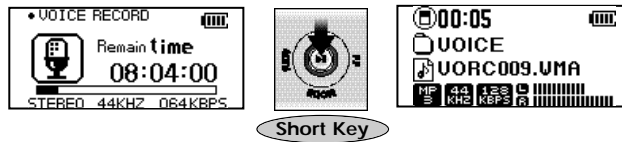
Pause to Voice Recording.

(In doing so, time display “-- : -- : --” flickers.)

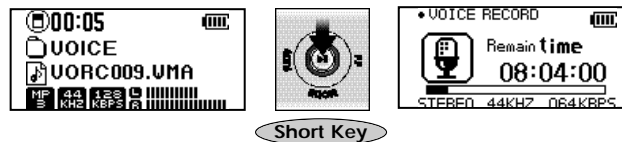


Listening to the Recorded File.

- In doing so, you may playback the immediately previously recorded file, because the MODE turns to the [Music Mode] temporarily.



Returning to the previous [REC Mode] again.



The recorded file is automatically created/saved in the “VOICE” folder.

When the battery was completely discharged or the memory space is not sufficient, the current recording is saved in a file, while a warning message appears.

When you carrying out recording, the already set Recording Format is applied; therefore, you always need to set the Recording Format before recording. (See Page 30 [REC SETTING].)

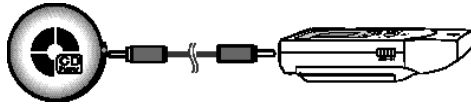
Line-In Recording

If you enter the [REC Mode], you need to set the [Line REC]/[Voice REC] to [Line REC].



Connecting to Other Audio Device

Connect the Line-In cable to the output port (earphone port of external equipment) and the Line-In port of this product.



Line-In Recording

Start/Stop to Line-In Recording.



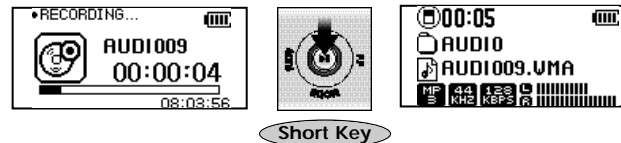
Pause to Line-In Recording.

(In doing so, time display "-- : -- : --" flickers.)

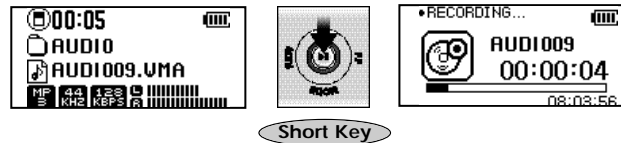


Listening to Recorded file.

- In doing so, you may playback the immediately previously recorded file because the MODE turns to the [Music Mode] temporarily.



Return to previous [REC Mode] again.



You may check if recording is performed, while listening to the output of outside equipment through earphone during the recording.

The recorded file is automatically created/saved in the "AUDIO" folder.

When the battery was completely discharged or the memory space is not sufficient, the current recording is saved in a file, while a warning message appears.

When you carrying out recording, the already set Recording Format is applied; therefore, you always need to set the Recording Format before recording. (See Page 30 [REC SETTING].)

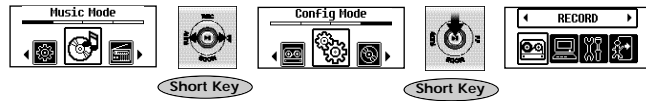


Short Key

[Config Mode] Setting

[Config Mode] Setting

Entering into the [Config Mode]



Configuration

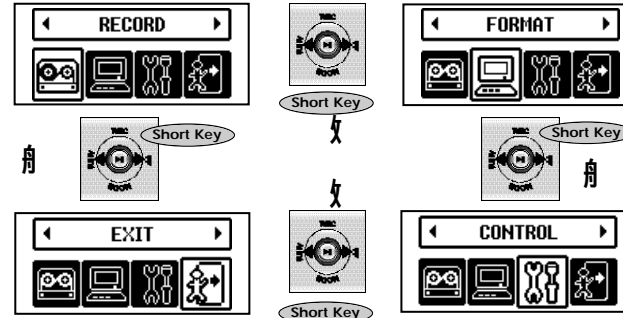
The [Config Mode] is configured as follows:

- [RECORD] Setting
 - [REC SETTING]
- [FORMAT] Setting
 - FLASH MEMORY QUICK FORMATTING
 - FLASH MEMORY NORMAL FORMATTING
 - SD/MMC CARD FORMATTING
- [CONTROL] Setting
 - [FM BAND] Setting
 - [EL TIME] Setting
 - [POWER OFF TIME] Setting
 - [SRS : WOW] Setting
 - [SRS : TRUBASS] Setting
 - [MEDIA SYNC] Setting
- [EXIT] from [Config Mode]
 - Firmware Version Information display
 - Remain Memory Capacity display

How to Manipulate Key

How to manipulate the Key to set the [Config Mode] is as follows:

1) Movement between the Main Menu.



2) Selection.

3) Movement between the Sub Items.



[RECORD] Setting

Select the [RECORD] Setting () icon.

(See page 30 [Movement between the Main Menu].)



- Choice a Sampling Frequency, Bitrate.



[Sampling Freq]	[Bitrate]	[Sampling Freq]	[Bitrate]
44 KHz	32 Kbps	44 KHz	80 Kbps
32 KHz	48 Kbps	44 KHz	96Kbps
44 KHz	64 Kbps	44 KHz	128Kbps

[FORMAT] Setting

Select the "FORMAT" () icon.

(See page 30 [Movement between the Main Menu].)



Short Key

There are "FORMAT NORMAL" and "FORMAT QUICK" in the Internal Memory and there is "CARD FORMAT" in the SD/MMC card.

Select item to be formatting.



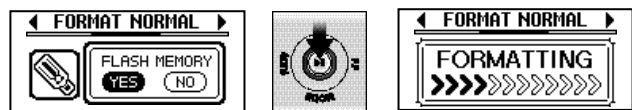
Short Key

Short Key

Decide the status of the Format.

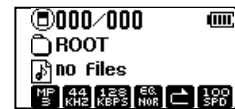


Conduct the Format.



Short Key

The Formatting is complete.



If The SD/MMC CARD is not inserted, the "CARD FORMAT" is not activated; therefore, the SD/MMC Card Format cannot be executed.

Normal Formatting [Low Formatting]

The Normal Format is the function deleting the entire data in the Memory and initializing the Memory by configuring the Track and Sector of Memory. When formatting the Internal Memory, this function is supported.


Cases when Normal Formatting is required:

1. When the file downloading speed is far slower than before.
2. When the file of folder information display breaks or some trouble exists in the sound played.
3. When the deleted file or folder information is still displayed.

Quick Formatting

The Memory initializing formatting is conducted, and both Internal Memory and SD Card support this function.

[CONTROL] Setting

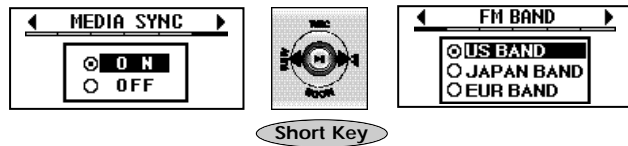
Select the [CONTROL] () icon.
(See page 30[Movement between the Main Menu].)

- FM BAND Setting
- EL TIME Setting
- POWER OFF TIME Setting
- SRS WOW Setting
- SRS TRUBASS Setting
- MEDIA SYNC Setting

[FM BAND] Setting

Users may set the FM Band randomly in order to listen to FM broadcasting anywhere in the world in good quality, and three FM Bands are provided. (US BAND, JAPAN BAND and EUROPE BAND)
(The factory set is US BAND.)

Choice a [FM BAND] in the [CONTROL].



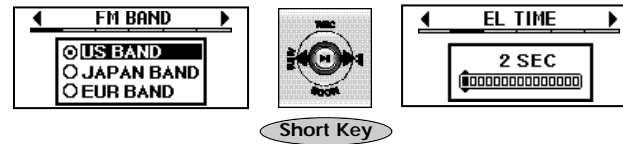
Choice a BAND to Setting.



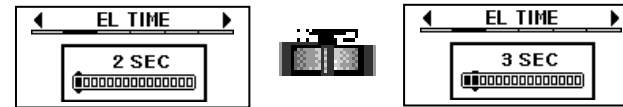
[EL TIME] Setting

This is the function to set the time for the EL Backlight on (Factory set is 4 seconds.)

Choice a [EL TIME].



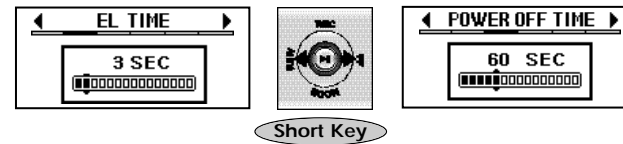
Choice a time to setting (0~ 60 seconds).



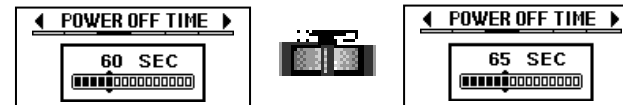
[POWER OFF TIME] Setting

This product's power is off automatically when a certain time elapses without any movement in the stop state. In this manner, the power consumption is minimized. (Factory set time is 60 seconds.)

Choice a [POWER OFF TIME] in the [CONTROL].



Choice a time to setting (15~ 300 seconds).



What is SRS?

This is the function to make the basic sound quality of a file more abundant and magnificent.

WOW

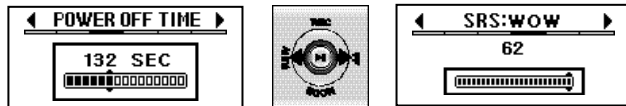
This function enables you to feel deep taste of music with added bass and dynamic scope.

TRUBASS

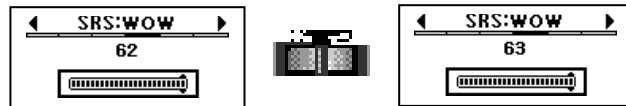
This function is to provide an effect of a bigger speaker through improvement of bass and low frequency.

[SRS : WOW] Setting

Choose a [SRS:WOW] in the [CONTROL].



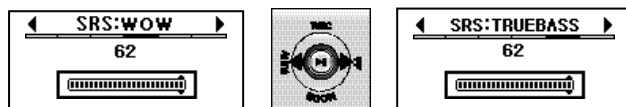
Choice a level (0~ 63).



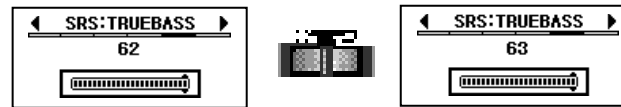
The factory set is '63'.

[SRS:TRUBASS] Setting

Choose a [SRS:TRUBASS] in the [CONTROL].



Choice a level (0~ 63).

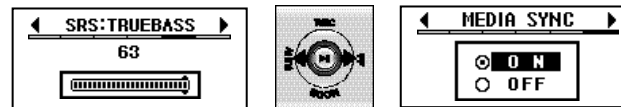


The factory set is "63".

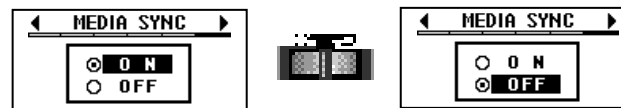
[MEDIA SYNC] Setting

The [MEDIA SYNC] is a setting to decide whether or not the words of a song should be displayed, when the words of a music file have been edited. (The factory set is "OFF".)

Choice a [MEDIA SYNC] in the [CONTROL].



Choice an "ON"/"OFF".



[EXIT] from [Config Mode]

Select the [EXIT] () icon.

(See page 30 [Movement between the Main Menu].)

Display to Firmware information, remain battery capacity, and exit from [Config Mode].

How to use mediaSync Program

How to use mediaSync Program

This product provides two utility programs.

mediaSync Player

- Possible to be used as the MP3 Player program for general PC
See the "Help" in the program as to "How to Use" in detail.

mediaSync Editor

- Editing and correcting of the words of songs possible, and the words of songs information can be saved on the MP3 file.

Please see the "Help" in the program as to "How to Use" in detail.

Firmware Upgrade

Start the Program by double clicking the "mediaSync Player" created on the screen of your PC.

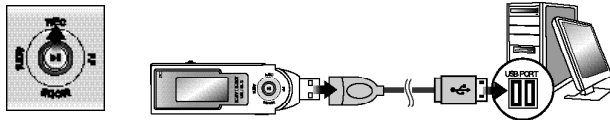
1. Firmware Downloading

- If you want the up to date Firmware, please download the zipped Firmware that has been publicly notified on AMAC website www.amac21.com.
- Unzip the Firmware downloaded from our homepage.

2. Firmware Upgrading

Firmware Upgrading through the "mediaSync Player" program.

- Connect the HAN-500 Player to your PC with push to "REC" direction.



- Execute the "mediaSync Player" program.



Figure [3-1]



Figure [3-2]

- Select the [Firmware Upgrade] in the Menu as in [Figure 3-1] , or click the [Config] Button in [Figure 3-2] .

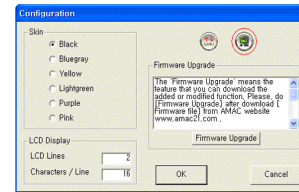


Figure [3-3]

- Click the[Firmware Upgrade] Button in [Figure 3-3].
Manually install the Driver when the [Firmware Upgrade] Button was not activated. (See Page 40[Manually install the Driver].)
When the connection with PC was not properly done, mobile saving device may be attached. In this case, please conduct the procedure again from No. 1.
- After setting up the path of the Firmware file (HAN-500.rom) that has been unzipped from the window of "Open firmware upgrade file" as in [Figure 3-4] , the upgrading is carried out as in

[Figure 3-5] , if you click the “Open” Button.

When the Firmware Upgrading ends, the Progress Bar disappears automatically.



Figure [3-4]

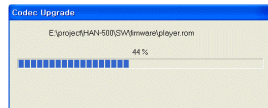


Figure [3-5]

- When the Upgrading is complete, disconnect the HAN-500 Player from your PC, after clicking “OK” Button.

Firmware Upgrading through Copy

- Connect the HAN-500 Player to your PC.
- Copy the unzipped Firmware file (HAN-500.rom) in the internal memory Root of the HAN-500 Player.
 - (When you copy the Firmware file in a random folder, not in the Root, you cannot conduct Firmware upgrading.)
- When the copy is complete, remove the HAN-500 Player from your PC.
 - (When you remove the HAN-500 Player from your PC, you should always follow the normal procedures. See Page 9 [To disconnect fromPC].)
- When you turn on the HAN-500 Player, it will automatically search Firmware file. If the Firmware file exists, the Firmware upgrading will be progressed automatically. If the Firmware file exists, the Firmware upgrading will be progressed automatically.

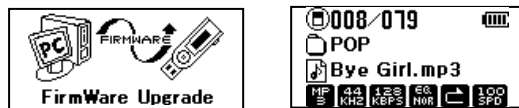


Figure [3-6]

Other and Trouble Diagnosis

Driver Reinstallation

Delete the existing Driver for driver reinstallation
When USB driver is not properly installed after the player is connected to PC, please follow as below.

Information related to USB Driver installation (For only Window 98SE / ME users) When the message on PC shows that the Driver can not be opened after the player is connected to PC. Please follow as below.

If the player is properly connected to PC, click on [START] of Windows, and select [CONTROL PANEL] [SYSTEM] [DEVICE MANAGER] in sequence.

Double click on [Universal Serial Bus Controller], and check whether or not the [AMAC Win98SE/ME USB Mass Storage Driver] exists.

Select and delete [AMAC Win98SE/ME USB Mass Storage Driver], the USB Driver of other devices if they are marked with a question mark (?) or an exclamation mark (!), or [Unknown Device].

Pull out only the USB cable from the player, but leave alone the USB cable connected to the USB port on PC. Then, reboot the PC.

Connect the USB cable to the player after rebooting, and the USB driver is automatically detected.

Please make sure to visit AMAC website www.amac21.com for your detailed information.

Manually install the Driver

When same problem happens, please install CD to set up USB Driver manually as follows:

1. Warning message is appeared as Figure [4-1] when USB Driver isn't set up in Windows 98SE / ME.



Figure [4-1] An Error in recognizing USB Driver

2. Then, click on [OK] Button, and follow as below procedures:

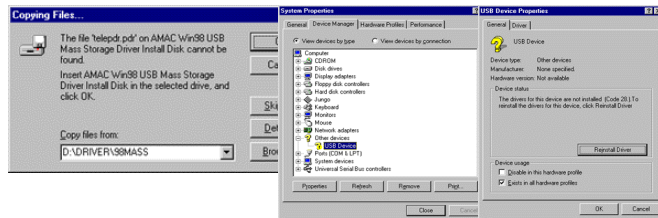


Figure [4-2] Installing USB Driver by manual

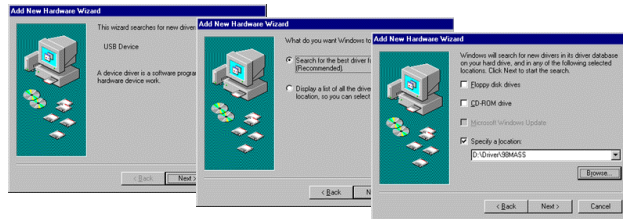


Figure [4-3] Setting up place to install USB Driver

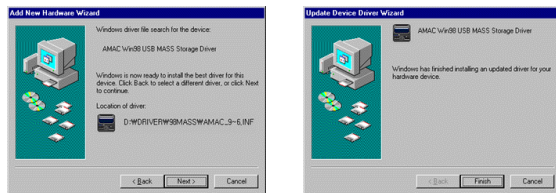


Figure [4-4] Completing to install USB Driver by manual

Check List in Case of Trouble

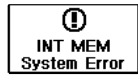
When there is some trouble in the HAN-500 Player, please check the following first:

No Power On	<ul style="list-style-type: none"> • Please check whether it is out of battery or not. • Is the “HOLD” switch on?(If it is on, switch it off)
No Sound or Noise Heard	<ul style="list-style-type: none"> • Check if your earphone is plugged in well, or if there is alien material in the terminal. • Noise or interrupted sound phenomenon can be happened in case of playing damaged data. Please check another file.
FM Reception Bad or Noise Heard	<ul style="list-style-type: none"> • Check if earphone is plugged in well or not. • Check if there are electric devices around the player. If so, move them far away and then operate this product.
File Downloading Not Working or Driver not Recognized.	<ul style="list-style-type: none"> • Check the connection between PC and the player. • Check if the driver has been properly recognized. (If the driver is not recognized, reinstall the driver using the following “ Driver Reinstallation ”)
Nothing Works, since Firmware Upgrading was Suspended, due to Some Problem.	<ul style="list-style-type: none"> • Try to upgrade the Firmware referring to “ Firmware Upgrading (See Page 37).” If you try to upgrade firmware when PC is power-off or during removing player from PC, the Firmware Upgrading was not being executed properly.
The file/folder name does not appear and the words of the concerned song are not displayed.	<ul style="list-style-type: none"> • If the Font file has been damaged, such phenomena may take place. In this case, you need to download the Font file again after format. (See Page 45 [Font Download].)

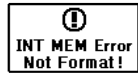
< In the following cases, conduct the Normal Formatting.>

1. When the download speed became remarkably slow, compared with when you purchased this product.
2. When music is played back, sound is broken or the file and folder names are broken.
3. When you conducted formatting, the Formatting was not done.

< Countermeasures when the Following Warning Popup Messages are Displayed>



A problem was caused in the Internal Memory. Conduct the Internal memory. Normal Formatting. (See Page 31 [FORMAT] Setting.)



This warning popup message may appear, when battery has been discharged in the course of Formatting, or when the USB plus was unplugged, while downloading a file. You need to conduct the Internal memory Normal Formatting. (See Page 31 [FORMAT] Setting.)



This is the case that recording cannot continue, due to no Internal Memory capacity. You need to delete unnecessary files in this product.



This is the case that recording cannot continue, due to no SD/MMC Card capacity. You need to delete unnecessary files in this product.



A problem took place in the SD/MMC Card. Conduct the SD/MMC Card Quick Formatting. (See Page 31 [FORMAT] Setting.)

Case 1: When you use the SD/MMC card for the first time after purchasing it.

Case 2: When you inserted the SD/MMC card used in another device which supports another file format.

Case 3: When this product has been off, due to battery discharge in the course of the SD/MMC Card Formatting.

Case 4: When the USB plug was unplugged while you were downloading a file to SD/MMC Card. Conduct the INT. Normal Formatting. (See Page 31 [FORMAT] Setting.)



Case 1: When you insert the SD/MMC Card slowly.

(Insert the card again in a normal speed.)

Case 2: When recognition has been failed, due to wear and tear of the SD/MMC Card Slot of this product.

(In this case, do not disassemble this product, but request an after sales service.)

