



Quick Installation Guide

Air2Net Bluetooth™ Wireless Solutions Wireless CompactFlash Card Model: BT2000-CF

Before You Start

Your new AmbiCom BT2000-CF comes with an automated software installation procedure for Windows XP/2000/ME/98SE and Windows CE 3.0 for Pocket PC and Pocket PC 2002. The procedure automatically installs the software before you install your hardware.

Installing the CompactFlash Card for WinCE

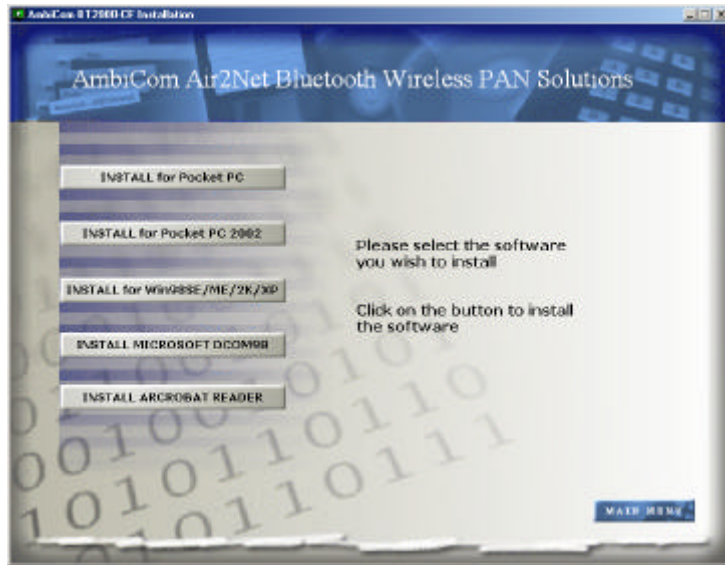
Note: Microsoft ActiveSync software needs to be installed on your Host PC before the installation procedures can take place.

1. Before inserting your BT2000-CF into your PDA, establish a partnership between your PDA and host PC through a serial or USB connection. Insert the Setup CD into an available CD-ROM drive. Unless you have deactivated the auto-run feature of Windows, the following screen should appear automatically.

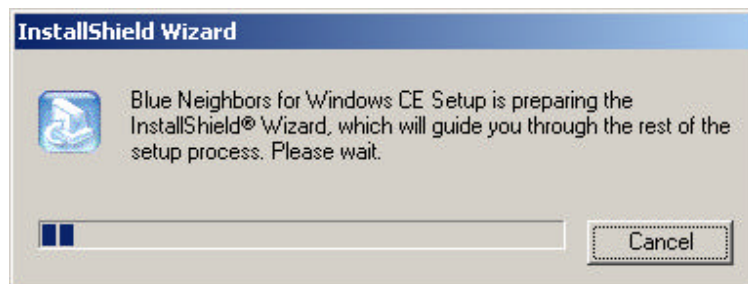


If this screen does not appear automatically, you can access the installation by pressing the *Start* button and selecting *Run*. In the drop down box provided, type “D:\Setup.exe” (“D” represents the CD-ROM drive).

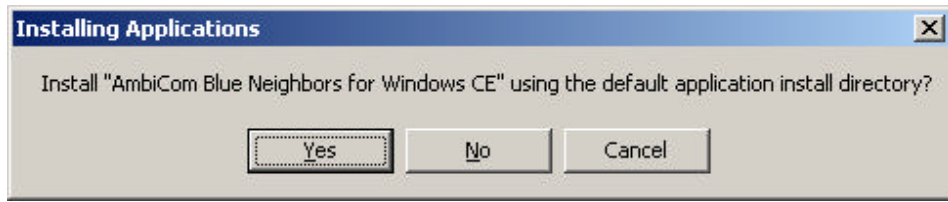
- From the main Setup menu, click on the third button, *INSTALL Air2Net products* to see the following screen.



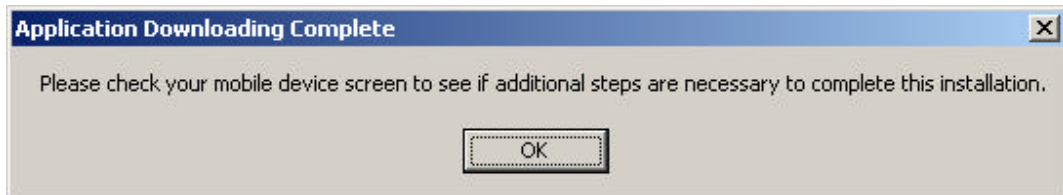
Select the appropriate button for your Pocket PC version to see the following windows.



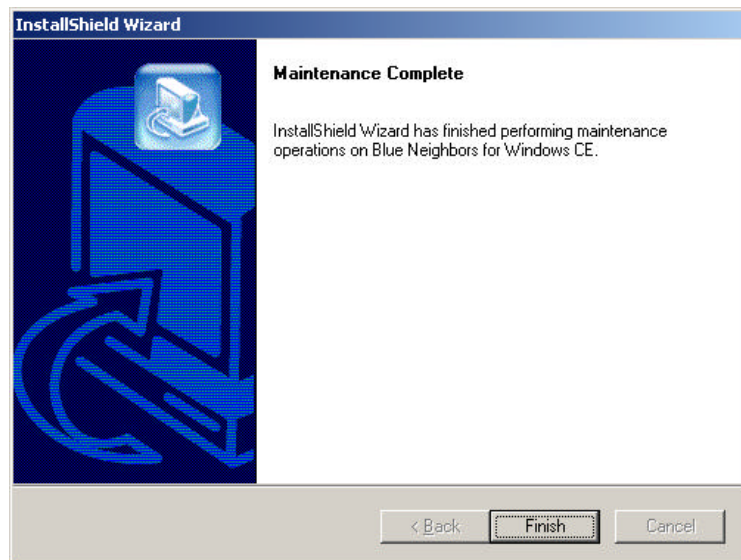
3. The following window will appear. Click “Yes” to install the software in the default application install directory.



4. After the application has been downloaded to your system, the following window will appear. Check your mobile device to see if additional steps are necessary to complete the installation and click “OK”



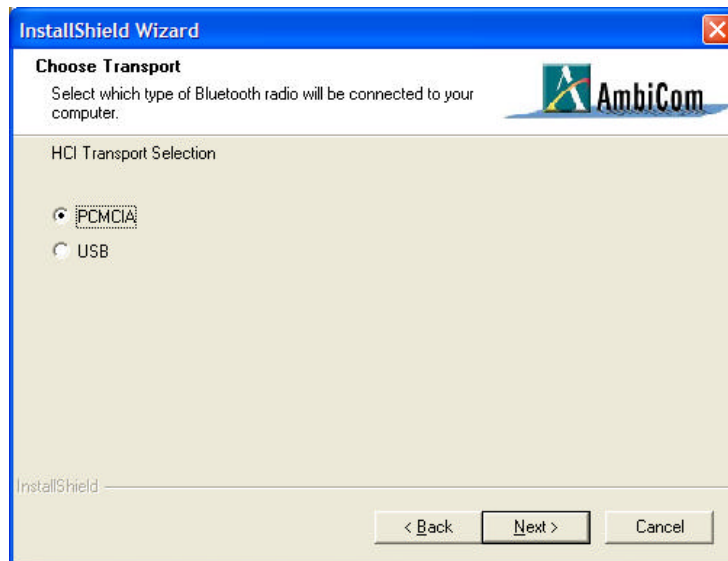
5. The installation wizard has now finished installing the software. Click “Finish” to complete the installation process.



6. After you have installed the software, reset your PDA.

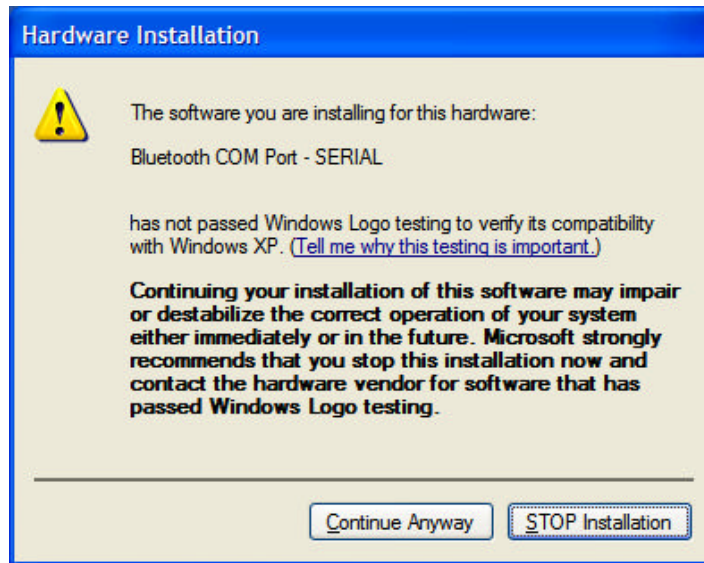
Installing the CompactFlash Card for WinXP

1. Insert the AmbiCom Bluetooth Installation CD into an available CD-ROM drive in your laptop.
2. Run AmbiCom Bluetooth “Setup.exe” and follow the on-screen instructions to install the application program.
3. The following window will appear at the start of the installation process:

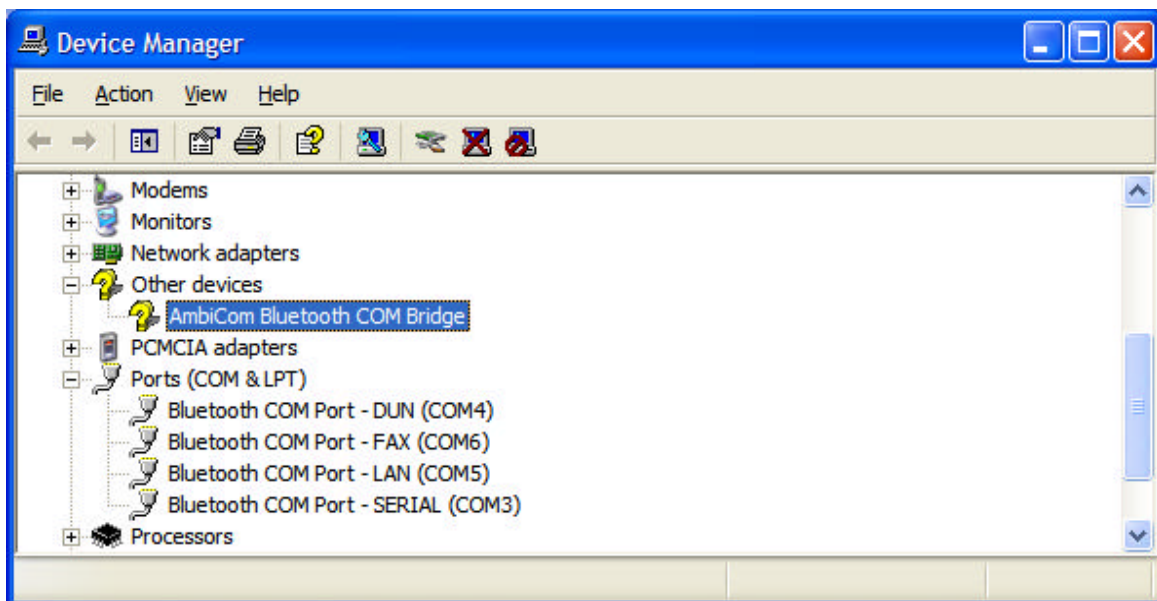


Select the device you have and click “Next” to continue. During the installation, the following windows will appear. The system is installing additional new devices.





Click “Continue Anyway” to complete the installation. After this installation, you can go to the Device Manager and find those devices under “Other devices” and “Ports (COM & LPT)” shown in the following window.

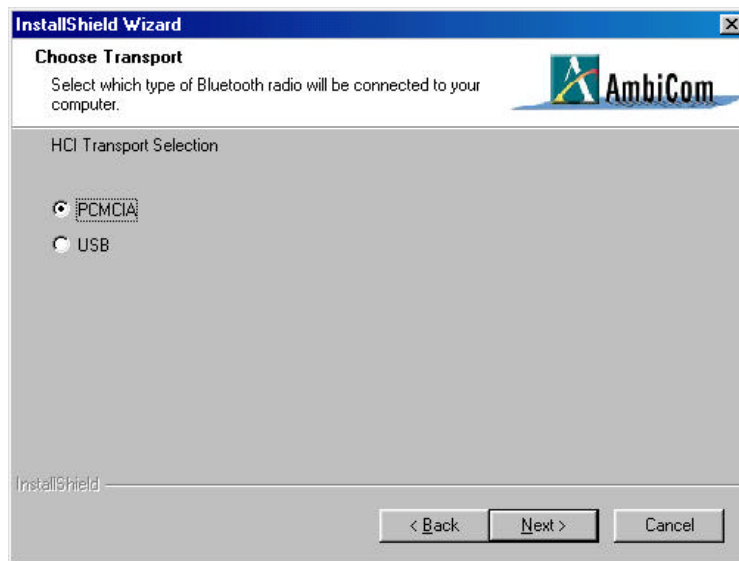


In this window, you can see that “AmbiCom Bluetooth COM Bridge” has a question mark. This is OK because it is a special device and was designed to appear as such.

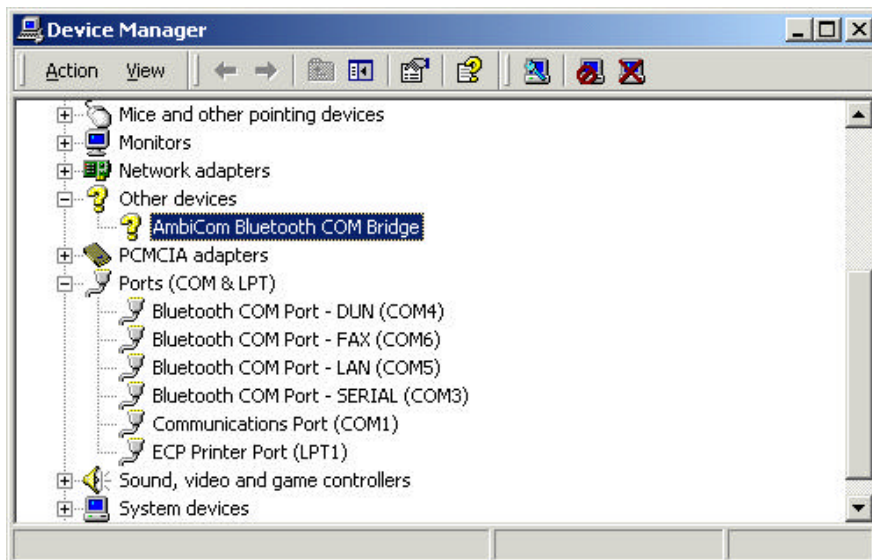
4. After you have restarted your laptop, please connect your AmbiCom Bluetooth CompactFlash Card or USB Adapter to your laptop. The system will automatically install the driver for you. After the system has installed the driver you need to reboot your system. Now you are ready to execute Object Push, File Transfer and Blue Chat by using Bluetooth Neighborhood. Please refer to the User’s Manual for procedures on setting up Bluetooth Neighborhood and Dial-up Networking.

Installing the CompactFlash Card for Win2000

1. Insert the AmbiCom Bluetooth Installation CD into an available CD-ROM drive in your laptop.
2. Run AmbiCom Bluetooth “Setup.exe” and follow the on-screen instructions to install the application program.
3. The following window will appear at the start of the installation process:



4. Choose the device you have and click “Next” to continue. Simply follow the on-screen instructions.
5. After you finished the installation, in the “Device Manager”, you will see the following window.



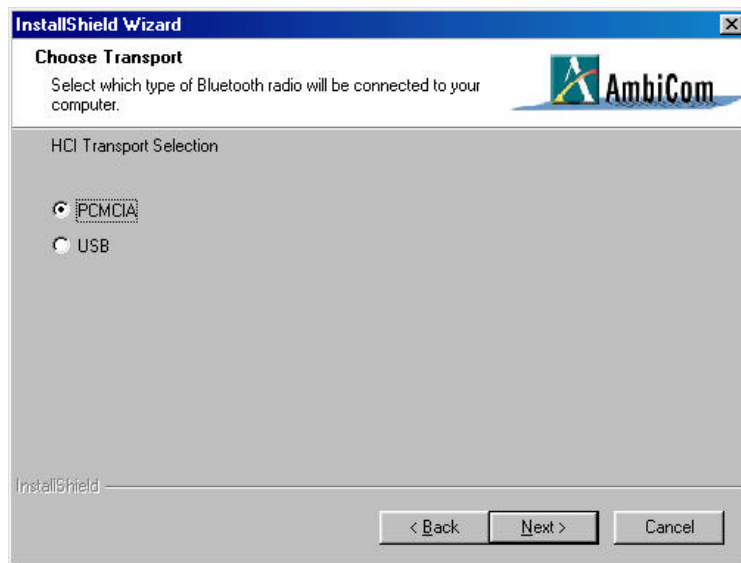
In this window, you can see the “AmbiCom Bluetooth COM Bridge” has a question mark. This is OK because it is a special device and was designed to appear as such.

6. After you have restarted your laptop, please connect your AmbiCom Bluetooth CompactFlash Card or USB Adapter to your laptop. The system will automatically install the driver for you. After the system has installed the driver you need to reboot your system. Now you are ready to execute Object Push, File Transfer and Blue Chat by using Bluetooth Neighborhood. Please refer to the User’s Manual for procedures on setting up Bluetooth Neighborhood and Dial-up Networking.

Installing the CompactFlash Card for WinME/98SE

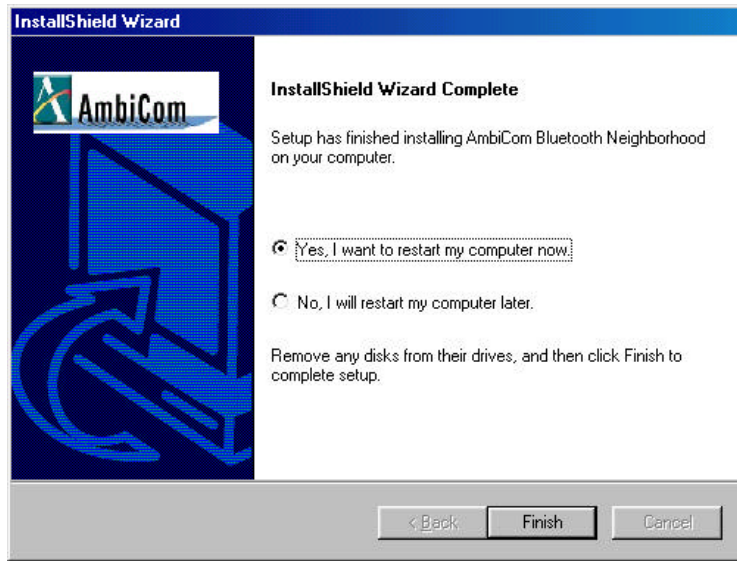
Note: Microsoft’s Dcom98.exe needs to be installed on your WinME/98SE system before the installation procedures can take place.

1. Insert the AmbiCom Bluetooth Installation CD into an available CD-ROM drive in your laptop.
2. Run AmbiCom Bluetooth “Setup.exe” and follow the on-screen instruction to install the application program.
3. The following window will appear at the start of the installation process:



4. Select the device you have and click “Next” to continue. Simply follow the on-screen instructions. At the end of the installation, the system will pop up several windows to install some devices. This is because the system installs some virtual devices for the software to use. Please be patient and wait until the system finishes.

5. After the system finished installing the virtual devices, click “Finish” to reboot your system.



6. After you have restarted your laptop, please connect your AmbiCom Bluetooth CompactFlash Card or USB Adapter to your laptop. The system will automatically install the driver for you. After the system has installed the driver you need to reboot your system. Now you are ready to execute Object Push, File Transfer and Blue Chat by using Bluetooth Neighborhood. Please refer to the User’s Manual for procedures on setting up Bluetooth Neighborhood and Dial-up Networking.

FCC Information

This equipment has been tested and found to comply with the limits for a Class B digital device, pursuant to Part 15 of the FCC Rules. These limits are designed to provide reasonable protection against harmful interference in a residential installation. This equipment generates, uses and can radiate radio frequency energy and, if not installed and used in accordance with the instructions, may cause harmful interference to radio communications. However, there is no guarantee that interference will not occur in a particular installation. Any changes or modifications not expressly approved by AmbiCom could void the user’s authority to operate the equipment.

The radiated output power of this internal wireless radio is far below the FCC radio frequency exposure limits. Nevertheless, the wireless radio shall be used in such a manner that the radio is 2.5 cm or further from the human body. The internal wireless radio operates within guidelines found in radio frequency safety standards and recommendations, which reflect the consensus of the scientific community. AmbiCom therefore believes the internal wireless radio is safe for use by consumers. The level of energy emitted is far less than the electromagnetic energy emitted by wireless devices such as mobile phones. However, the use of wireless radios may be restricted in some situations or environments, such as aboard airplanes. If you are unsure of restrictions, you are encouraged to ask for authorization before turning on the wireless radio.

This device complies with Part 15 of the FCC Rules. Operation is subject to the following two conditions: (1) this device may not cause harmful interference, and (2) this device must accept any interference received, including interference that may cause undesired operation.

NOTE: This equipment has been tested and found to comply with the limits for a Class B digital device, pursuant to Part 15 of the FCC Rules. These limits are designed to provide reasonable protection against harmful interference in a residential installation. This equipment generates, uses and can radiate radio frequency energy and, if not installed and used in accordance with the instructions, may cause harmful interference to radio communications. However, there is no guarantee that interference will not occur in a particular installation. If this equipment does cause harmful interference to radio or television reception, which can be determined by turning the equipment off and on, the user is encouraged to try to correct the interference by one or more of the following measures:

- Reorient or relocate the receiving antenna.
- Increase the separation between the equipment and receiver.
- Connect the equipment into an outlet on a circuit different from that to which the receiver is connected.
- Consult the dealer or an experienced radio/TV technician for help.