



Quick Installation Guide Wireless Bluetooth USB Adapter

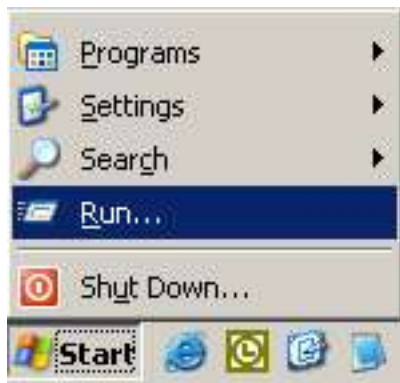
Do NOT Insert The USB Bluetooth Adapter Yet

There are two ways to install the Bluetooth USB device. However, we highly **recommend** using the bundled Widcomm Bluetooth software for your complete Bluetooth solution.

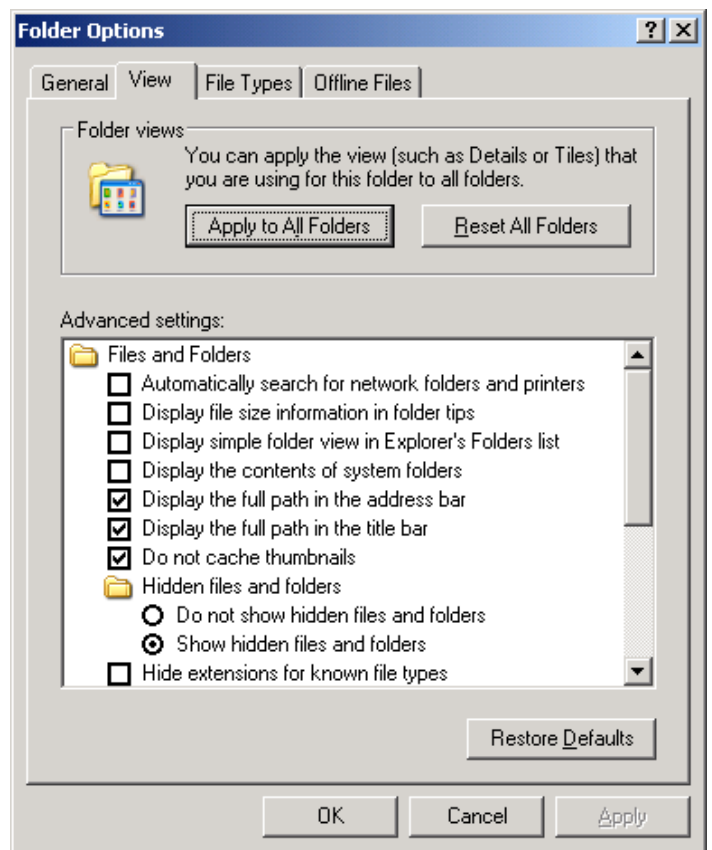
Choose one of the following options that best suit your device and requirement.

(1) Microsoft Windows XP/Vista Solution	(2) Bundled Widcomm Bluetooth Solution
<ul style="list-style-type: none"> • Simple and fast installation. • <i>Required Windows XP latest Service Pack 2 updates or Vista and connects to the Internet during installation.</i> 	<ul style="list-style-type: none"> • Require "3 steps renaming" procedure before installing the software. • Follow steps below to perform the renaming.
<ul style="list-style-type: none"> • Provide <i>limited</i> Bluetooth profiles support and configuration. 	<ul style="list-style-type: none"> • Provide <i>extensive</i> Bluetooth profiles support and configuration.
<ul style="list-style-type: none"> • Limited compatible with Bluetooth USB device. Windows XP will install the generic Bluetooth driver if the Bluetooth USB adapter is one of the supported devices. • See page 5 for more detail. 	<ul style="list-style-type: none"> • <i>Driver support all current BT2-USB class 1 and 2 model.</i>
<ul style="list-style-type: none"> • Follow Appendix A on page 5 	<ul style="list-style-type: none"> • Follow Step A and B on page 3 and 4

[Step A. Renaming The Microsoft Generic Bluetooth Driver]



- Click the **Run** function on the **Start** button.
- Then type **%windir%\inf** and click **OK**.



- Select **Folder Options** from the **Tools** menu.
- Click on the **View** tab.
- In the **Advanced settings**, change the **Hidden files and folders** setting to **Show hidden files and folders**.
- Uncheck **Hide extensions for known file types**.
- Click **OK** twice to return to the inf Windows.



- Search for the **Bth.inf** file.
- Right-click and rename it to **Bth.infbak**.
- **Reboot** your computer. Continue on next page.

[Step B. Installing The Bundled Bluetooth Software]

Do NOT Insert The USB Bluetooth Adapter Yet

1. Place the Setup CD into your CD-ROM drive. Setup should start automatically. If the setup does not start please go to Windows Explorer, locate the CD-ROM and double-click "**Setup.exe**".
2. Click "**Install Bluetooth Driver**", and then click "**Next**".



3. Click "**OK**" if the "**Driver Signature Notice**" appears.



4. When the "**Bluetooth device not found**" window appears. Insert the USB Bluetooth adapter and click "**OK**". Click "**Finish**" to complete the installation. If asked to restart the computer, click "**Yes**".
5. Congratulations! You can double-click "**My Bluetooth Places**" to start using the device.
6. For discovering and pairing your Bluetooth devices to our Bluetooth USB device, please refer to your Bluetooth devices manual for proper procedures and Pass Code (Pin Code).

Appendix A. Using Microsoft Windows XP Service Pack 2 Generic Bluetooth Software

Limitation: Not all AmbiCom Bluetooth USB adapters are Windows XP generic Bluetooth Driver compatible.

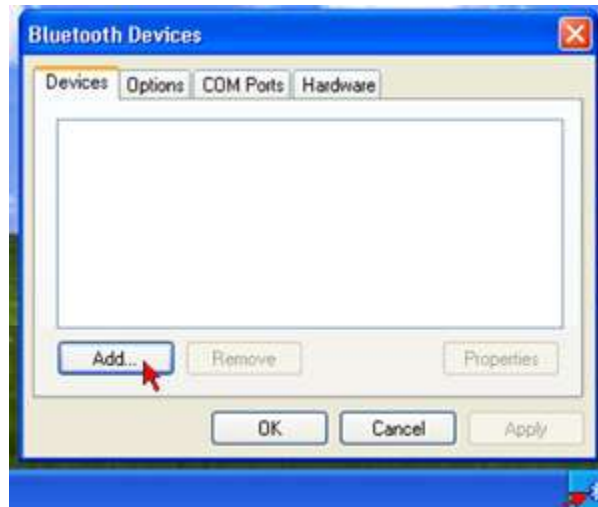
Windows XP will detect and install the generic Bluetooth driver if the Bluetooth USB adapter is one of the supported devices.

Under this method, you will **NOT** be required to install the Bluetooth software bundled with the product. If you have already installed the bundled software, please uninstall it now.

Note: If you have followed Step A on page 3, make sure the bth.infbak file name is restored to its original name and also remove the installed Bluetooth software. Remember to reboot your computer before going to the next step.

Simply insert the USB adapter into any available USB port and Windows should start to configure the system for you.

1. Insert the Bluetooth USB adapter into any available USB port on your computer. Windows will now install the generic Microsoft Bluetooth software for your new hardware.
2. Once the driver installation is completed. Your hardware is ready to use.
3. To add a Bluetooth device, simply double-click the Bluetooth icon from the system tray to open the Bluetooth Devices Window. Follow the Bluetooth wizard to complete the process.



4. Contact Microsoft Corporation for more information regarding Microsoft Bluetooth profile support.
5. For discovering and pairing your Bluetooth devices to our Bluetooth USB device, please refer to your Bluetooth devices manual for proper procedures and Pass Code (Pin Code).

Technical Support

For the most updated tips and drivers, please visit www.ambicom.com/support

Weekdays: 9:00a.m - 6:00p.m. (Monday – Friday. Except holidays)

Phone: (408) 321 - 0822

Email: support@ambicom.com

Website: www.ambicom.com

Warranty

1 Year Limited Warranty

AmbiCom, Inc. warrants its product to be free from defects in materials and workmanship, under normal use and service, for 1 year from the date of purchase from its **Authorized Reseller with proof of purchase**. This warranty gives you specific legal rights. You may also have other rights that vary from state to state.

RMA number and Proof of Purchase are required for all warranty service.

USA/Canada

During the warranty period, AmbiCom, Inc. will, at its option, either repair or replace defective products with similar parts and products. Should the product be identified as defective, the end user is responsible for returning the product to the place of purchase¹ / manufacturer² and the cost of shipping and handling. Any replaced or repaired product has a ninety-day (90-day) warranty or the remainder of the initial warranty period, whichever is longer.

Outside USA/Canada

During the warranty period, AmbiCom, Inc. will, at its option, either repair or replace defective products with similar parts and products. Should the product be identified as defective, the end user is responsible for returning the product to the place of purchase¹ / manufacturer² and the cost of shipping and handling for **sending and returning the product**. Any replaced or repaired product has a ninety-day (90-day) warranty or the remainder of the initial warranty period, whichever is longer. AmbiCom, Inc. shall not be responsible for any software, firmware, information or memory data of customer contained in, stored on, or integrated with any products returned to AmbiCom, Inc. pursuant to any warranty.

¹if within store return policy period. Check with the store policy.

²if store return policy has expired or requesting for a warranty service.

Exclusion: The warranty on your products shall not apply to defect or damages resulting from:

- Improper or inadequate handling or installation of the product operation outside the environmental specification for the products.
- Incidental, contingent, or consequential charges.
- Power spikes or other power related damage.
- Compatibility problems with any other software of hardware products.
- Installation of any other software of hardware products.
- Physical damage causes by misuse, misapplication or negligence.

Warranty Limitations

The warranty set forth above is exclusive and no other warranty, whether written or oral is expressed or implied. AmbiCom, Inc. specifically disclaims the implied warranties of merchantability and fitness for a particular purpose.

AmbiCom, Inc. also specifically disclaims any responsibility for any incidental or consequential damages that its products may cause. A buyer's recourse shall be strictly limited to those contained in this warranty. Some states do not allow these limitations on the length of an implied warranty, so the above limitations or exclusions may not apply to you. However, any implied warranty or merchantability of fitness for a particular purpose is for a period of 1 year on this written warranty. AmbiCom, Inc. reserves the right to change its warranty policy without prior notice. Information provided in this manual is subject to change without prior notice.

For last minute warranty changes that is not printed as time of publishing, please contact support@ambicom.com.

Federal Communication Commission Interference Statement

This equipment has been tested and found to comply with the limits for a Class B digital device, pursuant to Part 15 of the FCC Rules. These limits are designed to provide reasonable protection against harmful interference in a residential installation. This equipment generates, uses and can radiate radio frequency energy and, if not installed and used in accordance with the instructions, may cause harmful interference to radio communications. However, there is no guarantee that interference will not occur in a particular installation. If this equipment does cause harmful interference to radio or television reception, which can be determined by turning the equipment off and on, the user is encouraged to try to correct the interference by one of the following measures:

- Reorient or relocate the receiving antenna.
- Increase the separation between the equipment and receiver.
- Connect the equipment into an outlet on a circuit different from that to which the receiver is connected.
- Consult the dealer or an experienced radio/TV technician for help.

FCC Caution: Any changes or modifications not expressly approved by the party responsible for compliance could void the user's authority to operate this equipment.

This device complies with Part 15 of the FCC Rules. Operation is subject to the following two conditions: (1) This device may not cause harmful interference, and (2) this device must accept any interference received, including interference that may cause undesired operation.

IMPORTANT NOTE:

Radiation Exposure Statement:

This equipment complies with FCC radiation exposure limits set forth for an uncontrolled environment. End users must follow the specific operating instructions for satisfying RF exposure compliance. To maintain compliance with FCC RF exposure requirements, please follow operation instruction as documented in this manual.

This transmitter must not be co-located or operating in conjunction with any other antenna or transmitter.