

Quick Installation Guide

IEEE 802.11n

Wireless-N USB Dongle

(Read Me First)

Please install the driver before inserting the USB dongle

WiFi Protected Setup (WPS)

Pin-Code (Software WPS) or Push-Button Configuration

Your other existing wireless peripherals must support **WPS** feature. After the driver has been installed, simply activate WPS feature on both devices to automatically configure the USB adapter wireless network security. See Page 6.

System Requirements

- *USB 2.0 port (May not work on certain USB 1.1 port, and performance will be greatly reduced)*
- *Windows 2000, XP, or Vista operating system*
- *CD-ROM drive*
- *At least 100MB of available disk space*

Important Notice:

If you want to use all the features provided by the wireless USB dongle or you are using Windows 2000, please install the "*Install driver and AmbiCom Wireless Utility*" or "*Ralink Configuration Tool*" during setup. You will be able to switch to "*Microsoft Wireless Zero Configuration Tool*" if you decided to change later.

Please note the "*Install driver only*" option will not install full features wireless configuration utility. Your new wireless USB dongle will be configured and managed by "*Microsoft Wireless Zero Configuration Tool*". This tool provides minimal configuration and only available on Windows XP and above version.

Driver Installation

This guide will help you to install your USB dongle using the minimum set of parameters. For a detail description of the USB features, please refer to the digital manual on the CD.

1. Insert the Wireless Driver Setup CD into your CD-ROM drive. The setup should start automatically.

Note:

If the Setup screen does not start automatically:

*I. Click the Windows **Start** button, and then select **Run**.*

*II. Browse to the CD-ROM drive and select "**setup.exe**"*

2. Select "**Wireless-N Family**" option and select the corresponding driver.

3. Accept the License agreement. Follow the recommended steps below for your specific model.

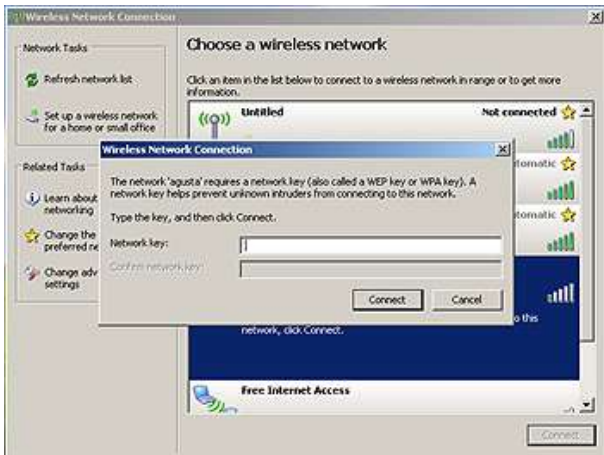
Note: Select "**AmbiCom Wireless Utility**" or "**Ralink Configuration Tool**" only if you require certain special features, such as Pin-Code WPS (software WPS) or changing WPS Pin number.

For all models: *Windows 2000 operating system user should select "AmbiCom Wireless Utility" or "Ralink Configuration Tool". Otherwise, see below:*

WL250N-USB	Select " Install driver and Ralink WLAN Utility " for advance wireless features or " Microsoft Zero Configuration Tool " for simple wireless features. <i>should select the "Ralink WLAN Tool"</i>
WL300N-USB	Select " Ralink Configuration Tool " for advance wireless features or " Microsoft Zero Configuration Tool " for simple wireless features.
WL150N-nUSB WL150N-USBx	Select " AmbiCom Wireless Utility " for advance wireless features or " Microsoft Zero Configuration Tool " for simple wireless features.

5. Click "**Finished**" when the driver installation is done.
6. Insert the USB dongle into an available USB port and wait for the driver to finish its configuration.
7. A new icon will appear at the bottom right corner. Double-click on the icon and open the configuration menu.

8. If you have selected "Install driver only" option, double-click the wireless icon appear at the bottom right corner. If your wireless network has been setup with a wireless security code, you will need to type the code to gain access.



Wi-Fi Protected Setup (WPS) Pin-Code (Software WPS)/Push Button Configuration

Depends on your model, the USB adapter support either Pin-Code WPS (software based WPS) or both Pin-Code and Push Button WPS features. WPS is a standard for easy and secure to add a new wireless device to your protected wireless home network without typing or configure complex wireless security setting with a compatible devices.

If your USB does not comes with a button on the USB dongle, the WPS feature is configure using the "AmbiCom Wireless Utility" or "Ralink Configuration Tool". Otherwise, simply press the WPS button on both the USB dongle and a WPS capable wireless router devices for 2 seconds (refer to your router manual) to automatically configure the wireless security. Your new device will be joining your protected wireless home network within minutes.

For a detailed information about features and functions, you may refer to digital manual on the Driver installation CD.

Technical Support

Weekdays: 9:00a.m - 6:00p.m.
(Monday – Friday. Except holidays)

Phone: (408) 321 – 0822

Email: support@ambicom.com

Website: www.ambicom.com

Disclaimer

This product is design for indoor use only. AmbiCom Inc., is not liable for the personal injury and property damage cause by misuse of this product. By using this product, users agree to obey their local regulations, public safety laws, and maintaining safety environment to other user. Specifications are subject to change without prior notice. All other brands and names are the property of their respective owners.

Warranty - 1 Year Limited Warranty

AmbiCom, Inc. warrants its product to be free from defects in materials and workmanship, under normal use and service, for 1 year from the date of purchase from its **Authorized Reseller with proof of purchase**. This warranty gives you specific legal rights. You may also have other rights that vary from state to state.

RMA number and Proof of Purchase are required for all warranty service.

USA/Canada

During the warranty period, AmbiCom, Inc. will, at its option, either repair or replace defective products with similar parts and products. Should the product be identified as defective, the end user is responsible for returning the product to the place of purchase¹ / manufacturer² and the cost of shipping and handling. Any replaced or repaired product has a ninety-day (90-day) warranty or the remainder of the initial warranty period, whichever is longer.

Outside USA/Canada

During the warranty period, AmbiCom, Inc. will, at its option, either repair or replace defective products with similar parts and products. Should the product be identified as defective, the end user is responsible for returning the product to the place of purchase¹ / manufacturer² and the cost of shipping and handling for **sending and returning the product**. Any replaced or repaired product has a ninety-day (90-day) warranty or the remainder of the initial warranty period, whichever is longer. AmbiCom, Inc. shall not be responsible for any software, firmware, information or memory data of customer contained in, stored on, or integrated with any products returned to AmbiCom, Inc. pursuant to any warranty.

¹if within store return policy period. Check with the store policy.

²if store return policy has expired or requesting for a warranty service.

Exclusion: The warranty on your products shall not apply to defect or damages resulting from:

- Improper or inadequate handling or installation of the product operation outside the environmental specification for the products.
- Incidental, contingent, or consequential charges.
- Power spikes or other power related damage.

- Compatibility problems with any other software or hardware products.
- Installation of any other software or hardware products.
- Physical damage caused by misuse, misapplication or negligence.

Warranty Limitations

The warranty set forth above is exclusive and no other warranty, whether written or oral is expressed or implied. AmbiCom, Inc. specifically disclaims the implied warranties of merchantability and fitness for a particular purpose. AmbiCom, Inc. also specifically disclaims any responsibility for any incidental or consequential damages that its products may cause. A buyer's recourse shall be strictly limited to those contained in this warranty. Some states do not allow these limitations on the length of an implied warranty, so the above limitations or exclusions may not apply to you. However, any implied warranty or merchantability of fitness for a particular purpose is for a period of 1 year on this written warranty. AmbiCom, Inc. reserves the right to change its warranty policy without prior notice. Information provided in this manual is subject to change without prior notice. For last minute warranty changes that is not printed as time of publishing, please contact support@ambicom.com.

Federal Communication Commission - Interference Statement

This equipment has been tested and found to comply with the limits for a Class B digital device, pursuant to Part 15 of FCC Rules. These limits are designed to provide reasonable protection against harmful interference in a residential installation. This equipment generates, uses, and can radiate radio frequency energy and, if not installed and used in accordance with the instructions, may cause harmful interference to radio communications. However, there is no guarantee that interference will not occur in a particular installation. If this equipment does cause harmful interference to radio or television reception, which can be determined by turning the equipment off and on, the user is encouraged to try to correct the interference by one or more of the following measures:

1. Reorient or relocate the receiving antenna.
2. Increase the separation between the equipment and receiver.
3. Connect the equipment into an outlet on a circuit different from that to which the receiver is connected.
4. Consult the dealer or an experienced radio technician for help.

FCC Caution

This device and its antenna must not be co-located or operating in conjunction with any other antenna or transmitter. This device complies with Part 15 of the FCC Rules. Operation is subject to the following two conditions: (1) this device may not cause harmful interference, and (2) this device must accept any interference received, including interference that may cause undesired operation. Any changes or modifications not expressly approved by the party responsible for compliance could void the authority to operate equipment.

Federal Communication Commission (FCC) Radiation Exposure Statement

This equipment complies with SAR for general population/uncontrolled exposure limits in ANSI/IEEE C95.1-1999 and had been tested in accordance with the measurement methods and procedures specified in OET Bulletin 65 Supplement C.

The equipment version marketed in US is restricted to usage of the channels 1-11 only.

R&TTE Compliance Statement

This equipment complies with all the requirements of DIRECTIVE 1999/5/EC OF THE EUROPEAN PARLIAMENT AND THE COUNCIL of March 9, 1999 on radio equipment and telecommunication terminal Equipment and the mutual recognition of their conformity (R&TTE)

The R&TTE Directive repeals and replaces in the directive 98/13/EEC (Telecommunications Terminal Equipment and Satellite Earth Station Equipment) As of April 8, 2000.

Safety

This equipment is designed with the utmost care for the safety of those who install and use it. However, special attention must be paid to the dangers of electric shock and static electricity when working with electrical equipment. All guidelines of this and of the computer manufacture must therefore be allowed at all times to ensure the safe use of the equipment.

EU Countries Intended for Use

The ETSI version of this device is intended for home and office use in Austria, Belgium, Denmark, Finland, France, Germany, Greece, Ireland, Italy, Luxembourg, the Netherlands, Portugal, Spain, Sweden, and the United Kingdom.

The ETSI version of this device is also authorized for use in EFTA member states: Iceland, Liechtenstein, Norway, and Switzerland.

EU Countries Not intended for use

None.