



# **D170 Parts Manual Phase 7**

---

---

**JLA Limited**  
Meadowcroft Lane, Halifax Road  
Ripponden  
West Yorkshire, England  
HX6 4AJ

Telephone: 01422 822282 / Fax: 01422 824390

JLA Part No. 450597

## Retain This Manual in a Safe Place for Future Reference

This product embodies advanced concepts in engineering, design, and safety. If this product is properly maintained, it will provide many years of safe, efficient, and trouble free operation.

**Only qualified technicians should service this equipment.**

**OBSERVE ALL SAFETY PRECAUTIONS** displayed on the equipment or specified in the installation manual included with the dryer.

The following “**FOR YOUR SAFETY**” caution must be posted near the dryer in a prominent location.

### FOR YOUR SAFETY

Do not store or use gasoline or other flammable vapors and liquids in the vicinity of this or any other appliance.

### POUR VOTRE SÉCURITÉ

Ne pas entreposer ni utiliser d'essence ni d'autres vapeurs ou liquides inflammables à proximité de cet appareil ou de tout autre appareil.

We have tried to make this manual as complete as possible and hope you will find it useful. The manufacturer reserves the right to make changes from time to time, without notice or obligation, in prices, specifications, colors, and material, and to change or discontinue models. The illustrations included in this manual may not depict your particular dryer exactly.

## IMPORTANT

For your convenience, log the following information:

DATE OF PURCHASE \_\_\_\_\_ MODEL NO. **D170**

RESELLER'S NAME \_\_\_\_\_

Serial Number(s) \_\_\_\_\_

\_\_\_\_\_

\_\_\_\_\_

Replacement parts can be obtained from your reseller or JLA. When ordering replacement parts from the factory, you can FAX your order to JLA at 1 422-824390 or telephone your order directly to the JLA Parts Department at 1 422-822282. Please specify the dryer model number and serial number in addition to the description and part number, so that your order is processed accurately and promptly.

### “IMPORTANT NOTE TO PURCHASER”

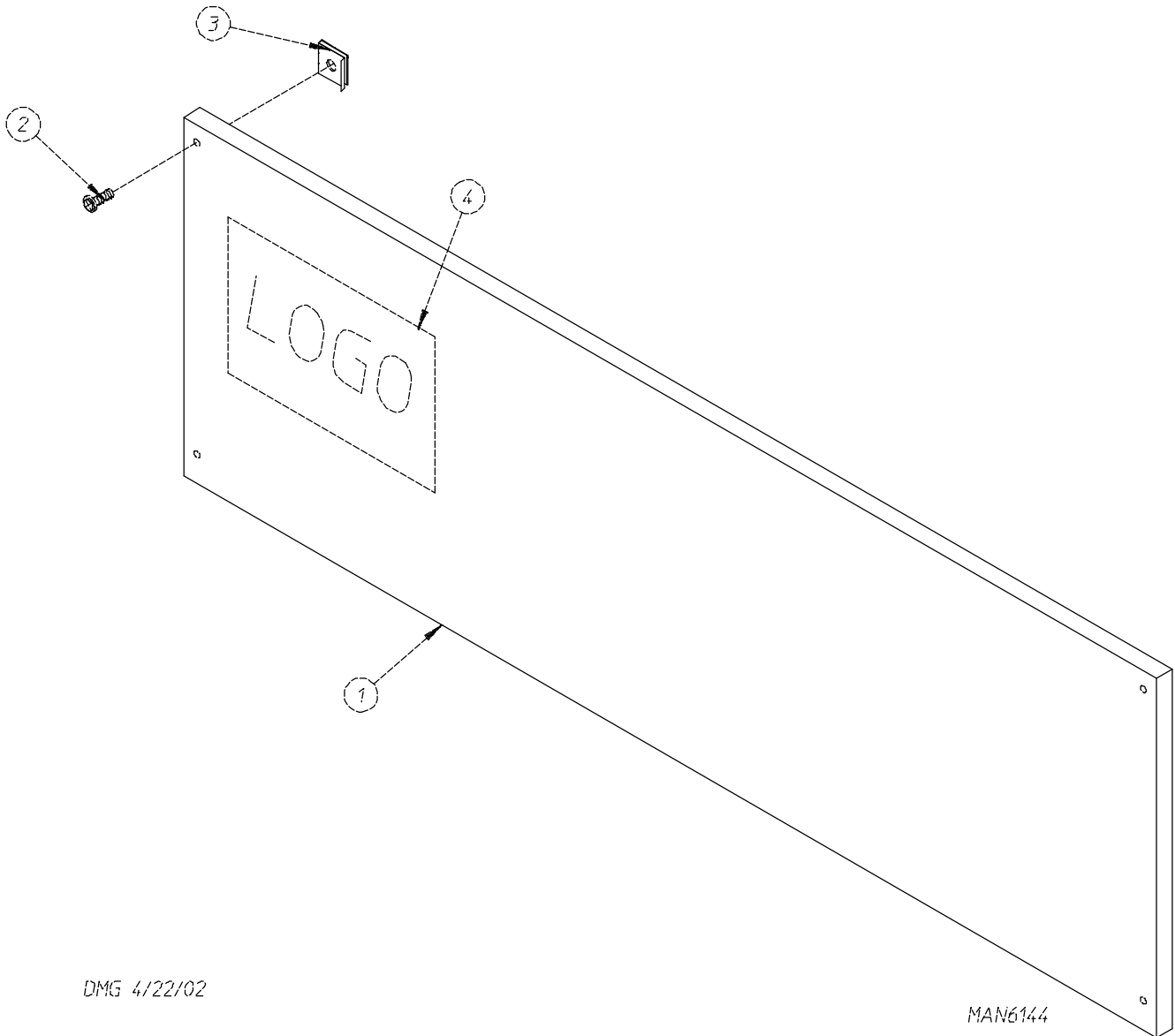
Information must be obtained from your local gas supplier on the instructions to be followed if the user smells gas. These instructions must be posted in a prominent location near the dryer.

# Table of Contents

Control Door Assembly .....	4
Phase 7 Non-Coin Microprocessor Control Panel Assembly .....	5
Front Panel/Main Door Assemblies .....	6, 7
Main Door Switch Assembly .....	8
Tumbler Assembly .....	9
Phase 7 Rotational Sensor Assembly .....	10
Lint Door Assembly .....	11
Lint Drawer/Lint Drawer Switch Box Assemblies for Models Mfd. as of February 1, 2003 .....	12
Lint Drawer/Lint Drawer Switch Box Assemblies for Models Mfd. prior to February 1, 2003 .....	13
Fan (Squirrel Cage) Shaft Mount Assembly .....	14
Blower Motor Mount Assembly .....	15
Microprocessor Temperature Sensor Bracket Assembly .....	16
Drive Shaft Assembly .....	17
Idler Shaft Assembly .....	18
Speed Reducer Shaft Assembly .....	19
Totally Enclosed, Non-Venting Drive Motor Assembly .....	20
CE Hot Surface Ignition Burner Assembly .....	21
Direct Spark Ignition Burner Assembly .....	22, 23
Sail Switch Assembly .....	24
Air Jet Assembly .....	25
Microprocessor Reversing Contactor Mounting Panel Assembly for 208-240V Transformers .....	26, 27
Microprocessor Reversing Contactor Mounting Panel Assembly for 380-416V Transformers .....	28, 29
Microprocessor Reversing Contactor Mounting Panel Assembly for 460-480V Transformers .....	30, 31
Steam Damper Assembly for Steam Models Only .....	32
Pneumatic Valve Assembly for Gas Models Only .....	33
Pneumatic Valve Assembly for Steam Models Only .....	34
Top Console Assembly .....	35
S.A.F.E. Temperature Probe Assembly .....	36
S.A.F.E. Solenoid Assembly for Models Mfd. as of September 23, 2004 .....	37
S.A.F.E. Solenoid Assembly .....	38
Back Guard Assemblies .....	39

# Control Door Assembly

---



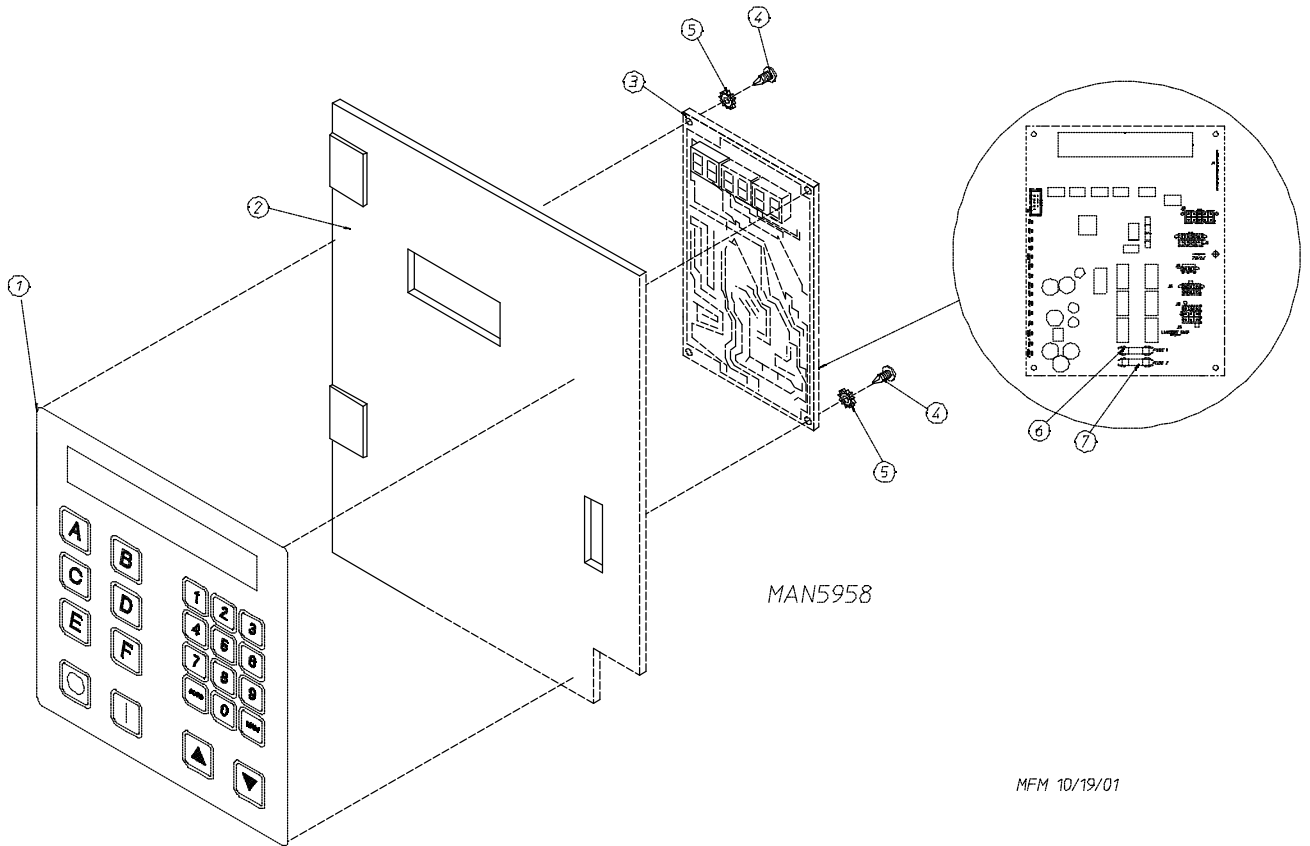
---

<u>Illus. No.</u>	<u>Part No.</u>	<u>Qty.</u>	<u>Description</u>
1*	883256	1	Phase 7 Control Door (gas)
	883322	1	Phase 7 Control Door (steam)
2	150314	4	#10-32 x 1/2" TORX Screw
3	154011	4	#10-32 Multi-Thread U-Nut
4**	—	1	Logo

\* Specify color when ordering.

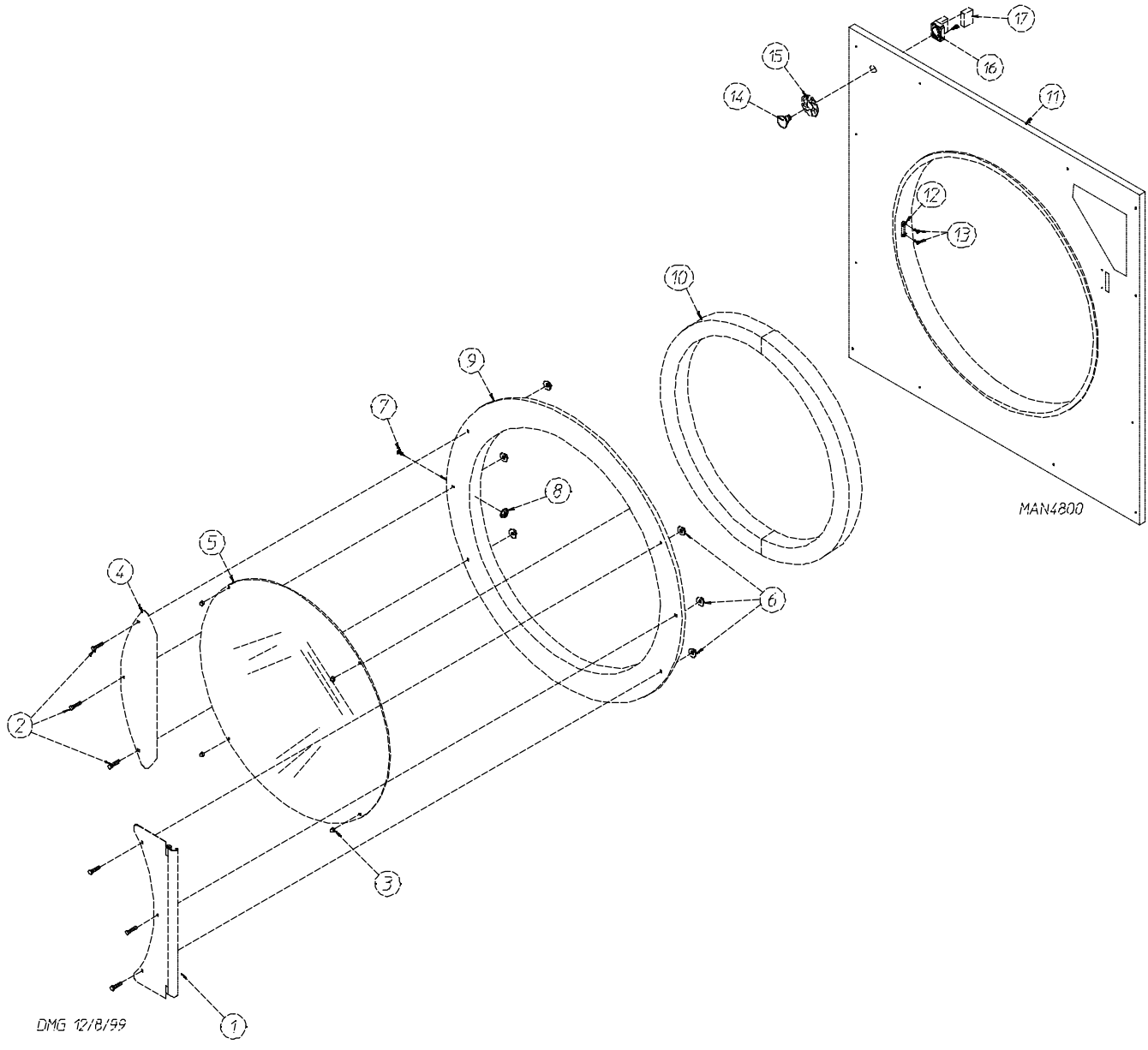
\*\* Contact reseller for logo.

# Phase 7 Non-Coin Microprocessor Control Panel Assembly



<u>Illus. No.</u>	<u>Part No.</u>	<u>Qty.</u>	<u>Description</u>
1	112577	1	Phase 7 Non-Coin Keypad (for models mfd. as of September 11, 2004)
	112571	1	Phase 7 Non-Coin Keypad (for models mfd. prior to September 11, 2004)
2	850980	1	Phase 7 Microprocessor Controller (computer) Panel Only
	822754	1	Phase 7 Non-Coin Reversing Microprocessor Controller (computer) Control Panel Assembly Complete (includes illus. nos. 1 through 7)
3	887005	1	Phase 7.2.2 Non-Coin Microprocessor Controller (computer) with Sensor Activated Fire Extinguishing System Only (for models mfd. as of December 3, 2003)
	887002	1	Phase 7.2.1 Non-Coin Microprocessor Controller (computer) with Sensor Activated Fire Extinguishing System Only (for models mfd. prior to December 3, 2003)
4	150005	2	#6-32 x 3/4" Phillips Round Head Machine Screw
5	153010	2	#6 Star Washer
6	136016	1	5 amp Fuse
7	136097	1	500 mA Fuse

# Front Panel/Main Door Assemblies

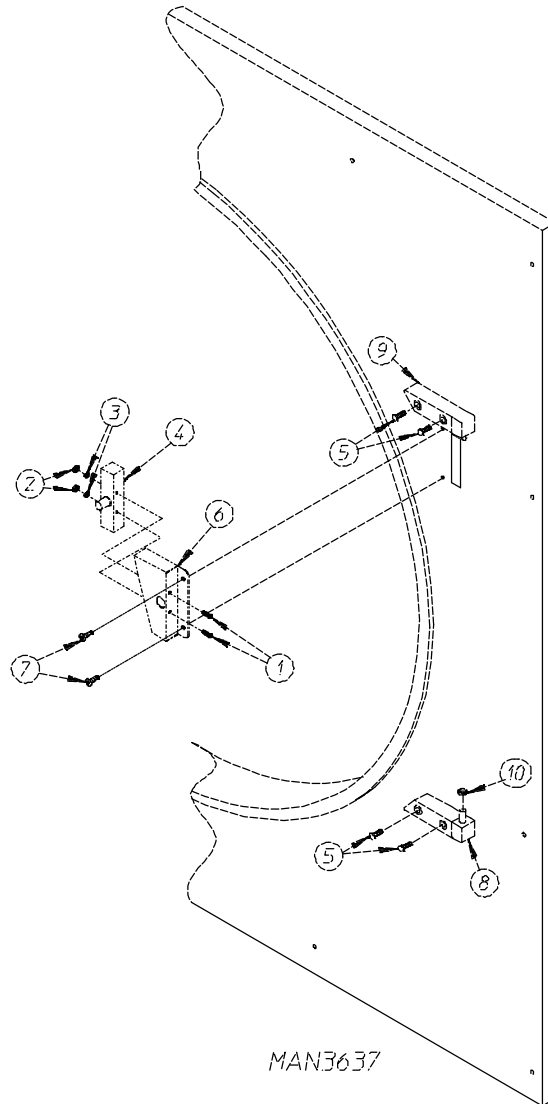


## Front Panel/Main Door Assemblies

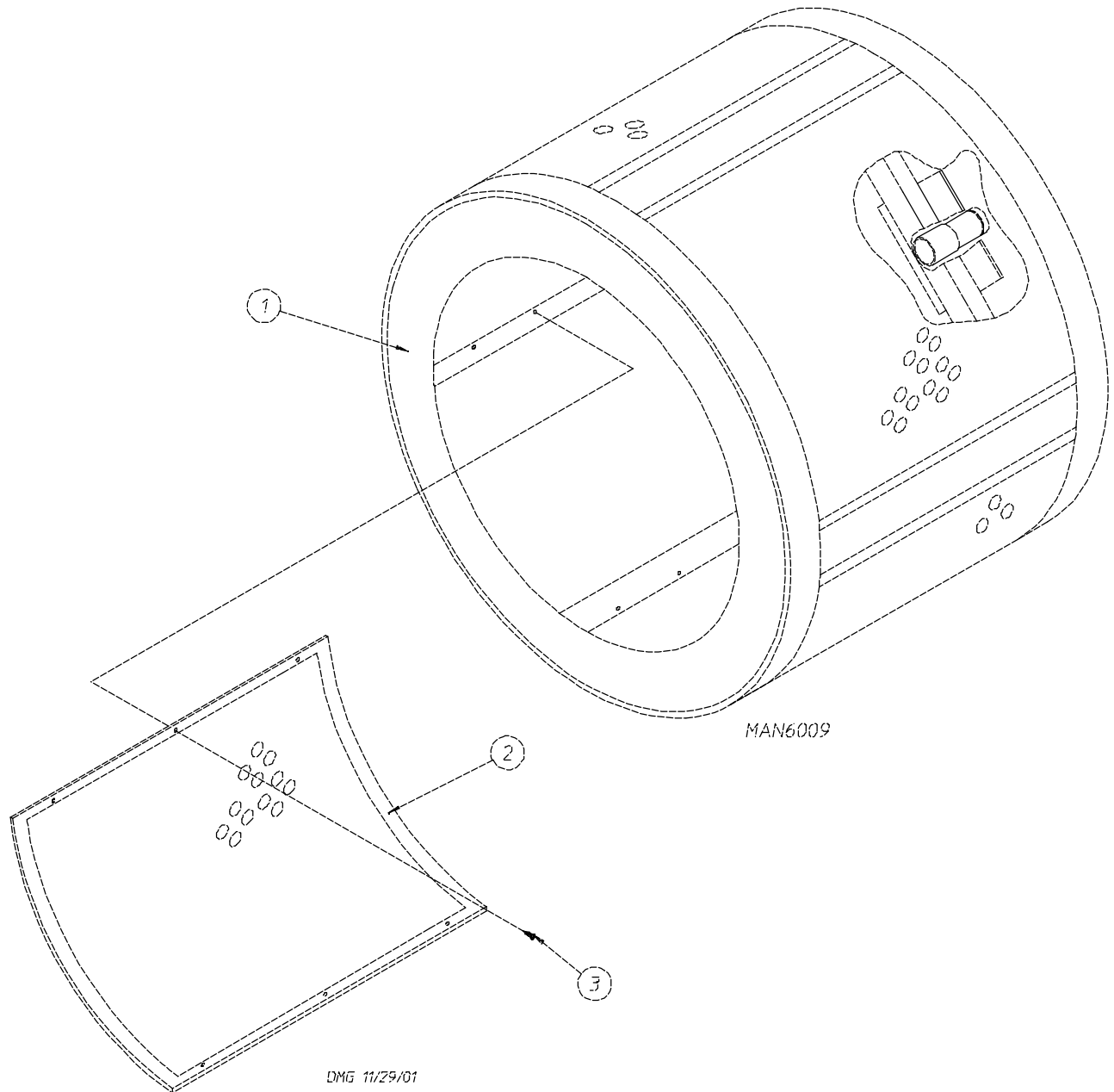
---

<u>Illus. No.</u>	<u>Part No.</u>	<u>Qty.</u>	<u>Description</u>
1	881685	1	White Main Door Hinge
	882296	1	Coral Wrinkle Blue Main Door Hinge
2	881740	6	1/4-20 x 5/8" White Carriage Bolt
	881739	6	1/4-20 x 5/8" Coral Wrinkle Blue Carriage Bolt
3	151012	1	#10-32 White Acorn Nut
4	881688	1	White Main Door Handle
	881737	1	Blue Main Door Handle
5	102214	1	30" Door Glass
	170730	1	Door Glass Adhesive (10.3 oz. cartridge)
6	881806	6	1/4-20 White Free Spin Wash Nut
	882293	6	1/4-20 Coral Wrinkle Blue Free Spin Wash Nut
7	150120	1	Main Door Latch Screw (#10-32 dome hex head screw)
8	151010	1	#10-32 Acorn Nut
9	881689	1	White Main Door Assembly Complete (includes illus. nos. 2 through 10)
	881761	1	Coral Wrinkle Blue Main Door Assembly Complete (includes illus. nos. 2 through 10)
	881966	1	White Main Door Ring
	882305	1	Coral Wrinkle Blue Cold Rolled Steel Large Main Door Ring
10	882411	1	Extruded Steel Door Gasket
11	882503	1	White Front Panel Assembly (includes illus. nos. 1, 15, and 16)
	882504	1	Coral Wrinkle Blue Front Panel Assembly (includes illus. nos. 1, 15, and 16)
12	170330	1	Friction Door Latch
13	154215	2	5/32" Pop Rivet
14	122351	1	"EMERGENCY STOP" Push-Pull Button
15	122419	1	"EMERGENCY STOP" Nameplate
16	132387	1	Normally Closed Contact Block
17	132395	1	Normally Closed Contact Block with Base

# Main Door Switch Assembly

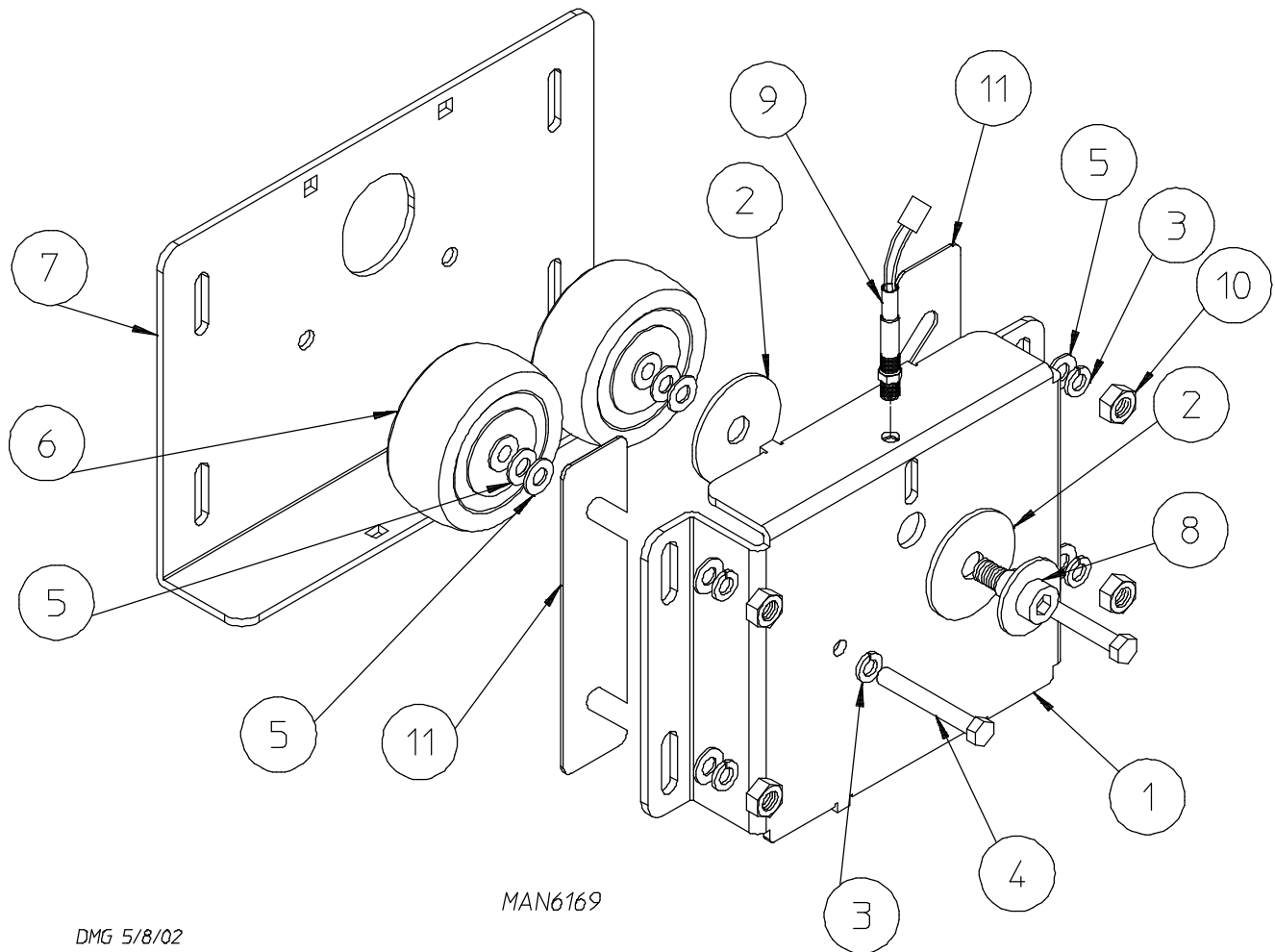


<u>Illus. No.</u>	<u>Part No.</u>	<u>Qty.</u>	<u>Description</u>
1	150006	2	#6-32 x 7/8" Phillips Pan Head Machine Screw
2	152013	2	#6-32 Hex Nut
3	153010	2	#6 Star Washer
4	137005	1	Single-Pole Door Switch
5	150443	4	1/4-20 x 3/4" Stainless Steel Cap Screw
6	881687	1	White Main Door Switch Housing Only
	881695	1	Blue Main Door Switch Housing Only
	881702	1	White Main Door Switch with Housing Assembly (includes illus. nos. 1 through 4 and 6)
	881700	1	Blue Main Door Switch with Housing Assembly (includes illus. nos. 1 through 4 and 6)
7	150443	2	1/4-20 x 3/4" Stainless Steel Cap Screw
8	881441	1	White Bottom Hinge Block
	881735	1	Blue Bottom Hinge Block
9	881440	1	White Top Hinge Block
	881736	1	Blue Top Hinge Block
10	153031	1	Nylon Washer



<u>Illus. No.</u>	<u>Part No.</u>	<u>Qty.</u>	<u>Description</u>
1	835402	1	Stainless Steel Tumbler Assembly Complete (for models mfd. as of November 10, 2003) (includes illus. nos. 1 through 3)
	835375	1	Tumbler Assembly Complete (for models mfd. prior to November 10, 2003) (includes illus. nos. 1 through 3)
2	390329	4	Stainless Steel Perforated Tumbler Panel (for models mfd. as of November 10, 2003)
	883578	4	Perforated Tumbler Panel (for models mfd. prior to November 10, 2003)
3	150118	24	1/4-20 x 1/4" Phillips Pan Head Screw

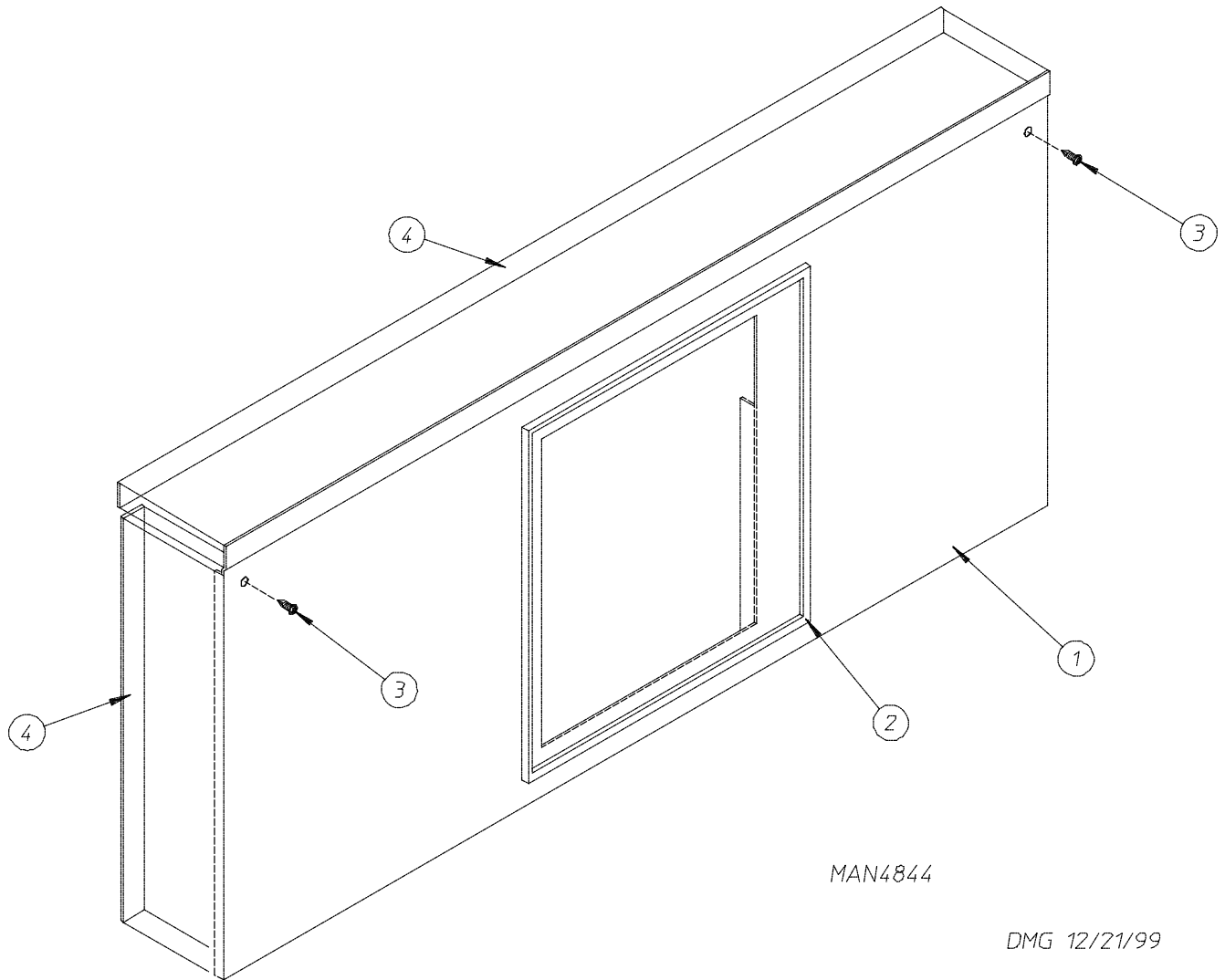
# Phase 7 Rotational Sensor Assembly



MAN6169

DMG 5/8/02

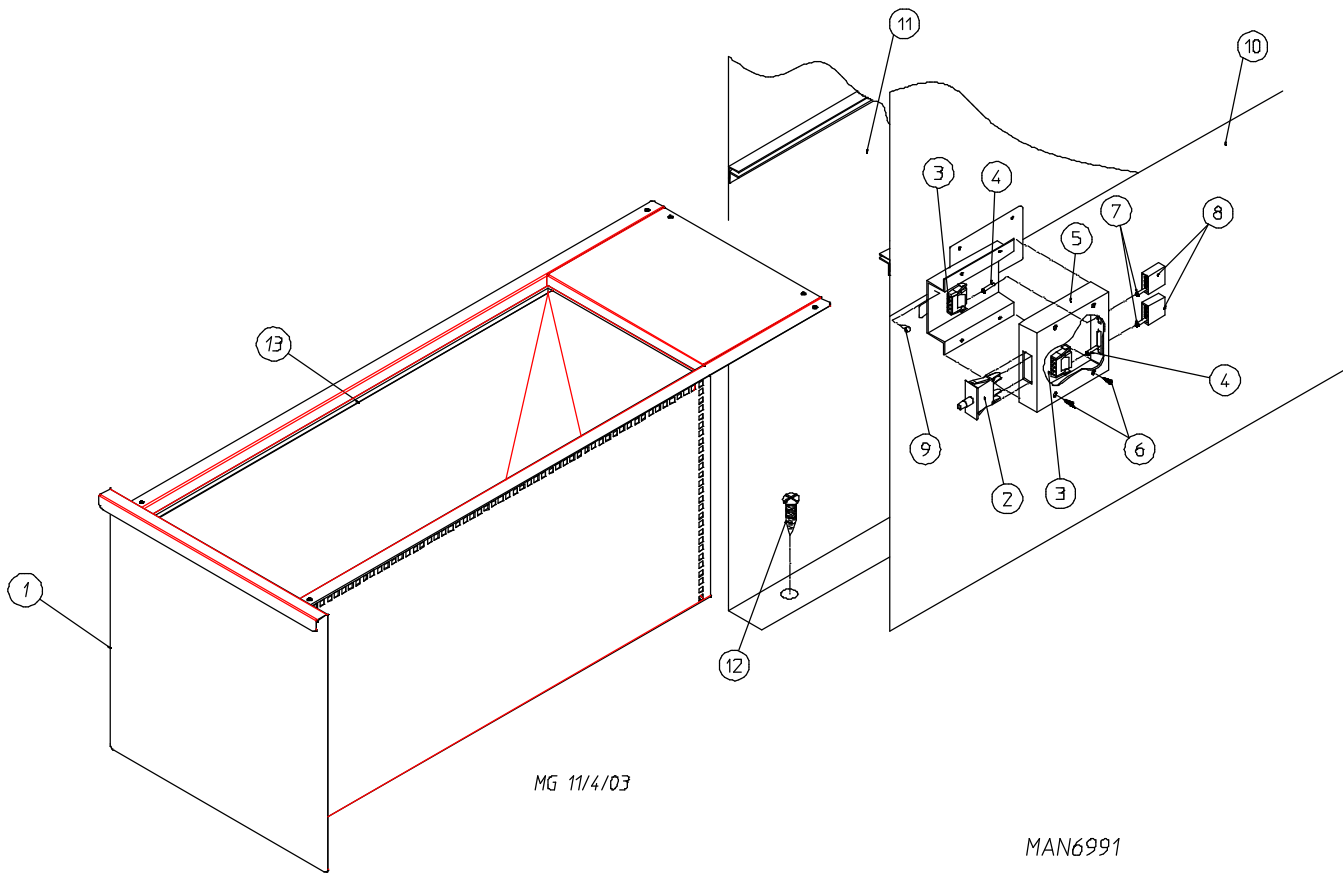
<u>Illus. No.</u>	<u>Part No.</u>	<u>Qty.</u>	<u>Description</u>
1	819064	1	Tumbler Shaft Support Assembly Complete (includes illus. nos. 1 through 8)
	835339	1	Tumbler Shaft Support Bracket
2	102394	2	Tumbler Friction Pad
3	153005	6	3/8" Lock Washer
4	150619	2	3/8-16 x 1" Tap Bolt
5	153004	8	3/8" Flat Washer
6	180018	2	4" x 1-1/2" Hi-Impact Wheel
7	819046	1	Tumbler Adjustment Plate
8	819065	1	Tumbler Shoulder Screw
9	822735	1	Phase 7 Rotational Sensor Assembly
10	152005	4	3/8-16 Hex Nut
11	323433	2	Rear Wheel Shim



<u>Illus. No.</u>	<u>Part No.</u>	<u>Qty.</u>	<u>Description</u>
1	882497	1	White Lint Door Assembly (includes illus. nos. 1, 2, and 4)
	882498	1	Coral Wrinkle Blue Lint Door Assembly (includes illus. nos. 1, 2, and 4)
2	117607	6	1/4" x 3/8" Poron Foam (sold by the foot)
3	150309	5	#10-16 x 1/2" Hex Head TEK Crimptite Screw
4	117604	9	Neoprene Sponge Tape (sold by the foot)

# Lint Drawer/Lint Drawer Switch Box Assemblies

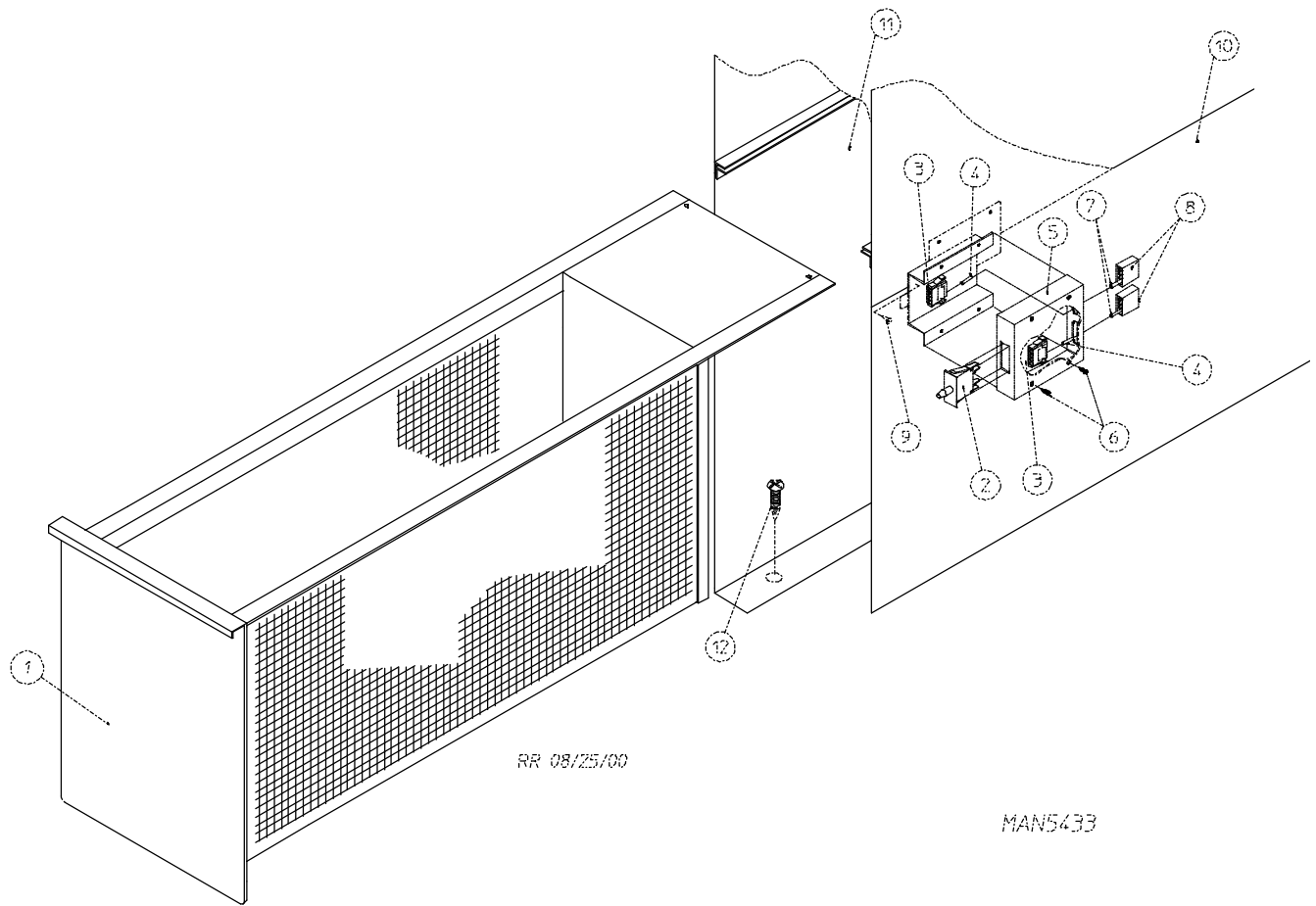
For Models Mfd. as of February 1, 2003



<u>Illus. No.</u>	<u>Part No.</u>	<u>Qty.</u>	<u>Description</u>
1	884069	1	White Lint Drawer/Screen Assembly
	884068	1	Coral Wrinkle Blue Lint Drawer/Screen Assembly
2	122116	1	Lint Drawer Switch Only
3	122605	1	4-Pin Socket Connector
4	122701	2	Socket Terminal Only
	122801	1	Pin/Socket Extraction Tool...Not Illustrated
5	882507	1	Lint Drawer Switch Box Assembly Complete (includes illus. nos. 3 through 6)
6	150301	4	#8-18 x 7/16" Phillips Pan Head TEK Screw
7	122700	2	Pin Terminal Only
8	122604	1	4-Pin Connector
9	150301	2	#8-18 x 7/16" Phillips Pan Head TEK Screw
10	319076	1	Right Hand Divider Panel
11	319077	1	Left Hand Divider Panel
12	150301	14	#8-18 x 7/16" Phillips Pan Head TEK Screw
13	108220	1	Lint Bag

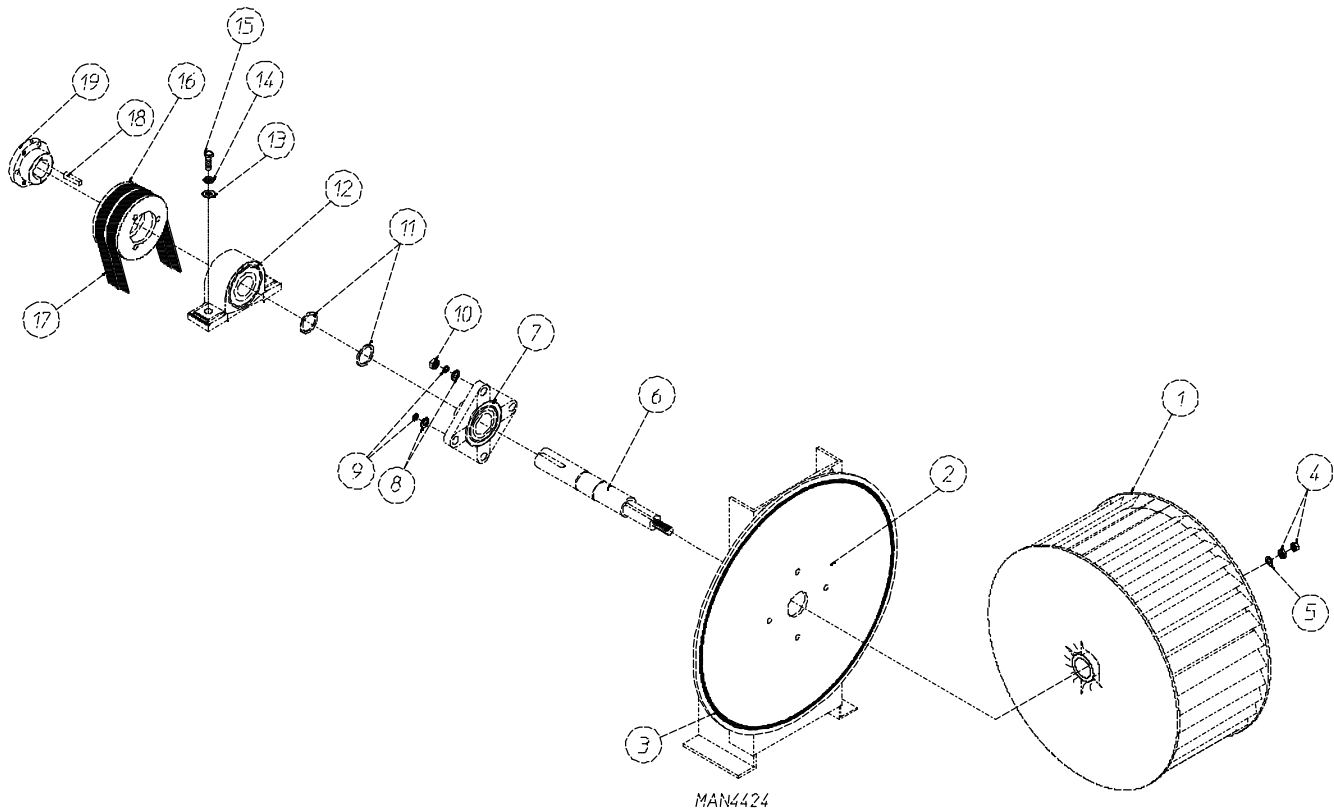
# Lint Drawer/Lint Drawer Switch Box Assemblies

For Models Mfd. prior to February 1, 2003



<u>Illus. No.</u>	<u>Part No.</u>	<u>Qty.</u>	<u>Description</u>
1	882792	1	White Lint Drawer/Screen Assembly
	882793	1	Coral Wrinkle Blue Lint Drawer/Screen Assembly
2	122116	1	Lint Drawer Switch Only
3	122605	1	4-Pin Socket Connector
4	122701	2	Socket Terminal Only
	122801	1	Pin/Socket Extraction Tool...Not Illustrated
5	882507	1	Lint Drawer Switch Box Assembly Complete (includes illus. nos. 3 through 6)
6	150301	4	#8-18 x 7/16" Phillips Pan Head TEK Screw
7	122700	2	Pin Terminal Only
8	122604	1	4-Pin Connector
9	150301	2	#8-18 x 7/16" Phillips Pan Head TEK Screw
10	319076	1	Right Hand Divider Panel
11	319077	1	Left Hand Divider Panel
12	150301	14	#8-18 x 7/16" Phillips Pan Head TEK Screw

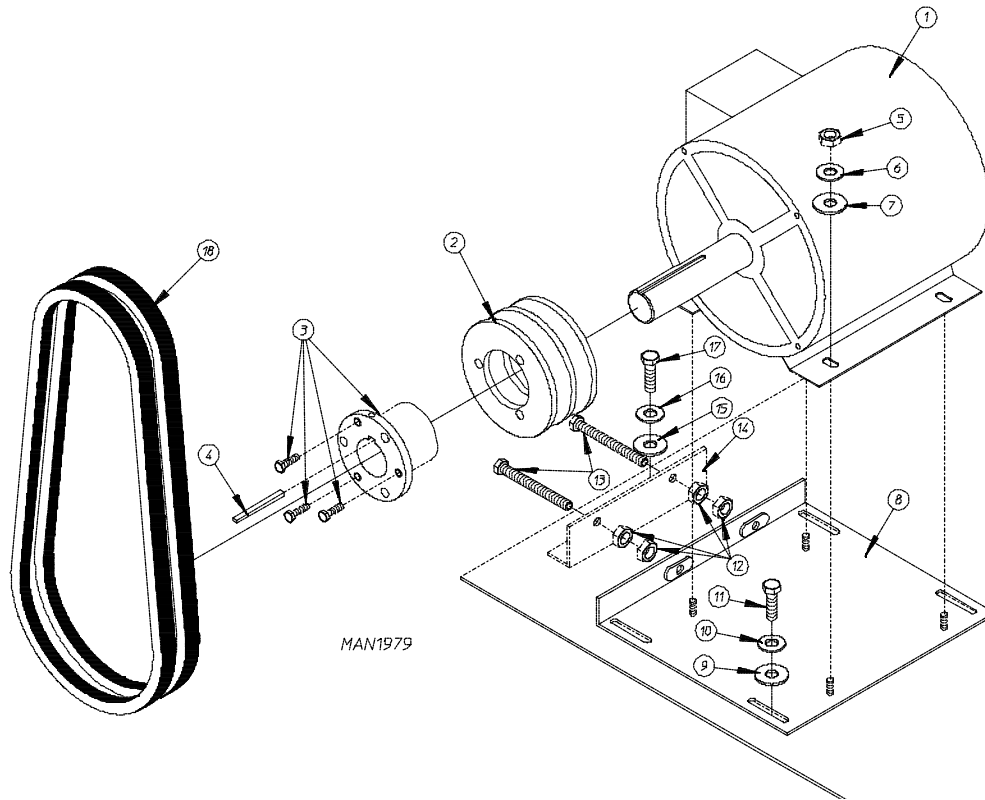
# Fan (Squirrel Cage) Shaft Mount Assembly



<u>Illus. No.</u>	<u>Part No.</u>	<u>Qty.</u>	<u>Description</u>
1	100612	1	1-1/4" Bore x 15" Diameter x 6" Blower/Fan (squirrel cage)
2	821078	1	Fan Shaft Mount Assembly Complete (includes illus. nos. 1 through 16, 18, and 19)
	821073	1	Fan Shaft Mount Only
3	117604	4'	Neoprene Sponge Tape (sold by the foot)
4	152006	2	1/2-20 Left Hand Jam Nut
5	153065	1	1/2" Flat Washer
6	332280	1	Fan Shaft Only
7	881061	1	1-3/8" Flange Bearing with Setscrews and Grease Fitting
8	153004	4	3/8" Flat Washer
9	153005	4	3/8" Lock Washer
10	152005	4	3/8-16 Hex Nut
11	100812	2	1-3/8" Retaining Ring
12	880879	1	1-3/8" Pillow Block Bearing Only
13	153004	2	3/8" Flat Washer
14	153005	2	3/8" Lock Washer
15	150617	2	3/8-16 x 1" Hex Head Bolt
16	101177	1	2B x 5.8 Pulley (for gas models Only)
17*	100184	2	BX-63 Cogged Belt (fan shaft to blower motor) for 60 Hz Models Only
18	100706	1	5/16" x 5/16" x 1-3/8" Key
19	101194	1	SDS x 1-3/8" Bushing with Setscrew

\* Replace in matched sets (both belts).

# Blower Motor Mount Assembly

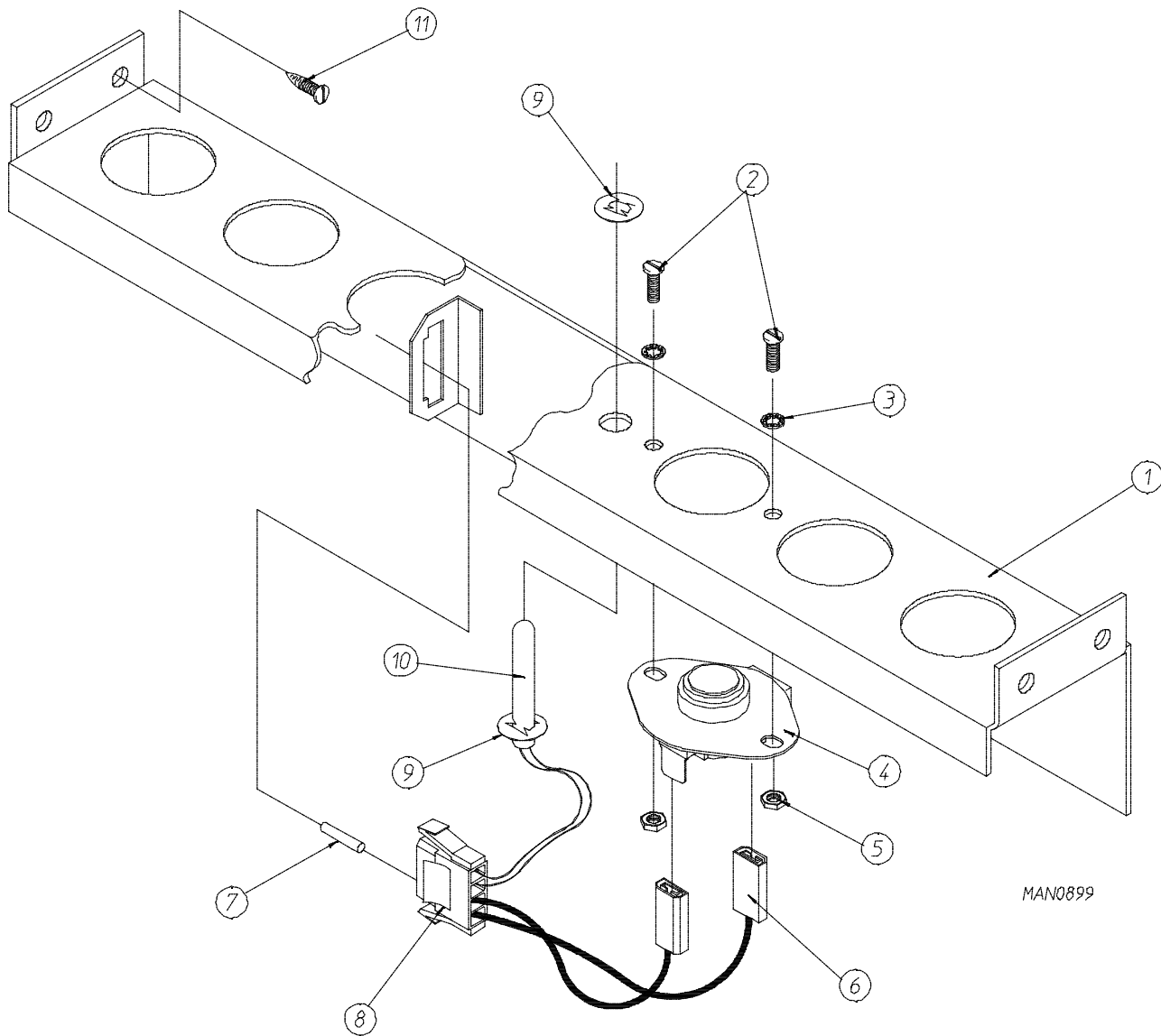


<u>Illus. No.</u>	<u>Part No.</u>	<u>Qty.</u>	<u>Description</u>
1	181030*	1	7.5 hp 208-230/460v 3-Phase (3 $\phi$ ) 60 Hz Motor Only
	181031*	1	7.5 hp 200-230/380-410v 3-Phase (3 $\phi$ ) 50 Hz Motor Only
	181039	1	7.5 hp 575v 3-Phase (3 $\phi$ ) 60 Hz Motor Only
2	101148	1	SB x 4.0 Motor Pulley (60 Hz gas)
	101147	1	SB x 4.8 Motor Pulley (50 Hz steam)
	101195	1	2B x 4.4 Sheave (60 Hz steam / 50 Hz gas)
3	101152	1	SH x 1-3/8" Bushing (50/60 Hz gas / 60 Hz steam)
	101194	1	SDS x 1-3/8" Bushing (50 Hz steam)
4	100706	1	5/16" x 5/16" x 1-3/8" Key
5	152004	4	5/16-18 Hex Nut
6	153002	4	5/16" Lock Washer
7	153001	4	5/16" Flat Washer
8	821091	1	Motor Mount Adjustment Plate Only
9	153001	4	5/16" Flat Washer
10	153002	4	5/16" Lock Washer
11	150501	4	5/16-18 x 3/4" Hex Head Machine Bolt
12	152004	4	5/16-18 Hex Nut
13	150503	2	5/16-18 x 2" Hex Head Machine Bolt
14	332322	1	Motor Mount Adjustment Angle Only
15	153001	2	5/16" Flat Washer
16	153002	2	5/16" Lock Washer
17	150501	2	5/16-18 x 3/4" Hex Head Machine Bolt
18**	100184	2	BX-63 Cogged Belt (matched sets) 60 Hz
**	100195	2	BX-73 Cogged Belt (matched sets) 50 Hz
**	100159	2	BX-61 Cogged Belt (matched sets) 575v 60 Hz Only

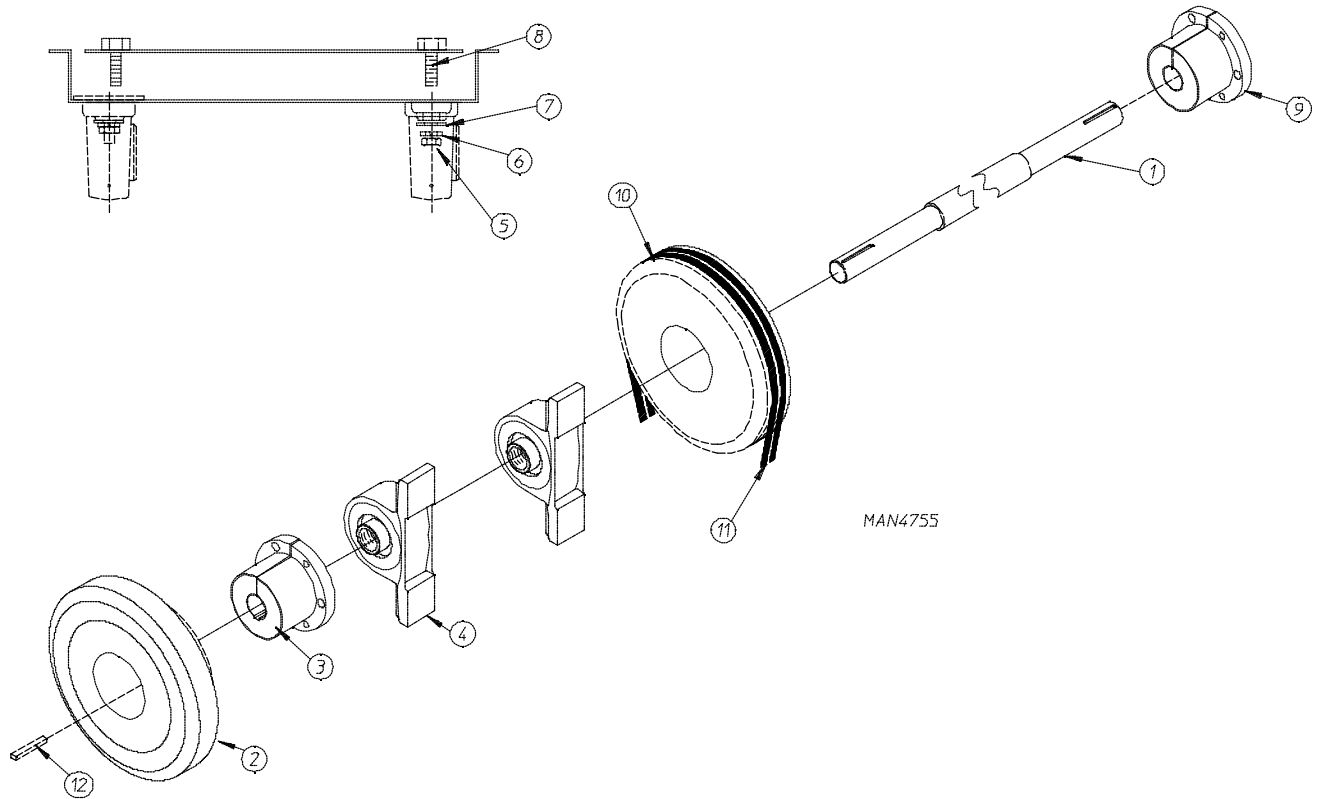
\* Specify voltage when ordering.

\*\* Replace in matched sets (both belts).

# Microprocessor Temperature Sensor Bracket Assembly



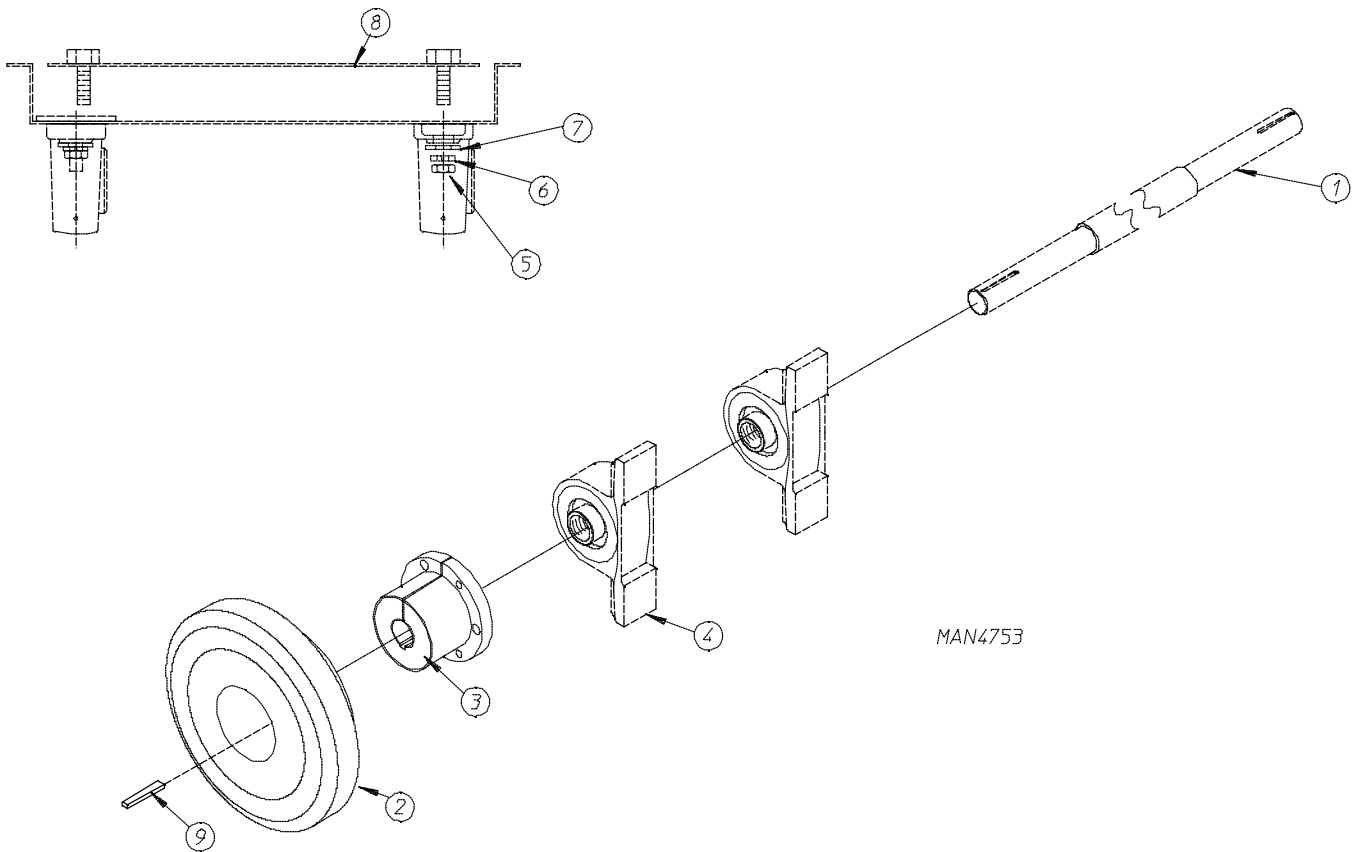
<u>Illus. No.</u>	<u>Part No.</u>	<u>Qty.</u>	<u>Description</u>
1	815931	1	Microprocessor Temperature Sensor Bracket Complete (includes illus. nos. 1 through 10)
	820967	1	Microprocessor Temperature Sensor Bracket Only
2	150005	2	#6-32 x 1/4" Phillips Round Head Machine Screw
3	153010	2	#6 Star Washer
4	130103	1	225° Manual Reset Thermostat Only
5	152000	2	#6-32 Hex Nut
6	121028	2	1/4" x .032 Insulated Terminal
7	122701	4	Socket Terminal Only
	122801	1	Pin/Socket Extraction Tool...Not Illustrated
8	122605	1	4-Pin Socket Connector
9	154007	2	1/4" Push On Fastener
10	815961	1	1/4" Temperature Sensor Probe Assembly (includes illus. nos. 6 through 10)
11	150301	4	#8-18 x 7/16" Phillips Pan Head TEK Screw



<u>Illus. No.</u>	<u>Part No.</u>	<u>Qty.</u>	<u>Description</u>
1	882460	1	Tumbler Shaft Assembly (includes illus. nos. 1 and 4)
2	821465	1	11" Drive Wheel
3	101234	1	Drive with Hub Taper Bushing
4	880779	2	1-3/8" Pillow Block Bearing
5	152011	4	3/8-18 Hex Nut
6	153005	4	3/8" Lock Washer
7	153004	4	3/8" Flat Washer
8	835360	2	Bearing Backing Plate Assembly
9	101184	1	1-3/8" Bushing with Setscrew
10	101189	1	2B x 8.0 Pulley
11*	100140	2	BX-38 Cogged Belt
12	100717	1	5/16" x 5/16" x 2-3/4" Key

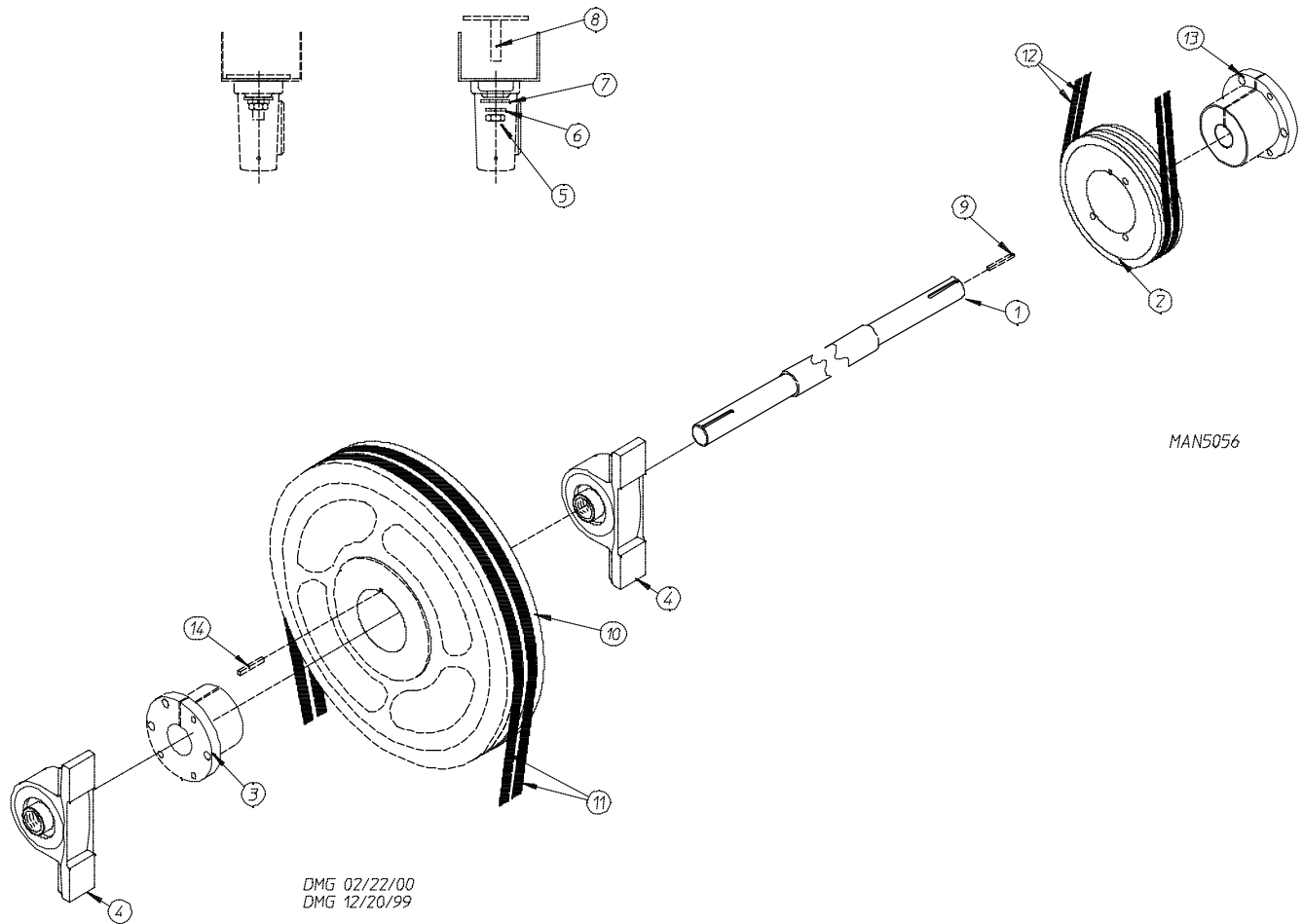
\* Replace in matched sets (both belts).

# Idler Shaft Assembly



<u>Illus. No.</u>	<u>Part No.</u>	<u>Qty.</u>	<u>Description</u>
1	882460	1	Idler Shaft Assembly (includes illus. nos. 1 and 4)
2	821465	1	11" Drive Wheel
3	101234	1	1-3/8" Taper Lock Bushing
4	880779	2	1-3/8" Pillow Block Bearing
5	152011	4	3/8-18 Hex Nut
6	153005	4	3/8" Lock Washer
7	153004	4	3/8" Flat Washer
8	835360	2	Bearing Backing Plate Assembly
9	100717	1	5/16" x 5/16" x 2-3/4" Long Key

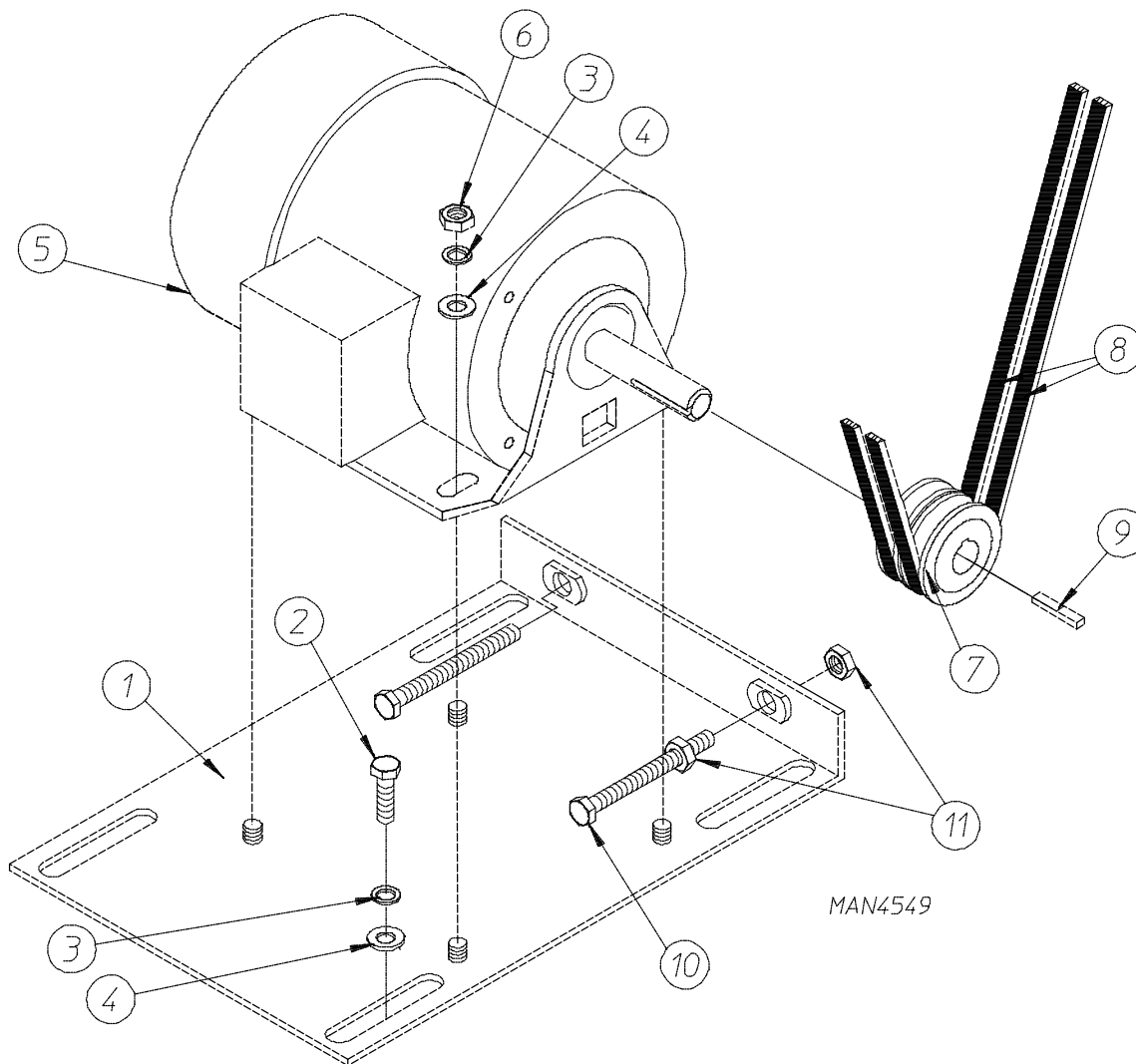
# Speed Reducer Shaft Assembly



<u>Illus. No.</u>	<u>Part No.</u>	<u>Qty.</u>	<u>Description</u>
1	882505	1	Speed Reducing Shaft Assembly (includes illus. nos. 1, 3, 4, and 10)
2	101160	1	2B x 3.4 SH Sheave (for models mfd. as of March 6, 2000)
	101187	1	2B x 4.0" Pulley (for models mfd. prior to March 6, 2000)
3	101150	1	1-3/8" Bushing with Setscrew
4	880779	2	1-3/8" Pillow Block Bearing
5	152005	4	3/8-16 Hex Nut
6	153005	4	3/8" Lock Washer
7	153004	4	3/8" Flat Washer
8	835361	2	Bearing Back Up Plate
9	100717	1	5/16" x 5/16" x 2-3/4" Long Key
10	101193	1	2B x 13.6" SK Sheave
11*	100124	2	BX-53 Belt
12*	100140	2	BX-38 Cogged Belt
13	101152	1	SH x 1-3/8" Bushing (60 Hz) (includes illus. no. 9)
14	100717	1	5/16" x 5/16" x 2-3/4" Key

\* Replace in matched sets (both belts).

# Totally Enclosed, Non-Venting Drive Motor Assembly

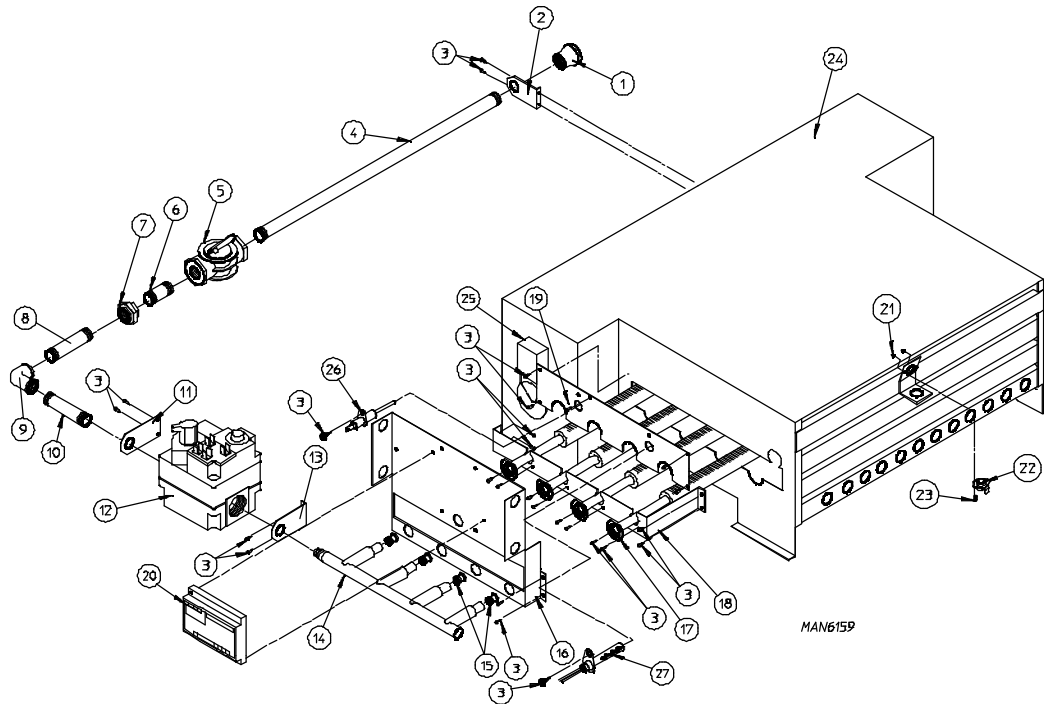


<u>Illus. No.</u>	<u>Part No.</u>	<u>Qty.</u>	<u>Description</u>
1	835297	1	Motor Adjustment Plate
2	150501	4	5/16-18 x 3/4" Hex Head Machine Bolt
3	153002	8	5/16" Lock Washer
4	153001	8	5/16" Flat Washer
5	882078	1	3 hp 208-230/380/416/460v 3-Phase (3 $\phi$ ) 50/60 Hz Totally Enclosed, Non-Venting Motor
	181019	1	3 hp 575v 3-Phase (3 $\phi$ ) 60 Hz Totally Enclosed, Non-Venting Motor
6	152004	4	5/16" Hex Nut
7	101235	1	1-1/8" Pulley
8*	100124	2	BX-53 Cogged Belt
9**	—	1	5/16" Key
10	150619	2	3/8-16 x 3" Tap Bolt
11	152005	4	3/8-16 Hex Nut

\* Replace in matched sets (both belts).

\*\* Consult factory.

# CE Hot Surface Ignition Burner Assembly



DMG 4/30/02

<u>Illus. No.</u>	<u>Part No.</u>	<u>Qty.</u>	<u>Description</u>
1	142938	1	1-1/2" B.S.P.T. x 1" N.P.T. Reducing Coupling
2	332117	1	Pipe Bracket
3	150309	25	#10-16 x 1/2" Hex Head TEK Crimptite Screw
4	142817	1	1" x 28-1/2" Black Nipple
5	141302	1	1" Union Shutoff
6	142724	1	1" x 2" Nipple
7	142602	1	1" Union
8	142581	1	1" x 5" Nipple
9	142548	1	1" x 90° Elbow
10	142581	1	1" x 5" Nipple
11	332487	1	Gas Valve Pipe Bracket
12	140028	1	1" x 1" 24 VAC CE Gas Valve
13	332486	1	Gas Valve Pipe Bracket
14	141240	1	4-Port Manifold
15	140839	4	#2 Burner Orifice (natural gas)
	140820	4	#29 Burner Orifice (liquid propane gas)
	883331	1	D170 Liquid Propane Conversion Kit
16	390169	1	4 Tube Burner Hot Surface Ignition Mount Manifold Rest
17	141136	4	Uginox Burner Tube
18	332121	1	Burner Tube Support
19	390170	1	Hot Surface Ignition Burner Box Cover Plate
20	128975	1	CE Hot Surface Ignition Module
21	151000	2	#6-32 Pal Nut
22	130201	1	330° Hi-Limit Manual Reset
23	151001	2	#6-32 x 1/2" Round Head Machine Screw
24	820987	1	Burner Box
25	—	1	Sail Switch Assembly <b>(refer to Sail Switch Assembly on page 24)</b>
26	128921	1	Hot Surface Ignition Flame Sensor
27	881597	1	Hot Surface Ignition Ignitor



# Direct Spark Ignition Burner Assembly

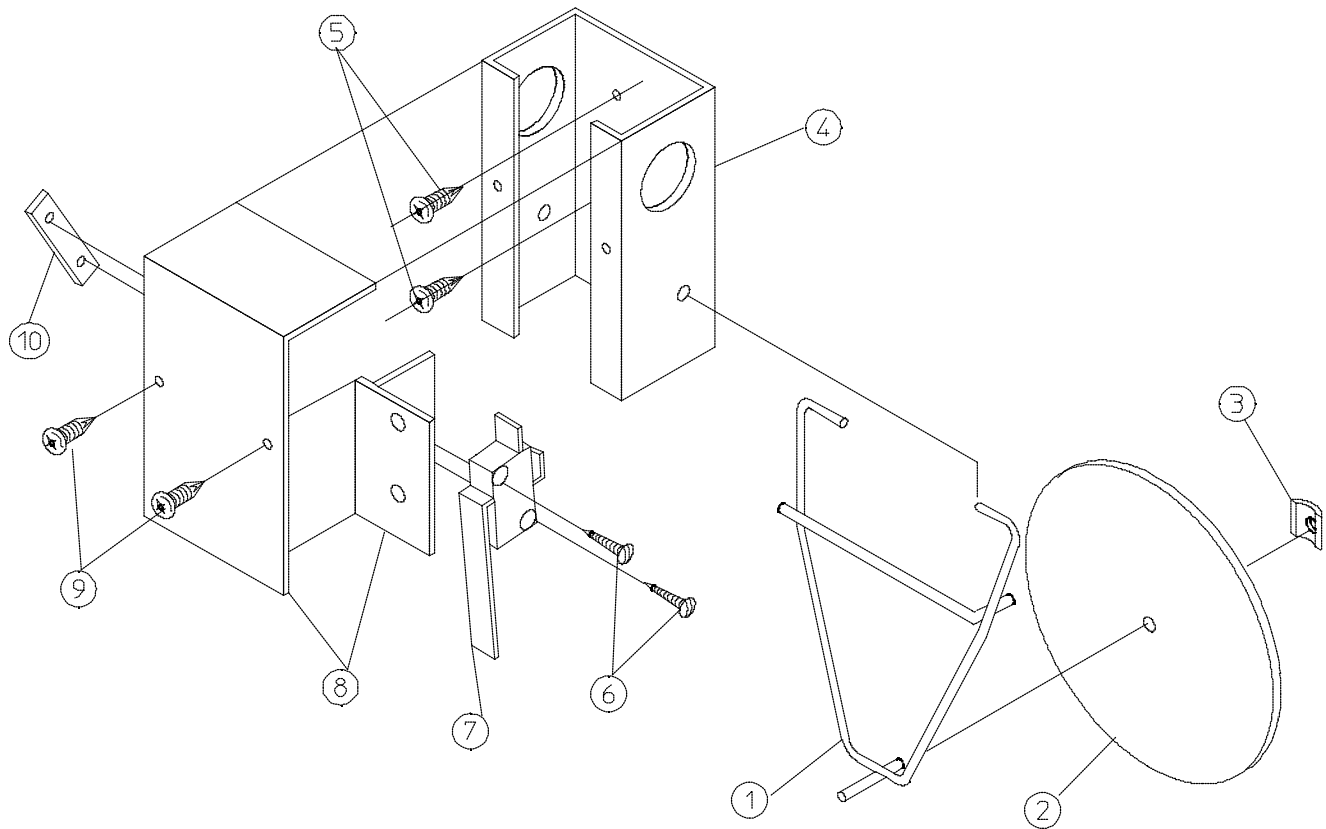
---

<u>Illus. No.</u>	<u>Part No.</u>	<u>Qty.</u>	<u>Description</u>
1	142929	1	1-1/2" x 1" Reducing Coupling
2	332117	1	Pipe Bracket
3	150309	33	#10-16 x 1/2" Hex Head TEK Crimptite Screw
4	142583	1	1" x 40" Nipple
5	128919	1*	High Voltage Ignition Cable with Cap 36"
6	142808	1	1" x 3" Nipple
7	142602	1	1" Union
8	152013	2	#6-32 Hex Nut
9	142507	1	1" x 90° Street Elbow
10	128915	1	Direct Spark Ignition Ignitor
11	332487	1	Gas Pipe Bracket Straight Extended
12	140028	1	1" 24 VAC Redundant Gas Valve (natural gas)
	882945	1	1" 24 VAC Gas Valve (liquid propane gas)
13	332486	1	Gas Pipe Bracket Bent Extended
14	141240	1	4-Port Manifold
15*	140839	4	#2 Burner Orifice (natural gas)
	140820	4	#29 Burner Orifice (liquid propane gas)
16	390169	1	Direct Spark Ignition Mount Manifold Rest
17	141136	4	Uginox Burner Tube
18	332121	1	Burner Tube Support
19	—	1	Sail Switch <b>(refer to Sail Switch Assembly on page 24)</b>
20	332113	1	Burner Box Cover Plate
21	331290	1	Ignitor/Flame-Probe Sight Hole Disc
22	151000	2	#6-32 Pal Nut
23	130201	1	330° Manual Reset Hi-Limit
24	150005	2	#6-32 x 1/4" Phillips Round Head Machine Screw
25	821457	1	Burner Hi-Limit Bracket
26	332256	1	Large Dryer Liquid Propane Burner Baffle (Liquid Propane Models Only)
27	801048	1	Johnson Direct Spark Ignition Module (three tries)
28	153562	2	#6-32 x 3/4" Clinch Stud
29	835037**	1	Burner Assembly (natural gas) Complete Less Orifice
	821960**	1	Burner Assembly (liquid propane gas) Complete Less Orifice
	820987	1	Burner Box
	880743	1	Direct Spark Ignition Liquid Propane Conversion Kit

\* Consult factory for elevations over 2,000 feet.

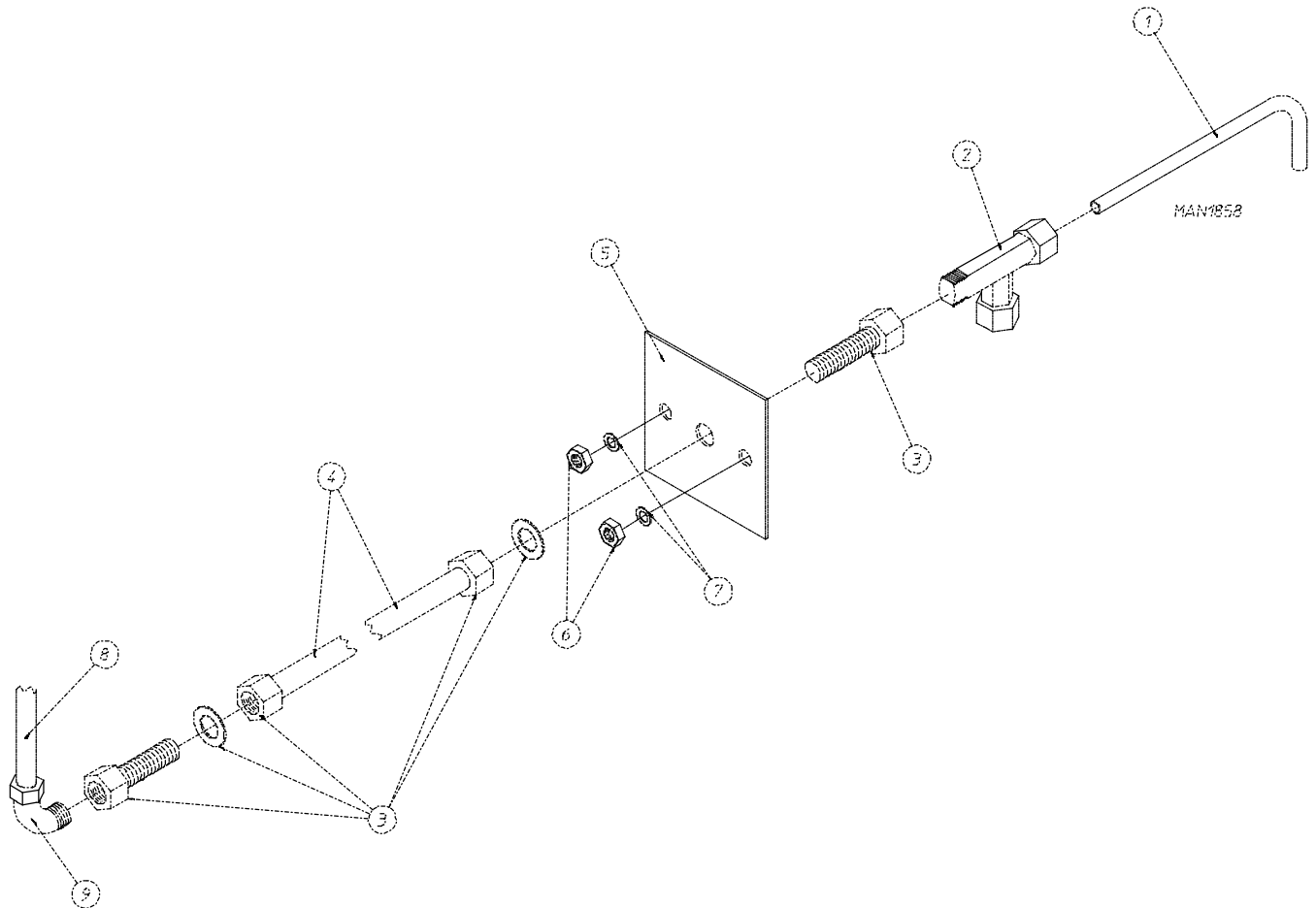
\*\* Orifices are not included and must be ordered separately.

# Sail Switch Assembly



MAN0440

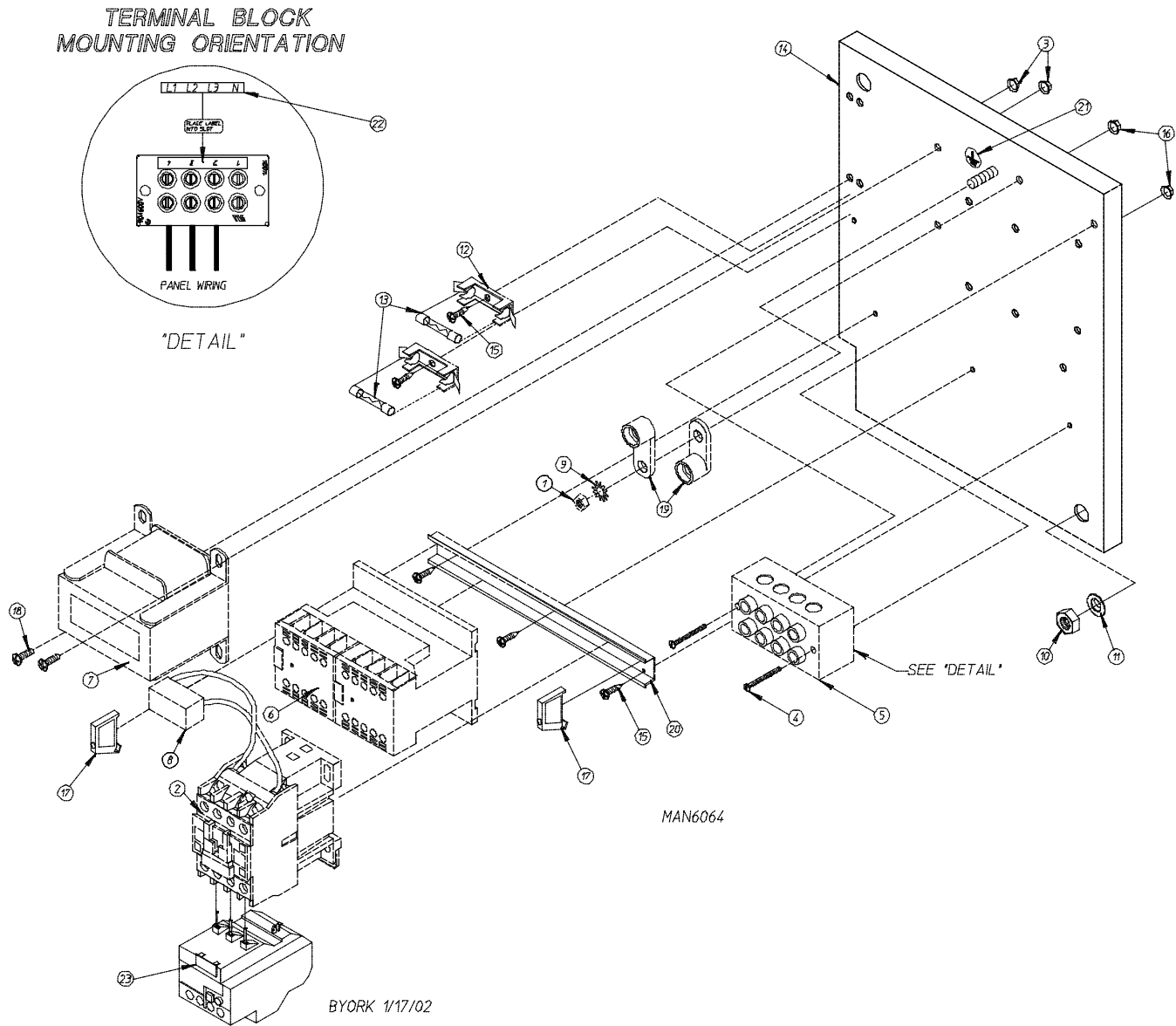
<u>Illus. No.</u>	<u>Part No.</u>	<u>Qty.</u>	<u>Description</u>
1	105500	1	Sail Switch Actuator Rod
2	319202	1	Sail Switch Damper (flat)
3	154002	1	1/8" Push On Fastener
4	802800	1	Sail Switch Box with Cover and Bracket Only
	802801	1	Sail Switch Box Assembly Complete for Microprocessor Controller (computer) Models Only (includes illus. nos. 1 through 4 and 6 through 10)
	882010	1	Sail Switch Box Assembly Complete for Dual Timer Models Only (includes illus. nos. 1 through 4 and 6 through 10)
5	150300	2	#10-16 x 1/2" Hex Washer TEK Screw
6	150303	2	#4 x 3/4" Pan Head "A" Machine Screw
7	122200	1	Sail Switch Only (for microprocessor controller [computer] models Only)
	122404	1	Sail Switch Only (for dual timer models Only)
8	802799	1	Sail Switch Box Cover and Bracket Only
9	150309	2	#10-16 x 1/2" Hex Head TEK Crimptite Screw
10	154004	1	Twin Speed Nut



<u>Illus. No.</u>	<u>Part No.</u>	<u>Qty.</u>	<u>Description</u>
1	332700	1	Air Jet Tube Only
2	143287	1	1/4" x 1/8" M.P.T. Male Run Tee
3	143259	2	1/4" x 1/8" F.P.T. Bulkhead Fitting
4	143100	36"	1/4" Aluminum Tube (sold by the inch)
	821081	1	Air Jet Assembly (includes illus. nos. 1 through 9)
5	332531	1	Air Jet Mounting Plate Only
6	152002	2	1/4-20 Hex Nut
7	153007	2	1/4" Lock Washer
8	143115	6'	1/4" Poly-Flo Tubing (sold by the foot)
9	143149	1	1/4" x 1/8" M.P.T. 90° Elbow

# Microprocessor Reversing Contactor Mounting Panel Assembly

For 208-240V Transformers



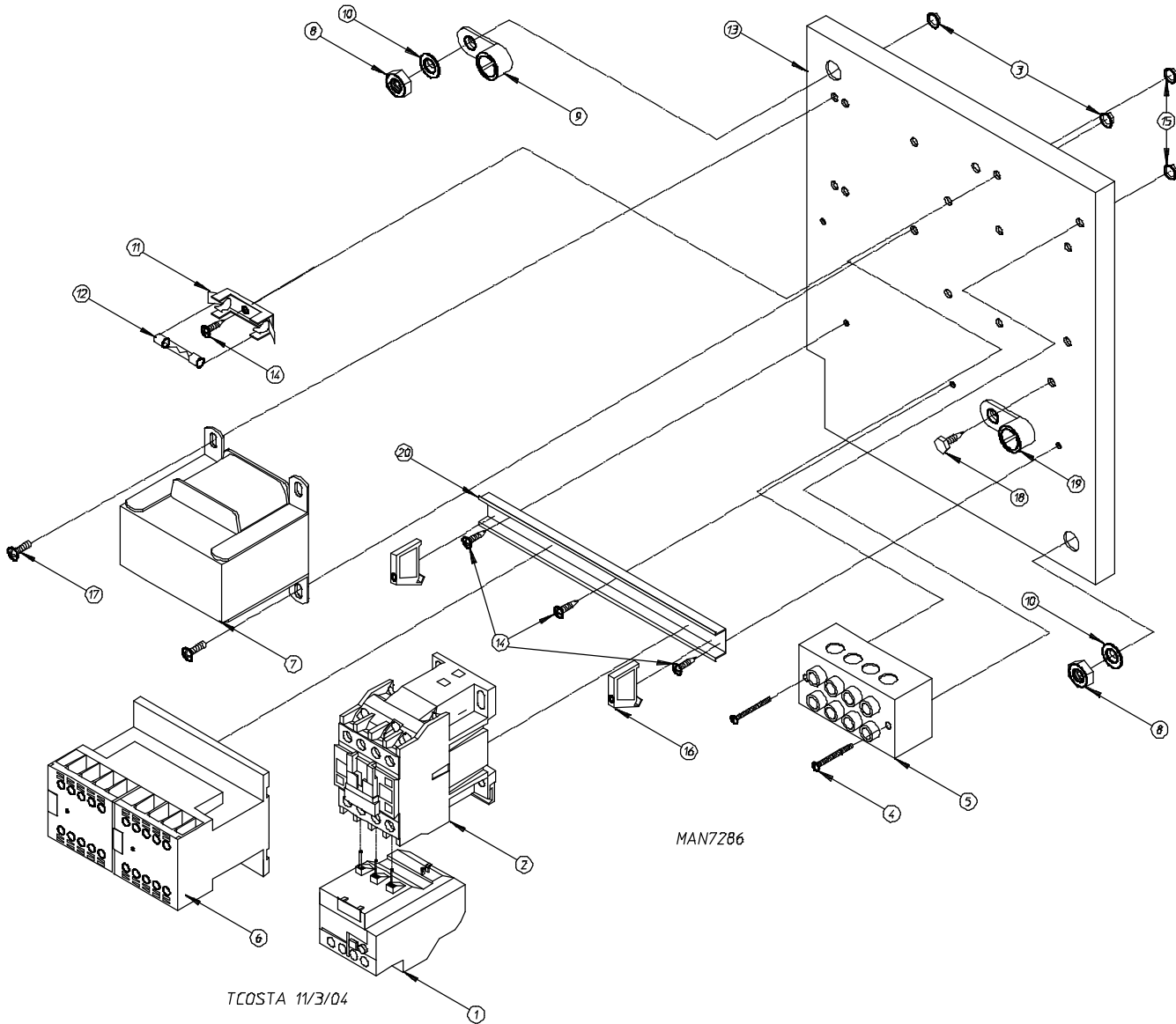
# Microprocessor Reversing Contactor Mounting Panel Assembly

For 208-240V Transformers

<u>Illus. No.</u>	<u>Part No.</u>	<u>Qty.</u>	<u>Description</u>
1	152002	1	1/4-20 Hex Nut
2	132465	1	3 hp Contactor – 24 VAC
3	151001	2	#8-32 Pal Nut
4	150009	2	#6-32 x 1-1/4" Phillips Round Head Machine Screw
5	120701	1	4-Position Power Distribution Block
6	132497	1	Reversing Contactor – 24 VAC
7	822745	1	208-240V Transformer Assembly
8	137015	1	Arc Suppressor Board
9	153021	1	1/4" Exterior/Interior Shake Proof Washer
10	152004	1	5/16-18 Hex Nut
11	153002	1	5/16" Lock Washer
12	136008	2	Fuse Block/Holder
13	136057	2	1/2 amp (Slo-Blo) Fuse
14	332346	1	Contactor/Relay Mounting Panel Only
15	150301	5	#8-18 x 7/16" Phillips Pan Head TEK Screw
16	151000	2	#6-32 Pal Nut
17	120765	2	End Stop/Bracket
18	150108	2	#8-32 x 1/2" Pan Head Machine Screw
19	121010	2	L-70 Ground Lug
20	120768	7-3/4"	Din Mounting Rail (sold by the inch)
21	112075	1	Ground Label
22	112068	1	3-Phase (3Ø) Power Input Label
23	132439	1	Overload
—	825267	1	Contactor Wiring...Not Illustrated
—	829053	1	Relay Panel Wiring...Not Illustrated

# Microprocessor Reversing Contactor Mounting Panel Assembly

For 380-416V Transformers



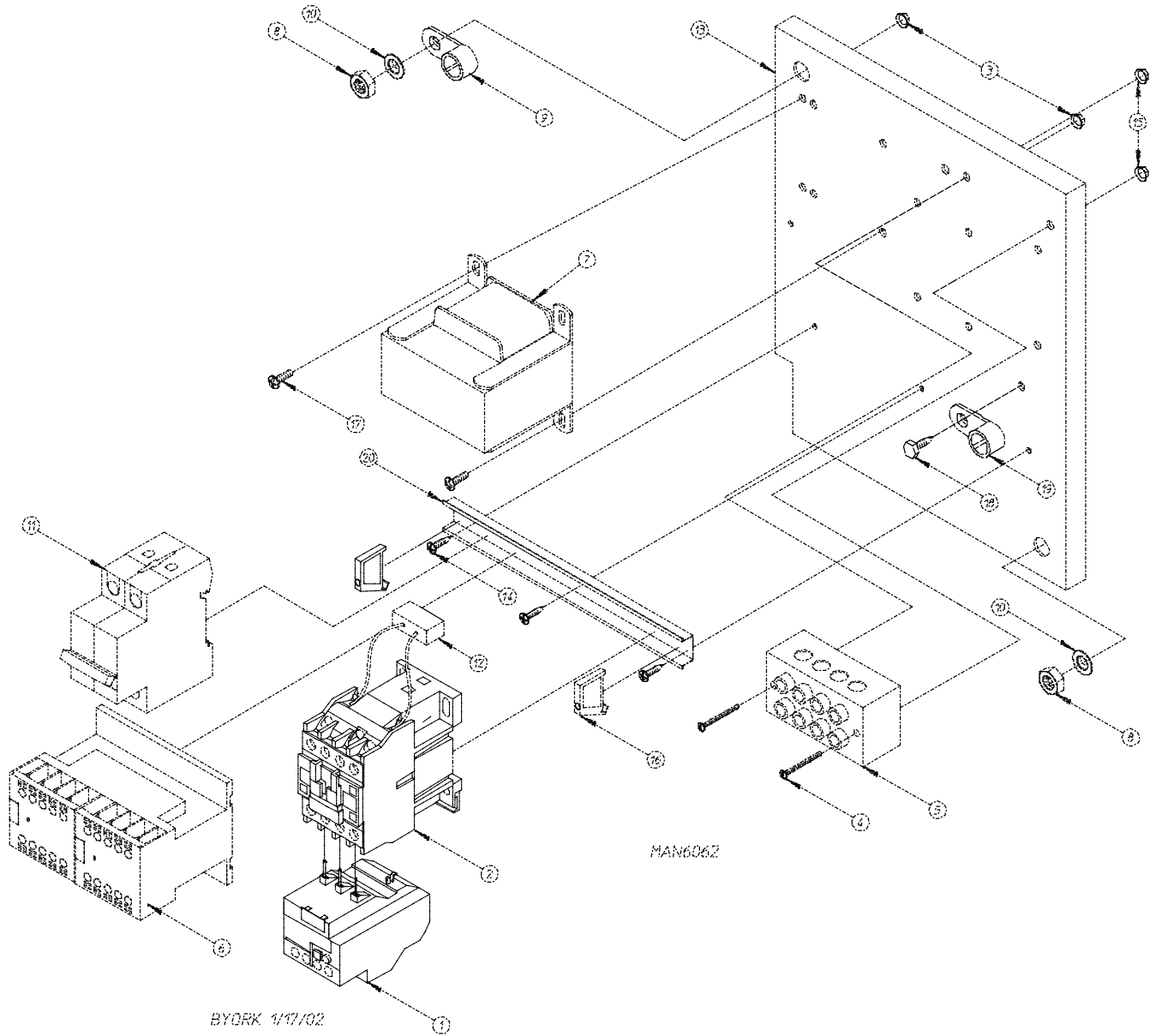
# Microprocessor Reversing Contactor Mounting Panel Assembly

For 380-416V Transformers

<u>Illus. No.</u>	<u>Part No.</u>	<u>Qty.</u>	<u>Description</u>
1	132467	1	9-13 amp Overload
2	132465	1	10 hp Contactor – 24 VAC
3	151001	2	#8-32 Pal Nut
4	150009	2	#6-32 x 1-1/2" Phillips Round Head Machine Screw
5	120701	1	4-Position Power Distribution Block
6	132497	1	"Kline" Reversing Contactor
7	801580	1	Transformer (380-416 Volt / 3-Phase [3Ø])
8	152004	2	5/16-18 Hex Nut
9	121012	1	Ground Lug
10	153002	2	5/16" Lock Washer
11	136008	1	Fuse Block/Holder
12	136057	1	1/2 amp (Slo-Blo) Fuse
13	332346	1	Contactor/Relay Mounting Panel Only
14	150301	4	#8-18 x 7/16" Phillips Pan Head TEK Screw
15	151000	2	#6-32 Pal Nut
16	120765	2	End Stop/Bracket
17	150108	2	#8-32 x 1/2" Pan Head Machine Screw
18	150297	1	#10 x 1/2" Hex Washer TEK Screw
19	121010	1	L-70 Ground Lug
20	120768	7-3/4"	Din Mounting Rail (sold by the inch)
—	830180	1	Relay Panel Wiring...Not Illustrated
—	825267	1	Drive/Blower Motor Contactor Wiring...Not Illustrated

# Microprocessor Reversing Contactor Mounting Panel Assembly

For 460-480V Transformers



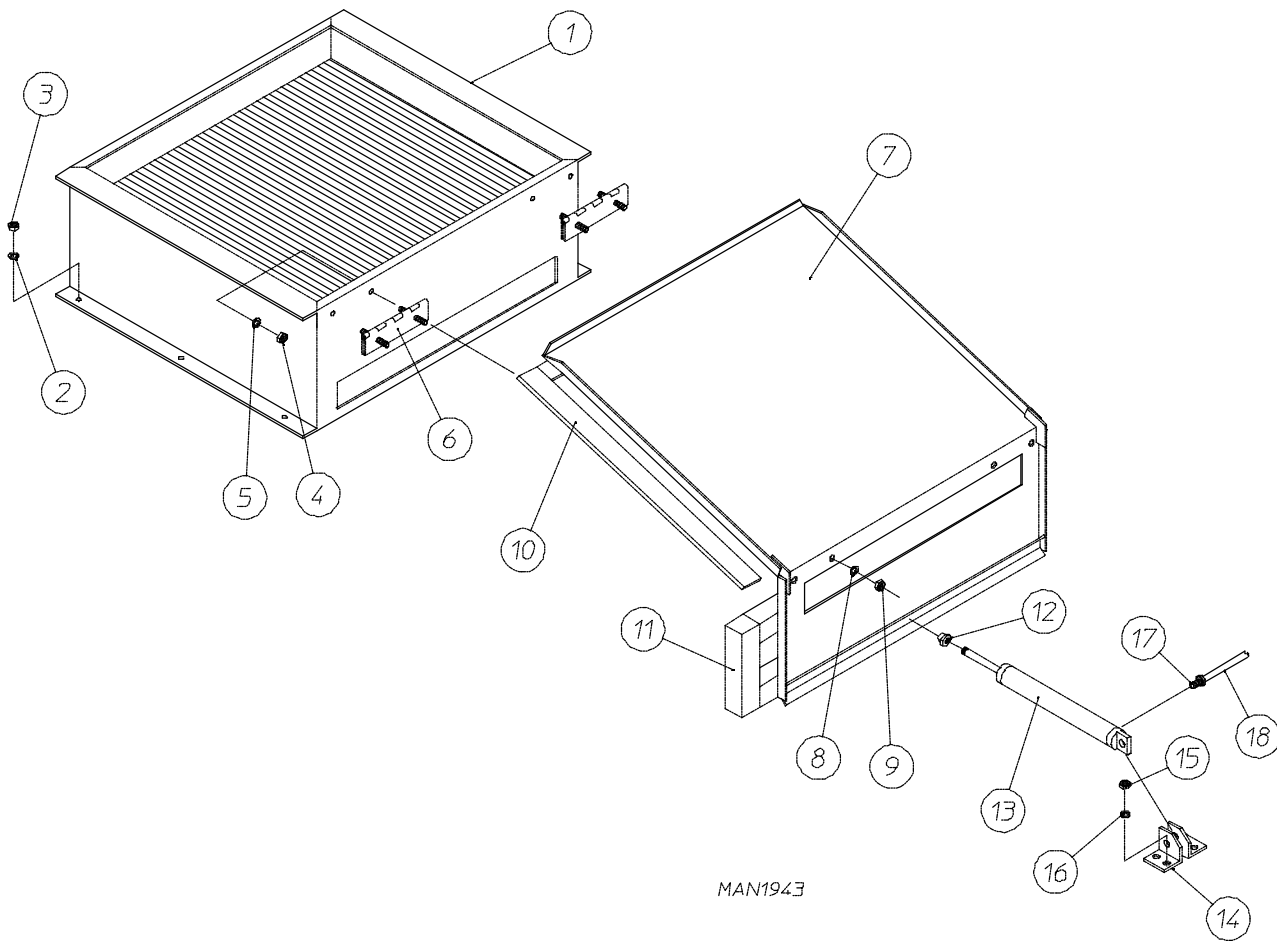
# Microprocessor Reversing Contactor Mounting Panel Assembly

For 460-480V Transformers

<u>Illus. No.</u>	<u>Part No.</u>	<u>Qty.</u>	<u>Description</u>
1	132467	1	9-13 amp Overload
2	132465	1	10 hp Contactor – 24 VAC
3	151001	2	#8-32 Pal Nut
4	150009	2	#6-32 x 1-1/2" Phillips Round Head Machine Screw
5	120701	1	4-Position Terminal Block
6	132497	1	"Kline" Reversing Contactor
7	830193	1	460-480V Transformer Assembly
8	152004	2	5/16-18 Hex Nut
9	121012	1	Ground Lug
10	153002	2	5/16" Lock Washer
11	135501	1	2-Pole 1 amp Circuit Breaker
12	137015	1	Arc Suppressor
13	332346	1	Relay Panel
14	150301	4	#8-18 x 7/16" Phillips Pan Head TEK Screw
15	151000	2	#6-32 Pal Nut
16	120765	2	End Stop/Bracket
17	150108	2	#8-32 x 1/2" Pan Head Machine Screw
18	150297	1	#10 x 1/2" Hex Washer TEK Screw
19	121010	1	L-70 Ground Lug
20	120768	7-3/4"	Din Mounting Rail (sold by the inch)
—	830192	1	Relay Panel Wiring...Not Illustrated
—	825267	1	Drive/Blower Motor Contactor Wiring...Not Illustrated

# Steam Damper Assembly

For Steam Models Only

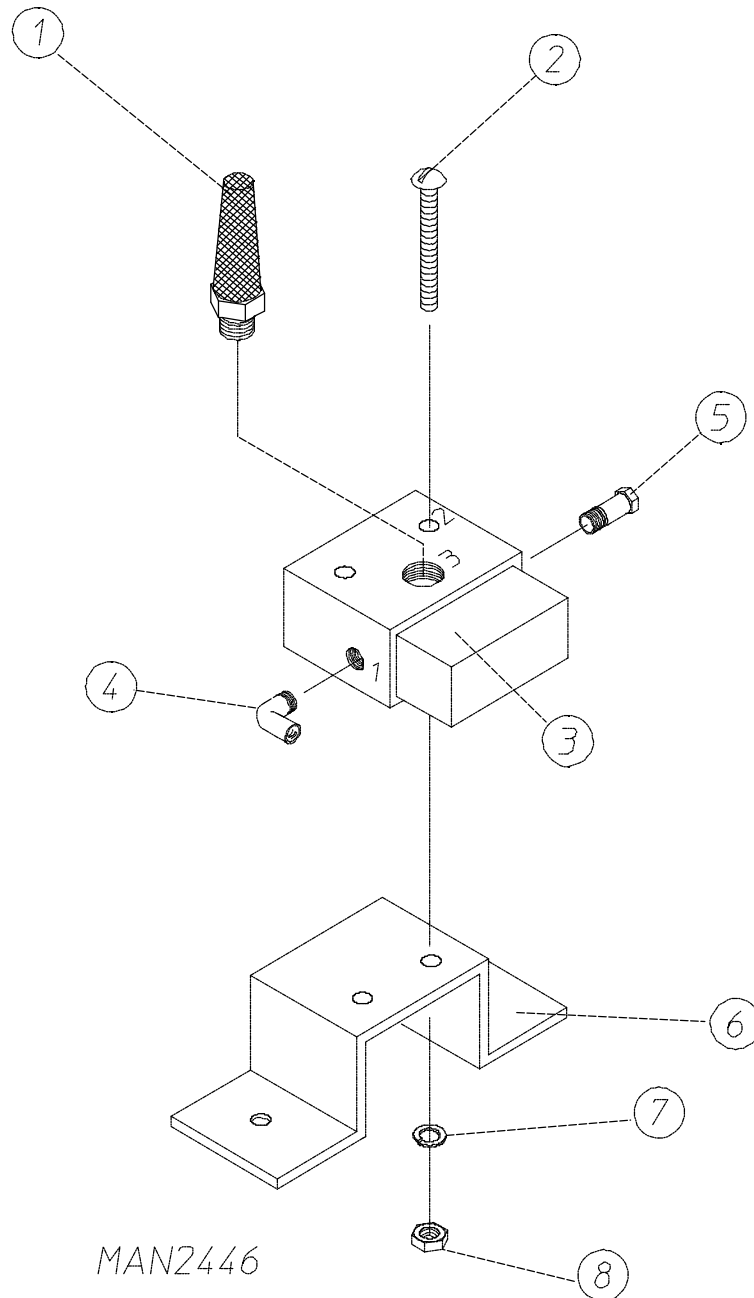


<u>Illus. No.</u>	<u>Part No.</u>	<u>Qty.</u>	<u>Description</u>
1	165017	1	Steam Coil Only
2	153002	6	5/16" Lock Washer
3	152004	6	5/16-18 Hex Nut
4	152002	4	1/4-20 Hex Nut
5	153007	4	1/4" Lock Washer
6	820321	2	Steam Damper Hinge Assembly
7	820994	1	Steam Damper Assembly (includes illus. nos. 7, 10, and 11)
8	153007	4	1/4" Lock Washer
9	152002	4	1/4-20 Hex Nut
10	115995	96"	Steam Damper Gasket (sold by the inch)
11	102350	2	Steam Damper Foam (68-1/2" length)
12	151007	1	7/16-20 Stainless Steel Acorn Nut
13	100499	1	1-1/2" Bore x 3" Stroke Piston
14	100500	1	Piston Support Bracket
15	152002	4	1/4-20 Hex Nut
16	153007	4	1/4" Lock Washer
17	100472	1	1/4" x 1/8" Connector
18	143115	1	1/4" Tubing (sold by the foot)

**(refer to Top Console Assembly on page 35)**

# Pneumatic Valve Assembly

For Gas Models Only

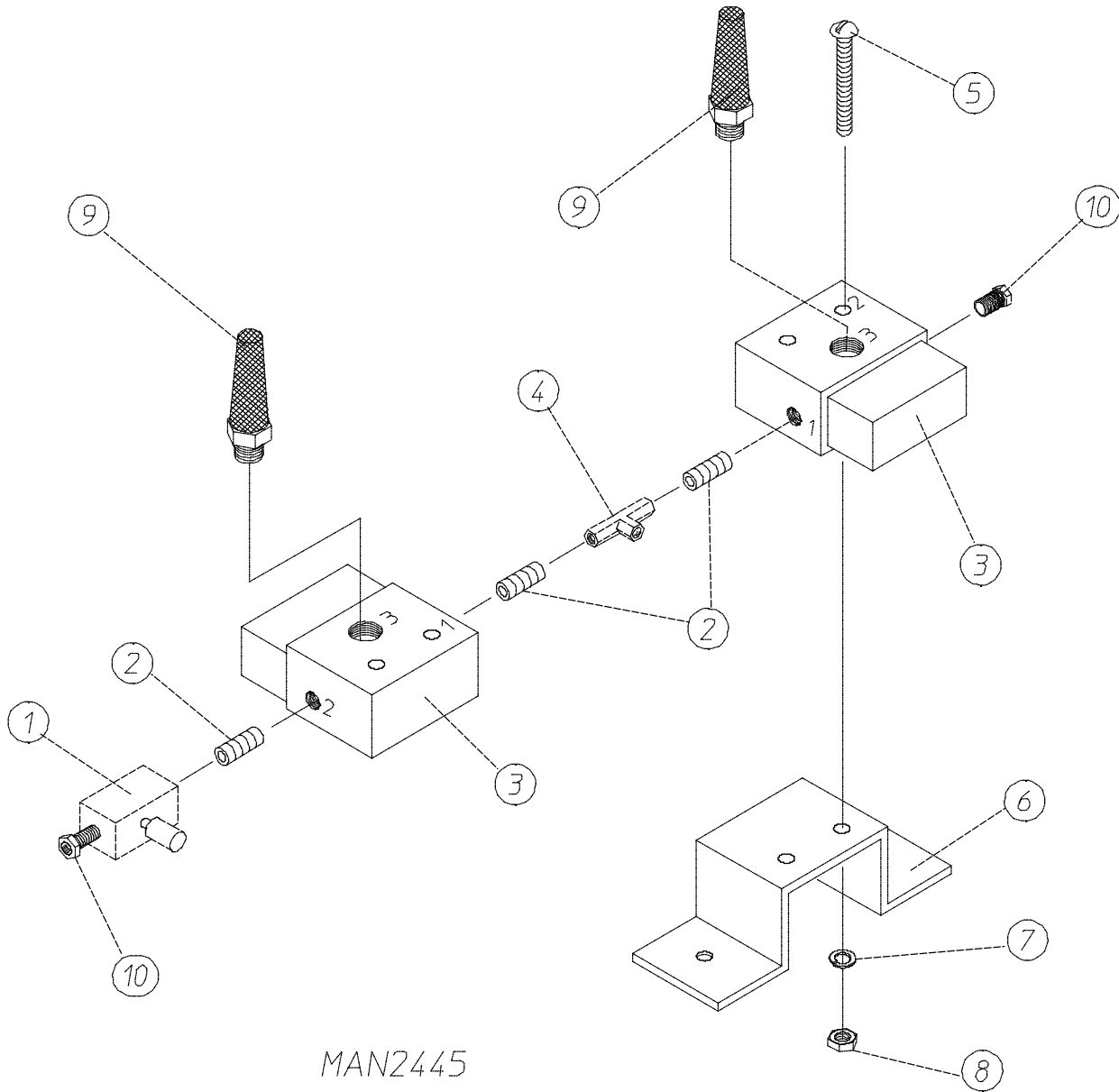


MAN2446

<u>Illus. No.</u>	<u>Part No.</u>	<u>Qty.</u>	<u>Description</u>
1	100520	1	1/8" N.P.T. Silencer (muffler) Only
2	150002	1	#6-32 x 1" Slotted Machine Screw
3	100498	1	3-Way Micro Valve Only – 24 VAC
	821105	1	Pneumatic Valve Assembly Complete (includes illus. nos. 1 through 8)
4	143268	1	1/8" Street Elbow
5	100472	1	1/4" x 1/8" Connector
6	330987	1	Micro Valve Support Bracket Only
7	153010	1	#6 Star Washer
8	152000	1	#6-32 Hex Nut

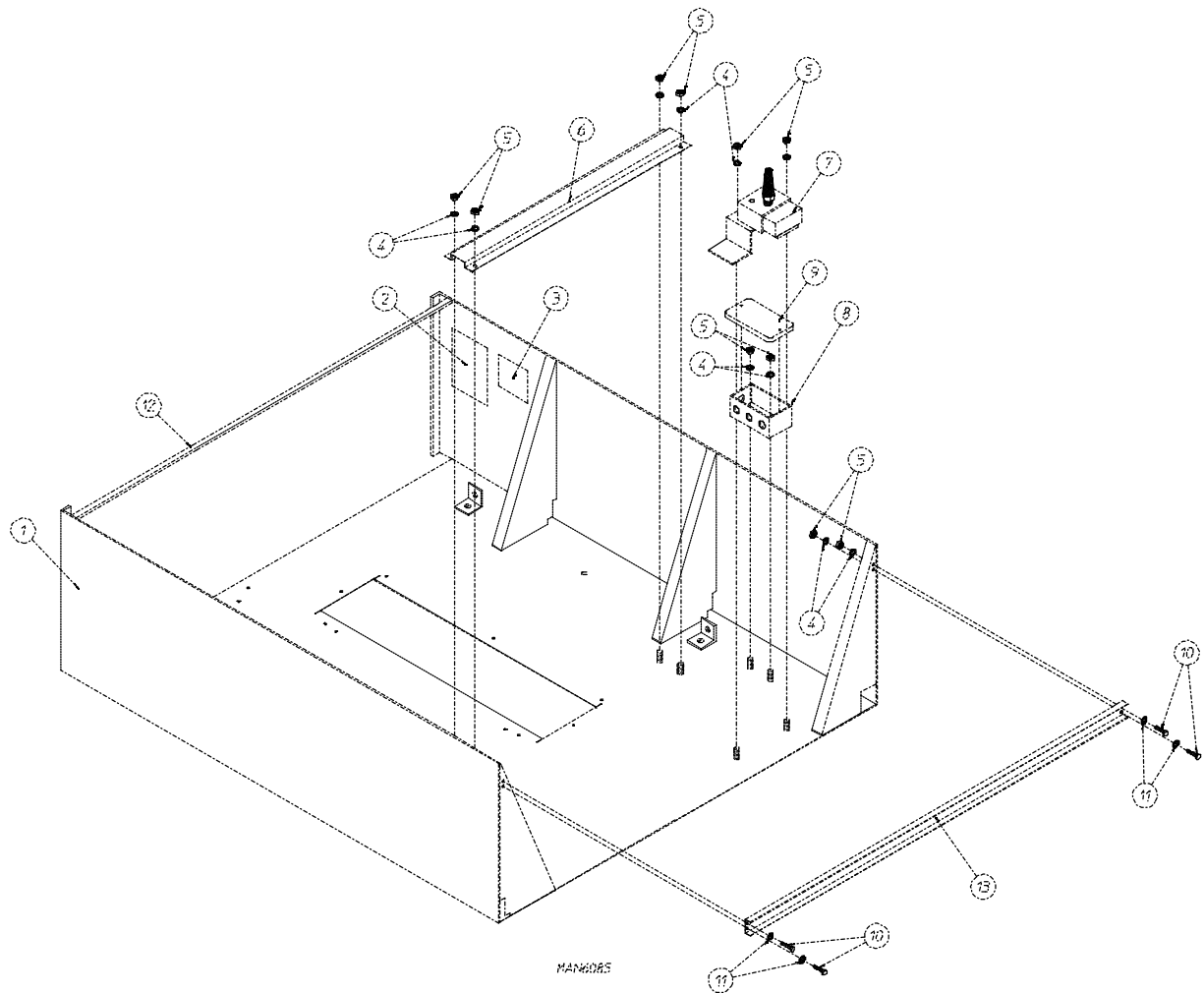
# Pneumatic Valve Assembly

For Steam Models Only



MAN2445

<u>Illus. No.</u>	<u>Part No.</u>	<u>Qty.</u>	<u>Description</u>
1	100496	1	1/8" Needle Valve
2	143238	3	1/8" Close Nipple
3	100498	2	3-Way Micro Valve Only – 24 VAC
	821104	1	Pneumatic Valve Assembly Complete (includes illus. nos. 1 through 8)
4	143223	1	1/8" F.P.T. Brass Tee
5	150002	2	#6-32 x 1" Slotted Machine Screw
6	330987	1	Micro Valve Support Bracket Only
7	153010	2	#6 Star Washer
8	152000	2	#6-32 Hex Nut
9	100520	2	1/8" N.P.T. Silencer (muffler) Only
10	100472	2	1/4" x 1/8" Connector



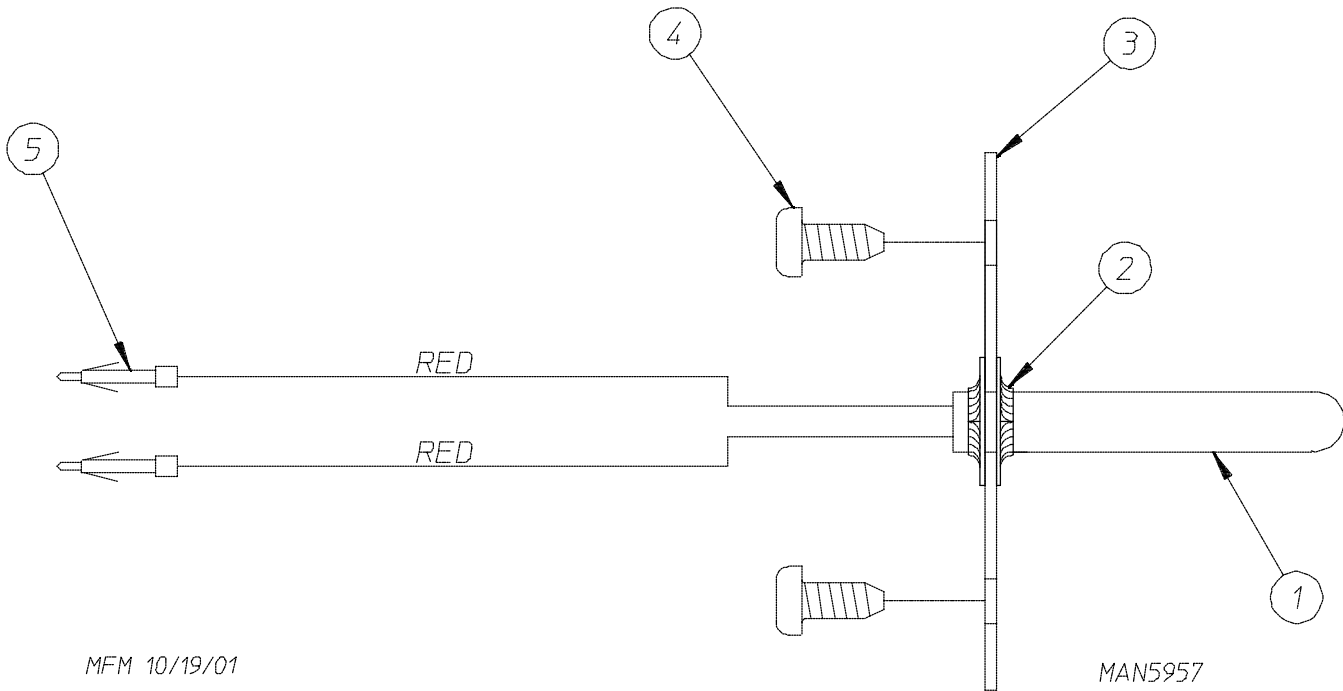
BYORR 2/13/02

<u>Illus. No.</u>	<u>Part No.</u>	<u>Qty.</u>	<u>Description</u>
1	821085*	1	Top Console Assembly Only (for gas models Only)
	821086*	1	Top Console Assembly Only (for steam models Only)
2	114508	1	"Phase 7 Non-Coin Program Location Summary" Label (for microprocessor models Only)
3	_____	1	Dryer Data Label
4	153007	12	1/4" Lock Washer
5	152002	12	1/4-20 Hex Nut
6	332323	1	32" Wire Channel
7	821105	1	Pneumatic Valve Assembly Only (for gas models Only) <b>(refer to Pneumatic Valve Assembly on page 33)</b>
	821104	1	Pneumatic Valve Assembly Only (for steam models Only) <b>(refer to Pneumatic Valve Assembly on page 34)</b>
8	121104	1	2" x 4" Junction Box Only
9	121105	1	Junction Box Cover Only
10	150615	1	1/4-20 x 3/4" Bolt
11	153018	4	1/4" Flat Washer
12	332186	1	Control Door Hinge Channel
13	332132	1	Corner Gusset Brace

\* Specify color when ordering.

# S.A.F.E. Temperature Probe Assembly

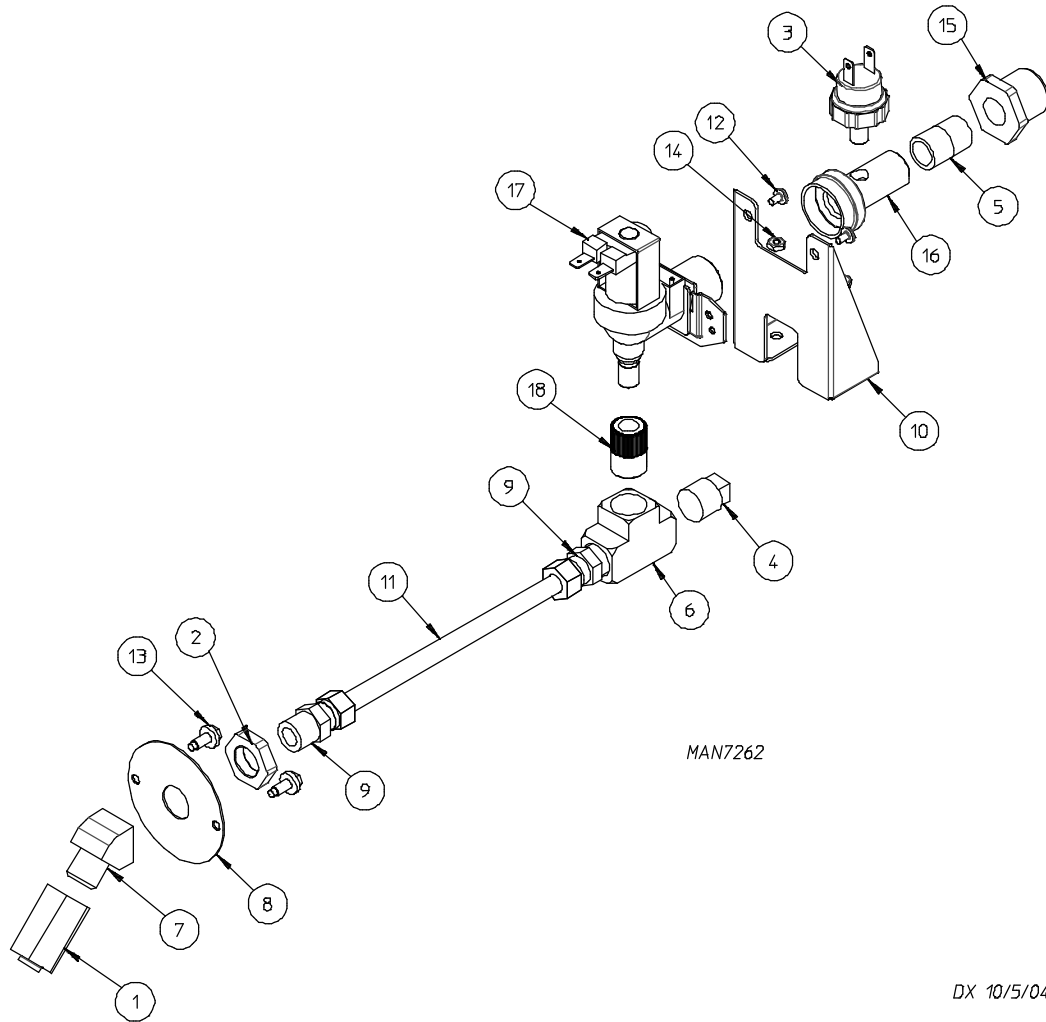
---



<u>Illus. No.</u>	<u>Part No.</u>	<u>Qty.</u>	<u>Description</u>
1	822752	1	Sensor Activated Fire Extinguishing System Temperature Probe Assembly (includes illus. nos. 1 through 5)
2	154007	2	Push On Fastener
3	390390	1	Sensor Bracket Only
4	150301	2	#8-18 Phillips Pan Head TEK Screw
	122647	1	Connector Only...Not Illustrated ( <u>does not</u> include pins)
5	122700	2	Pins

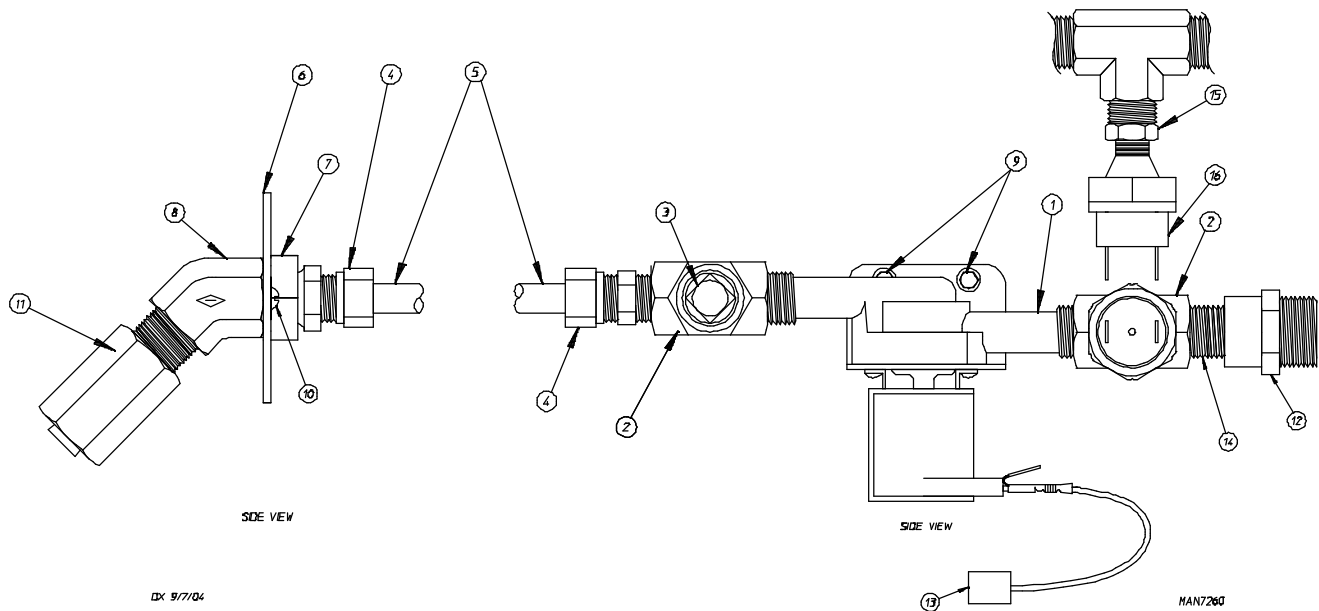
# S.A.F.E. Solenoid Assembly

For Models Mfd. as of September 23, 2004

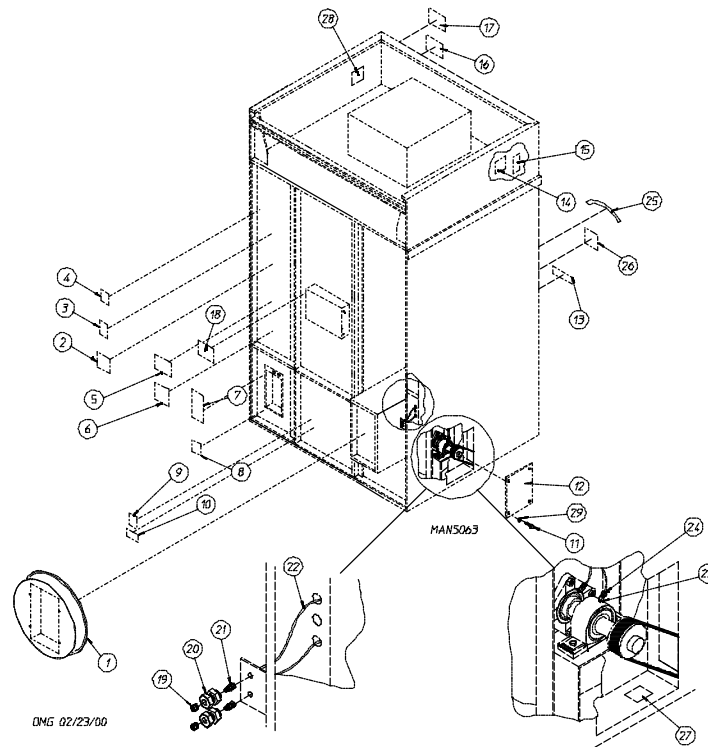


<u>Illus. No.</u>	<u>Part No.</u>	<u>Qty.</u>	<u>Description</u>
1	143581	1	3 GPM 3/8" F.P.T. Spray Nozzle
2	143303	1	3/8" N.P.T. Brass Locknut
3	136987	1	Pressure Switch
4	143251	1	3/8" M.P.T. Brass Plug
5	182579	1	3/8" Hex Nipple
6	143220	1	3/8" F.P.T. Brass Tee
7	143301	1	3/8" Brass 45° Elbow
8	311588	1	Sprinkler Head Mounting Plate
9	143208	2	3/8" Comp x 3/8" M.P.T. Brass Connector
10	311587	1	Valve Bracket
11	143108	1	20" Long Stainless Steel Flexible Tubing
12	154338	2	Machine Screw
13	150309	2	#10-16 x 1/2" Hex Head TEK Crimptite Screw
14	152001	2	#8-32 x 3/8" OD Hex Nut
15	142887	1	Bushing
16	143182	1	3/4" x 1/8" x 3/8" N.P.T. Brass Tee
17	165119	1	Water Inlet Valve
18	143183	1	7/16-20 x 3/8" N.P.T. Brass Adaptor

# S.A.F.E. Solenoid Assembly



<u>Illus. No.</u>	<u>Part No.</u>	<u>Qty.</u>	<u>Description</u>
1	165114	1	Sensor Activated Fire Extinguishing System Solenoid Valve 24 VAC 50/60 Hz
2	143220	2	3/8" F.P.T. Brass Tee
3	143251	1	3/8" M.P.T. Brass Plug
4	143208	2	3/8" Comp x 3/8" M.P.T. Brass Connector
5	143108	1	20" Long Stainless Steel Flexible Tubing
6	311588	1	Sprinkler Head Mounting Plate
7	143303	1	3/8" N.P.T. Brass Locknut
8	143301	1	3/8" Brass 45° Elbow
9	152001	2	#8-32 x 3/8" OD Hex Nut
10	150430	2	#10 x 1/2" Self Drilling Screw
11	143581	1	3 GPM 3/8" F.P.T. Spray Nozzle
12	143025	1	3/8" N.P.T. Nylon Hose Adaptor
13	824081	1	RC Network Assembly
14	143315	1	3/8" x 1/8" Bushing
15	136987	1	Pressure Switch (for models mfd. between December 3, 2003 and September 22, 2004)
16	182579	1	3/8" Hex Nipple (for models mfd. between December 3, 2003 and September 22, 2004)



DMS 02/23/00

<u>Illus. No.</u>	<u>Part No.</u>	<u>Qty.</u>	<u>Description</u>
1	821793	1	Square Duct to 20" Round Duct Transition Piece Assembly with Damper
	821956	1	Square Duct to 20" Round Duct Transition Piece Assembly
2	—	1	Wiring Diagram for Machine (contact factory with model and serial numbers)
3	112046	1	"Computer Ground" Label
4	114005	1	"DANGER – Hot" Label
5	112519	1	"Routine Maintenance" Label
6	114044	1	"High Voltage" Label
7	114007	1	"DANGER – High Voltage" Label
8	112014	1	"High Voltage" Label
9	114008	1	"WARNING – Fumes" Label
10	114001	1	"CAUTION – Exhaust/Lint Screen" Label
11	150512	4	1/4-20 x 1/2" Hex Head Machine Bolt
12	332309	1	Side Access Panel
13	112280	1	"Clean Lint Screen" Label
14	112017	1	"Address" Label (not for resale)
15	—	1	"Serial Number" Label (not for resale)
16	—	1	Wiring Diagram for Machine (contact factory with specific dryer serial number)
17	114508	1	"Phase 7 Program Location" Label
18	114093	1	"Important Manual Reset Hi-Limit" Label
19	170511	2	1/8" M.P.T. Zirc (grease) Fitting
20	143164	2	1/8" F.P.T. Bulkhead Fitting
21	100472	2	1/4" x 1/8" M.P.T. Male Connector
22	143115	4	1/4" Nylo-Seal Tube
23	100472	2	1/4" x 1/8" M.P.T. Male Connector
24	143246	2	1/4-28 x 18" F.P.T. Fitting
25	114095	1	"Do Not Dry Mop Heads" Label
26	114006	1	"WARNING – Fire Hazard" Label
27	114077	1	"Grease Instruction" Label
28	114093	1	"Important Manual Reset Hi-Limit" Label
29	153007	4	1/4" Lock Washer

