

## CHANDLER™ DOUBLE BOWL KITCHEN SINK

- Dupont Corian® surface
- Double bowl design
- Top mount
- Silicone sealant supplied
- Available in center hole only, 3, or 4 faucet hole configuration

- 7048.001** Center hole only
- 7048.803** 3 hole
- 7048.804** 4 hole

### Nominal Dimensions:

914 x 559 x 254mm  
(36" x 22" x 10-1/2")

### Bowl sizes:

*Right Hand:* 359mm (14-1/8") wide  
413mm (16-1/4") front to back  
203mm (8") deep  
*Left Hand:* 432mm (17") wide  
476mm (18-3/4") front to back  
254mm (10") deep

### Compliance Certifications -

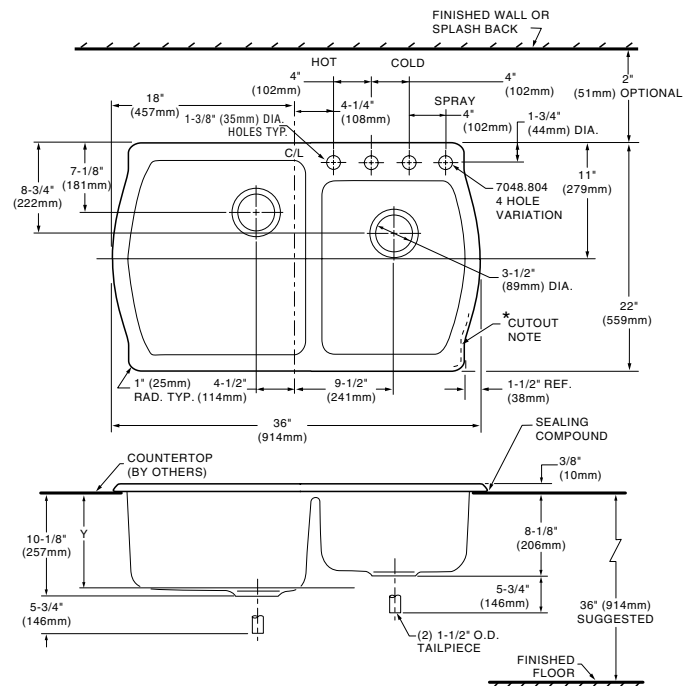
#### Meets or Exceeds the Following Specifications:

- ANSI Z124.6 for Non-Metallic Sinks

#### To Be Specified:

- Color:
- Faucet\*:
- Faucet Finish:
- Basket Strainer: 4331.013
- Soap Dispenser: 4503.115
- Traps:

\* See faucet section for available models



#### NOTES:

\* **SELF-RIMMING:** FOR COUNTERTOP CUTOUT AND INSTALLATION INSTRUCTIONS USE TEMPLATE SUPPLIED WITH SINK.

FITTINGS NOT INCLUDED AND MUST BE ORDERED SEPARATELY.

PROVIDE SUITABLE REINFORCEMENT FOR ALL WALL AND COUNTERTOP SUPPORTS.

**IMPORTANT:** Dimensions of fixtures are nominal and may vary within the range of tolerances established by ANSI Standard Z124.6 These measurements are subject to change or cancellation. No responsibility is assumed for use of superseded or voided leaflet.