

WELCOME

APOLLO PRO  
LONG RANGE HD WI-FI CAMERA

## GET STARTED

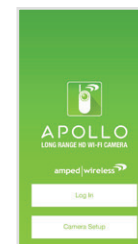
1 Find an installation location, attach the stand (a), attach the antenna (b), and plug in the Power Adapter (c). Do not mount your camera yet.



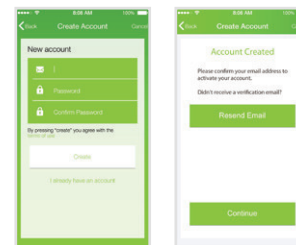
2 Download the Amped Wireless APOLLO Camera App for Android or iOS, on your phone or tablet.



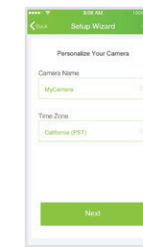
3 Open the App and tap **Camera Setup** to launch the Setup Wizard.



4 If you haven't already, you must now create an account. Once you tap **Create**, you will receive an email to verify your account. Follow the prompts in the email and then return to the App and press **Continue**.



5 Enter a name for your camera (i.e. Nursery). Tap **Next**.



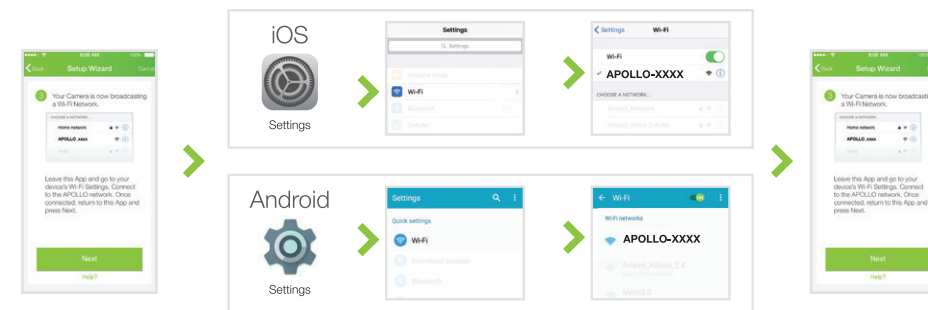
6 Press and hold the gray Setup button on the back of the camera for 3 seconds. The power LED on the front will begin to blink. Tap **Next**.  
If it does not blink, hold the button down for another 3 seconds.



7 The camera is now broadcasting a Wi-Fi network.

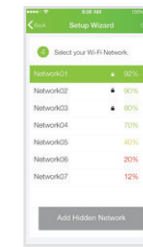
Leave the APOLLO App to access your device's Wi-Fi settings and connect to the network: **APOLLO-XXXX**

Your Wi-Fi Network Name can be found on the back of the camera. Once connected, re-open the APOLLO App and tap **Next**.

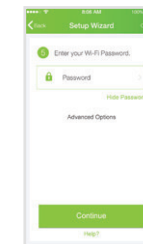


8 Select your Home Wi-Fi Network from the list.

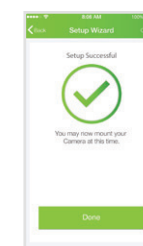
We recommend a network that has a 50% or greater signal strength and is green or yellow. If the signal is red or you do not see your network, you need to move the camera closer to your router.



9 If needed, enter the password for your Wi-Fi Network. Tap **Continue**.



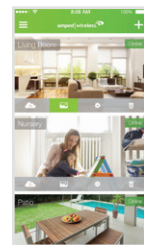
10 Once you see the Setup Successful page, setup is complete. You may now mount the camera and begin recording.



# EXPLORE THE APP

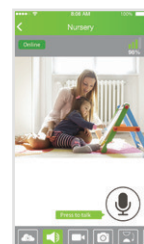
## Home Screen

Get a quick snapshot of every APOLLO Camera in your network, in one place. Here you can add or remove cameras and tap into each one for more actions.



## Camera View

Watch the live video feed and tap to hear the camera's audio, record what you see, talk back with 2-way audio, or adjust camera settings.



## Event Timeline

Scroll through a calendar of each camera's events. Recorded events like Motion Detection, Sound Detection or Full Time Recording are found here.



## Real Time Notifications

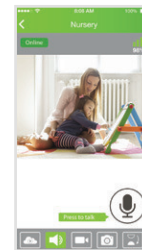
Receive instant or interval notifications from the camera when motion or noise is detected. Manage these alerts directly from the App.



## Viewing Features

Access and adjust a number of settings for each camera.

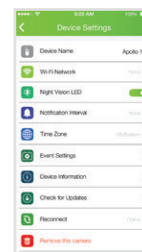
- |                                  |                             |
|----------------------------------|-----------------------------|
| View Cloud Recordings            | Horizontally flip the video |
| Listen to camera's audio         | Choose the video quality    |
| Record video to your device      | Change the lighting mode    |
| Take a snapshot of the live feed | Modify the brightness       |
| Vertically flip the video        | Adjust the contrast         |



## Camera & Notification Settings

Get a snapshot of your camera and APOLLO App settings.

- |                                   |                         |
|-----------------------------------|-------------------------|
| Connect to a new Wi-Fi Network    | See device information  |
| Turn Night Vision LEDs on and off | Reconnect to the camera |
| Choose your notification settings | Rename the camera       |
| Change the camera's time zone     | Remove the camera       |
| Adjust the event settings         |                         |



## Web Access

Live Camera feeds, recordings and settings are also accessible on the web.

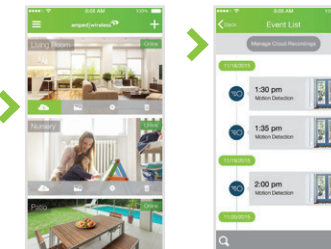
<http://apollo.ampedwireless.com>

# GET CLOUD RECORDING

Cloud Storage plans allow you to save, share, and revisit what your camera caught while you weren't looking. Your Cloud Recordings can be accessed on all of your devices, from wherever you are.

## Manage Cloud Recording

1. Open the APOLLO App
2. Tap on the Cloud Recording button
3. Tap Manage Cloud Recording
4. Select a plan that fits your needs



## Cloud Recording Plans

### Event-Based Recording

- Motion/sound triggered
- 1 plan for many cameras



### Continuous Recording

- Ongoing, 24/7
- 1 plan per camera



You can also enable and manage Cloud Recording via the web.

<http://apollo.ampedwireless.com>

# MEET THE CAMERA



## Power LED

Notifies you that the camera is on and recording. During the setup process, it will blink rapidly once the Setup button is activated.

- |  |                                    |
|--|------------------------------------|
|  | Connected, Camera is online        |
|  | Camera cannot connect to the cloud |

## Wi-Fi Signal Strength LED

Glows red, yellow, or green to inform you of the strength of the Wi-Fi signal that the camera is receiving. It assists with the camera's installation, allowing you to maximize the camera's range.

- |  |               |                              |
|--|---------------|------------------------------|
|  | 100% - 70%    | Excellent signal             |
|  | 69%-40%       | Good signal                  |
|  | Less than 40% | Poor signal, relocate camera |

# ASK FOR HELP

If you are experiencing problems with your camera setup, please contact our U.S.-based Elite Support.

1-800-573-8820 or 1-909-217-3168  
 techsupport@ampedwireless.com  
<http://www.ampedwireless.com/support>



# Regulatory Document

**A P O L L O**

**LONG RANGE HD WI-FI CAMERA**

LRC100 & LRC200

## ***WARRANTY AND REGULATORY INFORMATION***

### **The Amped Wireless (A division of Newo Corporation, Inc.) Limited Warranty**

**Warranty Period:** The Amped Wireless Limited Warranty is for one (1) year from the date of purchase for new products. Refurbished products carry the Limited Warranty for thirty (30) days after the date of purchase.

**Guarantee:** Amped Wireless warrants to the original purchaser that the hardware of this Amped Wireless product shall be free of defects in design, assembly, material, or workmanship.

**Conditions:** The Amped Wireless Limited Warranty is for repair or replacement only at the sole discretion of Amped Wireless. Amped Wireless does not issue any refunds for purchased product. In the event that Amped Wireless is unable to repair or replace a product (i.e. discontinued product), Amped Wireless will offer a credit toward the purchase of a similar product of equal or lesser value direct from Amped Wireless. Any repaired or replacement products will be warranted for the remainder of the original Warranty Period or thirty (30) days, whichever is longer. Amped Wireless reserves the right to discontinue any of its products without notice, and disclaims any limited warranty to repair or replace any such discontinued product. Amped Wireless reserves the right to revise or make changes to this product, its documentation, packaging, specifications, hardware, and software without notice. If any portion of the Amped Wireless Limited Warranty is found to be unenforceable, its remaining provisions shall remain in effect. All costs of shipping the product to Amped Wireless shall be borne solely by the purchaser.

**Limitations:** IN NO EVENT SHALL AMPED WIRELESS' (NEWO CORPORATION'S) LIABILITY EXCEED THE AMOUNT PAID BY YOU FOR THE PRODUCT FROM DIRECT, INDIRECT, SPECIAL, INCIDENTAL OR CONSEQUENTIAL DAMAGES RESULTING FROM THE USE OF THE PRODUCT, ITS ACCOMPANYING SOFTWARE, ACCESSORIES OR ITS DOCUMENTATION. The Amped Wireless Limited Warranty does not apply if: (a) the product assembly has been opened or damaged, (b) the product or its software or firmware has been altered or modified, (c) the product has not been used and installed in accordance to Amped Wireless' instructions, (d) the product has been subjected to misuse, or negligence. Amped Wireless does not guarantee the continued availability of a third party's service for which this product's use or operation may require. The Amped Wireless Limited Warranty does not protect against acts of God, vandalism, theft, normal wear and tear, obsolescence and environmental damages such as, but not limited to, weather and electrical disturbances. The Amped Wireless Limited Warranty is the sole warranty for this product. There are no other warranties, expressed or, except required by law, implied, including the implied warranty or condition of quality, performance merchantability, or fitness for any particular purpose.

**How to Claim Warranty:** In the event that you have a problem with this product, please go to [www.ampedwireless.com/support](http://www.ampedwireless.com/support) to find help on solving your problem. In the event that you cannot and need to file a warranty claim, please call Amped Wireless' Elite Support or visit <http://www.ampedwireless.com/support/center.html#rma> to obtain a Support Ticket Number (obtained from Technical Support Reps), fill out a Return Authorization (RMA) form and obtain a Return Authorization (RMA) number. A dated proof of original purchase and the RMA number is required to process warranty claims. You are responsible for properly packaging and shipping the product at your cost and risk to Amped Wireless. The bearer of cost related to shipping repaired or replaced product back to the purchaser will be at the sole

discretion of Amped Wireless and determined based on the details of each RMA case. Customers outside of the United States of America are responsible for all shipping and handling costs including custom duties, taxes and all other related charges.

**Technical Support:** The Amped Wireless Limited Warranty is not related to the terms, conditions and policies of Amped Wireless Elite Support offerings. For questions regarding support, please contact [techsupport@ampedwireless.com](mailto:techsupport@ampedwireless.com)

## Regulatory Information

**FCC Statement and Declaration:** Amped Wireless declares that this device complies with Part 15 of the FCC Rules and Regulations. Operation of this device is subject to the following two (2) conditions:

- (1) This device may not cause harmful interference
- (2) This device must accept any interference received, including interference that may cause undesired operation.

**FCC Notice:** This equipment has been tested and found to comply with the limits for a Class B digital device, pursuant to Part 15 of the FCC Rules. These limits are designed to provide reasonable protection against harmful interference in a residential installation. This equipment generates, uses and can radiate radio frequency energy and, if not installed and used in accordance with the instructions, may cause harmful interference to radio communications. However, there is no guarantee that interference will not occur in a particular installation. If this equipment does cause harmful interference to radio or television reception, which can be determined by turning the equipment off and on, the user is encouraged to try and correct the interference by one or more of the following measures:

- Reorient or relocate the receiving antenna.
- Increase the distance between the equipment and the receiver.

- Connect the equipment to an outlet on a circuit different from that to which the receiver is connected.
- Consult the dealer or an experienced radio/TV technician for help.

**FCC Caution and Safety Notices:** Any changes or modifications (including the antennas) made to this device that are not expressly approved by the manufacturer may void the user's authority to operate the equipment. This device and its antenna(s) must not be co-located or operating in conjunction with any other antenna or transmitter. Avoid use of this product near water or during an electrical storm as there may be a remote risk of electrical shock from lightning. This product may contain lead, known to the State of California to cause cancer, and birth defects or other reproductive harm. Wash hands after handling. This device must always be used with a Listed Computer or device.

For product available in the USA/Canada market, only channel 1~11 can be operated. Selection of other channels is not possible.

**FCC Radiation Exposure Statement:** This equipment complies with FCC radiation exposure limits set forth for an uncontrolled environment. This equipment should be installed and operated with minimum distance 20cm between the radiator & your body.



The antennas used for this transmitter must be installed to provide a separation distance of at least 20 cm from all persons and must not be co-located or operating in conjunction with any other antenna or transmitter.

**Industry Canada Statement:** This device complies with Industry Canada license-exempt RSS standard(s). Operation of this device is subject to the following two (2) conditions:

- (1) This device may not cause harmful interference
- (2) This device must accept any interference received, including interference that may cause undesired operation.

**Radiation Exposure Statement:** This equipment complies with IC RSS-102 radiation exposure limits set forth for an uncontrolled environment. This equipment should be installed and operated with minimum distance 20cm between the radiator and your body.

The transmitter must not be co-located or operating in conjunction with any other antenna or transmitter.

For product available in the USA/Canada market, only channel 1~11 can be operated. Selection of other channels is not possible.

This device has been designed to operate with an antenna having a maximum gain of 3.5 dBi at 2.4 GHz. Antenna having a higher gain is strictly prohibited per regulations of Industry Canada. The required antenna impedance is 50 ohms.

This radio transmitter has been approved by Industry Canada to operate with the antenna types listed below

with the maximum permissible gain and required antenna impedance for each antenna type indicated. Antenna types not included in this list, having a gain greater than the maximum gain indicated for that type, are strictly prohibited for use with this device.

No.	Antenna Type	For 2.4GHz Gain (dBi)	Antenna Connector
1	Dipole	3.5	RPSMA

**Déclaration d'Industrie Canada :** Le présent appareil est conforme aux CNR d'Industrie Canada applicables aux appareils radio exempts de licence. L'exploitation est autorisée aux deux conditions suivantes :

- (1) Cet appareil ne peut pas causer de brouillage préjudiciable
- (2) Cet appareil doit accepter toute interférence reçue, y compris les interférences pouvant provoquer un dysfonctionnement.

**Déclaration d'exposition à la radiation :** Cet équipement est conforme aux limites d'exposition aux rayonnements IC RSS-102 établies pour un environnement non contrôlé. Cet équipement doit être installé et utilisé avec un minimum de 20 cm de distance entre la source de rayonnement et votre corps.

L'émetteur ne doit ni être utilisé avec une autre antenne ou un autre émetteur ni se trouver à leur proximité.

Pour les produits disponibles aux Etats-Unis / Canada du marche, seul le canal 1 a 11 peuvent etre exploites. Selection d'autres canaux n'est pas possible.

Cet appareil a été conçu pour fonctionner avec une antenne ayant un gain maximum de 3,5 dBi sur les bandes 2,4GHz. L'utilisation d'antenne ayant un gain supérieur est strictement interdit par le règlement d'Industrie Canada. L'impédance d'antenne requise est 50 ohms.

Le present emetteur radio a ete approuve par Industrie Canada pour fonctionner avec les types d'antenne enumeres ci-dessous et ayant un gain admissible maximal et l'impedance requise pour chaque type d'antenne. Les types d'antenne non inclus dans cette liste, ou dont le gain est superieur au gain maximal indique, sont strictement interdits pour l'exploitation de l'emetteur.

N°	Type d'antenne	Gain en 2,4 GHz (dBi)	Connecteur d'antenne
1	Dipole	3,5	RPSMA

## ***LEGAL NOTICES & DISCLAIMERS***

### **Copyright Information and Trademark Usage Guidelines**

© 2016 Amped Wireless / Newo Corporation. All rights reserved. Amped Wireless, Newo Corporation, and the Amped Wireless logo are registered trademarks or trademarks of Newo Corporation. All non-Amped Wireless trademarks, logos, brands and products are trademarks or registered trademarks of their respective owners. Amped Wireless does not claim any relation. Mention of non-Amped Wireless products and brands are for information purposes only and does not constitute an endorsement or affiliation.

Amped Wireless authorizes you to copy materials published by Amped Wireless solely for non-commercial use within your organization in support of Amped Wireless products. No other use of this information is authorized. Any copy of these materials which you make shall retain all copyright and other proprietary notices in the same form and manner as on the original. Except as specified above, nothing contained herein shall be construed as conferring by implication, estoppel or otherwise any license or right under any patent, trademark or copyright of Amped Wireless or any third party.

All contents of this product, including Software, are protected by copyright, except as permitted herein. No portion of the information may be reproduced without prior written permission from Amped Wireless. The

distribution, modification, publication and transmission of any content of this product for public or commercial purposes is strictly prohibited.

The Amped Wireless logo requires permission for use. For use of the Amped Wireless logo, please email [legal@ampedwireless.com](mailto:legal@ampedwireless.com). Use of Amped Wireless' trademarks requires the use of the proper trademark symbol in all usage cases.

The guidelines for trademark usage apply to all Amped Wireless customers, employees, vendors, consultants, licensees and any other third party.

### **Disclaimers**

Amped Wireless makes all attempts in providing accurate information on all media. However, Amped Wireless makes no warranty as to the accuracy of the information, including representations and warranties about the accuracy of product specifications, marketing material, product availability, new product launch dates and all other content herein. Amped Wireless reserves the right to update and change information without prior notice. All information provided is provided "AS IS" with all faults without warranty of any kind. Either expressed or implied. Amped Wireless and its suppliers disclaim all warranties, expressed or implied including, without limitation. Amped Wireless and its suppliers shall not be liable for any indirect, special, consequential, or incidental damages including, without limitation, lost profits or revenues, cost of replacement goods, loss or

damage to data arising out of the use or inability to use any Amped Wireless product, damages resulting from use of or reliance on information present, even with prior notice to Amped Wireless.

All non-Amped Wireless trademarks, logos, brands and products are trademarks or registered trademarks of their respective owners. Amped Wireless does not claim any relation. Mention of non-Amped Wireless products and brands are for information purposes only and does not constitute an endorsement or affiliation.

Product wireless range specifications are based on performance test results. Actual performance may vary due to differences in operating environments, building materials and wireless obstructions. Performance may increase or decrease over the stated specification. Wireless coverage claims are used only as a reference and are not guaranteed as each wireless network is uniquely different.

Maximum wireless signal rates are derived from IEEE 802.11 standard specifications. Actual data throughput may vary as a result of network conditions and environmental factors.

Wi-Fi Range Extenders may not work with non-standard Wi-Fi routers or routers with altered firmware or proprietary firmware, such as those from third party sources or some Internet service providers. May not work with routers that do not comply with IEEE or Wi-Fi standards.

## Software Licenses / Disclaimers

This product contains Software (including firmware), licensed to you, the purchaser, by Amped Wireless. This also includes Software downloaded from an authorized website, such as [www.ampedwireless.com](http://www.ampedwireless.com) or from an authorized application market such as Google Play or Apple's App Store.

This license allows you to operate the Software in the manner described in the user's manual for the purchased product. You can make as many copies of the Software as needed for your personal use. Modifying or tampering of the Software, including but not limited to any Open Source Software, is solely at your own risk. Amped Wireless is not responsible for any such modification or tampering. Amped Wireless will not support or warrant any product in which you have or have attempted to modify the Software provided by Amped Wireless. You may not lease, sublicense, resell, redistribute or otherwise transfer the Software without written consent from Amped Wireless.

The Software is provided to you "as is" with all faults and without warranties of any kind. In particular, Amped Wireless does not guarantee that the Software will be error-free or that the Software will be free from system threats or attacks from viruses. Amped Wireless does not warrant that the Software will meet your expectations or that the software will be suitable for your particular situation. Amped Wireless warrants that any media (such as an included CD) on which the Software is provided to be free from defects. If you have an eligible warranty claim for defective media, Amped Wireless will replace the Software media.



IT IS YOUR RESPONSIBILITY TO BACK UP YOUR SYSTEM INCLUDING, WITHOUT LIMITATION, ANY DATA THAT YOU MAY USE OR POSSESS IN CONNECTION WITH THE PRODUCT. ANY MATERIAL, INFORMATION OR DATA DOWNLOADED OR OTHERWISE OBTAINED IS ACCESSED AT YOUR OWN DISCRETION AND RISK, AND YOU WILL BE RESPONSIBLE FOR ANY DAMAGE TO YOUR COMPUTER SYSTEM OR PRODUCT, OR LOSS OF DATA THAT RESULTS FROM THE DOWNLOAD OF SUCH MATERIAL, INFORMATION OR DATA.

AMPED WIRELESS IS NOT RESPONSIBLE FOR ANY DAMAGE TO THE PURCHASER'S COMPUTER SYSTEM OR DATA.

All title and copyrights in and to the Software and any copies thereof are owned by Amped Wireless or its partners/suppliers. All title and intellectual property rights in and to the content which may be accessed through use of the Software is the property of the respective content owner and may be protected by applicable copyright or other intellectual property laws and treaties. This license grants you no rights to use such content. You may not delete any copyright, trademark or other proprietary notices from the Software or documentation.

**Dispute Resolution / Arbitration**

This section describes how you agree to resolve any disputes with Amped Wireless regarding these Terms of Use or your purchase of any product from Amped Wireless and your use of that product. You and Amped Wireless agree to the following resolution process.

To begin with, you agree that any claim that you might have against us regarding these Terms of Use or your purchase of any Amped Wireless product or use of that product must be resolved through binding arbitration before the American Arbitration Association using its Commercial Arbitration Rules. The arbitrator shall have exclusive authority to the extent permitted by law to resolve all disputes arising out of or relating to the interpretation, applicability, enforceability, or formation of our agreement, including, but not limited to, any claim that all or part of this agreement is void or voidable. The arbitrator shall also have exclusive authority to the extent permitted by law to decide the arbitrability of any claim or dispute between you and Amped Wireless.

Because we prefer to resolve our issues with you directly, you agree to arbitrate with Amped Wireless only in your individual capacity, not as a representative or member of a class. As such, your claims may not be joined with any other claims and there shall be no authority for any dispute to be arbitrated on a class-action basis or brought by a purported class representative.

It is important that you understand that the arbitrator's decision will be binding and may be entered as a judgment in any court of competent jurisdiction. If the arbitrator rules against Amped Wireless, in addition to accepting whatever responsibility is ordered by the arbitrator, we will reimburse your reasonable attorneys' fees and costs.

It's important to us that we address any issues you might have promptly. To help us do that, you agree to begin any arbitration within one year after your claim arose; otherwise, your claim is waived.

Unless you and Amped Wireless agree otherwise, any arbitration hearings will take place in the county where you reside. If your claim is for \$10,000 or less, you may choose whether the arbitration will be conducted solely on the basis of documents submitted to the arbitrator, through a telephonic hearing, or by an in-person hearing as established by the AAA Rules. If your claim exceeds \$10,000, the right to a hearing will be determined by the AAA Rules.

If your claim against Amped Wireless is for less than \$10,000, Amped Wireless will pay all arbitration fees. If your claim against Amped Wireless is for \$10,000 or more, you are responsible for paying your own portion of the fees set forth in the AAA's fee schedule for consumer disputes, and Amped Wireless will pay all remaining arbitration fees. If you believe you cannot afford the AAA's fee, you may apply to the AAA for a waiver.

As an exception to this arbitration agreement, Amped Wireless is happy to give you the right to pursue in small claims court any claim that is within that court's jurisdiction as long as you proceed only on an individual basis.

We would hope that our customer service agents could resolve any disputes you have with us without resorting to arbitration. Before initiating any arbitration proceeding, you agree to first discuss the matter informally with Amped Wireless for at least 30 days. To do that, please send your full name and contact information, your concern and your proposed solution by mail to us at: 13089 Peyton Dr. #C307, Chino Hills, CA 91709; Attn: Legal Department.

This Agreement and the rights of the parties hereunder shall be governed by and construed in accordance with the laws of the State of California, exclusive of conflict or choice of law rules.

The parties acknowledge that this Agreement evidences a transaction involving interstate commerce. Notwithstanding the provision in the preceding paragraph with respect to applicable substantive law, any arbitration conducted pursuant to the terms of this Agreement shall be governed by the Federal Arbitration Act (9 U.S.C., Secs. 1-16).

**Mailing Address Only**

Amped Wireless 13089 Peyton Dr. #C307 Chino Hills, CA 91709

Email: [legal@ampedwireless.com](mailto:legal@ampedwireless.com)



tech support 888-573-8820  
e-mail [techsupport@ampedwireless.com](mailto:techsupport@ampedwireless.com)  
web [www.ampedwireless.com](http://www.ampedwireless.com)

Amped Wireless  
A Division of Newo Corporation  
Copyright © 2016 Amped Wireless / Newo Corporation. All rights reserved.  
Amped Wireless, Newo Corporation, and the Amped Wireless Logo are registered trademarks or trademarks of Newo Corporation.