

Angelcare®

FOR YOUR PEACE OF MIND

OWNER'S MANUAL

MOVEMENT, VIDEO,
& SOUND MONITOR

Model AC1300




EN
2

FR
19

ES
39



TABLE OF CONTENTS

 WARNINGS	3
AC1300 SETUP REQUIREMENTS	5
STEP 1 - Charging the Parent Unit (9 hours).....	6
STEP 2 - Installing the Sensor Pad	7
STEP 3 - Setting up the Nursery Unit.....	9
STEP 4 - Turning on your monitor.....	9
STEP 5 - Testing and getting to know your monitor.....	10
STEP 6 - Activating and deactivating additional functions.....	13
Troubleshooting	17
Limited warranty	18
Technical specifications.....	18
FRANÇAIS	19
ESPAÑOL	39

OWNER'S MANUAL

KEEP YOUR OWNER'S MANUAL FOR FUTURE REFERENCE.

PLEASE READ THE WARNINGS AND INSTRUCTIONS CAREFULLY BEFORE ASSEMBLING & USING THE PRODUCT.

FAILURE TO FOLLOW THE WARNINGS AND THE INSTRUCTIONS COULD RESULT IN SERIOUS INJURY OR DEATH OR DAMAGES TO THE PRODUCT.

THE SENSOR PAD FEATURE IS NOT FOR USE WITH ADULTS, CHILDREN OR INFANTS OLDER THAN 24 MONTHS.

THE SENSOR PAD IS NOT INTENDED TO BE USED TO DETERMINE IF A CHILD IS OUT OF THE CRIB.

WARNING

Adult assembly required.
Keep small parts away from children when assembling.

We, at Angelcare®, stand behind all of our products.
If you are not completely satisfied or have any questions,
United States and Canada: Please contact us at: angelcare@cdecinc.ca
Other countries: Please contact your local distributor.

FCC AND IC REGULATIONS

RF radiation exposure statement

The Nursery Unit complies with FCC RF radiation exposure limits set forth for an uncontrolled environment.
Caution: To maintain the compliance with the FCC's and Industry Canada's RF exposure guideline, install the Nursery Unit at least 20 cm from ALL persons. The transmitter of this device must not be co-located or operating in conjunction with any other antenna or transmitter.

Industry Canada

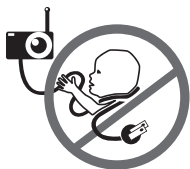
This product meets the applicable Industry Canada technical specifications.
CAN ICES-3 (B)/NMB-3 (B)



⚠ WARNINGS

1. THIS PRODUCT CANNOT REPLACE RESPONSIBLE ADULT SUPERVISION. This product is designed to aid in the monitoring of your child. When using the monitor, you must still provide the supervision necessary for the continued safety of your child. Monitoring of premature babies, or those considered to be at risk, should always be carried out under the supervision of a health professional. This monitor is not intended to be used as a medical monitor.

2. WARNING Strangulation Hazard — Children have **STRANGLED** in cords. Keep adapter cords out of the reach of children (more than 3 feet [0.9 meter] away). NEVER use Sensor Pad(s) without the protective cord covering. Check protective cord covering before each use. Immediately discontinue use of Sensor Pad(s) if protective covering is damaged or broken.



3. Never use extension cords with adapters. ONLY use the adapters provided.

4. When an adapter is plugged into an electrical outlet, DO NOT touch the exposed end.

5. ALWAYS be sure that both the transmitter and receiver are working properly and are within range of each other. Test the monitor before first use, periodically and when changing location of the Nursery Unit.

6. ALWAYS be sure to immediately check on baby whenever an alarm sounds.

7. DO NOT use monitor near water (such as bath tub, sink, etc.).



8. Keep monitor AWAY from heat sources (such as stoves, radiators, etc.).

9. ALWAYS place both the Nursery Unit and the Parent Unit on a flat surface in an upright position and allow for proper ventilation. **DO NOT** place on sofas, cushions, beds, etc. which may block ventilation.

10. This monitor uses public airwaves to transmit signals. The Parent Unit may pick up signals or interference from other nursery monitors in your area. Your monitor may even be picked up by other households. To protect your privacy, make sure both units are turned **OFF** when not in use. If you experience interference, change the channel on both units.

11. This product is NOT a toy. DO NOT allow children to play with it.

12. This product contains small parts. Adult assembly required. Exercise care when unpacking and assembling the product and keep small parts away from children.

13. When using the monitor, the room temperature should be between 50°F (10°C) and 104°F (40°C).

⚠ BATTERY WARNING

14. Use ONLY the enclosed lithium rechargeable battery that came with the Parent Unit. In the Nursery Unit, **DO NOT** mix old and new batteries. **DO NOT** mix alkaline, standard or rechargeable batteries. Insert batteries with correct polarity. **DO NOT** short-circuit supply terminals. **ONLY** use the recommended batteries or equivalent (volts and size) and the correct adapter. Remove batteries in the Nursery Unit when product is stored for long periods of time or when batteries are exhausted. Dispose exhausted batteries properly. Keep all batteries away from children.

15. IMPORTANT SAFETY INSTRUCTIONS

15.1 Heed all warnings – All warnings on the product and in the operating instructions should be adhered to.

15.2 Follow all instructions – All operating and use instructions should be followed.

15.3 Water and moisture – **DO NOT** use this apparatus near water. For example, near a bath tub, wash bowl, kitchen sink, laundry tub, in a wet environment or near a swimming pool and the like. Care should be taken so that objects **DO NOT** fall onto units and that liquids are not spilled into either unit or Sensor Pad through its openings.

15.4 Cleaning – Disconnect all units before cleaning. **DO NOT** immerse in water any part of the monitor. Clean only with dry cloth.

15.5 Ventilation – **DO NOT** block any ventilation openings. Allow for proper ventilation when units are in use. **DO NOT** cover the Nursery Unit or the Parent Unit with any object such as a blanket. **DO NOT** place it in a drawer or in any location which would muffle the sound or interfere with the normal flow of air.

15.6 Heat sources – **DO NOT** install near any heat sources such as radiators, heat registers, stoves, TVs or other apparatus (including amplifiers) that produce heat. Heat can damage the case or electrical parts.

15.7 Power cord protection – Protect the Sensor Pad cord and Adapter's power cord from being walked on or pinched by furniture or other items – Power supply cords should be routed so that they are not likely to be walked on or pinched by items upon or against them, paying particular attention to cords and plugs, convenience receptacle, and the point where they exit from the product. The socket outlet shall be installed near the equipment and shall be easily accessible. Make sure to plug the adapter to the socket outlet nearest to the equipment and that is easily accessible. To disconnect from mains, unplug the adapter.

15.8 Accessories – Only use attachments/accessories specified by the manufacturer. **DO NOT** place this product on an unstable cart, stand, tripod, bracket or table. The product may fall, causing serious injury to a child or adult and serious damage to the product. Use **ONLY** with a

cart, stand, tripod, bracket or table recommended by the manufacturer or sold with the product. Any mounting of the product should follow the manufacturer's instructions.

15.9 Unplug this appliance during lightning storms or when not used for long periods of time.

15.10 Servicing - DO NOT attempt to service this product yourself as opening or removing covers (except battery door) may expose you to dangerous voltage or other hazards.

15.11 Replacement parts - When replacement parts are required, be sure the replacement parts specified by the manufacturer have the same characteristic as the original part. Unauthorized substitution may result in fire, electric shock or other hazards.

15.12 Usage - This baby monitor is intended as an aid. It is NOT a substitute for responsible and proper adult supervision and should not be used as such. Use this appliance ONLY for its intended use as described in this manual.

15.13 Power Sources - Operate this product only from the type of power source indicated on the type plate of the adaptor. If you are unsure of the type of power supply to your home, consult your dealer or local power company.

15.14 Overloading - DO NOT overload wall outlets, extension cords or integral convenience receptacles as this can result in a risk of fire or electric shock.

15.15 Object and Liquid Entry - NEVER push objects of any kind into this product through casing slots as they may touch dangerous voltage points or short out parts that could result in a risk of fire or electric shock. NEVER spill liquid of any kind on the product.

15.16 Antenna - The antenna used for this transmitter must be installed to provide a separation distance of at least 7.9" (20 cm) from all persons and must not be collocated or operating in conjunction with any other antenna or transmitter.

15.17 Power Lines - An outside antenna system should NOT be located in the vicinity of overhead power lines or other electric light or power circuit, or where it can fall into such power lines or circuits as contact with them may be fatal.

15.18 Vibration Source - When the monitor is in use, DO NOT use a crib mobile or other crib accessories that may produce vibrations. Other sources of vibrations may include fans, washing machines, loud music, etc. These sources of vibration may interfere with the performance of your Angelcare® monitor and the alarm will not sound if it continues to detect any movement other than your baby's. Be sure all vibration sources are eliminated before using the monitor. You may experience false alarms for several reasons. The most common reason is the Nursery Unit has not been turned **OFF** after you have removed your baby from the crib. Another reason is the Sensor Pad has not been placed under the mattress properly. Be sure the Sensor Pad is on a flat, firm surface with the printed side facing up. The sensitivity level may also need to be adjusted. Refer to **Step 5.1**. Always be sure to immediately check on baby whenever an alarm sounds.

15.19 Sensor Pad - Your Sensor Pad can be used in any crib that is stationary. If the crib has a spring or slat base, place a hard board between the crib base and the Sensor Pad measuring at least 13" x 13" (33 x 33 cm) and 1/4 inch (6 mm) thick. Only use your Angelcare® monitor in a stationary sleeping environment such as a crib where the Sensor Pad can rest on a completely flat, firm surface. The sensor pad is made of plastic and does not permit the air to circulate. Therefore, mildew build up could develop underneath the mattress in the sensor pad area. We suggest rotating the mattress regularly to prevent any mildew.

16. IMPORTANT SAFETY INSTRUCTIONS RELATED TO USE OF BATTERIES

16.1 Use ONLY the type and size of batteries specified in the owner's manual. There is a risk of explosion if batteries are replaced with an incorrect type.

16.2 Use ONLY the enclosed lithium rechargeable battery and/or the adapter provided for the Parent Unit. DO NOT attempt to replace the battery or you will severely damage the unit.

16.3 Charge the battery for 9 hours prior to first use. Be sure to have the monitor in the **OFF** position during this period. ONLY use the adapters included with your monitor.

16.4 DO NOT use these adapters with any other equipments.

16.5 When unplugging the adapter from the Nursery Unit, be sure it is switched to the **OFF** position. If it isn't, the unit will revert to battery mode if batteries are installed.

16.6 DO NOT use rechargeable batteries in the Nursery Unit. Use alkaline batteries ONLY.

16.7 DO NOT dispose batteries in fire. They may explode. Check with local regulations for possible special disposal instructions.

16.8 Exercise care in handling batteries in order not to short out the batteries with conducting materials such as rings, bracelets and keys. Overcharging, short circuiting, reverse charging, mutilation, or incineration of batteries must be avoided to prevent one or more of the following occurrences: release of toxic materials, release of hydrogen and/or oxygen, gas and rise in surface temperature.

16.9 DO NOT attempt to recharge batteries provided with or identified for use with this product that are not intended to be charged. The batteries may leak corrosive electrolyte or explode.

16.10 DO NOT attempt to rejuvenate the batteries provided with or identified for use with this product by heating them. Sudden release of battery electrolyte may occur, causing burns or irritation to eyes or skin.

16.11 If and when necessary, the batteries must be replaced with identical new ones or equivalent (volts and size). If a battery to be replaced is connected with other batteries in series, replace the other batteries at the same time as well. DO NOT mix old and new batteries.

16.12 Reverse polarity installation of the batteries in the end product must be avoided. Reverse insertion of batteries can cause charging, and that may result in leakage or explosion.



16.13 Remove batteries from the Nursery Unit if you store the product over 30 days because the batteries could leak and damage the product.

16.14 Discard 'dead' batteries as soon as possible since 'dead' batteries are more likely to leak in a product. If a battery has leaked or vented, it should be replaced immediately using protective gloves.

16.15 DO NOT store this product, or the batteries provided with or identified for use with this product, in high-temperature areas.

FCC WARNING

17. (North America Only)

17.1 Warning: Changes or modifications to this equipment not expressly approved by the party responsible for compliance could void the user's authority to operate the equipment.

17.2 NOTE: This equipment has been tested and found to comply with part 15 of the FCC Rules and the Industry Canada license-exempt RSS standard(s). These limits are designed to provide reasonable protection against harmful interference in a residential installation. This equipment generates, uses and can radiate radio frequency energy and, if not installed and used in accordance with the instructions, may cause harmful interference to radio communications.

17.3 However, there is no guarantee that interference will not occur in a particular installation. If this equipment does cause harmful interference to radio or television reception, which can be determined by turning the equipment **OFF** and **ON**, the user is encouraged to try to correct the interference by one or more of the following measures:

- Reorient or relocate the receiving antenna.
- Increase the separation between the equipment and receiver.
- Connect the equipment into an outlet on a circuit different from that to which the receiver is connected.
- Consult the dealer or an experienced radio/TV technician for help.

17.4 This device complies with the part 15 of the FCC Rules and the Industry Canada license - exempt RSS standards(s). Operation is subject to the following two conditions:

(1) This device may not cause harmful interference, and

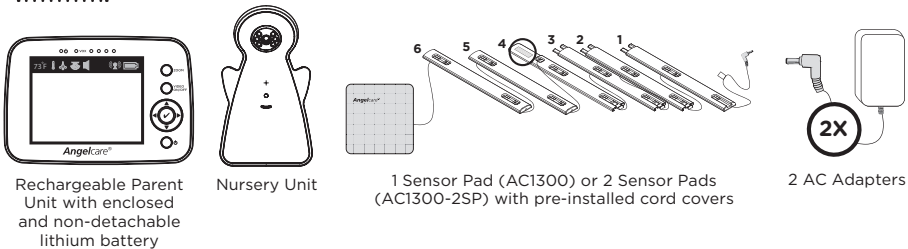
(2) This device must accept any interference received, including interference that may cause undesired operation.

SETUP REQUIREMENTS

VIDEO, MOVEMENT
& SOUND MONITOR

Model AC1300

INCLUDED:



YOU MUST PREPARE:

One hardboard (not included)

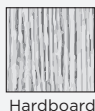
Thickness: **1/4" (6 mm)**

Minimum dimensions:

13" x 13" (33 x 33 cm)

Maximum dimensions:

equal to the mattress size



IMPORTANT

The hardboard must be larger than the Sensor Pad surface area or in the case of the AC1300-2SP of two Sensor Pads.

WHAT YOU WILL NEED (NOT INCLUDED):

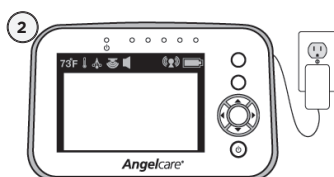
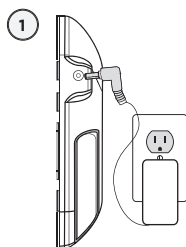


3 AA Alkaline Batteries for Nursery Unit



Miniature Philips Screwdriver

STEP 1 - CHARGING THE PARENT UNIT (9 HOURS)



IMPORTANT

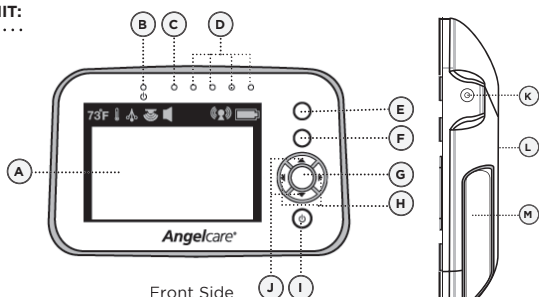
The Parent Unit uses a non-removable rechargeable lithium battery. **DO NOT** attempt to change it.

- 1) Connect the adapter to the Parent Unit and into an electrical outlet.
- 2) Charge the unit for **9 continuous hours (prior to first use)**.

NOTE:

To optimize your battery performance please refer to Battery Guidelines in the Troubleshooting section.

PARENT UNIT:



Front Side

Right Side

- A) 3.5" LCD Screen
- B) Power **ON/OFF** Indicator
- C) VOX Indicator
- D) Sound Light Indicator
- E) Zoom button
- F) **VIDEO ON/OFF** button
- G) MENU/SELECT button
- H) Brightness (+ or -)
- I) Power **ON/OFF**
- J) UP/DOWN button
- K) Adapter Outlet
- L) Speaker (not shown)
- M) Tripod

WARNING

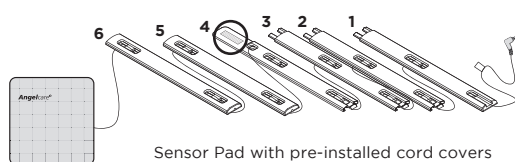
STRANGULATION HAZARD.

Children have **STRANGLED** in cords:

- Keep adapter cords out of the reach of children (more than 3 feet [0.9 meter] away).
- Because of the serious strangulation risk to infants and toddlers, parents and caregivers should never place the Nursery Unit within 3 feet (0.9 meter) of a crib.
- **NEVER** use Sensor Pad without the cord covers. Check cord covers before each use to ensure it is securely placed under the leg of the crib. Discontinue use of Sensor Pad if any cord covers are damaged or broken.
- **NEVER** use extension cords with adapters. **ONLY** use the adapters provided. This product is not a toy. Never allow children to play with it.



STEP 2 - INSTALLING THE SENSOR PAD



Sensor Pad with pre-installed cord covers

Cord covers 1, 2, 3, 4:

Position on floor

Cord cover 4:

Contains double sided tape to securely install beneath crib leg

Cord cover 5:

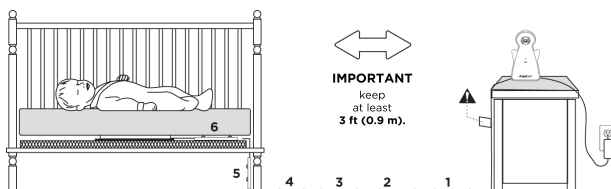
Position vertically between mattress support and floor

Cord cover 6:

Place under the mattress

2.1 - SELECT A LOCATION FOR THE NURSERY UNIT

Select a location for the Nursery Unit that is at least **3 feet [0.9 meter]** away from the crib.



IMPORTANT
keep
at least
3 ft (0.9 m).

IMPORTANT

Place the crib near a supporting wall and far from air currents. Install the Nursery Unit on a flat, stable surface facing the crib at a distance of at least **3 feet (0.9 meter)**. Make sure to plug the adapter to the socket outlet nearest to the equipment and that is easily accessible.

2.2 - SELECT THE CRIB LEG YOU WILL BE USING TO SECURE THE CORD COVERS

RECOMMENDED

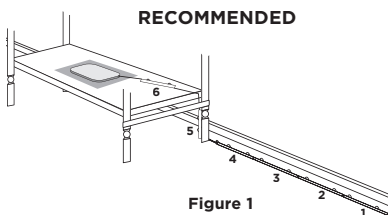


Figure 1

OR

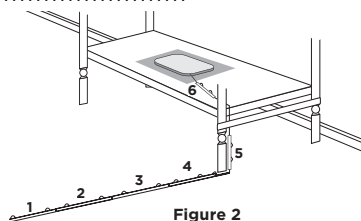
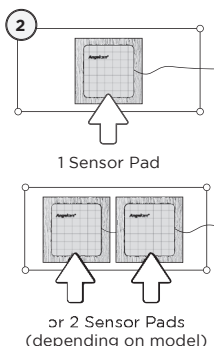


Figure 2

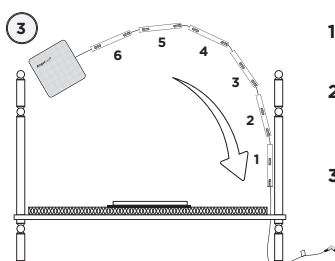
- 1) Use the crib leg by the wall closest to the Nursery Unit (**Figure 1**). In cases where the Nursery Unit is across the room, use the leg closest to the Nursery Unit to position the covered wire (**Figure 2**). It is always preferable that the covered cord run along a wall.

2.3 - INSTALL THE SENSOR PAD ON THE MATTRESS SUPPORT

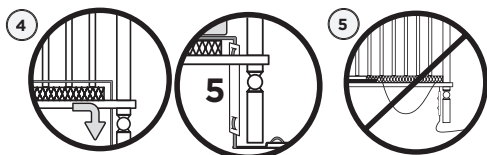


1 Sensor Pad

or 2 Sensor Pads
(depending on model)

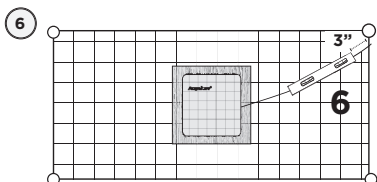


- 1) Remove the mattress from the crib.
- 2) Place the Sensor Pad(s) - printed side up - **on top of the hardboard**.
- 3) Run the connection pin, warning label and the first 5 cord covers down along the backside of the crib leg, **between the mattress support and the inside edge of the crib**.



4) Bring the first 4 cord covers down the floor, and keep the 5th cord cover vertically, along the backside of the crib leg, **(between the mattress and the inside edge of the crib).**

5) Remove any cord slack to make sure no parts of the cord are loose.

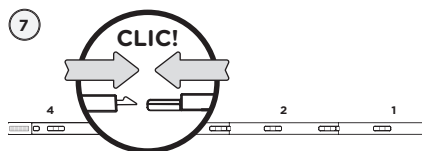


6) Place the 6th cord cover approximately 3 po (8 cm) from the edge of the mattress support.

7) Snap together the remaining cord covers that will run along the floor.

... The Sensor Pad functions with any size and type of mattress except memory-foam mattresses and hollow frame mattresses.

... The hardboard maintains a constant pressure on the Sensor Pad, enabling it to detect the baby's movements even when the baby is at the edges of the crib.



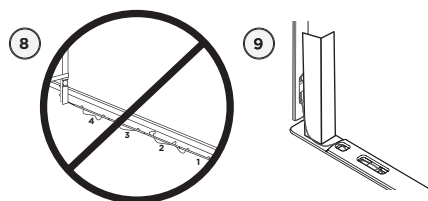
8) Remove any cord slack to make sure no parts of the cord are loose.

9) Peel off the double-sided tape on the 4th cord cover and place it securely under the crib leg.

10) Install the Nursery Unit on a flat, stable surface facing the crib at a distance of at least 3 feet (0.9 meter) and plug the Sensor Pad cord into the Nursery Unit.

11) Check to make sure the Sensor Pad has not moved from position.

12) Place the mattress back inside the crib.

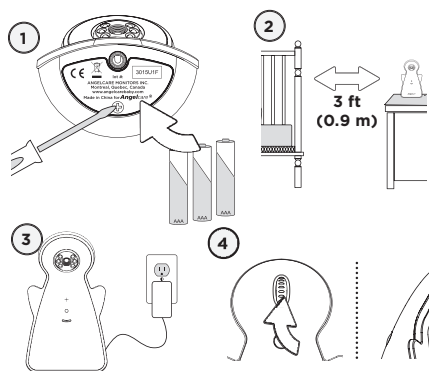


⚠ WARNING STRANGULATION HAZARD

- Remove all slack from Sensor Pad Cord.
- When lowering the mattress support as your child grows, slide the vertical Cord Cover (5) upward so it remains approximately in the center between the mattress support and the floor. Slide the Sensor Pad Cord through the Floor Cover to eliminate any additional slack.

- The Sensor Pad is not designed for use with adults, children or infants older than 24 months.
- Discontinue used of the Sensor Pad when child is older than 24 months. Remove Sensor Pad from crib and store for future use.
- **BEFORE FIRST TIME USE:** To test that the unit is ready for use, refer to instruction manual on how to test that the installation has been done correctly.

STEP 3 - SETTING UP THE NURSERY UNIT

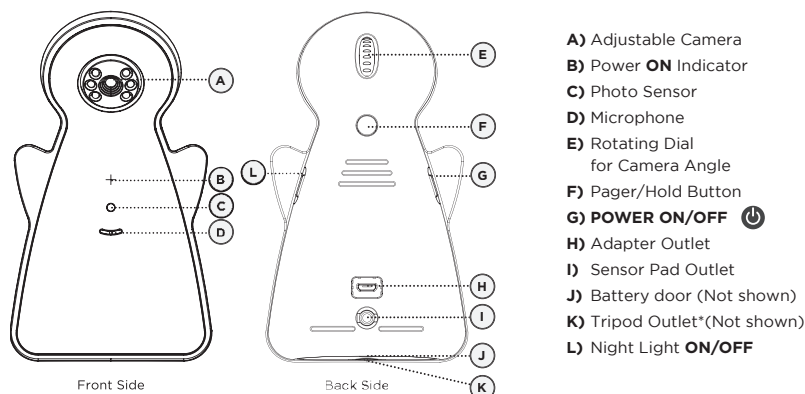


- 1) Remove the battery door and insert 3 AA Alkaline Batteries (not included).
- 2) Place the Nursery Unit at a **minimum of 3 feet (0.9 meter)** away from the crib.
- 3) Connect the adapter to the Nursery Unit and into an electrical outlet.
- 4) Direct the angle of the camera toward the crib using the rotating dial.

NOTE:

The batteries maintain power supply in case of power outage.

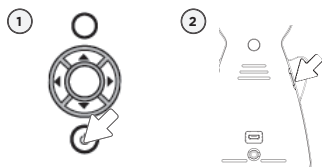
NURSERY UNIT:



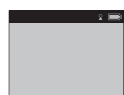
- A) Adjustable Camera
- B) Power **ON** Indicator
- C) Photo Sensor
- D) Microphone
- E) Rotating Dial for Camera Angle
- F) Pager/Hold Button
- G) **POWER ON/OFF**
- H) Adapter Outlet
- I) Sensor Pad Outlet
- J) Battery door (Not shown)
- K) Tripod Outlet* (Not shown)
- L) Night Light **ON/OFF**

* Nursery Unit may be installed on a tripod (not included).

STEP 4 - TURNING ON YOUR MONITOR



- 1) Press and hold the Parent Unit **ON/OFF** button for 2 seconds until LCD screen is turned **ON**. Angelcare's logo will be shown for 1 second.
- 2) Push and hold the Nursery Unit Power **ON/ OFF** button for 2 seconds.
- 3) The Parent Unit will display **Video** mode screen.



When Parent Unit is turned **ON** and Nursery Unit is **OFF**, Parent Unit will display **Disconnected** mode and will turn itself **OFF** after 60 seconds.



- 1) If there is a lost connection between the 2 units after 1.5 minutes, the **Out-of-Range** alarm will sound on the Parent Unit (refer to troubleshooting):
 - The **Out-of-Range** icon will appear on the screen.
 - The **Lost Connection** icon will appear on the indicator bar.

INDICATION BAR IMPORTANT ICONS



73°F **Temperature icon:** Indicates room temperature



Temperature Alarm icon: Indicates Temperature Alarm is active



Pendulum icon: Indicates the Movement Sensor is active



Night View Mode icon: Night View Mode



Sound icon: Indicates that Sound function is active

Connection icon: Indicates the connection quality between the Parent Unit and the Nursery Unit.

Good connection

Poor connection

Lost connection

Out-of-Range

Battery Level icon: Indicates battery level

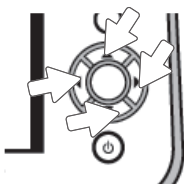
Empty

1/3 Full

2/3 Full

Full

STEP 5 - TESTING AND GETTING TO KNOW YOUR MONITOR



The Angelcare® monitor can be used with the pre-program factory settings or you can also customize your settings to your preference. Main menu on the LCD display shows the different operation settings. Use the direction keys to set or check the different functions on the Parent Unit.

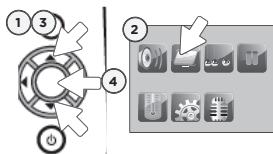
Press the **Menu/Select** button to select an icon. The light icon will change from blue to green to show that the icon is selected. Press **VIDEO ON/OFF** button to exit or to go back to main menu when in sub-menu.

IMPORTANT

When in menu or sub-menu modes, sound transmission between Parent and Nursery Units will be temporarily deactivated. ONLY movement-detection alarm will remain active (if function is activated).

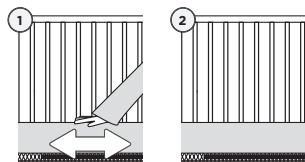
5.1 - SENSOR PAD

TO ACTIVATE THE SENSOR PAD:



- 1) Press **Menu/Select** button to access main menu.
- 2) Select the **Movement** icon.
- 3) Use the up and down arrows to **activate** or **deactivate** the **Movement Alarm**.
- 4) Press **Menu/Select** button to confirm.

TO TEST THE SENSOR PAD:



- 1) Move your hand lightly on the mattress.
 The **Pendulum** icon will appear on Parent Unit indicator bar.
- 2) Remove your hand from the mattress. After 15 seconds you will hear a 'TIC' pre-alarm sound, and 5 seconds later the **Movement Alarm** will trigger.

MOVEMENT ALARM

- Alarm activates when no movement is detected by the Sensor Pad for 20 seconds.
- Both the Parent Unit and the Nursery Unit speakers will emit loud warning sound.
- **Movement Alarm** icon will show on the LCD screen.

IF THE ALARM DOES NOT SOUND

- Avoid contact with the crib while Sensor Pad is in operation.
- Place the crib near a supporting wall.
- Adjust the Sensor Pad sensitivity level.
- Turn **OFF** crib mobile, fans, loud music or anything else that may cause vibration.