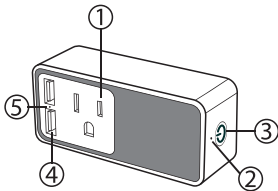


WiFi Socket

Instruction Manual
Model: M3 Outlet



1. Output AC Outlet
2. Power LED Indicator
3. Power Button
4. USB Output
5. USB LED Indicator

What's included:

- 1 x Wifi Socket
- 1 x Instruction Manual

Required Software:

Tuya Smart App (Google Play, Amazon App Store or iOS App Store)

** This device is only compatible with a 2.4 Ghz WiFi network*

*** Ensure mobile device is connected to the desired 2.4 Ghz network prior to app installation.*

Power Controls:

1. Press the power button power ON/OFF the 2xUSB ports and the AC Outlet.
 - Outlet and USB LED will light BLUE when powered ON.

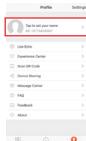
Connecting WiFi Socket:

A: Setting Up Your WiFi Socket with the Tuya Smart App:

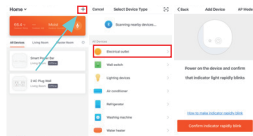
1. Download the "Tuya Smart" app from App Store or Google Play or scan the code below to download the app.



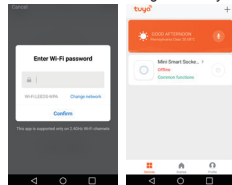
2. Open the Tuya Smart app and set up an account unique and personal to you and follow prompts within the app.



3. To add a device, select the "+" symbol at the top right of the app home page
4. Select "Electrical Outlet" from list of possible devices in the Tuya Smart App menu.
5. Press and hold the ON/OFF Power button on the Smart Plug for 5 seconds.



6. The Blue LED Indicator light should flash rapidly.
7. Enter your home WiFi password (Ensure the network shown below the password field is correct and press "Confirm").
 - To avoid potential security issues, password should contain upper and lower case letters accompanied by a number or symbol. Password should be changed monthly.



8. The app will now connect the Mini Smart Socket – ensure your WiFi router, mobile device and Mini Smart Socket are in close range. Operational range is within 10 meters unobstructed.
 - (This will take up to 2 minutes).
9. Once connected, the name of the device can be edited in the app.
10. Device can now be controlled using the Tuya Smart app.

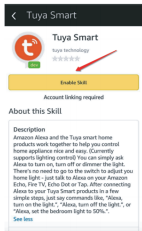
B: Controlling the Outlet with the App:

1. In the App's main screen:
 - Select the connected WiFi Socket
 - On the next screen, select the desired outlet to control power (ON/OFF)
 - NOTE: Outlets can be controlled separately or simultaneously.
2. Control Keys - *see image below*
 - Main Switch: master switch - adjusts power to both outlets simultaneously.
 - Countdown: Select to set a timer to power one or both outlets ON/OFF and follow the prompt screens.
 - Timer: Create a schedule for one or both outlets and follow the prompt screens.
 - NOTE: When a timer is set to power ON a connected outlet, further action is required to turn OFF the outlet.

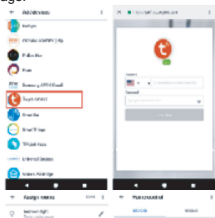


C: Connecting to Alexa:

1. In your Alexa App—Search for "Tuya Smart".
2. Enable the Tuya Smart Skill.
3. Input the user name and password you previously used to register in the App.
4. Confirmation page will be shown when your Alexa account is linked with your Tuya account.
5. After the above operation has been completed.—Click on "Smart Home" in your Alexa App and subsequently click on "discover devices".



4. Find the "Tuya Smart" in the Home Control list.
5. Select the region of your Tuya account
6. Enter your Tuya account and password, then tap "Link Now".
7. Once you assign rooms for the devices, your devices will be in the Home Control page.

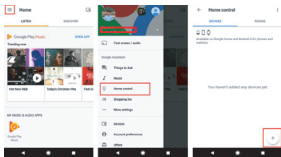


Control Smart Socket with Alexa:

1. You can control the outlet unit with a simple voice command like: "Alexa, turn on office light" or "Alexa, turn off office light".
2. The name of the device should be the same as the set up name chosen during installation of the Tuya App.

Connecting with Google Home:

1. Sign in to your Google Home account.
2. Tap the Selection button in the top left of the screen.
3. Select "Home Control", then tap the "+" in the bottom right of the screen.



Control Smart Socket through Google Home:

1. You can control the outlet unit with a simple voice command like:
"OK Google, turn on office light"
"OK Google, turn off office light".
2. The name of the device should be the same as the set up name chosen during installation of the Tuya App.

SAFETY PRECAUTIONS:

1. Read all the instructions before using the product.
2. Do not use on an aircraft or in a hospital.
3. To reduce the risk of injury, close supervision is necessary when the product is used near children.
4. Do not expose the device to any moisture.
5. Do not use the device in excess of its output rating. Overloaded outputs above rating may result in a risk of fire or injury.
6. Do not use the device if damaged or modified. Damaged or modified smart plug may exhibit unpredictable behavior resulting in fire, explosion or risk of injury.
7. Do not disassemble the device. Take it to a qualified service person when service or repair is required. Incorrect reassembly may result in a risk of fire or injury.
8. Do not expose the device to fire or excessive temperature. Exposure to extreme heat may cause explosion.
9. Have servicing performed by a qualified repair person using only identical replacement parts. This will ensure that the safety of the product is maintained.

Changes or modifications not expressly approved by the party responsible for compliance could void the user's authority to operate the equipment.

FCC Statement:

This equipment has been tested and found to comply with the limits for a Class B digital device, pursuant to Part 15 of the FCC Rules. These limits are designed to provide reasonable protection against harmful interference in a residential installation. This

equipment generates uses and can radiate radio frequency energy and, if Changes or modifications not expressly approved by the party responsible for compliance could void the user's authority to operate the equipment. This equipment has been tested and found to comply with the limits for a Class B digital device, pursuant to Part 15 of the FCC Rules. These limits are designed to provide reasonable protection against harmful interference in a residential installation.

This equipment generates uses and can radiate radio frequency energy and, if not installed and used in accordance with the instructions, may cause harmful interference to radio communications. However, there is no guarantee that interference will not occur in a particular installation. If this equipment does cause harmful interference to radio or television reception, which can be determined by turning the equipment off and on, the user is encouraged to try to correct the interference by one or more of the following measures: Reorient or relocate the receiving antenna. Increase the separation between the equipment and receiver. Connect the equipment into an outlet on a circuit different from that to which the receiver is connected. Consult the dealer or an experienced radio/TV technician for help.

This device complies with part 15 of the FCC Rules. Operation is subject to the following two conditions (1) this device may not cause harmful interference, and (2) this device must accept any interference received, including interference that may cause undesired operation.

This equipment complies with FCC radiation exposure limits set forth for an uncontrolled environment. This equipment should be installed and operated with minimum distance 20cm between the radiator and your body.

This transmitter must not be co-located or operating in conjunction with any other antenna or transmitter.