

User Manual

Soundcore Infini Soundbar A3371

FCC Caution

Any Changes or modifications not expressly approved by the party responsible for compliance could void the user's authority to operate the equipment.

Note: This equipment has been tested and found to comply with the limits for a Class B digital device, pursuant to part 15 of the FCC Rules. These limits are designed to provide reasonable protection against harmful interference in a residential installation. This equipment generates uses and can radiate radio frequency energy and, if not installed and used in accordance with the instructions, may cause harmful interference to radio communications. However, there is no guarantee that interference will not occur in a particular installation. If this equipment does cause harmful interference to radio or television reception, which can be determined by turning the equipment off and on, the user is encouraged to try to correct the interference by one or more of the following measures:

- Reorient or relocate the receiving antenna.
- Increase the separation between the equipment and receiver.

-

Connect the equipment into an outlet on a circuit different from that to which the receiver is connected.

- Consult the dealer or an experienced radio/TV technician for help.

This equipment complies with FCC radiation exposure limits set forth for an uncontrolled environment. This equipment should be installed and operated with minimum distance 20cm between the radiator & your body.

This device complies with part 15 of the FCC Rules. Operation is subject to the following two conditions: (1) This device may not cause harmful interference, and (2) this device must accept any interference received, including interference that may cause undesired operation.

IC Caution

"This equipment complies with IC RF radiation exposure limits set forth for an uncontrolled environment.

This equipment should be installed and operated with a minimum distance of 20 centimeters between the radiator and your body."

" ce matériel est conforme aux limites d'exposition aux rayonnements rf de ic énoncés dans un autre environnement.

ce matériel doit être installé et exploité à une distance minimale de 20 cm entre le radiateur et votre corps. "

- English:

This device complies with Industry Canada licence-exempt RSS standard(s).

Operation is subject to the following two conditions: (1) This device may not cause interference, and (2) This device must accept any interference, including interference that may cause undesired operation of the device.

- French:

Le présent appareil est conforme aux CNR d'Industrie Canada applicables aux appareils radio exempts de licence. L'exploitation est autorisée aux deux conditions suivantes:

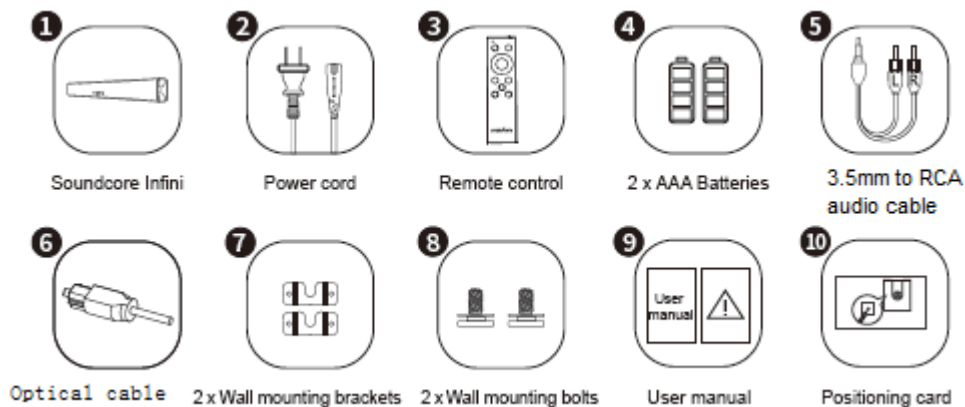
(1) l'appareil ne doit pas produire de brouillage, et

(2) l'utilisateur de l'appareil doit accepter tout brouillage radioélectrique subi, même si le brouillage est susceptible d'en compromettre le fonctionnement.

Safety Instructions

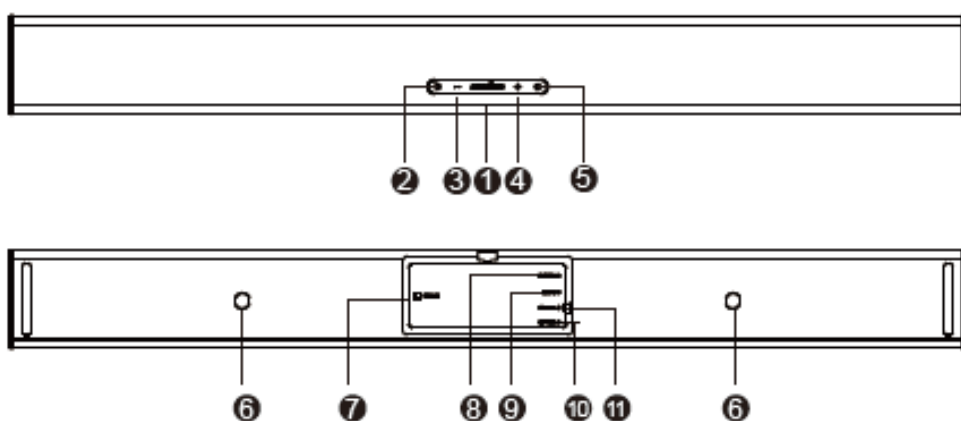
- ① Avoid dropping.
 - ② Do not disassemble.
 - ③ Do not submerge in water.
 - ④ Avoid extreme temperatures.
 - ⑤ Do not use the device outdoors during thunderstorms.
 - ⑥ Use original or certified cables.
 - ⑦ Do not use any corrosive cleaner / oil to clean.
8. The product should not be exposed to dripping or splashing water.
-

What's Included



- ① Soundbar
 - ② Power cord
 - ③ Remote control
 - ④ AAA Batteries
 - ⑤ 3.5mm to RCA audio cable
 - ⑥ Optical cable
 - ⑦ Wall mounting brackets
 - 8. Wall mounting bolts
 - 9. User manual
 - 10. Wall mounting template
-

At a Glance



- ① Status indicator

Status	Status indicator light
---------------	-------------------------------

Standby	Solid red
Optical	Solid green (stays on for 10 seconds)
Coaxial	Solid orange (stays on for 10 seconds)
Aux in	Solid cyan (stays on for 10 seconds)
Bluetooth pairing mode	Flashing blue
Bluetooth device connected	Solid blue (stays on for 10 seconds)
Volume up and down	Flashing white
Maximum volume	Solid white (stays on for 10 seconds)
Minimum volume	Solid white (stays on for 10 seconds)
Music equalizer mode	Flashing white (once)
Movie equalizer mode	Flashing white (2 times)
Dialogue mode	Solid white (stays on for 5 seconds)
Mute	Solid yellow

② Power button

③ Volume-down control

④ Volume-up control

⑤ Source input button

⑥ Wall mounting screw holes

⑦ Power input

⑧ Service port

9. Aux input

10. Optical input

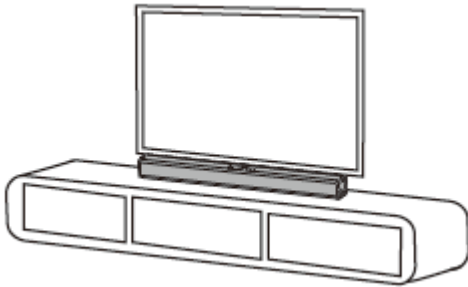
11. Coaxial

Note: Press source input button and hold for 3 seconds to activate Bluetooth pairing mode.

Placement

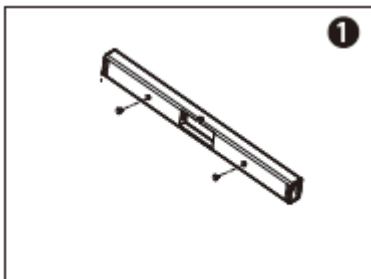
- **Table Placement**

1. Place the soundbar on a solid surface.

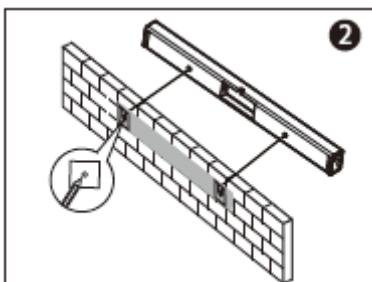


- **Wall mount Installation**

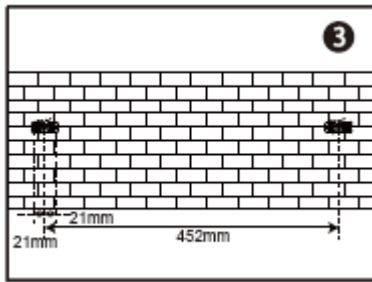
Step 1: Insert two wall mounting screws into the wall mounting screw holes, then fasten the screws.



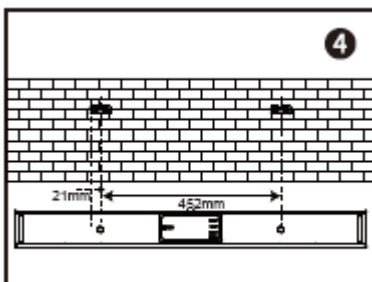
Step 2: Place the wall mounting template against the wall, under your TV. Mark the 4 bracket holes on the wall with a pencil.



Step 3: Fix the two mounting brackets on the wall according to the center points. Use bolts (not included) to secure the brackets.

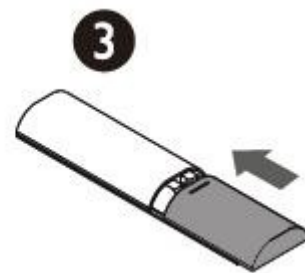
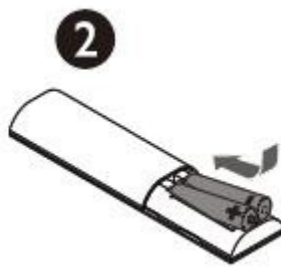
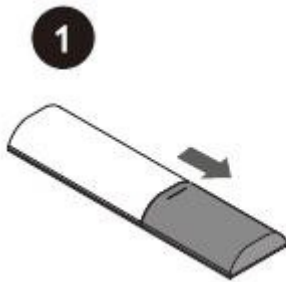


Step 4: Hang the soundbar on the brackets.

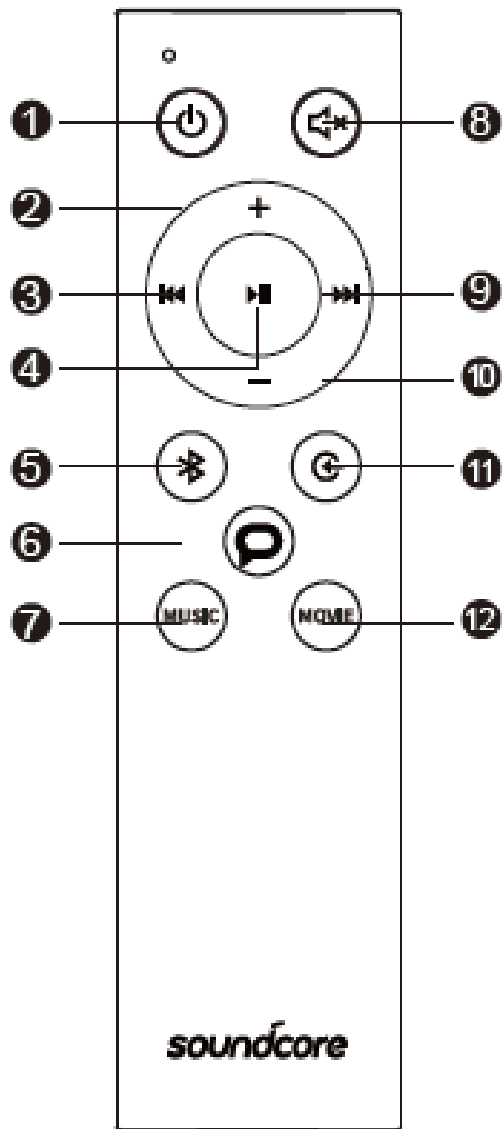


Remote Control

1. Battery installation



2. Remote control buttons



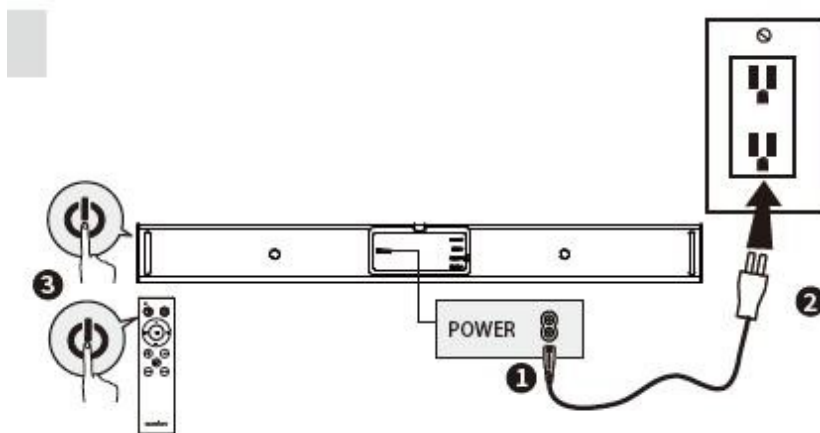
Button	Button functions
① Power button	Press to switch on / off the soundbar.
② Volume-up control	To increase the volume.
③ Previous	Return to previous track.
④ Play / Pause	To pause / resume playback.

⑤ Bluetooth button	To activate Bluetooth mode. 1. Press to activate Bluetooth mode. 2. Press and hold for 3 seconds to reconnect.
⑥ Dialogue mode button	To activate the dialogue mode.
⑦ Music equalizer button	To activate the music equalizer mode.
⑧ Mute button	To temporarily turn off the sound. Press the button again to turn the sound back on.
9. Next	Move to next track.
10. Volume-down control	To decrease the volume.
11. Source input button	To change source input. Press this button for 3 seconds to activate Bluetooth pairing mode.
12. Movie equalizer button	To activate the movie equalizer mode.

Note: The status indicator light will stay on for approximately 10 seconds when the soundbar is in Bluetooth mode / Aux in mode / Optical mode / Coaxial mode.

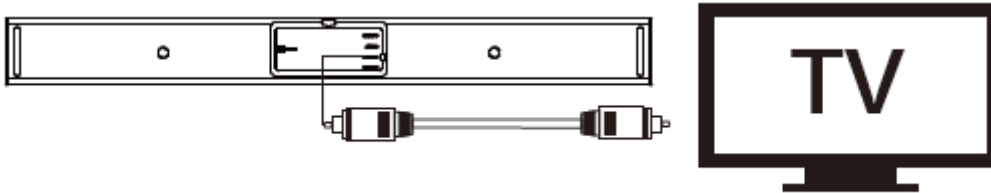
Using Your Soundbar

1. Turn On / Off



Note: The soundbar will automatically switch to standby mode when no audio input is received for over 30 minutes. The soundbar will wake up from standby mode when any button is pressed or source input is received.

a. Connect to your TV



1. You can use optical cable, coaxial cable or 3.5mm to RCA audio cable to connect to the respective output port of your TV.
2. Press the source input button on the soundbar or remote control to activate the corresponding mode. The status indicator will be solid green in optical mode, orange in coaxial mode and cyan in Aux mode.

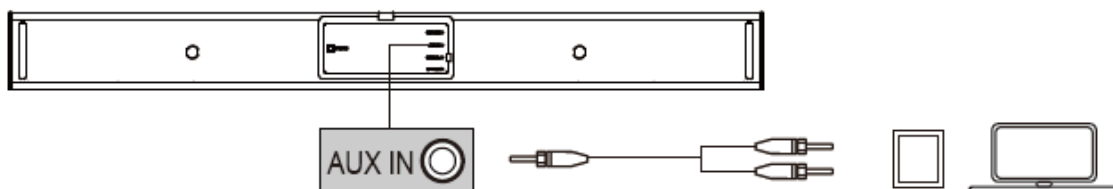
Note: The status indicator light will stay on for 10 seconds.

Note: Not all TVs have the audio outputs shown as above, please check your TV's specifications before setup.

Note: Try set the TV output to PCM if there is no audio sound when using either of the optical or coaxial inputs.

Note: Coaxial cable is not included.

b. Connect to other devices



1. You can use optical cable / coaxial cable or 3.5mm to RCA audio cable, or 3.5mm to 3.5mm cable (not included) to connect to the respective output port of other devices (such as Blu-ray player, game console, tablet, MP3 Player / laptop etc).

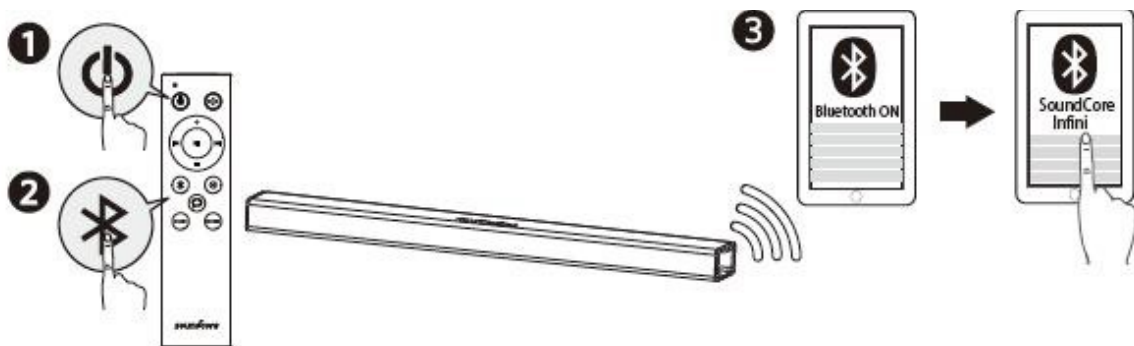
2. Press the source input button on the soundbar or remote control to activate optical, coaxial or Aux mode. The status indicator will be solid green in optical mode, orange in coaxial mode and cyan in Aux mode.

Note: The status indicator light will stay on for 10 seconds.



Note: Follow your device's user manual if you want to connect the soundbar to your other devices (such as Blu-ray player, game console, tablet, MP3 Player / laptop...etc)..

Note: 3.5mm to 3.5mm cable is not included.

c. Bluetooth mode



1. Press power button on the remote control to switch on the soundbar.
2. Press the Bluetooth button on the remote control to activate Bluetooth pairing mode.
3. Turn on the Bluetooth of your device, search for Soundcore Infini on your Bluetooth list then select connect.
- 4.

 <p>Flashing blue</p>	<p>Bluetooth mode is activated</p>
 <p>Solid blue</p>	<p>Connected to device</p> <p>Note: The status indicator light will stay on for 10 seconds.</p>



When turned on, Soundcore Infini will automatically connect to the last connected device if available. If not, press and hold the Bluetooth button (or source input button) for 3 seconds on the remote control or press the source input button on the soundbar for 3 seconds to activate Bluetooth mode.

Having connection problems? Remove Soundcore Infini from your device's Bluetooth history and ensure it's less than 10 meters away. Then try pairing again. To get the best sound quality, make sure there is a clear line of sight between the connected device and your soundbar.



When not in use, store your soundbar in a cool place.

Declaration of Conformity

Hereby, Anker Innovations Limited declares that the radio equipment type A3371 is in compliance with Directive 2014/53/EU. The full text of the EU declaration of conformity is available at the following internet address:

<https://www.anker.com/products>

Maximum output power: 0dBm

Frequency band: 2.4G band (2.4000GHz-2.4835GHz)

Anker Innovations Limited / Room 1318-19, Hollywood Plaza, 610 Nathan Road, Mongkok, Kowloon, Hong Kong

Specifications

***Specifications are subject to change without notice.**

Input	100-240V~ 50/60Hz 0.5A
Audio output	100 W
Size	880 x 56 x 90 mm / 34.6 x 2.2 x 3.5 in
Weight (without packaging)	2.9 kg / 104 oz
Bluetooth version	V4.2
Range	10 m / 33 ft

Product Number A3371
Soundcore Infini Soundbar
