



ROAV

©Anker Innovations Limited. All rights reserved. ROAV and the ROAV logo are trademarks of Anker Innovations Limited, registered in the United States and other countries. All other trademarks are the property of their respective owners.

Model: R2251
51005000920 V01

ROAV

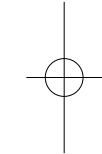
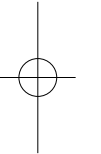
Owner's Manual

Roav DASHCAM A0



Table of Content

Safety Instructions	01
At a Glance	02
Inserting Memory Card	03
Installing Your DashCam	04
Connecting to Power	06
Downloading Roav App	07
Using Your DashCam	08
System Setup	10
Specifications	12
FAQ	13
Notice	14



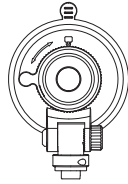


1



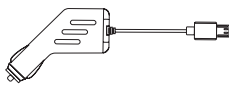
DashCam

2



Suction mount

3



Car charger

4



Manual

5



microSD card



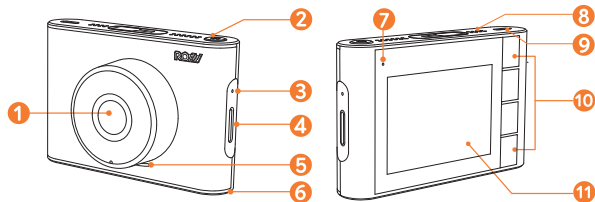
Accessories are subject to change without notice.

Safety Instructions

Please read and understand all instructions before using this product. If damage is caused by failure to follow the instructions, the warranty does not apply.

- Keep these instructions.
- Do not drop, puncture or disassemble this product.
- This product should not be exposed to dripping or splashing liquids.
- Avoid long exposure to direct sunlight, which may cause damage to this product.
- Exposing this product to open flames may cause explosion.
- Use original accessories only.
- Do not install where it will block the driver's view of the road or the deployment of the airbag.
- Keep your attention on the road. Do not operate the controls of this product while driving.
- Ensure the camera lens is kept clean and there is nothing blocking the lens.
- Setup time and date accurately before using this product.
- Do not use the charger if the cord is damaged or broken.
- Do not directly touch the product when it is getting overheated after long exposure to sunlight or continuous work.
- Remove this product from your vehicle when not in use for a long period.
- Keep out of reach of children.
- Use a clean, soft cloth to clean. Do not use any corrosive cleaner or oil to clean.
- The Company is NOT responsible for the loss of any data/content during operation.

At a Glance



- 1 Camera lens
- 2 Power button
- 3 Reset slot
- 4 Memory card slot
- 5 Speaker
- 6 Microphone
- 7 LED indicator
 - Flashing blue: recording in progress
 - Steady red: no recording status
- 8 Air vent
- 9 Micro USB charging port
- 10 Buttons
- 11 LCD screen

02

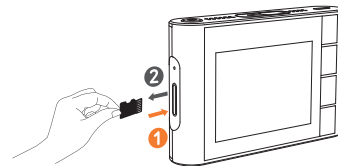
Inserting Memory Card



Do not remove or insert microSD / TF card when this product is powered on, which may damage the card.

For better product experience, use microSD / TF card that is higher than Class 10 32G. Do not use card lower than Class 10 as it may damage the product. Card should be formatted in Dashcam before using. It is recommended to format the card regularly.

Card Capacity	1080P 30FPS	720P 30FPS
32 GB	320 min	480 min
64 GB	640 min	960 min
128 GB	1280 min	1920 min



- 1 Insert a microSD / TF card with the gold contacts facing the screen side of the DashCam. Push the card until it clicks into place.
- 2 To remove the card, gently push its top edge inward until it clicks, and then pull it out of the slot.

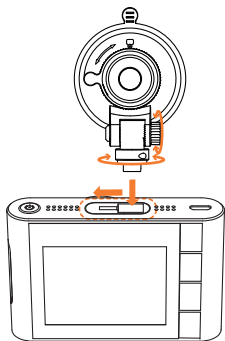
03

Installing Your DashCam



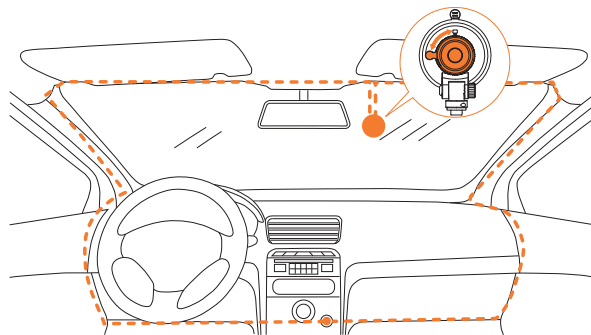
- Never install this product while driving.
- Install this product near the rear-view mirror to obtain the best open-field view. Do not install in a location that will obstruct your required driving view.
- Make sure that the lens is within the wiping range of the windscreen wiper to ensure a clear view even when it rains.
- Do not touch the lens with your fingers. Finger grease may be left on the lens and will result in unclear videos.

- 1 Attach the DashCam onto the mount.



04

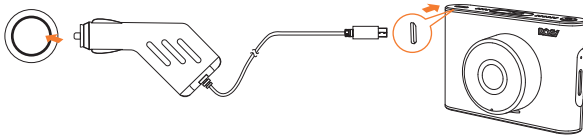
- 2 Select a location on the windshield near the bottom right corner of the rear-view mirror, clean with clear water and wait until fully dry.
- 3 Attach the suction mount onto the windshield and press down the suction clip.
- 4 Adjust the Dashcam viewing angle to ensure that it is aligned with the road ahead, then rotate the fixing knob to fasten.
- 5 Hide the charging cable into the seams and weatherstrips around the edge of the dashboard.



05

Connecting to Power

- 1 Connect the car charger to the DashCam.
- 2 Plug the other end of the car charger to your vehicle's cigarette lighter socket.



- 3 Once the car engine is started, DashCam will automatically power on and start recording. Once the car engine is shut down, DashCam will automatically save the recording and turn off.

Downloading Roav App

Search "Roav" in App Store or Google Play to Download.



Connect DashCam with Smartphone

With successful connection with your smartphone via built-in Wi-Fi, you can save and playback the driving recording videos on your smartphone. You can also change settings of your DashCam via the Roav app.



When successfully connected, DashCam stops recording.


- 1 Press **OK (Menu)**, select **"WIFI"** > **"On"** to enable WiFi on DashCam.
- 2 Enable WiFi on your smartphone, find **"Roav DashCam A0"** on the list and connect it, enter password (initial password: goroavcam) if required.
- 3 Follow the on-screen instructions in the Roav app to complete the connection.

Using Your DashCam



As a driver, you have full responsibility to drive safely and adhere to all applicable traffic regulations.

Record Videos

- 1 When connected to a car charger, DashCam automatically starts recording, **REC** is displayed and red dot flashes on the screen, the current recording duration is displayed, and the current date and time is displayed.
- 2 To enable / disable the audio recording, press  (Mute/Unmute).

Protect the Current Recording

By default, DashCam uses a sensor to automatically detect accidental collisions and protect the video file with duration of 30 seconds. This indicates that those recordings have been locked and will not be overwritten by new video clips.








To protect the current recording manually, press  (Emer).

Playback Videos



The DashCam stops recording while viewing videos or settings.

- 1 Select "**Normal**" folder to check saved videos. Select "**Event**" folder to check the videos of accidental collisions.
- 2 Select a video to playback.

Button	Virtual Button	Function
OK		Play / Pause
		Fast forward
		Delete Current / Delete All
		Back to previous menu

System Setup



The OSD functions are subject to change without notice

To adjust DashCam's settings, tap **OK**.

Menu Options	Description	Available Options
Resolution	Set a desired video resolution.	720P 30FPS / 1080P 30FPS
Loop recording	Set the duration of each recording video clip.	1 Min / 3 Min / 5 Min
Sensitivity	Sensitivity for gravity helps to detect vibration and shock while driving and makes DashCam to respond appropriately.	Low / Medium / High / Off
Parking mode	Enable to keep DashCam in standby mode. Motion will be detected for 15 times and DashCam starts recording a 30 second video each time.	Low / Medium / High / Off
WIFI	Connect with smartphone.	On / Off
Time Setup	Set date and time	Tap / to adjust the value, press to next option, press OK to save

10

Date Format	Set the sequence for date.	None / YYYY MM DD / MM DD YYYY / DD MM YYYY
LCD Auto Off	Turn off the screen backlight after a period of inactivity.	30 Seconds / 60 Seconds / Off
Machine Sound	Mute or unmute.	On / Off
Default	Reset all options to the default settings.	Cancel / OK
Format	Format the memory card and all the data will be deleted.	Cancel / OK
Water Mark	Display / hide the date and time on the recordings.	Date+Logo / Date / Logo / Off
Frequency	Match the video frequency of DashCam with the electrical frequency of your location.	50 Hz (EU / China) / 60 Hz (US)
About	Check the current version number.	

Button	Function
	Click repeatedly to select a setting; Click to confirm a selection.
	Toggle the next setting
	Toggle the previous setting
	Back to recording mode

11

Specifications



Specifications are subject to change without notice.

Screen: 2.4" LCD color TFT

Camera lens: wide-angle lens 155°

Power input: 5V \Rightarrow 1.5A

Max video resolution: 1080P 30FPS (1920x1080)

Video clip format: .MP4

Wi-Fi: 2.4GHz Band

Operating temperature range: -20°C to 70°C / -4°F to 158°F

Operating temperature range: 0°C-70°C/32°C-158°C (Parking mode)

Weight: Approx. 87 g / 3 oz

Size: 83.4 * 56 * 35.4 mm / 3.3 * 2.2 * 1.4 in

FAQ

- 1 How come the memory capacity in my memory card is not 100% available?
 - Some memory capacity is used for emergency recording.
- 2 Can not record?
 - Check if the memory card is inserted properly and there is enough free capacity.
 - Check the battery level.
- 3 Blurred image?
 - Use a clean, soft lens-cleaning cloth to gently clean the lens.
- 4 Malfunction or crash?
 - Long press the **Reset** slot by using a sharp pin for at least 2 seconds.
- 5 Blank screen?
 - The screen saver is activated. Change settings to "**Off**" if required.
- 6 Fail to view and playback videos on your smartphone?
 - Check on your smartphone if Wi-Fi is successfully connected to the DashCam.
- 7 How to enable parking mode?
 - Press **OK (Menu)**, select "**Parking mode**" > "**ON**".
- 8 Worry about the memory card is full?
 - Continuous loop recording allows to overwrite the old unlocked files.
- 9 Will my data be used when my smartphone is connected with DashCam?
 - No. Data will be used only if you share the saved videos via social apps.

Notice

FCC Statement

This device complies with Part 15 of the FCC Rules. Operation is subject to the following two conditions: (1) This device may not cause harmful interference, and (2) This device must accept any interference received, including interference that may cause undesired operation.

Warning: Changes or modifications not expressly approved by the party responsible for compliance could void the user's authority to operate the equipment.

Note: This equipment has been tested and found to comply with the limits for a Class B digital device, pursuant to Part 15 of the FCC Rules. These limits are designed to provide reasonable protection against harmful interference in a residential installation.

This equipment generates, uses and can radiate radio frequency energy and, if not installed and used in accordance with the instructions, may cause harmful interference to radio communications. However, there is no guarantee that interference will not occur in a particular installation. If this equipment does cause harmful interference to radio or television reception, which can be determined by turning the equipment off and on, the user is encouraged to try to correct the interference by one or more of the following measures: (1) Reorient or relocate the receiving antenna. (2) Increase the separation between the equipment and receiver. (3) Connect the equipment into an outlet on a circuit different from

that to which the receiver is connected. (4) Consult the dealer or an experienced radio / TV technician for help.

This device is acting as slave and operating in the 2.4 GHz (2412-2462 MHz).

FCC Radiation Exposure Statement:

This equipment complies with FCC radiation exposure limits set forth for an uncontrolled environment. This equipment should be installed and operated with minimum distance 20cm between the radiator & your body.

The device has been evaluated to meet general RF exposure requirements. The device can be used in portable exposure conditions without restriction.

Apple and the Apple logo are trademarks of Apple Inc., registered in the U.S. and other countries. App Store is a service mark of Apple Inc., registered in the U.S. and other countries.

Google Play and the Google Play logo are trademarks of Google Inc. "Android" is a registered trademark of Google Inc. in the United States and other countries.

"iOS" is a registered trademark of Apple Inc. other countries.

IC NOTICE TO CANADIAN USERS

This device complies with Industry Canada license-exempt RSS standard(s). Operation is subject to the following two conditions: (1) This device may not cause interference, and (2) This device must accept any interference, including interference that may cause undesired operation of the device. This device complies with RSS-247 of Industry Canada. Operation is subject to the condition that this device does not cause harmful interference. This Class B digital apparatus complies with Canadian ICES-003 (Cet **15**

appareil numérique de la Classe B conforme à la norme NMB-003 du Canada).

Le présent appareil est conforme aux CNR d'Industrie Canada applicables aux appareils radio exempts de licence. L'exploitation est autorisée aux deux conditions suivantes : (1) l'appareil ne doit pas produire de brouillage, et (2) l'utilisateur de l'appareil doit accepter tout brouillage radioélectrique subi, même si le brouillage est susceptible d'en compromettre le fonctionnement.



12-month limited warranty



Lifetime technical support



support@goroav.com



+1 (800) 988 7973 (US) Mon-Fri 9:00 - 17:00 (PT)



[@GoRoav](https://www.facebook.com/GoRoav)



[@GoRoav](https://twitter.com/GoRoav)

