



## Quick Start Guide

eufyCam E Wire-Free HD Security Camera Set

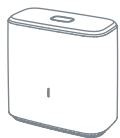
Anker Innovations Limited. All rights reserved. **eufy Security** and **eufy Security Logo** are trademarks of Anker Innovations Limited, registered in the United States and other countries. All other trademarks are the property of their respective owners.

51005001227 V02

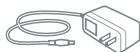
## Table of Content

Connect the HomeBase E to the Internet	02
Get the App and Setup the System	03
Find a Good Mounting Spot	04
Mounting the Camera Outdoors	06
Mounting the Camera Indoors	07
Charging eufyCam E	08
Safety	09
Customer Service	11

## For HomeBase E Installation:



HomeBase E  
(T8002)



HomeBase E  
Power Adapter



Ethernet Cable



microSD Card  
(Inserted into  
HomeBase E)

IC: 23451-T8002

FCC ID : 2AOKB-T8002

## For eufyCam E Installation:



eufyCam E  
(T8112)



Micro-USB  
Charging Cable



Outdoor Mount



Mounting Screws  
and Anchors

IC: 23451-T8112

FCC ID : 2AOKB-T8112



Indoor Mount



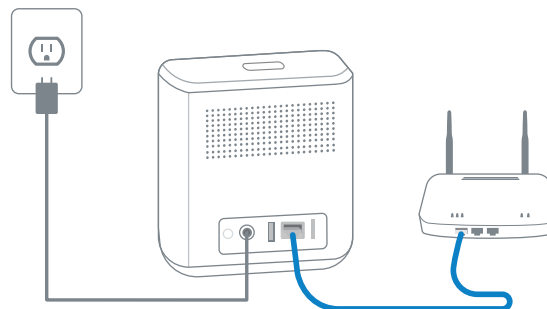
Hook  
(for Indoor Mount)



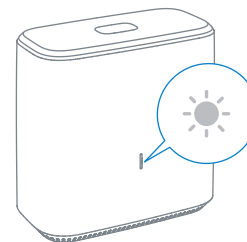
1. Camera quantity and accessories vary by bundle package.
2. HomeBase E power adapter varies by region.
3. Keep the camera at least 1 ft away from your internal / external hard drives.

## Connect the HomeBase E to the Internet

1. Power on the HomeBase E, then use the ethernet cable provided to connect the HomeBase E.



2. The LED indicator turns to white (**this may take up to 1min**) when HomeBase E is ready for setup.

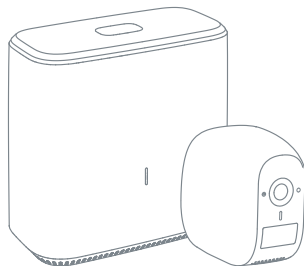


## Get the App and Setup the System

Download the eufy Security app from the App Store (iOS devices) or Google Play (Android devices).



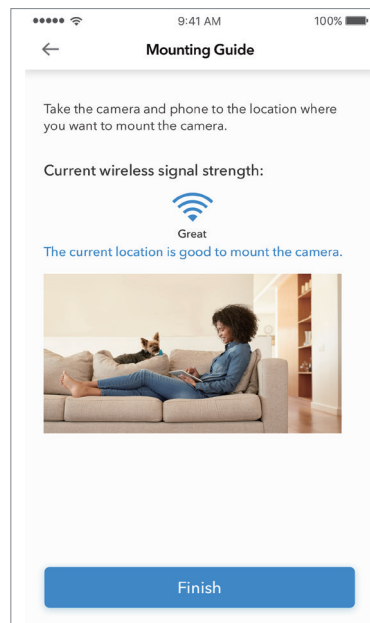
Sign up for a eufy Security account, then follow the onscreen instructions to complete the setup.



## Find a Good Mounting Spot

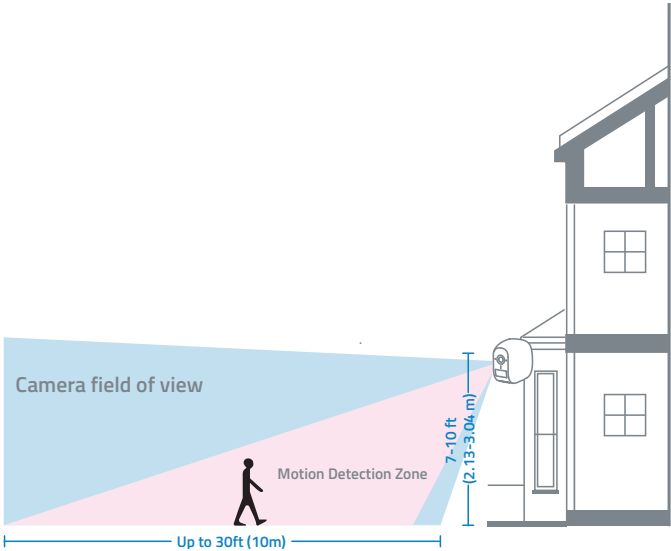
### Signal Strength

Use the “Mounting Guide” function, found at the end of the setup process or under **Camera Settings > Mounting Guide**, to test the wireless signal strength of eufyCam E at the location you wish to mount the camera. Move the camera as close to the HomeBase E as possible if the wireless signal strength is poor.



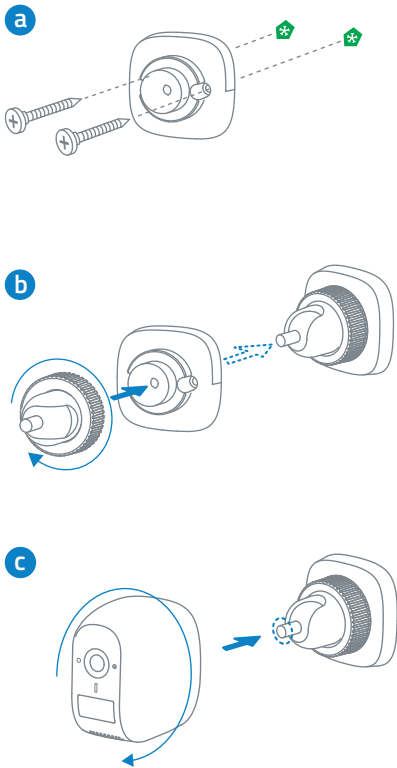
## Height and Location

Hang eufyCam E **7-10 ft (2-3 m)** above the ground. This height maximizes the detection range of the motion sensor of eufyCam E. Avoid placing eufyCam E under direct sunlight.



## Mounting the Camera Outdoors

Outdoor mount is designed specifically for outdoor environment.



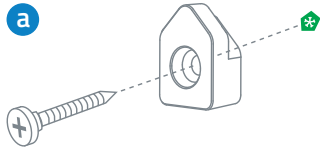
Drill holes with a **15/64 in (6 mm)** drill bit, then insert the anchors into the holes; anchors are necessary for walls that are made out of hard materials such as concrete, brick, or stucco.

Screw the base of the outdoor mount onto the wall. Fasten the ball bracket of the outdoor mount to the base of the outdoor mount.

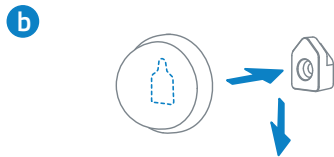
Fasten eufyCam E to the outdoor mount and adjust the viewing angle by checking the live stream feed in the eufy Security app.

## Mounting the Camera Indoors

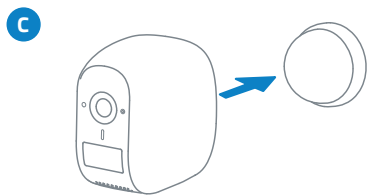
Stick the camera directly to any flat surface made out of iron. Or you can use the indoor mount to mount the camera:



Drill a hole. Use the included anchor if it's drywall and fasten the hook.



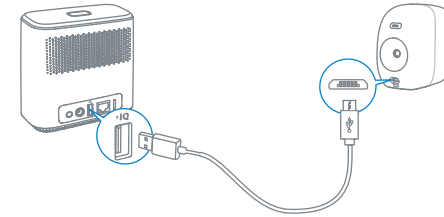
Hang the indoor mount on the hook.



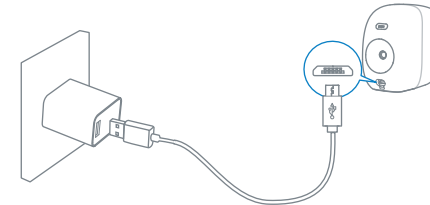
Attach eufyCam E to the indoor mount and adjust the viewing angle.

## Charging eufyCam E

### Fast charging (<4Hr)



### Normal charging



Use the provided micro-USB charging cable to connect eufyCam E to the camera charging port on the backside of the HomeBase E. Charging a camera takes approximately 4 hours; it will take longer if you charge the camera via a universal 5V USB charger.

The LED indicator turns solid red during charging, and goes off once eufyCam E is fully charged.

**For troubleshooting, check Help on the eufy Security app.  
Refer to app page for LED indicator status.**

# Safety

## FCC Statement

This device complies with Part 15 of the FCC Rules. Operation is subject to the following two conditions: (1) this device may not cause harmful interference, and (2) this device must accept any interference received, including interference that may cause undesired operation.

**Warning:** Changes or modifications not expressly approved by the party responsible for compliance could void the user's authority to operate the equipment.

**Note:** This equipment has been tested and found to comply with the limits for a Class B digital device, pursuant to Part 15 of the FCC Rules. These limits are designed to provide reasonable protection against harmful interference in a residential installation.

This equipment generates uses and can radiate radio frequency energy and, if not installed and used in accordance with the instructions, may cause harmful interference to radio communications. However, there is no guarantee that interference will not occur in a particular installation. If this equipment does cause harmful interference to radio or television reception, which can be determined by turning the equipment off and on, the user is encouraged to try to correct the interference by one or more of the following measures: (1) Reorient or relocate the receiving antenna. (2) Increase the separation between the equipment and receiver. (3) Connect the equipment into an outlet on a circuit different from that to which the receiver is connected. (4) Consult the dealer or an experienced radio/TV technician for help.

## FCC Radio Frequency Exposure Statement

The device has been evaluated to meet general RF exposure requirements. The device can be used in fixed/mobile exposure condition. The min separation distance is 20cm.

**Notice:** Shielded cables

All connections to other computing devices must be made using shielded cables to maintain compliance with FCC regulations.

The following importer is the responsible party

Company Name: POWER MOBILE LIFE, LLC

Address: 400 108th Ave NE Ste 400, Bellevue, WA 98004-5541

Telephone: 1-206-383-8247

 This product complies with the radio interference requirements of the European Community.

## Declaration of Conformity

Hereby, Anker Innovations Limited declares that this device is in compliance with the essential requirements and other relevant provisions of Directive 2014/53/EU. For the declaration of conformity, visit the Web site [www.eufylife.com](http://www.eufylife.com)

Due to the used enclosure material, the product shall only be connected to a USB Interface of version 2.0 or higher. The connection to so called power USB is prohibited.

A statement regarding the AC/DC adapter as disconnect device is missing in the user manual.

The statement shall require a socket outlet that is installed near equipment and that shall be easily

09

accessible.

The adapter shall be installed near the equipment and shall be easily accessible.

Do not use the Device in the environment at too high or too low temperature, never expose the Device under strong sunshine or too wet environment.

The suitable temperature for HomeBase E and accessories is -10°C-50°C.

The suitable temperature for eufyCam E and accessories is -20°C-50°C.

When charging, please place the device in an environment that has a normal room temperature and good ventilation.

It is recommended to charge the device in an environment with a temperature that ranges from 5°C-25°C.

Please ensure to use only the charger offered by the manufacturer. Using unauthorized charger may cause danger and violate the authorization of the projector and the guarantee article.

This charger is for indoor use only

The charger output voltage/current is 5Vdc/2A. The plug considered as disconnect device of adapter. RF exposure information: The Maximum Permissible Exposure (MPE) level has been calculated based on a distance of d=20 cm between the device and the human body. To maintain compliance with RF exposure requirement, use product that maintain a 20cm distance between the device and human body.

CAUTION RISK OF EXPLOSION IF BATTERY IS REPLACED BY AN INCORRECT TYPE. DISPOSE OF USED BATTERIES ACCORDING TO THE INSTRUCTIONS

Wi-Fi Operating Frequency Range: 2412-2472MHz for EU;

SUB-1G Frequency range: 866-866.8MHz



This product is designed and manufactured with high quality materials and components, which can be recycled and reused.



This symbol means the product must not be discarded as household waste, and should be

delivered to an appropriate collection facility for recycling. Proper disposal and recycling helps protect natural resources, human health and the environment. For more information on disposal and recycling of this product, contact your local municipality, disposal service, or the shop where you bought this product. This device complies with Industry Canada licence-exempt RSS standard(s). Operation is subject to the following two conditions:

- (1) this device may not cause interference, and
- (2) this device must accept any interference, including interference that may cause undesired operation of the device."

Le présent appareil est conforme aux CNR d'Industrie Canada applicables aux appareils radio exempts de licence. L'exploitation est autorisée aux deux conditions suivantes:

- (1) l'appareil ne doit pas produire de brouillage, et
- (2) l'utilisateur de l'appareil doit accepter tout brouillage radioélectrique subi, même si le brouillage est susceptible d'en compromettre le fonctionnement."

# Customer Service

- **Warranty**

12-month limited warranty

- **Call Us**

United States	+1 (800) 988 7973	Mon-Fri 9AM-5PM (PT)
United Kingdom	+44 (0) 1604 936 200	Mon-Fri 6AM-11AM (GMT)
Germany	+49 (0) 69 9579 7960	Mon-Fri 6:00-11:00

- **Email Us**

Customer Support: [support@eufylife.com](mailto:support@eufylife.com)

 @EufyOfficial

 @EufyOfficial

 eufyofficial

IC RF Statement:

When using the product, maintain a distance of 20cm from the body to ensure compliance with RF exposure requirements.

Lors de l'utilisation du produit, maintenez une distance de 20 cm du corps afin de vous conformer aux exigences en matière d'exposition RF.