



Anker Innovations Limited. All rights reserved. **eufy** and the **eufy logo** are trademarks of Anker Innovations Limited, registered in the United States and other countries. All other trademarks are the property of their respective owners.

51005001216 V01



## Quick Start Guide

### Entry Sensor

**For Entry Sensor Installation:**



Entry Sensor  
(T8900)



Sensor Magnet



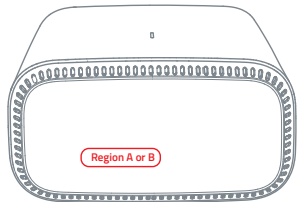
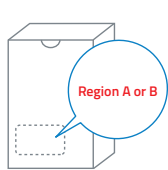
CR123A Battery



Mounting Screws



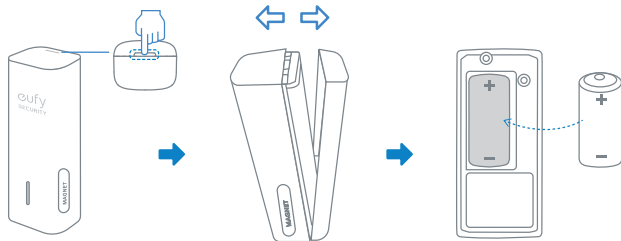
1. Entry Sensor is only compatible with the eufyCam Security System.
2. Make sure the region printed on your product package (A or B), matches the region printed on your HomeBase.



01

## Battery Placement

Remove the battery compartment lid on the Entry Sensor and insert the provided CR123 battery. Replace the lid.



02

## Adding Entry Sensor to Your System

On Eufy Security app follow the onscreen instructions to add your Eufy Security devices. Choose **Add Device**, then select **Entry Sensor** to add it to your system.

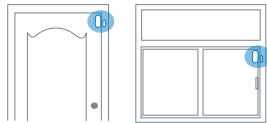


03

## Mounting the Sensor




Place the sensor on the edge of a door or window. Use the adhesive strips (On the back of the sensor) or mounting screws provided to mount the sensor.

- Make sure the gap between Entry Sensor and the sensor magnet is less than **1.6 in (4 cm)** when the door or window is closed.
- The bottom of the sensor magnet should align with the **bottom** of Entry Sensor.



04

## LED

Sensor LED indicator color	Entry Sensor status
 Flashing white	Adding to HomeBase
 Flashing white (Once)	Sensor detects an open/close activity
 Flashing red (Once)	Sensor battery is low or disconnects from HomeBase


## FAQ

- 1. What battery does the Entry Sensor use?**  
Entry Sensor uses a CR123 battery with 3V output.
- 2. How long does the battery last?**  
One CR123 battery usually lasts up to 2 years, but depends on the usage.

Please visit our official website to download the user manual: [www.eufylife.com](http://www.eufylife.com)

05

## Safety

 This product complies with the radio interference requirements of the European Community.

### Declaration of Conformity

Hereby, Anker Innovations Limited declares that this device is in compliance with the essential requirements and other relevant provisions of Directive 2014/53/EU. For the declaration of conformity, visit the Web site <https://www.eufylife.com/>.

Do not use the Device in the environment at too high or too low temperature, never expose the Device under strong sunshine or too wet environment.

The suitable temperature for the product and accessories is 0°C -40°C .

RF exposure information: The Maximum Permissible Exposure (MPE) level has been calculated based on a distance of d=20 cm between the device and the human body.

To maintain compliance with RF exposure requirement, use product that maintain a 20cm distance between the device and human body.

CAUTION RISK OF EXPLOSION IF BATTERY IS REPLACED BY AN INCORRECT TYPE.

DISPOSE OF USED BATTERIES ACCORDING TO THE INSTRUCTIONS

06

SUB-1G Frequency range:866~866.8MHz 868.2~869MHz

The following importer is the responsible party (contact for EU matters only)

Importer:Anker Technology (UK) Ltd

Importer Address:Suite B, Fairgate House, 205 Kings Road, Tyseley,  
Birmingham,United Kingdom B11 2AA



This product is designed and manufactured with high quality materials and components, which can be recycled and reused.



This symbol means the product must not be discarded as household waste, and should be delivered to an appropriate collection facility for recycling. Proper disposal and recycling helps protect natural resources, human health and the environment. For more information on disposal and recycling of this product, contact your local municipality, disposal service, or the shop where you bought this product.

#### **FCC Statement**

This device complies with Part 15 of the FCC Rules. Operation is subject to the following two conditions: (1) this device may not cause harmful interference, and (2)

**07**

this device must accept any interference received, including interference that may cause undesired operation.

Note: This equipment has been tested and found to comply with the limits for a Class B digital device, pursuant to Part 15 of the FCC Rules. These limits are designed to provide reasonable protection against harmful interference in a residential installation.

This equipment generates uses and can radiate radio frequency energy and, if not installed and used in accordance with the instructions, may cause harmful interference to radio communications. However, there is no guarantee that interference will not occur in a particular installation. If this equipment does cause harmful interference to radio or television reception, which can be determined by turning the equipment off and on, the user is encouraged to try to correct the interference by one or more of the following measures: (1) Reorient or relocate the receiving antenna. (2) Increase the separation between the equipment and receiver. (3) Connect the equipment into an outlet on a circuit different from that to which the receiver is connected. (4) Consult the dealer or an experienced radio/TV technician for help.

FCC Radio Frequency Exposure Statement

**08**

The device has been evaluated to meet general RF exposure requirements. The device can be used in fixed/mobile exposure condition. The min separation distance is 20cm.

The following importer is the responsible party

Company Name: POWER MOBILE LIFE, LLC

Address: 400 108th Ave NE Ste 400, Bellevue, WA 98004-5541

Telephone: 1-206-383-8247

This device complies with Industry Canada licence-exempt RSS standard(s).

Operation is subject to the following two conditions:

- (1) this device may not cause interference, and
- (2) this device must accept any interference, including interference that may cause undesired operation of the device."

Le présent appareil est conforme aux CNR d'Industrie Canada applicables aux appareils radio exempts de licence. L'exploitation est autorisée aux deux conditions suivantes:

- (1) l'appareil ne doit pas produire de brouillage, et
- (2) l'utilisateur de l'appareil doit accepter tout brouillage radioélectrique subi, même si le brouillage est susceptible d'en compromettre le fonctionnement."

09

## Customer Service

### ▪ Warranty

12-month limited warranty

### ▪ Call Us

United States + 1 (800) 988 7973 Mon-Fri 9AM-5PM (PT)

United Kingdom +44 (0) 1604 936 200 Mon-Fri 6AM-11AM (GMT)

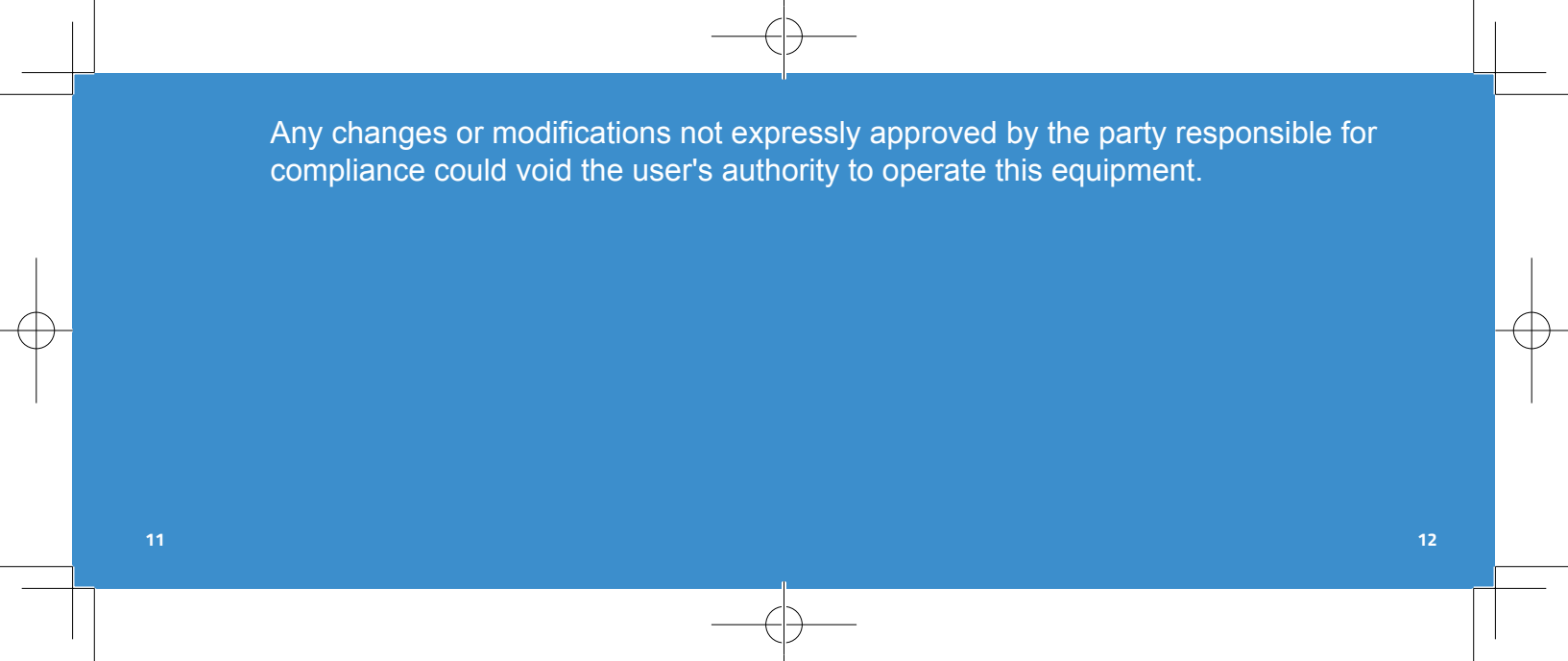
Germany +49 (0) 69 9579 7960 Mon-Fri 6:00-11:00

### ▪ Email Us

Customer Support: [support@eufylife.com](mailto:support@eufylife.com)



10

The image features a large blue rectangular area in the center. This area is surrounded by a white border that includes registration marks, which are small circles with crosshairs at the corners and midpoints of the sides. The text is centered within the blue area.

Any changes or modifications not expressly approved by the party responsible for compliance could void the user's authority to operate this equipment.